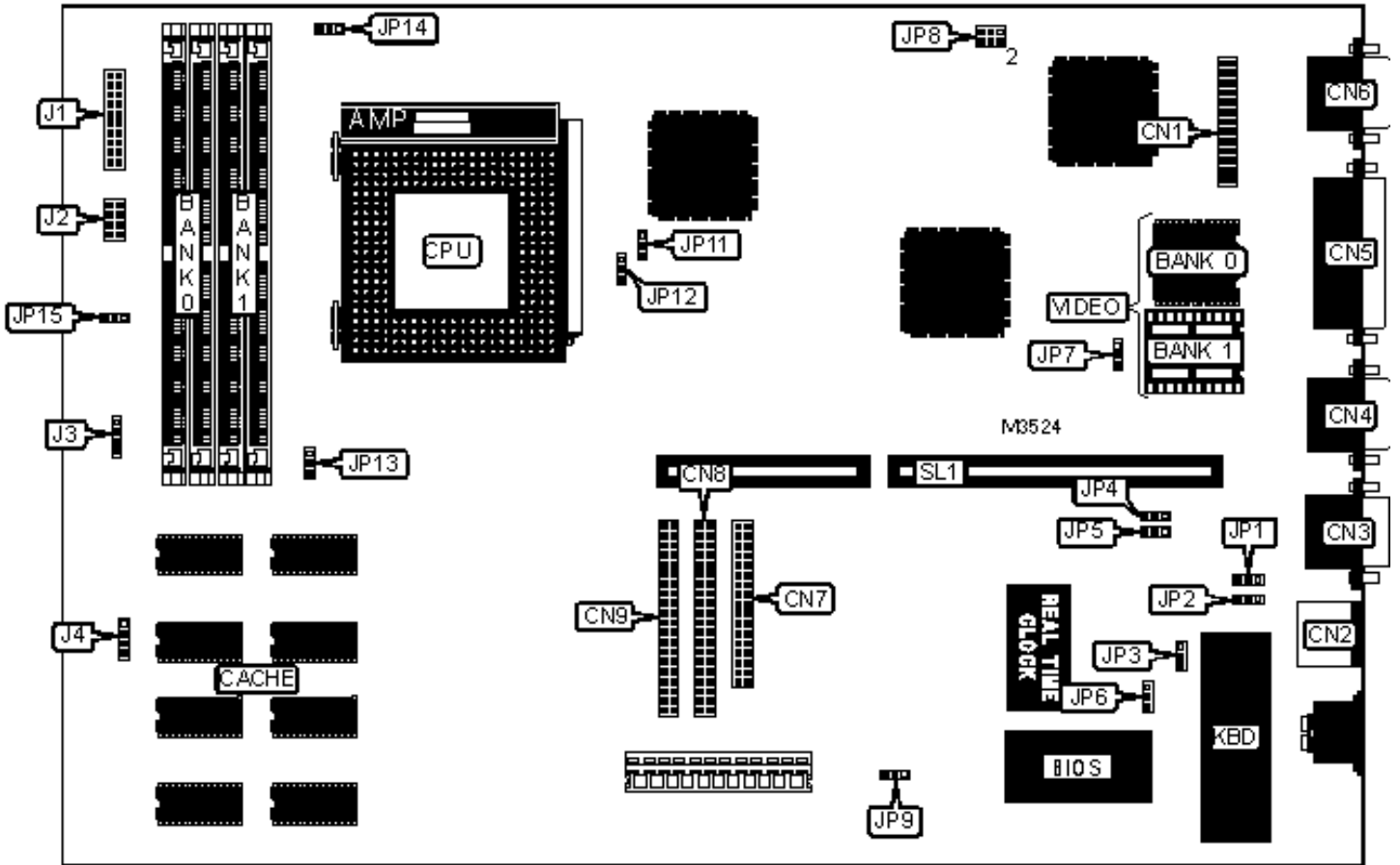


ACER, INC.

PI1

Configuration



CONNECTIONS

Purpose	Location	Purpose	Location
Feature connector	CN1	IDE interface 1	CN9
PS/2 mouse port	CN2	Front panel LEDs	J1
Serial port 1	CN3	Front panel LEDs	J2
Serial port 2	CN4	IDE interface LED	J3
Parallel port	CN5	IDE interface LED	J4
VGA port	CN6	Green PC connector/reset switch	JP15
Floppy drive interface	CN7	Riser slot	SL1
IDE interface 2	CN8		

USER CONFIGURABLE SETTINGS

Function	Label	Position
» BIOS type select OEM BIOS installed	JP1	Pins 2 & 3 closed
BIOS type select RESERVED BIOS	JP1	Pins 1 & 2 closed
» Password disabled	JP2	Pins 2 & 3 closed
Password enabled	JP2	Pins 1 & 2 closed
» BIOS type select flash BIOS	JP3	Pins 1 & 2 closed
BIOS type select EPROM	JP3	Pins 2 & 3 closed
» On board SMC665 enabled	JP6	Pins 2 & 3 closed
On board SMC665 disabled	JP6	Pins 1 & 2 closed
» On board GD5434 enabled	JP7	Pins 2 & 3 closed
On board GD5434 disabled	JP7	Pins 1 & 2 closed
» IDE interface enabled	JP9	Pins 2 & 3 closed
IDE interface disabled	JP9	Pins 1 & 2 closed
» ADS# not delayed	JP11	Pins 1 & 2 closed

	ADS# delayed by one CPU clock	JP11	Pins 2 & 3 closed
»	Reset switch used as reset switch	JP15	Pins 2 & 3 closed
	Reset switch used as green PC connector	JP15	Pins 1 & 2 closed

DRAM CONFIGURATION		
Size	Bank 0	Bank 1
8MB	(2) 1M x 36	None
16MB	None	(2) 2M x 36
16MB	(2) 1M x 36	(2) 1M x 36
24MB	(2) 2M x 36	(2) 1M x 36
32MB	(2) 4M x 36	None
32MB	(2) 2M x 36	(2) 2M x 36
40MB	(2) 4M x 36	(2) 1M x 36

DRAM CONFIGURATION (CON'T)		
Size	Bank 0	Bank 1
48MB	(2) 2M x 36	(2) 4M x 36
64MB	(2) 8M x 36	None
64MB	(2) 4M x 36	(2) 4M x 36
72MB	(2) 1M x 36	(2) 8M x 36
80MB	(2) 8M x 36	(2) 2M x 36
96MB	(2) 4M x 36	(2) 8M x 36
128MB	(2) 8M x 36	(2) 8M x 36
Note: Banks are interchangeable.		

CACHE CONFIGURATION

Note: 256KB cache is factory installed and is not configurable.

VIDEO MEMORY CONFIGURATION

Size	Bank 0	Bank 1
1MB	1MB	None
2MB	1MB	(2) 256K x 16

Note: Bank 0 is factory installed and is not configurable.

CPU SPEED SELECTION

CPU speed	Clock speed	JP8
75MHz	50MHz	Pins 1 & 4 closed
90MHz	60MHz	Pins 2 & 5 closed
100MHz	66MHz	Pins 3 & 6 closed

CPU TYPE SELECTION

Type	JP12
Cyrix	Pins 2 & 3 closed
Intel	Pins 1 & 2 closed

CPU VOLTAGE SELECTION

Voltage	JP13
3.3825v	Pins 1 & 2 closed
3.5250v	Pins 2 & 3 closed

CPU CORE CLOCK RATIO SELECTION

Ratio	JP14
-------	------

3/2	Pins 1 & 2 closed
2x	Pins 2 & 3 closed

DMA CHANNEL SELECTION		
Channel	JP4	JP5
» 1	Pins 1 & 2 closed	Pins 1 & 2 closed
3	Pins 2 & 3 closed	Pins 2 & 3 closed