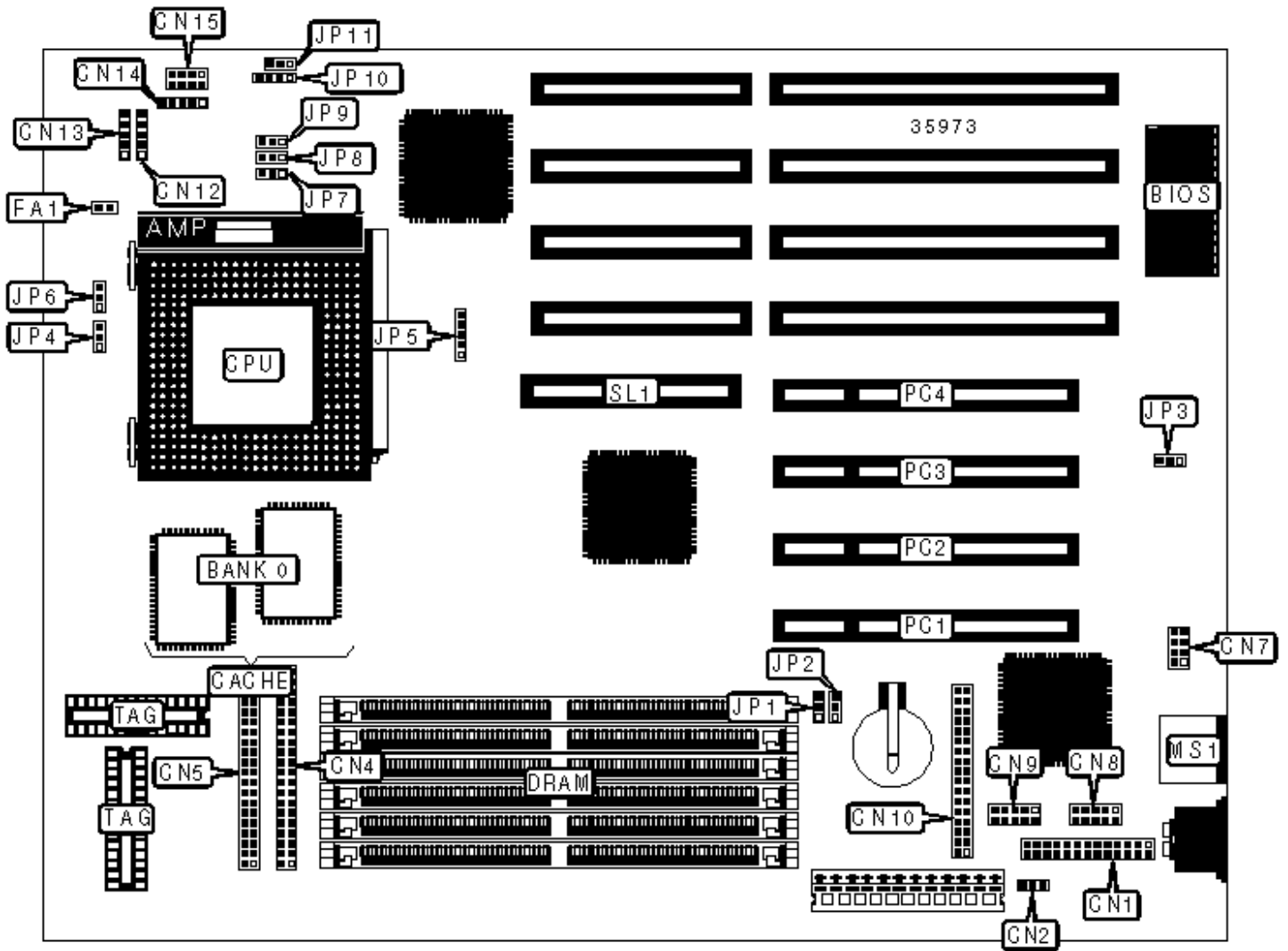


ACER, INC.

ACERPOWER ULTIMA (M3A), M3A

Configuration



CONNECTIONS

Purpose	Location	Purpose	Location
Parallel port	CN1	IDE interface LED	CN12
Soft off power supply	CN2	Speaker	CN13
IDE interface 1	CN4	Power LED & keylock	CN14
IDE interface 2	CN5	LED board connector	CN15
USB connector	CN7	CPU fan power	FA1
Serial port 2	CN8	PS/2 mouse port	MS1
Serial port 1	CN9	32-bit PCI slots	PC1 – PC4
Floppy drive interface	CN10	SCSI/ASM slot	SL1

USER CONFIGURABLE SETTINGS

Function	Label	Position
Factory configured – do not alter	CN6	Unidentified
BIOS type select Acer	JP1	Pins 1 & 2 closed
BIOS type select OEM	JP1	Pins 2 & 3 closed
Password enabled	JP2	Pins 1 & 2 closed
Password disabled	JP2	Pins 2 & 3 closed
Buzzer enabled	JP3	Pins 1 & 2 closed
External speaker enabled	JP3	Pins 2 & 3 closed

Note: The location of CN6 is unidentified.

SIMM CONFIGURATION

Size	Bank 0	Bank 1	Bank 2
8MB	(2) 1M x 36	None	None
16MB	(2) 1M x 36	(2) 1M x 36	None

16MB	(2) 2M x 36	None	None
24MB	(2) 2M x 36	(2) 1M x 36	None
24MB	(2) 1M x 36	(2) 1M x 36	(2) 1M x 36
32MB	(2) 4M x 36	None	None
32MB	(2) 2M x 36	(2) 2M x 36	None
40MB	(2) 4M x 36	(2) 1M x 36	None
48MB	(2) 4M x 36	(2) 2M x 36	None
48MB	(2) 4M x 36	(2) 1M x 36	(2) 1M x 36
56MB	(2) 4M x 36	(2) 2M x 36	(2) 1M x 36
64MB	(2) 8M x 36	None	None
64MB	(2) 4M x 36	(2) 4M x 36	None
80MB	(2) 8M x 36	(2) 2M x 36	None
80MB	(2) 8M x 36	(2) 1M x 36	(2) 1M x 36
88MB	(2) 8M x 36	(2) 2M x 36	(2) 1M x 36
96MB	(2) 8M x 36	(2) 4M x 36	None
96MB	(2) 4M x 36	(2) 4M x 36	(2) 4M x 36

SIMM CONFIGURATION (CON'T)

Size	Bank 0	Bank 1	Bank 2
96MB	(2) 8M x 36	(2) 2M x 36	(2) 2M x 36
104MB	(2) 8M x 36	(2) 4M x 36	(2) 1M x 36
112MB	(2) 8M x 36	(2) 4M x 36	(2) 2M x 36
128MB	(2) 8M x 36	(2) 4M x 36	(2) 4M x 36
128MB	(2) 16M x 36	None	None
128MB	(2) 8M x 36	(2) 8M x 36	None
136MB	(2) 8M x 36	(2) 8M x 36	(2) 1M x 36

136MB	(2) 16M x 36	(2) 1M x 36	None
144MB	(2) 16M x 36	(2) 2M x 36	None
144MB	(2) 16M x 36	(2) 1M x 36	(2) 1M x 36
152MB	(2) 16M x 36	(2) 2M x 36	(2) 1M x 36
160MB	(2) 16M x 36	(2) 4M x 36	None
160MB	(2) 16M x 36	(2) 2M x 36	(2) 2M x 36
168MB	(2) 16M x 36	(2) 4M x 36	(2) 1M x 36
176MB	(2) 16M x 36	(2) 4M x 36	(2) 2M x 36
192MB	(2) 16M x 36	(2) 8M x 36	None
192MB	(2) 16M x 36	(2) 4M x 36	(2) 4M x 36

Note: Board accepts EDO memory.

CACHE CONFIGURATION

Size	Bank 0	TAG
256KB	(2) 32K x 32	Unidentified
512KB	(2) 64K x 32	Unidentified

CPU SPEED SELECTION

CPU speed	Clock speed	Multiplier	JP4	JP5	JP6
75MHz	50MHz	1.5x	2 & 3	1 & 2, 4 & 5	2 & 3
90MHz	60MHz	1.5x	2 & 3	1 & 2, 3 & 4	2 & 3
100MHz	66MHz	1.5x	2 & 3	2 & 3, 4 & 5	2 & 3
120MHz	60MHz	2x	2 & 3	1 & 2, 3 & 4	1 & 2
133MHz	66MHz	2x	2 & 3	2 & 3, 4 & 5	1 & 2
150MHz	60MHz	2.5x	1 & 2	1 & 2, 3 & 4	1 & 2
166MHz	66MHz	2.5x	1 & 2	2 & 3, 4 & 5	1 & 2

200MHz	66MHz	3x	1 & 2	2 & 3, 4 & 5	2 & 3
--------	-------	----	-------	--------------	-------

Note: Pins designated should be in the closed position.

CPU TYPE SELECTION

Type	JP7	JP8	JP9
P54C	Pins 1 & 2 closed	Pins 1 & 2 closed	Pins 1 & 2 closed
P55C	Pins 2 & 3 closed	Pins 2 & 3 closed	Pins 2 & 3 closed

CPU VOLTAGE SELECTION

Voltage	JP11
3.3v	Pins 2 & 3 closed
3.45v	Pins 1 & 2 closed

GREEN PC/RESET SELECTION

Setting	JP10
Green PC enabled	Pins 1 & 2 closed
Reset enabled	Pins 2 & 3 closed
Additional reset switch	Pins 3 & 4 closed