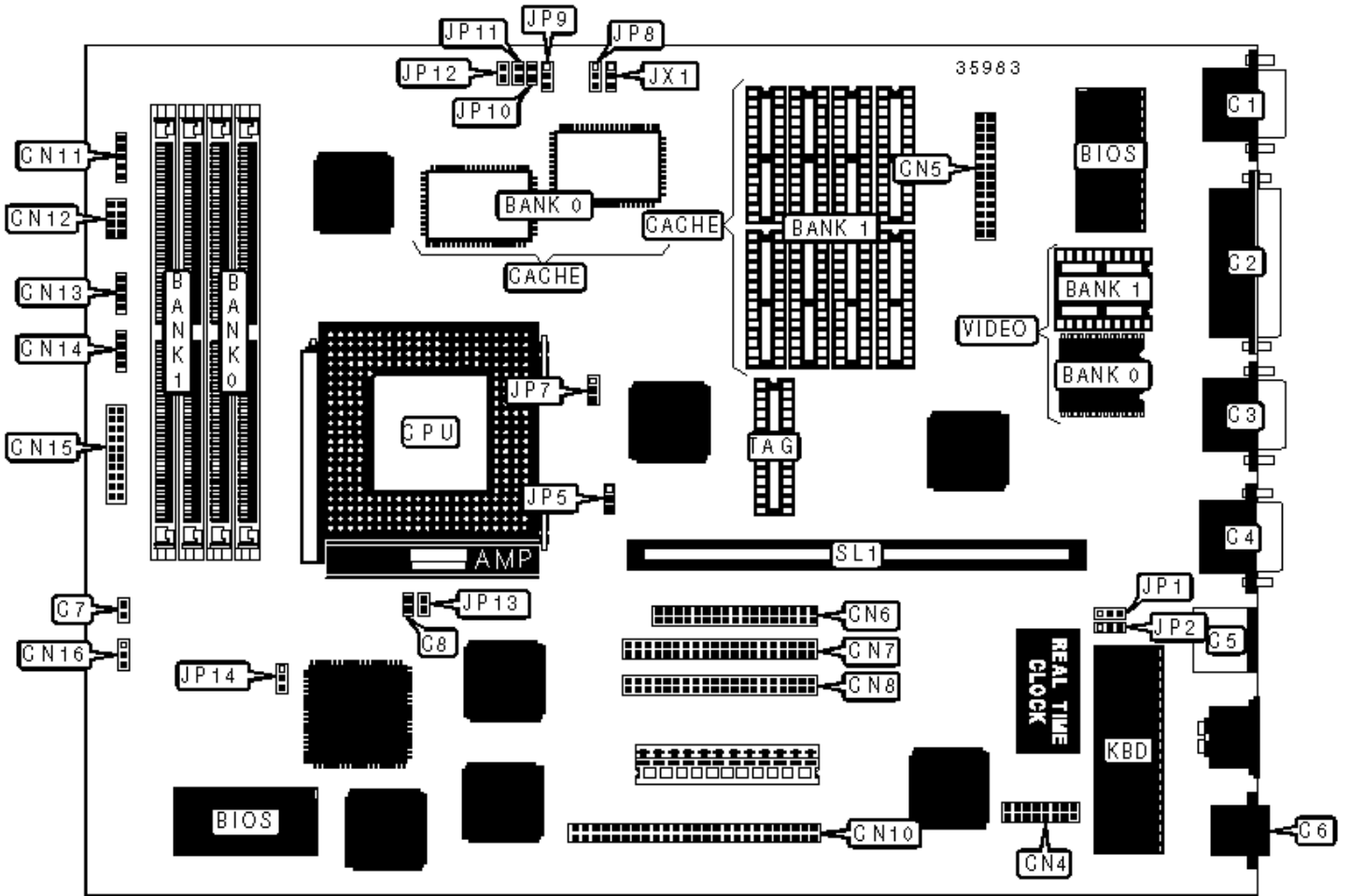


ACER, INC.

ACERALTOS 300 (M1A), M1A

Configuration



CONNECTIONS

Purpose	Location	Purpose	Location
VGA port	C1	SCSI interface	CN10
Parallel port	C2	Power LED & keylock	CN11
Serial port 2	C3	Power LED & keylock	CN12/pins 1 – 4
Serial port 1	C4	Reset switch	CN12/pins 6 & 7
PS/2 mouse port	C5	IDE interface LED	CN13
Ethernet 10BaseT connector	C6	Speaker	CN14
Chassis fan power	C7	Power LED & keylock	CN15/pins 1 – 5
Chassis fan power	C8	Speaker	CN15/pins 7 – 10
AUI interface	CN4	Turbo LED	CN15/pins 12 & 13
VGA feature connector	CN5	Turbo switch	CN15/pins 15 – 17
Floppy drive interface	CN6	Reset switch	CN15/pins 19 & 20
IDE interface 2	CN7	Riser slot	SL1
IDE interface 1	CN8		

USER CONFIGURABLE SETTINGS

Function	Label	Position
» Factory configured - do not alter	CN16	Unidentified
» BIOS type select Acer	JP1	Pins 1 & 2 closed
BIOS type select OEM	JP1	Pins 2 & 3 closed
» Password disabled	JP2	Pins 2 & 3 closed
Password enabled	JP2	Pins 1 & 2 closed

SIMM CONFIGURATION

Size	Bank 0	Bank 1
------	--------	--------

8MB	(2) 1M x 36	None
16MB	(2) 2M x 36	None
16MB	(2) 1M x 36	(2) 1M x 36
24MB	(2) 2M x 36	(2) 1M x 36
32MB	(2) 4M x 36	None
32MB	(2) 2M x 36	(2) 2M x 36
40MB	(2) 4M x 36	(2) 1M x 36
48MB	(2) 4M x 36	(2) 2M x 36
64MB	(2) 8M x 36	None
64MB	(2) 4M x 36	(2) 4M x 36
72MB	(2) 8M x 36	(2) 1M x 36
80MB	(2) 8M x 36	(2) 2M x 36
96MB	(2) 8M x 36	(2) 4M x 36
128MB	(2) 8M x 36	(2) 8M x 36
Note: Board accepts EDO memory.		

SIMM JUMPER CONFIGURATION

Type	JP9	JP14
» Normal	Pins 1 & 2 closed	Pins 1 & 2 closed
EDO	Pins 2 & 3 closed	Pins 2 & 3 closed

CACHE CONFIGURATION

Size	Bank 0	Bank 1	TAG
256KB	None	(8) 32K x 8	(1) 8K x 8
256KB	(2) 32K x 32	None	(1) 32K x 8

VIDEO MEMORY CONFIGURATION

Size	Bank 0	Bank 1
1MB	(2) 256K x 16	None
2MB	(2) 256K x 16	(2) 256K x 16

CPU SPEED SELECTION (CX M1)

CPU speed	Clock speed	Multiplier	JP5	JP8	JX1
120MHz	60MHz	2x	1 & 2	2 & 3	1 & 2
133MHz	66MHz	2x	2 & 3	2 & 3	1 & 2

Note: Pins designated should be in the closed position.

CPU SPEED SELECTION (AM K5)

CPU speed	Clock speed	Multiplier	JP5	JP8	JX1
75MHz	50MHz	1.5x	Open	1 & 2	1 & 2
90MHz	60MHz	1.5x	1 & 2	1 & 2	1 & 2
100MHz	66MHz	1.5x	2 & 3	1 & 2	1 & 2

Note: Pins designated should be in the closed position.

CPU SPEED SELECTION (INTEL)

CPU speed	Clock speed	Multiplier	JP5	JP8	JX1
75MHz	50MHz	1.5x	Open	1 & 2	1 & 2
90MHz	60MHz	1.5x	1 & 2	1 & 2	1 & 2
100MHz	66MHz	1.5x	2 & 3	1 & 2	1 & 2
120MHz	60MHz	2x	1 & 2	2 & 3	1 & 2
133MHz	66MHz	2x	2 & 3	2 & 3	1 & 2

Note: Pins designated should be in the closed position.

CPU TYPE SELECTION

Type	JP10	JP11	JP12	JP13
AM K5	Closed	Closed	Open	Closed
CX M1	Open	Open	Open	Open
Intel	Closed	Closed	Closed	Closed

CPU VOLTAGE SELECTION

Voltage	JP7
VR	Pins 1 & 2 closed
VRE	Pins 2 & 3 closed