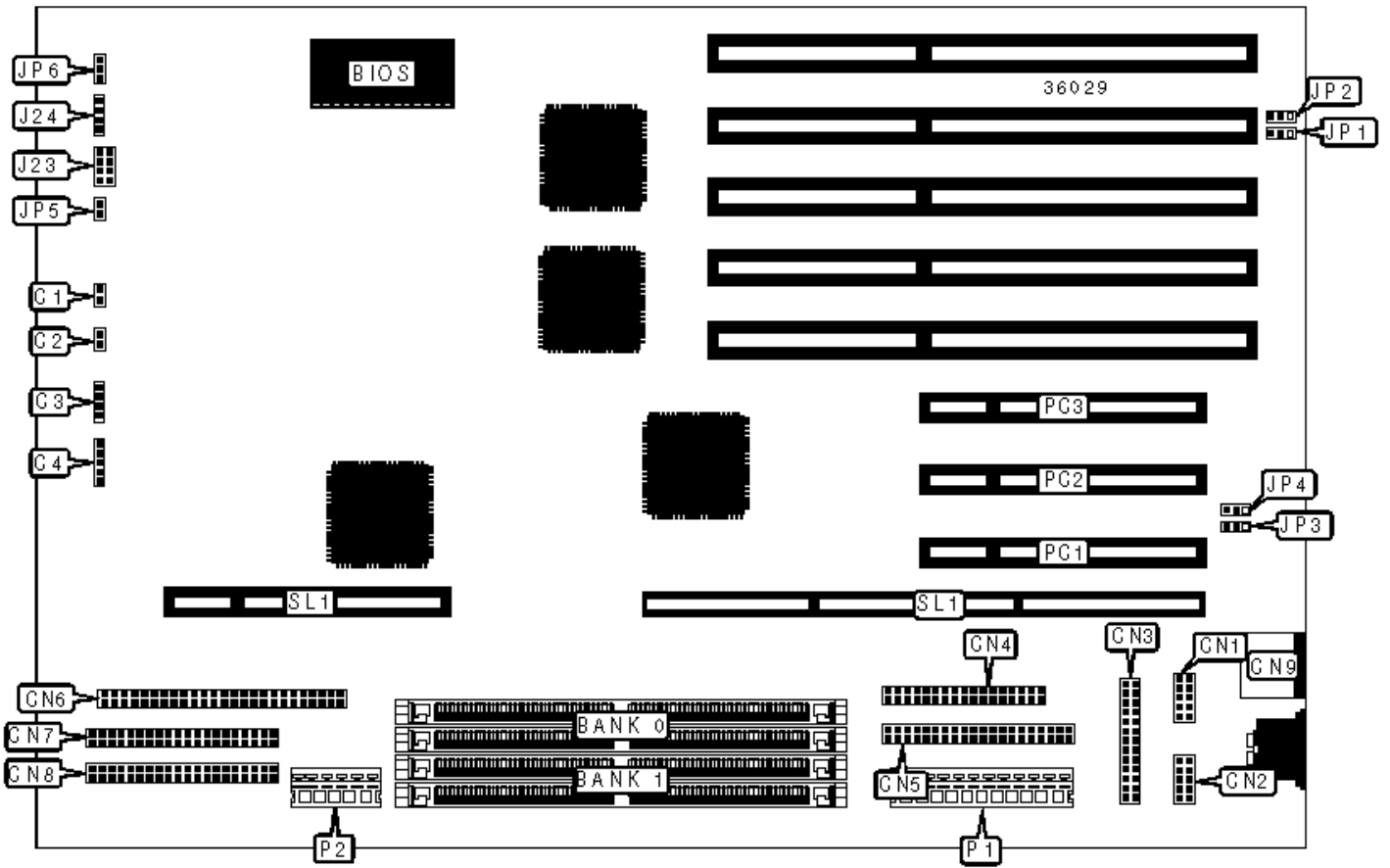


ACER, INC.

ACERALTOS 700ED (M5), 700ES (M5), 7000P (M5), 7000V (M5), (M5)

Configuration



CONNECTIONS

Purpose	Location	Purpose	Location
Chassis fan power	C1	IDE interface	CN7
Chassis fan power	C2	IDE interface	CN8
IDE interface LED	C3	PS/2 mouse port	CN9
Power LED & keylock	C4	Turbo/reset switch	J23
Serial port 1	CN1	Speaker	J24
Serial port 2	CN2	5v power	P1
Parallel port	CN3	3.3v auxiliary power	P2
Floppy drive interface	CN4	32-bit PCI slots	PC1 - PC3
Fixed disk interface	CN5	CPU slot	SL1
SCSI interface	CN6		

USER CONFIGURABLE SETTINGS

Function	Label	Position
» BIOS type select Acer	JP1	Pins 1 & 2 closed
BIOS type select OEM	JP1	Pins 2 & 3 closed
» Password disabled	JP2	Pins 2 & 3 closed
Password enabled	JP2	Pins 1 & 2 closed
» Reset button enabled	JP5	Closed
Reset button disabled	JP5	Open
» Buzzer enabled	JP6	Pins 1 & 2 closed
Speaker enabled	JP6	Pins 2 & 3 closed

SIMM CONFIGURATION (80486DX4 & SINGLE PENTIUM BOARDS INSTALLED)

Size	Bank 0	Bank 1
------	--------	--------

8MB	(2) 1M x 36	None
16MB	(2) 2M x 36	None
16MB	(2) 1M x 36	(2) 1M x 36
24MB	(2) 2M x 36	(2) 1M x 36
32MB	(2) 4M x 36	None
32MB	(2) 2M x 36	(2) 2M x 36
40MB	(2) 4M x 36	(2) 1M x 36
48MB	(2) 4M x 36	(2) 2M x 36
64MB	(2) 8M x 36	None
64MB	(2) 4M x 36	(2) 4M x 36
72MB	(2) 8M x 36	(2) 1M x 36
80MB	(2) 8M x 36	(2) 2M x 36
96MB	(2) 8M x 36	(2) 4M x 36
128MB	(2) 8M x 36	(2) 8M x 36

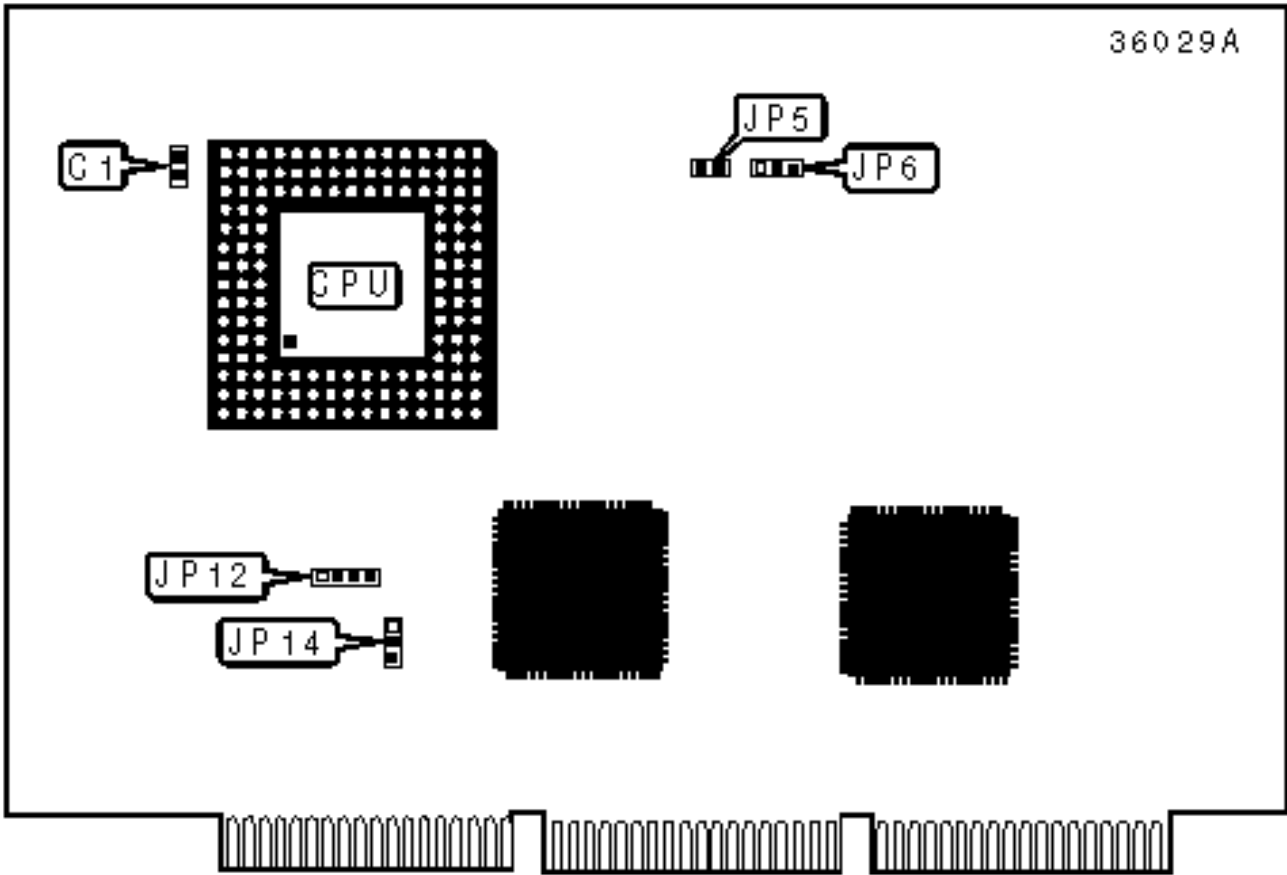
SIMM CONFIGURATION (DUAL PENTIUM BOARD INSTALLED)

Size	Bank 0	Bank 1
8MB	(2) 1M x 36	None
16MB	(2) 2M x 36	None
16MB	(2) 1M x 36	(2) 1M x 36
24MB	(2) 2M x 36	(2) 1M x 36
32MB	(2) 4M x 36	None
32MB	(2) 2M x 36	(2) 2M x 36
40MB	(2) 4M x 36	(2) 1M x 36
48MB	(2) 4M x 36	(2) 2M x 36
64MB	(2) 8M x 36	None

64MB	(2) 4M x 36	(2) 4M x 36
72MB	(2) 8M x 36	(2) 1M x 36
80MB	(2) 8M x 36	(2) 2M x 36
96MB	(2) 8M x 36	(2) 4M x 36
128MB	(2) 8M x 36	(2) 8M x 36
128MB	(2) 16M x 36	None
136MB	(2) 16M x 36	(2) 1M x 36
144MB	(2) 16M x 36	(2) 2M x 36
160MB	(2) 16M x 36	(2) 4M x 36
192MB	(2) 16M x 36	(2) 8M x 36
256MB	(2) 16M x 36	(2) 16M x 36

DMA CHANNEL SELECTION		
Channel	JP3	JP4
» 1	Pins 1 & 2 closed	Pins 1 & 2 closed
3	Pins 2 & 3 closed	Pins 2 & 3 closed

36029A



80486 CPU BOARD

USER CONFIGURABLE SETTINGS

Function	Label	Position
» Factory configured - do not alter	C1	Unidentified

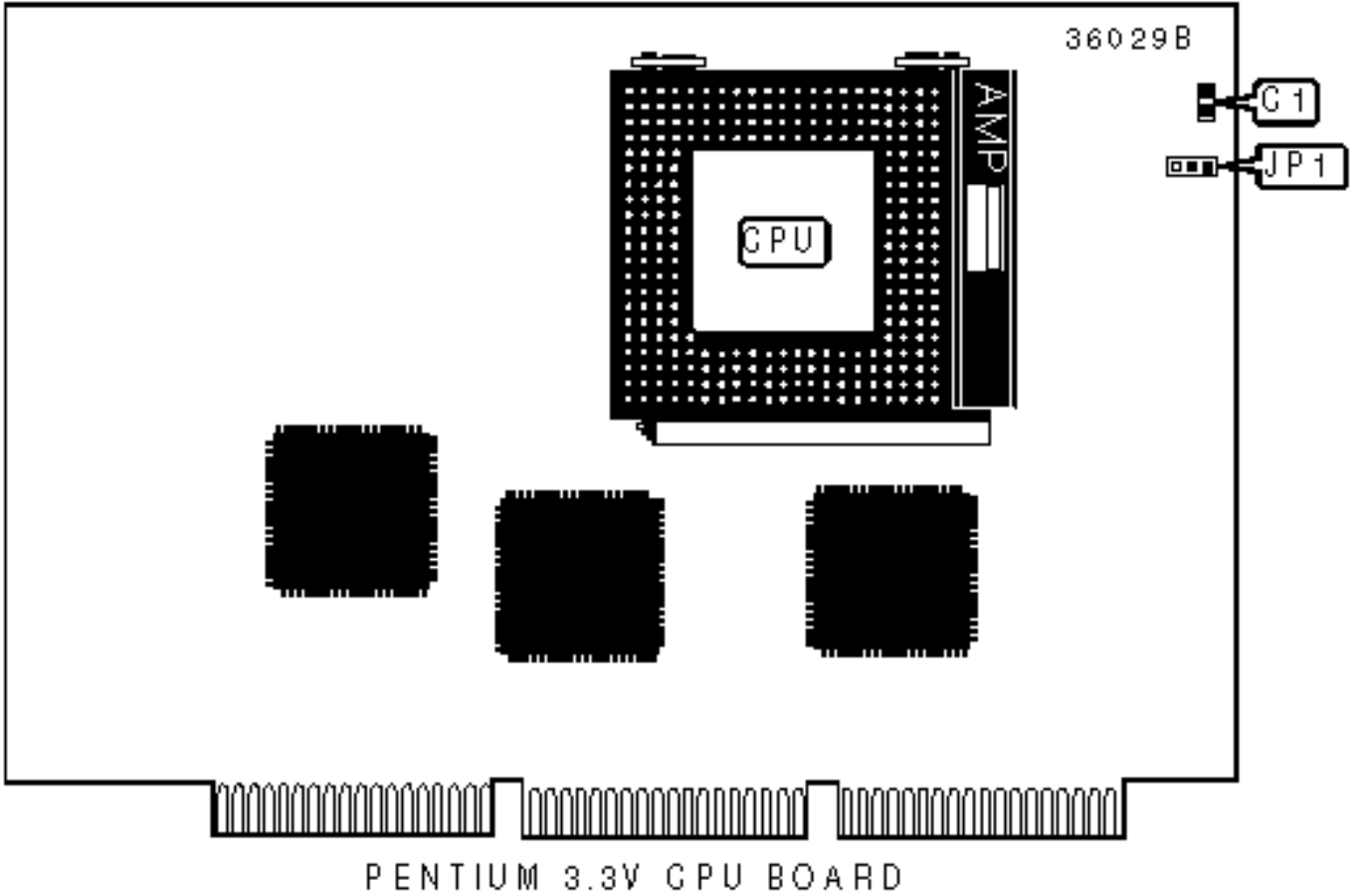
CACHE CONFIGURATION

Note: The location of the cache is unidentified.

CPU SPEED SELECTION

Speed	JP6	JP14
33MHz	Pins 1 & 2 closed	Pins 1 & 2 closed
50iMHz	Pins 2 & 3 closed	Pins 2 & 3 closed
66iMHz	Pins 1 & 2 closed	Pins 1 & 2 closed
100iMHz	Pins 1 & 2 closed	Pins 1 & 2 closed

CPU TYPE SELECTION		
Type	JP5	JP12
Non SL enhanced	Open	Pins 2 & 3 closed
SL enhanced	Closed	Pins 1 & 2, 3 & 4 closed



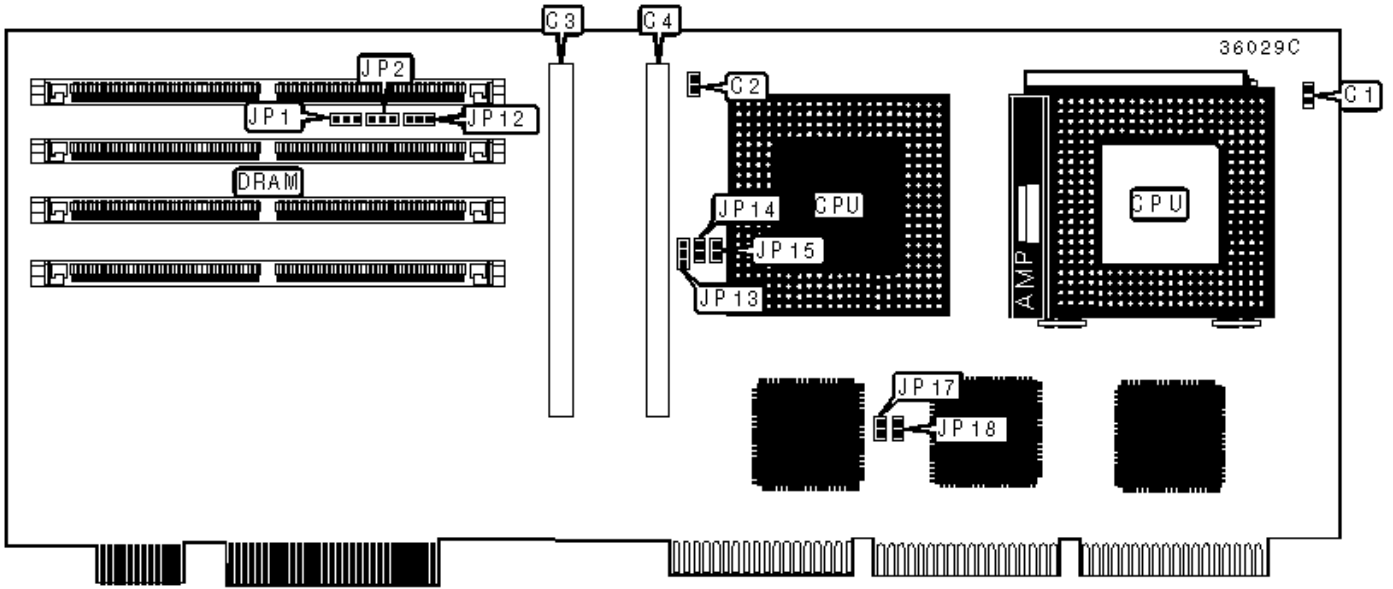
USER CONFIGURABLE SETTINGS		
Function	Label	Position
» Factory configured - do not alter	C1	Unidentified

CACHE CONFIGURATION

Note: The location of the cache is unidentified.

CPU SPEED SELECTION

CPU speed	Clock speed	Multiplier	JP1
90MHz	60MHz	1.5x	Pins 1 & 2 closed
100MHz	66MHz	1.5x	Pins 1 & 2 closed
100MHz	50MHz	2x	Pins 2 & 3 closed



DUAL PENTIUM 3.3V GPU BOARD

USER CONFIGURABLE SETTINGS			
Function	Label	Position	
» Factory configured - do not alter	C1	Unidentified	
» Factory configured - do not alter	C2	Unidentified	
» Factory configured - do not alter	C3	Unidentified	
» Factory configured - do not alter	C4	Unidentified	
» Factory configured - do not alter	JP1	Unidentified	
» Factory configured - do not alter	JP2	Unidentified	
» Factory configured - do not alter	JP13	Unidentified	

SIMM CONFIGURATION (DUAL PENTIUM BOARD)		
Size	Bank 0	Bank 1

8MB	(2) 1M x 36	None
16MB	(2) 2M x 36	None
16MB	(2) 1M x 36	(2) 1M x 36
24MB	(2) 2M x 36	(2) 1M x 36
32MB	(2) 4M x 36	None
32MB	(2) 2M x 36	(2) 2M x 36
40MB	(2) 4M x 36	(2) 1M x 36
48MB	(2) 4M x 36	(2) 2M x 36
64MB	(2) 8M x 36	None
64MB	(2) 4M x 36	(2) 4M x 36
72MB	(2) 8M x 36	(2) 1M x 36
80MB	(2) 8M x 36	(2) 2M x 36
96MB	(2) 8M x 36	(2) 4M x 36
128MB	(2) 8M x 36	(2) 8M x 36
128MB	(2) 16M x 36	None
136MB	(2) 16M x 36	(2) 1M x 36
144MB	(2) 16M x 36	(2) 2M x 36
160MB	(2) 16M x 36	(2) 4M x 36
192MB	(2) 16M x 36	(2) 8M x 36
256MB	(2) 16M x 36	(2) 16M x 36

CACHE CONFIGURATION

Note: The location of the cache is unidentified.

CACHE JUMPER CONFIGURATION

Type	JP12	JP14	JP15	JP17	JP18
------	------	------	------	------	------

Standard	1 & 2	Closed	Closed	Closed	Closed
Synchronous	2 & 3	Open	Open	Open	Open
Note: Pins designated should be in the closed position.					