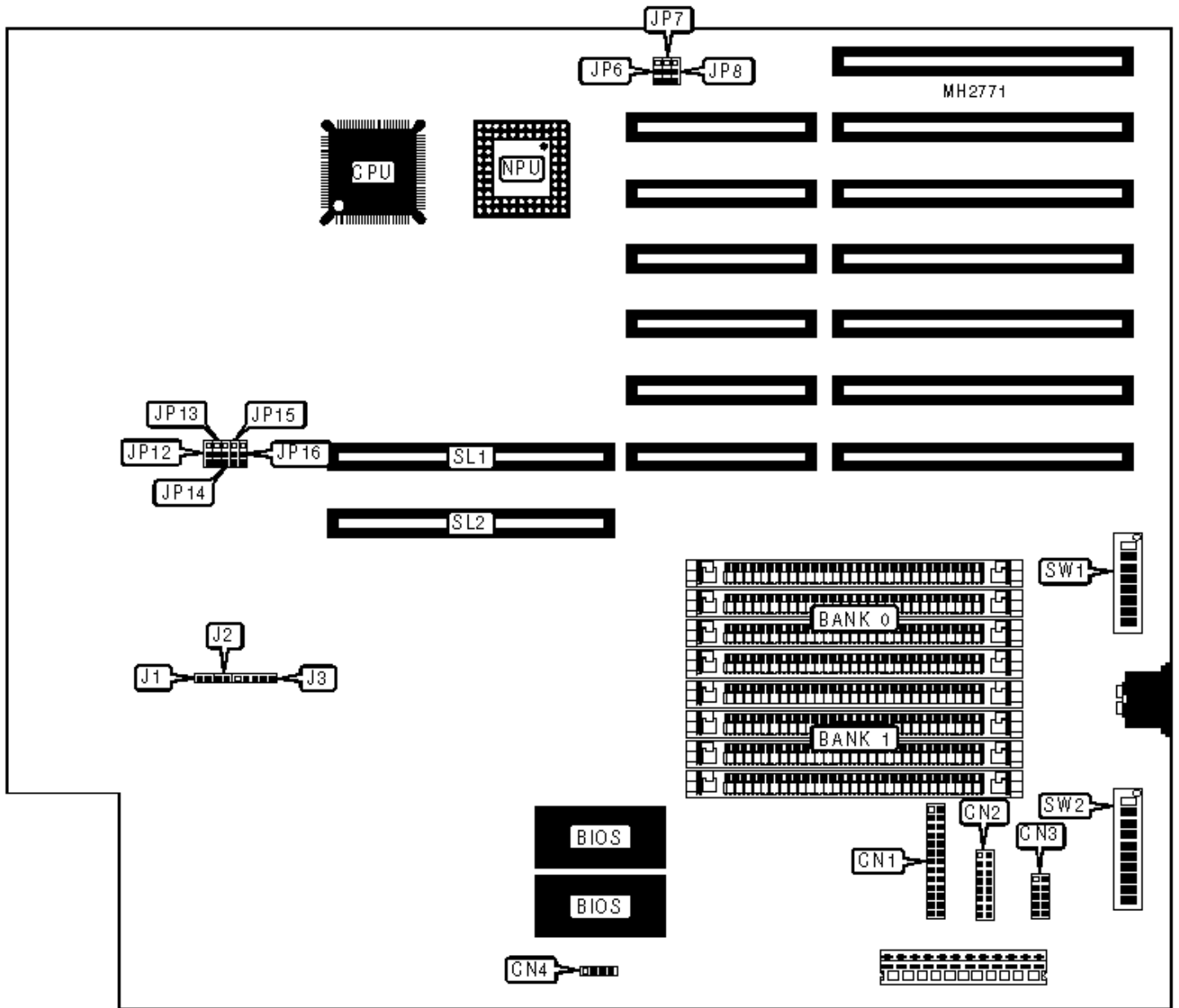


ACER, INC.

1100 25/33

Configuration



CONNECTIONS

Purpose	Location	Purpose	Location
Parallel port	CN1	Turbo LED	J1
Serial port 1	CN2	Reset switch	J2
Serial port 2	CN3	Auxiliary keyboard connector	J3
External battery	CN4	32-bit bus slots	SL1 & SL2

USER CONFIGURABLE SETTINGS

Function	Jumper/Switch	Position
» RAM address select remap to FA0000 - FDFFFF	JP12	pins 1 & 2 closed
RAM address select do not remap	JP12	pins 2 & 3 closed
» Serial port pin select COM1 = 25-pin & COM2 = 9-pin	SW2/1	On
Serial port pin select COM1 = 9-pin & COM2 = 25-pin	SW2/1	Off
» Serial port 1 enabled	SW2/2	Off
Serial port 1 disabled	SW2/2	On
» Serial port 2 enabled	SW2/3	Off
Serial port 2 disabled	SW2/3	On
» Parallel port enabled	SW2/4	Off
Parallel port disabled	SW2/4	On
» BIOS location select RAM BIOS	SW2/8	Off
BIOS location select ROM BIOS	SW2/8	On
» Monitor type select monochrome	SW2/9	Off
Monitor type select CGA	SW2/9	On
» DRAM Bank 1 disabled	SW2/10	On
DRAM Bank 1 enabled	SW2/10	Off

DRAM CONFIGURATION

Size	Bank 0	Bank 1
2MB	(4) 512K x 9	NONE
4MB	(4) 512K x 9	(4) 512K x 9
4MB	(4) 1M x 9	NONE
6MB	(4) 512K x 9	(4) 1M x 9
8MB	(4) 1M x 9	(4) 1M x 9

DRAM JUMPER CONFIGURATION

Size	JP13	JP14	JP15	JP16
2MB	pins 2 & 3 closed	pins 2 & 3 closed	pins 1 & 2 closed	pins 1 & 2 closed
4MB	pins 2 & 3 closed	pins 2 & 3 closed	pins 1 & 2 closed	pins 1 & 2 closed
4MB	pins 1 & 2 closed	pins 1 & 2 closed	pins 2 & 3 closed	pins 2 & 3 closed
6MB	pins 1 & 2 closed	pins 1 & 2 closed	pins 1 & 2 closed	pins 1 & 2 closed
8MB	pins 1 & 2 closed	pins 1 & 2 closed	pins 2 & 3 closed	pins 2 & 3 closed

NPU TYPE CONFIGURATION

Type	JP6	JP7	JP8
None installed	pins 2 & 3 closed	pins 2 & 3 closed	pins 2 & 3 closed
3167	pins 2 & 3 closed	pins 2 & 3 closed	pins 2 & 3 closed
80387SX	pins 1 & 2 closed	pins 1 & 2 closed	pins 1 & 2 closed

BIOS CONFIGURATION

Size	SW1/1	SW1/2	SW1/3	SW1/4
27256	On	Off	Off	On
27128	On	Off	On	Off

27512	Off	On	Off	On
-------	-----	----	-----	----

I/O RECOVERY DELAY CONFIGURATION				
Delay	SW1/5	SW1/6	SW1/7	SW1/8
0	Off	Off	Off	Off
1	Off	Off	Off	On
2	Off	Off	On	Off
3	Off	Off	On	On
4	Off	On	On	On
5	Off	On	Off	On
6	Off	On	On	Off
7	Off	On	On	On
8	On	Off	Off	Off
9	On	Off	Off	On
10	On	Off	On	Off
11	On	Off	On	On
12	On	On	Off	Off
13	On	On	Off	On
14	On	On	On	Off
15	On	On	On	On

PARALLEL PORT CONFIGURATION			
Setting	SW2/5	SW2/6	SW2/7
LPT 1	Off	Off	On
LPT 2	On	On	Off