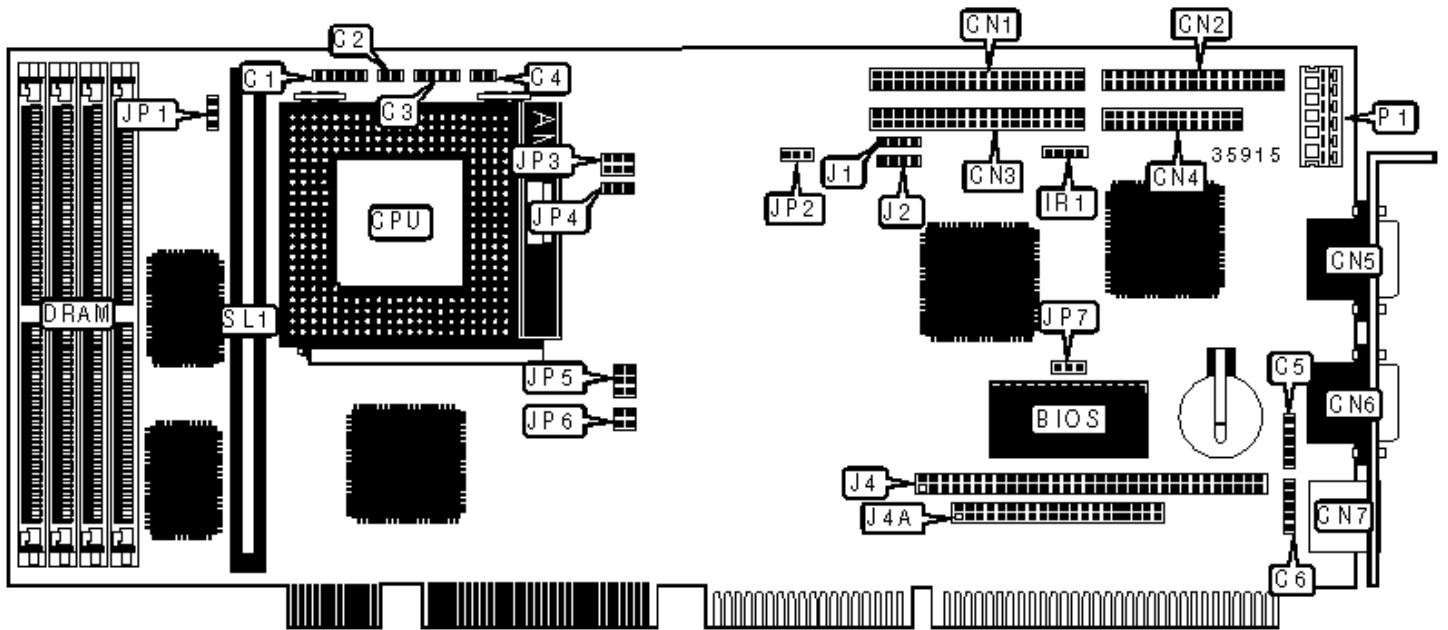


AAEON TECHNOLOGY, INC.

SBC-570N

Configuration



CONNECTIONS

Purpose	Location	Purpose	Location
Power LED & keylock	C1	Serial port 1	CN5
Reset switch	C2	Serial port 2	CN6
Speaker	C3	PS/2 mouse port	CN7
IDE interface LED	C4	IR connector	IR1
PS/2 mouse interface	C5	USB connector 1	J1
Auxiliary keyboard connector	C6	USB connector 2	J2
IDE interface 1	CN1	PC/104 connector	J4
Floppy drive interface	CN2	PC/104 connector	J4A
IDE interface 2	CN3	5v power	P1
Parallel port	CN4	Cache slot	SL1

USER CONFIGURABLE SETTINGS

Function	Label	Position
» Flash BIOS write protect disabled	JP7	Pins 1 & 2 closed
Flash BIOS write protect enabled	JP7	Pins 2 & 3 closed

SIMM CONFIGURATION

Size	Bank 0	Bank 1
8MB	(2) 1M x 36	None
16MB	(2) 2M x 36	None
16MB	(2) 1M x 36	(2) 1M x 36
24MB	(2) 2M x 36	(2) 1M x 36
32MB	(2) 4M x 36	None
32MB	(2) 2M x 36	(2) 2M x 36

40MB	(2) 4M x 36	(2) 1M x 36
48MB	(2) 4M x 36	(2) 2M x 36
64MB	(2) 8M x 36	None
64MB	(2) 4M x 36	(2) 4M x 36
72MB	(2) 8M x 36	(2) 1M x 36
80MB	(2) 8M x 36	(2) 2M x 36
96MB	(2) 8M x 36	(2) 4M x 36
128MB	(2) 8M x 36	(2) 8M x 36
Note: Board accepts EDO memory.		

CACHE CONFIGURATION	
Size	SL1
256KB	256KB module installed
512KB	512KB module installed

CPU SPEED SELECTION (CX 6X86)				
CPU speed	Clock speed	Multiplier	JP5	JP6
120MHz	50MHz	2x	2 & 4, 3 & 5	1 & 2, 3 & 4
133MHz	55MHz	2x	2 & 4, 3 & 5	Open
150MHz	60MHz	2x	2 & 4, 3 & 5	1 & 2
166MHz	66MHz	2x	2 & 4, 3 & 5	3 & 4
Note: Pins designated should be in the closed position.				

CPU SPEED SELECTION (CX 6X86MX)				
CPU speed	Clock speed	Multiplier	JP5	JP6
166MHz	66MHz	2.5x	3 & 5, 4 & 6	3 & 4

200MHz	66MHz	3x	1 & 3, 4 & 6	3 & 4
Note: Pins designated should be in the closed position.				

CPU SPEED SELECTION (AM K5)				
CPU speed	Clock speed	Multiplier	JP5	JP6
75MHz	50MHz	1.5x	1 & 3, 2 & 4	1 & 2, 3 & 4
90MHz	60MHz	1.5x	1 & 3, 2 & 4	1 & 2
100MHz	66MHz	1.5x	1 & 3, 2 & 4	3 & 4
120MHz	60MHz	2x	2 & 4, 3 & 5	1 & 2
133MHz	66MHz	2x	2 & 4, 3 & 5	3 & 4
150MHz	60MHz	2.5x	3 & 5, 4 & 6	1 & 2
Note: Pins designated should be in the closed position.				

CPU SPEED SELECTION (AM K6)				
CPU speed	Clock speed	Multiplier	JP5	JP6
166MHz	66MHz	2.5x	3 & 5, 4 & 6	3 & 4
200MHz	66MHz	3x	1 & 3, 4 & 6	3 & 4
Note: Pins designated should be in the closed position.				

CPU SPEED SELECTION (INTEL)				
CPU speed	Clock speed	Multiplier	JP5	JP6
75MHz	50MHz	1.5x	1 & 3, 2 & 4	1 & 2, 3 & 4
90MHz	60MHz	1.5x	1 & 3, 2 & 4	1 & 2
100MHz	66MHz	1.5x	1 & 3, 2 & 4	3 & 4
120MHz	60MHz	2x	2 & 4, 3 & 5	1 & 2
133MHz	66MHz	2x	2 & 4, 3 & 5	3 & 4

150MHz	60MHz	2.5x	3 & 5, 4 & 6	1 & 2
166MHz	66MHz	2.5x	3 & 5, 4 & 6	3 & 4
200MHz	66MHz	3x	1 & 3, 4 & 6	3 & 4

Note: Pins designated should be in the closed position.

CPU SPEED SELECTION (INTEL MMX)

CPU speed	Clock speed	Multiplier	JP5	JP6
166MHz	66MHz	2.5x	3 & 5, 4 & 6	3 & 4
200MHz	66MHz	3x	1 & 3, 4 & 6	3 & 4

Note: Pins designated should be in the closed position.

CPU TYPE SELECTION

Type	JP3
» Single voltage	Pins 1 & 2, 3 & 4, 5 & 6 closed
Dual voltage	Open

CPU VOLTAGE SELECTION (SINGLE)

Voltage	JP1	JP4
» 3.3v	Pins 1 & 2 closed	Pins 2 & 3 closed
3.45v	Pins 2 & 3 closed	Open
3.52v	Open	Open

CPU VOLTAGE SELECTION (DUAL)

Voltage	JP4
2.8v	Pins 1 & 2 closed
2.9v	Pins 2 & 3 closed

»	3.2v	Open
---	------	------