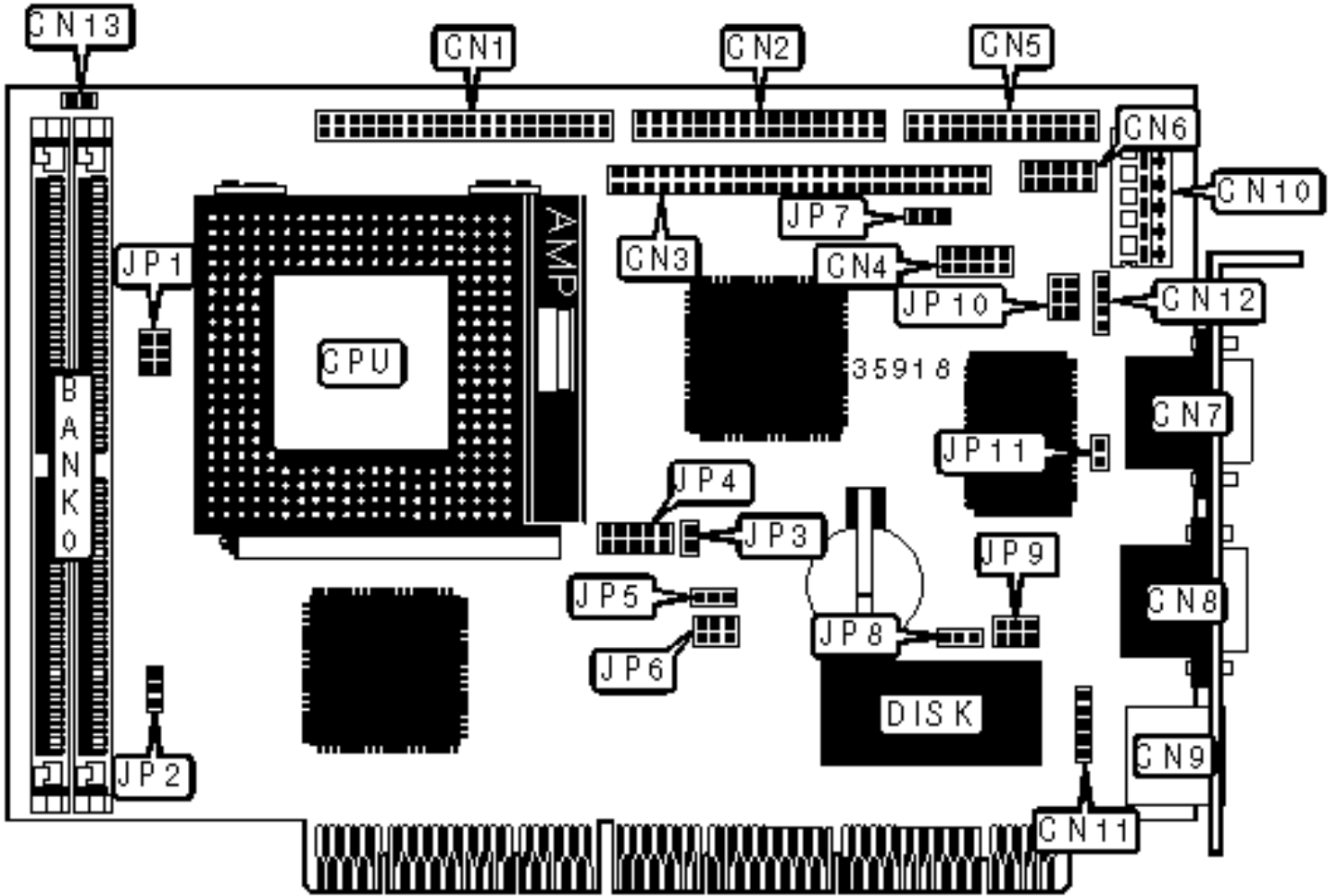


AAEON TECHNOLOGY, INC.

SBC-554V, SBC-555

Configuration



## CONNECTIONS

Purpose	Location	Purpose	Location
IDE interface	CN1	VGA port	CN8
Floppy drive interface	CN2	PS/2 mouse/keyboard port	CN9
LCD connector	CN3	Power connector	CN10
USB connector	CN4	Inverter connector	CN11
Parallel port	CN5	IR connector	CN12
Serial port 2	CN6	IDE interface LED	CN13
Serial port 1	CN7	Reset switch	JP11

## USER CONFIGURABLE SETTINGS

Function	Label	Position
» PCI bus CLK synchronous	JP5	Pins 2 & 3 closed
PCI bus CLK asynchronous	JP5	Pins 1 & 2 closed
» LCD panel voltage select 5v	JP7	Pins 1 & 2 closed
LCD panel voltage select 3.3v	JP7	Pins 2 & 3 closed
» CMOS memory normal operation	JP8	Pins 1 & 2 closed
CMOS memory clear	JP8	Pins 2 & 3 closed

## SIMM CONFIGURATION

Size	Bank 0
8MB	(2) 1M x 36
16MB	(2) 2M x 36
32MB	(2) 4M x 36
64MB	(2) 8M x 36
128MB	(2) 16M x 36

### SIMM VOLTAGE CONFIGURATION

Voltage		JP2
	3.3v	Pins 2 & 3 closed
»	5v	Pins 1 & 2 closed

### CACHE CONFIGURATION

Note: The location of the cache is unidentified.

### VIDEO MEMORY CONFIGURATION

Note: The location of the video memory is unidentified.

### CPU SPEED SELECTION (SGS 6X86)

CPU speed	Clock speed	Multiplier	JP1	JP6
120MHz	50MHz	2x	5 & 6	1 & 2, 3 & 4, 5 & 6
150MHz	60MHz	2x	5 & 6	3 & 4, 5 & 6
166MHz	66MHz	2x	5 & 6	1 & 2, 5 & 6

Note: Pins designated should be in the closed position.

### CPU SPEED SELECTION (IBM 6X86)

CPU speed	Clock speed	Multiplier	JP1	JP6
120MHz	50MHz	2x	5 & 6	1 & 2, 3 & 4, 5 & 6
150MHz	60MHz	2x	5 & 6	3 & 4, 5 & 6
166MHz	66MHz	2x	5 & 6	1 & 2, 5 & 6

Note: Pins designated should be in the closed position.

### CPU SPEED SELECTION (CX 6X86)

CPU speed	Clock speed	Multiplier	JP1	JP6
120MHz	50MHz	2x	5 & 6	1 & 2, 3 & 4, 5 & 6
150MHz	60MHz	2x	5 & 6	3 & 4, 5 & 6
166MHz	66MHz	2x	5 & 6	1 & 2, 5 & 6

Note: Pins designated should be in the closed position.

### CPU SPEED SELECTION (AM K5)

CPU speed	Clock speed	Multiplier	JP1	JP6
75MHz	50MHz	1.5x	Open	1 & 2, 3 & 4, 5 & 6
90MHz	60MHz	1.5x	Open	3 & 4, 5 & 6
100MHz	66MHz	1.5x	Open	1 & 2, 5 & 6
120MHz	60MHz	2x	5 & 6	3 & 4, 5 & 6
133MHz	66MHz	2x	5 & 6	1 & 2, 5 & 6
150MHz	60MHz	2.5x	3 & 4, 5 & 6	3 & 4, 5 & 6
166MHz	66MHz	2.5x	3 & 4, 5 & 6	1 & 2, 5 & 6

Note: Pins designated should be in the closed position.

### CPU SPEED SELECTION (AM K6)

CPU speed	Clock speed	Multiplier	JP1	JP6
166MHz	66MHz	2.5x	3 & 4, 5 & 6	1 & 2, 5 & 6
200MHz	66MHz	3x	3 & 4	1 & 2, 5 & 6
233MHz	66MHz	3.5x	Open	1 & 2, 5 & 6

Note: Pins designated should be in the closed position.

### CPU SPEED SELECTION (INTEL)

CPU speed	Clock speed	Multiplier	JP1	JP6
75MHz	50MHz	1.5x	Open	1 & 2, 3 & 4, 5 & 6
90MHz	60MHz	1.5x	Open	3 & 4, 5 & 6
100MHz	66MHz	1.5x	Open	1 & 2, 5 & 6
120MHz	60MHz	2x	5 & 6	3 & 4, 5 & 6
133MHz	66MHz	2x	5 & 6	1 & 2, 5 & 6
150MHz	60MHz	2.5x	3 & 4, 5 & 6	3 & 4, 5 & 6
166MHz	66MHz	2.5x	3 & 4, 5 & 6	1 & 2, 5 & 6
200MHz	66MHz	3x	3 & 4	1 & 2, 5 & 6

Note: Pins designated should be in the closed position.

### CPU SPEED SELECTION (INTEL MMX)

CPU speed	Clock speed	Multiplier	JP1	JP6
166MHz	66MHz	2.5x	3 & 4, 5 & 6	1 & 2, 5 & 6
200MHz	66MHz	3x	3 & 4	1 & 2, 5 & 6

Note: Pins designated should be in the closed position.

### CPU VOLTAGE SELECTION (SINGLE)

Voltage		JP3
»	3.3v	Closed
	3.5v	Open

### CPU VOLTAGE SELECTION (DUAL)

Voltage		JP4
	2.0v	Open
	2.1v	Pins 1 & 2 closed

	2.2v	Pins 3 & 4 closed
	2.3v	Pins 1 & 2, 3 & 4 closed
	2.4v	Pins 5 & 6 closed
	2.5v	Pins 1 & 2, 5 & 6 closed
	2.6v	Pins 3 & 4, 5 & 6 closed
	2.7v	Pins 1 & 2, 3 & 4, 5 & 6 closed
»	2.8v	Pins 7 & 8 closed
	2.9v	Pins 1 & 2, 7 & 8 closed
	3.0v	Pins 3 & 4, 7 & 8 closed
	3.1v	Pins 1 & 2, 3 & 4, 7 & 8 closed
	3.2v	Pins 5 & 6, 7 & 8 closed
	3.3v	Pins 3 & 4, 5 & 6, 7 & 8 closed
	3.4v	Pins 1 & 2, 3 & 4, 5 & 6, 7 & 8 closed

### SSD ADDRESS SELECTION

Address		JP9
	CC000	Open
	D0000	Pins 5 & 6 closed
	D4000	Pins 3 & 4 closed
»	D8000	Pins 3 & 4, 5 & 6 closed
	DC000	Pins 1 & 2 closed

### SERIAL PORT 2 SELECTION

Setting		JP10
»	RS-232	Pins 1 & 2 closed
	RS-422	Pins 3 & 4 closed

	RS-485	Pins 5 & 6 closed
--	--------	-------------------