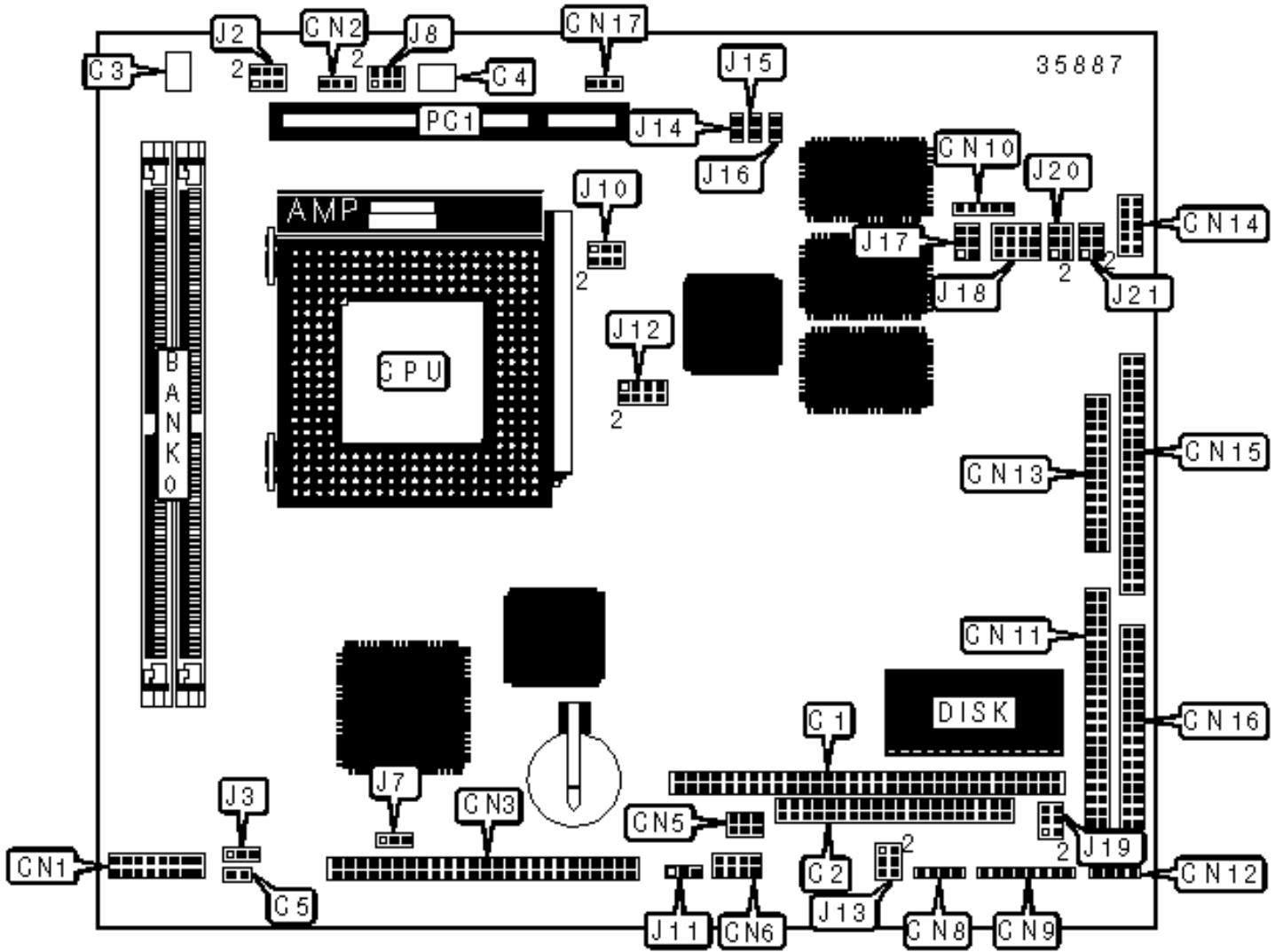


AAEON TECHNOLOGY, INC.

PCM-5894

Configuration



CONNECTIONS

Purpose	Location	Purpose	Location
PC/104 connector	C1	5v power	CN12
PC/104 connector	C2	Parallel port	CN13
VGA port	CN1	Ethernet 10/100BaseT connector	CN14
Chassis fan power	CN2	Serial port	CN15
Flat panel connector	CN3	Floppy drive interface	CN16
USB connector	CN5	Chassis fan power	CN17
Front panel connector	CN6	TX LED	J14
-5v power	CN8	RX LED	J15
PS/2 mouse/keyboard interface	CN9	LINK LED	J16
IR connector	CN10	32-bit PCI slots	PC1
IDE interface	CN11		

USER CONFIGURABLE SETTINGS

Function	Label	Position
» Factory configured - do not alter	C3	Unidentified
» Factory configured - do not alter	C4	Unidentified
» Factory configured - do not alter	C5	Unidentified
» CMOS memory normal operation	J7	Pins 1 & 2 closed
CMOS memory clear	J7	Pins 2 & 3 closed

SIMM CONFIGURATION

Size	Bank 2
8MB	(2) 1M x 36
16MB	(2) 2M x 36

32MB	(2) 4M x 36
64MB	(2) 8M x 36
128MB	(2) 16M x 36

CACHE CONFIGURATION

Note: The location of the cache is unidentified.

VIDEO MEMORY CONFIGURATION

Note: The location of the video memory is unidentified.

CPU SPEED SELECTION (CX 6X86)

CPU speed	Clock speed	Multiplier	J2	J8
120MHz	50MHz	2x	1 & 2, 3 & 4	1 & 2
133MHz	55MHz	2x	1 & 2, 3 & 4, 5 & 6	1 & 2
150MHz	60MHz	2x	1 & 2	1 & 2
166MHz	66MHz	2x	Open	1 & 2
200MHz	75MHz	2x	3 & 4, 5 & 6	1 & 2

Note: Pins designated should be in the closed position.

CPU SPEED SELECTION (IBM 6X86)

CPU speed	Clock speed	Multiplier	J2	J8
120MHz	50MHz	2x	1 & 2, 3 & 4	1 & 2
133MHz	55MHz	2x	1 & 2, 3 & 4, 5 & 6	1 & 2
150MHz	60MHz	2x	1 & 2	1 & 2
166MHz	66MHz	2x	Open	1 & 2
200MHz	75MHz	2x	3 & 4, 5 & 6	1 & 2

Note: Pins designated should be in the closed position.

CPU SPEED SELECTION (SGS 6X86)

CPU speed	Clock speed	Multiplier	J2	J8
120MHz	50MHz	2x	1 & 2, 3 & 4	1 & 2
133MHz	55MHz	2x	1 & 2, 3 & 4, 5 & 6	1 & 2
150MHz	60MHz	2x	1 & 2	1 & 2
166MHz	66MHz	2x	Open	1 & 2
200MHz	75MHz	2x	3 & 4, 5 & 6	1 & 2

Note: Pins designated should be in the closed position.

CPU SPEED SELECTION (AM K5)

CPU speed	Clock speed	Multiplier	J2	J8
75MHz	50MHz	1.5x	1 & 2, 3 & 4	Open
90MHz	60MHz	1.5x	1 & 2	Open
100MHz	66MHz	1.5x	Open	Open
120MHz	60MHz	2x	1 & 2	1 & 2
133MHz	66MHz	2x	Open	1 & 2
150MHz	60MHz	2.5x	1 & 2	1 & 2, 3 & 4
166MHz	66MHz	2.5x	Open	1 & 2, 3 & 4

Note: Pins designated should be in the closed position.

CPU SPEED SELECTION (AM K6)

CPU speed	Clock speed	Multiplier	J2	J8
166MHz	66MHz	2.5x	Open	1 & 2, 3 & 4
200MHz	66MHz	3x	Open	3 & 4

233MHz	66MHz	3.5x	Open	Open
Note: Pins designated should be in the closed position.				

CPU SPEED SELECTION (INTEL)				
CPU speed	Clock speed	Multiplier	J2	J8
75MHz	50MHz	1.5x	1 & 2, 3 & 4	Open
90MHz	60MHz	1.5x	1 & 2	Open
100MHz	66MHz	1.5x	Open	Open
120MHz	60MHz	2x	1 & 2	1 & 2
133MHz	66MHz	2x	Open	1 & 2
150MHz	60MHz	2.5x	1 & 2	1 & 2, 3 & 4
166MHz	66MHz	2.5x	Open	1 & 2, 3 & 4
180MHz	60MHz	3x	1 & 2	3 & 4
200MHz	66MHz	3x	Open	3 & 4
Note: Pins designated should be in the closed position.				

CPU SPEED SELECTION (INTEL MMX)				
CPU speed	Clock speed	Multiplier	J2	J8
166MHz	66MHz	2.5x	Open	1 & 2, 3 & 4
200MHz	66MHz	3x	Open	3 & 4
Note: Pins designated should be in the closed position.				

CPU TYPE SELECTION		
Type		J10
	Single voltage	Pins 1 & 3, 2 & 4 closed
»	Dual voltage	Pins 3 & 5, 4 & 6 closed

CPU VOLTAGE SELECTION

Voltage		J12
	2.1v	Open
	2.2v	Pins 7 & 8 closed
	2.3v	Pins 5 & 6 closed
	2.4v	Pins 5 & 6, 7 & 8 closed
	2.5v	Pins 3 & 4 closed
	2.6v	Pins 3 & 4, 7 & 8 closed
	2.7v	Pins 3 & 4, 5 & 6 closed
»	2.8v	Pins 3 & 4, 5 & 6, 7 & 8 closed
	2.9v	Pins 1 & 2 closed
	3.0v	Pins 1 & 2, 7 & 8 closed
	3.1v	Pins 1 & 2, 5 & 6 closed
	3.2v	Pins 1 & 2, 5 & 6, 7 & 8 closed
	3.3v	Pins 1 & 2, 3 & 4 closed
	3.4v	Pins 1 & 2, 3 & 4, 7 & 8 closed
	3.5v	Pins 1 & 2, 3 & 4, 5 & 6 closed
	3.6v	Pins 1 & 2, 3 & 4, 5 & 6, 7 & 8 closed

SERIAL PORT 3 & 4 RI SELECTION

Setting		J20	J21
»	RI	Pins 5 & 6 closed	Pins 5 & 6 closed
	5v	Pins 3 & 4 closed	Pins 3 & 4 closed
	12v	Pins 1 & 2 closed	Pins 1 & 2 closed

SERIAL PORT INTERRUPT SELECTION

COM		IRQ	J19
»	COM3	IRQ5	Pins 2 & 4, 3 & 5 closed
	COM4	IRQ10	Pins 2 & 4, 3 & 5 closed
	COM3	IRQ10	Pins 1 & 3, 4 & 6 closed
	COM4	IRQ5	Pins 1 & 3, 4 & 6 closed

SERIAL PORT SELECTION

Type		J17	J18
»	RS-232	Pins 1 & 2 closed	Pins 1 & 2, 4 & 5, 7 & 8, 10 & 11 closed
	RS-422	Pins 3 & 4 closed	Pins 2 & 3, 5 & 6, 8 & 9, 11 & 12 closed
	RS-485	Pins 5 & 6 closed	Pins 2 & 3, 5 & 6, 8 & 9, 11 & 12 closed

LCD VOLTAGE SELECTION

Voltage		J3	J11
	3.3v	Pins 2 & 3 closed	Pins 2 & 3 closed
»	5v	Pins 1 & 2 closed	Pins 1 & 2 closed

DISK ADDRESS SELECTION

Address		J13
»	DC00	Pins 1 & 2 closed
	D800	Pins 3 & 4, 5 & 6 closed
	D400	Pins 3 & 4 closed
	D000	Pins 5 & 6 closed
	CC00	Open
	Disabled	Pins 1 & 2, 3 & 4, 5 & 6 closed

