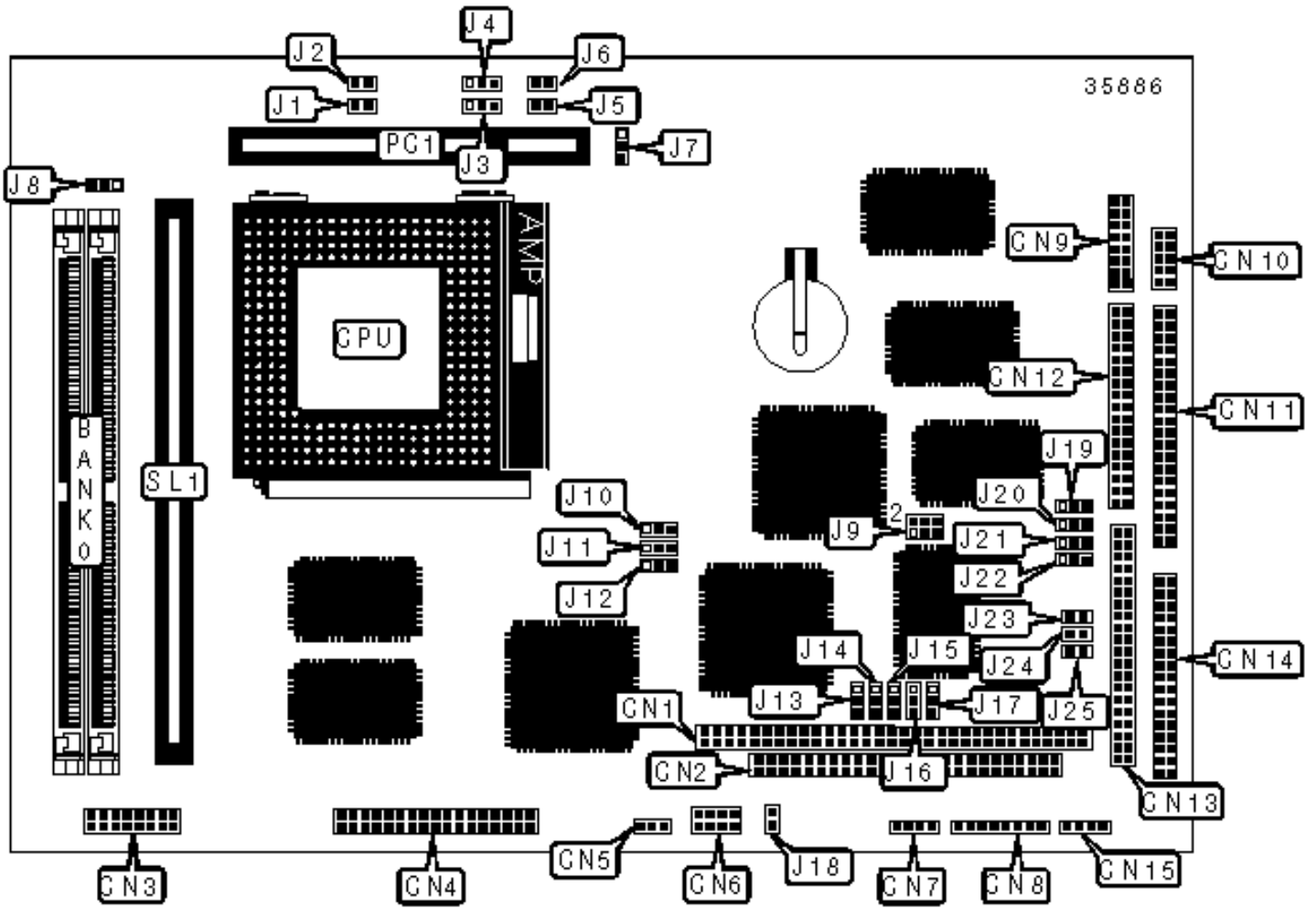


AAEON TECHNOLOGY, INC.

PCM-5890

Configuration



CONNECTIONS

Purpose	Location	Purpose	Location
PC/104 connector	CN1	Serial port	CN11
PC/104 connector	CN2	Parallel port	CN12
VGA interface	CN3	IDE interface	CN13
Flat panel connector	CN4	Floppy drive interface	CN14
Chassis fan power	CN5	Power connector	CN15
Front panel connector	CN6	Ethernet LED	J5
Power connector	CN7	Ethernet LED	J6
PS/2 mouse/keyboard interface	CN8	32-bit PCI slot	PC1
Ethernet 10Base2/5 connector	CN9	Cache slot	SL1
Ethernet 10BaseT connector	CN10		

USER CONFIGURABLE SETTINGS

Function	Label	Position
» CMOS memory normal operation	J7	Pins 1 & 2 closed
CMOS memory clear	J7	Pins 2 & 3 closed
» Parallel port IRQ select IRQ7	J17	Pins 2 & 3 closed
Parallel port IRQ select IRQ5	J17	Pins 1 & 2 closed
» Buzzer enabled	J18	Closed
Buzzer disabled	J18	Open
» Watchdog timer invokes system reset enabled	J23	Closed
Watchdog timer invokes system reset disabled	J23	Open
» Watchdog timer invokes IRQ15 enabled	J24	Closed
Watchdog timer invokes IRQ15 disabled	J24	Open
» Watchdog timer enabled	J25	Closed

	Watchdog timer disabled	J25	Open
--	-------------------------	-----	------

SIMM CONFIGURATION	
Size	Bank 2
8MB	(2) 1M x 36
16MB	(2) 2M x 36
32MB	(2) 4M x 36
64MB	(2) 8M x 36
Note: Board accepts EDO memory.	

CACHE CONFIGURATION	
Size	SL1
256KB	256KB module installed
512KB	512KB module installed

CACHE TYPE CONFIGURATION	
Type	J8
» Synchronous	Pins 1 & 2 closed
Asynchronous	Pins 2 & 3 closed

VIDEO MEMORY CONFIGURATION
Note: The location of the video memory is unidentified.

CPU SPEED SELECTION (CX M1)							
CPU speed	Clock speed	Multiplier	J1	J2	J10	J11	J12
120MHz	50MHz	2x	Closed	Open	2 & 3	1 & 2	2 & 3

150MHz	60MHz	2x	Closed	Open	1 & 2	1 & 2	1 & 2
166MHz	66MHz	2x	Closed	Open	2 & 3	2 & 3	1 & 2
Note: Pins designated should be in the closed position.							

CPU SPEED SELECTION (AM K5)							
CPU speed	Clock speed	Multiplier	J1	J2	J10	J11	J12
75MHz	50MHz	1.5x	Open	Open	2 & 3	1 & 2	2 & 3
90MHz	60MHz	1.5x	Open	Open	1 & 2	1 & 2	1 & 2
100MHz	66MHz	1.5x	Open	Open	2 & 3	2 & 3	1 & 2
120MHz	60MHz	2x	Closed	Open	1 & 2	1 & 2	1 & 2
133MHz	66MHz	2x	Closed	Open	2 & 3	2 & 3	1 & 2
166MHz	66MHz	2.5x	Closed	Closed	2 & 3	2 & 3	1 & 2
Note: Pins designated should be in the closed position.							

CPU SPEED SELECTION (INTEL)							
CPU speed	Clock speed	Multiplier	J1	J2	J10	J11	J12
75MHz	50MHz	1.5x	Open	Open	2 & 3	1 & 2	2 & 3
90MHz	60MHz	1.5x	Open	Open	1 & 2	1 & 2	1 & 2
100MHz	66MHz	1.5x	Open	Open	2 & 3	2 & 3	1 & 2
120MHz	60MHz	2x	Closed	Open	1 & 2	1 & 2	1 & 2
133MHz	66MHz	2x	Closed	Open	2 & 3	2 & 3	1 & 2
150MHz	60MHz	2.5x	Closed	Closed	1 & 2	1 & 2	1 & 2
166MHz	66MHz	2.5x	Closed	Closed	2 & 3	2 & 3	1 & 2
Note: Pins designated should be in the closed position.							

CPU VOLTAGE SELECTION

Voltage		J3	J4
»	3.3v	Pins 1 & 2 closed	Open
	3.45v	Pins 2 & 3 closed	Open
	3.6v	Open	Pins 1 & 2 closed
	3.8v	Open	Pins 2 & 3 closed

DMA CHANNEL SELECTION			
Channel		J13	J14
»	1	Pins 1 & 2 closed	Pins 1 & 2 closed
	3	Pins 2 & 3 closed	Pins 2 & 3 closed

SERIAL PORT INTERRUPT SELECTION				
COM		IRQ	J15	J16
»	COM3	IRQ5	Pins 2 & 3 closed	Pins 1 & 2 closed
	COM4	IRQ10	Pins 2 & 3 closed	Pins 1 & 2 closed
	COM3	IRQ10	Pins 1 & 2 closed	Pins 2 & 3 closed
	COM4	IRQ5	Pins 1 & 2 closed	Pins 2 & 3 closed

SERIAL PORT SELECTION						
Type		J9	J19	J20	J21	J22
»	RS-232	1 & 2	1 & 2	1 & 2	1 & 2	1 & 2
	RS-422	3 & 4	2 & 3	2 & 3	2 & 3	2 & 3
	RS-485	5 & 6	2 & 3	2 & 3	2 & 3	2 & 3

Note: Pins designated should be in the closed position.