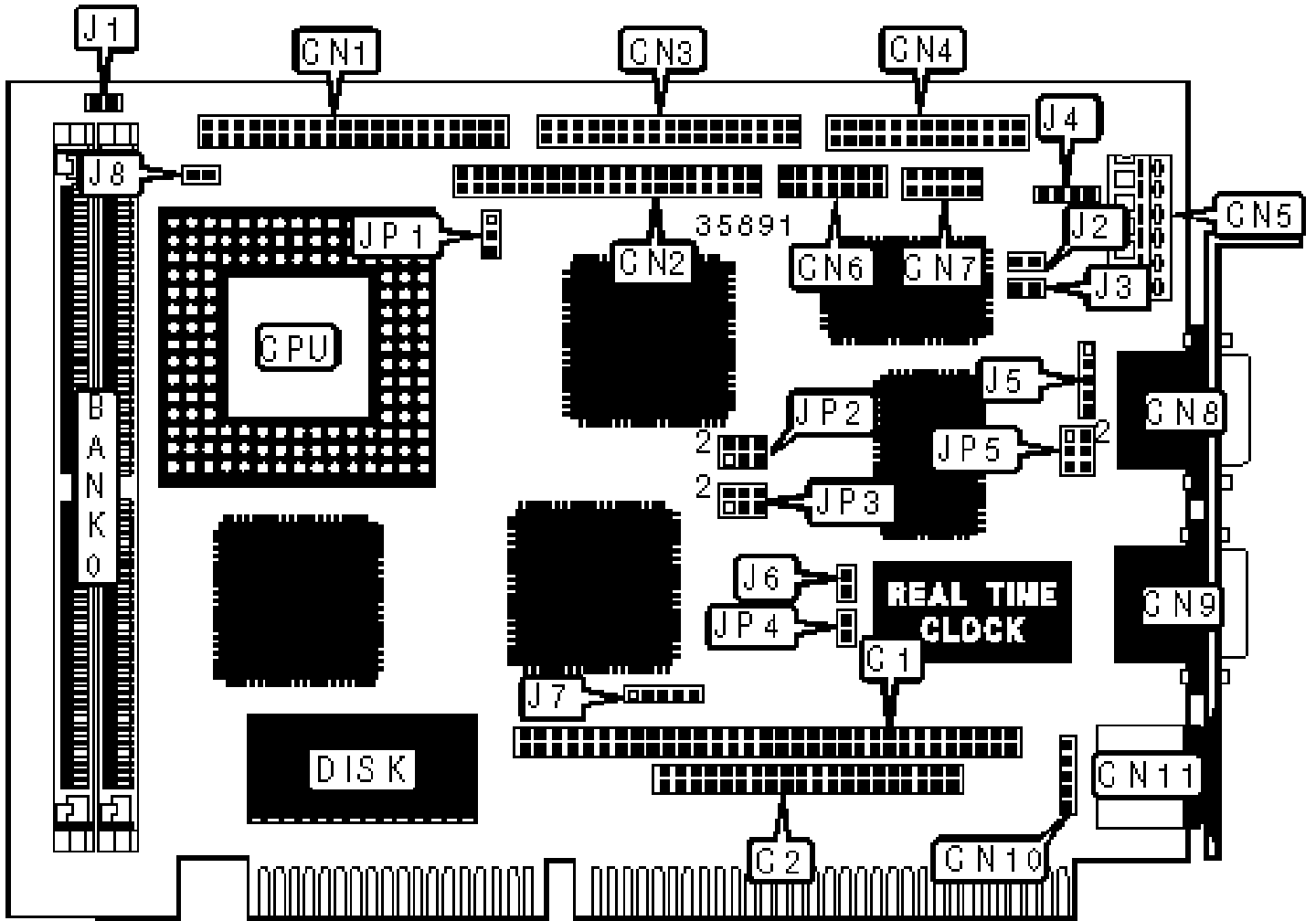


AAEON TECHNOLOGY, INC.

SBC-456E

Configuration



CONNECTIONS

Purpose	Location	Purpose	Location
PC/104 connector	C1	Auxiliary keyboard connector	CN10
PC/104 connector	C2	PS/2 mouse port	CN11
IDE interface	CN1	IDE interface LED	J1
LCD connector	CN2	Ethernet link signal LED	J2
Floppy drive interface	CN3	Ethernet active signal LED	J3
Parallel port	CN4	Speaker	J4
5v power	CN5	IR connector	J5
Serial port	CN6	Power LED & keylock	J7
Ethernet connector	CN7	Chassis fan power	J8
Serial port	CN8	Reset switch	JP4
VGA port	CN9		

USER CONFIGURABLE SETTINGS

Function	Label	Position
» CMOS memory normal operation	J6	Open
CMOS memory clear	J6	Closed
» SHF CLK from C & T chipset	JP1	Pins 2 & 3 closed
ASHF CLK from C & T chipset	JP1	Pins 1 & 2 closed

SIMM CONFIGURATION

Size	Bank 0
8MB	(2) 1M x 36
16MB	(2) 2M x 36
32MB	(2) 4M x 36

64MB	(2) 8M x 36
Note: Board accepts EDO memory.	

CACHE CONFIGURATION
Note: The location of the cache is unidentified.

VIDEO MEMORY CONFIGURATION
Note: The location of the video memory is unidentified.

SERIAL PORT SELECTION	
Type	JP5
»	RS-232 Pins 1 & 2 closed
	RS-422 Pins 3 & 4 closed
	RS-485 Pins 5 & 6 closed

LCD VOLTAGE SELECTION	
Voltage	JP2
	3.3v Pins 1 & 3, 2 & 4 closed
»	5v Pins 3 & 5, 4 & 6 closed

DISK ADDRESS SELECTION	
Address	JP3
CC00	Open
D000	Pins 1 & 2 closed
D400	Pins 3 & 4 closed
D800	Pins 1 & 2, 3 & 4 closed

DC00

Pins 5 & 6 closed