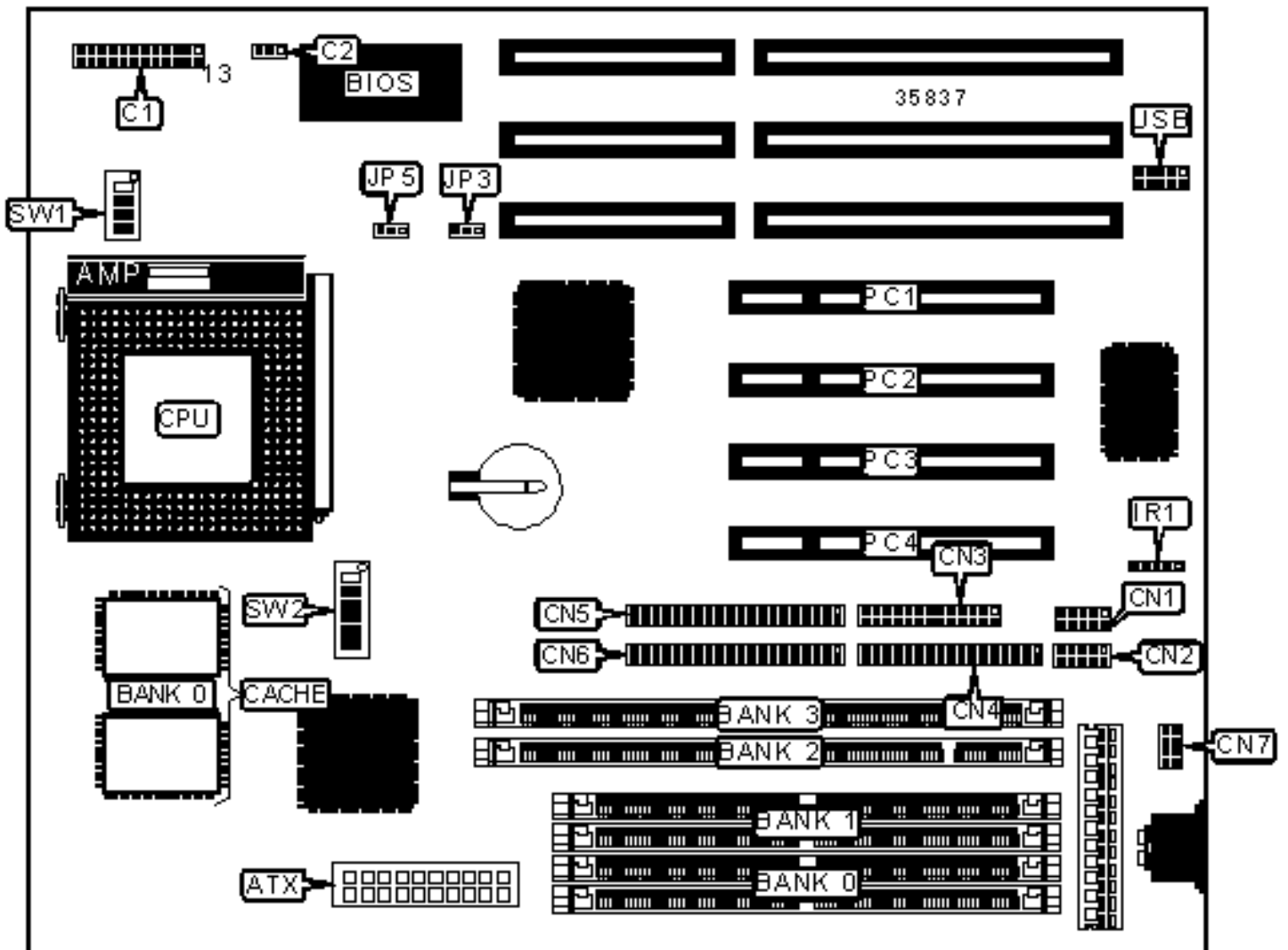


A-TREND TECHNOLOGY CORPORATION

ATC-5050

Configuration



CONNECTIONS

Purpose	Location	Purpose	Location
ATX power connector	ATX	Serial port 2	CN2
Reset switch	C1/pins 1 & 2	Parallel port	CN3
Green PC connector	C1/pins 4 & 5	Floppy drive interface	CN4
Turbo LED	C1/pins 7 & 8	IDE interface 2	CN5
IDE interface LED	C1/pins 10 & 11	IDE interface 1	CN6
Soft off power supply	C1/pins 12 & 24	PS/2 mouse interface	CN7
Speaker	C1/pins 13 – 16	IR connector	IR1
Power LED & keylock	C1/pins 18 & 20	32-bit PCI slots	PC1 – PC4
Chassis fan power	C2	USB connector	USB
Serial port 1	CN1		

USER CONFIGURABLE SETTINGS

Function	Label	Position
» CMOS memory normal operation	JP3	Pins 2 & 3 closed
CMOS memory clear	JP3	Pins 1 & 2 closed
Power supply select AT	JP5	Pins 2 & 3 closed
Power supply select ATX	JP5	Pins 1 & 2 closed
» Factory configured – do not alter	SW1/6	Unidentified

SIMM CONFIGURATION

Size	Bank 0	Bank 1
8MB	(2) 1M x 36	None
16MB	(2) 2M x 36	None
16MB	(2) 1M x 36	(2) 1M x 36

24MB	(2) 2M x 36	(2) 1M x 36
32MB	(2) 4M x 36	None
32MB	(2) 2M x 36	(2) 2M x 36
40MB	(2) 4M x 36	(2) 1M x 36
48MB	(2) 4M x 36	(2) 2M x 36
64MB	(2) 8M x 36	None
64MB	(2) 4M x 36	(2) 4M x 36
72MB	(2) 8M x 36	(2) 1M x 36
80MB	(2) 8M x 36	(2) 2M x 36
96MB	(2) 8M x 36	(2) 4M x 36

SIMM CONFIGURATION (CON'T)

Size	Bank 0	Bank 1
128MB	(2) 8M x 36	(2) 8M x 36
128MB	(2) 16M x 36	None
136MB	(2) 16M x 36	(2) 1M x 36
144MB	(2) 16M x 36	(2) 2M x 36
160MB	(2) 16M x 36	(2) 4M x 36
192MB	(2) 16M x 36	(2) 8M x 36
256MB	(2) 16M x 36	(2) 16M x 36
Note: Board accepts EDO memory.		

DIMM CONFIGURATION

Size	Bank 2	Bank 3
8MB	(1) 1M x 64	None
16MB	(1) 2M x 64	None

150MHz	60MHz	2x	On	On	Off	On	Off
166MHz	66MHz	2x	On	On	On	On	Off
200MHz	75MHz	2x	On	Off	On	On	Off

CPU SPEED SELECTION (CX 6X86MX)

CPU speed	Clock speed	Multiplier	SW2/1	SW2/2	SW2/3	SW2/4	SW2/5
150MHz	60MHz	2x	On	On	Off	On	Off
166MHz	66MHz	2x	On	On	On	On	Off
166MHz	60MHz	2.5x	On	On	Off	On	On
200MHz	66MHz	2.5x	On	On	On	On	On
200MHz	75MHz	2x	On	Off	On	On	Off

CPU SPEED SELECTION (AM K5)

CPU speed	Clock speed	Multiplier	SW2/1	SW2/2	SW2/3	SW2/4	SW2/5
90MHz	60MHz	1.5x	On	On	Off	Off	Off
100MHz	66MHz	1.5x	On	On	On	Off	Off
120MHz	60MHz	1.5x	On	On	Off	Off	Off
133MHz	66MHz	1.5x	On	On	On	Off	Off
166MHz	66MHz	2.5x	On	On	On	On	On

CPU SPEED SELECTION (AM K6)

CPU speed	Clock speed	Multiplier	SW2/1	SW2/2	SW2/3	SW2/4	SW2/5
166MHz	66MHz	2.5x	On	On	On	On	On
200MHz	66MHz	3x	On	On	On	Off	On
233MHz	66MHz	3.5x	On	On	On	Off	Off

CPU SPEED SELECTION (INTEL)

CPU speed	Clock speed	Multiplier	SW2/1	SW2/2	SW2/3	SW2/4	SW2/5
120MHz	60MHz	2x	On	On	Off	On	Off
133MHz	66MHz	2x	On	On	On	On	Off
150MHz	60MHz	2.5x	On	On	Off	On	On
166MHz	66MHz	2.5x	On	On	On	On	On
180MHz	60MHz	3x	On	On	Off	Off	On
200MHz	66MHz	3x	On	On	On	Off	On

CPU SPEED SELECTION (INTEL MMX)

CPU speed	Clock speed	Multiplier	SW2/1	SW2/2	SW2/3	SW2/4	SW2/5
166MHz	66MHz	2.5x	On	On	On	On	On
200MHz	66MHz	3x	On	On	On	Off	On
233MHz	66MHz	3.5x	On	On	On	Off	Off

CPU VOLTAGE SELECTION

Voltage	SW1/1	SW1/2	SW1/3	SW1/4
2.8v	On	Off	Off	Off
2.9v	On	Off	Off	On
3.3v	On	On	Off	On
3.5v	On	On	On	On