

939CPU Board Specifications

Platform:	7.8-in x 5.5-in (19.8 cm x 14.0 cm)
CPU:	939-Pin Socket Supporting AMD Athlon™ 64FX Processor Supports AMD's Cool 'n' Quiet™ Technology
FSB:	Hyper Transport 1 GHz / 2.0 GT/s
Memory:	4 x DDR DIMM Slots: DDR1, DDR2, DDR3, and DDR4 Support PC3200 (DDR400) / PC2700 (DDR333) / PC2100 (DDR266), Max. 4GB Dual Channel Memory Technology Support

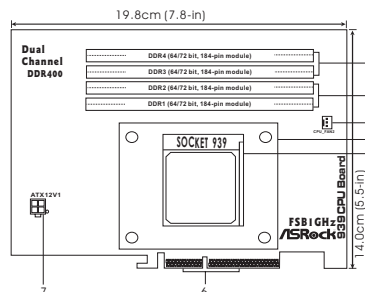
NOTE

939CPU Board provides four 184-pin DDR (Double Data Rate) DIMM slots, and supports Dual Channel Memory Technology. For dual channel configuration, you always need to install **identical** (the same brand, speed, size and chip-type) DDR DIMM pair in the slots of the same color. In other words, you have to install **identical** DDR DIMM pair in **Dual Channel A** (DDR1 and DDR2; Blue slots) or **identical** DDR DIMM pair in **Dual Channel B** (DDR3 and DDR4; Black slots), so that Dual Channel Memory Technology can be activated. It also allows you to install four DDR DIMMs for dual channel configuration, and please install **identical** DDR DIMMs in all four slots. Please note that only the DRAM configuration according to the Allowed DRAM Configurations Table below is workable. **Do not make any DRAM configuration that is not listed on the Allowed DRAM Configurations Table.**

Allowed DRAM Configurations

Data Bus	DIMM Configuration				Max DRAM Speed	
	DDR1 (Blue)	DDR2 (Blue)	DDR3 (Black)	DDR4 (Black)	TT	ZT
64 bit (single channel)	Single Side	N/A	Empty	N/A	DDR400	DDR400
	Double Side	N/A	Empty	N/A	DDR400	DDR400
	Empty	N/A	Single Side	N/A	DDR400	DDR400
	Empty	N/A	Double Side	N/A	DDR400	DDR400
	Single Side	N/A	Single Side	N/A	DDR333	DDR400
	Single Side	N/A	Double Side	N/A	DDR266	DDR400
	Double Side	N/A	Single Side	N/A	DDR266	DDR400
	Double Side	N/A	Double Side	N/A	DDR266	DDR333
	Single Side	Single Side	Empty	Empty	DDR400	DDR400
	Double Side	Double Side	Empty	Empty	DDR400	DDR400
128bit (dual channel)	Empty	Empty	Single Side	Single Side	DDR400	DDR400
	Empty	Empty	Double Side	Double Side	DDR400	DDR400
	Single Side	Single Side	Single Side	Single Side	DDR333	DDR400
	Single Side	Single Side	Double Side	Double Side	DDR266	DDR400
	Double Side	Double Side	Single Side	Single Side	DDR266	DDR400
	Double Side	Double Side	Double Side	Double Side	DDR266	DDR333
	Single Side	Single Side	Empty	Empty	DDR400	DDR400
	Double Side	Double Side	Empty	Empty	DDR400	DDR400
	Single Side	Single Side	Single Side	Single Side	DDR333	DDR400
	Double Side	Double Side	Double Side	Double Side	DDR266	DDR400

939CPU Board Layout



- 2 x 184-pin DDR DIMM Slots (DDR3-4, Dual Channel B, Black Slots)
- 2 x 184-pin DDR DIMM Slots (DDR1-2, Dual Channel A, Blue Slots)
- CPU Fan Connector (CPU_FAN2)
- CPU Heatsink Retention Module
- 939-Pin CPU Socket
- Gold Finger
- ATX 12V Power Connector (ATX12V1)

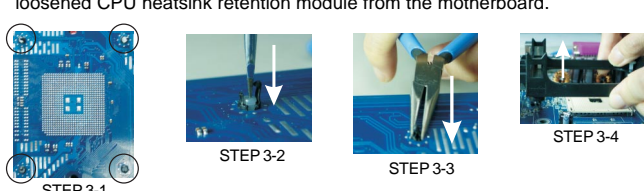
939CPU Board Installation

To install **939CPU Board** into the **Future CPU Port** on ASRock motherboards that support future CPU upgrade function (e.g. **K8Upgrade series motherboards**), please follow the steps below.

- STEP 1:** Install the AMD 939-pin CPU into **939CPU Board**, then install the CPU fan and heatsink into **939CPU Board**, and connect the CPU fan to the CPU fan connector (CPU_FAN2).
- STEP 2:** Install DRAM into **939CPU Board**.
- STEP 3:** If necessary, remove the CPU heatsink retention module from the ASRock motherboard that you are going to install **939CPU Board** into.

NOTE: Whether or not to remove the CPU heatsink retention module from the ASRock motherboard depends on the type of CPU fan installed on 939CPU Board.

- STEP 3-1:** Place the ASRock motherboard with its backside up.
- STEP 3-2:** Use a flathead screwdriver to press down the WHITE fastener of the CPU heatsink retention module through the hole. Repeat with remaining fasteners.
- STEP 3-3:** Use a pair of pliers to clutch the BLACK supporting part of the CPU heatsink retention module, then press it down through the hole. Repeat with remaining supporting parts.
- STEP 3-4:** Place the ASRock motherboard with its backside down, then remove the loosened CPU heatsink retention module from the motherboard.



- STEP 4:** Adjust the jumper settings on ASRock motherboard to fit with the requirement for AMD 939-pin CPU installation. (See ASRock Motherboard User Manual for details).
- STEP 5:** Secure ASRock motherboard to the chassis.
- STEP 6:** Install **939CPU Board** into the **Future CPU Port** on ASRock motherboards that support future CPU upgrade function by aligning the gold finger of **939CPU Board** with the **Future CPU Port**.
- STEP 7:** Secure **939CPU Board** with the bracket to the chassis.
- STEP 8:** Ensure to connect the power supply with ATX 12V plug to the ATX 12V Power Connector (ATX12V1) on **939CPU Board**. Failing to do so will cause power up failure.

English

English

939CPU Board Specifications

Platform:	7.8 吋 x 5.5 吋 (19.8 公分 x 14.0 公分)
CPU:	939-Pin Socket Supporting AMD Athlon™ 64FX Processor Supports AMD's Cool 'n' Quiet™ Technology
FSB:	Hyper Transport 1 GHz / 2.0 GT/s
Memory:	4 x DDR DIMM Slots: DDR1, DDR2, DDR3, and DDR4 Support PC3200 (DDR400) / PC2700 (DDR333) / PC2100 (DDR266), Max. 4GB Dual Channel Memory Technology Support

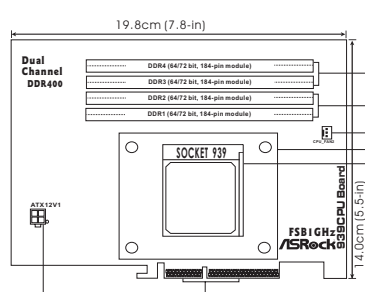
NOTE

939CPU Board provides four 184-pin DDR (Double Data Rate) DIMM slots, and supports Dual Channel Memory Technology. For dual channel configuration, you always need to install **identical** (the same brand, speed, size and chip-type) DDR DIMM pair in the slots of the same color. In other words, you have to install **identical** DDR DIMM pair in **Dual Channel A** (DDR1 and DDR2; Blue slots) or **identical** DDR DIMM pair in **Dual Channel B** (DDR3 and DDR4; Black slots), so that Dual Channel Memory Technology can be activated. It also allows you to install four DDR DIMMs for dual channel configuration, and please install **identical** DDR DIMMs in all four slots. Please note that only the DRAM configuration according to the Allowed DRAM Configurations Table below is workable. **Do not make any DRAM configuration that is not listed on the Allowed DRAM Configurations Table.**

Allowed DRAM Configurations

Data Bus	DIMM Configuration				Max DRAM Speed	
	DDR1 (Blue)	DDR2 (Blue)	DDR3 (Black)	DDR4 (Black)	TT	ZT
64 bit (single channel)	Single Side	N/A	Empty	N/A	DDR400	DDR400
	Double Side	N/A	Empty	N/A	DDR400	DDR400
	Empty	N/A	Single Side	N/A	DDR400	DDR400
	Empty	N/A	Double Side	N/A	DDR400	DDR400
	Single Side	N/A	Single Side	N/A	DDR333	DDR400
	Single Side	N/A	Double Side	N/A	DDR266	DDR400
	Double Side	N/A	Single Side	N/A	DDR266	DDR400
	Double Side	N/A	Double Side	N/A	DDR266	DDR333
	Single Side	Single Side	Empty	Empty	DDR400	DDR400
	Double Side	Double Side	Empty	Empty	DDR400	DDR400
128bit (dual channel)	Empty	Empty	Single Side	Single Side	DDR400	DDR400
	Empty	Empty	Double Side	Double Side	DDR400	DDR400
	Single Side	Single Side	Single Side	Single Side	DDR333	DDR400
	Single Side	Single Side	Double Side	Double Side	DDR266	DDR400
	Double Side	Double Side	Single Side	Single Side	DDR266	DDR400
	Double Side	Double Side	Double Side	Double Side	DDR266	DDR333
	Single Side	Single Side	Empty	Empty	DDR400	DDR400
	Double Side	Double Side	Empty	Empty	DDR400	DDR400
	Single Side	Single Side	Single Side	Single Side	DDR333	DDR400
	Double Side	Double Side	Double Side	Double Side	DDR266	DDR400

939CPU Board Layout



- 2 x 184-pin DDR DIMM Slots (DDR3-4, Dual Channel B, Black Slots)
- 2 x 184-pin DDR DIMM Slots (DDR1-2, Dual Channel A, Blue Slots)
- CPU Fan Connector (CPU_FAN2)
- CPU Heatsink Retention Module
- 939-Pin CPU Socket
- Gold Finger
- ATX 12V Power Connector (ATX12V1)

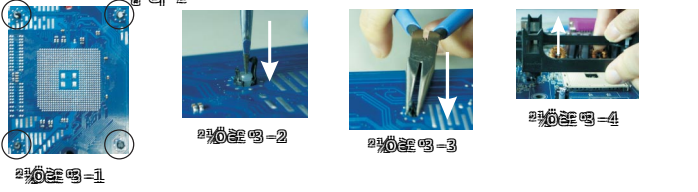
939CPU Board Installation

To install **939CPU Board** into the **Future CPU Port** on ASRock motherboards that support future CPU upgrade function (e.g. **K8Upgrade series motherboards**), please follow the steps below.

- STEP 1:** Install the AMD 939-pin CPU into **939CPU Board**, then install the CPU fan and heatsink into **939CPU Board**, and connect the CPU fan to the CPU fan connector (CPU_FAN2).
- STEP 2:** Install DRAM into **939CPU Board**.
- STEP 3:** If necessary, remove the CPU heatsink retention module from the ASRock motherboard that you are going to install **939CPU Board** into.

NOTE: Whether or not to remove the CPU heatsink retention module from the ASRock motherboard depends on the type of CPU fan installed on 939CPU Board.

- STEP 3-1:** Place the ASRock motherboard with its backside up.
- STEP 3-2:** Use a flathead screwdriver to press down the WHITE fastener of the CPU heatsink retention module through the hole. Repeat with remaining fasteners.
- STEP 3-3:** Use a pair of pliers to clutch the BLACK supporting part of the CPU heatsink retention module, then press it down through the hole. Repeat with remaining supporting parts.
- STEP 3-4:** Place the ASRock motherboard with its backside down, then remove the loosened CPU heatsink retention module from the motherboard.



- STEP 4:** Adjust the jumper settings on ASRock motherboard to fit with the requirement for AMD 939-pin CPU installation. (See ASRock Motherboard User Manual for details).
- STEP 5:** Secure ASRock motherboard to the chassis.
- STEP 6:** Install **939CPU Board** into the **Future CPU Port** on ASRock motherboards that support future CPU upgrade function by aligning the gold finger of **939CPU Board** with the **Future CPU Port**.
- STEP 7:** Secure **939CPU Board** with the bracket to the chassis.
- STEP 8:** Ensure to connect the power supply with ATX 12V plug to the ATX 12V Power Connector (ATX12V1) on **939CPU Board**. Failing to do so will cause power up failure.

English

English

939CPU Board Spezifikationen

Platform:	7,8 Zoll x 5,5 Zoll (19,8 cm x 14,0 cm)
CPU:	939-pol. Socket, unterstützt AMD Athlon™ 64FX-Prozessoren Unterstützt die AMD Cool 'n' Quiet™-Technologie
FSB:	Hyper Transport 1 GHz / 2,0 GT/s
Arbeitsspeicher:	4 x DDR DIMM-Steckplätze: DDR1, DDR2, DDR3 und DDR4 Unterstützt PC3200 (DDR400) / PC2700 (DDR333) / PC2100 (DDR266), Max. 4GB Unterstützt die Dual Channel Memory-Technologie

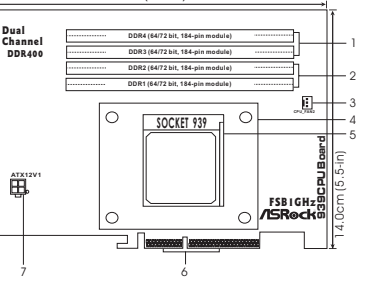
HINWEIS

Das **939CPU Board** bietet vier 184-pol. DDR (Double Data Rate) DIMM-Steckplätze und unterstützt die Dual Channel Memory-Technologie. Für eine Dualkanal-Konfiguration müssen Sie ein identisches (die selbe Marke, selbe Geschwindigkeit, selbe Größe und den selben Chip-Typ) Paar von DDR DIMM-Modulen in die Steckplätze mit der selben Farbe stecken. In anderen Worten müssen Sie ein identisches Paar von DDR DIMM-Modulen in den Dualkanal A (DDR1 und DDR2; blaue Steckplätze) oder identisches Paar von DDR DIMM-Modulen in den Dualkanal B (DDR3 und DDR4; schwarze Steckplätze) installieren, um die Dual Channel Memory-Technologie zu aktivieren. Sie können auch vier DDR DIMMs für eine Dualkanal-Konfiguration installieren. In diesem Fall installieren Sie bitte identische DDR DIMMs in allen vier Steckplätzen. Bitte denken Sie daran, dass nur eine in der folgenden Tabelle mit zulässigen DRAM-Konfigurationen aufgeführte DRAM-Konfiguration funktionieren kann. Nehmen Sie keine DRAM-Konfiguration vor, die nicht in der Tabelle mit zulässigen DRAM-Konfigurationen aufgeführt ist.

Zulässige DRAM-Konfigurationen

Datenbus	DIMM-Konfiguration				Max. DRAM-Geschwindigkeit	
	DDR1 (blau)	DDR2 (blau)	DDR3 (schwarz)	DDR4 (schwarz)	TT	ZT
64 Bit (Einkanal)	Einseitig	N/A	Leer	N/A	DDR400	DDR400
	Zweiseitig	N/A	Leer	N/A	DDR400	DDR400
	Leer	N/A	Einseitig	N/A	DDR400	DDR400
	Leer	N/A	Zweiseitig	N/A	DDR400	DDR400
	Einseitig	N/A	Einseitig	N/A	DDR333	DDR400
	Einseitig	N/A	Zweiseitig	N/A	DDR266	DDR400
	Zweiseitig	N/A	Einseitig	N/A	DDR266	DDR400
	Zweiseitig	N/A	Zweiseitig	N/A	DDR400	DDR333
	Einseitig	Einseitig	Leer	Leer	DDR400	DDR400
	Deux faces	N/A	Deux faces	Deux faces	Deux faces	DDR400
128Bit (Dualkanal)	Einseitig	Einseitig	Leer	Leer	DDR400	DDR400
	Zweiseitig	Zweiseitig	Leer	Leer	DDR400	DDR400
	Leer	Leer	Einseitig	Einseitig	DDR400	DDR400
	Leer	Leer	Zweiseitig	Zweiseitig	DDR400	DDR400
	Einseitig	Einseitig	Einseitig	Einseitig	DDR333	DDR400
	Einseitig	Einseitig	Zweiseitig	Zweiseitig	DDR266	DDR400
	Zweiseitig	Zweiseitig	Einseitig	Einseitig	DDR266	DDR400
	Zweiseitig	Zweiseitig	Zweiseitig	Zweiseitig	DDR266	DDR333
	Einseitig	Einseitig	Empty	Empty	DDR400	DDR400
	Deux faces	N/A	Deux faces	Deux faces	Deux faces	DDR400

939CPU Board-Layout



- 2 x 184-pol. DDR DIMM-Steckplätze (DDR3-4, Dualkanal B, schwarze Steckplätze)
- 2 x 184-pol. DDR DIMM-Steckplätze (DDR1-2, Dualkanal A, blaue Steckplätze)
- CPU-Lüfteranschluss (CPU_FAN2)
- CPU-Kühlkörperhalterungsmodul
- 939-pol. CPU-Socket
- Goldfinger
- ATX 12V Stromanschluss (ATX12V1)

939CPU Board-Installation

Um das **939CPU Board** in den **Future CPU Port** an ASRock Motherboards, die die künftige CPU-Aufrüstfunktion unterstützen (z.B. **K8Upgrade-Serie Motherboards**), zu installieren, befolgen Sie bitte die nachstehenden Schritte.

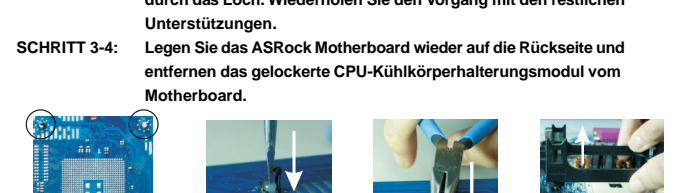
- SCHRITT 1:** Installieren Sie die AMD 939-pol. CPU auf dem **939CPU Board** und dann den CPU-Lüfter auf dem **939CPU Board**. Verbinden Sie den CPU-Lüfter mit dem CPU-Lüfteranschluss (CPU_FAN2).
- SCHRITT 2:** Installieren Sie das DRAM auf dem **939CPU Board**.
- SCHRITT 3:** Entfernen Sie, wenn nötig, das CPU-Kühlkörperhalterungsmodul von dem ASRock-Motherboard, auf dem Sie das **939CPU Board** installieren möchten.

HINWEIS: Es hängt von dem Typ des auf dem **939CPU Board** installierten CPU-Lüfers ab, ob Sie das CPU-Kühlkörperhalterungsmodul von dem ASRock-Motherboard zu entfernen brauchen.

- SCHRITT 3-1:** Drehen Sie das ASRock Motherboard um.
- SCHRITT 3-2:** Verwenden Sie einen Schlitzschraubenzieher, um die WEISSE Befestigungsvorrichtung des CPU-Kühlkörperhalterungsmoduls nach unten durch das Loch zu drücken. Wiederholen Sie den Vorgang mit den restlichen Befestigungsvorrichtungen.

- SCHRITT 3-3:** Verwenden Sie eine Zange, um die SCHWARZE Unterstützung des CPU-Kühlkörperhalterungsmoduls zu packen und drücken sie nach unten durch das Loch. Wiederholen Sie den Vorgang mit den restlichen Unterstützungen.

- SCHRITT 3-4:** Legen Sie das ASRock Motherboard wieder auf die Rückseite und entfernen das gelockerte CPU-Kühlkörperhalterungsmodul vom Motherboard.



- SCHRITT 4:** Ändern Sie die Jumper-Einstellungen am ASRock Motherboard entsprechend der Anforderung für die AMD 939-pol. CPU-Installation. (Siehe Sie im Benutzerhandbuch des ASRock Motherboards für Details nach).
- SCHRITT 5:** Befestigen Sie das ASRock Motherboards auf dem Computergehäuse.
- SCHRITT 6:** Installieren Sie das **939CPU Board** in den **Future CPU Port** an ASRock Motherboards, die die künftige CPU-Aufrüstfunktion unterstützen. Richten Sie dabei den Goldfinger des **939CPU Board** auf den **Future CPU Port** aus.
- SCHRITT 7:** Befestigen Sie das Trägerblech des **939CPU Boards** an dem Computergehäuse.
- SCHRITT 8:** Vergessen Sie nicht den ATX 12V Stromkabel-Stecker in den ATX 12V Stromanschluss (ATX12V1) am **939CPU Board** einzustecken. Ansonsten kann der Computer nicht gestartet werden.

Deutsch

Deutsch

Spécifications de la carte 939CPU

Plate-forme :	7,8 pouces x 5,5 pouces (19,8 cm x 14,0 cm)
Processeur :	Socket 939 broches prenant en charge le processeur AMD Athlon™ 64FX Prise en charge de la technologie Cool 'n' Quiet™ d'AMD
FSB :	Hyper Transport 1 GHz / 2,0 GT/s
Mémoire :	4 emplacements x DDR DIMM : DDR1, DDR2, DDR3 et DDR4 Prend en charge PC3200 (DDR400) / PC2700 (DDR333) / PC2100 (DDR266) Maxi. 4 Go Prise en charge de la technologie mémoire double canal

REMARQUE

La carte **939CPU** propose quatre emplacements DDR (Double Débit de données) DIMM 184 broches et prend en charge la technologie Mémoire double canal. Pour la configuration double canal, vous devez toujours installer une paire de modules DDR DIMM identiques (mêmes marque, vitesse, dimensions et type de puce) dans les emplacements de même couleur. En d'autres termes, vous devez installer une paire de modules DDR DIMM identiques dans Double canal A (DDR1 et DDR2 ; emplacements bleus) ou une paire de modules DDR DIMM identiques dans Double canal B (DDR3 et DDR4 ; emplacements noirs), pour que la technologie Mémoire double canal puisse être activée. La carte vous permet également d'installer quatre modules DDR DIMM pour la configuration double canal, et d'installer des modules DDR DIMM identiques dans les quatre emplacements. Veuillez noter que seules les configurations de DRAM qui respectent le Tableau des configurations DRAM permises ci-dessous sont possibles. Ne créez pas de configuration DRAM autre que celles mentionnées dans le Tableau des configurations DRAM permises.

Configurations DRAM permises

Bus de données	Configuration DIMM				Vitesse DRAM maxi	
	DDR1 (Bleu)	DDR2 (Bleu)	DDR3 (Noir)	DDR4 (Noir)	TT	ZT
64 bits (canal unique)	Une face	N/A	Vide	N/A	DDR400	DDR400
	Deux faces	N/A	Vide	N/A	DDR400	DDR400
	Vide	N/A	Une face	N/A	DDR400	DDR400
	Vide	N/A	Deux faces	N/A	DDR400	DDR400
	Une face	N/A	Une face	N/A	DDR333	DDR400
	Une face	N/A	Deux faces	N/A	DDR266	DDR400
	Deux faces	N/A	Une face	N/A	DDR266	DDR400
	Deux faces	N/A	Deux faces	N/A	DDR266	DDR333
	Une face	Une face	Vide	Vide	DDR400	DDR400
	Deux faces	Deux faces	Vide	Vide	DDR400	DDR400
128 bits (double canal)	Vide	Vide	Une face	Une face	DDR400	DDR400
	Vide	Vide	Deux faces	Deux faces	DDR400	DDR400
	Une face	Une face	Une face	Une face	DDR333	DDR400
	Une face	Une face	Deux faces	Deux faces	DDR266	DDR400
	Deux faces	Deux faces	Une face	Une face	DDR266	DDR400
	Deux faces	Deux faces	Deux faces	Deux faces	DDR266	DDR333
	Une face	Une face	Empty	Empty	DDR400	DDR400
	Deux faces	Deux faces	Empty	Empty	DDR400	DDR400
	Une face	Une face	Single Side	Single Side	DDR333	DDR400
	Deux faces	Deux faces	Double Side	Double Side	DDR266	DDR400

Disposition de la carte 93

Specifiche scheda 939CPU

Piattaforma: 7,8 pollici x 5,5 pollici (19,8 cm x 14,0 cm)

CPU: Presa 939 pin che supporta processore AMD Athlon™ 64FX
Supporto tecnologia AMD "Cool 'n' Quiet"™

FSB: Tecnologia Hyper Transport 1 GHz / 2.0 GT/s

Memoria: 4 alloggiamenti DIMM DDR: DDR1, DDR2, DDR3, e DDR4
Supporto PC3200 (DDR400) / PC2700 (DDR333) / PC2100 (DDR266), 4GB al massimo

Supporto tecnologia Dual Channel Memory

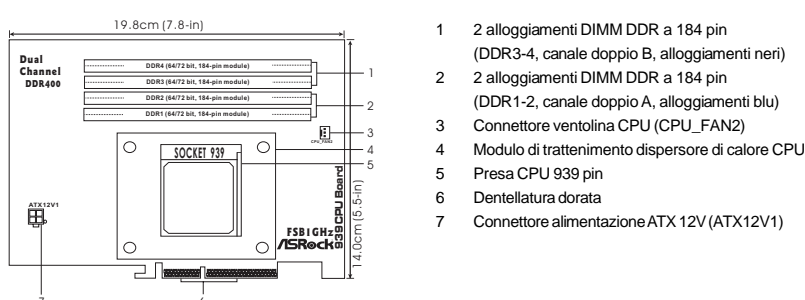
NOTA

La scheda 939CPU fornisce quattro alloggiamenti DIMM DDR (Double Data Rate) a 184 pin, e supporta la tecnologia Dual Channel Memory. Per la configurazione a due canali, è necessario installare sempre coppie identiche (stessa marca, velocità, dimensioni e tipo di chip) di DIMM DDR negli alloggiamenti dello stesso colore. In altre parole, è necessario installare coppie identiche di DIMM DDR nel canale doppio A (DDR1 e DDR2; alloggiamenti blu) oppure coppie identiche di DIMM DDR nel canale doppio B (DDR3 e DDR4; alloggiamenti neri), per fare sì che la tecnologia Dual Channel Memory possa essere attivata. Questa scheda madre consente anche di installare quattro DIMM DDR per la configurazione a canale doppio, installare DIMM DDR identici in tutti quattro gli alloggiamenti. Si prega di notare che può funzionare solamente la configurazione DRAM che si basa sulla seguente tavola Configurazioni DRAM consentite. Non eseguire alcuna configurazione DRAM diversa da quelle elencate nella tavola Configurazioni DRAM consentite.

Configurazioni DRAM consentite

Bus dati	Configurazione DIMM				Velocità massima DRAM	
	DDR1 (Blu)	DDR2 (Blu)	DDR3 (Nero)	DDR4 (Nero)	1T	2T
64 bit (canale singolo)	Lato singolo	N/A	Vuoto	N/A	DDR400	DDR400
	Lato doppio	N/A	Vuoto	N/A	DDR400	DDR400
	Vuoto	N/A	Lato singolo	N/A	DDR400	DDR400
	Vuoto	N/A	Lato doppio	N/A	DDR400	DDR400
	Lato singolo	N/A	Lato singolo	N/A	DDR333	DDR400
	Lato singolo	N/A	Lato doppio	N/A	DDR266	DDR400
128 bit (canale doppio)	Lato doppio	N/A	Lato singolo	N/A	DDR400	DDR333
	Lato singolo	Lato singolo	Vuoto	Vuoto	DDR400	DDR400
	Lato doppio	Lato doppio	Vuoto	Vuoto	DDR400	DDR400
	Vuoto	Vuoto	Lato singolo	Lato singolo	DDR400	DDR400
	Vuoto	Vuoto	Lato doppio	Lato doppio	DDR400	DDR400
	Lato singolo	Lato singolo	Lato doppio	Lato doppio	DDR333	DDR400
	Lato singolo	Lato singolo	Lato doppio	Lato doppio	DDR266	DDR400
	Lato doppio	Lato doppio	Lato singolo	Lato singolo	DDR266	DDR400
	Lato doppio	Lato doppio	Lato doppio	Lato doppio	DDR266	DDR333

Disposizione scheda 939CPU



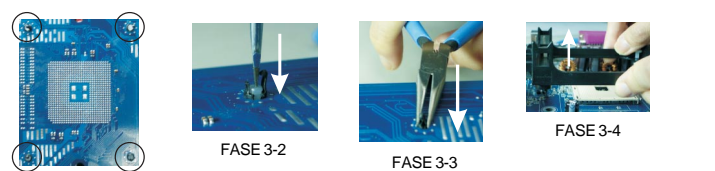
Installazione scheda 939CPU

Per installare la scheda 939CPU nella porta CPU Future sulle schede madre ASRock che supportano la funzione d'aggiornamento CPU Future (e.g. schede madre serie K8Upgrade), attenersi alla seguenti fasi.

- FASE 1:** Installare la CPU AMD a 939 pin sulla scheda 939CPU, poi installare ventolina e dispersore di calore CPU sulla scheda 939CPU, e collegare la ventolina CPU al connettore ventolina CPU (CPU_FAN2).
FASE 2: Installare la DRAM sulla scheda 939CPU.
FASE 3: Se necessario rimuovere il modulo di trattamento dispersore di calore CPU dalla scheda madre ASRock sulla quale si installerà la scheda 939CPU.

NOTA: la rimozione del modulo di trattamento dispersore di calore CPU dalla scheda madre ASRock dipende dal tipo di ventolina CPU installato sulla scheda 939CPU.

- FASE 3-1:** Collocare la scheda ASRock con la parte posteriore rivolta verso l'alto.
FASE 3-2: Utilizzare un cacciavite per premere verso il basso, attraverso il foro, il fermo BIANCO del modulo di trattamento dispersore di calore CPU. Ripetere con gli altri fermi.
FASE 3-3: Utilizzare una pinza per afferrare la parte di supporto di colore NERO del modulo di trattamento dispersore di calore CPU e premere verso il basso, attraverso il foro. Ripetere con le altre parti di supporto.
FASE 3-4: Collocare la scheda madre ASRock con la parte posteriore rivolta verso il basso, poi rimuovere dalla scheda madre il modulo di trattamento dispersore di calore CPU allentato.



- FASE 4:** Regolare le impostazioni dei jumper sulla scheda madre ASRock per adattarle ai requisiti dell'installazione CPU AMD a 939 pin. (Fare riferimento al Manuale utente della scheda madre ASRock per i dettagli)
FASE 5: Fissare la scheda madre ASRock al telaio.
FASE 6: Installare la scheda 939CPU nella porta CPU Future sulle schede madre ASRock che supportano la funzione d'aggiornamento CPU allineando la dentellatura dorata della scheda 939CPU con la porta CPU Future.
FASE 7: Fissare la scheda 939CPU con la staffa al telaio.
FASE 8: Assicurarsi di collegare l'alimentatore con la presa ATX 12V al connettore d'alimentazione ATX 12V (ATX12V1) sulla scheda 939CPU. Diversamente si provocherà la mancata alimentazione.

Especificaciones de la placa 939CPU

Plataforma: 19,8 cm x 14,0 cm (7,8 x 5,5 pulgadas)

CPU: Socket de 939 agujas con soporte para procesador AMD Athlon 64FX
Compatible con la tecnología Cool 'n' Quiet de AMD

FSB: Hyper Transport 1 GHz / 2.0 GT/s

Memory: 4 ranuras DIMM DDR: DDR1, DDR2, DDR3 y DDR4
Compatible con PC3200 (DDR400) / PC2700 (DDR333) / PC2100 (DDR266), Máx. 4 GB

Compatible con la tecnología de memoria de doble canal

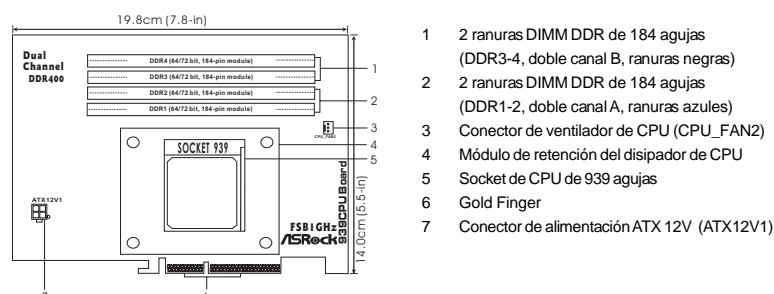
NOTA

La placa 939CPU proporciona cuatro ranuras DIMM DDR (Double Data Rate) de 184 agujas y es compatible con la tecnología de memoria de doble canal. Para configurar el doble canal, necesitará instalar pares DIMM DDR idénticos (de la misma marca, velocidad, tamaño y tipo de chip) en las ranuras del mismo color. En otras palabras, deberá instalar pares DIMM DDR idénticos en el doble canal A (DDR1 y DDR2; ranuras azules) o pares DIMM DDR idénticos en el doble canal B (DDR3 y DDR4; ranuras negras), para poder activar la tecnología de memoria de doble canal. También se pueden instalar cuatro DIMM DDR para configuración de doble canal pero deberán ser DIMM DDR idénticos en las cuatro ranuras. Tenga en cuenta que sólo funcionarán las configuraciones DRAM de la tabla de configuraciones DRAM permitidas. No establezca ninguna configuración DRAM que no aparezca en dicha tabla.

Configuraciones DRAM permitidas

Bus de datos	Configuración DIMM				Máx. velocidad DRAM	
	DDR1 (azul)	DDR2 (azul)	DDR3 (negra)	DDR4 (negra)	1T	2T
64 bits (canal único)	Sólo una cara	N/A	Vacía	N/A	DDR400	DDR400
	Doble cara	N/A	Vacía	N/A	DDR400	DDR400
	Vacía	N/A	Sólo una cara	N/A	DDR400	DDR400
	Vacía	N/A	Doble cara	N/A	DDR400	DDR400
	Sólo una cara	N/A	Sólo una cara	N/A	DDR333	DDR400
	Sólo una cara	N/A	Doble cara	N/A	DDR266	DDR400
128 bits (canal doble)	Doble cara	N/A	Sólo una cara	N/A	DDR266	DDR333
	Sólo una cara	Sólo una cara	Vacía	Vacía	DDR400	DDR400
	Doble cara	Doble cara	Vacía	Vacía	DDR400	DDR400
	Vacía	Vacía	Sólo una cara	Sólo una cara	DDR400	DDR400
	Vacía	Vacía	Doble cara	Doble cara	DDR400	DDR400
	Sólo una cara	Sólo una cara	Sólo una cara	Sólo una cara	DDR333	DDR400
	Sólo una cara	Sólo una cara	Doble cara	Doble cara	DDR266	DDR400
	Doble cara	Doble cara	Sólo una cara	Sólo una cara	DDR266	DDR400
	Doble cara	Doble cara	Doble cara	Doble cara	DDR266	DDR333

Presentación de la placa 939CPU



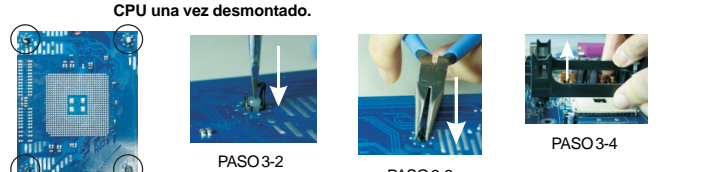
Instalación de la placa 939CPU

Para instalar la placa 939CPU en el puerto de CPU Future de las placas madres ASRock compatibles con la función de actualización a CPU Future (por ej. las placas madre de la serie K8Upgrade), siga los pasos siguientes.

- PASO 1:** Instale la CPU AMD de 939 agujas en la placa 939CPU y, a continuación, instale el ventilador y el disipador de CPU en la placa 939CPU y conecte el ventilador de CPU al conector de ventilador de CPU (CPU_FAN2).
PASO 2: Instale la DRAM en la placa 939CPU.
PASO 3: Si es necesario, retire el módulo de retención del disipador de CPU de la placa madre ASRock en la que vaya a instalar la placa 939CPU.

NOTA: La decisión de retirar o no el módulo de retención de disipador de CPU de la placa madre ASRock dependerá del tipo de ventilador de CPU instalado en la placa 939CPU.

- PASO 3-1:** Coloque la placa madre ASRock con la parte posterior hacia arriba.
PASO 3-2: Utilice un destornillador plano para presionar el cierre BLANCO en el disipador del módulo de retención de CPU a través del agujero. Repita este paso con los demás cierres.
PASO 3-3: Utilice unos alicates para agarrar la pieza de soporte NEGRA del módulo de retención del disipador de CPU, a continuación aprételo a través del agujero. Repita este paso con las demás piezas.
PASO 3-4: Coloque la placa madre ASRock con la parte posterior hacia abajo, a continuación retire de la placa madre el módulo de retención del disipador de CPU una vez desmontado.



- PASO 4:** Ajuste la configuración del jumper en la placa madre ASRock para que cumpla los requisitos de instalación de la CPU AMD de 939 agujas. (Consulte el Manual del usuario de la placa madre ASRock para obtener más detalles).
PASO 5: Fije la placa madre ASRock en el chasis.
PASO 6: Instale la placa 939CPU en el puerto de CPU Future de placas madre ASRock compatibles con la función de actualización a CPU Future alineando el gold finger de la placa 939CPU con el puerto de CPU Future.
PASO 7: Fije la placa 939CPU en el chasis con el soporte.
PASO 8: Asegúrese de conectar a una toma de corriente el enchufe ATX 12V con el conector de alimentación ATX 12V (ATX12V1) de la placa 939CPU. Si no lo hace, no tendrá alimentación eléctrica.

Especificações da Placa 939CPU

Plataforma: 19,8 x 14,0 cm (7,8 x 5,5 pol.)

CPU: Soquete de 939 pinos compatível com processador AMD Athlon™ 64FX
Suporta a tecnologia AMD Cool 'n' Quiet™

FSB: Hiperttransporte 1 GHz / 2.0 GT/s

Memória: Quatro slots DIMM DDR: DDR1, DDR2, DDR3 e DDR4
Suporte a PC3200 (DDR400) / PC2700 (DDR333) / PC2100 (DDR266), máximo de 4 GB

Suporte à tecnologia de memória de duplo canal

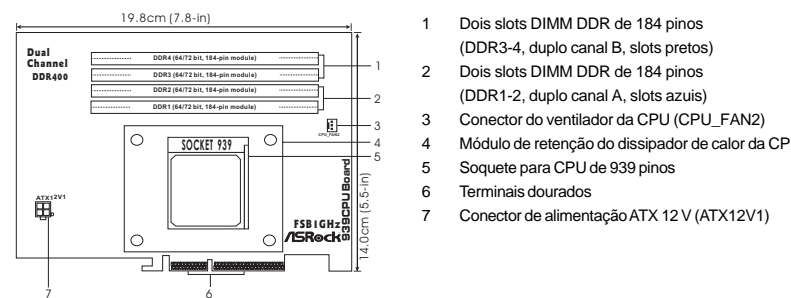
NOTA

A Placa 939CPU possui quatro slots DIMM DDR (taxa de dados dupla) de 184 pinos e suporta a tecnologia de memória de duplo canal. Para a configuração de duplo canal, instale sempre um par idêntico de DIMM DDR (mesma marca, tipo, tamanho e tipo de chip) nos slots de mesma cor. Ou seja, é preciso instalar um par idêntico de DIMM DDR no duplo canal A (DDR1 e DDR3; slots azuis) ou um par idêntico de DIMM DDR no duplo canal B (DDR2 e DDR4; slots pretos), para que a tecnologia de memória de duplo canal possa ser ativada. Esta placa também permite instalar quatro módulos DIMM DDR para a configuração de duplo canal e, instale módulos DIMM DDR idênticos nos quatro slots. Observe que só funcionarão as combinações apresentadas na "Tabela de Configurações Permitidas de DRAM", abaixo. Não faça qualquer configuração de DRAM que não esteja listada na "Tabela de Configurações Permitidas de DRAM".

Tabela de Configurações Permitidas de DRAM

Barramento de dados	Configuração DIMM				Velocidade máxima DRAM	
	DDR1 (Azul)	DDR2 (Azul)	DDR3 (Preto)	DDR4 (Preto)	1T	2T
64 bits (canal simples)	Face simples	N/A	Vazio	N/A	DDR400	DDR400
	Dupla face	N/A	Vazio	N/A	DDR400	DDR400
	Vazio	N/A	Face simples	N/A	DDR400	DDR400
	Vazio	N/A	Dupla face	N/A	DDR400	DDR400
	Face simples	N/A	Face simples	N/A	DDR333	DDR400
	Face simples	N/A	Dupla face	N/A	DDR266	DDR400
128 bits (duplo canal)	Dupla face	N/A	Dupla face	N/A	DDR400	DDR333
	Face simples	Face simples	Vazio	Vazio	DDR400	DDR400
	Dupla face	Dupla face	Vazio	Vazio	DDR400	DDR400
	Vazio	Vazio	Face simples	Face simples	DDR400	DDR400
	Vazio	Vazio	Dupla face	Dupla face	DDR400	DDR400
	Face simples	Face simples	Face simples	Face simples	DDR333	DDR400
	Face simples	Face simples	Dupla face	Dupla face	DDR266	DDR400
	Dupla face	Dupla face	Face simples	Face simples	DDR266	DDR400
	Dupla face	Dupla face	Dupla face	Dupla face	DDR266	DDR333

Layout da Placa 939CPU



Instalação da Placa 939CPU

Para instalar a Placa 939CPU na Porta para CPU Futura nas placas-mãe ASRock que suportam a função de atualização para CPU futura (por exemplo, as placas-mãe da série K8Upgrade), siga os passos abaixo.

- PASSO 1:** Instale a CPU AMD de 939 pinos na Placa 939CPU, instale o ventilador e o dissipador de calor da CPU na Placa 939CPU e ligue o ventilador da CPU ao conector correspondente (CPU_FAN2).
PASSO 2: Instale a DRAM na Placa 939CPU.
PASSO 3: Se for necessário, remova o módulo de retenção do dissipador de calor da CPU da placa-mãe ASRock que receberá a Placa 939CPU.

NOTA: A necessidade de remover o módulo de retenção do dissipador de calor da CPU da placa-mãe ASRock depende do tipo de ventilador de CPU instalado na Placa 939CPU.

- PASSO 3-1:** Coloque a placa-mãe ASRock com a parte traseira voltada para cima.
PASSO 3-2: Use uma chave de fenda para pressionar, através do furo, o fixador BRANCO do módulo de retenção do dissipador de calor da CPU. Repita este processo com os demais fixadores.
PASSO 3-3: Use um alicate apropriado para fechar o suporte PRETO do módulo de retenção do dissipador de calor da CPU e pressione-o através do furo. Repita este processo com os demais suportes.
PASSO 3-4: Coloque a placa-mãe ASRock com a parte traseira voltada para baixo e remova o módulo de retenção do dissipador de calor da CPU já solto.



- PASSO 4:** Ajuste as configurações de jumper na placa-mãe ASRock para atender aos requisitos de instalação da CPU AMD de AMD 939 pinos. (Consulte os detalhes no Manual do Usuário da Placa-mãe ASRock).
PASSO 5: Fixe a placa-mãe ASRock no gabinete.
PASSO 6: Instale a Placa 939CPU na Porta para CPU Futura na placa-mãe ASRock compatível com a função de atualização para CPU futura, alinhando os terminais dourados da Placa 939CPU com a Porta para CPU Futura.
PASSO 7: Fixe a Placa 939CPU com o suporte ao gabinete.
PASSO 8: Certifique-se de ligar a fonte de alimentação com conector ATX 12V ao conector correspondente (ATX12V1) na Placa 939CPU. Do contrário, haverá falhas de funcionamento.

939CPU 0.1

Çiçâ 7.8x5.5 (19.8cm x 14.0cm)

ÇPÜ: 939 pinli çipni destekleyen AMD Athlon™ 64FX çipni destekleyen

FSB: 1 GHz / 2.0 GT/s Hypertransport teknolojisi

Memória: 4 DDR DIMM slotu: DDR1, DDR2, DDR3 ve DDR4
PC3200 (DDR400) / PC2700 (DDR333) / PC2100 (DDR266), maksimum 4GB destekler

Çift kanal bellek teknolojisi destekler

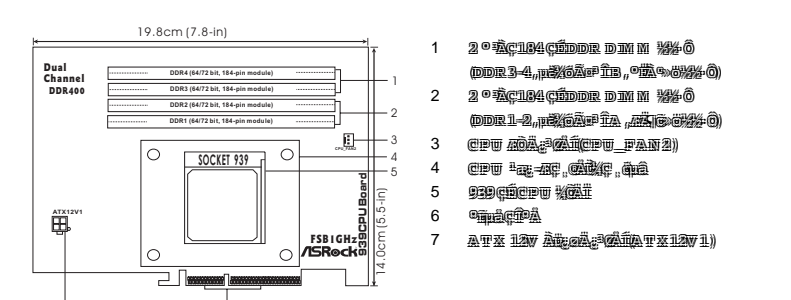
NOTA

939CPU 0.1 dört adet 184 pinli DDR DIMM (Double Data Rate) slotu sunar ve çift kanal bellek teknolojisi destekler. Çift kanal bellek teknolojisi için aynı marka, hız, boyut ve çip türü olan DIMM'leri aynı renkteki slotlara eşleştirmeniz gerekir. Başka bir deyişle, çift kanal bellek teknolojisi için aynı marka ve hızta DDR1 ve DDR2 bellekleri (mavi slotlar) veya aynı marka ve hızta DDR3 ve DDR4 bellekleri (siyah slotlar) kullanmanız gerekir. Ayrıca, bellek teknolojisi çift kanal bellek için dört adet DDR DIMM'leri de destekler ancak tüm dört slotta aynı marka ve hızta DIMM'leri kullanmanız gerekir. Lütfen aşağıdaki "İzin verilen DRAM Konfigurasyonları" tablosuna bakın. İzin verilen DRAM konfigürasyonları dışında herhangi bir DRAM konfigürasyonu kullanmamalıdır.

İzin verilen DRAM Konfigurasyonları

Veri Busu	DIMM Konfigurasyonu				Maksimum DRAM Hızı	
	DDR1 (Mavi)	DDR2 (Mavi)	DDR3 (Siyah)	DDR4 (Siyah)	1T	2T
64 bit (tek kanal)	Yalnızca bir yüz	N/A	Boş	N/A	DDR400	DDR400
	İki yüz	N/A	Boş	N/A	DDR400	DDR400
	Boş	N/A	Yalnızca bir yüz	N/A	DDR400	DDR400
	Boş	N/A	İki yüz	N/A	DDR400	DDR400
	Yalnızca bir yüz	N/A	Yalnızca bir yüz	N/A	DDR333	DDR400
	Yalnızca bir yüz	N/A	İki yüz	N/A	DDR266	DDR400
128 bit (çift kanal)	İki yüz	N/A	Yalnızca bir yüz	N/A	DDR266	DDR333
	Yalnızca bir yüz	Yalnızca bir yüz	Boş	Boş	DDR400	DDR400
	İki yüz	İki yüz	Boş	Boş	DDR400	DDR400
	Boş	Boş	Yalnızca bir yüz	Yalnızca bir yüz	DDR400	DDR400
	Boş	Boş	İki yüz	İki yüz	DDR400	DDR400
	Yalnızca bir yüz	Yalnızca bir yüz	Yalnızca bir yüz	Yalnızca bir yüz	DDR333	DDR400
	Yalnızca bir yüz	Yalnızca bir yüz	İki yüz	İki yüz	DDR266	DDR400
	İki yüz	İki yüz	Yalnızca bir yüz	Yalnızca bir yüz	DDR266	DDR400
	İki yüz	İki yüz	İki yüz	İki yüz	DDR266	DDR333

939CPU 0.1



939CPU 0.1'i kurmak için CPU Future destekleyen ASRock anakartları (örneğin K8Upgrade serisi) kullanmanız gerekir.

ÖNEMLİ: 939CPU 0.1'i kurmak için CPU Future destekleyen ASRock anakartları (örneğin K8Upgrade serisi) kullanmanız gerekir.

ÖNEMLİ: 939CPU 0.1'i kurmak için CPU Future destekleyen ASRock anakartları (örneğin K8Upgrade serisi) kullanmanız gerekir.

ÖNEMLİ: 939CPU 0.1'i kurmak için CPU Future destekleyen ASRock anakartları (örneğin K8Upgrade serisi) kullanmanız gerekir.

ÖNEMLİ: 939CPU 0.1'i kurmak için CPU Future destekleyen ASRock anakartları (örneğin K8Upgrade serisi) kullanmanız gerekir.

ÖNEMLİ: 939CPU 0.1'i kurmak için CPU Future destekleyen ASRock anakartları (örneğin K8Upgrade serisi) kullanmanız gerekir.

ÖNEMLİ: 939CPU 0.1'i kurmak için CPU Future destekleyen ASRock anakartları (örneğin K8Upgrade serisi) kullanmanız gerekir.

ÖNEMLİ: 939CPU 0.1'i kurmak için CPU Future destekleyen ASRock anakartları (örneğin K8Upgrade serisi) kullanmanız gerekir.

ÖNEMLİ: 939CPU 0.1'i kurmak için CPU Future destekleyen ASRock anakartları (örneğin K8Upgrade serisi) kullanmanız gerekir.

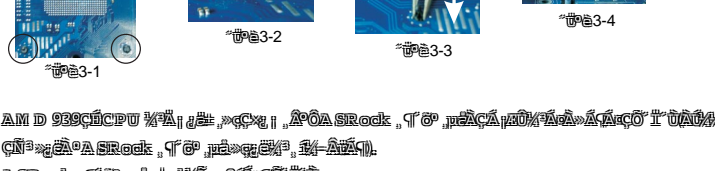
ÖNEMLİ: 939CPU 0.1'i kurmak için CPU Future destekleyen ASRock anakartları (örneğin K8Upgrade serisi) kullanmanız gerekir.

ÖNEMLİ: 939CPU 0.1'i kurmak için CPU Future destekleyen ASRock anakartları (örneğin K8Upgrade serisi) kullanmanız gerekir.

ÖNEMLİ: 939CPU 0.1'i kurmak için CPU Future destekleyen ASRock anakartları (örneğin K8Upgrade serisi) kullanmanız gerekir.

ÖNEMLİ: 939CPU 0.1'i kurmak için CPU Future destekleyen ASRock anakartları (örneğin K8Upgrade serisi) kullanmanız gerekir.

ÖNEMLİ: 939CPU 0.1'i kurmak için CPU Future destekleyen ASRock anakartları (örneğin K8Upgrade serisi) kullanmanız gerekir.



ÖNEMLİ 4: ÇPÜ konfigürasyonları için ASRock anakart