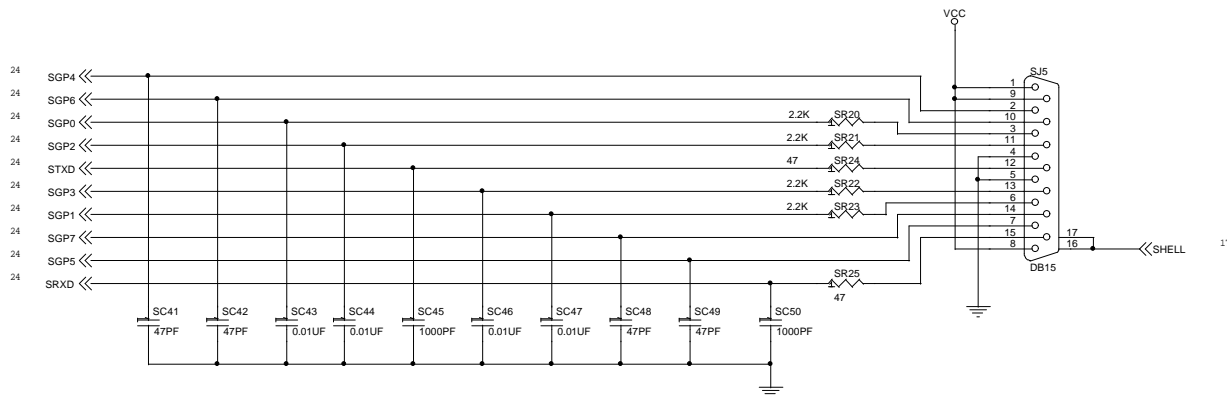
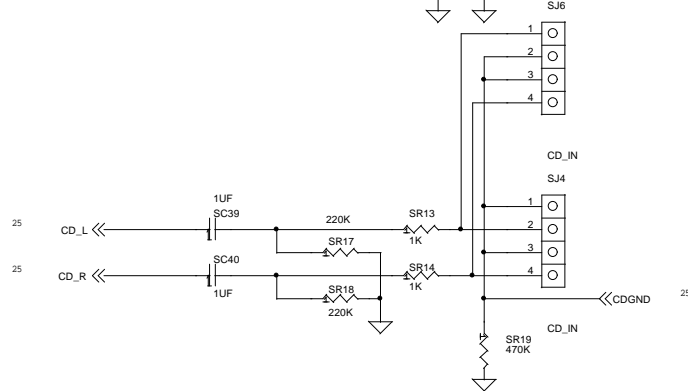
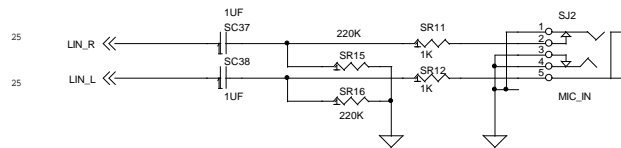
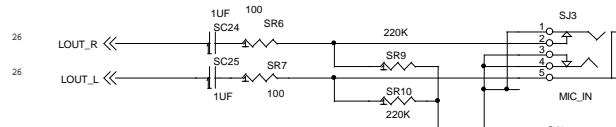
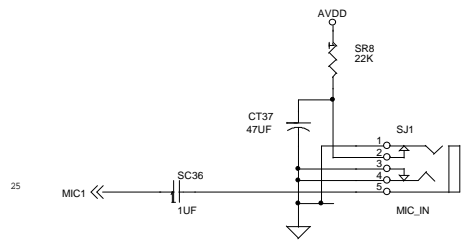


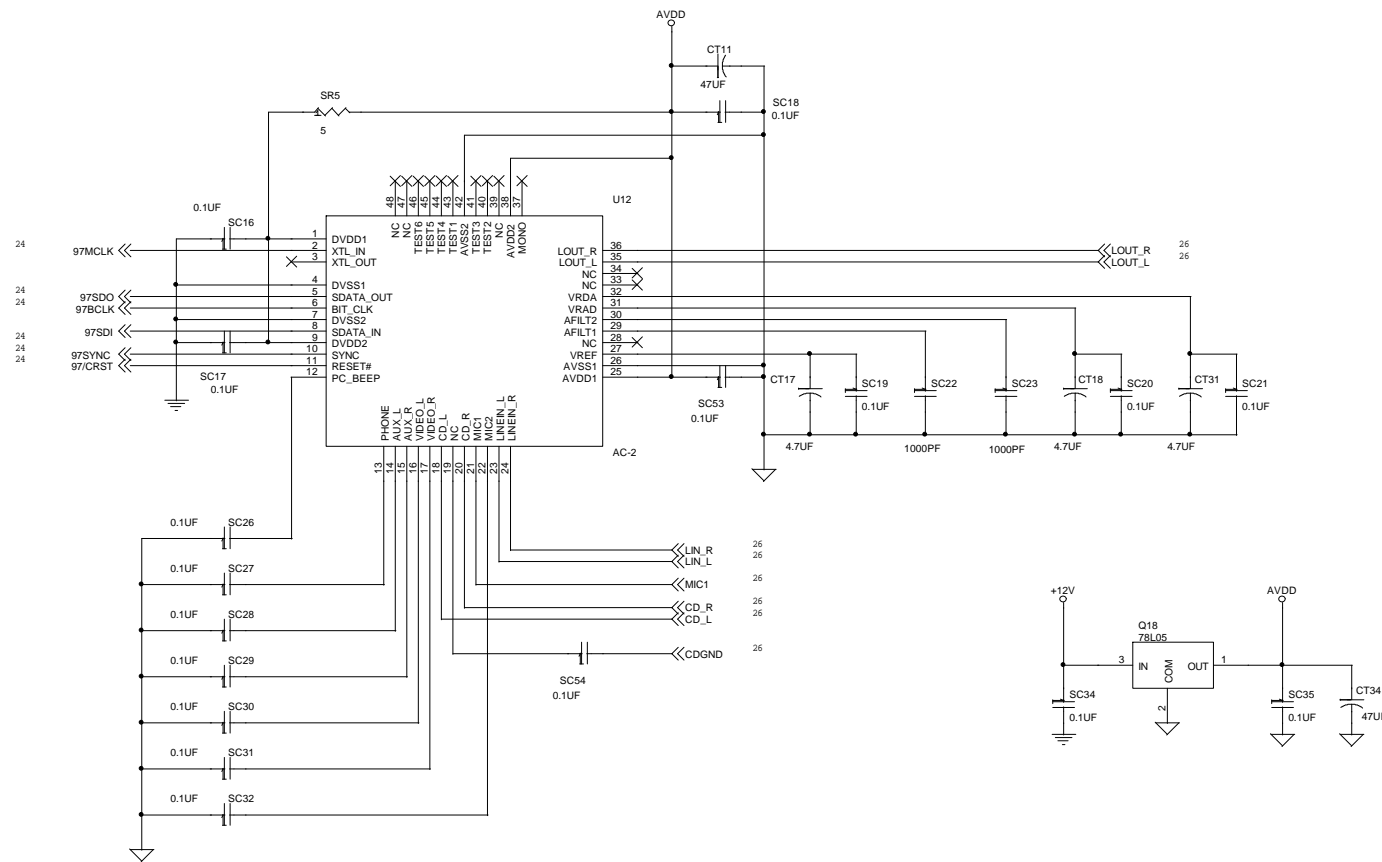
- |11.SCH
- |12A.SCH
- |13A.SCH
- |14A.SCH
- |15B.SCH
- |16A.SCH
- |17A.SCH
- |18B.SCH
- |19B.SCH
- |10A.SCH
- |11A.SCH
- |12A.SCH
- |13A.SCH
- |14A.SCH
- |15A.SCH
- |16B.SCH
- |17A.SCH
- |18A.SCH
- |19A.SCH
- |20A.SCH
- |21B.SCH
- |22B.SCH
- |23A.SCH
- |24A.SCH
- |25B.SCH
- |26B.SCH

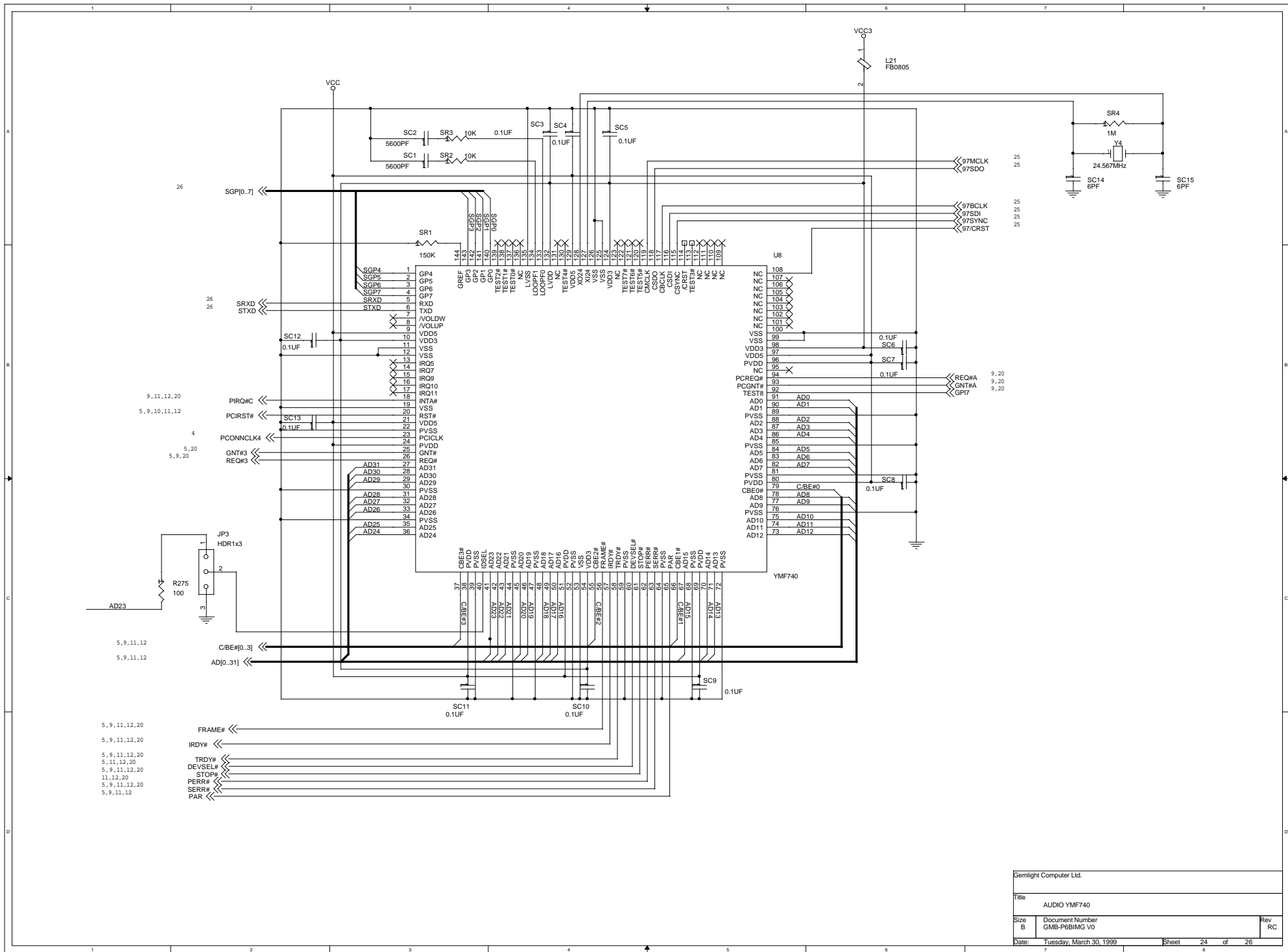
GMB-P6BIMG V0 RB
G1A-0-01 V0.01

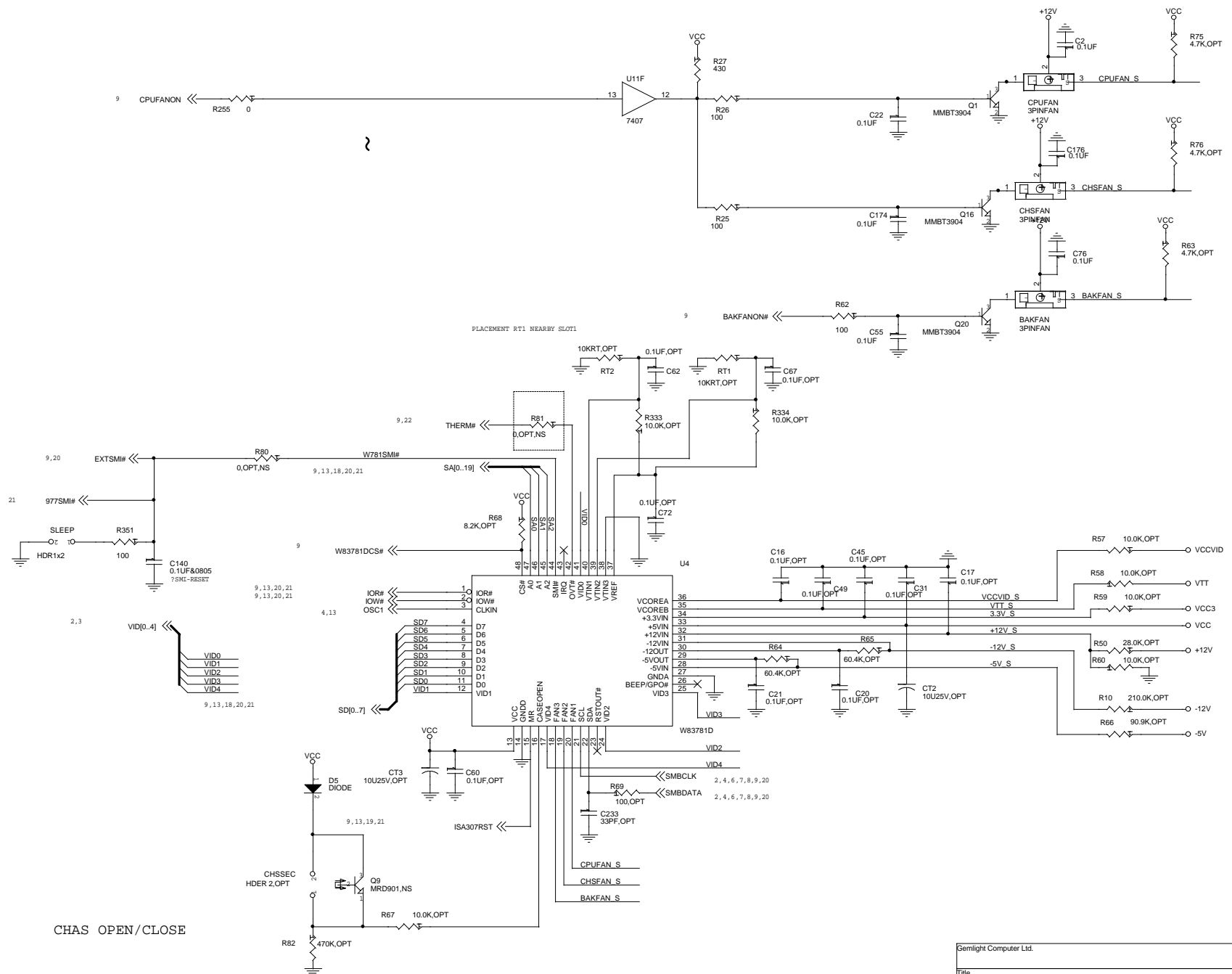
Gemlight Computer Ltd.		
Title	BLOCK DIAGRAM	
Size	Document Number	Rev
C	GMB-P6BIMG V0	RB
Date:	Monday, March 22, 1999	Sheet 1 of 28



Gemlight Computer Ltd.	
Title AC-2 I/O & GAME PORTS	
Size B	Document Number GMB-P6BIMG V0
Date Monday, December 28, 1998	Rev RB
Sheet 26	of 26



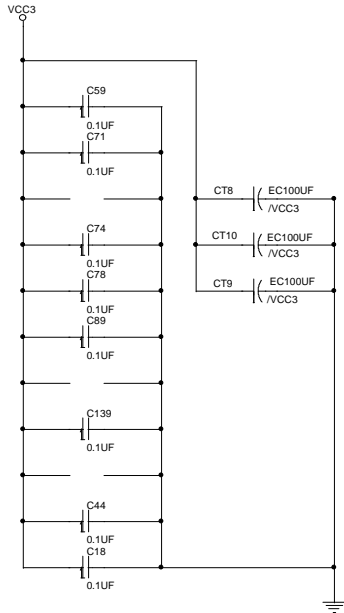




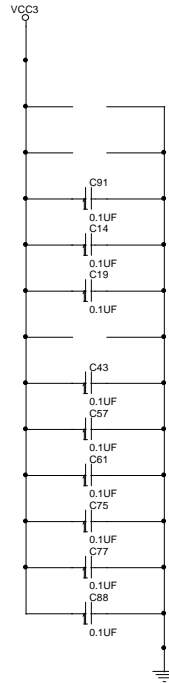
CHAS OPEN/CLOSE

Gemlight Computer Ltd.		
Title W83781D/782D SYSTEM MONITOR		
Size B	Document Number GMB-P6BIMS V0	Rev RA
Date: Thursday, November 19, 1998	Sheet 23	of 26

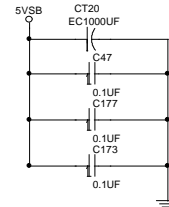
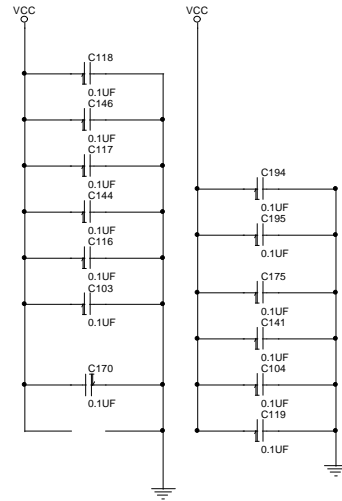
DIMM DECOUPLING



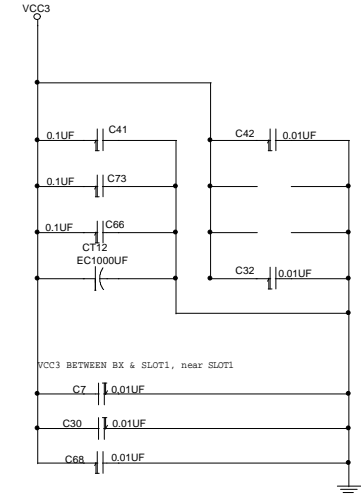
3.3V DECOUPLING



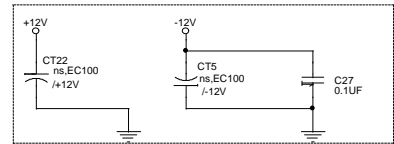
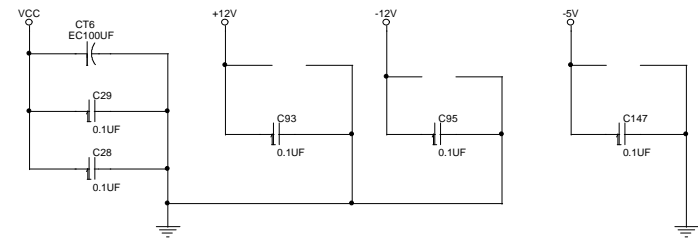
5V DECOUPLING
TTL & IC



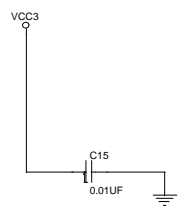
BX DECOUPLING (2X4CORN)



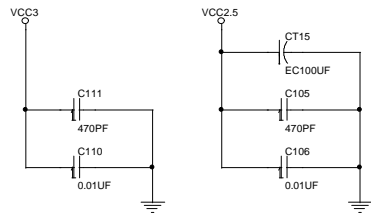
POWER DECOUPLING



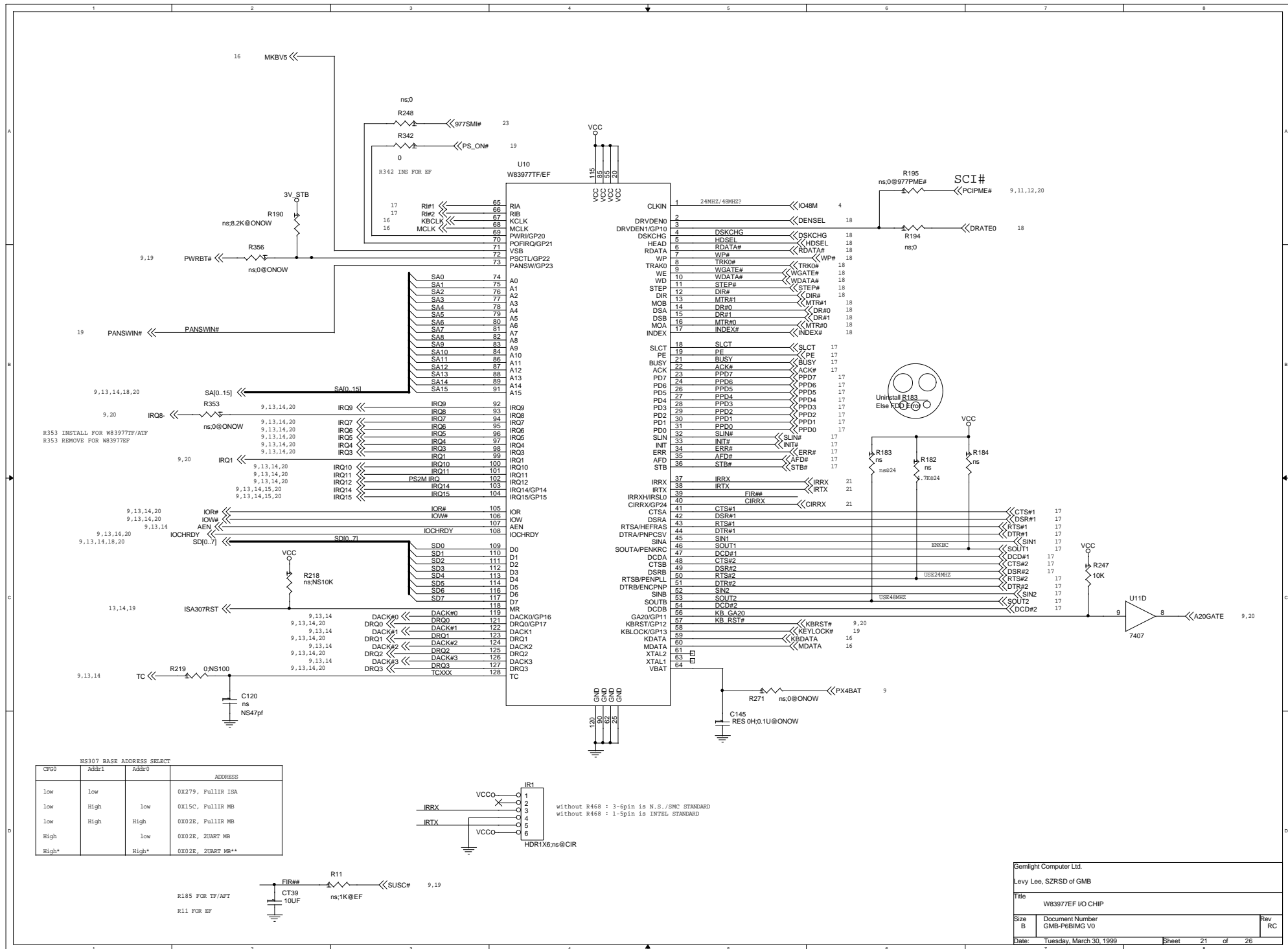
CKBF DECOUPLING



CK100 DECOUPLING

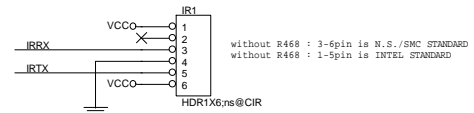


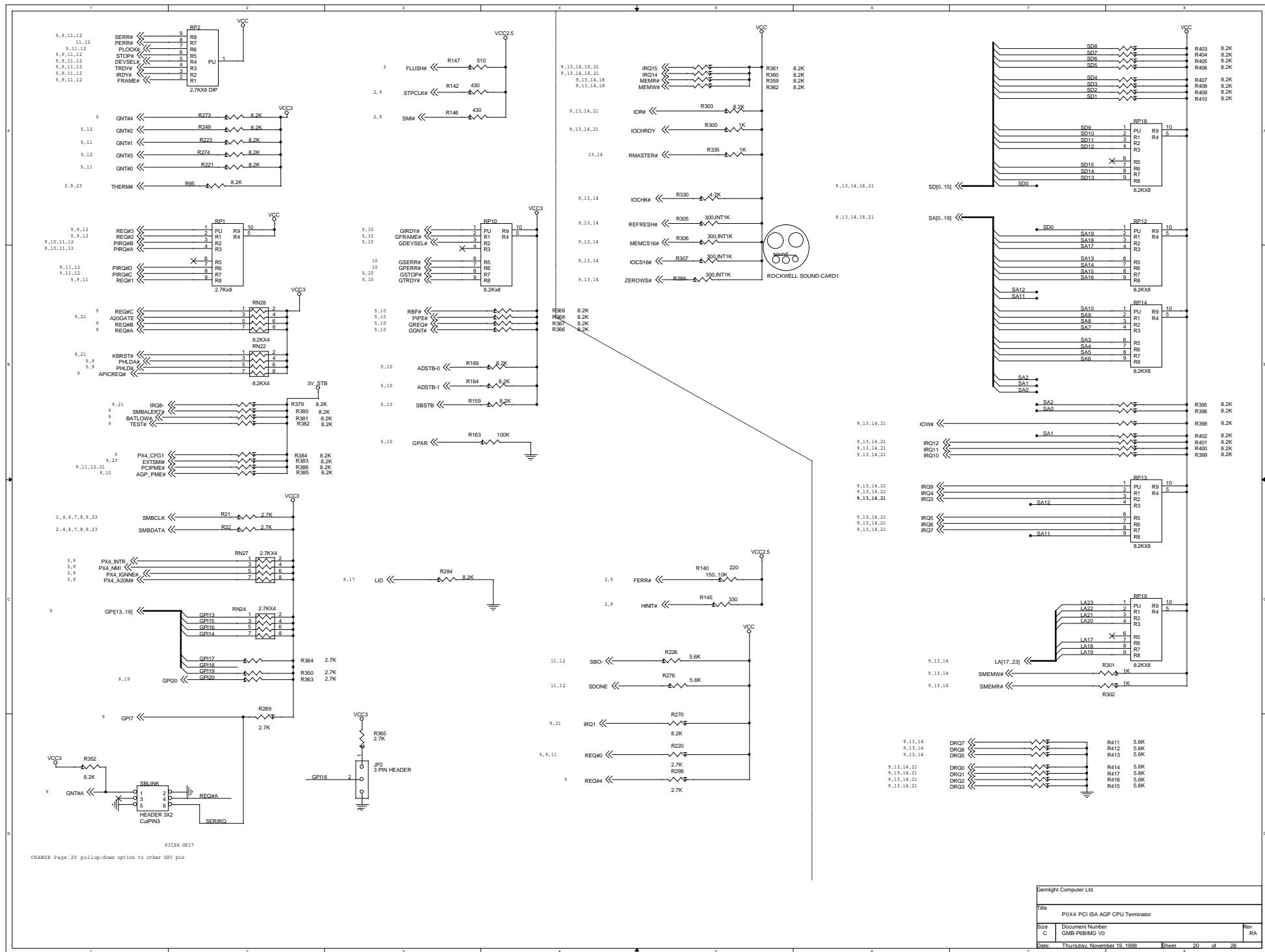
Gemlight Computer Ltd.	
Levy Lee, SZRSD of GMB	
Title 443BX DIMM VCC3/VCC/CLOCK/VTT Decoupl	
Size B	Document Number GMB-P6BIMG V0
Date: Monday, December 28, 1998	Sheet 22 of 23



NS307 BASE ADDRESS SELECT

CF#0	Addr1	Addr0	ADDRESS
low	low	low	0X279, Fulller ISA
low	High	low	0X15C, Fulller MB
low	High	High	0X02E, Fulller MB
High	low	low	0X02E, ZUART MB
High*	High*	High*	0X02E, ZUART MB**

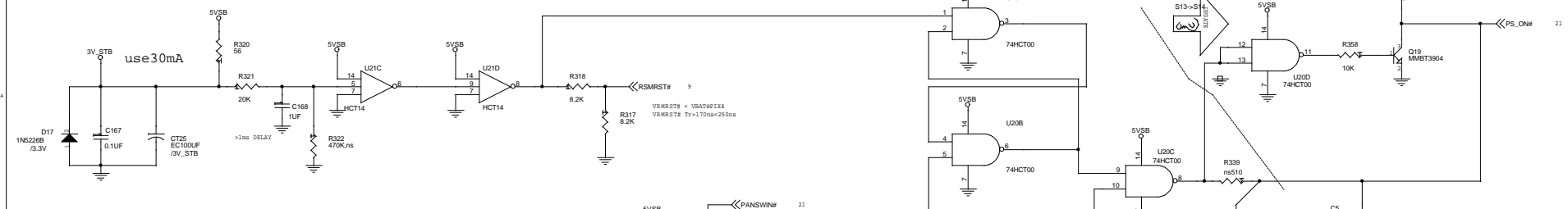




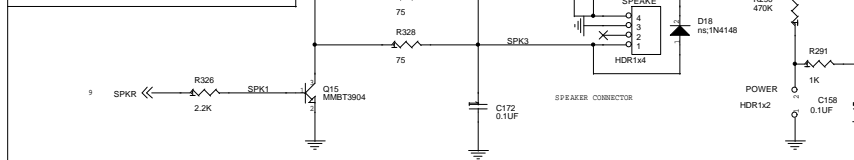
PIIX4 GP17
 CHANGE Page.20 pullup/down option to other GP1 pin

Demlight Computer Ltd.			
Title	PIIX4 PCI ISA AGP CPU Terminator		
Size	Document Number	Rev	RA
C	GMB-PBIMG V0		
Date:	Thursday, November 19, 1998	Sheet	20 of 28

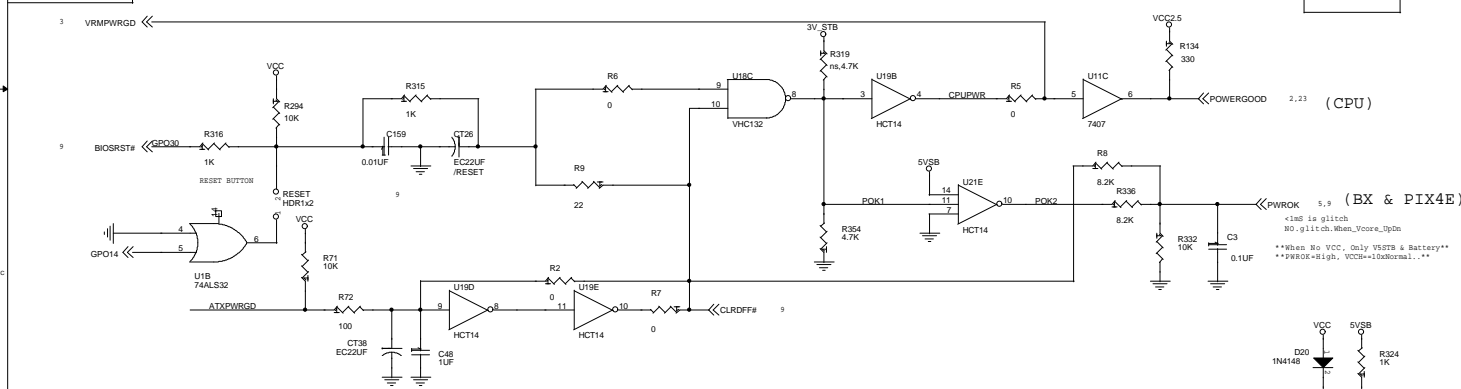
POWER SUPPLY



SPEAKER CONN.

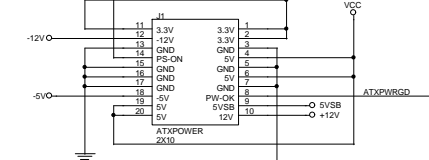
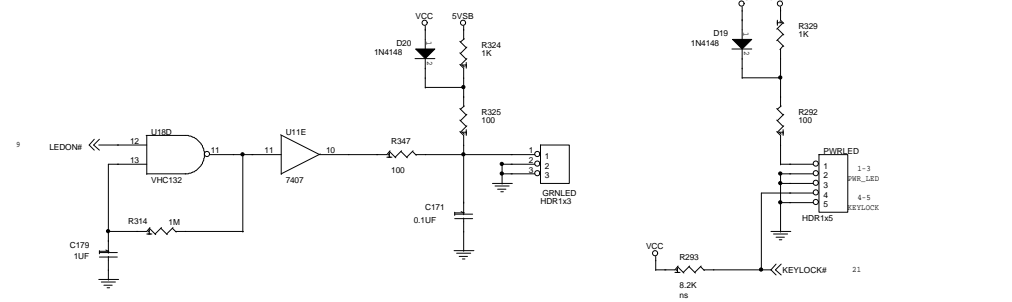
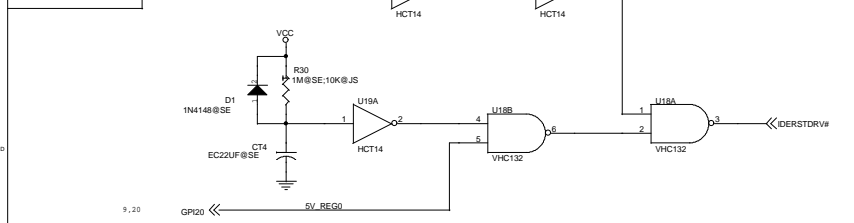


RESET



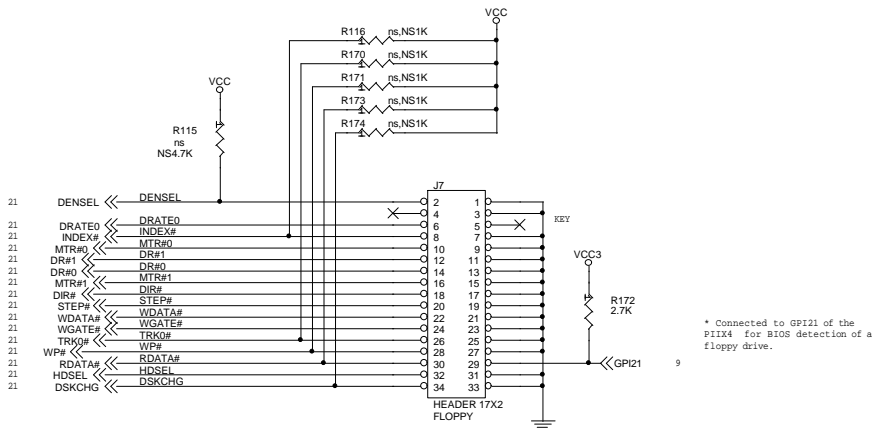
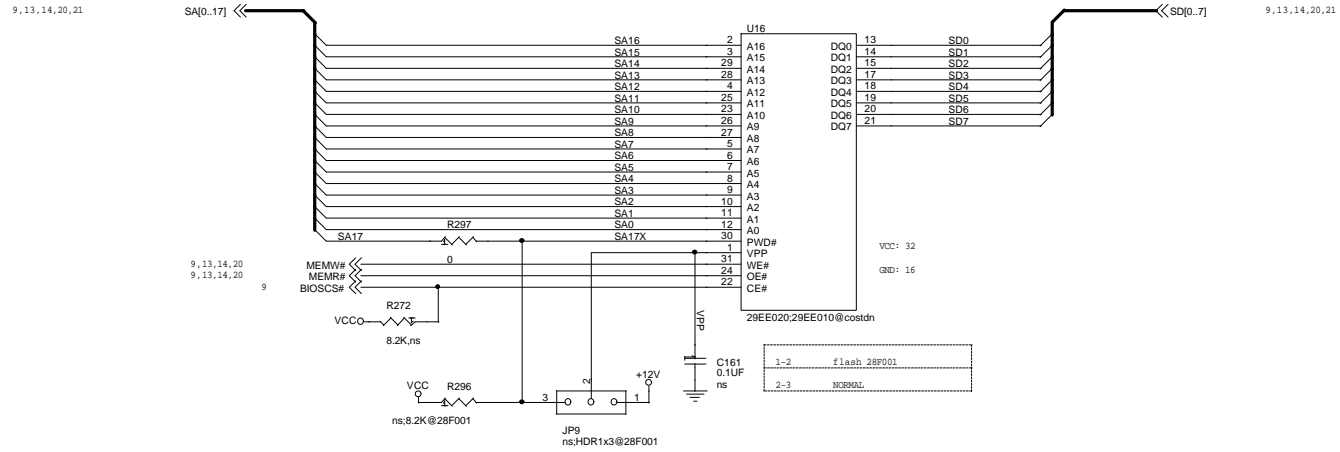
@SE:AT SpiEZ
@JS:AT JmpSET

IDE-RESET



Gemlight Computer Ltd.			
Title	POWER, SPEAKER, HDLED		
Size	Document Number	GMB-PBIMG V0	Rev
C			RA
Date:	Monday, December 28, 1998	Sheet	19 of 28

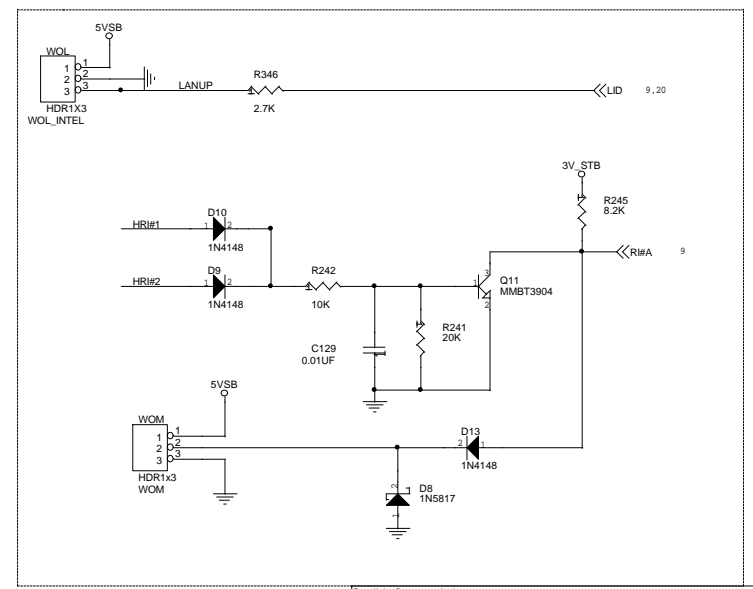
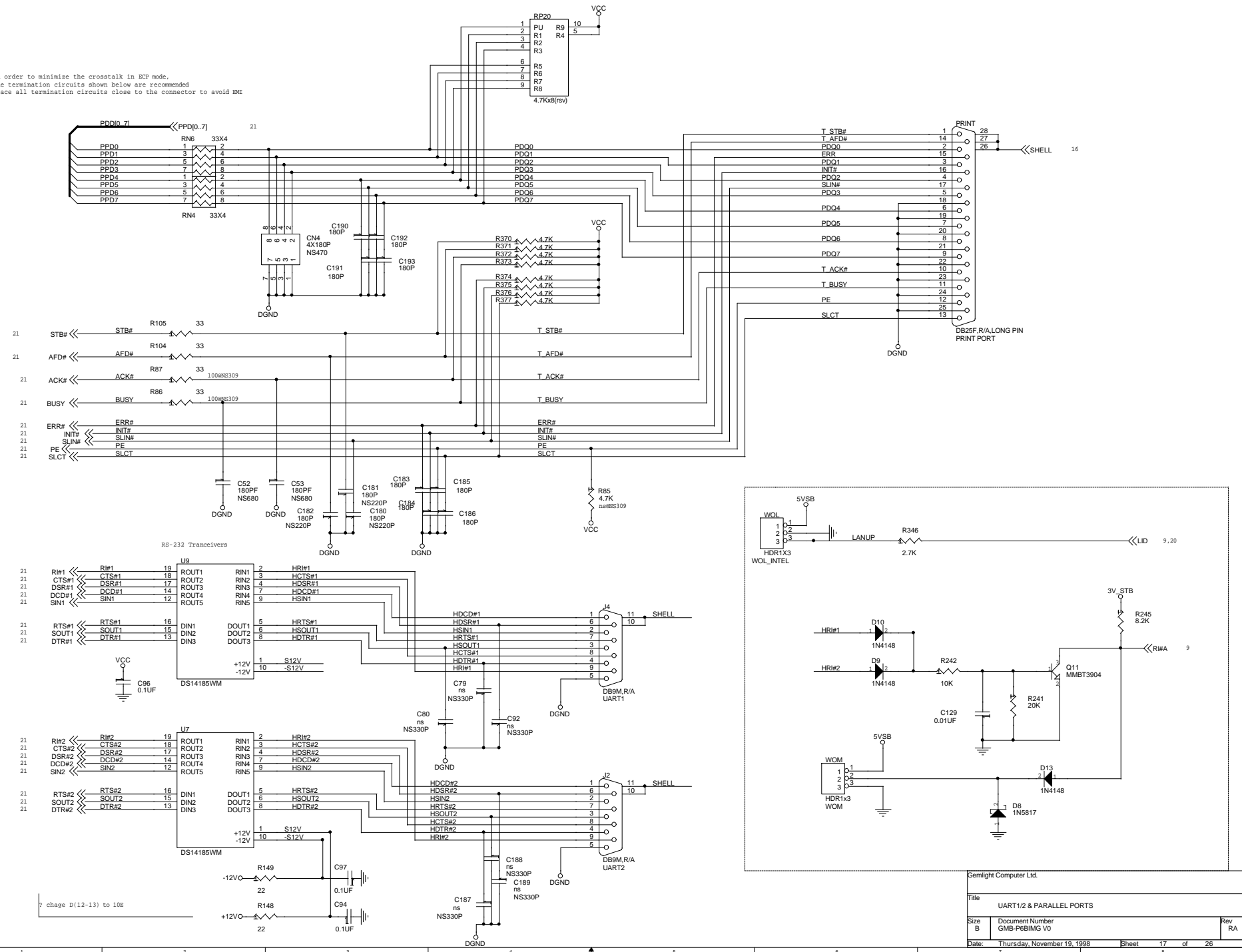
FLASH BIOS



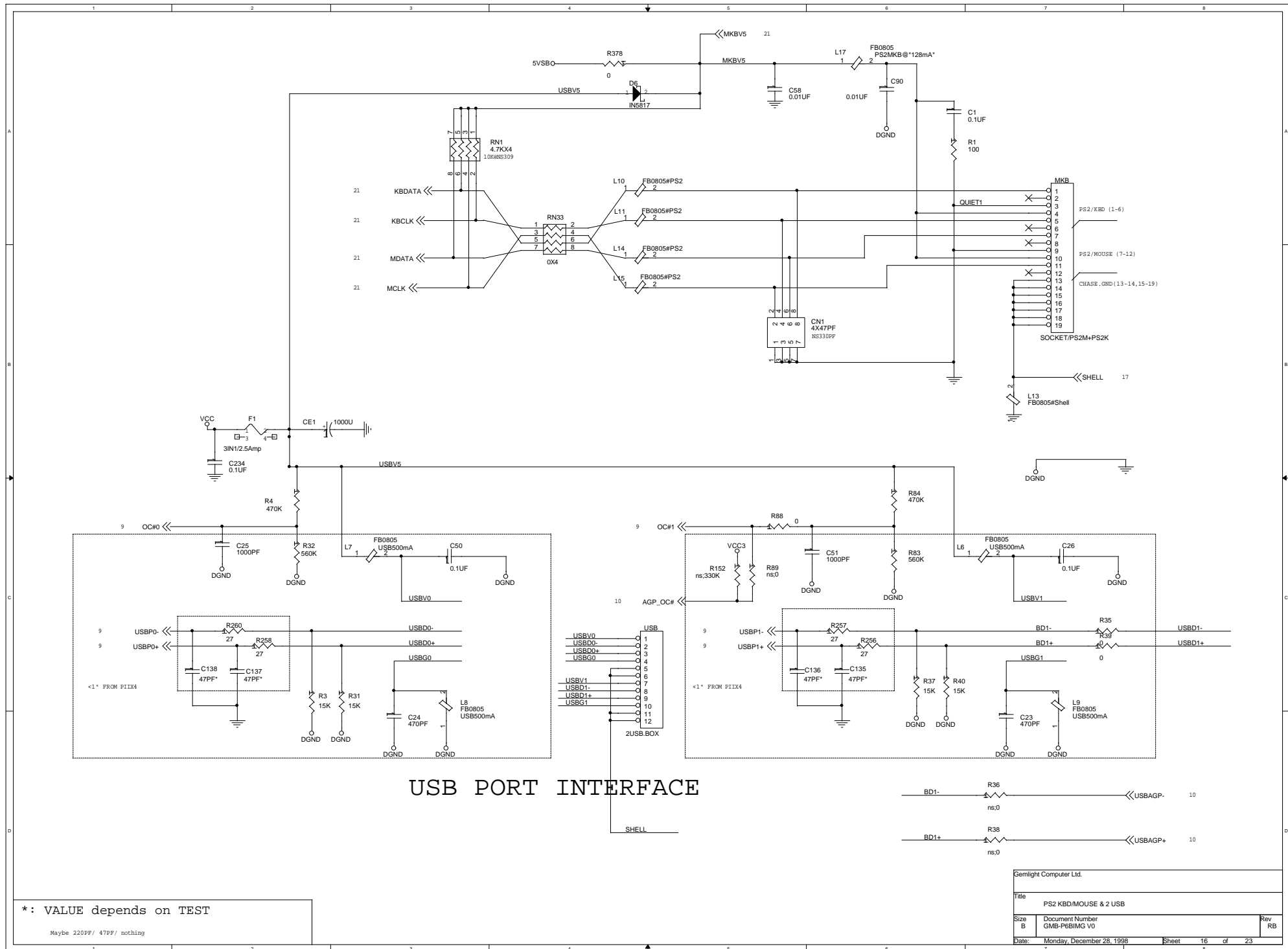
Media Sense and DRATE Options
Determined by Floppy Drive Model
and Preference of System Designer

Gemlight Computer Ltd.	
Title	FLOPPY & FLASH BIOS
Size	Document Number
B	GMB-P6BIMG V0
Date:	Thursday, November 19, 1998
Sheet	18 of 26
Rev	RA

In order to minimize the crosstalk in ECP mode, the termination circuits shown below are recommended. Place all termination circuits close to the connector to avoid EMI.



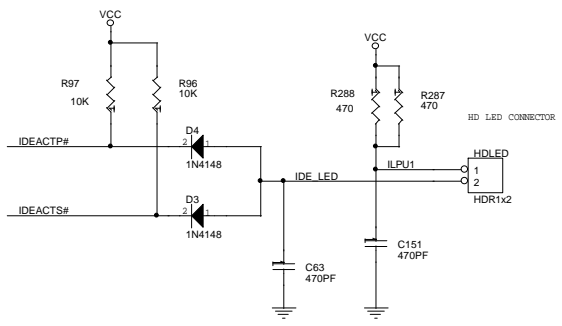
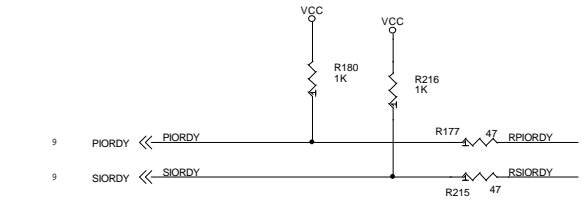
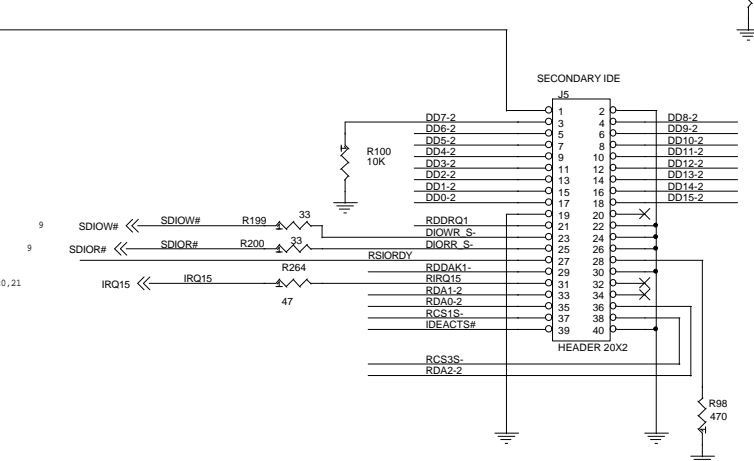
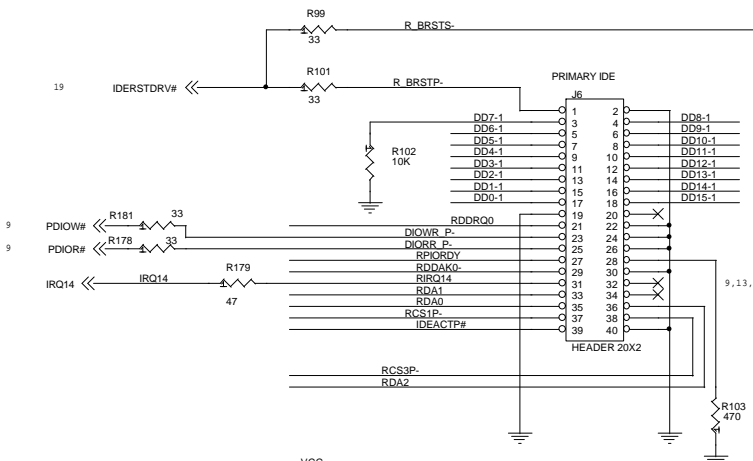
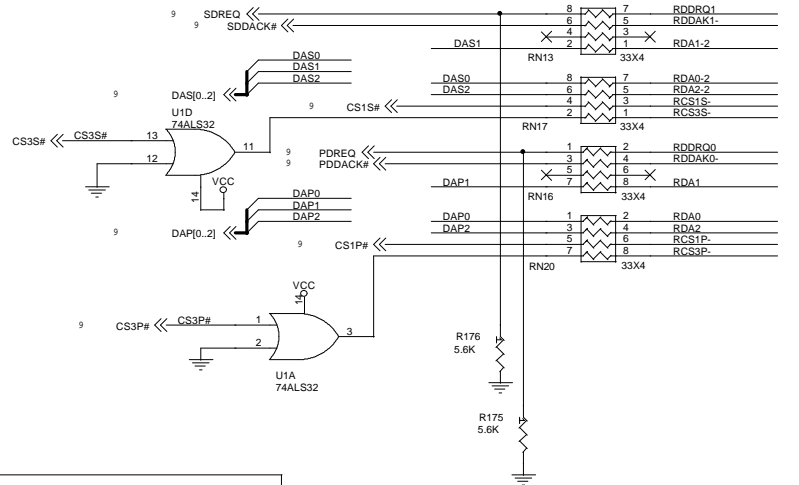
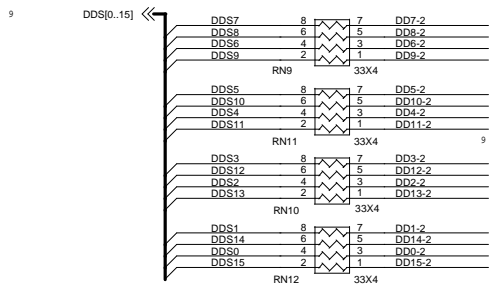
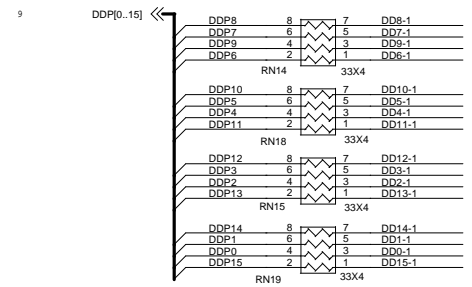
Gemlight Computer Ltd.		
Title: UART1/2 & PARALLEL PORTS		
Size B	Document Number: GMB-P6BIMS V0	Rev RA
Date: Thursday, November 19, 1998	Sheet 17	of 26



USB PORT INTERFACE

* : VALUE depends on TEST
 Maybe 220PF / 47PF / nothing

Gemlight Computer Ltd.	
Title PS2 KBD/MOUSE & 2 USB	
Size B	Document Number GMB-PI6BMS V0
Date Monday, December 28, 1998	Rev RB
Sheet 16	of 23

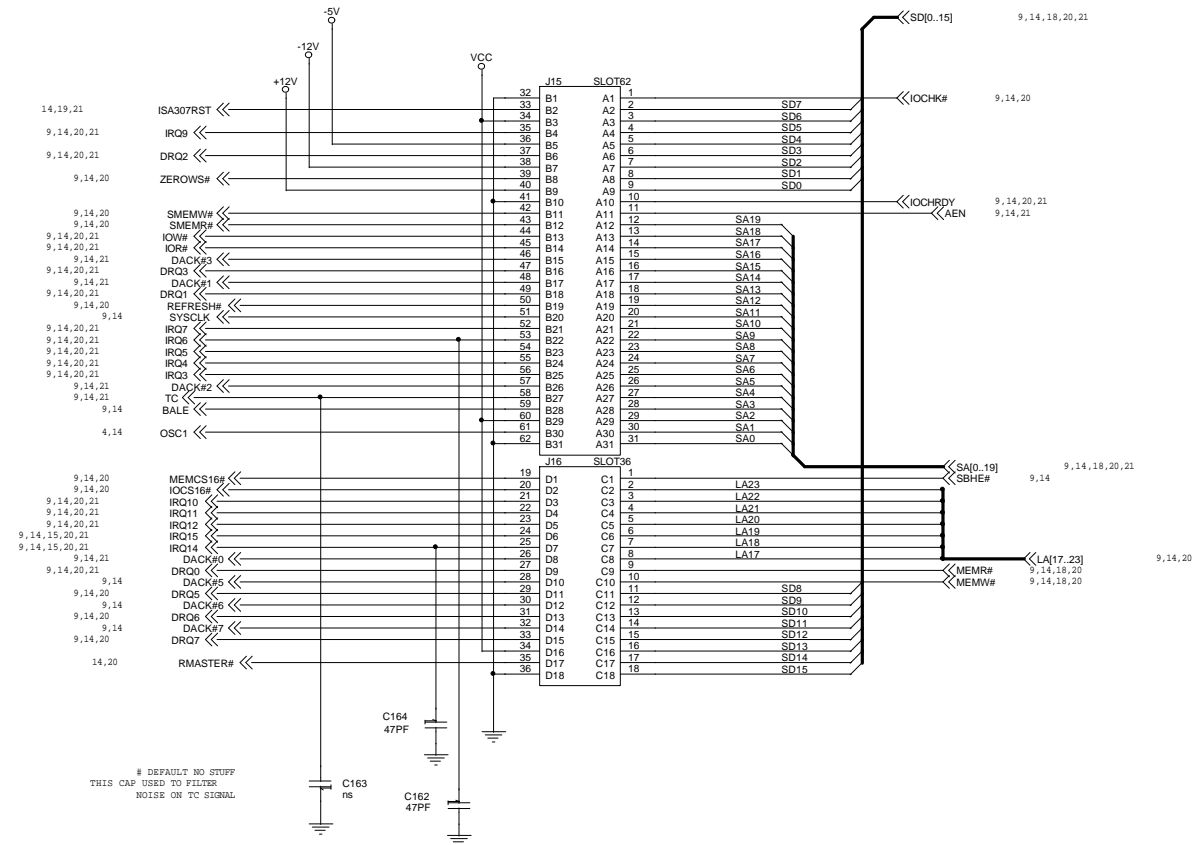


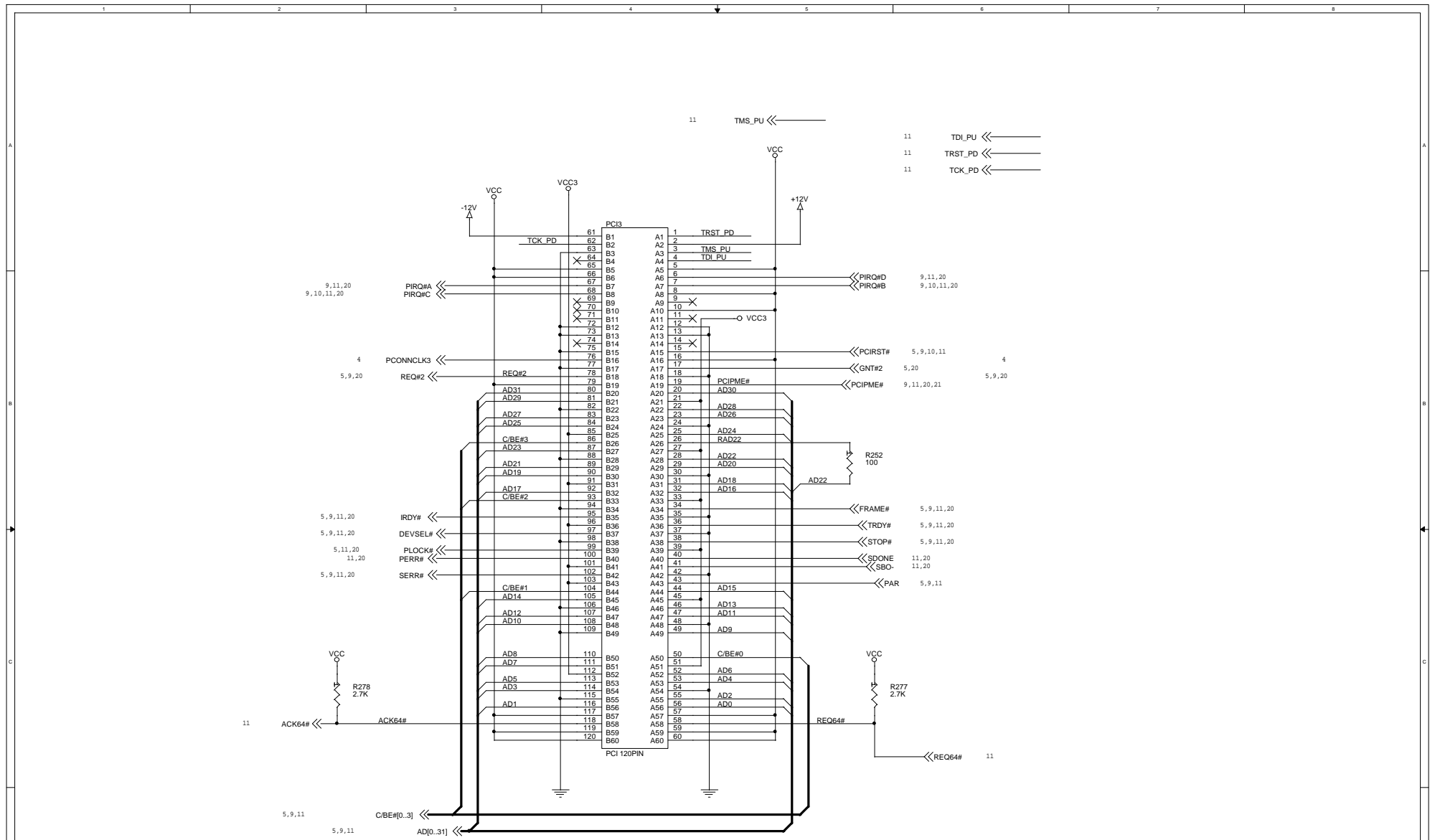
IDE BUFFER CLOSE TO PIIX (within 4")
TERM.. RESISTOR CLOSE TO CONNECTOR

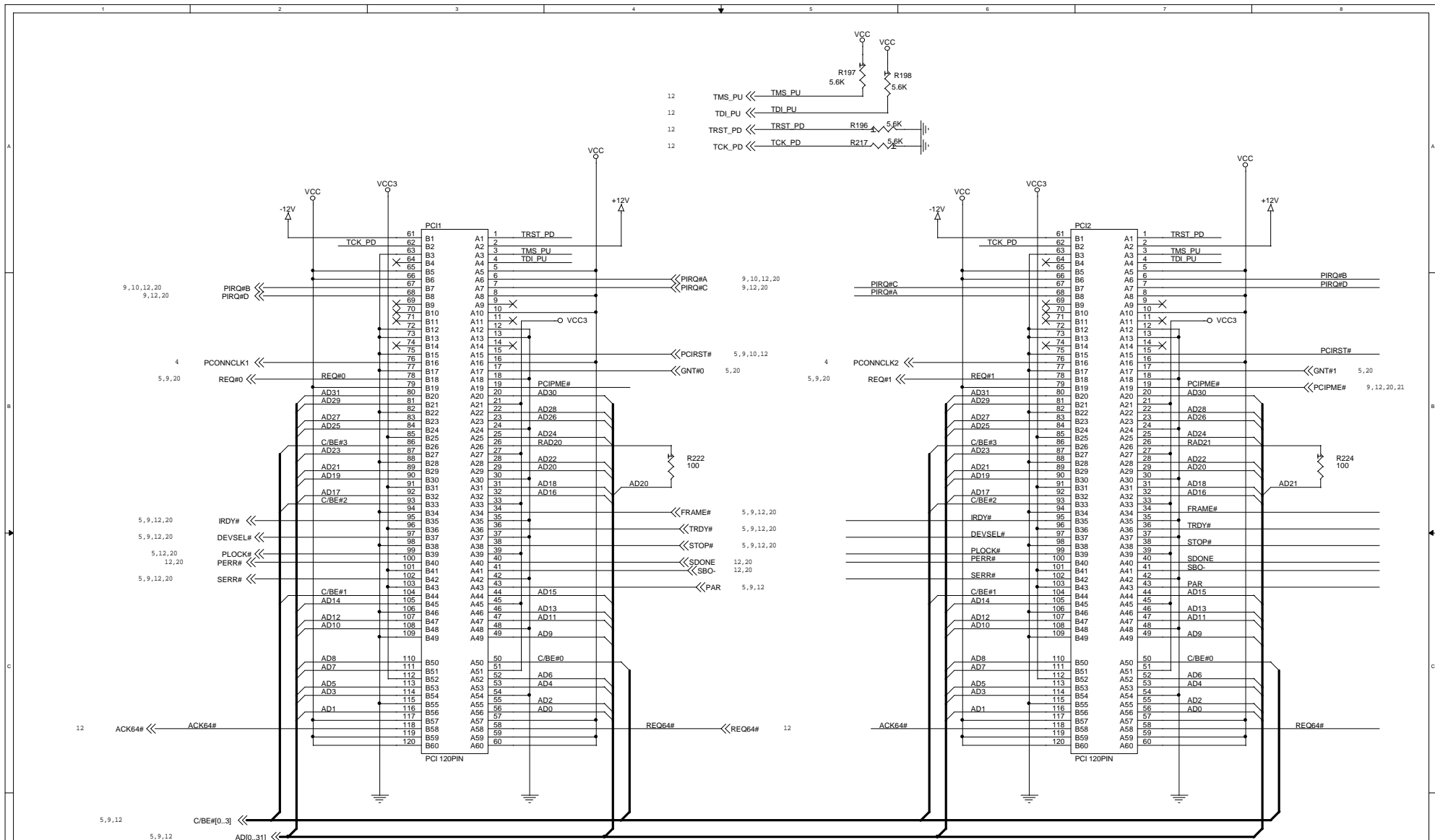
IDE CONNECTORS

Gemlight Computer Ltd.	
Title PCI IDE CONNECTORS	
Size B	Document Number GMB-P6BIMG V0
Date Thursday, November 19, 1998	Sheet 15 of 26
Rev RA	

ISA SLOT 1

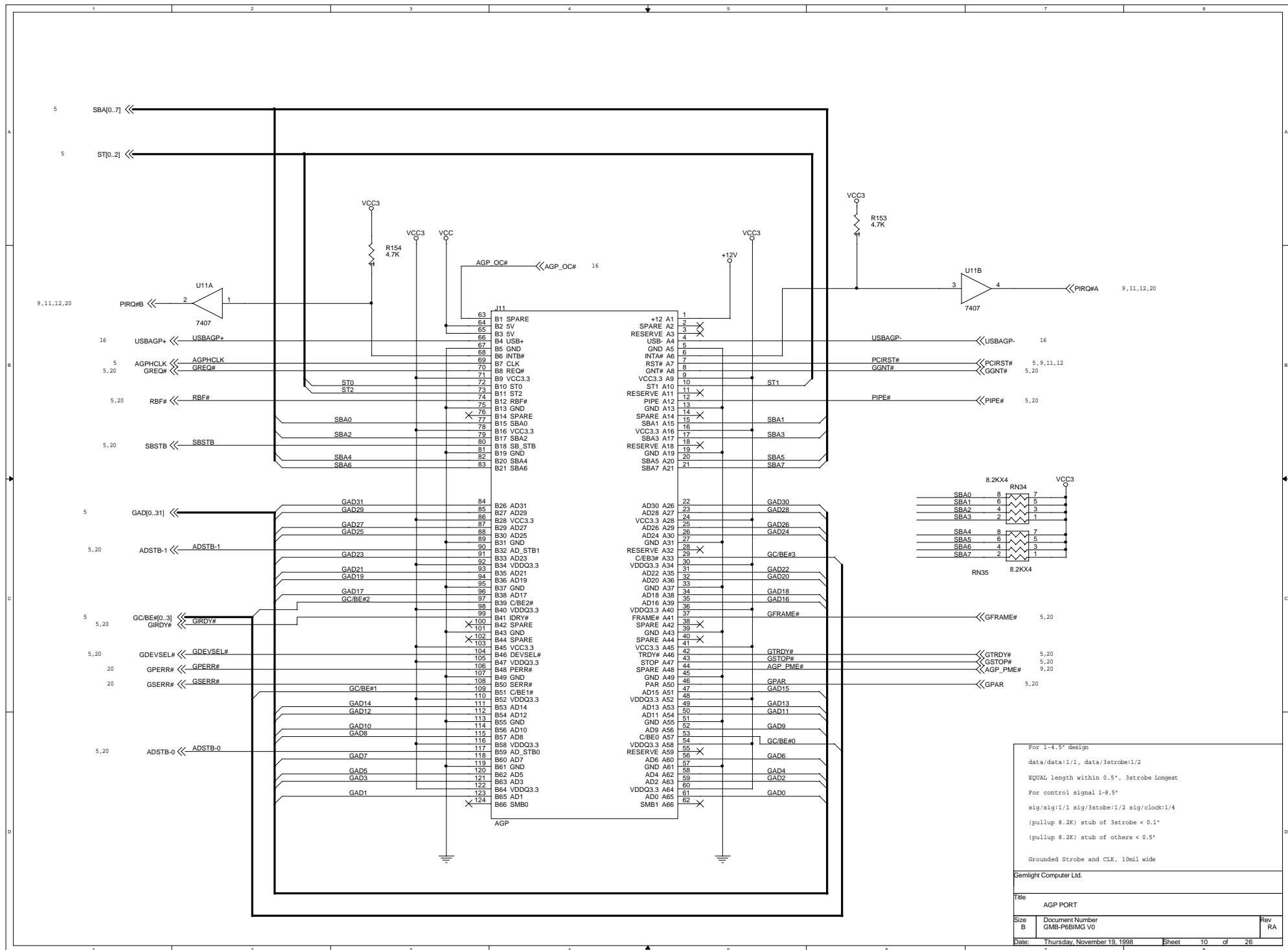






PCI SLOTS #1 & #2

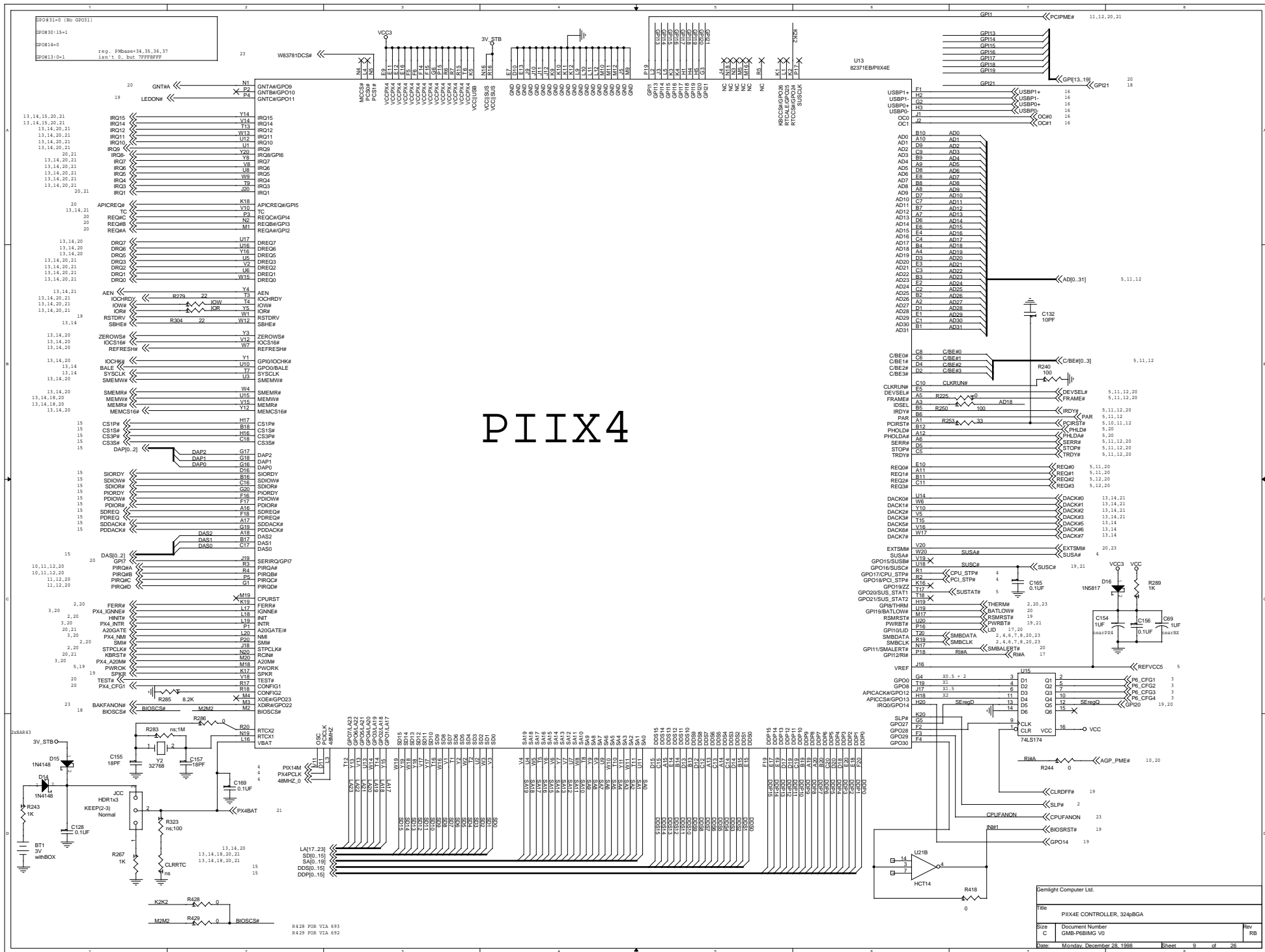
Gemlight Computer Ltd.			
Title PCI1 & 2 Connectors			
Size B	Document Number PCI1 & PCI2 connectors	Rev RA	
Date: Thursday, November 19, 1998	Sheet 11	of 26	



For 1-4.5" design
 data/data:1/1, data/3stroke:1/2
 EQUAL length within 0.5", 3stroke Longest
 For control signal 1-8.5"
 sig/sig:1/1 sig/3stroke:1/2 sig/clock:1/4
 (pullup 8.2K) stub of 3stroke < 0.1"
 (pullup 8.2K) stub of others < 0.5"
 Grounded Strobe and CLK, 10mll wide

Gemlight Computer Ltd.	
Title AGP PORT	
Size B	Document Number GMB-IP6BIMG V0
Date: Thursday, November 19, 1998	Sheet 10 of 26
Rev RA	

PIIX4

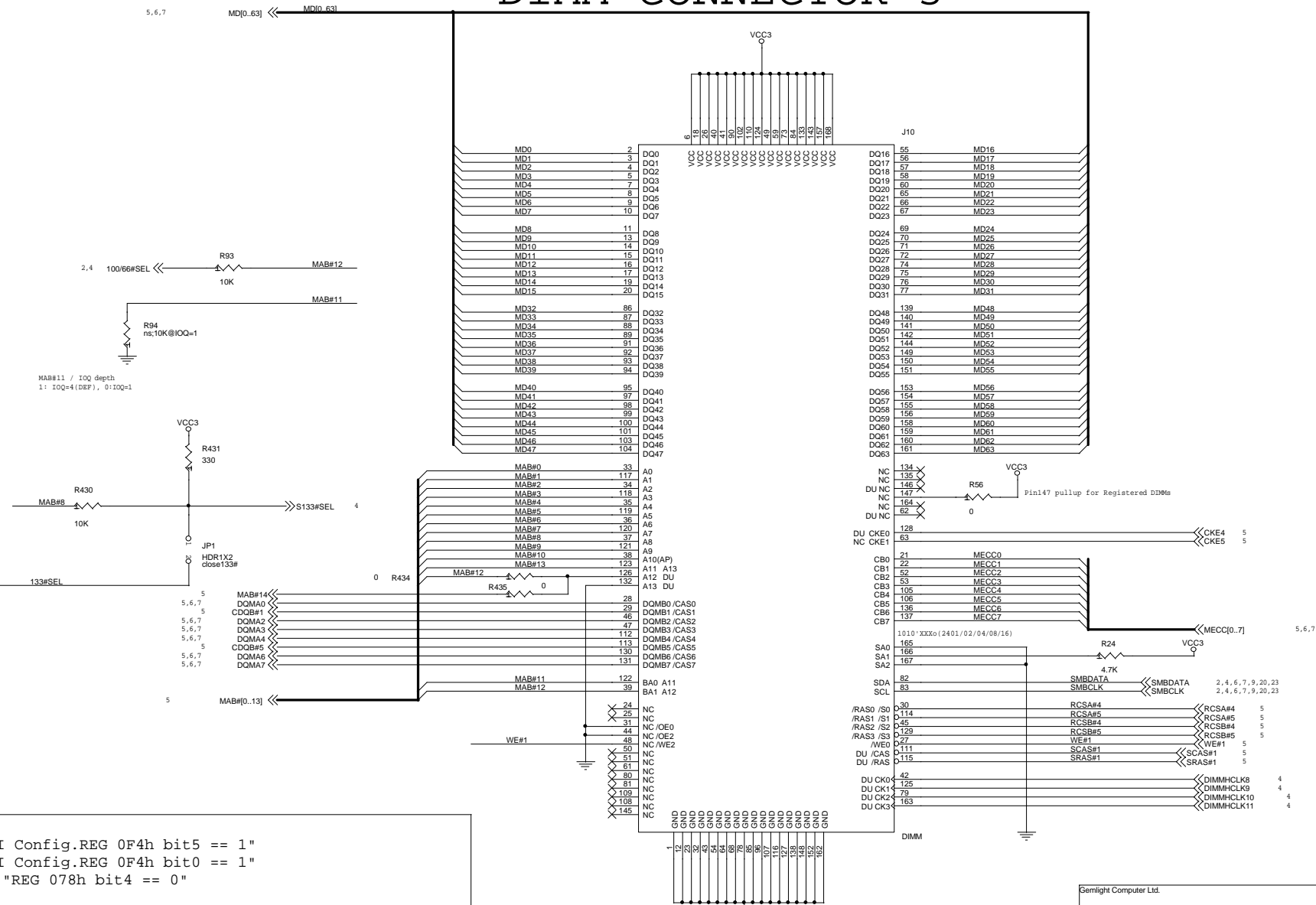


R428 FOR V1A 693
R429 FOR V1A 692

Semlight Computer Ltd.	
Title	PIIX4E CONTROLLER, 32q-BGA
Size	C
Docu	Document Number GMB-PBIMG-V0
Date	Monday, December 28, 1998
Sheet	9 of 28
Rev	RB

FAR FROM BX, used it first

DIMM CONNECTOR 3



ERRATA v0.0

- 1) set "PCI Config.REG 0F4h bit5 == 1"
- 2) set "PCI Config.REG 0F4h bit0 == 1"
- 3) set AGP "REG 078h bit4 == 0"

Gemlight Computer Ltd.

Title
MEMORY (66/100SDRAM & 66EDO)

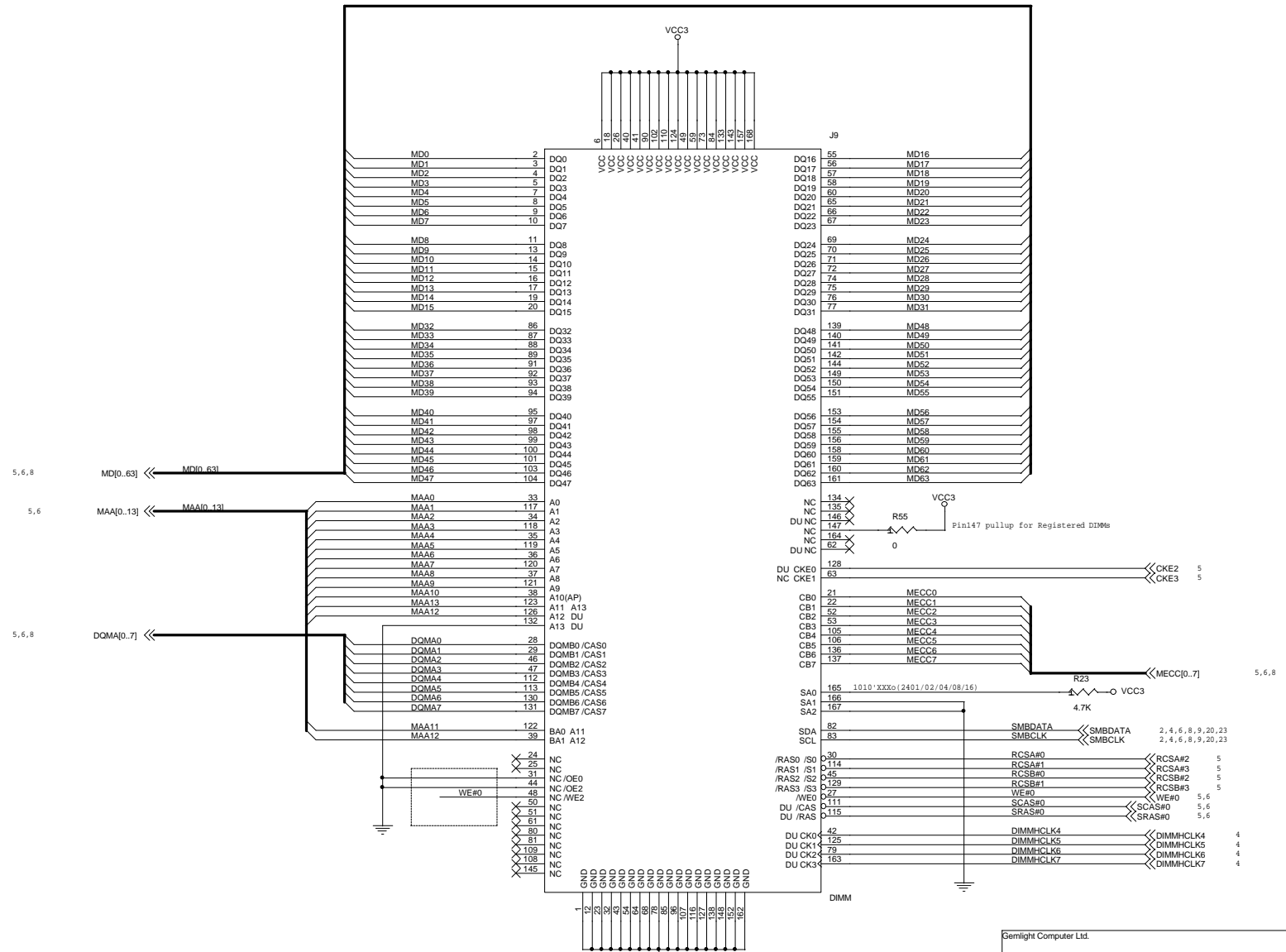
Size B Document Number
GMB-P6BIMS V0

Rev
RC

Date: Tuesday, March 30, 1999 Sheet 8 of 26

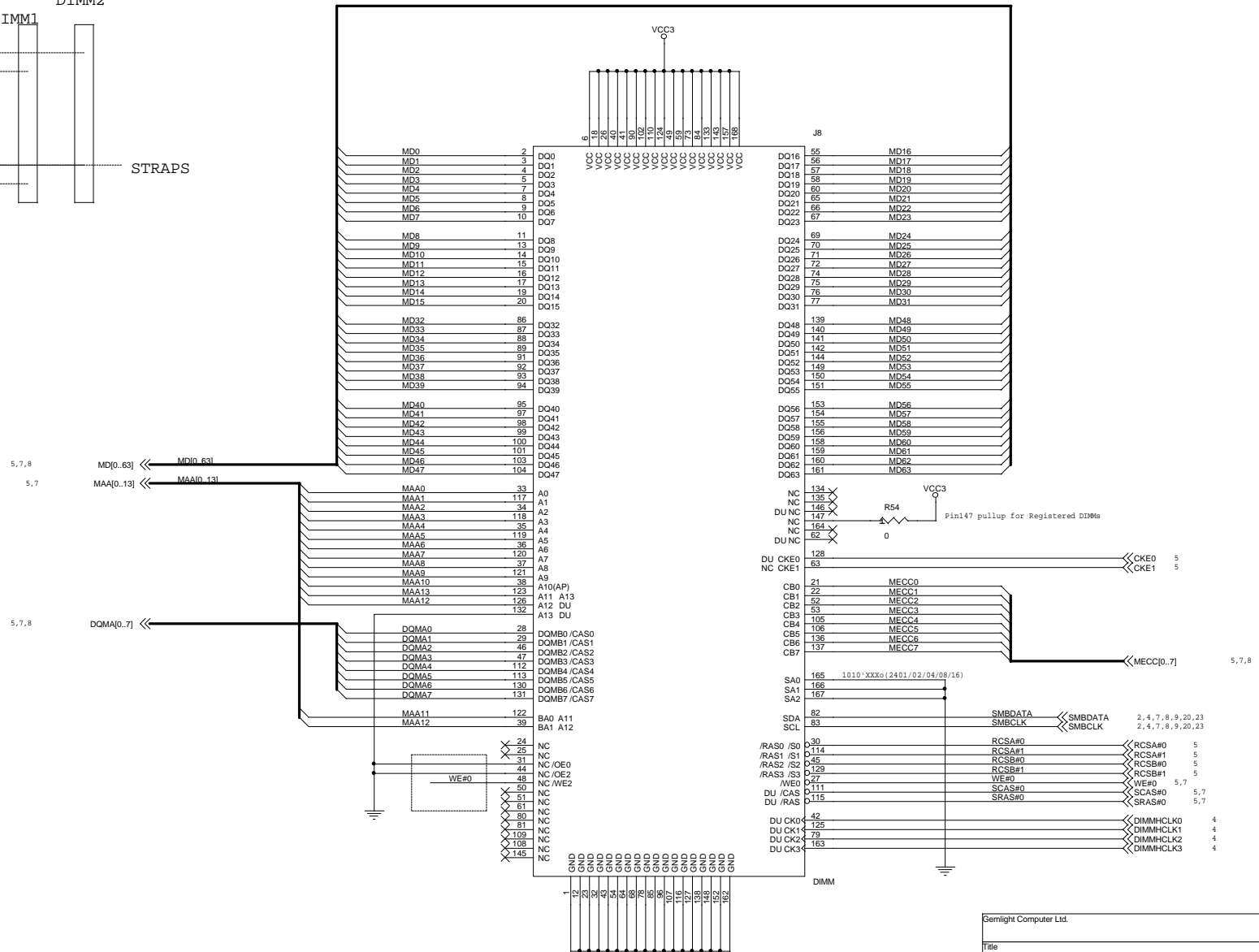
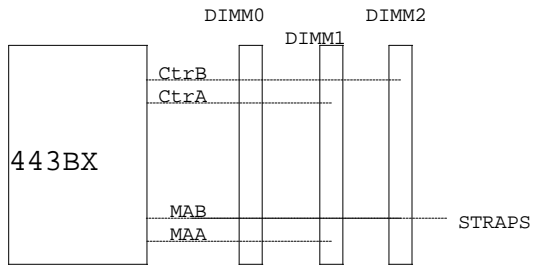
MIDDLE

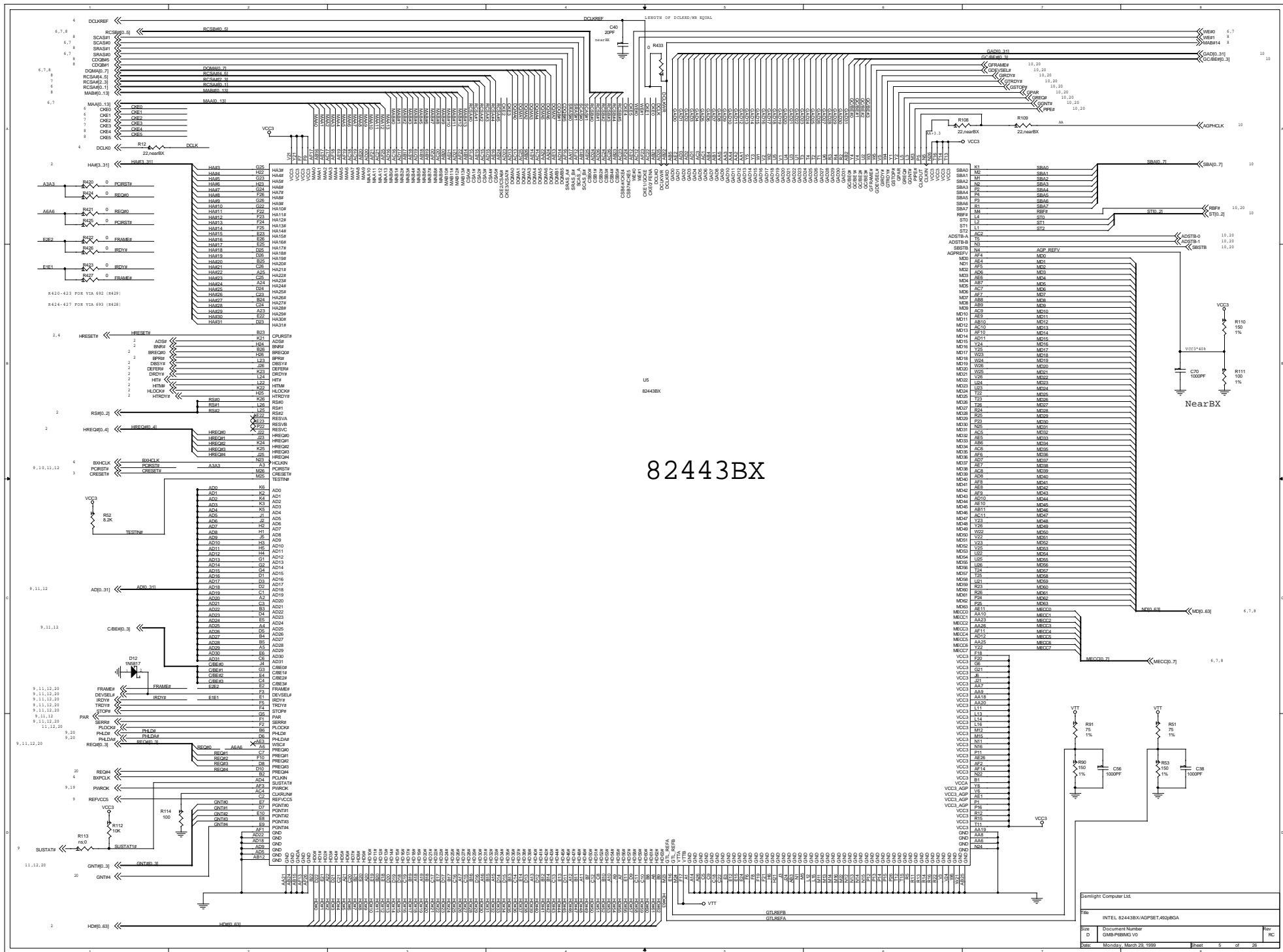
DIMM CONNECTOR 1



Near BX

DIMM CONNECTOR 0



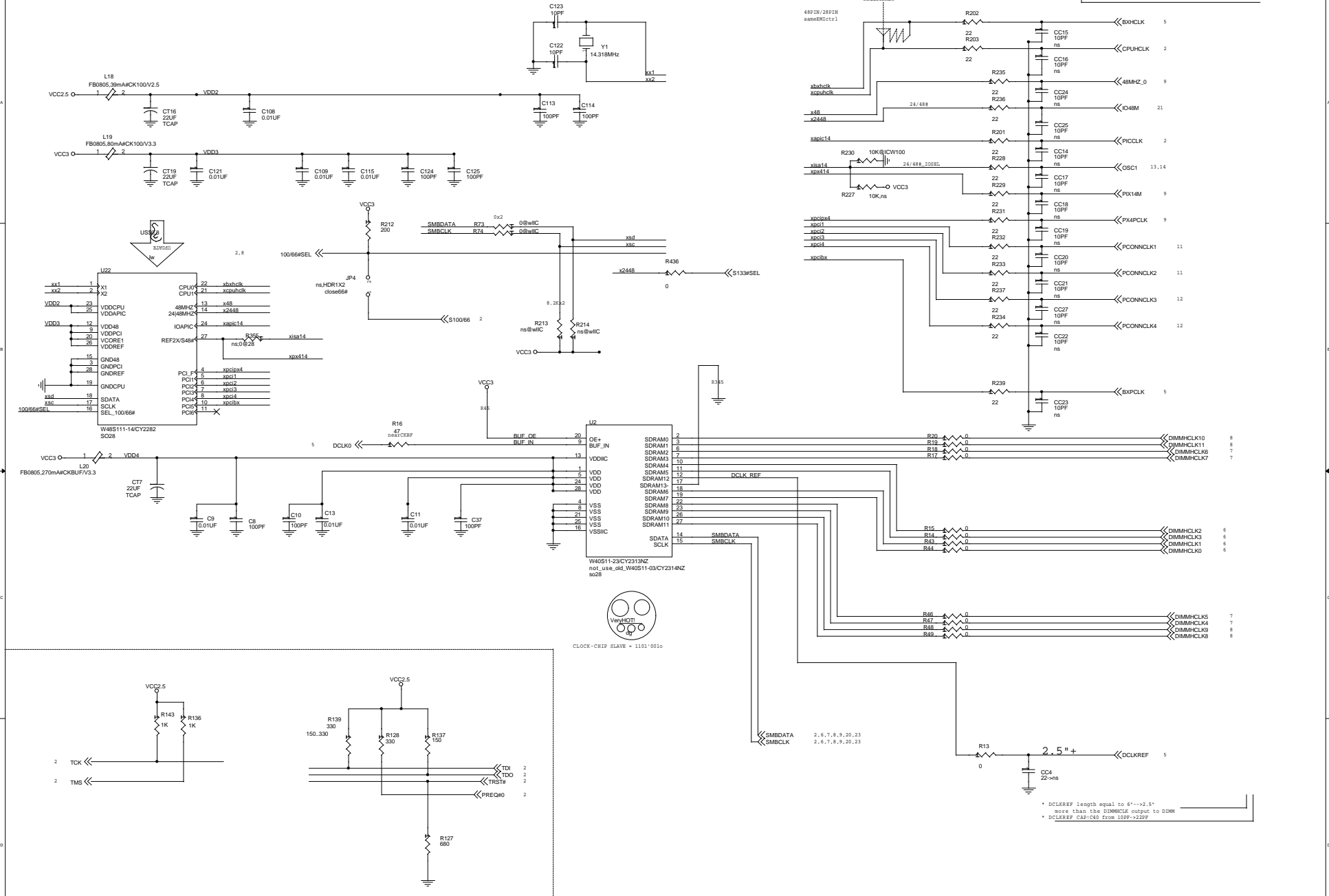


82443BX

Semlight Computer Ltd.			
File: INTEL 82443BX/AGPSET_4028BGA			
Size	Document Number	Rev	
D	GM8-PIEMEM-V0	1	PC
Date: Monday, March 29, 1999			
Sheet 5 of 26			

Y2280: 11C26/27pin must cut and pullup

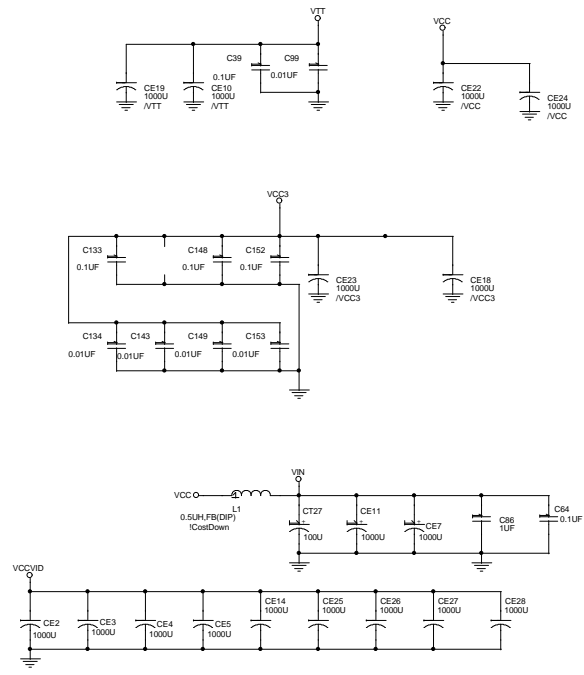
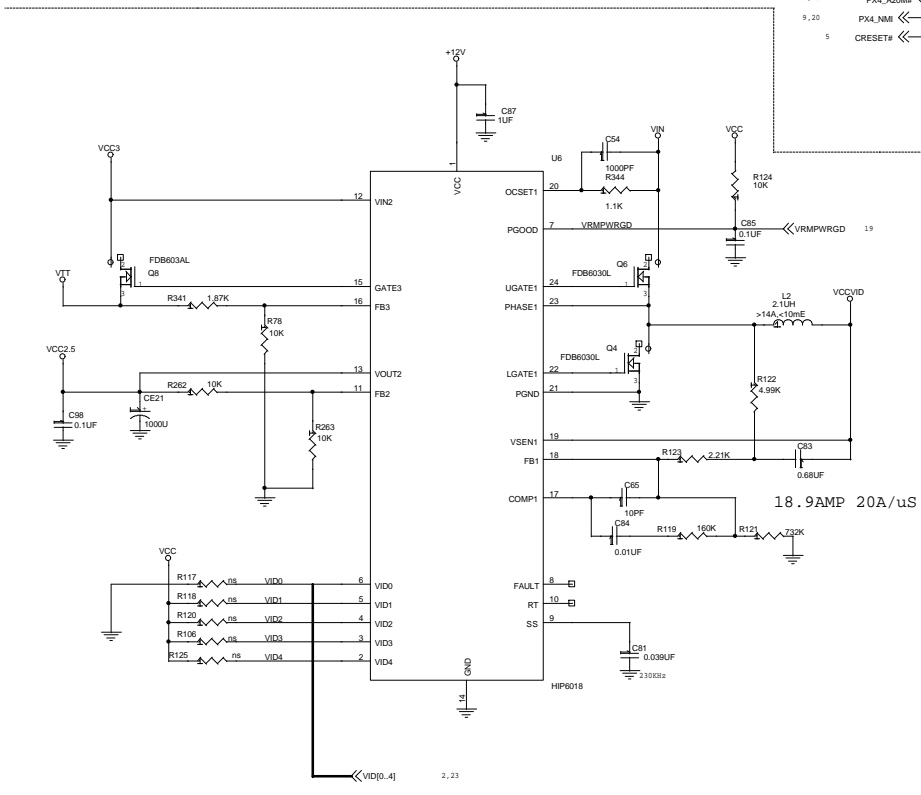
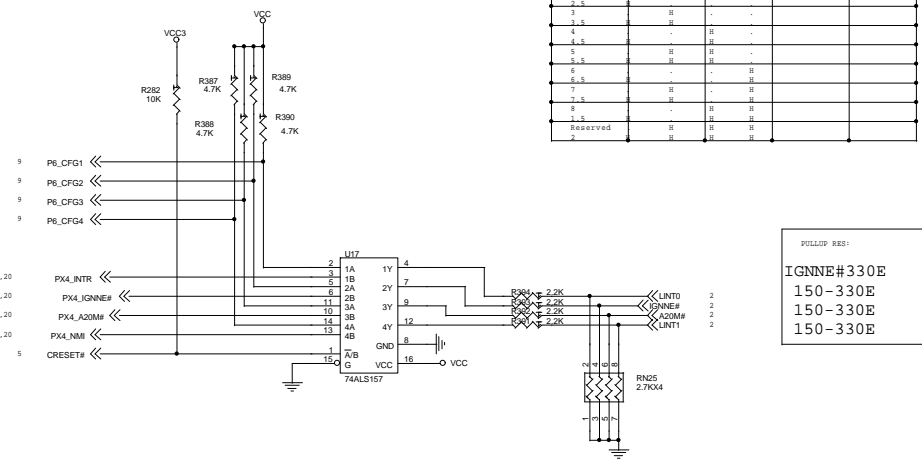
?? 10PF, ns??EMI??

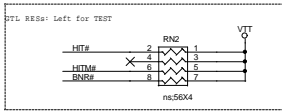
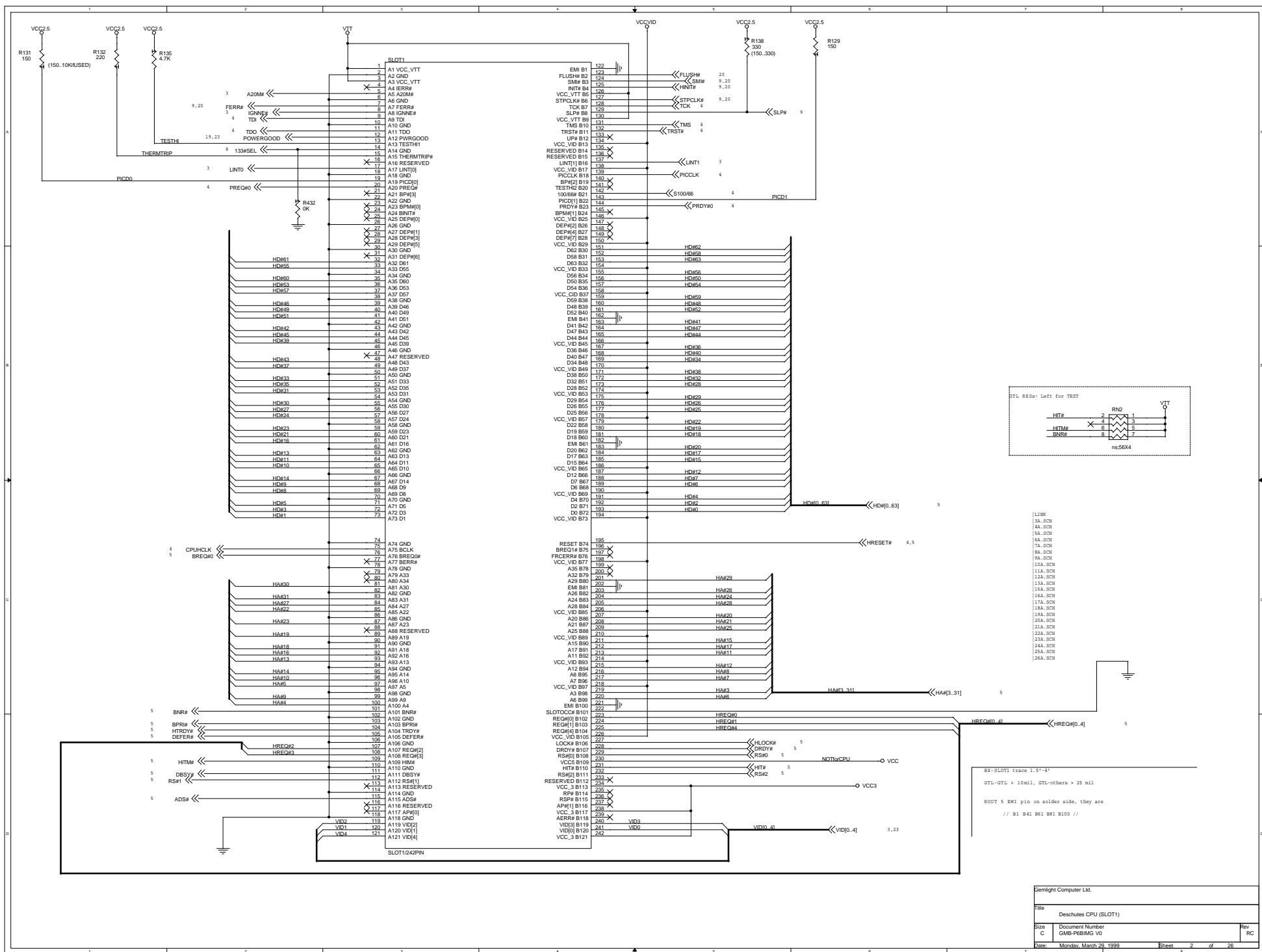


Gemlight Computer Ltd.			
Title: CLOCK GENERATOR & ITP PORT			
Size: C	Document Number: GEM-PBBMG V0	Rev: RC	
Date: Monday, March 29, 1999	Sheet: 4	of: 28	

CPU FREQ	LINT0 INT0/CFG1	IG30B8 CFG2	A20M8 CFG3	LINT1 CFG4	INT1/CFG4
2	-	-	-	-	-
2.5	-	-	-	-	-
3	H	-	-	-	-
3.5	-	H	-	-	-
4	-	-	H	-	-
4.5	-	-	-	H	-
5	H	H	-	-	-
5.5	-	-	H	-	-
6	-	-	-	H	-
6.5	-	-	-	-	H
7	H	-	-	-	-
7.5	-	H	-	-	-
8	-	-	H	-	-
8.5	-	-	-	H	-
9	H	H	H	H	H
Reserved	H	H	H	H	H
2	H	H	H	H	H

PULLUP RES:
IG30B8#330E
150-330E
150-330E
150-330E





- 138K
- 3A.SCH
- 4A.SCH
- 5A.SCH
- 6A.SCH
- 7A.SCH
- 8A.SCH
- 9A.SCH
- 10A.SCH
- 11A.SCH
- 12A.SCH
- 13A.SCH
- 14A.SCH
- 15A.SCH
- 16A.SCH
- 17A.SCH
- 18A.SCH
- 19A.SCH
- 20A.SCH
- 21A.SCH
- 22A.SCH
- 23A.SCH
- 24A.SCH
- 25A.SCH
- 26A.SCH

BX-SLOT1 trace 1.5"-4"
 GTL-OTL > 10mil, OTL-others > 25 mil
 ROUT 5 EMI pin on solder side, they are
 // B1 B41 B61 B81 B100 //

Demlight Computer Ltd.	
Title	Deschutes CPU (SLOT1)
Size	Document Number
C	GMB-PBBMG V0
Date:	Monday, March 29, 1999
Sheet	2 of 28