

# **7NJL3 / 7NJL4**

**AMD Socket A**

**NVIDIA nForce2 400/Ultra 400 + MCP**

**ATX Motherboard**

**User's Guide**

**Version 1.0**



## *Declaration of Conformity*

According to 47 CFR, Parts 2 and 15 of the FCC Rules

The following designated product:

**EQUIPMENT: MAINBOARD**

**MODEL NO.: 7NJL3 / 7NJL4**

is a Class B digital device that complies with 47 CFR Parts 2 and 15 of the FCC Rules. Operation is subject to the following two conditions:

1. This device may not cause harmful interference.
2. This device must accept any interference received, including interference that may cause undesired operation.

This declaration is given to the manufacturer:

**CHAINTECH-EXCEL COMPUTER INC.**

**4427 Enterprise St. Fremont, CA 94538, U.S.A.**

**<http://www.chaintechusa.com>**

**Chaintech President: Simon Ho**

**Signature:**

A handwritten signature in black ink, appearing to be 'S. Ho', written over a horizontal line.

## **Federal Communications Commission Statement**

This device complies with FCC Rules Part 15. Operation is subject to the following two conditions:

- \* This device may not cause harmful interference.
- \* This device must accept any interference received, including interference that may cause undesired operation.

This equipment has been tested and found to comply with the limits for a Class B digital device, pursuant to Part 15 of the FCC Rules. These limits are designed to provide reasonable protection against harmful interference in a residential installation. This equipment generates, uses, and can radiate radio frequency energy. If this equipment is not installed and used in accordance with the manufacturer's instructions, it may cause harmful interference to radio communications. However, there is no guarantee that interference will not occur in a particular installation. If this equipment does cause harmful interference to radio or television reception, which can be determined by turning the equipment off and on, the user is encouraged to try to correct the interference by one or more of the following measures:

- \* Reorient or relocate the receiving antenna.
- \* Increase the separation between the equipment and receiver.
- \* Connect the equipment to an outlet on a circuit different from that to which the receiver is connected.
- \* Consult the dealer or an experienced radio/TV technician for help.

The use of shielded cables for connection of the monitor to the graphics card is required to assure compliance with FCC regulations. Changes or modifications to this unit not expressly approved by the party responsible for compliance could void the user's authority to operate this equipment.

## **Canadian Department of Communications Statement**

This digital apparatus does not exceed the Class B limits for audio noise emissions from digital apparatuses set out in the Radio Interference Regulations of the Canadian Department of Communications.

## **Manufacturer's Disclaimer Statement**

The information in this document is subject to change without notice and does not represent a commitment on the part of the vendor. No warranty or representation, either expressed or implied, is made with respect to the quality, accuracy or fitness for any particular purpose of this document. The manufacturer reserves the right to make changes to the content of this document and/or the products associated with it at any time without obligation to notify any person or organization of such changes. In no event will the manufacturer be liable for direct, indirect, special, incidental or consequential damages arising out of the use or inability to use this product or documentation, even if advised of the possibility of such damages. This document contains materials protected by copyright. All rights are reserved. No part of this manual may be reproduced or transmitted in any form, by any means or for any purpose without expressed written consent of its authors. Product names appearing in this document are mentioned for identification purposes only. All trademarks, product names or brand names appearing in this document are registered property of their respective owners.  
Printed in Taiwan.

100%

May 2003  
OST-CONSUMER  
RECYCLED PAPER



# Contents

<b>CHAPTER 1 INTRODUCTION</b> .....	1
1.1 PRODUCT SPECIFICATIONS .....	1
1.2 PACKAGE CONTENTS.....	2
1.3 7NJL3 MOTHERBOARD LAYOUT.....	3
<b>CHAPTER 2 HARDWARE SETUP</b> .....	4
2.1 INSTALLING A CPU PROCESSOR IN SOCKET A .....	4
2.2 CPU JUMPER CONFIGURATION.....	5
2.3 MAIN MEMORY CONFIGURATION .....	8
2.4 CONNECTOR AND JUMPER REFERENCE CHART.....	9
2.5 CONNECTOR AND JUMPER SETTINGS .....	10
<b>CHAPTER 3 BIOS SETUP PROGRAM</b> .....	19
3.1 STANDARD CMOS SETUP .....	19
3.2 ADVANCED BIOS FEATURES .....	21
3.3 ADVANCED CHIPSET FEATURES .....	23
3.4 INTEGRATED PERIPHERALS .....	25
3.5 POWER MANAGEMENT SETUP.....	28
3.6 PNP/PCI CONFIGURATIONS .....	31
3.7 FREQUENCY/VOLTAGE CONTROL .....	32
3.8 LOAD FAIL-SAFE DEFAULTS .....	34
3.9 LOAD OPTIMIZED DEFAULTS.....	34
3.10 SUPERVISOR PASSWORD & USER PASSWORD SETTING .....	34
3.11 SAVE AND EXIT SETUP .....	35
3.12 EXIT WITHOUT SAVING.....	35
<b>CHAPTER 4 DRIVER SETUP</b> .....	36
4.1 NVIDIA DRIVER PACKAGE SETUP.....	36
4.2 C-MEDIA AUDIO DRIVER SETUP .....	38
4.3 LAN DRIVER SETUP.....	41
4.4 USB 2.0 DRIVER SETUP .....	42
<b>CHAPTER 5 C-MEDIA 3D AUDIO CONFIGURATION</b> .....	43
5.1 SPEAKER OUT .....	43
5.2 S/PDIF .....	47
5.3 VOLUME CONTROL .....	47
5.4 MICROPHONE .....	48
5.5 XEAR 3D .....	48

# Chapter 1 Introduction

## 1.1 Product Specifications

### Processor

- Supports AMD Socket A Duron/Athlon/Athlon XP CPU
- System clock supports 200/266/333/400MHz

### Chipset

- NVIDIA nForce2 400(7NJL3) / Ultra 400(7NJL4) + MCP

### Main Memory

- Three 184 pin DDR DIMMs up to 3GB
- Supports PC2100/2700/3200 Dual-Channel (7NJL4 only) DDR modules

### Expansion Slots

- One universal-AGP slot for both 4X/8X AGP
- Five 32-Bit PCI slots (v2.2 compatible)

### 6-Chanel Audio Subsystem via AC-link

- With external high quality 6-channel AC'97 Codec
- Complete software driver supports for Windows OS

### Ultra DMA-66/100/133 PCI IDE Controller

- Supports two IDE ports up to 4 ATAPI devices
- Supports PIO Mode 4 up to 16.6MBps, Multi Mode 4 up to 66MBps, Multi Word Mode 5 up to 100MBps and Multi Word Mode 6 up to 133MBps with Bus Mastering.
- Bus-Mastering software drivers for all common multi-tasking operating systems

### USB 2.0/1.1 Host Controller

- One EHCI USB 2.0 Controller and 2 OHCI USB 1.1 Controllers
- Support total 6 USB 2.0 Ports (USB1.1 compatible)
- Support USB 2.0 High-Speed Device @480 Mb/s Transfer Rates

### On board Super I/O Controller

- Two UARTs support serial ports
- One SPP/ECP/EPP parallel port
- One floppy disk drive connector supports up to 2.88MB

### Fast Ethernet Controller

- Support 10/100Mb Fast Ethernet

### Boot-Block Flash ROM

- Award system BIOS support PnP, APM, DMI, ACPI, & Multi-device booting features

## 1.2 Package Contents

This product comes with the following components:

1. Motherboard x 1
2. 40-Pin UDMA-100 IDE Cable x 1
3. 34-Pin floppy Disk Drive Cable x 1
4. User's Guide x 1
5. Driver CD x 1



## Chapter 2 Hardware Setup

If your motherboard has already been installed in your computer you may still need to refer to this chapter if you plan to upgrade your system's hardware.

This motherboard is electrostatic sensitive. Do not touch without wearing proper safety gadget and make sure to disconnect the power cable from the power source before performing any work on your motherboard. Not doing so may result in electrical shock!

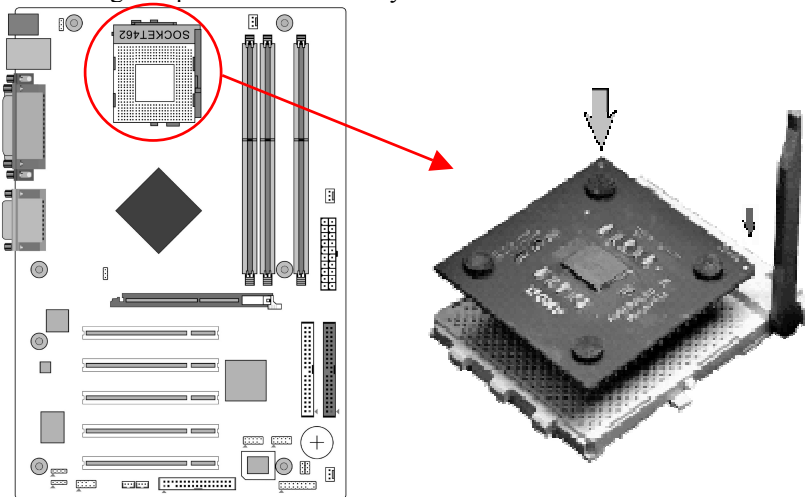
### 2.1 Installing a CPU Processor in Socket A

The Socket A, designed for AMD Duron/Athlon/Athlon XP processors, has been incorporated as a standard motherboard specification. To insert your CPU into Socket A please do the following:

1. Locate a cut edge on the top surface of the CPU, which is close to one of the CPU corners. The same corner will also be cut off, leaving a noticeable notch in the CPU's corner. These markings indicate Pin 1 on the CPU.

2. Pull up the lever of Socket A so that it is perpendicular with the surface of the motherboard. Gently insert the CPU with Pin 1 at the same corner of Socket A, which is located close to the end of the lever. Allow the weight of the CPU to push itself into place. Do not apply extra pressure as doing so may result in damaging your CPU. Snap the lever back into place.

Installing an AMD approved heat sink with cooling fan is necessary for proper heat dissipation from your CPU. Failing to install these items may result in overheating and possible burnout of your CPU.



**Notes:** In order to boot up with a newly installed CPU, AC Power must be switched off before installation.



## 2.2 CPU Jumper Configuration

### Frequency Configuration

If you install a CPU on this motherboard, you must set the [CPU External Clock] JP3 according to your processor (See Section 3.3).

\* **CPU Speed = Multiplier x FSB Frequency**

You do not need to make voltage settings because this board will automatically set your CPU voltage.

### AMD (K7) Duron CPU

Model	CPU Speed	FSB Frequency	Multiplier	Vcore	L2 Cache	Micron process
600	600 MHz	100	6.0	1.6V	64KB	0.18
650	650 MHz	100	6.5	1.6V	64KB	0.18
700	700 MHz	100	7.0	1.6V	64KB	0.18
750	750 MHz	100	7.5	1.6V	64KB	0.18
800	800 MHz	100	8.0	1.6V	64KB	0.18
850	850 MHz	100	8.5	1.6V	64KB	0.18
900	900 MHz	100	9.0	1.6V	64KB	0.18
950	950 MHz	100	9.5	1.6V	64KB	0.18
1.0G	1.0 GHz	100	10.0	1.6V	64KB	0.18
1.1G	1.1 GHz	100	11.0	1.6V	64KB	0.18
1.2G	1.2 GHz	100	12.0	1.6V	64KB	0.18
1.3G	1.3 GHz	100	13.0	1.6V	64KB	0.18

**AMD Athlon CPU (K7/Thunderbird)**

<b>Model</b>	<b>CPU Speed</b>	<b>FSB Frequency</b>	<b>Multiplier</b>	<b>Vcore</b>	<b>L2 Cache</b>	<b>Micron process</b>
700	700MHz	100	7.0	1.70V	256KB	0.18
750	750MHz	100	7.5	1.70V	256KB	0.18
800	800MHz	100	8.0	1.70V	256KB	0.18
850	850MHz	100	8.5	1.70V	256KB	0.18
900	900MHz	100	9.0	1.75V	256KB	0.18
950	950MHz	100	9.5	1.75V	256KB	0.18
1000	1000MHz	100	10.0	1.75V	256KB	0.18
1100	1100MHz	100	11.0	1.75V	256KB	0.18
1200	1200MHz	100	12.0	1.75V	256KB	0.18
1300	1300MHz	100	13.0	1.75V	256KB	0.18
1400	1400MHz	100	14.0	1.75V	256KB	0.18
1000	1000MHz	133	7.5	1.75V	256KB	0.18
1113	1113MHz	133	8.5	1.75V	256KB	0.18
1200	1200MHz	133	9.0	1.75V	256KB	0.18
1333	1333MHz	133	10.0	1.75V	256KB	0.18
1400	1400MHz	133	10.5	1.75V	256KB	0.18

**AMD Athlon XP CPU (Palomino/Thoroughbred)**

<b>Model</b>	<b>CPU Speed</b>	<b>FSB Frequency</b>	<b>Multiplier</b>	<b>Vcore</b>	<b>L2 Cache</b>	<b>Micron process</b>
1500+	1333MHz	133	10.0	1.7V	256KB	0.18
1600+	1400MHz	133	10.5	1.7V	256KB	0.18
1700+	1466MHz	133	11.0	1.7/1.6V	256KB	0.18/0.13
1800+	1533MHz	133	11.5	1.7/1.6V	256KB	0.18/0.13
1900+	1600MHz	133	12.0	1.7/1.6V	256KB	0.18/0.13
2000+	1666MHz	133	12.5	1.7/1.6V	256KB	0.18/0.13
2100+	1733MHz	133	13.0	1.7/1.6V	256KB	0.18/0.13
2200+	1800MHz	133	13.5	1.65V	256KB	0.13
2400+	2000MHz	133	15.0	1.65V	256KB	0.13
2600+	2133MHz	133	16.0	1.65V	256KB	0.13
2600+	2075MHz	166	12.5	1.65V	256KB	0.13
2700+	2167MHz	166	13.0	1.65V	256KB	0.13

**AMD Athlon XP CPU (Barton)**

2500+	1833MHz	166	11.0	1.65V	512KB	0.13
2600+	1917MHz	166	11.5	1.65V	512KB	0.13
2800+	2075MHz	166	12.5	1.65V	512KB	0.13
3000+	2167MHz	166	13.0	1.65V	512KB	0.13
3000+	2100MHz	200	10.5	1.65V	512KB	0.13
3200+	2200MHz	200	11.0	1.65V	512KB	0.13

### 2.3 Main Memory Configuration

The DDR SDRAM memory system consists three banks, each bank supports up to 1GB of memory.



#### DDR SDRAM Specifications

Memory Frequency	Internal System BUS Frequency
133 MHz	266 MHz
166 MHz	333 MHz
200 MHz	400 MHz

DIMM type: 2.5V, unbuffered 184 pin 64/128/256/512-bit DDR SDRAM

Module size: Single/double-sided 64/128/256/512MB/1GB

Parity: Either parity or non-parity

Location	64 MB	128 MB	256 MB	512 MB	1.0 GB
DDR 1	V	V	V	V	V
DDR 2	V	V	V	V	V
DDR 3	V	V	V	V	V

**Note:**

For maximized **Dual-channel (128-bit)** result, you must install one of your **two memory modules on DDR3. (7NJL4 only)**

## 2.4 Connector and Jumper Reference Chart

<b>Jump Connector</b>	<b>Function</b>	<b>Page</b>
PW1	ATX Power Supply Connector	10
CN1A	Front Panel (Power / Rest / SPK...etc.) Connector	11
FD1	Floppy Connector	12
IDE1 / 2	IDE Hard-Disk Connector	13
JP1	CMOS Clear Jumper	13
JP3	CPU Bus Frequency Jumper	14
CN2 / 2A	CD Audio-in Connector	14
JP6	Disable/Enable USB 0/1 Device Power ON Jumper	15
CN23 / 23A	CBOX™2 Front USB Connector	15
CN24	CBOX™2 Front Audio Connector	16
FAN1 / 2 / 3	CPU/ System / Case FAN Connector ( <b>12V</b> )	16
CN5 / 5A	Wake on LAN / Modem Connector	17
JP23	Green LED Mode Jumper	18

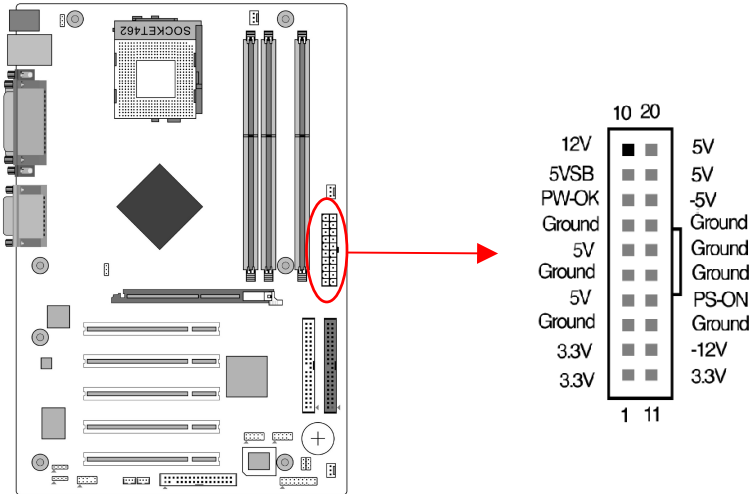
## 2.5 Connector and Jumper Settings

Connectors are used to link the system board with other parts of the system, including the power supply, the keyboard, and the various controllers on the front panel of the system case.

The power supply connector is the last connection to be made while installing a motherboard. Before connecting the power supply, please make sure it is not connected to the power source.

**Note:** All cables are *security-proof*.

### PW1 (ATX Power Supply Connector)



The power cord leading from the system's power supply to the external power source must be the very last part connected when assembling a system. The ATX power supply provides a single 20-pin connector interface, which incorporates standard +/-5V, +/-12V, optional 3.3V and soft-power signals. The soft-power signal, a 5V trickle supply is continuously supplied when AC power is available. When the system is in the Soft-Off mode, this trickle supply maintains the system in its minimum power state.

### Power-On By Modem

While in Soft-Off state, if an external modem ring-up signal occurs, the system wakes up and can be remotely accessed. You may enable this function in BIOS's Power Management Setup menu. (See section 3.5)

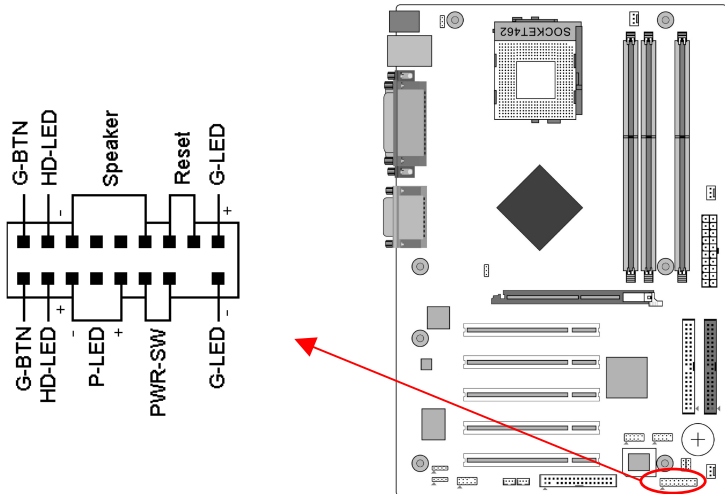
### Blinking LED in Suspend Mode

While in Suspend mode, the LED light on the front panel of your computer will flash. Suspend mode is entered by pressing the Override Power Button, pushing the Green button on your ATX case, or enabling the Power Management and Suspend Mode options in BIOS's Power Management menu. (See section 3.5)

## Poly-fuse Over Current Protection

The poly-fuse protects the system from dangerous voltages that the system might be exposed to via the keyboard or USB connector. In case of such exposure, the poly-fuse will immediately be disconnected from the circuit, just like a normal fuse. After being disconnected for a certain period of time, the poly-fuse will return to its normal state. Then the keyboard or USB connector can function properly again. Unlike conventional fuses, the poly-fuse does not have to be replaced, relieving the user wasted time and inconvenience.

## CN1A (Front Panel Connector) A through F



### A. PWR-SW (Over-ride Power Button Connector)

The power button on the ATX chassis can be used as a normal power switch as well as a device to activate Advanced Power Management Suspend mode. This mode is used for saving electricity when the computer is not in use for long periods of time. The Soft-OFF by PWR-BTN function in BIOS's Power Management Setup menu must be set to **[Delay 4 Sec.]** to activate this function.

When the Soft-OFF by PWR-BTN function is enabled, pushing the power button rapidly will switch the system to Suspend mode. Any occurrence of external activities such as pressing a key on the keyboard or moving the mouse will bring the system back to Full-On. Pushing the button while in Full-On mode for more than **[4 seconds]** will switch the system completely off. See Over-ride Power Button Operation diagram.

### B. P-LED (Power LED Connector)

The power indicator LED shows the system's power status. It is important to

pay attention to the correct cables and pin orientation (i.e., not to reverse the order of these two connectors.)

**C. G-BTN/G-LED (Green Button Switch/LED Connector)**

Some ATX cases provide a Green button switch, which is used to put the system in Suspend mode. In Suspend mode, the power supply to the system is reduced to a trickle, the CPU clock is stopped, and the CPU core is in its minimum power state. The system is woken up whenever the keyboard or mouse is touched. The system resumes in different ways as defined by Power Management Setup screen in BIOS.

**D. RESET (System Reset Switch Connector)**

This connector should be connected to the reset switch on the front panel of the system case. The reset switch allows you to restart the system without turning the power off.

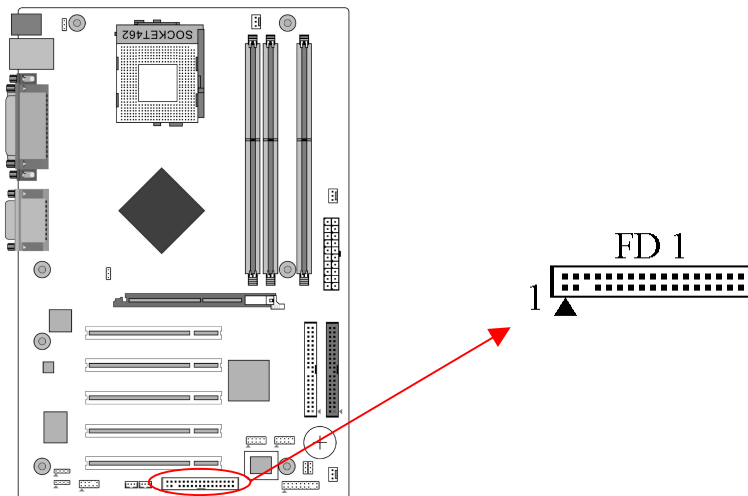
**E. SPEAKER (Speaker Connector)**

This 4-pin connector connects to the case-mounted speaker

**F. HD-LED (IDE Activity LED Connector)**

The IDE activity LED lights up whenever the system reads/writes to the IDE devices.

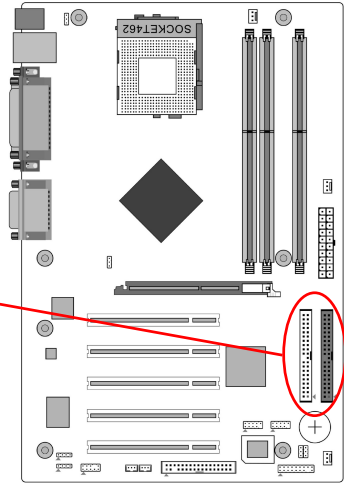
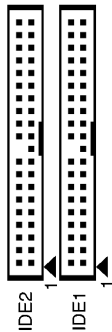
**FD1 (Floppy Disk Connector)**



This connector is used to connect 34 pins of Floppy.



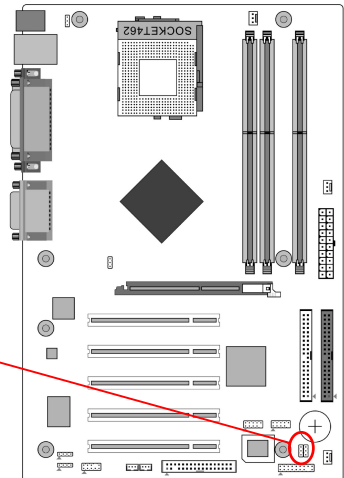
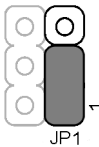
## IDE 1/2 (IDE Hard-Disk Connector)



This connector is used for connecting 40 pins of ATAPI devices.  
 IDE 1 only connects two IDE devices. (**Primary Master/Slave**)  
 IDE 2 only connects two IDE devices. (**Secondary Master/Slave**)

## JP1 (Clear CMOS Data)

Pin	Definition
1-2	Normal (default)
2-3	Clear CMOS Data

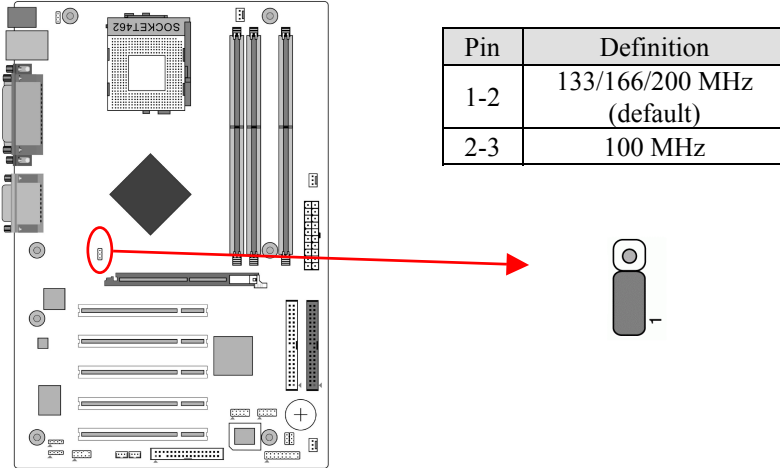


To clear the contents of the CMOS, please follow the steps below.

1. Disconnect the system power supply from the power source.
2. Set the jumper cap at location [2-3] for **<5 seconds>**, and then set it back to the default position.
3. Connect the system's power and then start the system.

4. Enter BIOS's CMOS Setup Utility and choose Load Setup Defaults. Type [Y] and press [enter].
5. Set the system configuration in the Standard CMOS Setup menu.

**JP3 (CPU Bus Frequency)**

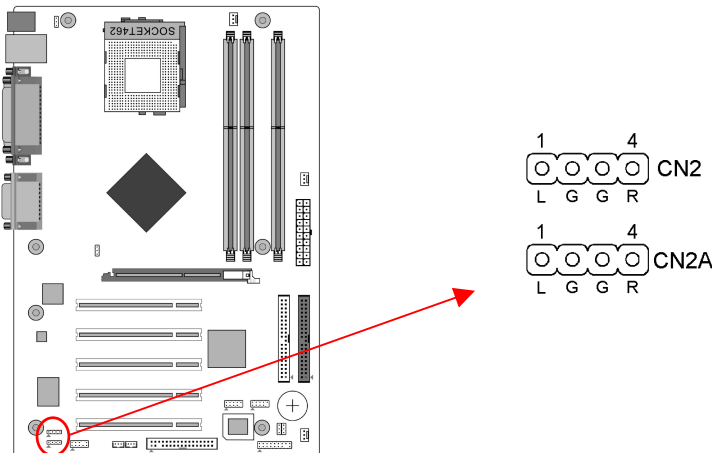


This cap setups up the CPU Ext. Clock Frequency.

**1-2:** The default value is **133/166** MHz (The will allow the CPU's Ext. Frequency and memory frequency to be adjusted through the BIOS.)

**2-3:** Set 100 MHz at CPU Ext. frequency. (The will allow the Memory frequency to be adjusted through the BIOS.)

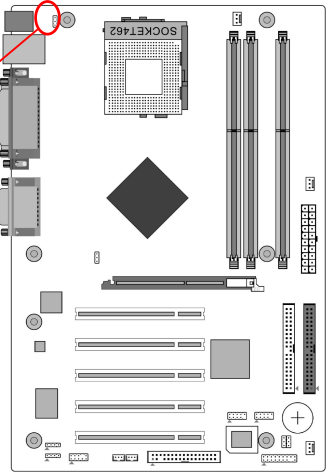
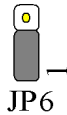
**CN2/CN2A (CD-ROM Audio-in Connector)**



Use the audio cable enclosed with your CD-ROM disk drive to connect the CD-ROM to your motherboard. This will enable your CD-ROM's audio function.

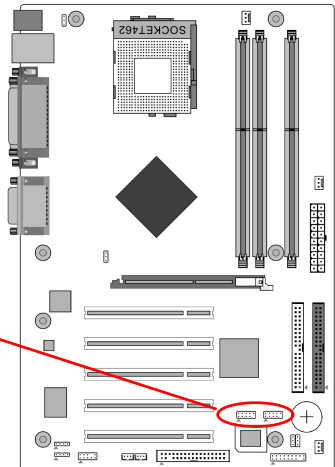
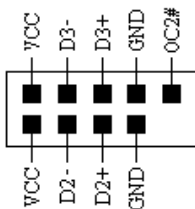
### JP6 (Power On By USB 0/1)

Pin	
1-2	Disable (default)
2-3	Enable



A USB keyboard hot key or a USB mouse click can turn on this board. You must also set this jumper's cap to pins 2-3 to use this function.

### CN23/CN23A (USB 2/3 and 4/5 Connectors)

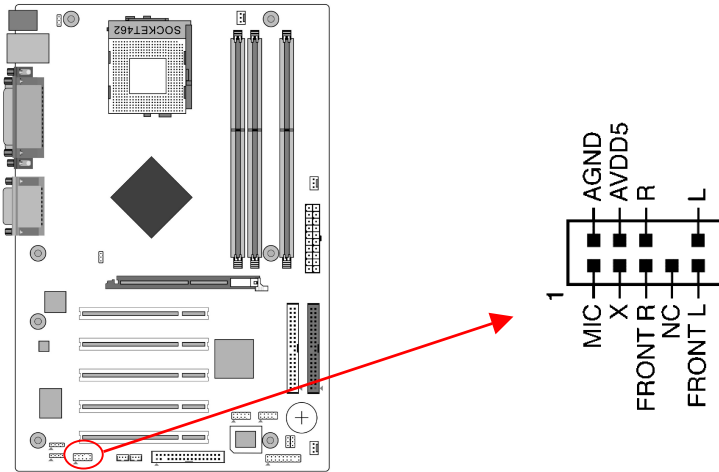


### USB Port 2/3 → CN23, USB Port 4/5 → CN23A

If you want to use a USB Keyboard, you must enable the USB keyboard support function in BIOS's Integrated Peripherals menu (See Section 3.4). This board contains a USB Host controller and includes a root hub with two

connectors for optional USB Adaptor (USB 2/3 and 4/5).

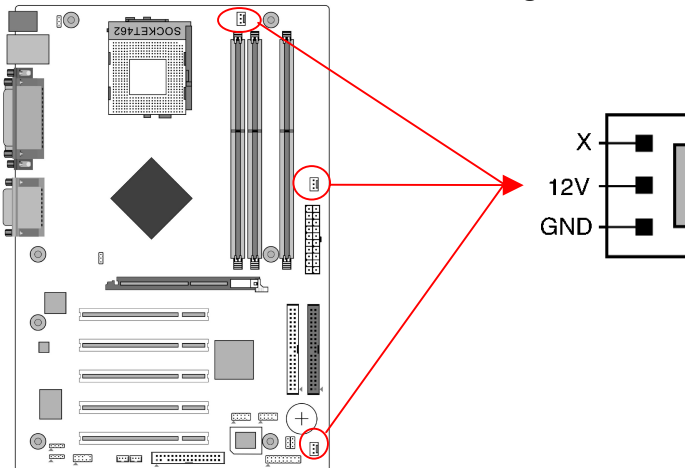
### CN24 (Front Panel Audio Connector)



This connector give you the option of a front panel audio jack cable ext. to be plug into a special custom designed system case.

Simply remove the two jumper caps at pin [5-6] and [9-10] then plug it into the (optional) cable ext. connector. Pin [5-6] and [9-10] are shorted (default) to enable the back panel audio function.

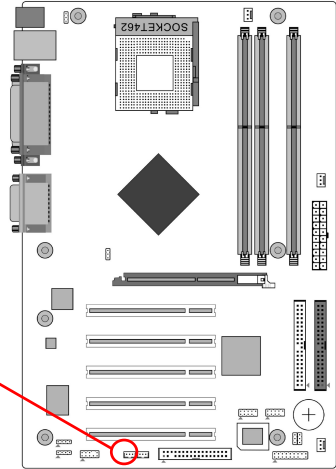
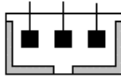
### FAN1/FAN2/FAN3 (CPU/System/Case Cooling Fan Connectors)



The wiring and plug may vary depending on the manufacturer. On standard fans, the red is positive (+12V), and the black is ground.

## CN5 [WOL (Wake-on-LAN) Connector]

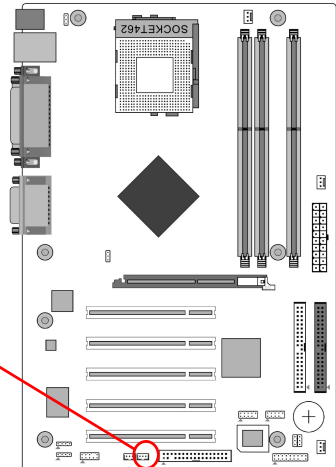
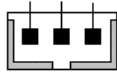
5VSB G Wakeup



Enable the Power On by Ring/WOL selection in BIOS's Power Management Menu to use this function. This header is used to connect an add-in NIC (Network Interface Card) which gives WOL capability to the motherboard.

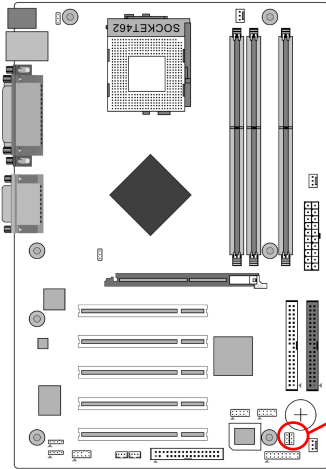
## CN5A [WOM (Wake-on-Modem) Connector]

5VSB G Wakeup

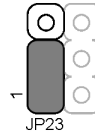


Enable the Power On by Ring/WOL selection in BIOS's Power Management Menu to use this function. This header is used to connect an add-in modem card which gives WOM capability to the motherboard.

## JP23 (Green Mode LED)



Pin	Definition
1-2	Default
2-3	OEM



This cap is to setup Green LED flash mode.

## Chapter 3 BIOS Setup Program

Phoenix-Award BIOS ROM has a built-in setup program that allows users to modify the basic system configuration. This information is stored in CMOS RAM so that it can retain the setup information, even when the power is turned off.

To enter the **Phoenix-Award BIOS** setup program press the **[Delete]** key when you **Power on** or **reboot** the computer system. The primary screen as shown in Figure 3-1 is a list of the menus and functions available in the setup program. Select the desired item by your arrow keys and press enter to make the changes. Operating commands are located at the bottom of this and all other BIOS screens. When a field is highlighted, on-line help information is displayed on the right side of the screen.

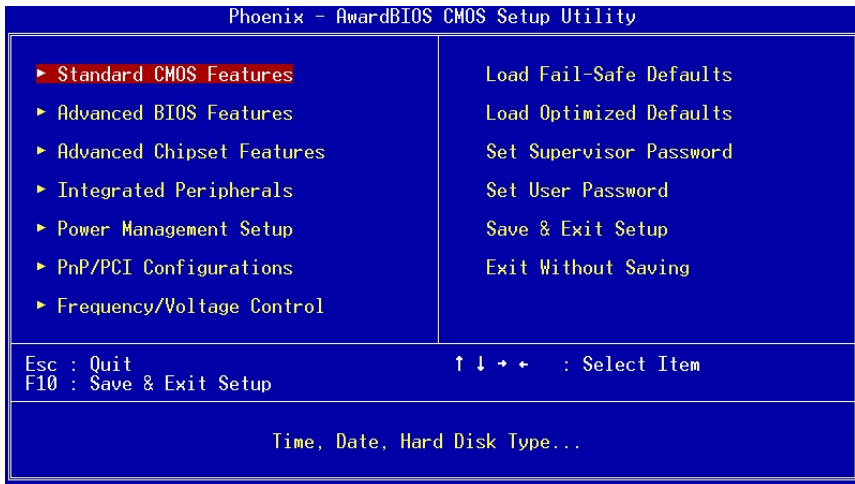
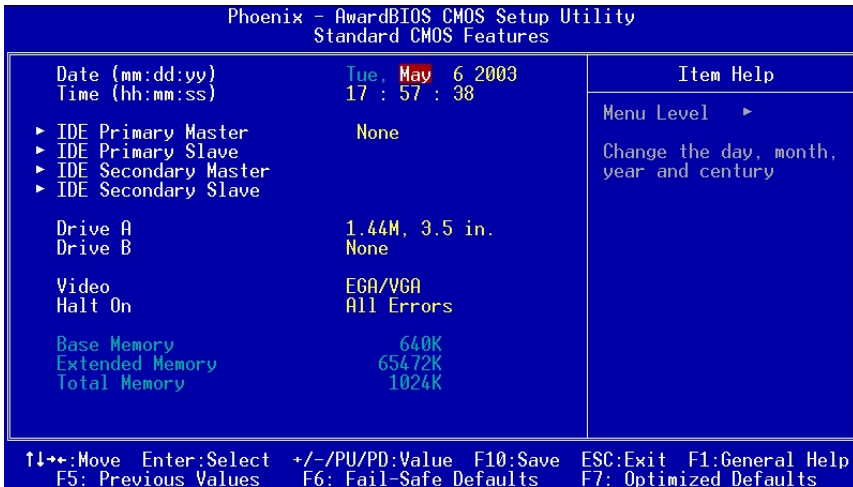


Figure 3-1

### 3.1 Standard CMOS Setup

The Standard CMOS Setup allows users to configure system components such as hard disk drive, floppy disk drive and video display as well as date, time and boot-up error signaling. This configuration menu should be changed when installing a motherboard for the first time, changing hardware in your system such as the HDD, FDD, video display, or when the CMOS data has been lost or

contaminated. Choose the Standard CMOS Setup option from the CMOS Setup Utility menu (Figure 3-1) to display the following screen.



### Date/Time

Set the date and time of the system.

### IDE (Primary/Secondary; Master/Slave)

This category identifies up to four IDE hard disk drives that have been installed in the computer. This section does not show information on other IDE devices such as CD-ROM drives or other hard drive type such as SCSI drives.

### Drive A/B

Select different Floppy device Model. Available options are [None], [360K, 5-1/4 in], [1.2M, 5-1/4 in], [720k, 3-1/2 in], [1.44M, 3-1/2 in], and [2.88M, 3-1/2 in].

### Video

Select the type of video adapter present in your system. You can ignore this setting if you are using a VGA monitor since VGA BIOS automatically configures this setting.

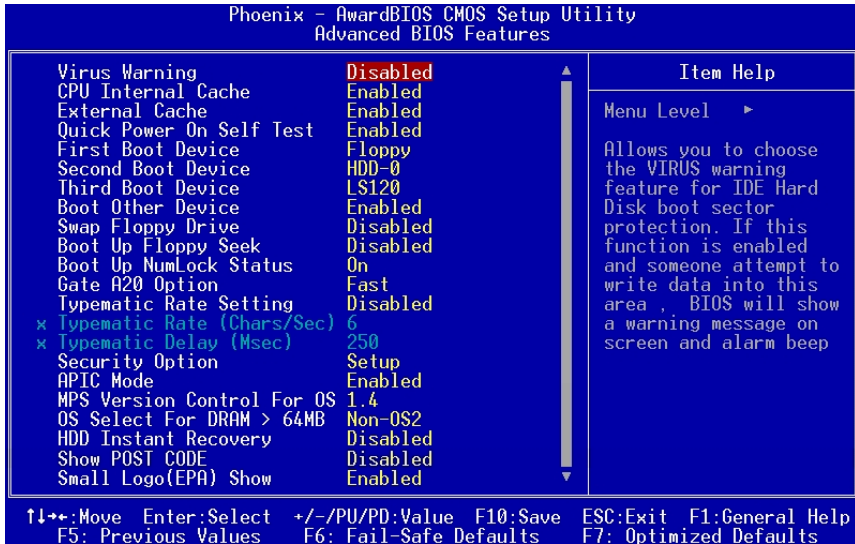
### Halt On

When the system is powered on, BIOS performs a series of diagnostic tests called POST (Power On Self Test). This function stops the computer if BIOS detects a hardware error. You can tell BIOS to halt on all errors, no errors, or not to halt on specific errors.



## 3.2 Advanced BIOS Features

By choosing the Advanced BIOS Features option from the CMOS Setup Utility menu (Figure 3-1), the screen below is displayed. This sample screen contains the manufacturer's default values for the motherboard.



### Virus Warning

When you set as enabled, you receive a warning message if a program (specifically, a virus) attempts to write to the boot sector or the partition table of the hard disk drive.

#### NOTE:

Many disk diagnostic programs that access the boot sector table can trigger the virus-warning message. If you plan to run such a program, we recommend that you first disable the virus warning.

### CPU Internal Cache/External Cache

Cache memory is much faster than conventional DRAM system memory. These fields allow you to enable or disable the CPUs Level 1 built-in cache and Level 2 external cache. Both settings are left enabled to significantly increase the performance of your computer.

### Quick Power On Self Test (POST)

Enable this function to reduce the amount of time required to run the POST (Power On Self Test). BIOS will save time by skipping some items during POST. It is recommended that you disable this setting. Discovering a problem during boot up is better than loosing data during your work.

### **First/Second/Third/Boot Other Device**

This option sets the sequence of drives BIOS attempts to boot from after POST completes. BIOS will search these drives for an operating system.

### **Swap Floppy Drive**

Enabling this function will swap the floppy drive assignment so that drive A will function as drive B, and drive B will function as drive A. Note that the boot sequence assignment mentioned directly above does not include booting from floppy drive B. This function is useful if floppy drives B and A are of a different format and you want to boot from floppy drive B.

### **Boot Up Floppy Seek**

This is a set up check for floppy power-on after starting the computer system.

### **Boot Up NumLock Status**

This function defines the keyboard's number pad as number keys or arrow keys. If it is set at on the number keys will be activated, if it is set at off the arrow keys will be activated.

### **Gate A20 Option**

This allows you to set the Gate A20 status. When set to [**Fast**], Gate A20 is controlled by chipset. When set to [**Normal**], Gate A20 is controlled by a specific pin from the keyboard controller. Available options are [**Fast**] and [**Normal**].

### **Keyboard Interface:**

#### **Typematic Rate Setting**

When enabled, you can set the following two-typematic control items. When disabled, the keyboard controller determines keystrokes arbitrarily in your system.

#### **Typematic Rate (Chars/Sec)**

The typematic rate sets the rate at which characters on the screen repeat when a key is pressed and held down.

#### **Typematic Delay (Msec)**

The typematic delay sets how long after you press a key that a character begins repeating.

### **Security Option**

The Supervisor and/or User Password functions shown in Figure 3-1 must be set to take advantage of this function. See Section 3.11 for password setting information. When the Security Option is set to System, a password must be entered to boot the system or enter the BIOS setup program. When the Security Option is set to Setup, a password is required to enter the BIOS setup program.

### **APIC Mode**

This item can enable or disable the APIC (**Advanced Programmable Interrupt Controller**). Due to compliance to PC2001 design guide, the system

is able to run in APIC mode. Enabling APIC mode will expand available IRQs resources for the system. Available options are [**Enabled**] and [**Disabled**].

### MPS Version Control OS

This item allows you to select which MPS (**Multi-Processor Specification**) version to be used for the operating system. You need to select the MPS version which is supported by your operating system. To find out which version to use, consult the vendor of your operating system. Available options are [**1.4**] and [**1.1**].

### OS Select For DRAM > 64MB

If your system's DRAM is larger than 64MB and you are running OS/2, select OS/2 as the item value. Otherwise, set the item value to Non-OS/2 for all other operating systems.

### HDD Instant Recover

This board supports HDD Instant Recover, Select enabled to use the function. Upon system boot up, the HDD Instant Recover Utility will be shown on the screen. Select enable or disable to continue booting. Available options are [**Disabled**] and [**Enabled**].

### Show POST CODE

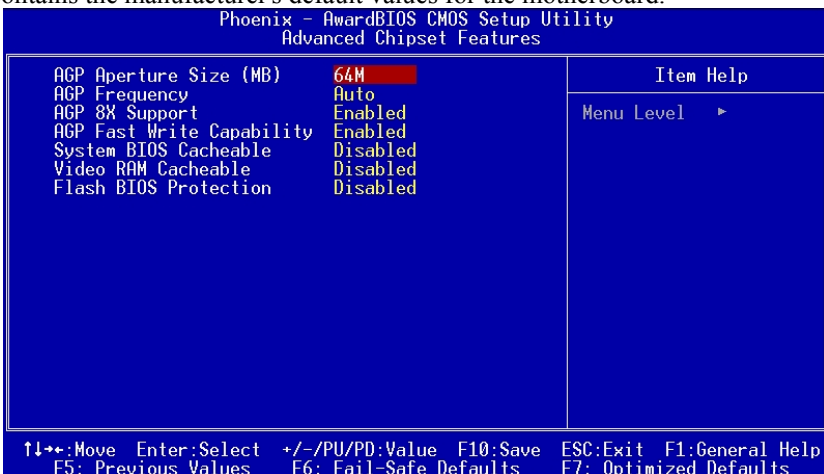
Enabling this function can show POST error code on the screen before proceeding to system's operating system.

### Small Logo(EPA) Show

This setup allows photo that is EPA. Logo.

## 3.3 Advanced Chipset Features

By choosing the [**Advanced Chipset Features**] option from the CMOS Setup Utility menu (Figure 3-1), the screen below is displayed. This sample screen contains the manufacturer's default values for the motherboard.



All of the above settings have been determined by the motherboard manufacturer and should not be changed unless you are absolutely sure of what you are doing. Explanation of the DRAM timing and chipset features setup is lengthy, highly technical and beyond the scope of this manual. Below are some abbreviated descriptions of the functions in this setup menu.

### **AGP Aperture Size (MB)**

This function determines the amount of system memory that is given to the AGP card. Options range from **32MB** to **512MB**. This is a dynamic memory allotment in that the AGP card will only use the amount of memory that it needs. The remaining memory, which is not in use, will be available for the system. For example, if 16MB is allotted to the AGP card and the card only needs 8MB, the remaining 8MB will be available for system use.

### **AGP Frequency**

This function determines the amount of AGP frequency that is given to the AGP card. Options range from **50 MHz** to **100 MHz**. (default [**Auto (66MHz)**])

### **AGP 8X Support**

Enable this setting to utilize the 8X mode (twice as fast as 4X) offered by advanced AGP cards. Your VGA card must support 8X mode in order to take advantage of the faster speed.

### **AGP Fast Write Capability**

Selecting [**Enabled**] to allow Fast Write Protocol for 8x/4x AGP to function.

*PS: Not all AGP cards support fast write.*

### **System BIOS Cacheable**

Enabling this function allows caching of the system BIOS ROM at F0000h-FFFFFh, resulting in better system performance. However, if any program writes to this memory area, a system error may result. Caching the system BIOS results in better performance than shadowing the system BIOS.

### **Video RAM Cacheable**

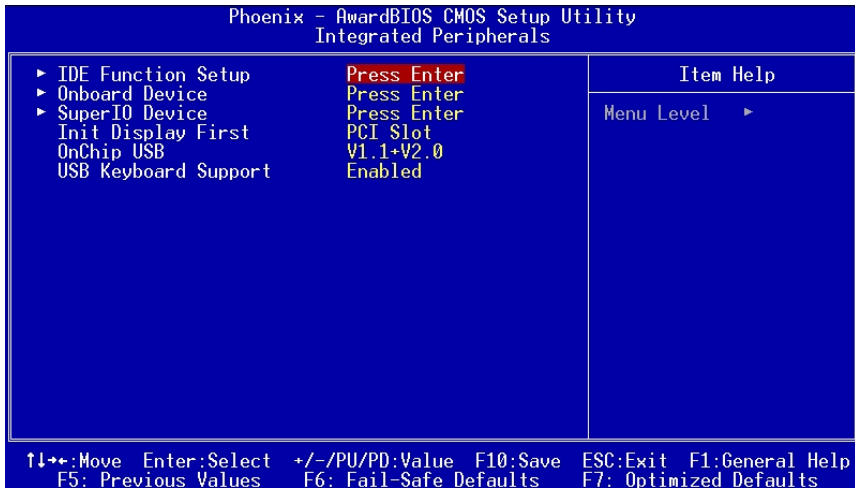
Enabling this function will allow caching of the video RAM, resulting in better system performance. However, if any programs write to this memory area, a system error may occur.

### **Flash BIOS Protection**

The motherboard manufacturer developed BIOS protection technology that protects the System BIOS from accidental corruption by unauthorized users or computer viruses. When enabled, the BIOS data cannot be changed when attempting to update BIOS with the FLASH utility. When disabled, the BIOS data can be updated by using the FLASH utility.

### 3.4 Integrated Peripherals

This section provides information on setting peripheral devices. By choosing the Integrated Peripherals option from the CMOS Setup Utility menu (Figure 3-1), the screen below is displayed. This sample screen contains the manufacturer's default values for the motherboard.



#### IDE Function Setup:

Press [Enter] to enter the sub-menu, which contains the following items for advanced control:

##### OnChip IDE Channel 0/1

You can set this to disable the On Chip IDE controller if you are going to add a higher performance IDE board.

##### Primary/Secondary Master/Slave PIO

The four IDE PIO (programmed Input/Output) fields let you set a PIO mode (0-4) for each IDE device that the internal PCI IDE interface supports. Modes 0 through 4 provide successively increased performance. In Auto mode, the system automatically determines the best mode for each device.

##### Primary/Secondary Master/Slave UDMA

Ultra DMA implementation is possible only if your IDE device supports it and your operating environment contains a DMA driver. If both your hard drive and software support Ultra DMA, select [Auto] to enable BIOS support.

##### IDE Prefetch Mode

The onboard IDE drive interfaces support s prefetching, for faster drive accesses. Set to [Disabled] if this primary or secondary

### **IDE HDD Block Mode**

Block mode is also called block transfer, multiple commands, or multiple sector read/write. If your IDE hard drive supports block mode, select Enabled to auto-detect the optimal number of block read/writes per sector the drive can support.

### **Onboard Device:**

This section provides information for setting onboard device. By choosing the Integrated Peripherals option from the CMOS Setup Utility menu (Figure 3-5), the screen below is displayed. This sample screen contains the manufacturer's default values for the motherboard.

Press [**Enter**] to enter the sub-menu, which contains the following items for advanced control:

#### **AC97 Audio**

This feature allows you to enable/disable the on-board AC97 audio function.

#### **MC97 Modem**

This item allows you to enable/disable the MCP chipset's feature to support MC97 Modem.

#### **Onboard Lan Boot ROM**

Decide whether to invoke the boot ROM of the onboard LAN chip.

### **Super IO Device:**

This section provides information on setting Super I/O device. By choosing the Integrated Peripherals option from the CMOS Setup Utility menu, the screen below is displayed. This sample screen contains the manufacturer's default values for the motherboard.

Press [**Enter**] to enter the sub-menu, which contains the following items for advanced control:

#### **Onboard FDC Controller**

Select Enabled if your system has a floppy disk controller (FDC) installed on the system board and you wish to use it. If you install an add-in FDC or the system has no floppy drive, select Disabled in this field.

#### **Onboard Serial Port 1/2**

Select an address and corresponding interrupt for the first and second serial ports. Available options are [**3F8/IRQ4**], [**2E8/IRQ3**], [**3E8/IRQ4**], [**2F8/IRQ3**], [**Disabled**], and [**Auto**].

#### **Onboard Parallel Port**

Select a logical LPT port address and corresponding interrupt for the physical parallel port.

#### **Parallel Port Mode**

Select an operating mode for the onboard parallel (printer) port. Select SPP

---

unless you are certain your hardware and software support one of the other available modes.

**ECP Mode Use DMA**

This item automatically specifies a DMA channel **1** or **3** for the parallel port when it is set to [**ECP**] or [**ECP+EPP**] mode.

**Game Port Address**

This item disables or assigns the address of the Game port. Available options are [**201**] and [**209**].

**Midi Port Address**

This item disables or assigns the address of the Midi port. Available options are [**300**] and [**330**].

**Midi Port IRQ**

This item specifies an IRQ for the Midi port.

**Init Display First**

This function allows user to choose between [**Onboard / AGP**] or [**PCI Slot**] to initialize Display first.

**OnChip USB**

Enable the on-board Universal Serial Bus (USB V1.1 or V2.0) controller if you want to connect a USB device to your system. Note that if this setting is disabled, you can still temporarily use a USB keyboard during boot up so that you can enter BIOS and enable this setting. If you pass the boot up stage without enabling this function, your PS/2 keyboard will no longer work.

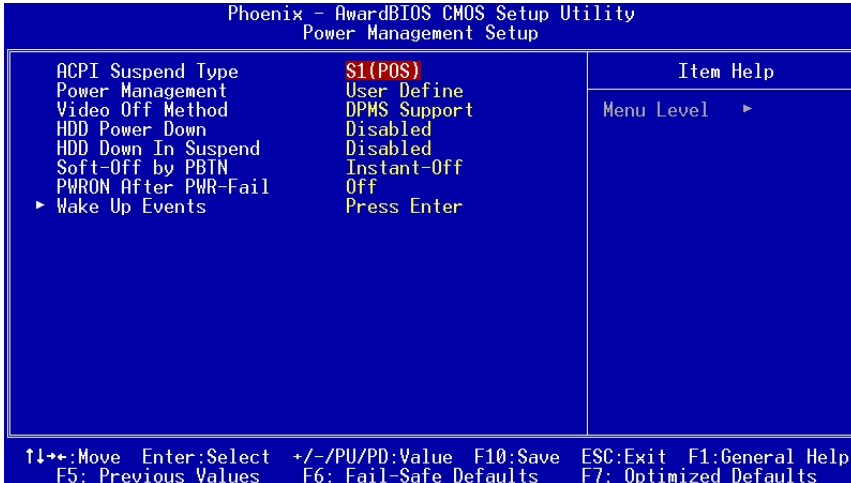
Available options are [**Disabled**], [**V1.1+V2.0**], and [**V1.1**].

**USB Keyboard Support**

Select Enabled if your system has a USB keyboard installed on the system board. If your system has no USB keyboard, select Disabled in this field.

## 3.5 Power Management Setup

This section provides information on the Green PC power management functions. By choosing the Power Management Setup option from the CMOS Setup Utility menu (Figure 3-1), the screen below is displayed. This sample screen contains the manufacturer's default values for the motherboard



### ACPI Suspend Type

This item specifies the power saving modes for ACPI function. Available options are:

#### S1 (POS)

The S1 state is low power state. In this state, no system context (CPU or Chipset) is lost and the hardware maintains all system contexts.

#### S3 (STR)

The S3 state is a lower power state, where the information of system configuration and opened applications / files are saved to main memory. The remaining power of other hardware components are turn off to save energy.

#### S1 & S3

If S3 state is supported by the system, by default [S3] is automatically selected. Otherwise [S1] is selected.

The information stored in memory will be used to restore the system when a [wake up] event occurs.

### Power Management

Power management allows the computer to save electricity when it is not in use by entering increasingly deep power saving modes.



---

## Video Off Method

This function serves as both a screen saver and power saver for monitors. See the next function, Video Off After, for setting the video timer.

**Blank Screen** - BIOS will only blank the monitor's screen. The electricity saved in this mode is negligible and this function is only used as a screen saver to prevent screen damage while the screen is on but not in use.

**V/H SYNC+Blank** - The system turns off the vertical and horizontal synchronization ports, writes blanks to the VGA buffer and the monitor's electron gun turns off. This function requires a monitor with Green features in order to take advantage of the power saving function. If you enable this function and do not have a Green monitor, the result will be the same as if you had selected Blank. This function serves as both a screen saver and a power saver.

**DPMS Support** - Select this option if your video card supports the Display Power Management Signaling (DPMS) standard (i.e., you have a monitor that supports Green features). Use software supplied by your video subsystem to set video power management options.

## HDD Power Down

Shuts down any IDE hard disk drives in the system after a period of inactivity as set in this user configurable field. This feature does not affect SCSI hard drives.

## HDD Down In Suspend

In Suspend any IDE hard disk drives in the system after a period of inactivity as set in this user configurable field. This feature does not affect SCSI hard drives.

## Soft-Off by PBTN

When set to Delay 4 Sec., this function allows the power button to put the system in Suspend, a power saving mode. When set to Instant-Off the Soft-Off by PWR-BTN function is disabled and the computer turns completely off when the power button is pressed.

## PWRON After PWR-Fail

This allows you to set whether you want your system to reboot after the power has been interrupted. [**Off**] leaves your system off and [**On**] reboots your system. [**Former-Sts**] sets your system back to the state it is before the power interruption.

Configuration option: [**Off**], [**On**], [**Former-Sts**]

## Wake up Events

### Power On by PME/OnBoard LAN

When enabled, the nVidia LAN, which is on Board, will be able to receive a signal and wake up the system from soft off and suspend mode. You should connect the LAN to the RJ45 port and turn on the resume event in suspend

mode.

### **Power On by Ring/WOL/WOM**

When enabled, a Modem/LAN Card (**PCI Card or Ext. Modem**) will be able to receive a signal and wake up the system from soft off and green mode. You should connect the modem to the COM port and call your PC to power on.

### **USB Resume from S3**

Allows the activity of USB device to wake up the system from S3 power saving modes. Settings are [**Enabled**] and [**Disabled**].

### **Power-On by Alarm**

When enabled, this setting allows the system to turn back on at a designated time of the month. User must designate date of month and time of day.

This function is only available when using an ATX power supply and the Software Power-Off function to turn off the computer.

### **POWER ON Function**

This control show the PS/2 mouse or keyboard can power on the system.

Available settings are [**Password**], [**Hot KEY**], [**Mouse Move**], [**Mouse Click**], [**Any KEY**], [**BUTTON ONLY**] and [**Keyboard 98**].

### **KB Power ON Password**

If POWER ON Function is set to [**Password**], then you can set a password in the field for the PS/2 keyboard to power on the system.

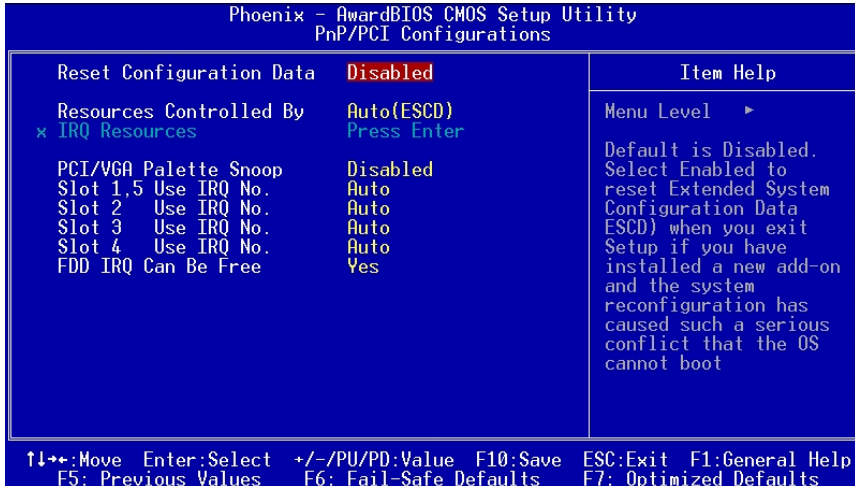
### **Hot Key Power ON**

If POWER ON Function is set to [**Hot KEY**], you can assign a hot key combination in the field for the PS/2 keyboard to power on the system.

Settings: [**Ctrl-F1**] through [**Ctrl-F12**].

### 3.6 PNP/PCI Configurations

This section provides IRQ and DMA setting information. By choosing the PNP/PCI Configuration option from the CMOS Setup Utility menu (Figure 3-1), the screen below is displayed. This screen contains the manufacturer's default values for the motherboard.



#### Reset Configuration Data

If you want to reset CMOS IRQ divide hardware device, please selected to **[Enabled]**.

#### Resources Controlled By

When set to Manual the system BIOS will not refer to the ESCD for IRQ & DMA information. Instead, it will refer to the items in the setup menu for assigning IRQ & DMA. When set to Auto the system BIOS will refer to the ESCD for all legacy information.

ESCD (**Extended System Configuration Data**) provides a detailed format of the configuration data structures stored in flash memory. Each data structure defines the resources used by a device or a card in the system. This includes legacy and PCI/ISA PnP devices.

#### PCI/VGA Palette Snoop

When set to **[Enabled]**, multiple VGA devices operating on different buses can handle data from the CPU on each set of palette registers on every video device. Bit 5 of the command register in the PCI device configuration space is the VGA Palette Snoop bit (0 is disabled). Available options are **[Enabled]** and **[Disabled]**.

#### Slot 1,5/2/3/4 Use IRQ No.

These Field automatically assign the IRQ for each PCI slot. The default setting

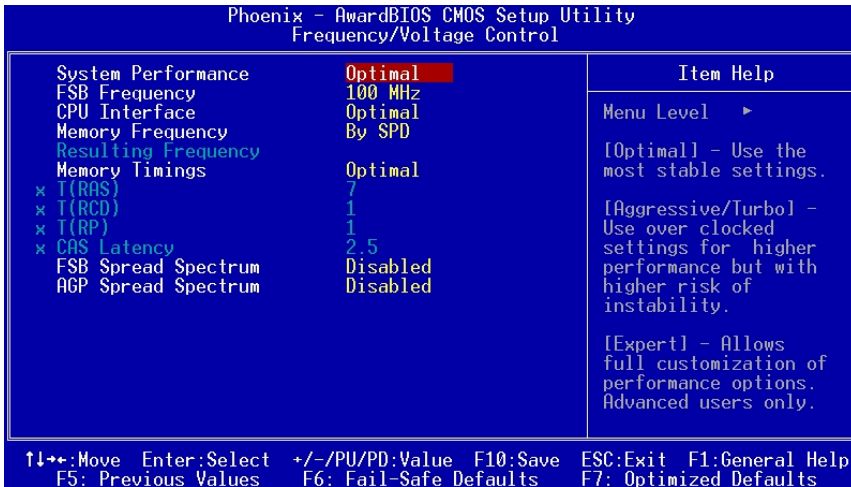
for each field is [Auto], which utilizes auto-routing to determine IRQ assignments. Configuration IRQ option: [Auto], [3], [4], [5], [7], [9], [10], [11], [12], [14] and [15].

### FDD IRQ Can Be Free

This function allows user to choose if the FDD IRQ can be freed up. The default setting is **Yes** and this does not allow the IRQ to be free.

## 3.7 Frequency/Voltage Control

By choosing the Frequency/Voltage Control option from the CMOS Setup Utility menu (Figure 3-1), the screen below is displayed. This sample screen contains the manufacturer's default values for the motherboard.



### System Performance

**Optimal:** Select this option will let the system automatically detect its performance.

**Aggressive:** Select this option for better system performance. It increases a bit of the system performance.

**Turbo:** Select this option for a faster system performance. It will increase the system performance, but it might result in an unstable system.

**Expert:** Select this option only if you are a professional user. This will allow you to set the system performance according to your choice.

### FSB Frequency

This feature allows the system and memory to run at FSB clock speed. Options include **100 MHz (200 MHz) to 250 MHz (500 MHz)**.

### CPU Interface

**Optimal:** Select this option will let the system automatically detect its

performance.

**Aggressive:** Select this option for better system performance. It increases a bit of the system performance.

**Turbo:** Select this option for a faster system performance. It will increase the system performance, but it might result in an unstable system.

**Expert:** Select this option only if you are a professional user. This will allow you to set the system performance according to your choice.

### Memory Frequency

**By SPD:** It automatically detects the memory frequency.

<p><b>WARNING</b> <i>Overclocking:</i> This motherboard is designed to support overclocking. However, please make sure your components are able to tolerate such abnormal setting, while doing overclocking. Any attempt to operate beyond product specifications is not recommended. <b>We do not guarantee the damages or risks caused by inadequate operation or beyond product specifications.</b></p>
--

### Memory Timing

The function allows you to enable or disable the DRAM timing by SPD. When it is set to Manual, you can select the DRAM CAS Latency, DDR SDRAM Cycle Length and Bank Interleave configuration.

### FSB/AGP Spread Regulator

This item is used to enable or disable the clock generator's Spread Spectrum feature. When over clocking the processor, always set it to *Disabled*. Setting options: [0.5%], [1.00%], and [Disabled].

<p><b>WARNING</b> <i>Overclocking</i> <i>This motherboard is designed to support overclocking. However, please make sure your components are able to tolerate such abnormal setting, while doing overclocking. Any attempt to operate beyond product specifications is not recommended. We do not guarantee the damages or risks caused by inadequate operation or beyond product specifications.</i></p>
---

### 3.8 Load Fail-Safe Defaults

Load Fail-Safe Defaults loads the default BIOS values directly from the CMOS Setup Utility menu (Figure3-1). If the stored record created by the setup program becomes corrupted and therefore unusable, these defaults will be loaded automatically when you turn on the computer.



Load Fail-Safe Defaults (Y/N)? N

### 3.9 Load Optimized Defaults

Load Optimized Defaults loads the default system values directly from the CMOS Setup Utility menu (Figure3-1). If the stored record created by the setup program becomes corrupted and therefore unusable, these defaults will be loaded automatically when you turn on the computer.



Load Optimized Defaults (Y/N)? N

### 3.10 Supervisor Password & User Password Setting

There are four different variables that control password settings. The first two are located under the Security Option function in BIOS Features Setup Menu (Figure 3-1). When the Security Option function is set to **Setup**, a password is required to enter BIOS and change BIOS settings. When the Security Option function is set to **System**, a password is required to enter both BIOS and the computer's operating system (for example Windows 98) found on the boot drive.

The third and fourth variables are user password and supervisor password selected in BIOS (Figure 3-1). The main purpose of separating user and supervisor is to allow only the supervisor to have control over the settings in BIOS. The user, on the other hand, is only allowed to access the computer's operating system and change the user password in BIOS.

*Note: that when there is no supervisor password set, the user password controls access to all BIOS settings.*



Enter Password:

---

### 3.11 Save and Exit Setup

If you select this and type **[Y]** (for Yes) followed by the **[Enter]** key, the values entered in the setup utilities will be recorded in the CMOS memory of the BIOS chip.



SAVE to CMOS and EXIT (Y/N)? **Y**

### 3.12 Exit Without Saving

Selecting this option and pressing **Y** followed by the **[Enter]** key lets you exit the Setup program without recording any new values or changing old ones.



Quit Without Saving (Y/N)? **N**

## Chapter 4 DRIVER Setup

Please, insert nVidia Series CD to CD-ROM.

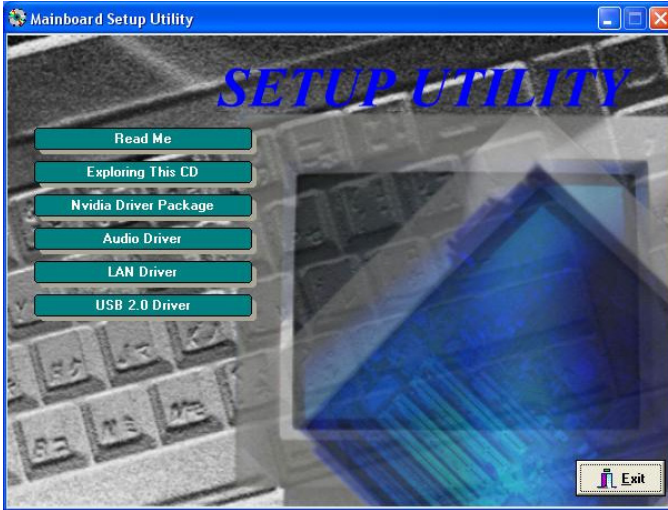


Figure 4-1

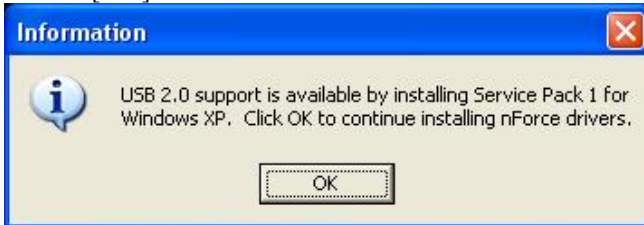
### 4.1 Nvidia Driver Package Setup

1. Please select [Nvidia Driver Package].
2. Please select [NEXT >] to continue.





3. Please select [**OK**] to continue.



4. Please select [**Finish**] to restart your computer.



## 4.2 C-MEDIA Audio Driver Setup

This section provides information on installed audio devices by choosing [Audio Driver] from the Setup Driver menu. (Figure 4 - 1)

1. Please select [Next >] to install Device Driver and Play3D Demo Program.



2. Please select [Next >] to continue.



3. Please select [Next >] to continue.



4. Please select [Next >] to continue.



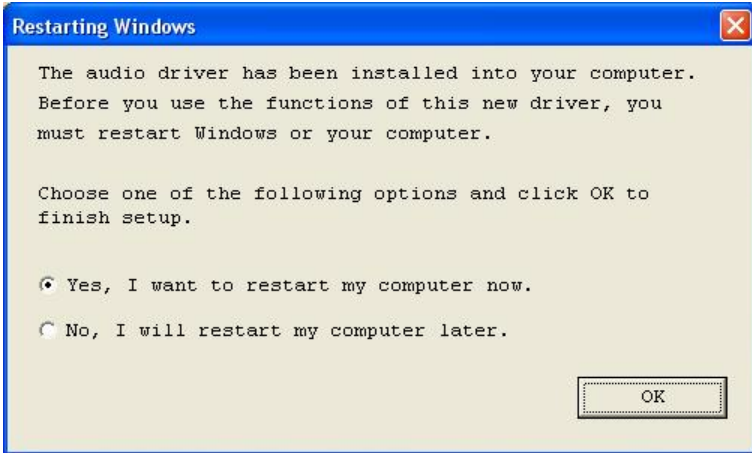
5. Please select [**N**ext >] to continue.



6. Please select [**C**ontinue Anyway] to continue.



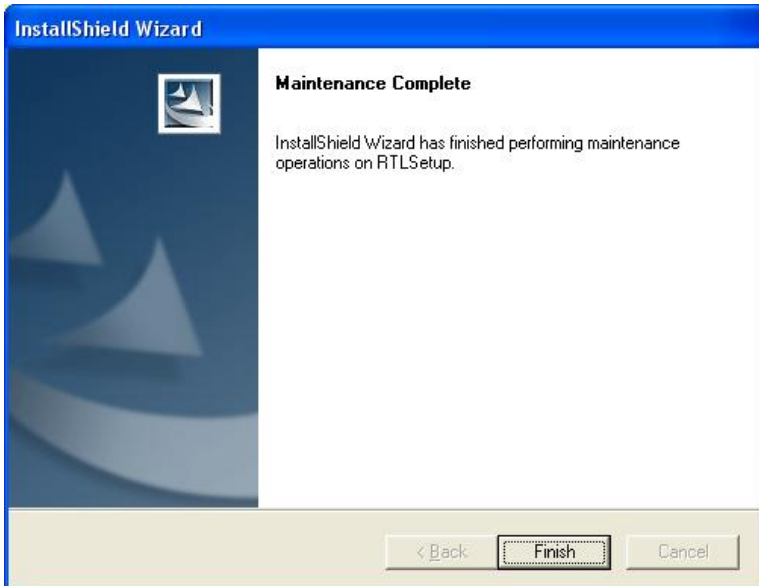
7. Please select [**OK**] to finish setup.



### 4.3 LAN Driver Setup

This section provides information on installed LAN devices by choosing [**LAN Driver**] from the Setup Driver menu. (Figure 4 - 1)

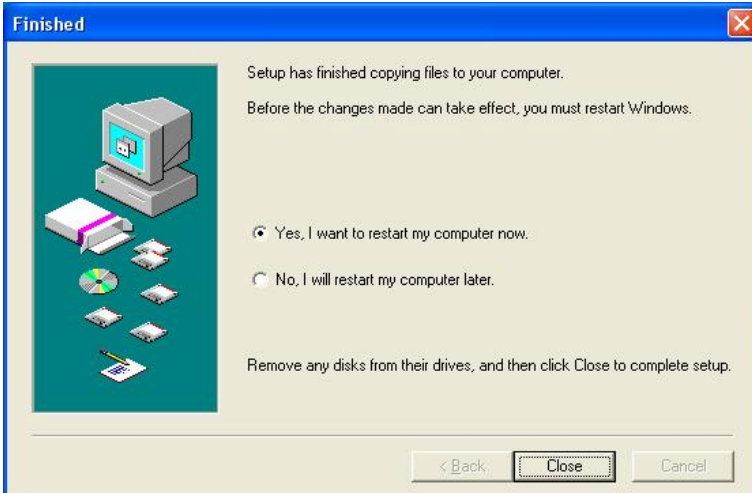
1. Please select [**Finish**] to complete.



## 4.4 USB 2.0 Driver Setup

This section provides information on installed LAN devices by choosing [USB 2.0 Driver] from the Setup Driver menu. (Figure 4 - 1)

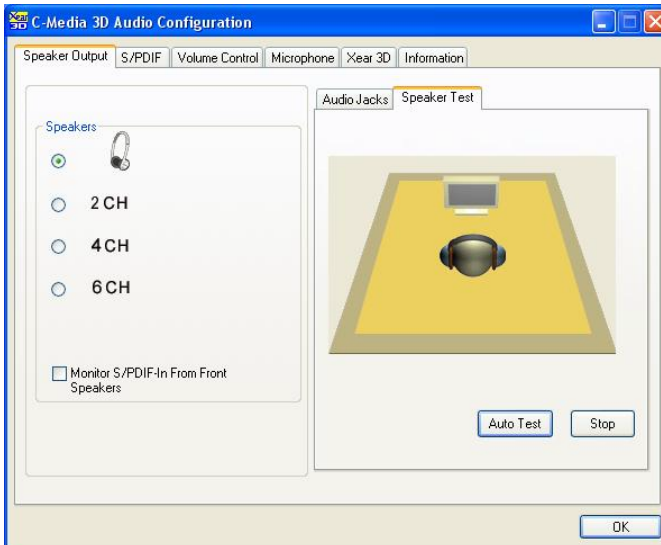
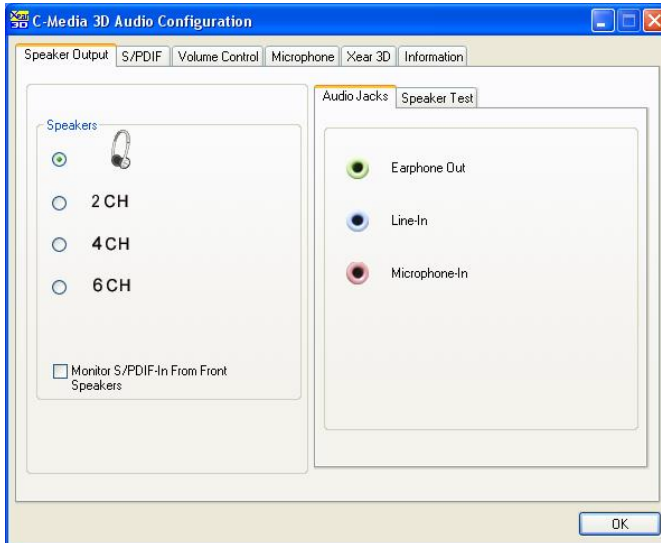
1. Please select [Close] to restart Windows.



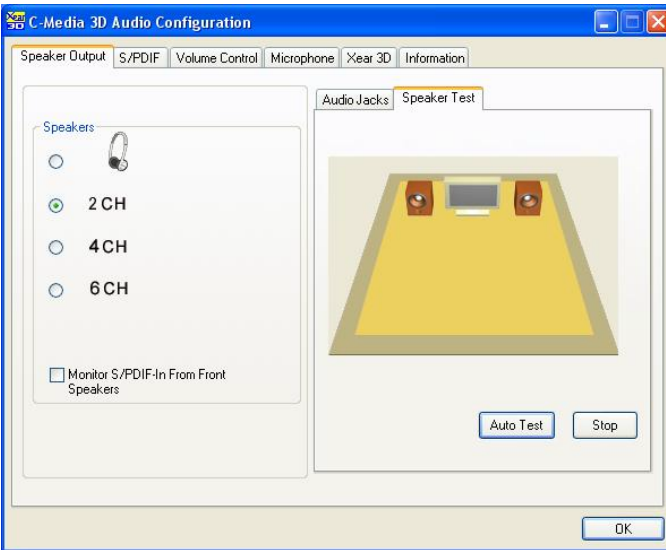
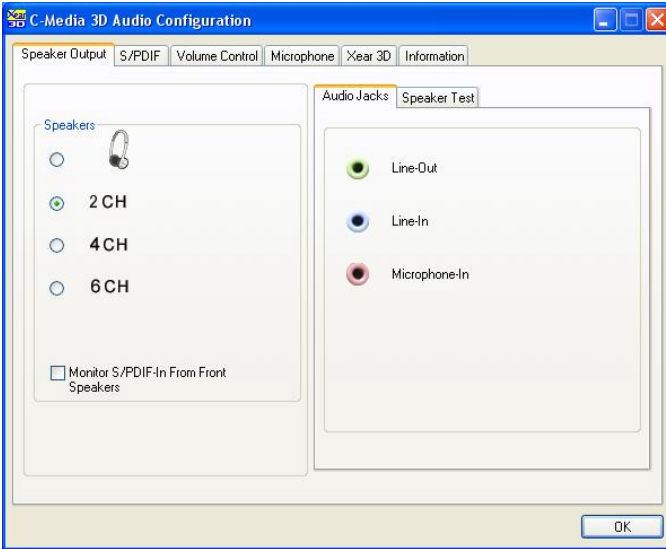
## Chapter 5 C-Media 3D Audio Configuration

### 5.1 Speaker Out

#### 1. Earphone

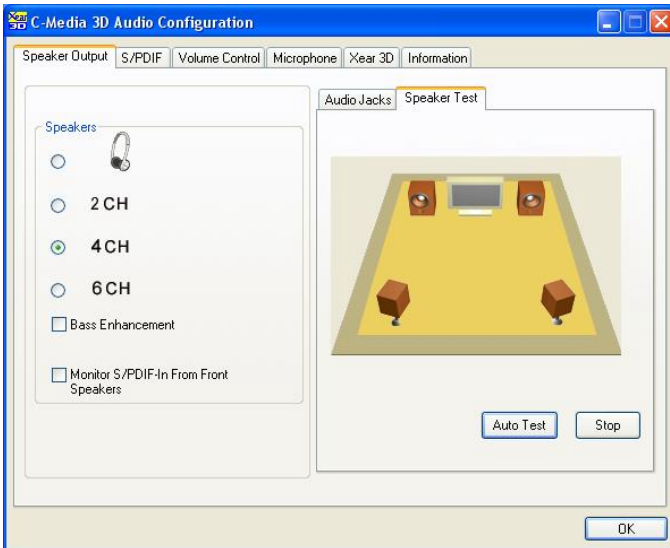
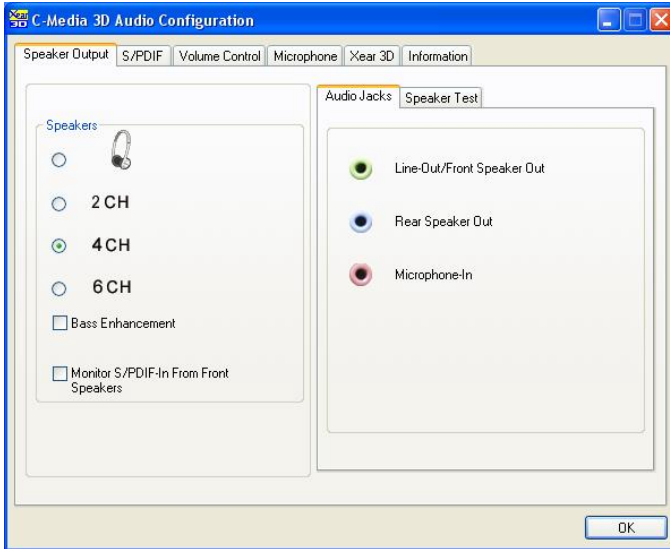


2. Two Channel

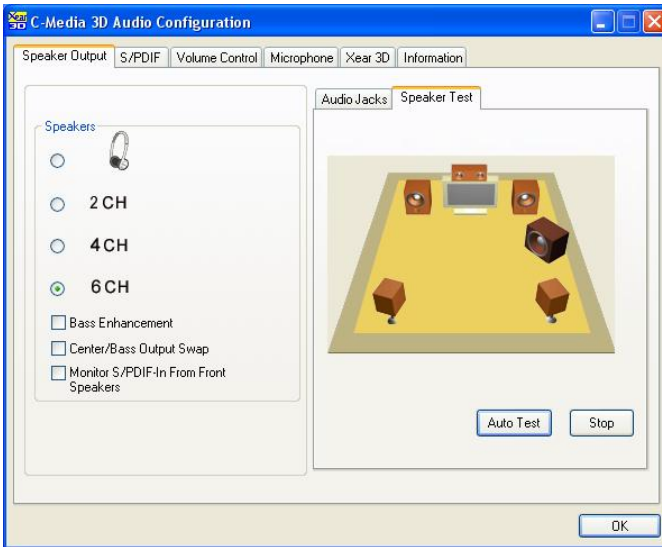
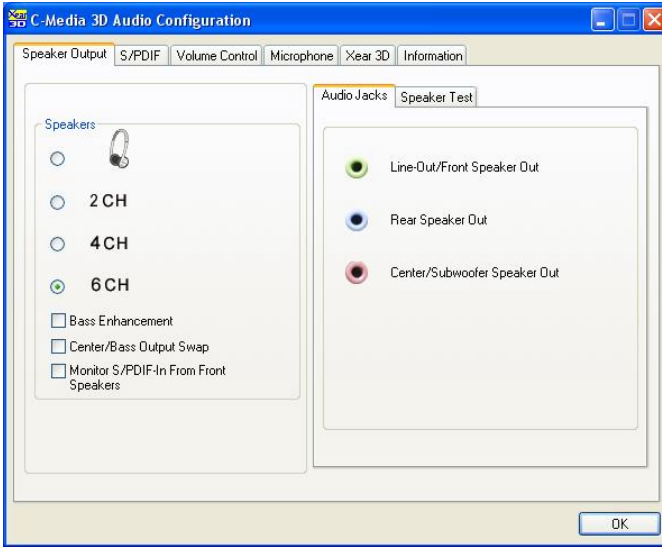




## 3. Four Channel



4. Six Channel

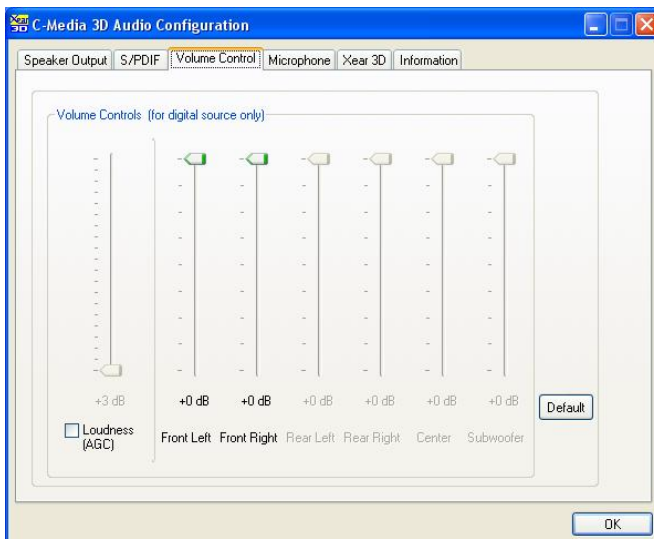


## 5.2 S/PDIF

### 1. S/PDIF Out Source / Format

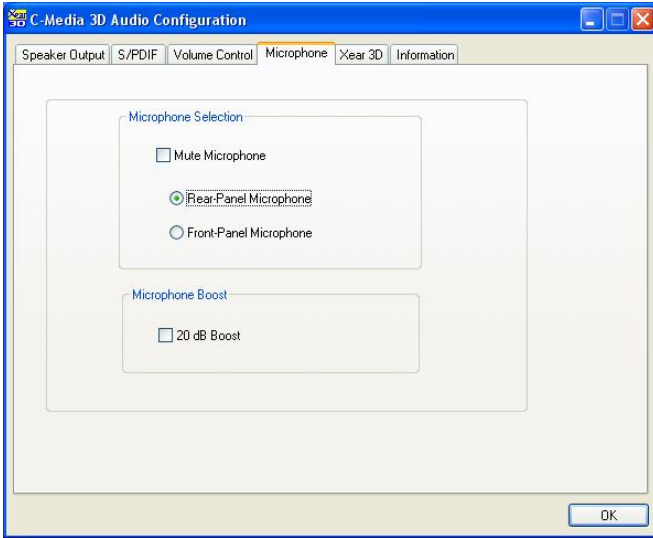


## 5.3 Volume Control



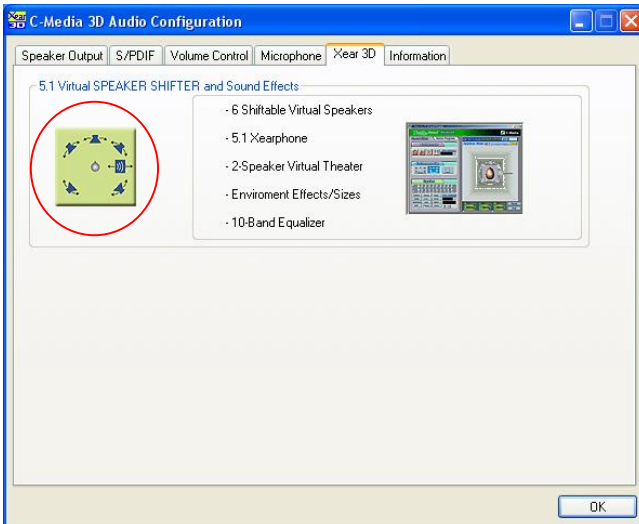
## 5.4 Microphone

### 1. Microphone Selection



## 5.5 Xear 3D

### 1. 5.1 Virtual SPEAKER SHIFTER and Sound Effects



## 2. Sound Effect



## 3. Demo Program



# Notes

**WARNING** *Overclocking*

*This motherboard is designed to support overclocking. However, please make sure your components are able to tolerate such abnormal setting, while doing overclocking. Any attempt to operate beyond product specifications is not recommended. **We do not guarantee the damages or risks caused by inadequate operation or beyond product specifications.***

*All rights are reserved for the products and corporate names/logos that appear in this manual to their original owners.*

*We reserve all the rights to change this manual. All information is subject to change without notice.*

## How To Contact CHAINTECH

Please do not hesitate to contact us if you have any problem about our products. Any opinion will be appreciated.

<p><b>For Asia, Africa, Australia and Pacific Island:</b> <b>CHAINTECH COMPUTER CO., LTD</b> No. 7-1, Chung Shin Rd., Tu Cheng, Taipei Hsien, Taiwan, ROC. <b>Tel:</b> +886-2-2268-9998 <b>Fax:</b> +886-2-2269-7510 <b>URL:</b> <a href="http://www.chaintech.com.tw">http://www.chaintech.com.tw</a> <b>E-mail:</b> <a href="mailto:sales@chaintech.com.tw">sales@chaintech.com.tw</a></p>	<p><b>For America:</b> <b>CHAINTECH AMERICA CORP.</b> 4427 Enterprise St. Fremont CA 94538, U.S.A. <b>Tel:</b> +1-510-656-3648 <b>Fax:</b> +1-510-656-2297 <b>URL:</b> <a href="http://www.chaintechusa.com">http://www.chaintechusa.com</a> <b>E-mail(Sales):</b> <a href="mailto:sales@chaintechusa.com">sales@chaintechusa.com</a></p>
<p><b>For UK:</b> <b>CHAINTECH UK., LTD.</b> 7200 The Quorum, Oxford Business Park North, Oxford, OX42JZ, UK <b>Tel:</b> 44-1865-487-165 <b>Fax:</b> 44-1865-481-482 <b>E-Mail:</b> <a href="mailto:phil@chaintech.nl">phil@chaintech.nl</a></p>	<p><b>For China</b> <b>CHAINTECH, SHENZHEN</b> 301, Nanguang Building, No.1004, Huaifu Rd, Futian District, Shenzhen, China 518041 <b>Tel:</b> +86-755-8368-9072 <b>Fax:</b> +86-755-8368-9053</p> <p><b>CHAINTECH, BEIJING</b> 403, Building A, No.118, Zhichun Rd, Haidian District, Beijing, China 100086 <b>Tel:</b> +86-10-6265-1626 <b>Fax:</b> +86-10-6262-0267 <b>URL:</b> <a href="http://www.chaintech.com.cn">http://www.chaintech.com.cn</a> <b>E-MAIL:</b> <a href="mailto:chaintech@21cn.com">chaintech@21cn.com</a></p>
<p><b>For The Netherlands:</b> <b>CHAINTECH EUROPE B.V.</b> Coenecoop 620 2741 PV WADDINXVEEN, THE NETHERLANDS <b>Tel:</b> +31-182-623-960 <b>Fax:</b> +31-182-623-969 <b>URL:</b> <a href="http://www.chaintech.dk">http://www.chaintech.dk</a> <b>Technical support</b> <b>E-Mail:</b> <a href="mailto:support@chaintech.nl">support@chaintech.nl</a></p>	<p><b>For France:</b> <b>AELT COMPUTER</b> 5 rue de Rome 93561 Rosny Sous Bois Cedex France <b>Tel:</b> 33-1-4855-5940 <b>Fax:</b> 33-1-4855-5942 <b>E-mail:</b> <a href="mailto:infos@chaintech-france.com">infos@chaintech-france.com</a></p>
<p><b>For Italy and Southern Europe:</b> <b>CELT COMPUTER s.r.l.</b> Via Privata Mulino 3 I-20090 Buccinasco, Milano, Italy <b>Tel:</b> +39-2-4510-9108 <b>Fax:</b> +39-2-4510-1354 <b>E-Mail:</b> <a href="mailto:celt@libero.it">celt@libero.it</a></p>	<p><b>For Korea:</b> <b>CHAINTECH KOREA CO., LTD.</b> 14F, Mi-Won B/D, Yeouido-Dong 43, Youngdeunpo-Gu, Seoul, Korea <b>Tel:</b> +82-2-6332-3377 <b>Fax:</b> +82-2-6332-3379 <b>E-Mail:</b> <a href="mailto:erin@chaintechkorea.com">erin@chaintechkorea.com</a></p>