



Declaration of Conformity

According to 47 CFR, Parts 2 and 15 of the FCC Rules

The following designated product:

**EQUIPMENT: MAINBOARD
MODEL NO.: 6ESV**

is a Class B digital device that complies with 47 CFR Parts 2 and 15 of the FCC Rules. Operation is subject to the following two conditions:

1. This device may not cause harmful interference.
2. This device must accept any interference received, including interference that may cause undesired operation.

This declaration is given to the manufacturer:

**CHAINTECH COMPUTER U.S., INC
509 Valley Way, Milpitas, CA 95035, U.S.A.**

Tel: 1-408-935-6988

Fax: 1-408-935-6989

Chaintech President: Raff Tung

Signature:

A handwritten signature in black ink, appearing to read 'Raff Tung', written over a horizontal line.

Federal Communications Commission Statement

This device complies with FCC Rules Part 15. Operation is subject to the following two conditions:

- ♦ This device may not cause harmful interference
- ♦ This device must accept any interference received, including interference that may cause undesired operation.

This equipment has been tested and found to comply with the limits for a Class B digital device, pursuant to Part 15 of the FCC Rules. These limits are designed to provide reasonable protection against harmful interference in a residential installation. This equipment generates, uses and can radiate radio frequency energy. If this equipment is not installed and used in accordance with the manufacturer's instructions, it may cause harmful interference to radio communications. However, there is no guarantee that interference will not occur in a particular installation. If this equipment does cause harmful interference to radio or television reception, which can be determined by turning the equipment off and on, the user is encouraged to try to correct the interference by one or more of the following measures:

- ♦ Reorient or relocate the receiving antenna.
- ♦ Increase the separation between the equipment and receiver.
- ♦ Connect the equipment to an outlet on a circuit different from that to which the receiver is connected.
- ♦ Consult the dealer or an experienced radio/TV technician for help.

The use of shielded cables for connection of the monitor to the graphics card is required to assure compliance with FCC regulations. Changes or modifications to this unit not expressly approved by the party responsible for compliance could void the user's authority to operate this equipment.

Canadian Department of Communications Statement

This digital apparatus does not exceed the Class B limits for audio noise emissions from digital apparatuses set out in the Radio Interference Regulations of the Canadian Department of Communications.

Manufacturer's Disclaimer Statement

The information in this document is subject to change without notice and does not represent a commitment on the part of the vendor. No warranty or representation, either expressed or implied, is made with respect to the quality, accuracy or fitness for any particular purpose of this document. The manufacturer reserves the right to make changes to the content of this document and/or the products associated with it at any time without obligation to notify any person or organization of such changes. In no event will the manufacturer be liable for direct, indirect, special, incidental or consequential damages arising out of the use or inability to use this product or documentation, even if advised of the possibility of such damages. This document contains materials protected by copyright. All rights are reserved. No part of this manual may be reproduced or transmitted in any form, by any means or for any purpose without expressed written consent of its authors. Product names appearing in this document are mentioned for identification purposes only. All **trademarks**, product names or brand names appearing in this document are registered property of their respective owners.

Main Board User's Manual

Table of Contents

Chapter 1 Introduction	1
1-1 Product Specifications	1
1-2 Package Contents	4
1-3 Mainboard Layout	5
1-4 Connector and Jumper Reference Chart	6
Chapter 2 Hardware Setup	7
2-1 Introduction to Jumpers	7
2-2 Installing an S.E.C. Processor in Slot 1	8
2-3 Setting Your CPU's Parameters(SeePU Technology)	9
2-4 Connector and Jumper Settings.....	11
2-5 Main Memory Configuration	18
Chapter 3 Award BIOS Setup Program	19
3-1 Standard CMOS Setup	20
3-2 BIOS Features Setup	23
3-3 SeePU & Chipset Setup	26
3-4 Power Management Setup	29
3-5 PNP/PCI Configuration	34
3-6 Load Setup Defaults	36
3-7 Integrated Peripherals	37
3-8 Supervisor Password & User Password Setting	39
3-9 IDE HDD Auto Detection	41
3-10 Save and Exit Setup	41
3-11 Exit Without Saving	41
Chapter 4 Brief Software Driver Guide	43
Chapter 5 ESS Solo-1(ES1938S) Audio Subsystem	45
5-1 Features	45
5-2 Sound Driver and Utility	45
5-3 CD-ROM Audio-in connection	45
Chapter 6 ATI RAGE IIC/Pro AGP Subsystem	47
6-1 Features	47
6-2 Memory	47
6-3 Operating Requirements.....	47
6-4 Driver and Utility Installation	47
6-5 Jumpersetting.....	48
6-6 Reference	48

Feature Explanations

SeePU Technology	9
Software Power-off Control	11
Power-On By Modem	11/33
Over-ride Power Button	12
Blinking LED in Suspend Mode	12
Wake Up On LAN	14/33
Creative's SB-LINK Sound	15
ACPIFeaturesReady.....	29
Power-On by Keyboard	16/38
Poly-fuse Over Current Protection	16
Power Failure Recovery	27
Flash BIOS Protection	27
Power-On by Alarm	33

Appendices

Appendix I On Board I/O Addresses & IRQ Maps	49
Appendix II Quick Connector and Jumper Reference	51



Memo

Chapter 1

Introduction

1-1 Product Specifications

❑ Processor

- Supports up to 333 MHz Intel **Pentium® II** processors and **Celeron®** processors
- Slot 1 CPU socket with retention mechanism
- High efficiency **Switching Power Module** (1.8v ~ 3.5v, 0.1v increments)
- Supports 60/66 MHz system clock speeds
- Innovative **SeePU** technology (software CPU installation with no jumper settings)



Supports 68 (Turbo mode), 75/83 MHz system clock for over-clocking possibility. (see section 2-3 "Overclocking")

❑ Chipset

- Intel **82440EX** two chip PCIs set

❑ DRAM Memory

- Two 3.3V 168-pin DIMM sockets support up to 256 MB
- Supports 16/32/64/128MB, 64/72-bit unbuffered Synchronous DIMM modules



Because 128MB unbuffered DIMM modules are not yet mainstream, their compatibility can not be 100% guaranteed. (See Section 2-5 for details.)

❑ Expansion Slots

- Three 32-bit PCI slots (Rev 2.1 compliant)
- One 16-bit ISA slots (one PCI/ISA shared slot)

❑ BIOS

- Award System BIOS, supports PnP, APM, DMI & Multi-device booting features i.e. floppy, LS120, CD-ROM, HDD(IDE, SCSI), ZIP-ATAPI etc.
- Includes Trend **ChipAway Virus** protection for virus-free boot and virus free operating system
 - ⊗ The Trend ChipAway Virus is a rule-based anti-virus technology and does not require periodical updates of virus code

❑ **Two Ultra DMA-33 PCI IDE Ports**

- Supports up to PIO Mode 4, Multi-word Mode 2 and Ultra DMA-33 timings
- Bus Mastering software drivers for all well known multi-task operating systems

❑ **On-board Ultra I/O**

- ITE8671 I/O chip (built-in AMI KBC software and RTC)
- One Parallel (SPP/ECP/EPP) and two Serial (16550A compliant) ports
- One floppy disk drive connector supports up to 2.88MB, Japanese 3-Mode, and 1Mbps transfer rates
- IrDA IR function supports up to 115.2Kbps

❑ **On Board Audio Subsystem**

- ESS PCI audio Solo-1(1938) controller
- Up to 48KHz programmable sample rate for record and playback
- Legacy audio compatible
- Advance wavetable synthesizer using wavedata on the system memory
- External audio connectors for Line-in, Line-out, Mic jack and Game/MIDI port

❑ **On-board 3D AGP VGA**

- **ATI RAGE- IIC**(Rage Pro Optional) chip for mainstream graphic performance
- **4MB SGRAM** onboard
- Supports proprietary feature connector for TV-out module (Optional)

❑ **Two Channel USB Ports**



Now under compatibility testing with different peripherals

❑ **Board Dimensions**

- Micro-ATX form factor, 244mm x 210mm, 4 Layers
- Six mounting holes

❑ **Advanced Management Features**

- Software power off control, Over-ride power button, Power-on by modem, Power on by alarm, Power-on by keyboard, Chassis intrusion detection, Power failure recovery, **Wake Up On LAN**, etc.
- **Poly-fuse** over-current protection for USB and keyboard
- Flash BIOS protect via BIOS
- Supports **SB-link** header for Creative PCI audio cards
- On-board Management Extension Hardware and includes system monitoring software to streamline PC management

- Meets EPA Green PC standard: power consumption under 30W in Doze, Standby, and Suspend modes
- **ACPI** features ready when ACPI-enabled O/S is available

□ Switching Power Supply Requirement (at least 200 Watts)

Output Voltage	Max. Regulation Requirement	Min. Current Requirement (Amps)
+12V	+/- 5%	0
+5V	+/- 5%	1
+3.3V	+/- 5%	10*
-5V	+/- 10%	0
-12V	+/- 10%	0
+5VSB	+/- 5%	0.75

Table 1-1



3.3V at 10Amps is necessary to guarantee full loading operation because some AGP cards and memory modules have high current consumption.

1-2 Package Contents

This product comes with the following components:

- One mainboard
- On-board Slot 1 universal retention mechanism and two bridges
- One 40-pin IDE connector ribbon cable (Figure 1-1)
- One 34-pin floppy disk drive ribbon cable (Figure 1-2a) or (Figure 1-2b)
- One User's Manual
- One plastics Stub for ATX chassis installation
- One CD-ROM that includes
 - Intel Bus Master IDE drivers for Win95, WinNT, and OS/2
 - Sound Driver and Utility for Win95 and WinNT
 - Graphics Accelerator Driver and Utility for Win95 and WinNT
 - Award Flash EPROM Utility, Award DMI Utility
 - Exclamation Mark Remover Utility
 - Shepherd Utility--System Health Monitoring Software
 - Trend **PC-cillin** Anti-virus v3.0(OEM version) Utility in eight different languages



Figure 1-1

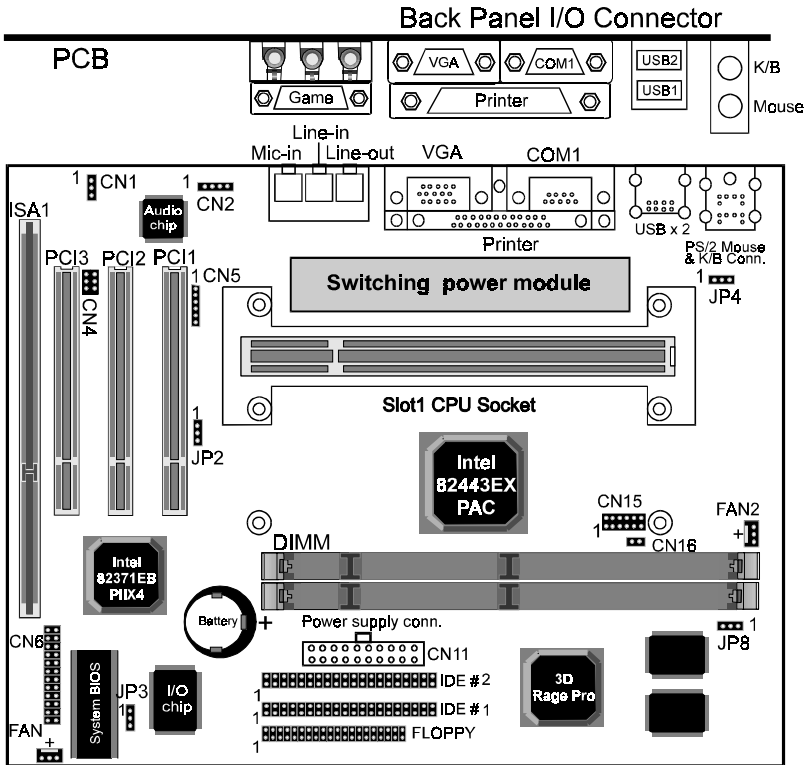


Figure 1-2a Standard Floppy cable



Figure 1-2b Optional 5.25 in. floppy cable

1-3 Mainboard Layout



1-4 Connector and Jumper Reference Chart

Jumper & Connector No.	Function	Page
CN1	WOL (Wake on LAN) Connector	14
CN2	CD-ROM audio in Connector	15
CN4	Creative's SB-LINK connector	15
CN5	Infrared connector	14
CN6	Keyboard lock & Power indicator LED connector	12
	System reset switch connector	13
	Speaker connector	13
	Green switch & Green LED connector	13
	Turbo LED connector	13
	IDE activity LED connector	13
	Over-ride power button connector	12
CN11	ATX Power supply connector	11
FAN1	System cooling fan connector	14
FAN2	CPU cooling fan connector	14
J P2	On board Audio enable/disable jumper	15
J P3	Clear CMOS data jumper	15
J P4	Power on by keyboard enable/disable jumper	16
J P8	On board VGA enable/disable jumper	17
Ports	PS/2 mouse and keyboard ports	16
Ports	USB (Universal Serial Bus) ports	17

Chapter 3

Award BIOS Setup Program

Award's BIOS ROM has a built-in setup program that allows users to modify the basic system configuration. This information is stored in CMOS RAM so that it can retain the setup information, even when the power is turned off.

When you turn on or reboot the system, press the Delete key to enter the Award BIOS setup program. The primary screen as shown in Figure 3-1 is a list of the menus and functions available in the setup program. Select the desired item and press enter to make changes. Operating commands are located at the bottom of this and all other BIOS screens. When a field is highlighted, on-line help information is displayed on the left bottom edge of the screen.

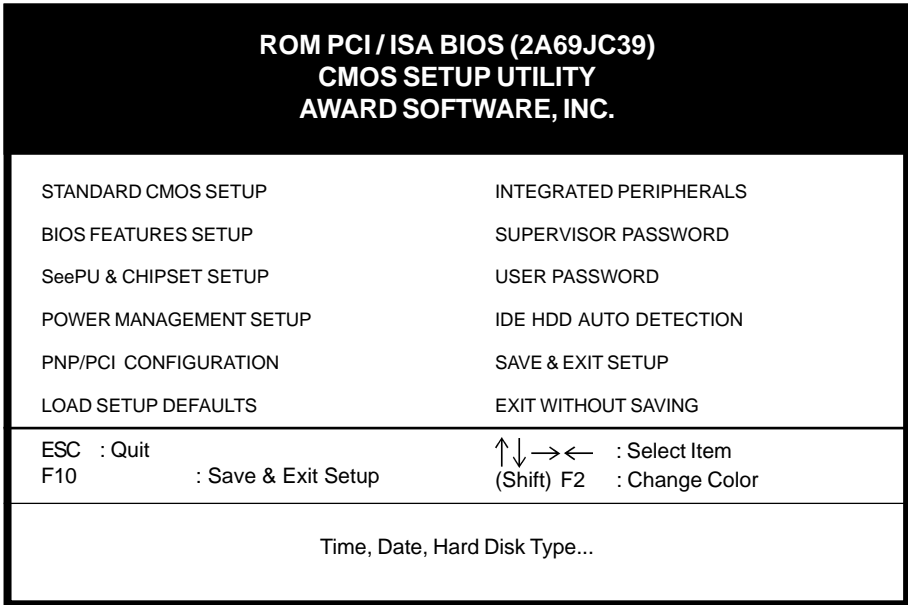


Figure 3-1 Setup Program Initial Screen

3-1 Standard CMOS Setup

The Standard CMOS Setup allows users to configure system components such as hard disk drive, floppy disk drive and video display as well as date, time and boot-up error signaling. This configuration menu should be changed when installing a mainboard for the first time, changing hardware in your system such as the HDD, FDD, video display, or when the CMOS data has been lost or contaminated. Choose the Standard CMOS Setup option from the CMOS Setup Utility menu (Figure 3-1) to display the following screen. When a field is highlighted, on-line help information is displayed on the left bottom edge of the screen.

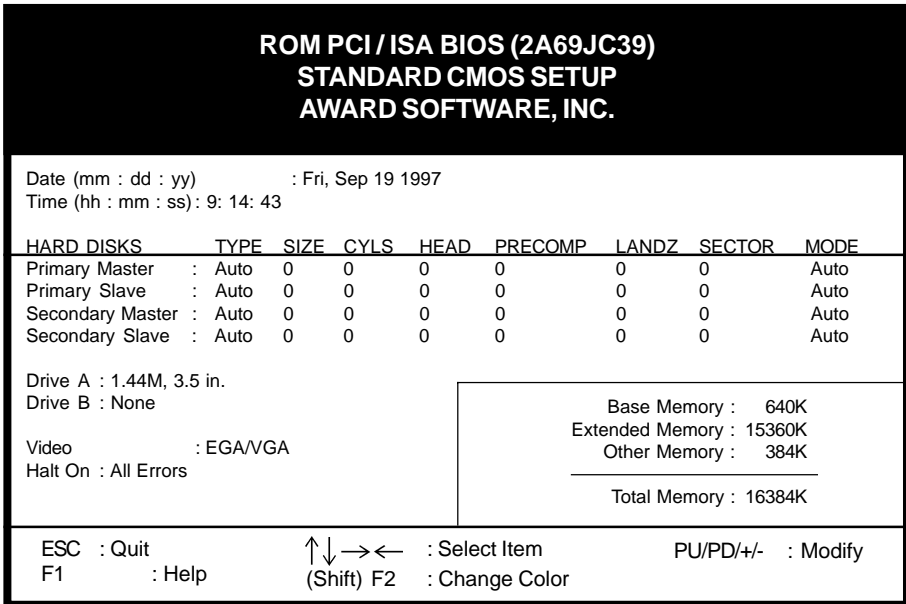


Figure 3-2 Standard CMOS Setup Screen

Date/Time

Set the date and time. Do not skip this function as all of your timed events such as power management, saving files, etc. are based on this timer.

Hard Disk Setup (Primary/Secondary; Master/Slave)

This category identifies up to four IDE hard disk drives that have been installed in the computer. This section does not show information on other IDE devices such as CD-ROM drives or other hard drive types such as SCSI drives.

Type (Auto/User/None): Use the fields under the Type column to determine the method you will use to configure the IDE devices. If you choose Auto, BIOS will automatically detect and make optimal settings for most IDE hard drives.



The mainboard manufacturer recommends that you choose Auto for all drives.

Choose User to define your own drive type manually. You must enter values indicated in the table below into each drive parameter field. This information should be included in the documentation from your hard disk vendor or system manufacturer:

TYPE	Setting method
CYLS	Number of cylinders
HEAD	Number of heads
PRECOMP	Write precompensation cylinder
LANDZ	Landing zone
SECTOR	Number of sectors
MODE	Mode type

Table 3-1 Hard Disk Drive Parameters

Cyls/Head/Sector: The number of Cylinders, Heads, and Sectors can usually be found written on the top of the hard disk. If you have a relatively new hard drive, entering this information alone is usually sufficient for normal hard disk operation. The hard disk will not work properly if you enter improper information for these categories.

Precomp: Older hard drives (i.e., MFM or RLL drives) have the same number of sectors per track at the innermost tracks as at the outermost tracks. Thus, the data density at the innermost tracks is higher and the bits are lying closer together. Even though the physical size of a sector gets progressively smaller as the track diameter diminishes, each sector must still hold 512 bytes. Write precompensation circuitry compensates for the difference in sector size by boosting the write current for inner track sectors.

Landz: This defines the address of the landing zone and is only used for older hard drives which do not have an auto-parking feature.

Mode: If the Type value is not None for any device, you must set the Mode value for that device. There are four different Mode values: Auto, Normal, Large, and LBA.

Auto - BIOS detects and enters the IDE drive type during bootup.

Normal - for IDE drives that meet the old IDE specification which support a maximum capacity of 528MB (1024 cylinders, 16 heads, and 63 sectors).


Large - for IDE drives that do not support LBA and have more than 1024 cylinders. Try this setting if your hard disk does not operate properly with

the LBA setting. Large mode is not supported by all operating systems, i.e., only certain versions of DOS support large mode.

LBA - (Large/Logical Block Addressing) With LBA, the IDE controller transforms the data address described by sector, head, and cylinder number into a physical block address, significantly improving data transfer rates. This mode is for drives with greater than 1024 cylinders and between 528MB and 8.4GB in size. This protocol is the current common standard.

Choose None for Type if there are no IDE HDD devices in your system.

You can use the IDE HDD Auto Detection function to auto detect your hard drive parameters. Using this function will automatically insert the parameters

 discussed under Hard Disk Setup and will indicate User for the Field value.

Please see Section 3-9 for more information.

Floppy Disk Drives

Choose the memory capacity and disk size that corresponds with that of your floppy disk drive(s).

Video

Select the type of video adapter present in your system. You can ignore this setting if you are using a VGA monitor since VGA BIOS automatically configures this setting.

Halt

When the system is powered on, BIOS performs a series of diagnostic tests called POST (Power On Self Test). This function stops the computer if BIOS detects a hardware error. You can tell BIOS to halt on all errors, no errors, or not to halt on specific errors.

3-2 BIOS Features Setup

By choosing the BIOS Features Setup option from the CMOS Setup Utility menu (Figure 3-1), the screen below is displayed. This sample screen contains the manufacturer's default values for the mainboard.

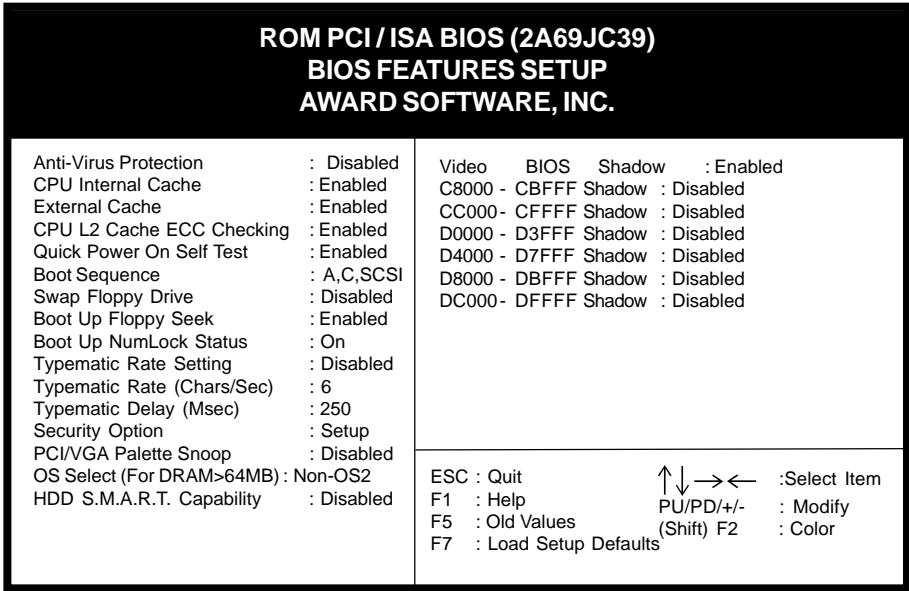


Figure 3-3 BIOS Feature Setup Screen

A. VIRUS PROTECTION

Trend ChipAway Virus

Trend ChipAway Virus is a code incorporated in the mainboard's BIOS firmware. During the boot-up sequence, BIOS loads before loading of the partition table or boot sector. ChipAway Virus loads with BIOS and is able to detect boot-up viruses before they have a chance to infect the hard drive. ChipAway Virus employs rule-based logic that doesn't look for specific viruses but rather detects patterns found in every virus, eliminating the need to perform periodical version updates after new viruses have been found.

B. CACHE CONTROL

CPU Internal Cache/External Cache

Cache memory is much faster than conventional DRAM system memory. These fields allow you to enable or disable the CPUs Level 1 built-in cache and Level 2 external cache. Both settings are left enabled to significantly increase the performance of your computer.

C. BOOT UP FEATURES

After turning on the system, BIOS will perform a series of device initializations and diagnostic tests discussed below.

Quick Power On Self Test (POST)

Enable this function to reduce the amount of time required to run the POST (Power On Self Test). BIOS saves time by skipping some items during POST. It is recommended that you disable this setting. Discovering a problem during bootup is better than losing data during your work.

Boot Sequence

This option sets the sequence of drives BIOS attempts to boot from after POST completes. BIOS will search these drives for an operating system.

Swap Floppy Drive

Enabling this function will swap the floppy drive assignment so that drive A will function as drive B, and drive B will function as drive A. Note that the boot sequence assignment mentioned directly above does not include booting from floppy drive B. This function is useful if floppy drives B and A are of a different format and you want to boot from floppy drive B.

Boot up Floppy Seek

During POST, BIOS will determine if the installed floppy disk drive has 40 or 80 tracks. A 360K drive has 40 tracks and 720K, 1.2M and 1.44M drives have 80 tracks. All modern floppy disk drives have 80 tracks.

Boot Up NumLock Status

This function defines the keyboard's numberpad as number keys or arrow keys.

D. KEYBOARD INTERFACE

Typematic Rate Setting

When enabled, you can set the following two typematic control items. When disabled, keystrokes are determined arbitrarily by the keyboard controller in your system.

Typematic Rate (Chars/Sec)

The typematic rate sets the rate at which characters on the screen repeat when a key is pressed and held down.

Typematic Delay (Msec)

The typematic delay sets how long after you press a key that a character begins repeating.

E. Security Option

The Supervisor and/or User Password functions shown in Figure 3-1 must be set to take advantage of this function. See Section 3-8 for password setting information. When the Security Option is set to System, a password must be entered to boot the system or enter the BIOS setup program. When the Security Option is set to Setup, a password is required to enter the BIOS setup program.

F. PCI/VGA Palette Snoop

Some non-standard VGA cards or MPEG video cards may not show colors properly. Setting this function to Enabled can correct this problem.

G. OS Select (For DRAM > 64MB)

If your system's DRAM is larger than 64MB and you are running OS/2, select OS/2 as the item value. Otherwise, set the item value to Non-OS/2 for all other operating systems.

H. HDD S.M.A.R.T. Capability

S.M.A.R.T. or Self-Monitoring, Analysis, and Reporting Technology enables a drive's internal status to be monitored through diagnostic commands. Both your hard drive must support this capability and this function must be enabled in order to take advantage of this function. See your hard drive literature for more information.

I. Shadow Memory

Software such as system BIOS, video BIOS, SCSI BIOS, etc that resides in ROM (Read Only Memory) chips is called firmware. Shadowing of firmware occurs when BIOS is copied to RAM address C0000h through DFFFFh. Video BIOS loads into the C0000-C7FFF memory area when video shadowing is enabled. If an expansion peripheral in your system contains ROM-based firmware, you need to know the address range the ROM occupies to shadow it into the correct area of RAM.

Shadowing improves the firmware's performance because the firmware can be read by the CPU through the 16- or 32-bit DRAM bus as opposed to the 8-bit XT bus. However, shadowing also results in reducing the amount of high memory (640 KB to 1 MB) for loading device drivers. Shadowing is used mostly for ROM chips on ISA cards and not for PCI cards. Shadowing and playing games at the same time may result in system instability as some games access the RAM memory area being shadowed.

3-3 SeePU & Chipset Setup

By choosing the *SeePU* & Chipset Setup option from the CMOS SETUP UTILITY menu(Figure 3-1), the screen below is displayed. This sample screen contains the manufacturer's default values for the mainboard.

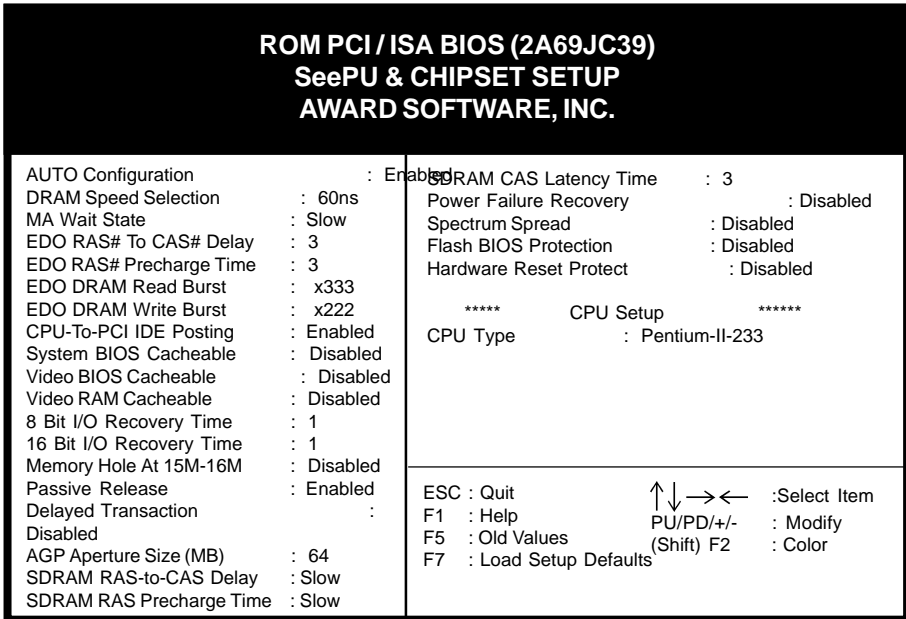


Figure 3-4 Chipset Features Setup Screen



With the exception of the CPU Setup, all of the above settings have been determined by the mainboard manufacturer and should not be changed unless you are absolutely sure of what you are doing. Explanation of the DRAM timing and chipset features setup is lengthy, highly technical and beyond the scope of this manual. Below are abbreviated descriptions of the functions in this setup menu. You can look on the world wide web for helpful chipset and RAM configuration information including AWARD's web site at <http://www.award.com>.

A. Auto Configuration

When Auto Configuration is enabled, BIOS autodetects the DRAM module type (i.e. EDO, FP) and determines the relevant DRAM settings. Note that these DRAM settings become background print (unchangeable) once the Auto Configuration

is enabled. If Auto Configuration is enabled, you must set the DRAM timing function to 60ns or 70ns, depending on the type of DRAM you install.

B. 8-bit I/O Recovery Time & 16-bit I/O Recovery Time

Back-to-back CPU or PCI master originated 8-bit and 16-bit cycles have an arbitrary delay of at least 3.5 system clock cycles. This category is used to add additional recovery delay between 8-bit and between 16-bit cycles. This delay takes place because the PCI bus is much faster than the ISA bus. The options are 1 to 8 and N/A.

C. Memory Hole at 15M-16M

Enabling this function will reserve the memory address space between 15MB and 16MB for ISA expansion cards. However, enabling this function will result in not allowing the system to have access to memory above 16MB. Please note that some expansion cards require this setting to be enabled. The default setting is Disabled.

D. Power Failure Recovery

Computers using an ATX power supply do not turn back on after the power source to the computer unexpectedly fails (i.e. electricity outage). Enabling this setting will allow the system to always turn back on after a power failure. This is especially important for computers that must be on 24 hours per day.

E. Spectrum Spread

When Enabled this function will cause lower EMI by spreading the system frequency spectrum. For normal operation, Disable this function.

F. Flash BIOS Protection

The mainboard manufacturer developed BIOS protection technology that protects the System BIOS from accidental corruption by unauthorized users or computer viruses. When enabled, the BIOS data cannot be changed when attempting to update BIOS with the the FLASH utility. When disabled, the BIOS data can be updated by using the FLASH utility.



To Pass the Windows 95 SCT testing, this item should be disabled.



Please note that when disabling this setting, the system BIOS is vulnerable by intrusion of computer viruses. It is recommended to disable this setting only temporarily while updating your system's BIOS.

G. Hardware Reset Protect

When this function is enabled, your PC's hardware reset button will not function. This function is especially useful to prevent accidental resets for file servers and routers, etc. which should be available 24 hrs/day. When disabled, your PC's hardware reset button will function normally.

H. CPU Setup

The mainboard manufacturer developed *SeePU* technology that allows you to easily change your CPU's **clock multiplier factor** and **CPU Bus frequency** in BIOS. Refer to Section 2-3 for details.

3-4 Power Management Setup

This section provides information on the Green PC power management functions. By choosing the Power Management Setup option from the CMOS Setup Utility menu (Figure 3-1), the screen below is displayed. This sample screen contains the manufacturer's default values for the mainboard.

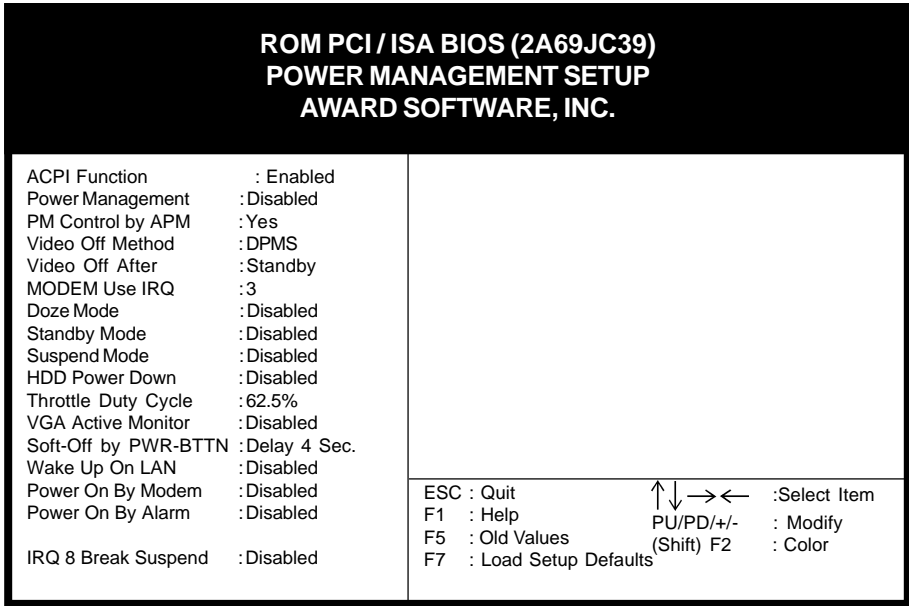


Figure 3-5 Power Management Setup Screen

A. Advanced Configuration Power Interface (ACPI)

ACPI management enables the operating system to control the amount of power given to each device attached to the computer. With ACPI, the operating system can turn off peripherals devices, such as CD-ROM players, when they are not in use.

B. Power Management

Power management allows the computer to save electricity when it is not in use by entering increasingly deep power saving modes as shown by the diagram below.

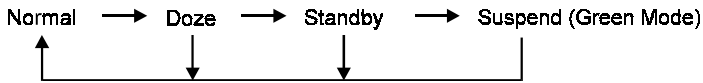


Figure 3-6 Power Saving Mode Flow Chart

The computer runs in Normal operation mode until the Doze timer expires, at which point the computer enters Doze mode. If no external activity occurs, the computer will go into Standby and Suspend modes when their respective timers expire. If external activity occurs, the computer will wake up from Power Management and return to Normal mode. To activate the function, set Power Management to Maximum Saving, User Define, or Minimum Saving described below. For a description of the power saving modes (Doze, Standby, and Suspend) see their descriptions below.

Disabled - Turns off the Power Management functions.

Max. Saving - All timers are set at the minimum value of one minute to maximize power saving.

Min. Saving - All timers are set at the maximum value of one hour for minimal power saving.

User Define - User can configure the timer to a desired time according to the values available.

- Note that enabling the Power Management function will result in enabling the HDD Power Down function (Max Saving = 15 min, Min Saving = 1 min). The HDD Power Down function is not part of the Power Management scheme as indicated in Figure 3-6. Refer to the Standby Mode, Suspend Mode, and HDD Power Down descriptions below for more information on hard drive power management.

C. PM Control by APM

This function allows software other than BIOS to control Power Management features. Enable this function in BIOS and make sure APM (Advanced Power Management) is present. For example, run the Power utility program located in the DOS directory, C:\DOS\POWER.EXE to use Power Management features under DOS. For Windows 3.1x and Windows 95, you need to install Windows with the APM feature.

D. Video Off Method

This function serves as both a screen saver and power saver for monitors. See the next function, Video Off After, for setting the video timer.

Blank - BIOS will only blank the monitor's screen. The electricity saved in this mode is negligible and this function is only used as a screen saver to prevent screen damage while the screen is on but not in use.

V/H SYNC+Blank - The system turns off the vertical and horizontal synchronization ports, writes blanks to the VGA buffer and the monitor's electron gun turns off. This function requires a monitor with Green features in order to take advantage of the power saving function. If you enable this function and do not have a Green monitor, the result will be the same as if you had selected Blank. This function serves as both a screen saver and an electricity saver.

DPMS Supported - Select this option if your video card supports the Display Power Management Signaling (DPMS) standard (i.e., you have a monitor that supports Green features). Use software supplied by your video subsystem to set video power management options.

E. Video Off After

This setting determines when the monitor enters power saving mode. As the function name indicates, the monitor enters the power saving mode after the chosen event expires. The Power Management function must be enabled to use this function.

F. Modem Use IRQ

If your computer has a modem, use this function to tell BIOS which IRQ is being occupied by the modem card. When the system is in Green mode, the modem requires an IRQ assignment to wake up the system and perform tasks. This assignment is compliant with the APM 1.2 specification and is to be used in coordination with APM 1.2 compliant operating systems.

G. Doze Mode

The Power Management function must not be set to disabled to enable this function. If no interrupts have occurred and the Doze timer expires, system will enter Doze mode. In Doze mode, the CPU clock runs at a lower speed while all other devices operate normally.

- ✎ Power saving modes achieved in lower power saving states will either be maintained or enter higher power saving modes when switching to higher power saving states. For example, the CPU clock will not switch back to normal in Standby mode. It will maintain a decreased rate in Standby Mode and turn off in Suspend Mode.

H. Standby Mode

The Power Management function must not be set to disabled to enable this function. If the system runs in Doze mode and the Standby timer expires, the system will enter Standby mode. In Standby mode, the hard disk drive and the monitor shut off while all other devices still operate at full speed. Note that the Video Off and HDD Power Down functions in Figure 3-5 provide the same power saving options found in Standby mode. The priority for determining which function controls power saving for the monitor and hard drive is determined by which timer expires first.

I. Suspend Mode

The Power Management function must not be set to disabled to enable this function. If the system runs in Standby mode and the Suspend timer expires, all devices regulated by power management will shut off and the CPU speed will be 0 MHz.

J. HDD Power Down

The Power Management function must not be set to disabled to enable this function. When the HDD idle time has elapsed, BIOS sends a command to the hard disk to turn off the motor. Set a time between 1 and 15 to indicate time required to wait before the hard drive enters a power saving mode. Some old hard drives may not support this function.

K. Throttle Duty Cycle

When the system enters Doze mode, the CPU clock runs only part of the time. You may select the percent of time that the clock runs.

L. VGA Active Monitor

When Enabled, any video activity restarts the global timer for Standby mode.

M. Soft-Off by PWR-BTTN

When set to Delay 4 Sec., this function allows the power button to put the system in Suspend, a power saving mode. See Section 2-4 for operation instructions of the over-ride power button operation which puts the system in Suspend mode. When set to Instant-Off the Soft-Off by PWR-BTTN function is disabled and the computer turns completely off when the power button is pressed.

N. Wake Up On LAN

Enable this selection to use the Wake Up On LAN function discussed in Section 2-4 of this manual.

O. Power On By Modem

When enabled, a modem that receives a call will wake up the system from soft off and green mode. You should connect the modem to the COM port and turn on the resume event in green mode.

P. Power On By Alarm

When enabled, this setting allows the system to turn back on at a designated time of the month. User must designate date of month and time of day. This function is only available when using an ATX power supply and the Software Power-Off function to turn off the computer. See the Software Power-Off feature in Section 2-4 of this manual for instructions.

Q. IRQ8 Break Suspend

Enabling this setting turns the monitoring of IRQ8 (the Real Time Clock) On so it does not awaken the system from Suspend mode.

3-5 PNP/PCI Configuration

This section provides IRQ and DMA setting information. By choosing the PNP/PCI Configuration option from the CMOS Setup Utility menu (Figure 3-1), the screen below is displayed. This sample screen contains the manufacturer's default values for the mainboard.

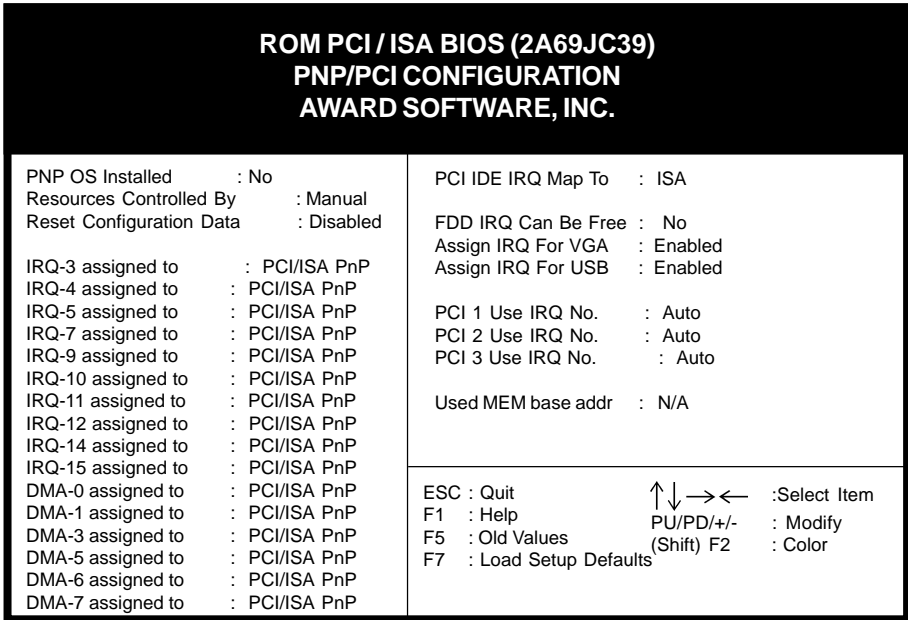


Figure 3-7 PCI & ONBOARD I/O Setup Screen

A. PNP OS Installed

If you want to install a PNP compatible OS (such as Windows 95) set to Yes.

B. Resources Controlled By

When set to Manual the system BIOS will not refer to the ESCD for IRQ & DMA information. Instead, it will refer to the items in the setup menu for assigning IRQ & DMA. When set to Auto the system BIOS will refer to the ESCD for all legacy information.



ESCD(Extended System Configuration Data) provides a detailed format of the configuration data structures stored in flash memory. Each data structure defines the resources used by a device or a card in the system. This includes legacy and PCI/ISA PnP devices.

C. Reset Configuration Data

When enabled the system BIOS will clear/reset the ESCD during POST. After clearing the ESCD, the BIOS will then change this item's value to Disabled. Otherwise, the ESCD data will become useless.

D. IRQ#/DMA# assign to

When resources are controlled manually, you can assign each system interrupt & DMA channel for "Legacy ISA" or "PCI/ISA PnP" card used.

While using **Legacy ISA Card**(non-PnP ISA card), please set it's necessary corresponding resources (INT#, DMA#) from "PCI/ISA PnP" to "Legacy ISA."

- ✎ All ISA non-PnP devices are legacy devices that select resources (I/O Addr., INT# or DMA#) by using hardware jumpers.
- ✎ IRQ-3/4/7/12/14/15 have been set as default for on board devices (COM2, COM1, Printer port, PS/2 mouse, IDE1 and IDE2).

E. PCI IDE IRQ Map to

This function allows user to select PC AT (ISA) interrupts or PCI IDE IRQ mapping.

ISA: BIOS does not designate any IRQ signal to the PCI slot. This is the default setting.

PCI-SLOT 1-4: User can designate which PCI slot (1-4) the IDE card is inserted into. This setting is suitable for use with older PCI IDE cards that BIOS is not able to recognize.

PCI-AUTO: BIOS automatically detects which PCI slot the PCI IDE card is inserted into.

F. Assign IRQ For VGA

This function allows BIOS to make an IRQ available to VGA cards. Most current VGA card models do not require this function to be enabled.

G. FDD IRQ Can Be Free

This function allows user to choose if the FDD IRQ is able to be freed up. The default setting is NO and this does not allow the IRQ to be free.

H. Assign IRQ For USB

If USB is employed this function must be Enabled. Otherwise, disable this function to optimize Windows 95 IRQ resources for other IRQ usage.

I. Used MEM base addr

This function devotes a space of memory (8K, 16K, 32K, 64K) for any peripheral that has a high memory requirement. This is also used to designate memory space for legacy ISA cards. The settings C800~DC00 are used to designate point at which the memory will start being used. The default setting is N/A (disabled.)

J. Used MEM Length

8K~64K: Determines the amount of memory to be used by ISA cards mentioned in the Used MEM base addr function above.

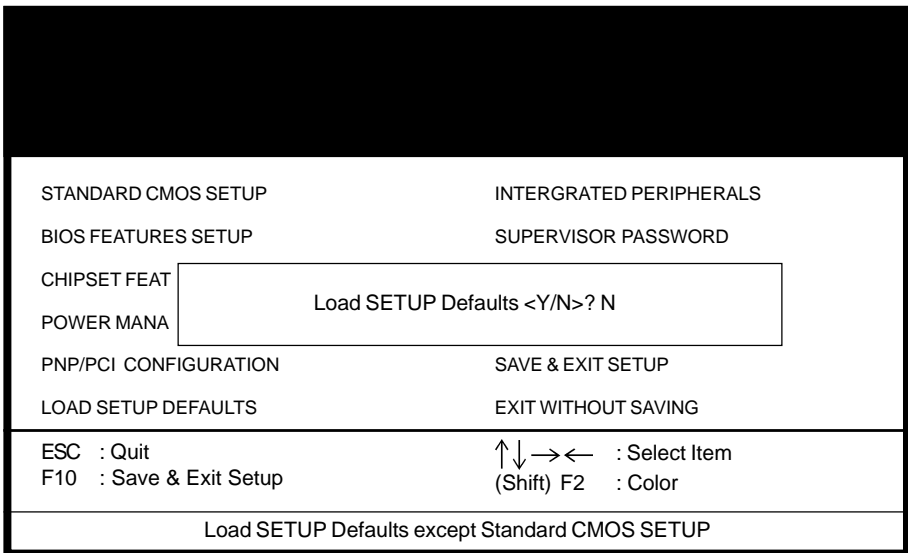


Figure 3-8 Load Setup Defaults Screen

3-7 Integrated Peripherals

This section provides information on setting peripheral devices. By choosing the Integrated Peripherals option from the CMOS Setup Utility menu (Figure 3-1), the screen below is displayed. This sample screen contains the manufacturer's default values for the mainboard.

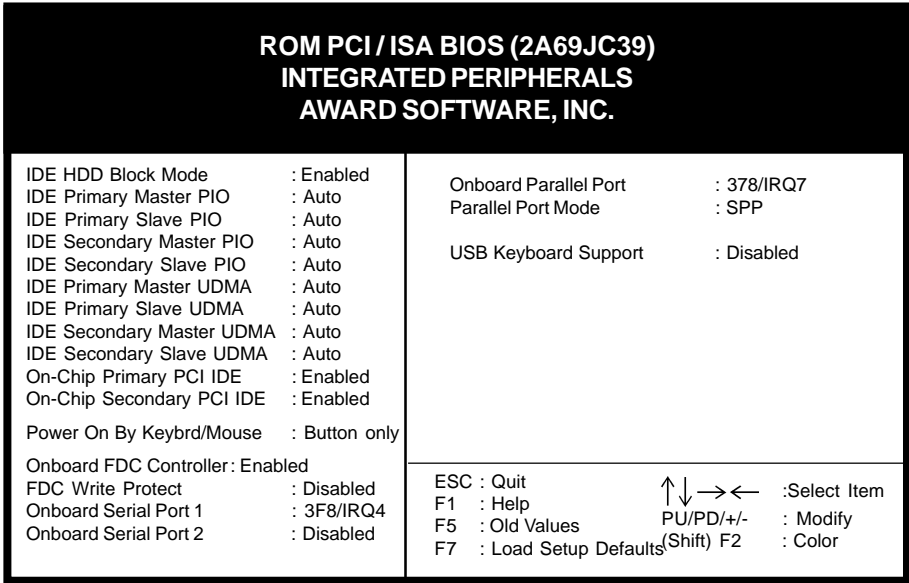


Figure 3-9 Integrated Peripherals Setup Screen

3-6 Load Setup Defaults

Load Setup Defaults loads the default system values directly from the CMOS Setup Utility menu (Figure3-1). If the stored record created by the setup program becomes corrupted and therefore unusable, these defaults will be loaded automatically when you turn on the computer.

A. On Board IDE Control

IDE HDD Block Mode

Specify the maximum number of sectors that can be transferred at a time.

PCI Slot IDE 2nd Channel

This item allows you to turn on the 2nd channel of this external board when designating a high performance IDE board into a PCI slot. You must disable On-chip IDE controller when enabling this function.

On-chip Primary/Secondary PCIIDE

You can set this to disable the On-chip IDE controller if you are going to add a higher performance IDE board.

IDE Primary/Secondary Master/Slave PIO

The four IDE PIO (programmed Input/Output) filed let you set a PIO mode (0-4) for each IDE device that the internal PCIIDE interface supports. Modes 0 through 4 provide successively increased performance. In Auto mode, the system automatically determines the best mode for each device.

B. Power On By Keybrd/Mouse

Set to Pwr Button to control the system power via the button on your system case. Set to Mouse Click to turn on the power via a PS/2 mouse, and set to Hot Key or Password to turn on the power via keyboard. With Hot Key and Password you must decide on which keys will turn on the power.

C. COM2 Mode

When this function is Enabled, then the COM port will be redirected to support IR function.

D. USB Keyboard Support

If your current operating system doesn't support USB drivers (i.e., DOS) this function must be enabled for USB keyboard operation in these operating systems.

- ☒ When using a USB keyboard this function is automatically Enabled during bootup regardless of its setting in BIOS.

3-8 Supervisor Password & User Password Setting

There are four different variables that control password settings. The first two are located under the Security Option function in BIOS Features Setup Menu (Figure 3-3). When the Security Option function is set to Setup, a password is required to enter BIOS and change BIOS settings. When the Security Option function is set to System, a password is required to enter both BIOS and the computer's operating system (for example Windows 95) found on the boot drive. This is shown in Figures 3-9 and 3-10.

The third and fourth variables are user password and supervisor password selected in BIOS (Figure 3-1). The main purpose of separating user and supervisor is to allow only the supervisor to have control over the settings in BIOS. The user, on the other hand, is only allowed to access the computer's operating system and change the user password in BIOS (See Figure 3-10 below). Note that when there is no supervisor password set, the user password controls access to all BIOS settings (See Figure 3-9 below).

A. Set Either Supervisor Password or User Password

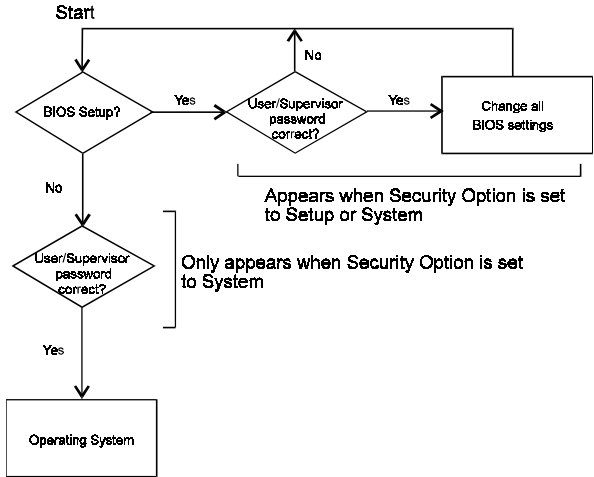


Figure 3-9 Set Either Supervisor or User Password

B. Set Both Supervisor Password and User Password

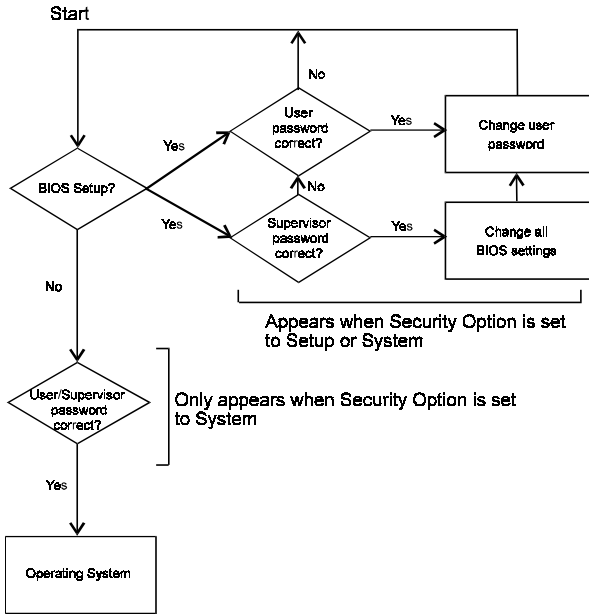


Figure 3-10 Set Both Supervisor and User Password

3-9 IDE HDD Auto Detection

This utility can automatically detect IDE hard disk type and parameters. The detection process take about 5 seconds for each physical drive. After the utility detects the disk drive, type Y and press [Enter] to automatically load the parameters in the Hard Disk section of the Standard CMOS Setup menu. Otherwise, leave the option set at N and press [Enter] or the [Esc] key to skip the detected drive. After detecting your hard drive(s), return to the Standard CMOS menu to check your settings.

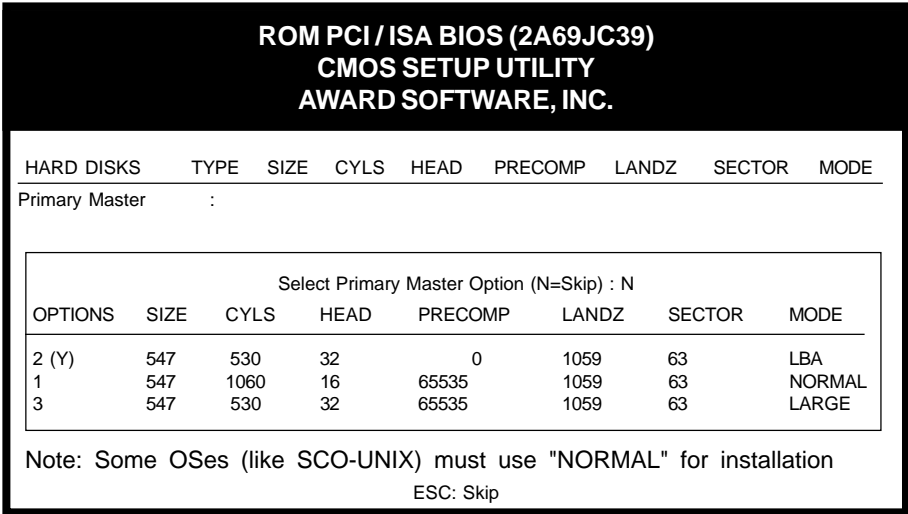


Figure 3-11 IDE HDD Auto Detection Screen

3-10 Save and Exit Setup

If you select this and type Y (for yes) followed by the [Enter] key, the values entered in the setup utilities will be recorded in the CMOS memory of the BIOS chip.

3-11 Exit Without Saving

Selecting this option and pressing Y followed by the [Enter] key lets you exit the Setup program without recording any new values or changing old ones.



Memo

Brief Software Driver Guide

The Mainboard Software Guide is found on the CD-ROM that is enclosed with your mainboard and is a PDF file which must be viewed with Adobe's freeware called Acrobat® Reader. The Acrobat Reader software is also included on the same CD-ROM. See the Readme.txt file in the CD-ROM's root directory for installation instructions of the Acrobat Reader. The Mainboard software guide discusses the following items:

The following items are discussed in the PDF files:

- Bus Master/PIO IDE Driver Installation
- Sound Driver and Utility Installation
- Graphics accelerator driver and Utility Installation
- USB Driver Installation
- Removing the Exclamation and/or Question Marks From the Windows 95 Device Manager Menu
- Updating Your System BIOS
- Installing and Using a Desktop Management Interface (DMI) Utility



Memo

Chapter 5

Audio Subsystem

5-1 Feature

- ESS PCI audio Solo-1 (ES1938S) subsystem on a single chip.
- Advance wavetable synthesizer using wavedata on the system memory.
- Up to 48KHz programable sample rate for record and playback.
- Intergrated Spatializer 3D effects Processor.
- Advance power management meets ACPI standards.
- Full duplex operation for simultaneous record and playback.



5-2 Sound Driver and Utility (See Chapter 4)

5-3 CD-ROM Audio-in Connection (See Section 2-4)



Memo

ATI Rage IIC/Pro AGP Subsystem

The board supports both ATI Rage Pro or Rage IIC AGP chip for highend and mainstream graphics market. ATI Rage IIC AGP is a cost sentive and highly intergrated 2D, 3D and video accelerator. The ATI Rage Pro AGP is a high performance AGP chip with enhanced 2D, 3D, and video accelerator with AGP 2X.

6-1 Features

- Intergrated 3D, 2D, and Video accelertors with Triple 8-bit palette DAC with gamma correction for true WYSIWYG color. Pixel rates up to 200MHz.
- Full support of Direct 3D texture lighting
- DDC1 and DDC2+ Plug and Play monitor support
- Power management for full VESA Display Power Management Signaling (DPMS), and EPA Energy Star compliance. Also, register support for controller power reduction and DAC power down
- Deep command FIFO assures fast response to host command transfers for maximum CPU/host bus/controller efficiency and concurrent operation
- 32-bit wide memory mapped registers

6-2 Memory

- 4MB SGRAM at up to 100MHz memory clock, providing up to 800MB/Sec bandwidth

6-3 Operating Requirements

- To take advantage of the AGP mode, you must use Windows 95 version OSR2.1 or later. Make sure to install USBSUPP.EXE file from Microsoft

6-4 Driver and Utility Installation

- Graphics accelereator driver and Utility Installation (See Chapter 4)

6-5 Jumper Setting

- On-board VGA Chip Jumper (See Section 2-4)

6-6 Reference

Direct3D

- Direct3D is the next generation of real-time, interactive 3D technology for mainstream computer user on internet. Direct 3D is a complete set of real-time 3D graphics services that delivers fast software-based rendering of the full 3D pipeline (transformations, lighting and rasterization) and transparent access to hardware acceleration. Direct 3D is fully scalable, enabling all or part of the 3D rendering pipeline to be accelerated by hardware.

On Board I/O Addresses & IRQ Maps

System Resource	IRQ	I/O Address
1. Timer	IRQ0	040, 043
2. Keyboard	IRQ1	060, 064
3. Programmable INT	IRQ2	0020, 0021, 00A0, 00A1
4. COM2(B)	IRQ3	2F8, 2FF
5. COM1(A)	IRQ4	3F8, 3FF
6. Floppy	IRQ6	3F0, 3F7
7. LPT1	IRQ7	378, 37F
8. Real Time Clock	IRQ8	070, 071
9. PS/2 Mouse	IRQ12	060, 064
10.Math coprocessor	IRQ13	0F0, 0FF
11.IDE 1	IRQ14	1F0, 1F7
12.IDE 2	IRQ15	170, 177

⚠️ IRQ 5, 9, 10 and 11 are available for interface cards.



Memo

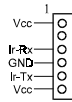
Quick Connector and Jumper Reference

CN1: WOL (Wake-on-LAN) Conn.

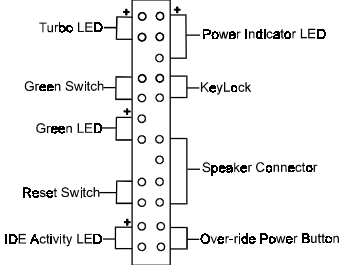


CN4: Creative's SB-Link connector (links AWE64D with PCI Bus Mastering)

CN5: Infrared connector



CN6: Front panel connector set



CN11: Power supply connector

CN15: FANII connector

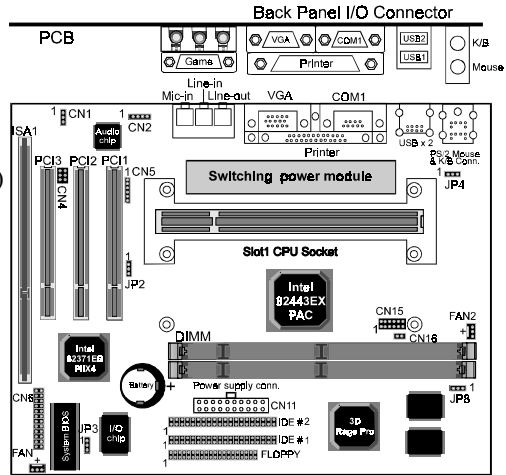
CN16: CPU temperature jumper

FAN1/FAN2: System/CPU cooling fan connector



JP2: On board Audio jumper

1~2 : Enabled
 2~3 : Disabled



*See*PU (Jumper free CPU installation) setting table

CPU Type	CPU Speed		
	External Clock	Frequency Ratio	Internal Clock
Pentium II processor	66	3.5	233
		4	266
		4.5	300
		5	333

JP3: Clear CMOS data jumper

1~2 : Normal (default)
 2~3 : Clear CMOS data

JP4: Power-on by keyboard jumper

1~2 : Disabled (default)
 2~3 : Enabled

JP8: On board VGA jumper

1~2 : Enabled
 2~3 : Disabled



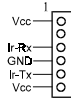
Quick Connector and Jumper Reference

CN1: WOL (Wake-on-LAN) Conn.

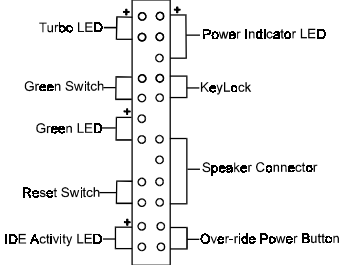


CN4: Creative's SB-Link connector (links AWE64D with PCI Bus Mastering)

CN5: Infrared connector



CN6: Front panel connector set



CN15: FANII connector

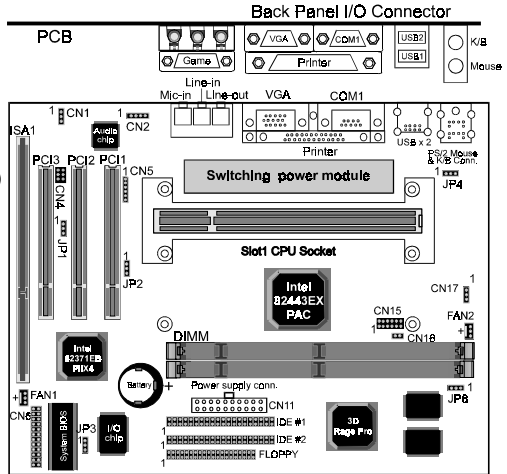
CN16: CPU temperature jumper

FAN1/FAN2: System/CPU cooling fan connector



JP1: Factory default

JP2: On board Audio jumper
 1~2 : Enabled
 2~3 : Disabled



SeePU (Jumper free CPU installation) setting table

CPU Type	CPU Speed		
	External Clock	Frequency Ratio	Internal Clock
Pentium II processor	66	3.5	233
		4	266
		4.5	300
		5	333

JP3: Clear CMOS data jumper

1~2 : Normal (default)
 2~3 : Clear CMOS data

JP4: Power-on by keyboard jumper

1~2 : Disabled (default)
 2~3 : Enabled

JP8: On board VGA jumper

1~2 : Disabled
 2~3 : Enabled

