

Quick Connector and Jumper Reference

CN1: WOL (Wake-on-LAN) connector

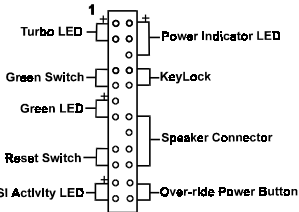


CN2: Creative's SB-Link connector links AWE64D with PCI Bus Mastering

CN3: Infrared connector



CN13: Front panel connector set



FAN1/FAN2/FAN3: System/CPU#2 /CPU#1 cooling fan connector



JP2: Clear CMOS data jumper

- 1~2 : Normal (default)
- 2~3 : Clear CMOS data

JP3: Power failure recovery jumper

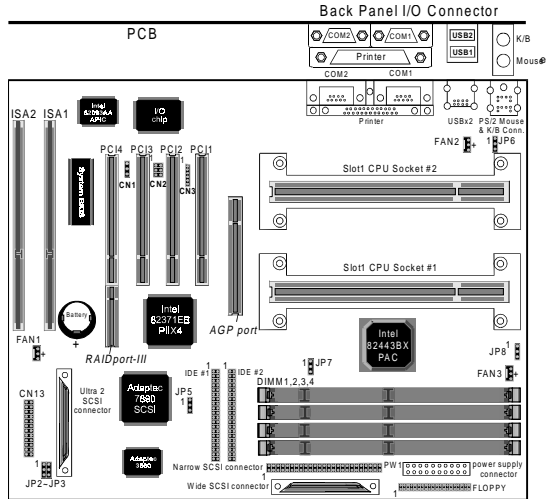
- 1~2 : Disabled (default)
- 2~3 : Enabled

JP5: On-board SCSI jumper

- 1~2 : Enabled (default)
- 2~3 : Disabled

JP6: Power on by keyboard

- 1~2 : Disabled
- 2~3 : Enabled



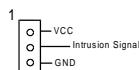
*See*PU (Jumper free CPU installation) setting table

| CPU Type | CPU Speed | | |
|----------------------|----------------|-----------------|----------------|
| | External Clock | Frequency Ratio | Internal Clock |
| Pentium II processor | 66 | 3.5 | 233 |
| | | 4 | 266 |
| | | 4.5 | 300 |
| | 100 | 5 | 333 |
| | | 3.5 | 350 |
| | | 4 | 400 |
| | | 4.5 | 450 |
| | | 5 | 500 |

JP7: External clock frequency jumper

- 1~2 : External clock determined by CPU (default)
- 2~3 : External clock is always 66MHz
- open : External clock is always 100MHz

JP8: Chassis intrusion monitoring connector





Memo