

**6B810/810CD/810E**  
**AT Form Factor**  
**Main Board**  
**User's Manual**  
( Ver. 2.0 )

## **Copyright**

Copyright ©2001 by this company. No part of this document may be reproduced, transmitted, transcribed, stored in a retrievable system, or translated into any natural or computer language, in any form or by any means without prior written permission. This manual and the information contained herein are protected by copyright. All rights reserved.

Manual version: 2.0  
Ref. No: 3053204  
Published in 2001

### **Warning and disclaimer**

This manual is designed to provide information about the Pentium® III / Celeron & Cyrix III main board. Meticulous efforts have been made to make this manual as accurate as possible, but no warranty or fitness is implied. All the information is provided on an 'as is' basis. The author and his corresponding publishing company shall have neither liability nor responsibility to any person or entity with respect to any loss or damages arising from the information contained in this manual or from the use of the system board that accompanies it.

Information contained in this manual is subject to change without notice. The manufacturer of the system board will not be held responsible for technical or editorial omissions made herein, nor for the incidental or consequential damages resulting from its furnishing, performance, functionality or use. Subsequent changes to this manual will be incorporated into the next edition. We welcome any suggestion regarding this manual or our computer products.

### **Trademarks**

**Intel® and Pentium® are registered trademarks of Intel® Corporation.**

**IBM® is a registered trademark of International Business Machines Corporation.**

**Microsoft is a registered trademark of Microsoft® Corporation.**

**PCI is a registered trademark of PCI Special Interest Groups.**

**AWARD® is a registered trademark of Award Software Inc.**

All other trademarks are the property of their respective owners.

# Table of Contents

<b>Chapter 1</b>	<b>Introduction.....</b>	<b>1</b>
1-1	Overview.....	1
1-2	Specifications.....	3
1-3	Limitation.....	5
1-4	Notice of Hardware Installation.....	6
1-5	Notice of CD Driver Installation.....	7
<b>Chapter 2</b>	<b>Installation.....</b>	<b>8</b>
2-1	Layout Reference.....	8
2-2	Jumper Setting.....	9
2-2-1	JP1 0: Audio Function Selection.....	9
2-2-2	WOL1:Wake up on LAN.....	10
2-2-3	CN11:Smart Card Reader Connector(Optional).....	11
2-2-4	CMOS Status.....	12
2-2-5	Turbo66/ Turbo100 Selection.....	13
2-3	Connectors .....	14
2-3-1	Front Panel.....	14
	COM1/COM2.....	16
	KBD/ PS2 MOUSE.....	17
	LPT1.....	18
	USB:USB(Universal Serial Bus) Connector.....	19
	Midi/Game Port & External Audio Connectors.....	20
2-3-2	ATX Power Supply Connector.....	21
2-3-3	AT Power Supply Connector.....	22
2-3-4	CPU Fan Connectors.....	23
2-3-5	:IrDA Connector.....	24
2-3-6	Floppy Disk Connector.....	25
2-3-7	IDE1&IDE2.....	26
2-3-8	CD_in.....	27
2-4	DIMM Memory Installation.....	28

<b>Chapter 3</b>	<b>BIOS Setup.....</b>	<b>29</b>
3-1	Award BIOS CMOS Setup.....	29
3-1-1	Standard CMOS Setup.....	30
3-1-2	Advanced BIOS Features.....	33
3-1-3	Chipset Features Setup.....	38
3-1-4	Integrated Peripherals.....	42
3-1-5	Power Management Setup.....	48
3-1-6	PNP/PCI Configuration Setup.....	51
3-1-7	Frequency/Voltage Control.....	53
3-1-8	Supervisor/User Password.....	55
3-1-9	Load Optimized Defaults.....	58
3-1-10	Save and Exit Setup.....	59
3-1-11	Quit Without Saving.....	60
<b>Chapter 4</b>	<b>Appendix.....</b>	<b>61</b>
4-1	Memory Map.....	61
4-2	I/O Map.....	62
4-3	Time & DMA Channels Map.....	63
4-4	Interrupt Map.....	64
4-5	RTC & CMOS RAM Map.....	65
4-6	Award BIOS Hard Disk Type.....	66
4-7	ISA I/O Address Map.....	68
<b>C h a p t e r</b>	<b>5</b>	<b>Q &amp;</b>
<b>A ... ..</b>		<b>7 0</b>
5-1	Error Messages During Power On Self Test.....	70

---

# Chapter 1 Introduction

## 1-1 Overview

The main board utilizes Intel' s i810 chipset integrated with new architects such as integrated graphic, sound, ULTRA DMA-66, USB & AMR is designed to Intel FC-PGA (or PPGA) Celeron / Coppermine Pentium III / VIA Cyrix III Socket-370 CPUs.

Intel' s i810 is a cost-effective yet high-performance chipset which has integrated graphics controller (i752) with a 24 Bit 230MHz RAMDAC & software MPEG2 decoder. It supports UMA (unified memory architect) mode up to 64MB with main memory or 4MB 3D texture memory (or called display cache, optional function ) that can accelerate its 3D graphics performance. The on board AC-97 CODEC chip provides perfect 3D sound function.

The main board also employs ITE I/O LPC controller with full Plug and Play device and keyboard password setup. It supports 2.88 MB Floppy, Dual 16550 compatible (with 16 bytes FIFO, up to 460K baud rate) serial Port, ECP (Enhanced Capabilities Port), EPP (Enhanced Parallel Port) parallel port, SPP(Standard Parallel Port), Infrared IrDA (HPSIR), and Amplitude Shift Keyed IR. (ASKIR) port and hardware monitor functions too.

The main board contains 3\*PCI for highest performance I/O add-on adapter cards. The system board supports three Bus Mastering Slots for high-performance I/O add-on cards. It supports Matrix Independent PCI routing for optimal multiple PCI adapter operations and is PCI2.2 specification compliant. 133MB/s data transfer rate can be compared to 33MB/s. It supports back to back sequential CPU to PCI Memory writes to PCI Burst Write for full PCI throughput. The AMR Slot is designed to fit low cost A(Audio) M(Modem) R(Riser) or MR card.

---

The main board has 2 dual in-line memory modules (DIMM) which can be installed with PC-100 SDRAM memory (PC-133 with i810E Chipset only). The memory subsystem supports up to 512 MB SDRAM of non-buffered 3.3V using standard 168-pin DIMM sockets.

The main board is strengthened with Power Management Wake up Event such as **“Modem ring on”** which is the new invention to enable PCs to be turned on via the network or modem function. These are also key benefits in PC operation, asset management, new system setup and power conservation.

In addition to the above hardware features, this main board is DIP switch design which allows user to set CPU frequency through BIOS. With this design, the disadvantages of setting hardware CPU jumpers are improved to a better and easier procedure through BIOS.

In conclusion, the system chipset and design make the main board a high performance, cost-effective, and energy efficient main board which meets a variety of price/performance levels. The main board is an ideal platform for the increasing requirements of today's and future's desktop applications.

- CPU Installation

This model is a jumperless main board, there is no selector needed for CPU frequency selection., Please load optimized Defaults in the CMOS setting., The main board will automatically detect CPU frequency (66/100/133 MHz)

---

## 1-2 Specifications

**Chipset :** The board can apply either i810DC-100 or i810E chipsets listed below:

Type	810-DC100	810-E
North	GMCH	GMCH-E
South	ICH	ICH
FSB	100MHz	133MHz
Display Cache	Yes, 100MHz	Yes, 100MHz
ATA	ATA66	ATA66
PCI REQ/GNT	6	6

**CPU :** can take current PPGA or FC-PGA Coppermine Socket-370 P!!!  
66/100/133MHz (133 MHz with i810E only) , Cyrix III & Celeron CPUs.

**Memory :** accepts 2 \* DIMM in PC-100/PC-133(with i810E only)  
specification memory

**VGA :** On chip 3D graphics function with shared 4MB 3D texture memory (or called display cache) (shared 4MB display cache optional )

**Sound :** Provides sound function with ALC200/ALC-100 AC-97 sound CODEC.

**Expansion Slot :** 3x PCI slots, 1 x AMR(used for AMR card or MR card)

**IDE :** support ULTRA DMA-66 mode

**PCB Board size :** 24.0 cm x 22.0cm, AT form factor

### Optional Items :

- TV-out (Chrontel CH7007 chip is needed)



*Caution : System needs at least PC-100 memory & over 5VSB 1 Ampere current ATX power supply for this main board*



---

**Other features (by ATX power)**

- Modem ring on
- Windows 95/98 power off
- Keyboard wake-up
- Mouse wake-up
- DMI, ACPI supported BIOS

---

## 1-3 Limitation

There are some limitations on i810 chipset shown as below:

### 1. Hardware:

- \* Must use PC-100 specification DIMM (PC-133 for i810E only)
- \* Must use over 5VSB 1 Ampere current. (ATX power supply only)

### 2. Software (Driver or BIOS):

- \* Windows 95 & 98 don't provide driver (utilities) for i810 chipset. User needs to install driver carefully before using this board

---

## 1-4 Notice of Hardware Installation

Before installing the main board hardware, note the following things.

### A. Check the package

If any of the below items is missing or damaged, contact the dealer from whom you purchase. Leave this main board in its original package until you are ready to install it. In the package, there are:

- the main board
- manual
- cables
- driver & utility / CD

### B. Make sure power is off.

During hardware installation, be sure that there is no power connected in this period.

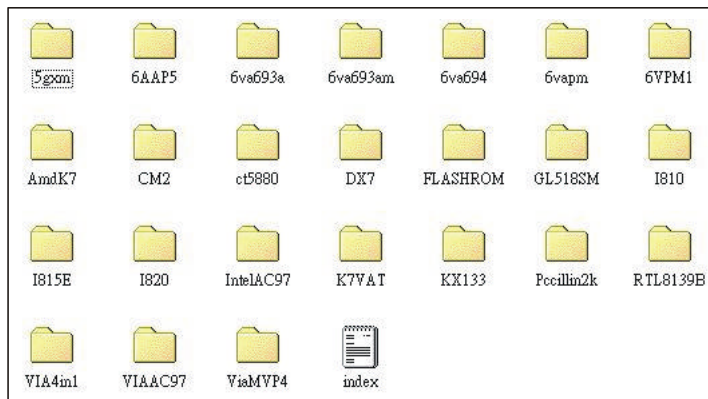
### C. Avoid ESD (Electrical Static Discharge)

While working with this main board, always wear a grounded wristband or ankle strap to avoid ESD (Electrical Static Discharge).

---

## 1-5 Notice of CD Driver Installation

This CD contains below drivers. The user must read “Index” (HTML format) before installing required drivers. Index offers all the information on all the drivers.



**CD driver is always updated with the latest version, so the actual CD content may be somewhat different from the above picture.**

1. **Main boards:** 5gxm, 6AAP5, 6va693a, 6va693am, 6va694, 6vapm, 6VPM1, Amdk7, I810, I815e, I820, K7vat, KX133(**please select i810 directory for this main board**)
2. **DX7:** Windows DirectX7 driver.
3. **Flashrom:** Bios flashupgrade utility .
4. **Intel\_INF/VGA/Audio:** Run Intel\_INF file under I810 Directory & Bus Master PCI IDE Driver will be automatically detected and installed. Then run VGA file under I810 directory ,the VGA driver will be installed. The last: run Audio driver. Driver of ALC100 & ALC200 is the same. Go to the IntelAC97 directory & run either ALC200 (or ALC100) setup.exe file.



***Due to “CIH” virus will damage BIOS completely, user needs to load Pc-cillin anti-virus software when sets up system.***

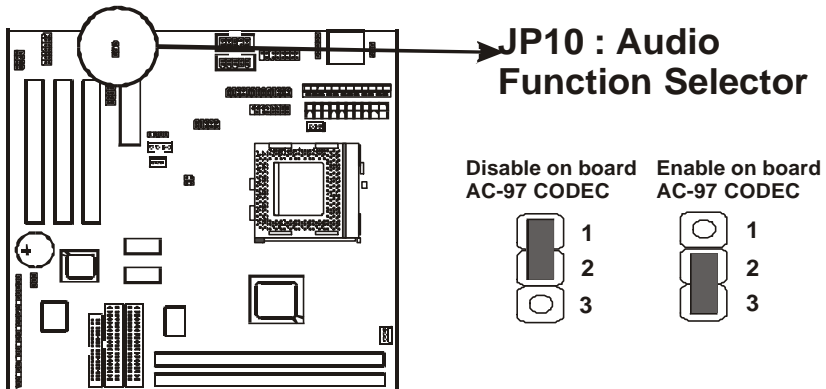


---

## 2-2 Jumper Setting

### 2-2-1 JP10 : Audio Function Selector

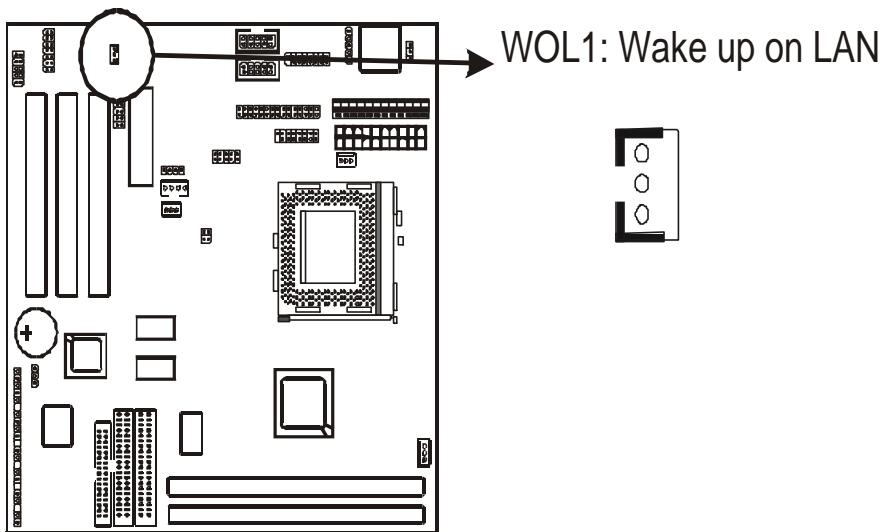
JP10 is a 3-pin jumper to enable/disable on board audio function. Set “1-2” to disable on board audio function and use AMR card installed on slot, set “2-3” to enable on board audio function and use MR card installed on slot.



---

## 2-2-2 WOL1 : Wake up on LAN

*Wake up on LAN*, marked as “WOL1,” is a 3-pin connector. To support this feature, a network card is required for the system and network management software must be installed too.



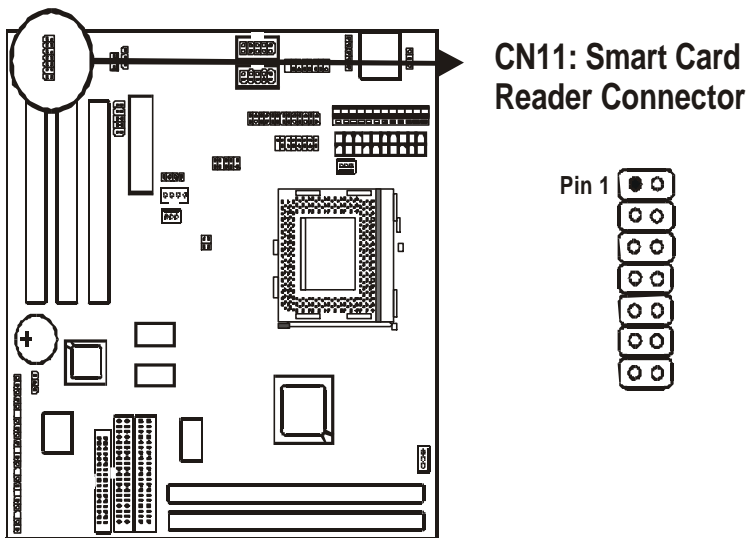
*WOL (Wake up on LAN) function requirement:*

*Power supply should be able to offer at least 750 mA driving ability to the signal “5V trickle voltage.”(needs ATX type power supply)*

---

### 2-2-3 CN11 : Smart Card Reader Connector(Optional)

The Smart Card is capable of providing secured storage facilities for sensitive personal information (such as Private keys, Account numbers, Passwords, Medical information, etc...). The Smart Card Reader can be used for a broad range of application in GSM, ID, pay TV, banking, ... and so forth.

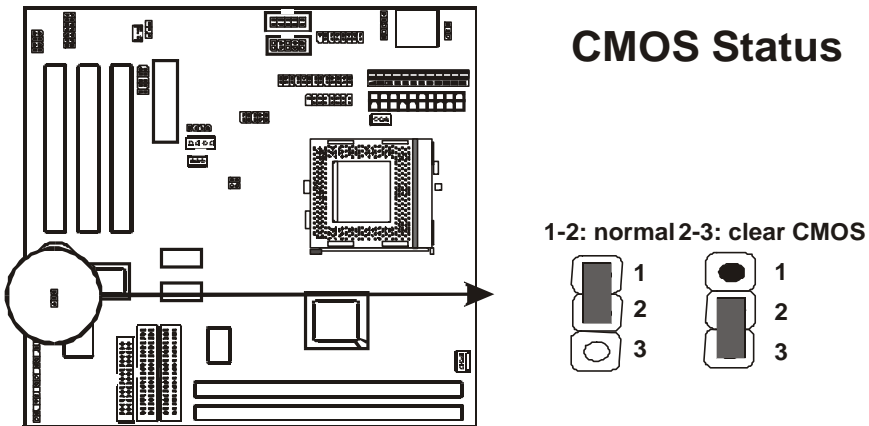




---

## 2-2-4 CMOS Status

Please clear CMOS if password is forgotten. Below is the details to clear CMOS.



### **Procedure to clear CMOS:**

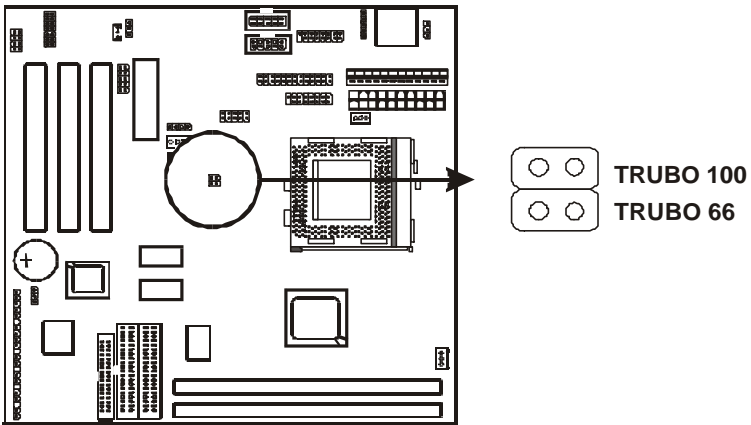
- Step 1: Shut down the system and disconnect the power supply from AC power.
- Step 2: Pull out the power supplies cable from the power connector.
- Step 3: Short the CMOS jumper by putting jumper cap on Pin 2-3 for a few seconds.
- Step 4: Return the cap to pin 1-2 at normal setup.
- Step 5: Link the power cable to the connector & connect AC power to power supply.
- Step 6: Turn on system power.

*If you'd like to set password, presses "Del" Key during system boot up to enter CMOS setup and establish a new password.*

---

## 2-2-5 Turbo 66/ Turbo 100 Selection

Turbo 66 / 100 selector allows user to overclock 66 MHz Front side bus CPU to 100 MHz FSB.



- The manufacturer shall have neither liability nor responsibility to any person of entity with respect to any loss or damager arising by users' overclocking.

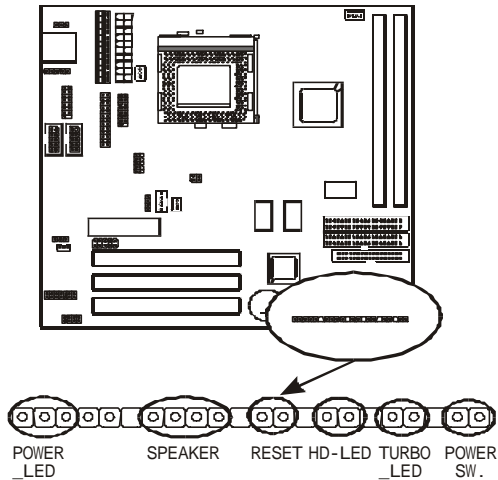
---

## 2-3 Connectors

There are many connectors on this main board. Refer to the following pages for details.

### 2-3-1 Front Panel

*Front panel* has connectors such as “POWER SW.,” “TRUBO-LED,” “HD-LED,” “RESET,” “SPEAKER,” “POWER-LED,” Please refer to the following for further information.



---

**POWER SW.** is a 2-pin connector which controls power “on” and “off”.

**HD-LED** (Hard Disk activity LED connector) is a 2-pin keyed Berg strip. It is used to connect to front panel Hard Disk LED.

**RESET** is a 2-pin keyed Berg strip, connected to the push button reset switch on the case's front panel. Shorting both pin 1 & pin 2 can reset the system, which is similar to the power off and then on again.

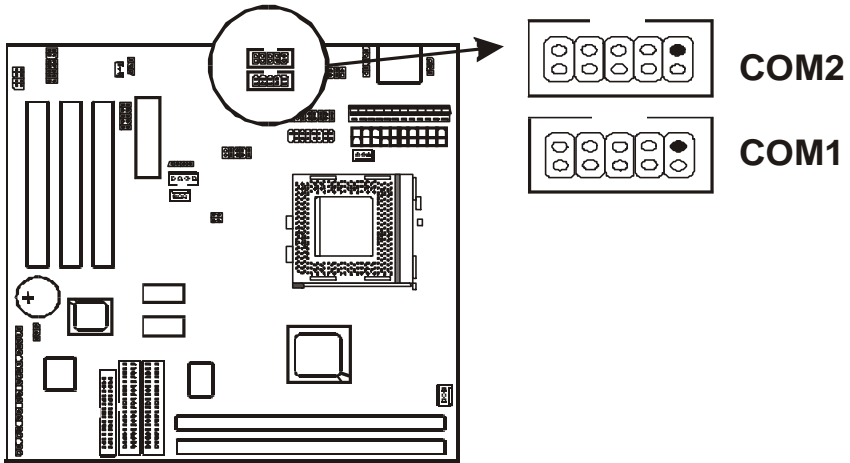
**SPEAKER** is a 4-pin keyed Berg strip. It is used to connect the case speaker to the main board for sound effect.

**PW-LED** is a 3-pin connector. It is used to connect to the LED on the case front panel. The LED shows the status of the power.

---

## COM1 & COM2

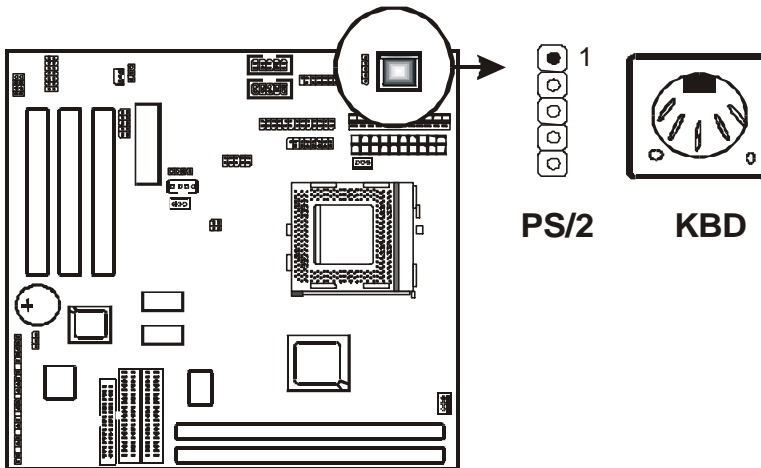
*The onboard serial port 1 and port 2* are the 9-pin D-subminiature male connector COM1 and COM2. COM1 and COM2 can be disabled in BIOS setup. Please refer to Chapter 3 “Integrated Peripherals” for more information.



---

## KBD/PS2 MOUSE

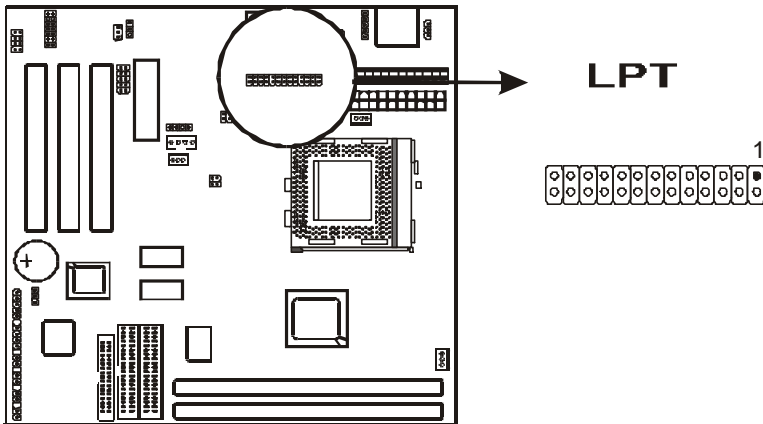
*The onboard PS/2 keyboard and mouse connectors are 6-pin Mini-Din connectors.*



---

## LPT

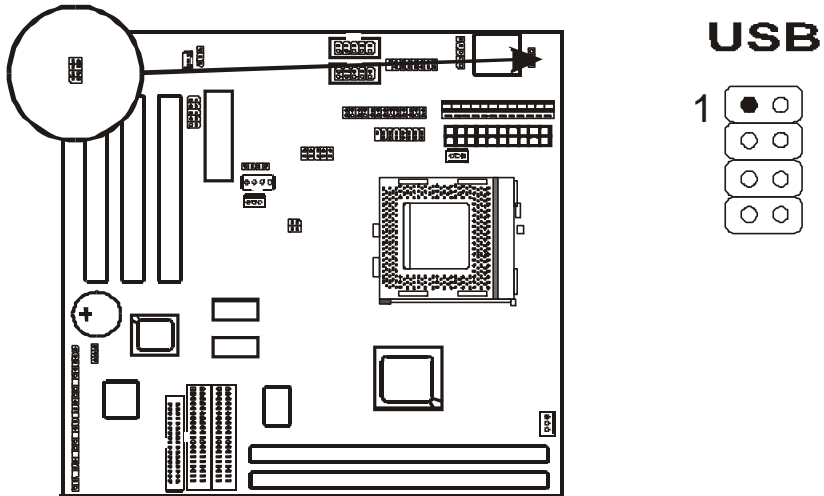
*The onboard parallel port* is a 25-pin female connector. It supports standard printer ports, Enhanced Parallel Port (EPP), Extended Capabilities Port (ECP), Standard Parallel Port (SPP).



---

## USB: USB (Universal Serial Bus) Connector

*Universal Serial Bus connector*, marked as “USB,” is used to connect USB devices. There are 2 USB connectors on this main board.

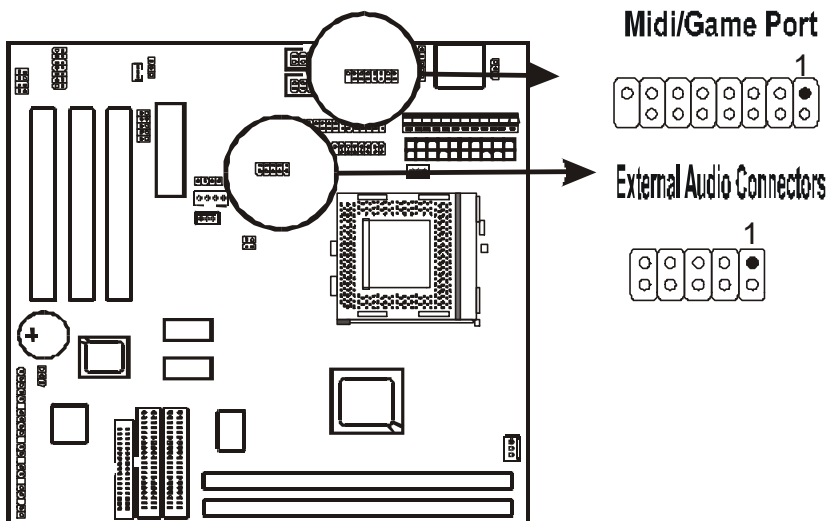




---

## Midi/Game Port & External Audio Connectors

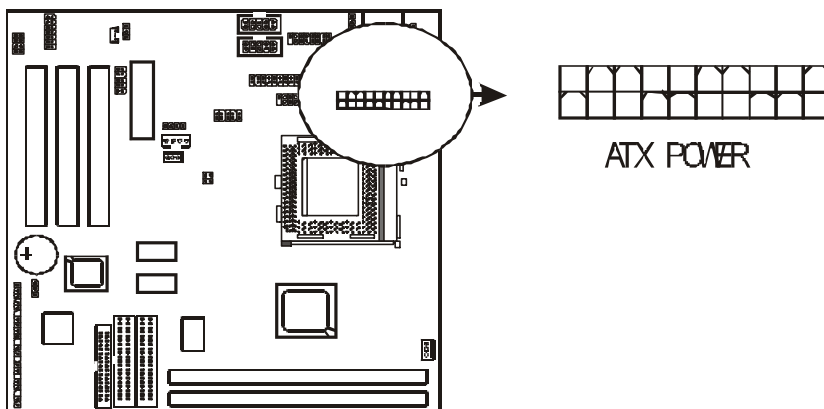
Midi/Game port has 15 pins connecting to the game joystick. External Audio connectors are “LINE-OUT, LINE-IN, MIC-IN” for audio functions.



---

## 2-3-2 ATX Power Supply Connector

*ATX power connector* has 20 pins, which is especially designed for ATX case. The ATX power supply supports the function of the “**Soft Power On Momentary switch**” which connects on the front panel switch to the 2-pin **SOFT-PWR** on the system board. While the power switch on the back of ATX power is turned on, the full power will not go into the system board until the front panel switch is momentarily pressed. Push the switch again to turn off the power to the system board.

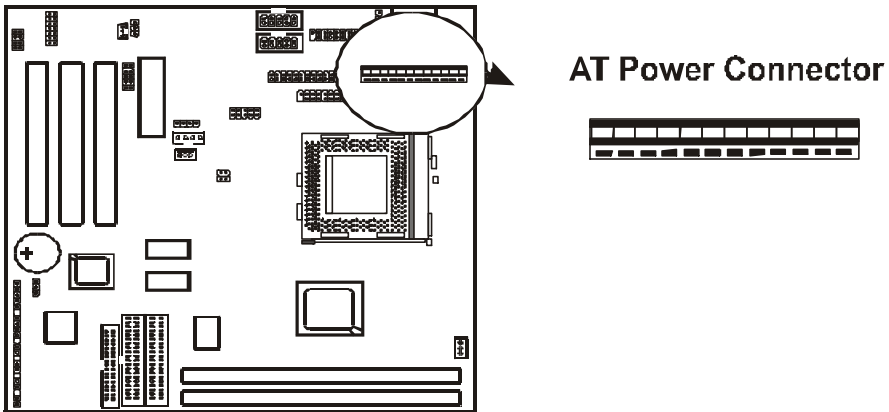


*To support i810 chipset, we suggest that Pin 17 signal 5VSB on ATX Power supply should be able to offer at least 1A current(I) driving ability.*

---

### 2-3-3 AT Power Supply Connector

The main board supports standard AT and ATX power supply. AT Power supply has 12 pins.

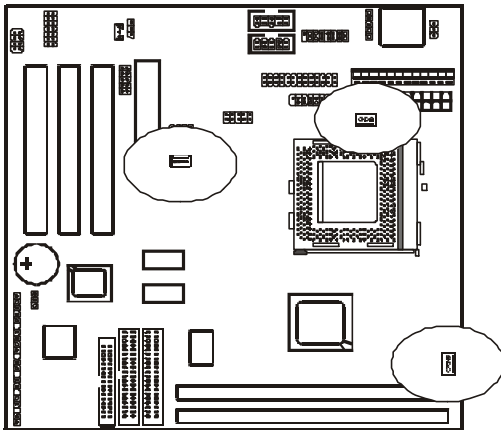


Pin	Signal	Pin	Signal
1	POWER GOOD	7	GROUND
2	+5V DC	8	GROUND
3	+12V DC	9	-5V DC
4	-12V	10	+5V DC
5	GROUND	11	+5V DC
6	GROUND	12	+5V DC

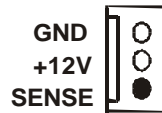
---

## 2-3-4 CPU Fan Connectors

*There are 3 fan connectors* on this system board, and it is marked as “CPUFAN”. Each fan connector has three pins.



### Fan Signal

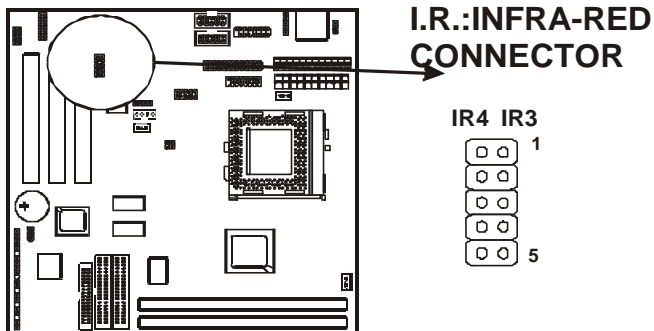


---

## 2-3-5 I.R. : IrDA Connector

**IR connector** supports wireless infrared module. With this module and application software like Laplink, or Win95 Direct Cable Connection, user can transfer data to or from laptops, notebooks, PDA and printers. This connector supports **HPSIR**, **ASKIR**, and **Fast IR**.

Attach Infrared module to IR connector. Be sure to put in the right direction during installation.

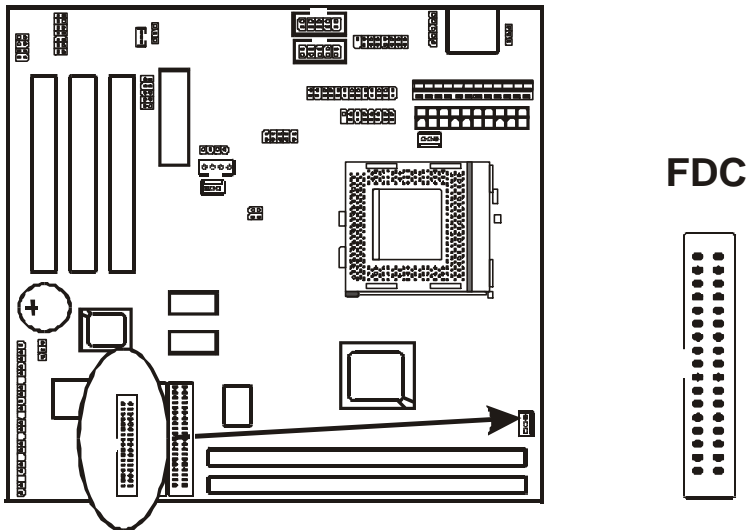


	<b>IR3(normal IR)</b>	<b>IR4(consumer IR)</b>
<b>1</b>	VCC	VCC
<b>2</b>	NC	NC
<b>3</b>	IRRX	CIRRX
<b>4</b>	GND	GND
<b>5</b>	IRTX	CIRTX

---

## 2-3-6 Floppy Disk Connector

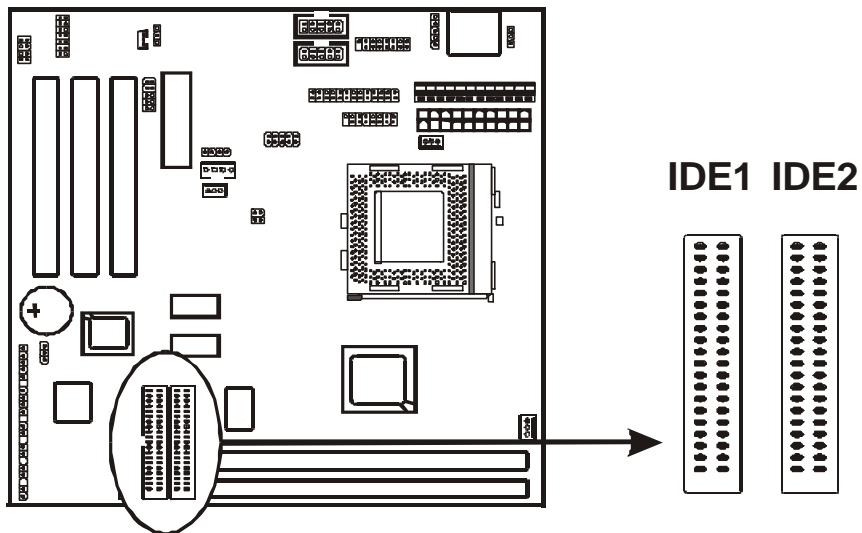
*Floppy Disk Connector* has 34 pins and is used to attach the floppy drive cable.



---

### 2-3-7 IDE1 & IDE2

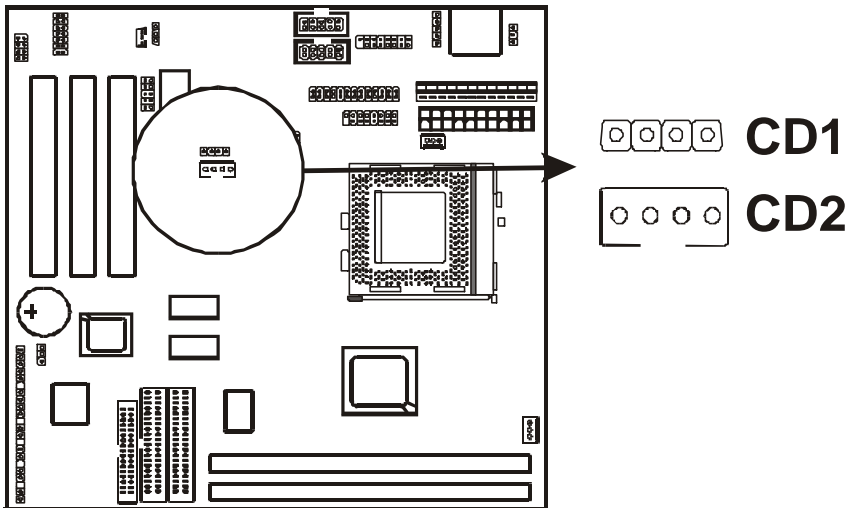
*IDE1 and IDE2* are 39-pin IDE connectors (Ultra 66). **IDE1** is primary channel, and **IDE2** is secondary channel. Each channel supports 2 IDE devices, and 4 devices in total for this main board.



---

### 2-3-8 CD-in

CD-in is a CD ROM external audio input signal to line-out(speaker) of the main board.



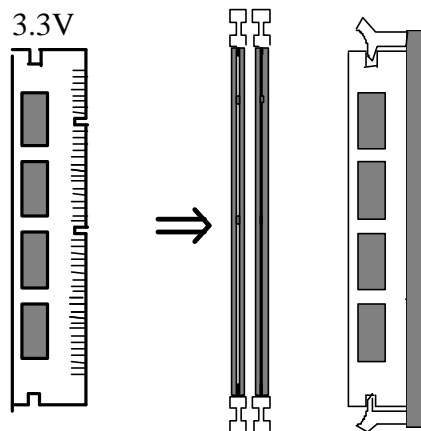


---

## 2-4 DIMM Installation

Please make sure DIMM is 3.3V DIMM. Both DIMM1 and DIMM2 support 8 MB, 16 MB, 32 MB, 64 MB, and 128MB. Maximum memory for **SDRAM is up to 512 MB**. The user may insert DIMM modules in either DIMM1, or DIMM2.

Insert the module as shown. Due to different number of pins on either side of the breaks, the module will only fit in the direction as shown. SDRAM DIMM modules have different pin contacts on each side and therefore have a higher pin density.



*SDRAM memory supports PC-100 DIMM or above.*

---

## Chapter 3 BIOS Setup

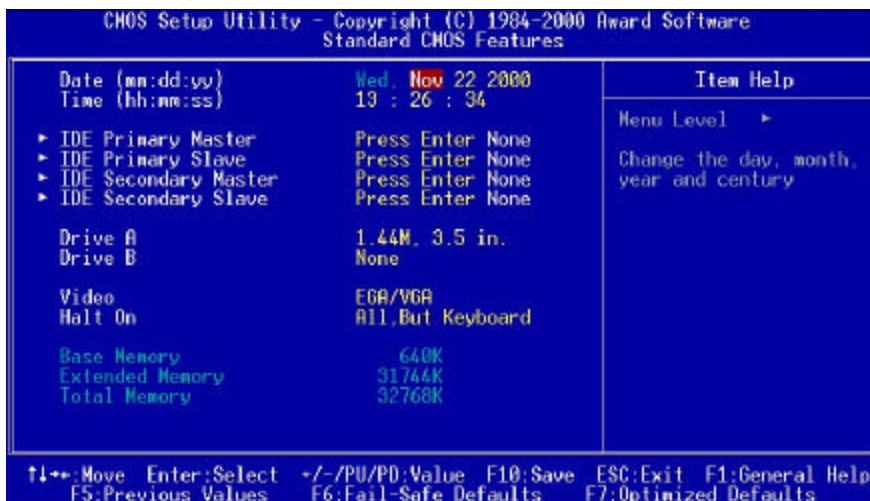
### 3-1 Award® BIOS CMOS Setup



The menu displays all the major selection items and allows user to select any of the shown item. The selection is made by moving cursor (press any direction key) to the item and press <Enter> key. An on-line help message is displayed at the bottom of the screen as cursor is moves to various items which provides user better understanding of each function. When a selection is made, the menu of the selected item will appear. So the user can modify associated configuration parameters.

---

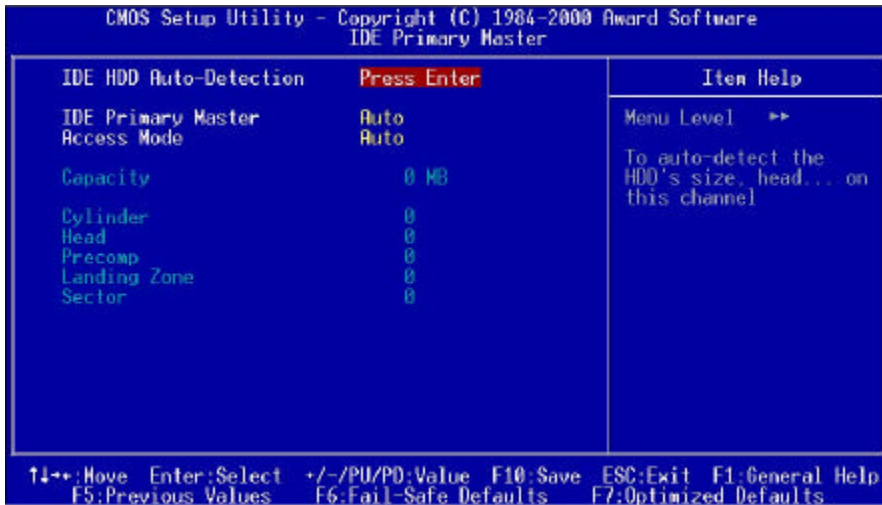
### 3-1-1 Standard CMOS Setup



The "Standard CMOS Setup" allows user to configure system setting such as **current date** and **time**, **type of hard disk drive** installed in the system, **floppy drive type**, and the type of **display monitor**. Memory size is auto detected by the BIOS and displayed for your reference. When a field is highlighted (direction keys to move cursor and <Enter> key to select). The entries in the field will be changed by pressing <PageDown> or <PageUp> key or user can enter new data directly from the keyboard.

---

## Hard Disk Configurations



**1. IDE HDD Auto-Detection** : press this item to Auto Detect the HDD type.

**2. IDE Primary Master** : select "AUTO" to detect the mode type automatically. Select "NORMAL" users have to redefine the following 4-8 items according to HDD. "NONE" means this item disabled.

**3. ACCESS MODE** : select "AUTO" to detect the mode type automatically. If your hard disk supports the **LBA** mode, select "**LBA**" or "**LARGE**". However, if your hard disk cylinder is more than 1024 and does not support the LBA function, you have to set at "**LARGE**." Select "**NORMAL**" if your hard disk supporting cylinder is below 1024.

- 
- 4. Cylinder** : the cylinder number of the hard disk.
- 5. HEAD** : the read/write head number of hard disk. The range is from "1" to "16".
- 6.PRECOMP**: the cylinder number at which the disk drive changes the write timing.
- 7.Landing Zone**: the cylinder number that the disk drive heads (read/write) are seated when the disk drive is parked.
- 8.SECTOR** : the sector number of each track defined on the hard disk. The range is from "1" to "64".



**Note1:** if hard disk primary master/slave and secondary master/slave were set to "auto", the hard disk size and model will be auto detected on display during POST.

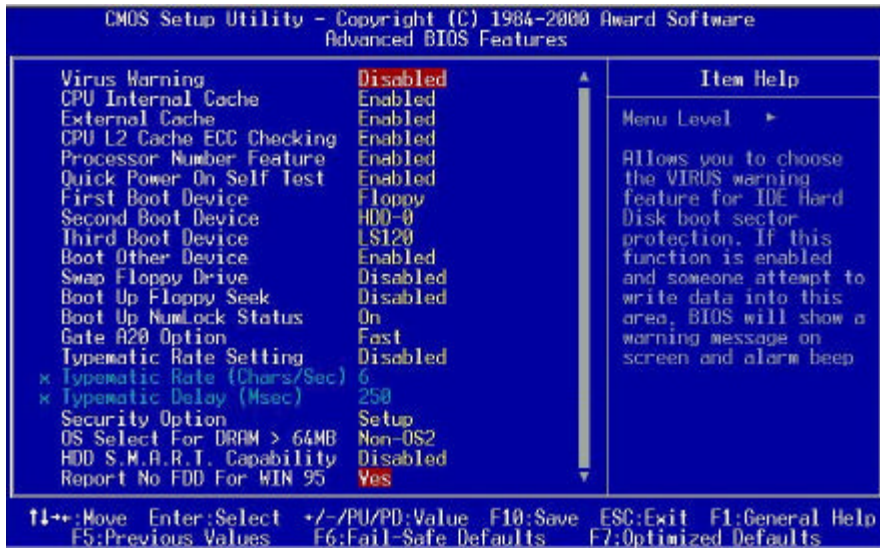


**Note2:** "halt on" is to determine when to halt the system by the BIOS if error occurred during POST.

---

## 3-1-2 Advanced BIOS Features

Menu below shows all of the manufacturer's default values of this main board. Move the cursor by pressing <PageDown>/- or <PageUp>/+ key to modify the parameters, press [F1] key to display help message of the selected item. This setup program also provide 2 convenient ways to load the default parameter data from BIOS [F6] and [F7] area if shown data is corrupted. This provides the system a capability to recover from any possible error.



---

***VIRUS WARNING***

**:Enabled**

**:Disabled** (default)

***CPU INTERNAL CACHE***

**Enabled :** enable L1 cache(default)

**Disabled:** disable L1 cache

***EXTERNAL CACHE***

**Enabled** (default): enable L2 cache

**Disabled:** disable L2 cache

***CPU L2 CACHE ECC CHECKING***

**Enabled** (default): enable L2 cache ECC checking

**Disabled:** disable L2 cache ECC checking

***PROCESSOR NUMBER FEATURE***

**Enabled** (default)

**Disabled**

***QUICK POWER ON SELF TEST***

This category speeds up power on self test.

**Enabled** (default) : BIOS will shorten or skip some check items.

**Disabled:** normal speed

***FIRST BOOT DEVICE***

This category determines which drive the system searches first. System will search in turn for floppy disk drive; then hard disk drive, and finally Floppy drive. Default value is “**FLOPPY**”. Options are as below:

**FLOPPY; LS120; HDD-0; SCSI; CDROM; HDD-1; HDD-2; HDD-3; ZIP1000; LAN; Disabled**

---

### ***SECOND BOOT DEVICE***

This category determines which drive the system searches first. System will search in turn for floppy disk drive; then hard disk drive, and finally Floppy drive. Default value is “**HDD-0**”. Options are as below:

**FLOPPY; LS120; HDD-0; SCSI; CDROM; HDD-1; HDD-2; HDD-3; ZIP100; LAN; Disabled**

### ***THIRD BOOT DEVICE***

This category determines which drive the system searches first. System will search in turn for floppy disk drive; then hard disk drive, and finally Floppy drive. Default value is “**LS/ZIP**”. Options are as below:

**FLOPPY; LS/ZIP; HDD-0; SCSI; CDROM; HDD-1; HDD-2; HDD-3; LAN; Disable**

### ***BOOT UP OTHER SEEK***

BIOS will determine if the floppy disk drive is 40 or 80 tracks. 360k type is 40 tracks while 720K/ 1.2M and 1.44M are all 80 tracks. Default value is **enabled**.

### ***SWAP FLOPPY DRIVE***

**Enabled:** floppy A&B will be swapped.

**Disabled**(default): floppy A&B will not be swapped.

### ***BOOT UP NUMLOCK STATUS***

**:On** (default)

**:Off**

### ***GATE A20 OPTION***

**:Normal**

**:Fast** (default)



---

### ***TYPOMATIC RATE SETTING***

This determines the typematic rate.

**Enabled:** enable typematic rate and typematic delay programming.

**Disabled (default) :** disable typematic rate and typematic delay programming. The system BIOS will use default value of this 2 items and the default is controlled by keyboard.

### ***TYPOMATIC RATE(CHARS/SEC)***

6 : 6 Characters Per Second (default)

8 : 8 Characters Per Second

10 :10 Characters Per Second

12 : 12 Characters Per Second

15 : 15 Characters Per Second

20 : 20 Characters Per Second

24 : 24 Characters Per Second

30 : 30 Characters Per Second

### ***TYPOMATIC DELAY (MSEC)***

This is the interval between the first and second character displayed.

**250** : 250 msec (default)

**500** : 500 msec

**750** :750 msec

**1000** :1000 msec

### **SECURITY OPTION**

<b>Item</b>	<b>Function</b>	<b>Note</b>
Setup (default)	Security protection in CMOS setup menu	After setting password in BIOS CMOS “ <b>Supervisor Password</b> ” or <b>User Password,</b> ” it protects BIOS CMOS setup.
System	Security protection in system boot-up & BIOS setup	This function secures the system under system boot-up and BIOS setup after setting password.

---

***OS SELECT FOR DRAM > 64MB***

This option is especially set for OS2 operating system. Set “**OS2**” for RAM memory over 64MB and set “**Non-OS2**” for other operating systems like Windows®95/98 or NT.

**Non-OS2** (default)

**OS2**

***HDD S.M.A.R.T CAPABILITY***

**Enabled**

**Disabled** (default)

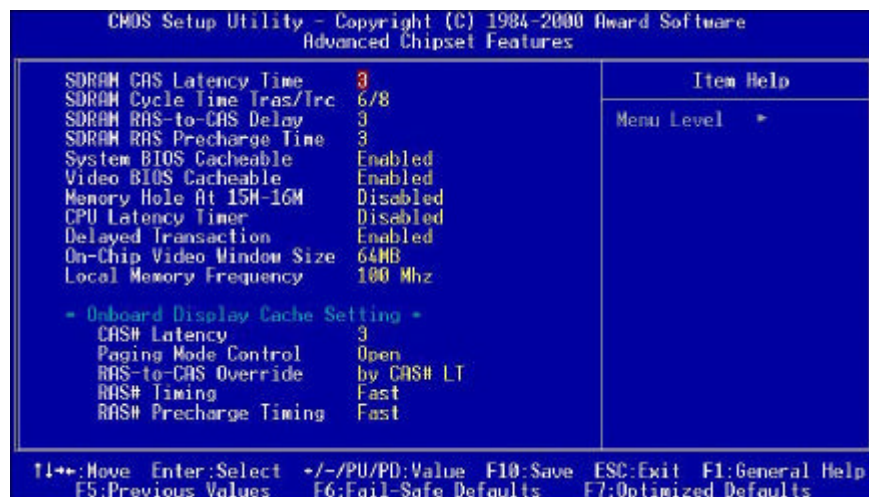
***REPORT NO FDD FOR WIN 95***

**No** (default)

**Yes**

---

### 3-1-3 Chipset Features Setup



---

***SDRAM CAS LATENCY TIME***

: 2

: 3 (default)

***SDRAM CYCLE TIME TRAS/TRC***

: 5/7

: 6/8 (default)

***SDRAM RAS- TO- CAS DELAY***

This controls the DRAM page miss and row miss leadoff timing.

: 2

: 3 (default)

***SDRAM RAS PRECHARGE TIME***

SDRAM precharge time by RAS.

: 2

: 3 (default)

***SYSTEM BIOS CACHEABLE***

define whether system BIOS area cacheable or not.

: **Enabled** (default)

: **Disabled**

***VIDEO BIOS CACHEABLE:*** to define whether video BIOS area cacheable or not.

: **Enabled** (default)

: **Disabled**

***MEMORY HOLE AT 15M-16M:*** this field enables a memory hole in main memory space. CPU cycles matching an enabled hold are passed on to PCI note that a selection can not be changed while the L2 cache is enabled.

: **Enabled**

: **Disabled** (default)

---

***CPU LATENCY TIMER:***

**:Enabled**

**:Disabled (default)**

***DELAY TRANSACTION***

**:Enabled (default)**

**:Disabled**

***ON-CHIP VIDEO WINDOW SIZE***

**:64M(default)**

**:32M**

**:Disabled**

***LOCAL MEMORY FREQUENCY***

**:100MHz(default)**

**:133MHz**

***ONBOARD DISPLAY CACHE SETTING***

**CAS# Latency**

**:3(default)**

**:2**

**PAGING MODE CONTROL**

**:Close**

**:Open (default)**

**RAS-TO-CAS OVERRIDE**

**:by CAS # LT(default)**

**:Override(2)**

**RAS# TIMING**

**:Slow**

**:Fast (default)**

---

**RAS# PRECHARGE TIMING**

**:Slow**

**:Fast (default)**

---

### 3-1-4 Integrated Peripherals



---

***ONCHIP PRIMARY PCI IDE***

**:Enabled**(default)

**:Disabled**

***ONCHIP SECONDARY PCI IDE***

**:Enabled**(default)

**:Disabled**

***IDE PRIMARY MASTER PIO***

This feature detects your primary master hard disk device.

**:Auto** (default)

**:Mode 0,1,2,3,4**

***IDE PRIMARY SLAVE PIO***

This feature detects your primary slave hard disk device.

**:Auto** (default)

**:Mode 0,1,2,3,4**

***IDE SECONDARY MASTER PIO***

This feature detects your secondary master hard disk device.

**:Auto** (default)

**:Mode 0,1,2,3,4**

***IDE SECONDARY SLAVE PIO***

This feature detects your secondary slave hard disk device.

**:Auto** (default)

**:Mode 0,1,2,3,4**

***IDE PRIMARY MASTER UDMA***

**:Auto**(default)

**:Disabled**



---

***IDE PRIMARY SLAVE UDMA***

**:Auto**(default)

**:Disabled**

***IDE SECONDARY MASTER UDMA***

**:Auto**(default)

**:Disabled**

***IDE SECONDARY SLAVE UDMA***

**:Auto**(default)

**:Disabled**

***USB CONTROLLER***

**:Enabled**(default)

**:Disabled**

***USB KEYBOARD SUPPORT***

**:Enabled**

**:Disabled**(default)

***INIT DISPLAY FIRST***

**:PCI Slot** (default)

**:Onboard**

***AC97 AUDIO***

**:Enabled**(default)

**:Disabled**

***AC97 MODEM***

**:Enabled**

**:Disabled**(default)

---

***IDE HDD BLOCK MODE***

**:Enabled**(default)

**:Disabled**

***POWER ON FUNCTION***

**:Any Key**(default)

**:Button Only**

**:Keyboard 98**

**:Password**

**:Hot Key**

**:Mouse Move**

**:Mouse Click**

***POWER ON FUNCTION***

**:enter** (default)

***HOT KEY POWER ON***

**:Ctrl-F1** (default) ~ **Ctrl-F12**

***ONBOARD FDC CONTROLLER***

Select Enabled if your system has a floppy disk controller(FDC) installed on the system board and if you wish to use it.

**:Enabled** (default)

**:Disabled**

***ONBOARD SERIAL PORT 1***

Select an address and corresponding interrupt for the first serial port.

**:Auto** (default)

**:2F8/IRQ3, 3E8/IRQ4, 2E8/IRQ3, 3F8/IRQ4, Disabled**

***ONBOARD SERIAL PORT 2***

Select an address and corresponding interrupt for the second serial port.

**:Auto** (default)

**:2F8/IRQ3, 3E8/IRQ4, 2E8/IRQ3, 3F8/IRQ4, Disabled**

---

### ***UART MODE SELECT***

**:Normal** (default)

**:IrDA**

**:ASKIR**

**:SCR**

### ***UR2 DUPLEX MODE***

Select the value required by the IR device connected to the IR port. Full-duplex mode permits simultaneous two-direction transmission. Half-duplex mode permits transmission in one direction only at a time.

**:Full**

**:Half** (default)

### ***ONBOARD PARALLEL PORT***

**:378/IRQ7** (default)

**:278/IRQ5**

**:3BC/IRQ7**

**:Disabled**

### ***PARALLEL PORT MODE***

**:SPP** (default)

**:EPP**

**:ECP**

**:ECP + EPP**

### ***ECP MODE USE DMA***

Select a DMA channel for the parallel port for using during ECP mode.

**:3**

**:1** (default)

### ***PWRON AFTER PWR-FAIL***

**:Off** (default)

**:On, Former-Sts**

---

***GAME PORT ADDRESS***

**:201** (default)

**:209, Disabled**

***MIDI PORT ADDRESS***

**:300, 330**

**:Disabled** (default)

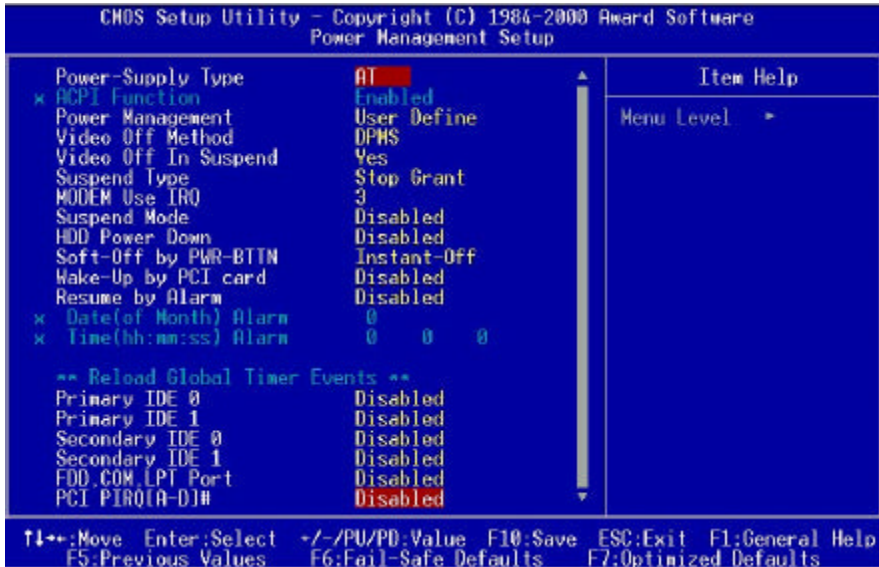
***MIDI PORT IRQ***

**:5**

**:10** (default)

---

### 3-1-5 Power Management Setup



#### **POWER SUPPLY TYPE**

:AT(default)

:ATX

#### **ACPI FUNCTION**

:Enabled(default)

:Disabled

#### **POWER MANAGEMENT**

:User Define(default)--users can configure their own power management

:Min Saving

:Max Saving

---

***VIDEO OFF METHOD***

**:DPMS**(default)

**:Blank Screen**

**:V/H Sync+Blank**

***VIDEO OFF IN SUSPEND***

**:Yes** (default)

**:No**

***SUSPEND TYPE***

**:Stop Grant** (default)

**:PwrOn Suspend**

***MODEM USE IRQ***

**:3** (default)

**:4, 5, 7, 9, 10, 11, NA**

***SUSPEND MODE***

**:Disabled**(default), 1min --- 2 min, 4 min, 8 min, 12 min, 20 min, 30 min, 40 min,  
1 Hour

***HDD POWER DOWN***

**:Disabled**(default), 1 min --- 15 min

***SOFT-OFF BY PWR-BTTN***

Pressing the power button for more than 4 seconds forces the system to enter the Soft-Off state when the system has “hung”.

**:Instant-Off** (default)

**:Delay 4 Sec.**

***WAKE-UP BY PCI CARD***

**:Enabled**

**:Disabled** (default)

---

### ***RESUME BY ALARM***

When Enabled, you can set the date and time on RTC (real-time clock) alarm awoken a system which has been powered down.

**:Enabled**

**:Disabled** (default)

### ***DATE(OF MONTH) ALARM/TIME(HH:MM:SS)***

You can set the date (of month) and timer (hh:mm:ss), any event occurring will awoken a system which has been powered down.

### ***PRIMARY IDE 0/1***

**:Enabled** --- Enable monitor Primary IDE 0/1 for Green event.

**:Disabled**(default) --- Disable this function.

### ***SECONDARY IDE 0/1***

**:Enabled** --- Enable monitor Secondary IDE 0/1 for Green event.

**:Disabled**(default) --- Disable this function

### ***FDD, COM, LPT PORT***

**:Enabled**

**:Disabled** (default)

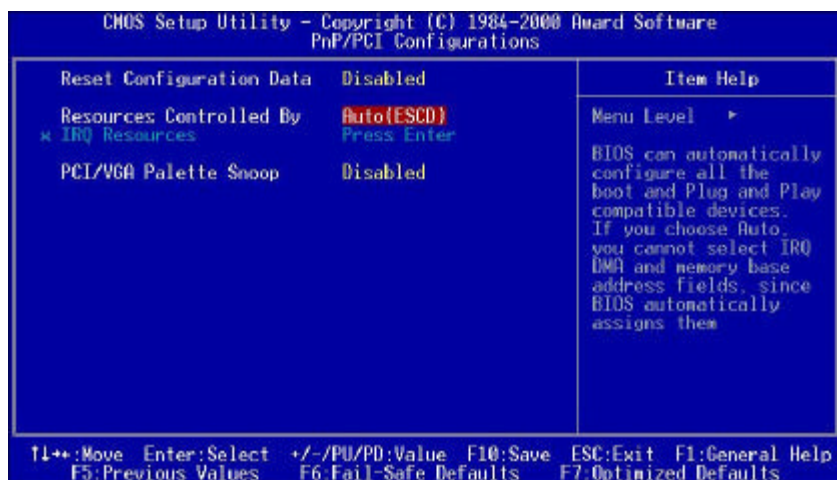
### ***PCI PIRQ [A-D]#***

**:Enabled**

**:Disabled** (default)

---

### 3-1-6 PNP / PCI Configuration Setup





---

### ***RESET CONFIGURATION DATA***

**:Disabled**(default)

**:Enabled--** to reset “**Extended System Configuration Data(ESCD)** when you exit setup if you have installed a new add-on card and the system reconfiguration has caused such a serious conflict that the operating system can not boot up.

### ***RESOURCES CONTROLLED BY***

**:Manual**

The table will show the below items: “**Reset Configuration Data, IRQ-3 assigned to, DMA-0 assigned to.**” The user can adjust the shown items as required.

**:Auto** (default)

The table will not show the above items, and the system will automatically assign the above setup.

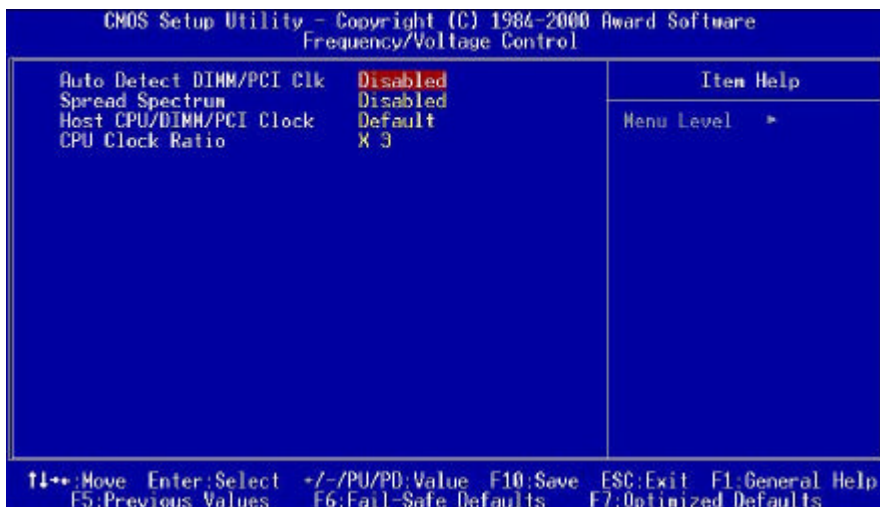
### ***PCI/VGA PALETTE SNOOP***

**:Disabled** (default)

**:Enabled**

---

### 3-1-7 Frequency/Voltage Control



---

***AUTO DETECT DIMM/PCI CIK***

**: Enabled**

**: Disabled (default)**

***SPREAD SPECTRUM***

**:Enabled**

**:Disabled(default)**

***CPU HOST/PCI CLOCK***

**: Default**

**: 66/100/133MHz;68/102/34MHz;75/112/37MHz;100/100/33MHz;  
103/103/34 MHz;124/124/41 MHz ; 133/133/44 MHz ;  
140/140/46MHz;150/150/50MHz;133/100/33MHz;140/105/35MHz;  
150/112/37 MHz ;**

***CPU RATIO***

**: x 3 (Default)**

**: x 3.5 ; x 4 ; x 4.5 ; x 5 ; x5.5 ; x 6 ; x 6.5 ; x 7 ; x 7.5; x 8**



*is selection is reserved for manufacturers to pass CE test only not available for users.*

---

### 3-1-8 Supervisor/User Password

The "Supervisor/User Password setting" utility sets the security protection. There are two kinds of password functions in the setup menu : one is "Supervisor Password," and the other is "User Password." Their difference is:

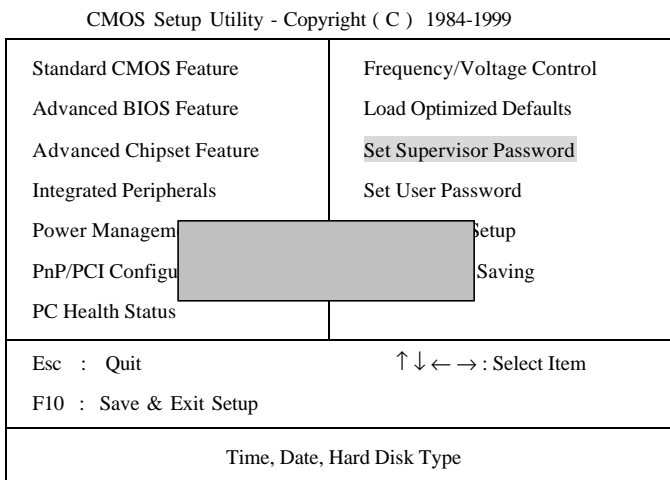
Supervisor Password: this function allows you the right to change the options of setup menu.

User Password: this function only allows you to enter the setup menu but not to change the options of the setup menu except "USER PASSWORD," "SAVE & EXIT SETUP," and "EXIT WITHOUT SAVING."

#### 1. How to set "Supervisor Password" & "User Password"

The setup of "Supervisor Password" and "User Password" has the same steps.

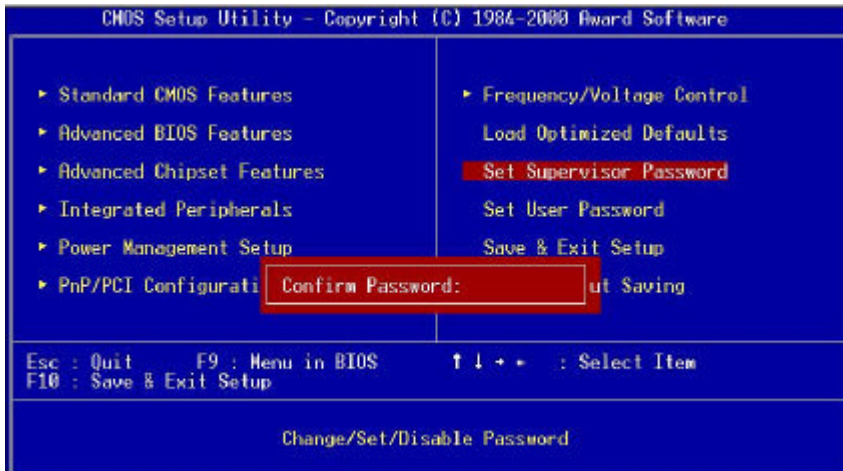
Step 1: Enter Password --Press <Enter> after appointing the password.



---

## Step 2: Confirm Password

Type the password again and press <Enter>



If you forget password, please clear CMOS.  
(refer to jumper RTC1)

## Step 3: Set “Security Option” in “BIOS Features Setup”

After setting password, enter “Security Option” in “BIOS Features Setup.” There are 2 options “Setup” & “System.” “Setup” will only secure CMOS setup through password. “System” is to secure PC system and password is required during system boot-up in addition to CMOS setup.

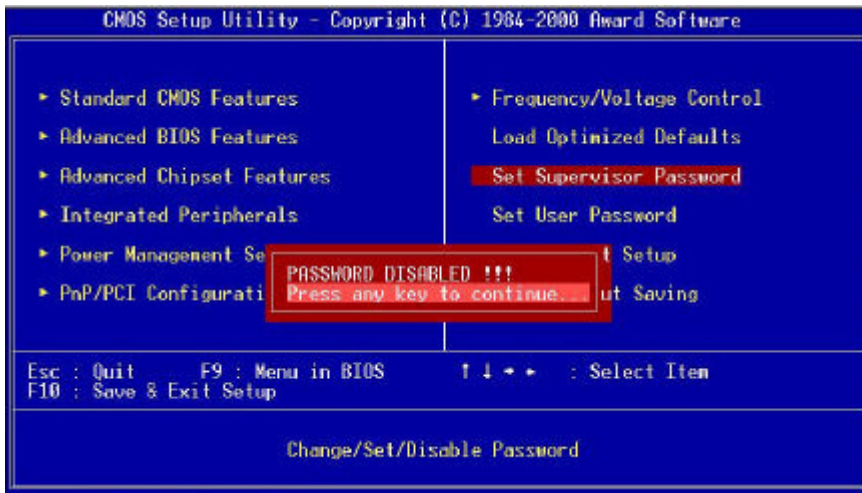
---

## 2. How to Disable “Supervisor Password” & “User Password”

Step 1: Go to CMOS Setup Menu (need to key in password first)

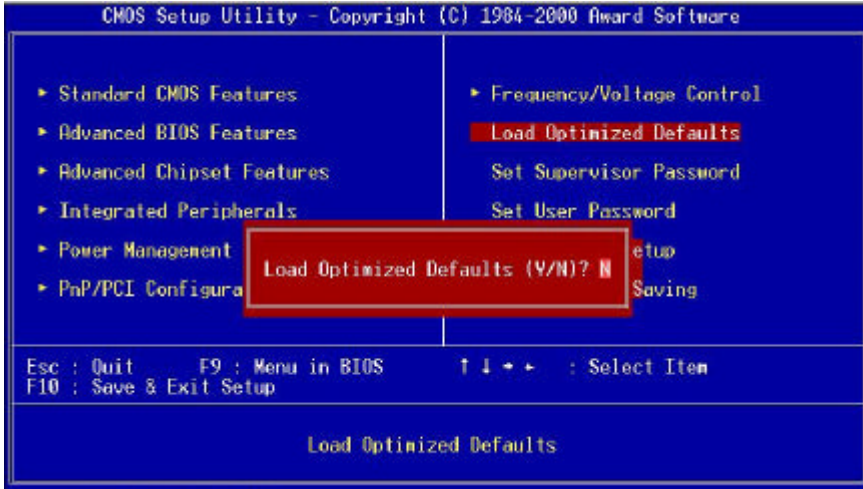
Step 2: Enter “Supervisor Password” or “User Password”

When it shows “Enter Password”, press the <Enter> key instead of entering a new password when "ENTER PASSWORD" appears. It will inform “PASSWORD DISABLED PRESS ANY KEY TO CONTINUE.” Then, press any key as instructed to disable the password.



---

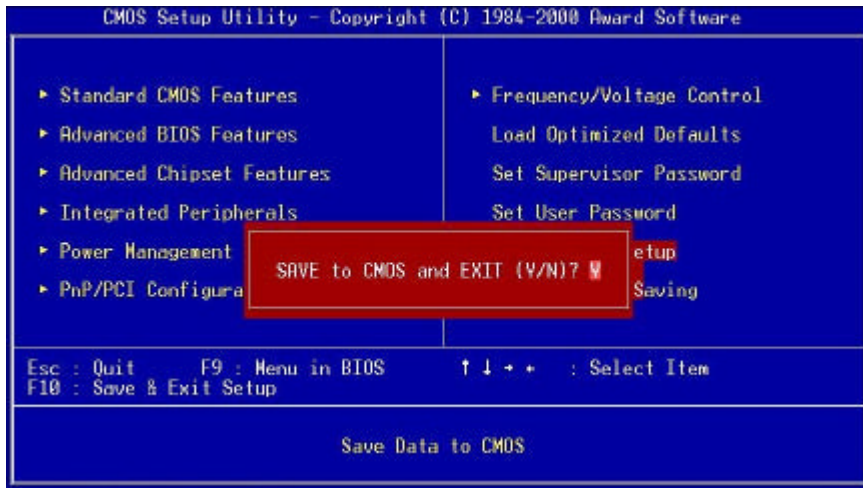
### 3-1-9 Load Optimized Defaults



"**Load Optimized Defaults**" loads optimized settings which are stored in the BIOS ROM. The auto-configured settings only affect '**BIOS Features Setup**' and "**Chipset Features Setup**" screens. There is no effect on the standard CMOS setup. To use this feature, highlight it on the main screen and press the <Enter> key. A line will appear on screen asking if you want to load the setup default values. Press the <Y> key and then press the <Enter> key. The setup defaults will then load. If not, enter <N>.

---

### 3-1-10 Save & Exit Setup

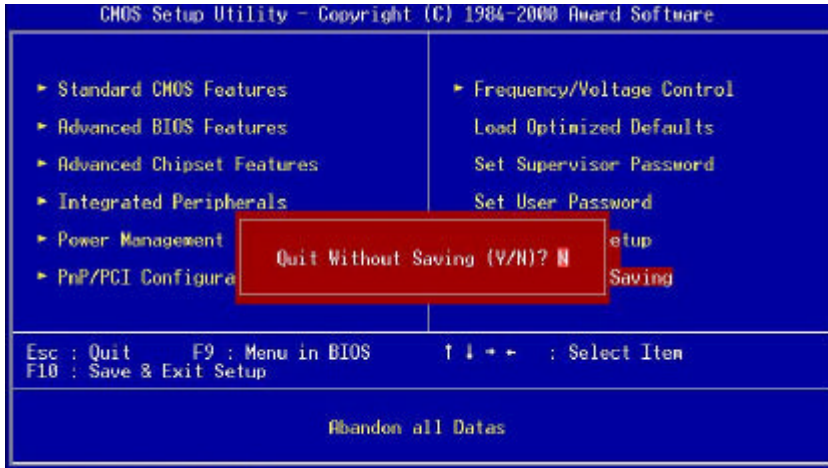


The "**Save & Exit Setup**" option will bring you back to boot up procedure with all the changes you have made which are recorded in the CMOS RAM.



---

### 3-1-11 Quit Without Saving



The "**Quit Without Saving**" option will bring you back to normal boot up procedure without saving any data into CMOS RAM. All of the old data in the CMOS will not be changed.

---

## Chapter 4      Appendix

### 4-1 Memory Map

Address range	Size	Description
00000-7FFFF	512K	Conventional memory
80000-9FBFF	127K	Extended conventional memory
9FC00-9FFFF	1K	Extended BIOS data area if PS/2 mouse is installed
A0000-C7FFF	160K	Available for hi DOS memory
C8000-DFFFF	96K	Available for hi DOS memory and adapter ROMs
E0000-EEFFF	60K	Available for UMB
EF000-EFFFF	4K	Video service routine for monochrome & CGA adapter
F0000-F7FFF	32K	BIOS CMOS setup utility
F8000-FCFFF	20K	BIOS runtime service routine (2)
FD000-FDFFF	4K	Plug and play escd data area
FE000-FFFFF	8K	BIOS runtime service routine (1)

---

## 4-2 I/O Map

000-01F	DMA controller (master)
020-021	Interrupt controller (master)
022-023	Chipset control registers. I/O ports
040-05F	Timer control registers
060-06F	Keyboard interface controller (8042)
070-07F	RTC ports & CMOS I/O ports
080-09F	DMA register
0A0-0BF	Interrupt controller (slave)
0C0-0DF	DMA controller (slave)
0F0-0FF	Math coprocessor
1F0-1FB	Hard disk controller
278-27F	Parallel port 2
2B0-2DF	Graphics adapter controller
2F8-2FF	Serial port 2
360-36F	Network ports
378-37F	Parallel port 1
3B0-3BF	Monochrome & parallel port adapter
3C0-3CF	EGA adapter
3D0-3DF	CGA adapter
3F0-3F7	Floppy disk controller
3F8-3FF	Serial port-1

---

## 4-3 Time & DMA Channels Map

### Time map:

- Timer channel 0 system timer interrupt
- Timer channel 1 DRAM refresh request
- Timer channel 2 speaker tone generator

### Dma channels:

- DMA channel 0 available
- DMA channel 1 onboard ECP (option)
- DMA channel 2 floppy disk (ITE chip)
- DMA channel 3 onboard ECP (default)
- DMA channel 4 cascade for DMA controller 1
- DMA channel 5 available
- DMA channel 6 available
- DMA channel 7 available

---

## 4-4 Interrupt Map

**A. NMI:** non-maskable interrupt

**B. IRQ(H/W):**

- 0 system timer interrupt from timer 0
- 1. 1 keyboard output buffer full
- 2. cascade for IRQ 8-15
- 3. serial port2
- 4. serial port1
- 5. parallel port 2
- 6. floppy disk (ITE chip)
- 7. parallel port 1
- 8. RTC clock
- 9. available
- 10. available
- 11. available
- 12. PS/2 mouse
- 13. math coprocessor
- 14. onboard hard disk (IDE1) channel
- 15. onboard hard disk (IDE2) channel

---

## 4-5 RTC & CMOS RAM Map

00	Seconds
01	Seconds Alarm
02	Minutes
03	Minutes Alarm
04	Hours
05	Hours Alarm
06	Day of Week
07	Day of Month
08	Month
09	Year
0A	Status Register A
0B	Status Register B
0C	Status Register C
0D	Status Register D
0E	Diagnostic Status Byte
0F	Shutdown Byte
10	Floppy Disk Type Drive Type Byte
12	Hard Disk Type Byte
13	Reserved
14	Equipment Type
15	Base Memory Low Byte
16	Base Memory High Byte
17	Extension Memory Low Byte
18	Extension Memory High Byte
19-2D	
2E-2F	
30	Reserved for Extension Memory Low Byte
31	Reserved for Extension Memory High Byte
33	Information Flag
34-3F	Reserved
40-7F	Reserved for Chipset Setting Data

---

## 4-6 Award BIOS Hard Disk Type

Type	Cylinder	Heads	Write Pre-comp	Landing Zone	Sectors	Size
1	306	4	128	305	17	10MB
2	615	4	300	615	17	21MB
3	615	6	300	615	17	32MB
4	940	8	512	940	17	65MB
5	940	6	512	940	17	49MB
6	615	4	65535	615	17	21MB
7	462	8	256	511	17	32MB
8	733	5	65535	733	17	31MB
9	900	15	65535	901	17	117MB
10	820	3	65535	820	17	21MB
11	855	5	65535	855	17	37MB
12	855	7	65535	855	17	52MB
13	306	8	128	319	17	21MB
14	733	7	65535	733	17	44MB
16	612	4	0	663	17	21MB
17	977	5	300	977	17	42MB
18	977	7	65535	977	17	59MB
19	1024	7	512	1023	17	62MB
20	733	5	300	732	17	31MB
21	733	7	300	732	17	44MB
22	733	5	300	733	17	31MB
23	306	4	0	336	17	10MB
24	977	5	0	925	17	42MB
25	1024	9	65535	925	17	80MB
26	1224	7	65535	754	17	74MB

---

Type	Cylinder	Heads	Write Pre-comp	Landing Zone	Sectors	Size
27	1224	11	65535	754	17	117MB
28	1224	15	65535	699	17	159MB
29	1024	8	65535	823	17	71MB
30	1024	11	65535	1023	17	98MB
31	918	11	65535	1023	17	87MB
32	925	9	65535	926	17	72MB
33	1024	10	65535	1023	17	89MB
34	1024	12	65535	1023	17	106MB
35	1024	13	65535	1023	17	115MB
36	1024	14	65535	1023	17	124MB
37	1024	2	65535	1023	17	17MB
38	1024	16	65535	1023	17	142MB
39	918	15	65535	1023	17	119MB
40	820	6	65535	820	17	42MB
41	1024	5	65535	1023	17	44MB
42	1024	8	65535	1023	17	68MB
43	809	6	65535	852	17	42MB
44	809	9	65535	852	17	64MB
45	776	8	65535	775	17	104MB
46	AUTO	0	0	0	0	
47	USER'S	TYPE				



---

## 4-7 ISA I/O Address Map

I/O Address (HEX)	I/O device
000 - 01F	DMA Controller 1, 8237A-5
020 - 03F	Interrupt Controller 1, 8259A
040 - 05F	System Timer, 8254-2
060 - 06F	8042 Keyboard Controller
070 - 07F	real-time Clock/CMOS and NMI Mask
080 - 09F	DMA Page Register, 74LS612
0A0 - 0BF	Interrupt Controller 2, 8259A
0C0 - 0DF	DMA Controller 2, 8237A-5
0F0 - 0FF	i486 Math Coprocessor
1F0 - 1F8	Fixed Disk Drive Adapter
200 - 207	Game I/O
20C - 20D	Reserved
21F	Reserved
278 - 27F	Parallel Printer Port 2
2B0 - 2DF	Alternate Enhanced Graphic Adapter
2E1	GPIB Adapter 0
2E2 - 2E3	Data Acquisition Adapter 0
2F8 - 2FF	Serial Port 2 (RS-232-C)
300 - 31F	Prototype Card
360 - 363	PC Network (Low Address)
364 - 367	Reserved
368 - 36B	PC Network (High Address)
36C - 36F	Reserved
378 - 37F	Parallel Printer Port 1

---

<b>I/O Address (HEX)</b>	<b>I/O device</b>
380 - 38F	SDLC, Bisynchronous 2
390 - 393	Cluster
3A0 - 3AF	Bisynchronous 1
3B0 - 3BF	Monochrome Display and Printer Adapter
3C0 - 3CF	Enhanced Graphics Adapter
3D0 - 3DF	Color/Graphics Monitor Adapter
3F0 - 3F7	Diskette Drive Controller
3F8 - 3FF	Serial Port 1 (RS-232-C)
6E2 - 6E3	Data Acquisition Adapter 1
790 - 793	Cluster Adapter 1
AE2 - AE3	Data Acquisition Adapter 2
B90 - B93	Cluster Adapter 2
EE2 - EE3	Data Acquisition Adapter 3
1390 - 1393	Cluster Adapter 3
22E1	GPIB Adapter 1
2390 - 2393	Cluster Adapter 4
42E1	GPIB Adapter 2
62E1	GPIB Adapter 3
82E1	GPIB Adapter 4
A2E1	GPIB Adapter 5
C2E1	GPIB Adapter 6
E2E1	GPIB Adapter 7

---

## Chapter 5      Q & A

### 5-1    Error Messages During Power on Self Test

During **power on self test (post)**, BIOS will automatically detect the system devices. Below are the questions that users most often meet. The user may press “**Esc**” key to skip the full memory test.

#### **1.    *Beep sound***

On power on, the system make beep sound to offer different messages. If the system is configured correctly, it prompts a short beep to show device configuration is done correctly. When VGA card and DIMM modules are not plugged well, the system makes longer and constant beep sounds.

#### **2.    *BIOS ROM checksum error***

It indicates the checksum of the BIOS code is not right and system will always halt on power on screen. Contact the dealer to exchange a new BIOS.

#### **3.    *CMOS battery fails***

It indicates the CMOS battery does not work. Contact the dealer to exchange a new battery.

#### **4.    *CMOS checksum error***

It indicates the CMOS checksum is incorrect. Load the default values in BIOS to solve this problem. This error may result from a weak BIOS, so replace a new BIOS if necessary.

---

**5. *Hard disk initialize***

**Please wait a moment...**

Some hard drives require more time to initialize.

**6. *Hard disk install failure***

The system can not find or initialize the hard drive controller or the drive. Check if the controller is set correctly. If no hard disk is installed, “**Hard drive selection**” must be set to “**none.**”

**7. *Keyboard error or no keyboard present***

This means the system can not initialize the keyboard. Check if the keyboard is plugged well and be sure no keys are pressed during POST.

**8. *Keyboard is lock out - Unlock the key***

When this message comes out, check if there is anything mis-placed on the keyboard. Be sure nothing touches the keys.

**9. *Memory test fails***

There will be more information to specify the type and location of the memory error.

**10 *Primary master hard disk fail***

The BIOS find an error in the primary master hard disk drive.

**11 *Primary slave hard disk fail***

The BIOS finds an error in the primary slave hard disk drive.

**12 *Secondary master hard disk fail***

The BIOS finds an error in the secondary slave master hard disk drive.

**13 *Secondary slave hard disk fail***

The BIOS finds an error in the secondary slave IDE hard disk drive.