

650EFC

USER'S MANUAL

M/B For Socket 478 Pentium 4 Processor

NO. G03-650EFC1A

Release date: April 2003

Trademark:

* Specifications and Information contained in this documentation are furnished for information use only, and are subject to change at any time without notice, and should not be construed as a commitment by manufacturer.

TABLE OF CONTENT

USER'S NOTICE	1
MANUAL REVISION INFORMATION	1
COOLING SOLUTIONS	1
CHAPTER 1 INTRODUCTION OF 650EFC MOTHERBOARD	
1-1 FEATURE OF MOTHERBOARD	2
1-2 SPECIFICATION	3
1-3 PERFORMANCE LIST.....	4
1-4 LAYOUT DIAGRAM & JUMPER SETTING.....	5
CHAPTER 2 HARDWARE INSTALLATION	
2-1 HARDWARE INSTALLATION STEPS	7
2-2 CHECKING MOTHERBOARD'S JUMPER SETTING	7
2-3 INSTALL CPU	9
2-3-1 GLOSSARY.....	9
2-3-2 ABOUT INTEL PENTIUM 4 478-PIN CPU.....	9
2-4 INSTALL MEMORY.....	10
2-5 EXPANSION CARD	11
2-5-1 PROCEDURE FOR EXPANSION CARD INSTALLATION	11
2-5-2 ASSIGNING IRQ FOR EXPANSION CARD	11
2-5-3 INTERRUPT REQUEST TABLE FOR THIS MOTHERBOARD	12
2-5-4 AGP SLOT	12
2-6 CONNECTORS, HEADERS.....	12
2-6-1 CONNECTORS	12
2-6-2 HEADERS	15
2-7 STARTING UP YOUR COMPUTER	18
CHAPTER 3 INTRODUCING BIOS	
3-1 ENTERING SETUP	19
3-2 GETTING HELP.....	20
3-3 THE MAIN MENU	20
3-4 STANDARD CMOS FEATURES.....	21
3-5 ADVANCED BIOS FEATURES.....	23
3-6 ADVANCED CHIPSET FEATURES.....	25
3-6-1 DRAM TIMING SETTINGS	25
3-6-2 AGP FUNCTION SETTINGS.....	26
3-7 INTEGRATED PERIPHERALS	26
3-7-1 ONCHIP IDE FUNCTION.....	27
3-7-2 ONCHIP DEVICE FUNCTION	28
3-7-3 ONCHIP SUPER IO FUNCTION	28
3-8 POWER MANAGEMENT SETUP	29
3-8-1 PM WAKE UP EVENTS	30
3-9 PNP/PCI CONFIGURATION SETUP.....	31
3-9-1 IRQ RESOURCES.....	32
3-10 PC HEALTH STATUS.....	33
3-11 MISCELLANEOUS CONTROL.....	33
3-12 LOAD STANDARD/OPTIMIZED DEFAULTS.....	34
3-13 SET SUPERVISOR/USER PASSWORD	35
CHAPTER 4 DRIVER & FREE PROGRAM INSTALLATION	
MAGIC INSTALL SUPPORTS WINDOWS 95/98/98SE/NT4.0/2000/XP	36
4-1 AGPVXD INSTALL SIS AGPVXD DRIVER	37
4-2 VGA INSTALL SIS 650 VGA DRIVER	37
4-3 SOUND INSTALL ALC AUDIO CODEC DRIVER.....	39
4-4 LAN INSTALL LAN CONTROLLER DRIVER	40
4-5 PC-HEALTH INSTALLS SMART GUARDIAN SOFTWARE FOR HARDWARE MONITORING DEVICE	40
4-6 MAGIC BIOS INSTALL BIOS LIVE UPDATE UTILITY	41
4-7 PC-CILLIN INSTALL PC-CILLIN2002 ANTI-VIRUS PROGRAM.....	43
4-8 USB2.0 INSTALL SIS USB2.0 DEVICE DRIVER	44
4-9 HOW TO DISABLE ON-BOARD SOUND	45
4-10 HOW TO UPDATE BIOS	45

USER'S NOTICE

COPYRIGHT OF THIS MANUAL BELONGS TO THE MANUFACTURER. NO PART OF THIS MANUAL, INCLUDING THE PRODUCTS AND SOFTWARE DESCRIBED IN IT MAY BE REPRODUCED, TRANSMITTED OR TRANSLATED INTO ANY LANGUAGE IN ANY FORM OR BY ANY MEANS WITHOUT WRITTEN PERMISSION OF THE MANUFACTURER.

THIS MANUAL CONTAINS ALL INFORMATION REQUIRED TO USE 650EFC MOTHER-BOARD AND WE DO ASSURE THIS MANUAL MEETS USER'S REQUIREMENT BUT WILL CHANGE, CORRECT ANY TIME WITHOUT NOTICE. MANUFACTURER PROVIDES THIS MANUAL "AS IS" WITHOUT WARRANTY OF ANY KIND, AND WILL NOT BE LIABLE FOR ANY INDIRECT, SPECIAL, INCIDENTAL OR CONSEQUENTIAL DAMAGES (INCLUDING DAMAGES FOR LOSS OF PROFIT, LOSS OF BUSINESS, LOSS OF USE OF DATA, INTERRUPTION OF BUSINESS AND THE LIKE).

PRODUCTS AND CORPORATE NAMES APPEARING IN THIS MANUAL MAY OR MAY NOT BE REGISTERED TRADEMARKS OR COPYRIGHTS OF THEIR RESPECTIVE COMPANIES, AND THEY ARE USED ONLY FOR IDENTIFICATION OR EXPLANATION AND TO THE OWNER'S BENEFIT, WITHOUT INTENT TO INFRINGE.

Manual Revision Information

Reversion	Revision History	Date
1.0	First Release	April 2003

Item Checklist

- 650EFC motherboard
- Cable for IDE/Floppy
- Cable for COM1/COM2 Connector
- CD for motherboard utilities
- 650EFC User's Manual

Intel Pentium 4 Processor Family Cooling Solutions

As processor technology pushes to faster speeds and higher performance, thermal management becomes increasingly crucial when building computer systems. Maintaining the proper thermal environment is key to reliable, long-term system operation. The overall goal in providing the proper thermal environment is keeping the processor below its specified maximum case temperature. Heatsinks induce improved processor heat dissipation through increased surface area and concentrated airflow from attached fans. In addition, interface materials allow effective transfers of heat from the processor to the heatsink. For optimum heat transfer, Intel recommends the use of thermal grease and mounting clips to attach the heatsink to the processor.

When selecting a thermal solution for your system, please refer to the website below for collection of heatsinks evaluated and recommended by Intel for use with Intel processors. Note, those heatsinks are recommended for maintaining the specified Maximum T case requirement. In addition, this collection is not intended to be a comprehensive listing of all heatsinks that support Intel processors.

For vendor list of heatsink and fan, please visit :

<http://developer.intel.com/design/Pentium4/components/index>

Chapter 1

Introduction of 650EFC Motherboard

1-1 Feature of motherboard

The 650EFC motherboard is design for use Intel Pentium 4 Processor in 478 Pin Package Processor with the SiS 651 Chipset delivers a high performance and professional desktop platform solution. Which utilize the Socket 478 design (Support Hyper Threading CPU) and the memory size expandable to 2.0GB.

The motherboard use the newest SiS 651(B0) Chipset Supports 533MHz System Bus in data transfer rate and 100MHz/133MHz/166MHz clock frequency, support DDR200/DDR266/DDR333 DDR SDRAM Module. And use SiS 962L/962 MuTIOL Media IO supports 533MB/s transfer data from/to sub-system to/from the Muti-threaded I/O Link Encoder/Decoder in SiS 962L.

The motherboard offer ULTRA ATA **133** to provide speedier HDD throughout that boosts overall system performance.

The 650EFC motherboard including LAN controller support 10/100 Mb/sec BASE T transfer rate Ethernet.

The motherboard also has an integrated AC97' 6-channel Codec on board, supports front, rear, base center side speakers, C3DX positional audio in 6 channels speaker mode. Professional digital audio interface to supports 24-bit SPDIF IN and OUT (44.1K and 48K format).The on board Sound Controller provide 3D positional audio, support DirectSound™ 3D and Aural A3D™ interface. This Sound chip is fully compatible with Sound Blaster Pro® that gives you the best sound quality and compatibility. You can connect any optical Input/Output device for super high quality sound transaction, such as Optical Speaker, MD, CD-ROM.

The 650EFC integrated High Performance & High Quality 3D Accelerator supports Ultra-AGPII with 2GB/s bandwidth, built-in MPEG-2/1 Video Decoder and Video Accelerator supports VCD, DVD HDTV decoding and playback, supports graphic and video overlay function. Built-in programmable 24-bit true-color RAMDAC up to 333MHz pixel clock. Programmable frame buffer size from 8MB and up to 64MB. For those wanting even greater graphic performance, an AGP 4X slot is included on the board, support AGP 2X/4X capability and Fast write Transaction.

With USB control as well as capability of expanding to 6 USB2.0 function ports delivering 480Mb/s bandwidth and rich connectivity, the 650EFC meet future USB demand also this motherboard has built-in hardware monitor function to monitor and protect your computer.

A useful software tool “Magic BIOS” examines the BIOS version automatically with the correct version available on the web, links the site for users to download the latest version of BIOS and updates the BIOS. Use “Magic BIOS”, users can download and update BIOS automatically and completed under the OS easily.

650EFC provides high performance & meets future specification demand. It is really wise choice for your computer.

1-2 Specification

Spec	Description
Design	* Mini ATX form factor 6 layers PCB size: 17.6x24.0cm
Chipset	* SiS 651 North Bridge Chipset * SiS 962L/962 MuTIOL Media I/O Chipset
CPU Socket (mPGA478B Socket)	* Support Intel Pentium 4 478 Pin package utilizes Flip-Chip Pin Grid Array (FC-PGA2) package processor * Support 1.5G~3.06G 400/533MHz 478 Pin Pentium 4 processor, Support Hyper Threading CPU * Reserves support for future Intel Pentium 4 processors
Memory Socket	* 184-pin DDR SDRAM module socket x2 * Support 2 pcs DDR266/DDR333 DDR SDRAM Modules * Expandable to 2.0GB
Expansion Slot & Headers	* AGP slot x1 support AGP 2.0 & 4X mode * 32-bit PCI slot x1
Integrate IDE	* Two PCI IDE controllers support PCI Bus Mastering, ATA PIO/DMA and the ULTRA DMA 66/100/133 functions that deliver the data transfer rate up to 133 MB/s
LAN	* SiS On-chip LAN controller * Support full duplex 10/100 Base-T Ethernet
6 channel Audio	* Realtek ALC 650 6-channel AC97' Codec integrated * <i>SPDIF-In/ SPDIF-Out Optical support</i> * Audio driver and utility included
BIOS	* Award 2Mb Flash ROM
Multi I/O	* PS/2 keyboard and PS/2 mouse connectors * Floppy disk drive connector x1 * Parallel port x1 * Serial port x2 * USB 2.0 connector x2 * USB 2.0 headers x2 (connecting cable option) * Audio connector (Front, Rear, Center-Base, MIC)

1-3 Performance List

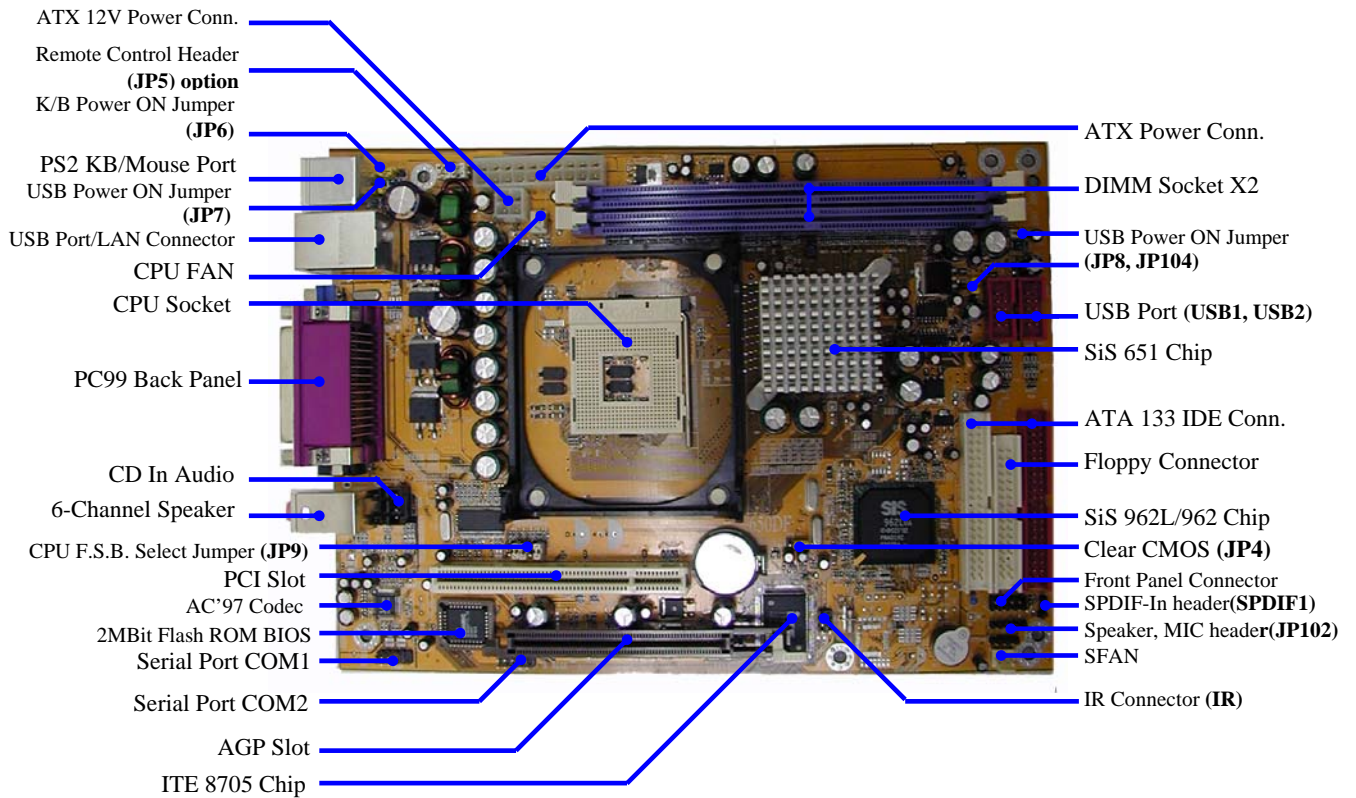
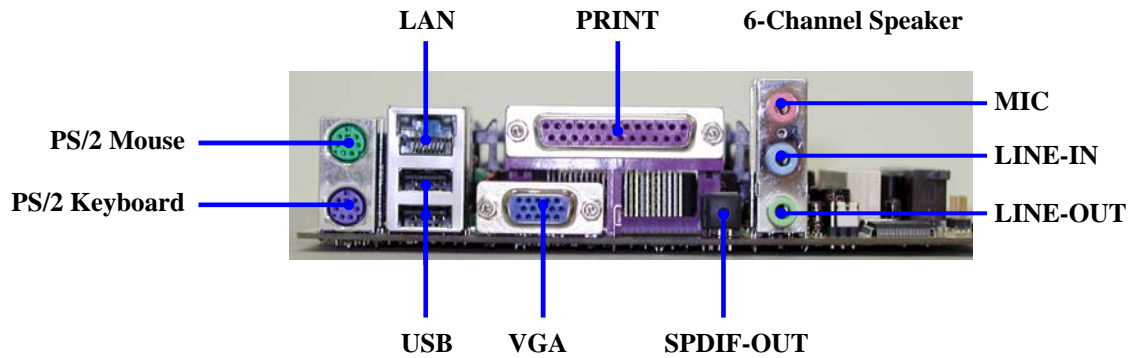
The following performance data list is the testing result of some popular benchmark testing programs. These data are just referred by users, and there is no responsibility for different testing data values gotten by users (the different Hardware & Software configuration will result in different benchmark testing results.)

Performance Test Report

CPU: Intel Pentium 4 1.9GHz mPGAB package
DRAM: 256MB DDR266 x1 (MICRON 46V16M8-6)
VGA Expansion Card: NVIDIA Geforce2 MX-200 32MB (1024x768xHi-color)
Hard Disk Driver: IBM DTLA-305040 (ATA-100)
BIOS: Award Optimal default
OS: Win 98SE

	DDR266 On Board VGA Share 32MB	DDR266 Geforce MX200 32MB
3D Mark 2000	3297	2918
3D Mark 2001	1407	1201
3D Winbench 2000	51.8	55.3
Final Reality	10.59	9.63
Content Creation Winstone 2000	41.1	42.7
Content Creation Winstone 2001	51.8	51.9
Business Winstone2001	41.4	43.7
Winbench 99:		
CPU Mark 99	107	110
FPU Winmark 99	6590	6580
Business Disk Winmark99	5090	7020
Hi-end Disk Winmark99	17000	21600
Business Graphic Winmark	383	402
Hi-end Graphic Winmark	1160	1250
SYS Mark 2000/2001 : SISMark 2000/2001 Rating (Internet Content Creation / Office Productivity)		
SISMark 2000	201 (220/188)	208 (224/196)
SISMark 2001	147 (167/129)	147 (167/129)
SISOFT Sandra 2001 :		
Dhrystone ALU	MIPS	3625
Whetstone FPU	MFLOPS	1142/2363
Int ALU/RAM	MB/S	929
Float FPU/RAM	MB/S	944
Integer SSE2	IT/S	7543
Floating-Point SSE2	IT/S	9322
QUAKE3 DEMO1	FPS	71.0
DEMO2	FPS	68.0
WCPUID System/CPU Clock	100.67/1912.80	100.67/1912.81

1-4 Layout Diagram & Jumper Setting



Jumpers

Jumper	Name	Description	Page
JP4	CMOS RAM Clear	3-pin Block	P.7
JP6	Keyboard Power On Enable/Disabled	3-pin Block	P.7
JP7, JP8, JP104	USB Power On Enable/Disabled	3-pin Block	P.8
JP9	Front Side Bus Frequency Setting	10-pin Block	P.8

Connectors

Connector	Name	Description	Page
ATXPWR	ATX Power Connector	20-pin Block	P.12
ATX12V	ATX 12V Power Connector	4-pin Block	P.13
KB/MS1	PS/2 Mouse & PS/2 Keyboard Connector	6-pin Female	P.13
USB (J1)	USB Port Connector	4-pin Connector	P.13
LAN	LAN Port Connector	RJ-45 Connector	P.13
LPT	Parallel Port Connector	25-pin Female	P.13
AUDIO(CN23)	Speaker(Front), Line-In(Rear), Center-Base	3x phone Jack	P.13
VGA	VGA Connector	15-pin Female Connector	P.13
OPT1	SPDIF-Out Optical Connector	Standard Optical Connector	P.13
FDD	Floppy Driver Connector	34-pin Block	P.14
IDE1/IDE2	Primary/Secondary IDE Connector	40-pin Block	P.14

Headers

Header	Name	Description	Page
COM1/COM2	Serial Port COM1/2 header	9-pin Block	P.15
AUDIO1 (JP102)	SPEAKER, MIC header	5-pin Block	P.15
USB1/USB2	USB Port Headers	9-pin Block	P.15
HD-LED	IDE activity LED	2-pin Block	P.15
RESET	Reset switch lead	2-pin Block	P.15
SPEAK	PC Speaker connector	4-pin Block	P.15
PWR-LED	Power LED	2-pin Block	P.16
PWR-BTN	Power switch	2-pin Block	P.16
SFAN, CPUFAN	FAN Headers	3-pin Block	P.16
IR	IR infrared module Headers	5-pin Block	P.16
CDIN	CD Audio-In Headers	4-pin Block	P.17
SPDIF-In (SPDIF1)	SPDIF-In Optical Header	3-pin Block	P.17
JP5 (option)	Remote Control header	10-pin Block	P.17

Expansion Sockets

Socket/Slot	Name	Description	Page
ZIF Socket 478 Pin	CPU Socket	478-pin mPGA CPU Socket	P.9
DIMM1, DIMM2	SDRAM Module Socket	184-pin DDR SDRAM Module Expansion Socket	P.10
PCI1	PCI Slot	32-bit PCI Local Bus Expansion slots	P.11
AGP	AGP 4X Mode Slot	AGP Expansion Slot	P.12

Chapter 2

Hardware installation

2-1 Hardware installation Steps

Before using your computer, you had better complete the following steps:

1. Check motherboard jumper setting
2. Install CPU and Fan
3. Install System Memory (DIMM)
4. Install Expansion cards
5. Connect IDE and Floppy cables, Front Panel /Back Panel cable
6. Connect ATX Power cable
7. Power-On and Load Standard Default
8. Reboot
9. Install Operating System
10. Install Driver and Utility

2-2 Checking Motherboard's Jumper Setting

(1) CMOS RAM Clear (3-pin) : JP4

A battery must be used to retain the motherboard configuration in CMOS RAM short 2-3 pins of JP4 to store the CMOS data.

To clear the CMOS, follow the procedure below:

1. Turn off the system and unplug the AC power
2. Remove ATX power cable from ATX power connector
3. Locate JP4 and short pins 1-2 for a few seconds
4. Return JP4 to its normal setting by shorting pins 2-3
5. Connect ATX power cable back to ATX power connector

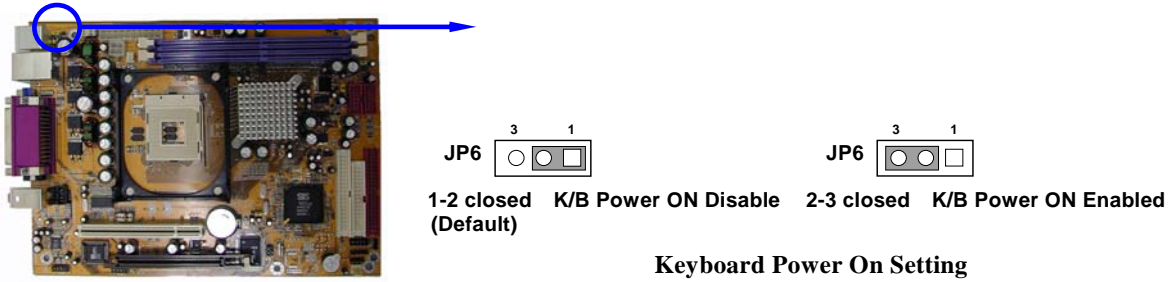
Note: When should clear CMOS

1. *Troubleshooting*
2. *Forget password*
3. *After over clocking system boot fail*

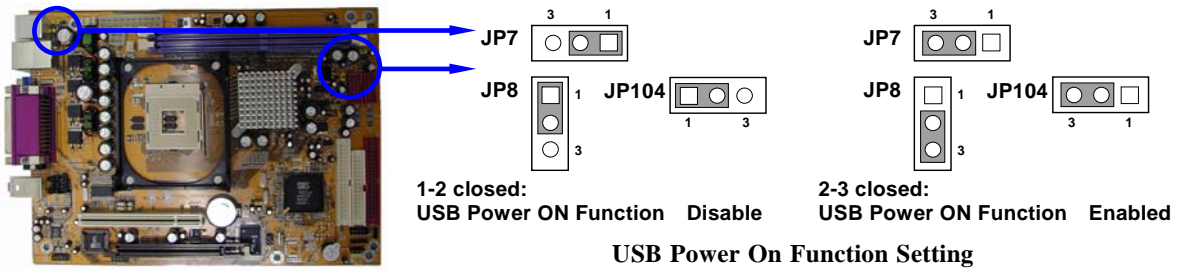


(2) Keyboard Power On function Enabled/Disabled: JP6

When setting Enabled you can using keyboard by key in password to power on system.



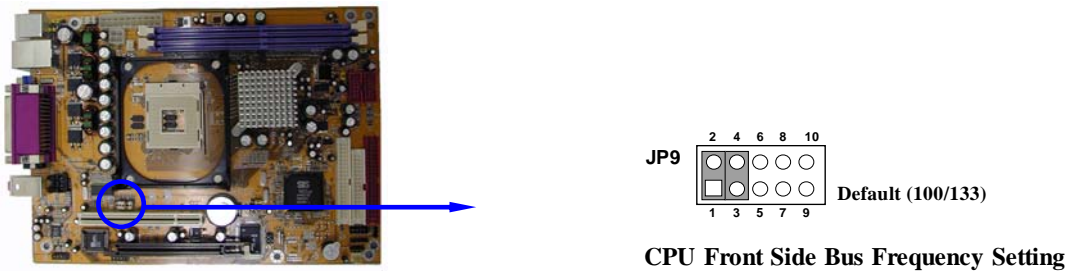
(3) USB Power On function Enabled/Disabled: JP7, JP8, JP104



(4) CPU Front Side Bus/SDRAM Frequency Setting jumper: JP9

JP9					CPU (MHz)	SDRAM (MHz)	(Default)
1-2	3-4	5-6	7-8	9-10			
On	Off	Off	Off	On	100 (400)	100 (DDR200)	
On	On	Off	Off	Off	100 (400)	133 (DDR266)	
Off	On	On	Off	On	133 (533)	133 (DDR266)	
On	On	On	Off	On	133 (533)	166 (DDR333)	

You can change the CPU Front Side Bus and SDRAM frequency by BIOS setup, in “Miscellaneous Control” setting “Clock Control Enabled” you can settling Host Clock (CPU Front Side Bus) from 100MHz to 200MHz, and SDRAM Clock setting 100MHz, 133MHz, 166MHz, please refer Chapter 3 “Miscellaneous Control” in [Page 33](#).



2-3 Install CPU

2-3-1 Glossary

Chipset (or core logic) - two or more integrated circuits which control the interfaces between the system processor, RAM, I/O devices, and adapter cards.

Processor slot/socket - the slot or socket used to mount the system processor on the motherboard.

Slot (AGP, PCI, ISA, RAM) - the slots used to mount adapter cards and system RAM.

AGP - Accelerated Graphics Port - a high speed interface for video cards; runs at 1X (66MHz), 2X (133MHz), or 4X (266MHz).

PCI - Peripheral Component Interconnect - a high speed interface for video cards, sound cards, network interface cards, and modems; runs at 33MHz.

ISA - Industry Standard Architecture - a relatively low speed interface primarily used for sound cards and modems; runs at approx. 8MHz.

Serial Port - a low speed interface typically used for mouse and external modems.

Parallel Port - a low speed interface typically used for printers.

PS/2 - a low speed interface used for mouse and keyboards.

USB - Universal Serial Bus - a medium speed interface typically used for mouse, keyboards, scanners, and some digital cameras.

Sound (interface) - the interface between the sound card or integrated sound connectors and speakers, MIC, game controllers, and MIDI sound devices.

LAN (interface) - **Local Area Network** - the interface to your local area network.

BIOS (Basic Input/Output System) - the program logic used to boot up a computer and establish the relationship between the various components.

Driver - software, which defines the characteristics of a device for use by another device or other software.

Processor - the "central processing unit" (CPU); the principal integrated circuit used for doing the "computing" in "personal computer"

Front Side Bus Frequency - the working frequency of the motherboard, which is generated by the clock generator for CPU, DRAM and PCI BUS.

CPU L2 Cache - the flash memory inside the CPU, normal it depend on CPU type.

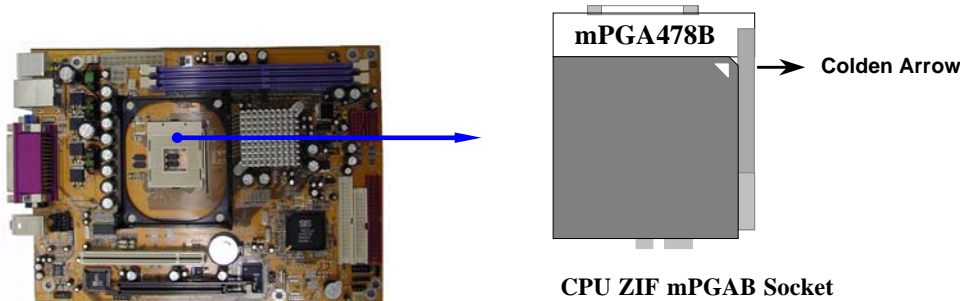
2-3-2 About Intel Pentium 4 478-pin CPU

This motherboard provides a 478-pin surface mount, Zero Insertion Force (ZIF) socket, referred to as the mPGA478B socket supports Intel Pentium 4 processor in the 478 Pin package utilizes Flip-Chip Pin Grid Array (FC-PGA2) package technology.

The CPU that comes with the motherboard should have a cooling FAN attached to prevent overheating. If this is not the case, then purchase a correct cooling FAN before you turn on your system.

WARNING! Be sure that there is sufficient air circulation across the processor's heatsink and CPU cooling FAN is working correctly, otherwise it may cause the processor and motherboard overheat and damage, you may install an auxiliary cooling FAN, if necessary.

To install a CPU, first turn off your system and remove its cover. Locate the ZIF socket and open it by first pulling the level sideways away from the socket then upward to a 90-degree angle. Insert the CPU with the correct orientation as shown below. The notched corner should point toward the end of the level. Because the CPU has a corner pin for two of the four corners, the CPU will only fit in the orientation as shown.



When you put the CPU into the ZIF socket. No force require to insert of the CPU, then press the level to Locate position slightly without any extra force.

2-4 Install Memory

This motherboard provides **two** 184-pin DUAL INLINE MEMORY MODULES (DIMM) sites for DDR memory expansion available from minimum memory size of 64MB to maximum memory size of 2.0GB DDR SDRAM.

Valid Memory Configurations

Bank	184-Pin DIMM	PCS	Total Memory
Bank 0, 1 (DDR1)	DDR200/DDR266 DDR SDRAM Module	X1	64MB~1.0GB
Bank 2, 3 (DDR2)	DDR200/DDR266 DDR SDRAM Module	X1	64MB~1.0GB
Total	System Memory (Max. 2.0GB)	2	64MB~2.0GB

Generally, installing DDR SDRAM modules to your motherboard is very easy, you can refer to figure 2-4 to see what a 184-Pin DDR SDRAM module looks like.

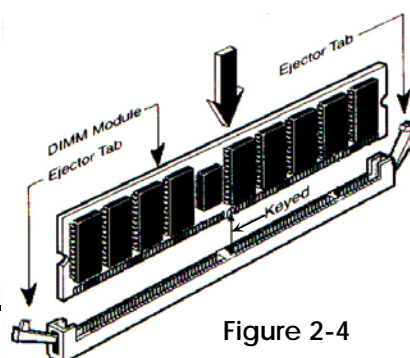
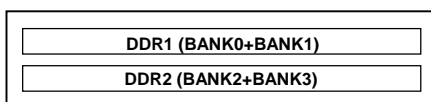
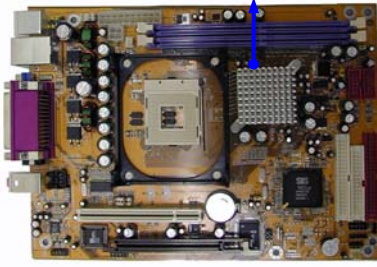


Figure 2-4



NOTE! When you install DIMM module fully into the DIMM socket the eject tab should be locked into the DIMM module very firmly and fit into its indentation on both sides.

WARNING! For the DDR SDRAM CLOCK is set at 133MHz, use only DDR266-compliant DDR Modules. When this motherboard operate at 133MHz, most system will not even boot if non-compliant modules are used because of the strict timing issues, if your DDR Modules are not DDR266-compliant, set the SDRAM clock to 100MHz to ensure system stability.

2-5 Expansion Cards

WARNING! Turn off your power when adding or removing expansion cards or other system components. Failure to do so may cause severe damage to both your motherboard and expansion cards.

2-5-1 Procedure For Expansion Card Installation

1. Read the documentation for your expansion card and make any necessary hardware or software setting for your expansion card such as jumpers.
2. Remove your computer's cover and the bracket plate on the slot you intend to use.
3. Align the card's connectors and press firmly.
4. Secure the card on the slot with the screen you remove above.
5. Replace the computer system's cover.
6. Set up the BIOS if necessary.
7. Install the necessary software driver for your expansion card.

2-5-2 Assigning IRQs For Expansion Card

Some expansion cards need an IRQ to operate. Generally, an IRQ must exclusively assign to one use. In a standard design, there are 16 IRQs available but most of them are already in use.

Standard Interrupt Assignments

IRQ	Priority	Standard function
0	N/A	System Timer
1	N/A	Keyboard Controller
2	N/A	Programmable Interrupt
3 *	8	Communications Port (COM2)
4 *	9	Communications Port (COM1)
5 *	6	Sound Card (sometimes LPT2)
6 *	11	Floppy Disk Controller
7 *	7	Printer Port (LPT1)
8	N/A	System CMOS/Real Time Clock

9 *	10	ACPI Mode when enabled
10 *	3	IRQ Holder for PCI Steering
11 *	2	IRQ Holder for PCI Steering
12 *	4	PS/2 Compatible Mouse Port
13	N/A	Numeric Data Processor
14 *	5	Primary IDE Channel
15 *	1	Secondary IDE Channel

* These IRQs are usually available for ISA or PCI devices.

2-5-3 Interrupt Request Table For This Motherboard

Interrupt request are shared as shown the table below:

	INT A	INT B	INT C	INT D	INT E	INT F	INT G	INT H
Slot 1	√							
Onboard USB 1					√			
Onboard USB 2								√
Sound			√					
LAN				√				

IMPORTANT! If using PCI cards on shared slots, make sure that the drivers support “Shared IRQ” or that the cards don’t need IRQ assignments. Conflicts will arise between the two PCI groups that will make the system unstable or cards inoperable.

2-5-4 AGP Slot

This motherboard provides an AGP Slot, support the 2X/4X AGP VGA card.



2-6 Connectors, Headers

2-6-1 Connectors

(1) Power Connector (20-pin block) : ATXPWR

ATX Power Supply connector. This is a new defined 20-pins connector that usually comes with ATX case. The ATX Power Supply allows to use soft power on momentary switch that connect from the front panel switch to 2-pins Power On jumper pole on the motherboard. When the power switch on the back of the ATX power supply turned on, the full power will not come into the system board until the front panel switch is momentarily pressed. Press this switch again will turn off the power to the system board.

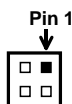


Pin 1 →

PIN	ROW2	ROW1
1	3.3V	3.3V
2	-12V	3.3V
3	GND	GND
4	Soft Power On	5V
5	GND	GND
6	GND	5V
7	GND	GND
8	-5V	Power OK
9	+5V	+5V (for Soft Logic)
10	+5V	+12V

(2) ATX 12V Power Connector (4-pin block) : ATX12V

This is a new defined 4-pins connector that usually comes with ATX Power Supply. The ATX Power Supply which fully support Pentium 4 processor must including this connector for support extra 12V voltage to maintain system power consumption. Without this connector might cause system unstable because the power supply can not provide sufficient current for system.



(3) PS/2 Mouse & PS/2 Keyboard Connector: KB/MS1

The connectors for PS/2 keyboard and PS/2 Mouse.

(4) USB Port connector: USB (J1)

The connectors are 4-pin connector that connect USB devices to the system board.

(5) LAN Port connector (RJ45): LAN

This connector is standard RJ45 connector for Network connector.

(6) Parallel Port Connector (25-pin female): LPT

Parallel Port connector is a 25-pin D-Subminiature Receptacle connector. The On-board Parallel Port can be disabled through the BIOS SETUP. Please refer to Chapter 3 “INTEGRATED PERIPHERALS SETUP” section for more detail information.

(7) Audio Connector: Audio

This Connector are 3 phone Jack for LINE-OUT (Front Speaker), LINE-IN (Rear Speaker) , Center/Base Speaker

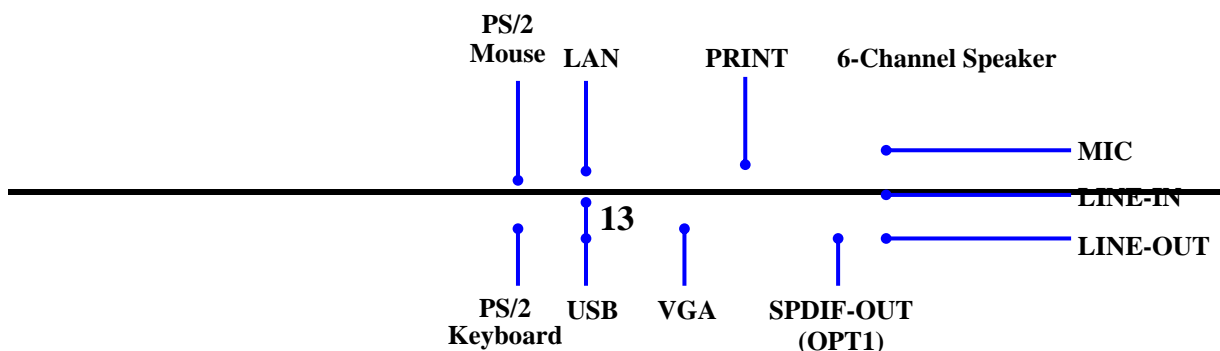
Line-out(Front Speaker) : Audio output to speaker

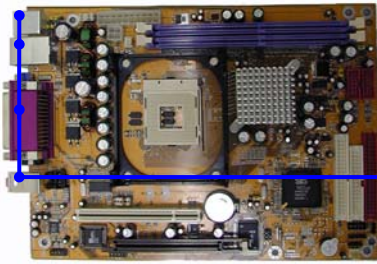
Line-in (Rear Speaker) : Audio input to sound chip/Rear speaker

Center/Base : Audio output for Center/Base speaker

(8) VGA Connector : VGA

VGA connector is the 15-pin D-Subminiature female connector for connection Display Monitor





(9) Floppy drive Connector (34-pin block): FDD

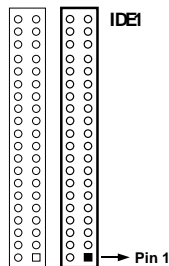
This connector supports the provided floppy drive ribbon cable. After connecting the single plug end to motherboard, connect the two plugs at other end to the floppy drives.



Floppy Drive Connector

(10) Primary IDE Connector (40-pin block): IDE1

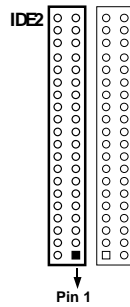
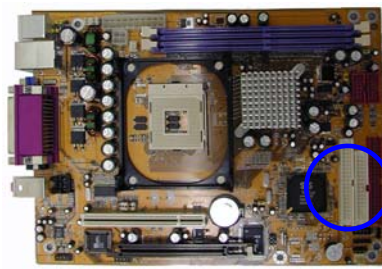
This connector supports the provided IDE hard disk ribbon cable. After connecting the single plug end to motherboard, connect the two plugs at other end to your hard disk(s). If you install two hard disks, you must configure the second drive to Slave mode by setting its jumpers accordingly. Please refer to the documentation of your hard disk for the jumper settings.



Primary IDE Connector

(11) Secondary IDE Connector (40-pin block): IDE2

This connector connects to the next set of Master and Slave hard disks. Follow the same procedure described for the primary IDE connector. You may also configure two hard disks to be both Masters using one ribbon cable on the primary IDE connector and another ribbon cable on the secondary IDE connector.



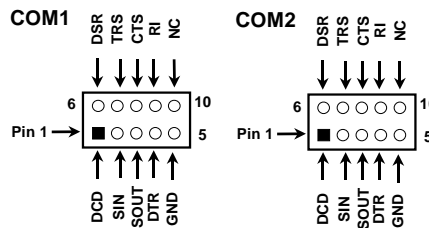
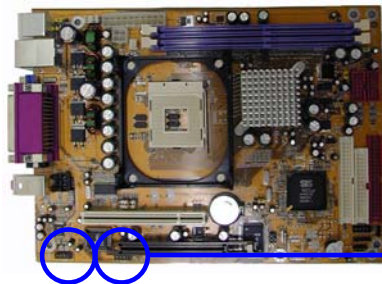
Secondary IDE Connector

- Two hard disks can be connected to each connector. The first HDD is referred to as the “Master” and the second HDD is referred to as the “Slave”.
- For performance issues, we strongly suggest you don’t install a CD-ROM or DVD-ROM drive on the same IDE channel as a hard disk. Otherwise, the system performance on this channel may drop.

2-6-2 Headers

(1) Serial Port Header for COM Port (9-pin): COM1, COM2

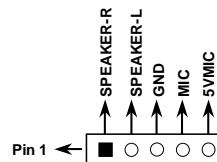
Note: Orient the read marking on the COM1/COM2 ribbon cable to pin 1



Serial Port COM1/COM2 Headers

(2) Speaker/MIC Header for Front Panel (5-pin): JP102

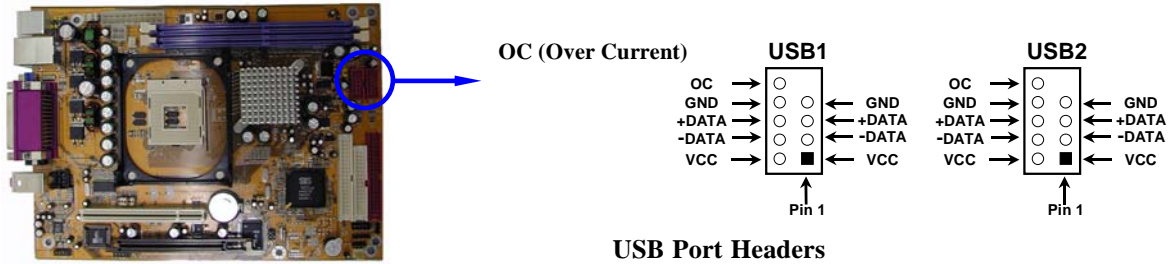
This header connect to Front Panel Speaker, MIC connector with cable.



Speaker, MIC Headers

(3) USB Port Headers (9-pin) : USB1, USB2

These headers are used for connecting the additional USB port plug. By attaching an option USB cable, your can be provided with two additional USB plugs affixed to the back panel.



(4) IDE Activity LED: HD-LED

This connector connects to the hard disk activity indicator light on the case.

(5) Reset switch lead: RESET

This 2-pin connector connects to the case-mounted reset switch for rebooting your computer without having to turn off your power switch. This is a preferred method of rebooting in order to prolong the life of the system's power supply. See the figure below.

(6) Speaker connector: SPEAK

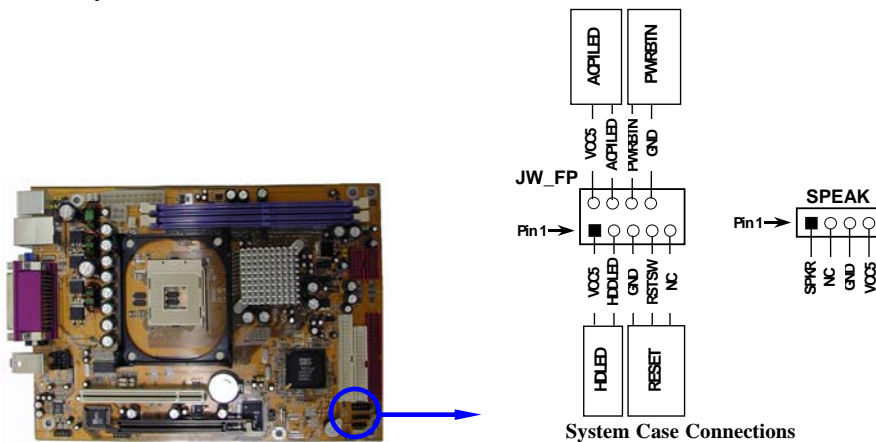
This 4-pin connector connects to the case-mounted speaker. See the figure below.

(7) Power LED: PWR-LED

The Power LED is light on while the system power is on. Connect the Power LED from the system case to this pin.

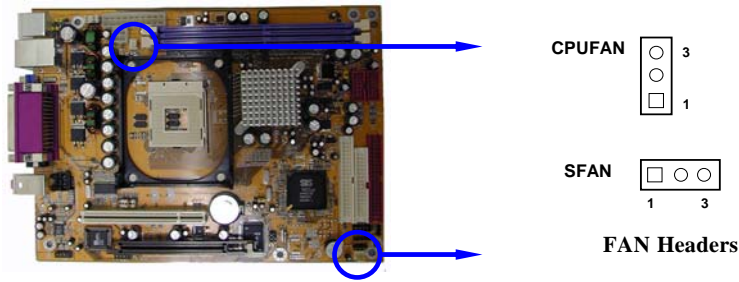
(8) Power switch: PWR-BTN

This 2-pin connector connects to the case-mounted power switch to power ON/OFF the system.



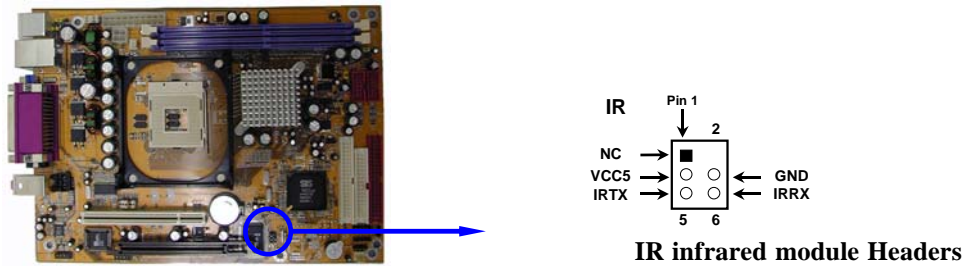
(9) FAN Headers (3-pin) : SFAN, CPUFAN

These connectors support cooling fans of 350mA (4.2 Watts) or less, depending on the fan manufacturer, the wire and plug may be different. The red wire should be positive, while the black should be ground. Connect the fan's plug to the board taking into consideration the polarity of connector.



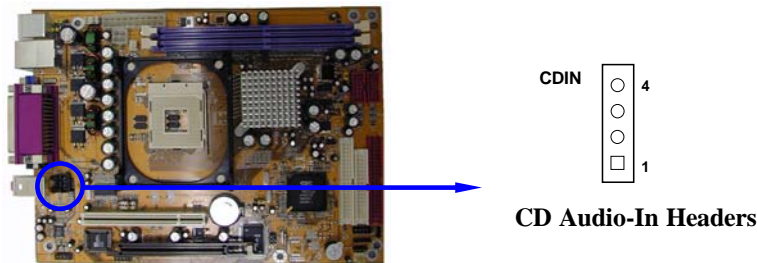
(10) IR infrared module Headers (5-pin) : IR

This connector supports the optional wireless transmitting and receiving infrared module. You must configure the setting through the BIOS setup to use the IR function.



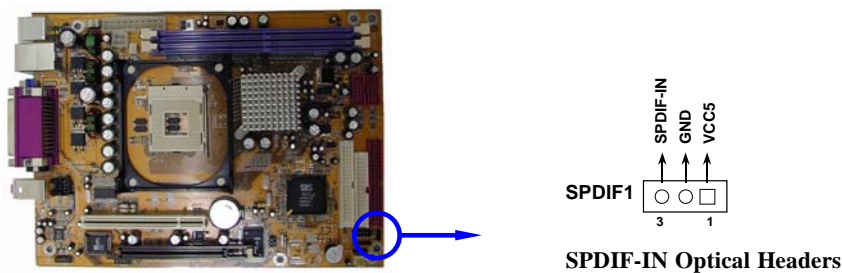
(11) CD Audio-In Headers (4-pin) : CDIN

CDIN are the connectors for CD-Audio Input signal. Please connect it to CD-ROM CD-Audio output connector.



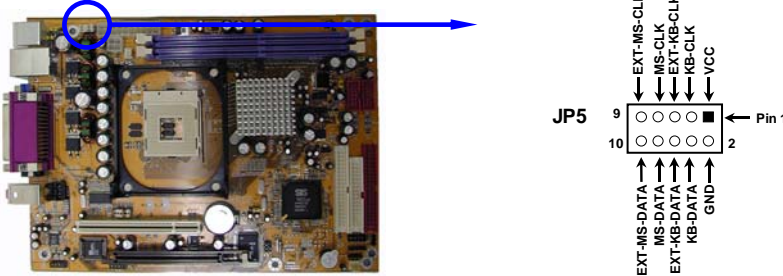
(12) SPDIF-In Optical header (3-pin) : SPDIF1

This header is for SPDIF-In Optical Receiver Connector, by this connector you can input digital signal from other device such like CD-ROM, CD player to get high quality audio.



(14) Remote Control Receiver header (10-pin) : JP5 (option)

This header is option for connect Remote Control Receiver, the default setting is for On board Keyboard and PS/2 Mouse. The Setting are pin #3 & #5, #7 & #9, #4 & #6, #8 & #10 are closed by jumper. When use the Remote Control Receiver please remove these jumpers.



2-7 Starting Up Your Computer

1. After all connection are made, close your computer case cover.
2. Be sure all the switch are off, and check that the power supply input voltage is set to proper position, usually in-put voltage is 220V~240V or 110V~120V depending on your country's voltage used.
3. Connect the power supply cord into the power supply located on the back of your system case according to your system user's manual.
4. Turn on your peripheral as following order:
 - a. Your monitor.
 - b. Other external peripheral (Printer, Scanner, External Modem etc...)
 - c. Your system power. For ATX power supplies, you need to turn on the power supply and press the ATX power switch on the front side of the case.
5. The power LED on the front panel of the system case will light. The LED on the monitor may light up or switch between orange and green after the system is on. If it complies with green standards or if it is has a power standby feature. The system will then run power-on test. While the test are running, the BIOS will alarm beeps or additional message will appear on the screen.

If you do not see any thing within 30 seconds from the time you turn on the power. The system may have failed on power-on test. Recheck your jumper settings and connections or call your retailer for assistance.

Beep	Meaning
One short beep when displaying logo	No error during POST
Long beeps in an endless loop	No DRAM install or detected
One long beep followed by three short beeps	Video card not found or video card memory bad
High frequency beeps when system is working	CPU overheated System running at a lower frequency

6. During power-on, press <Delete> key to enter BIOS setup. Follow the instructions in BIOS SETUP.
7. **Power off your computer:** You must first exit or shut down your operating system before switch off the power switch. For ATX power supply, you can press ATX power switching after exiting or shutting down your operating system. If you use Windows 9X, click “**Start**” button, click “**Shut down**” and then click “**Shut down the computer?**” The power supply should turn off after windows shut down.

Chapter 3

Introducing BIOS

The BIOS is a program located on a Flash Memory on the motherboard. This program is a bridge between motherboard and operating system. When you start the computer, the BIOS program gain control. The BIOS first operates an auto-diagnostic test called POST (power on self test) for all the necessary hardware, it detects the entire hardware device and configures the parameters of the hardware synchronization. Only when these tasks are completed done it gives up control of the computer to operating system (OS). Since the BIOS is the only channel for hardware and software to communicate, it is the key factor for system stability, and in ensuring that your system performance as its best.

In the BIOS Setup main menu of Figure 3-1, you can see several options. We will explain these options step by step in the following pages of this chapter, but let us first see a short description of the function keys you may use here:

- Press <Esc> to quit the BIOS Setup.

-
-
- Press ↑↓←→ (up, down, left, right) to choose, in the main menu, the option you want to confirm or to modify.
 - Press <F10> when you have completed the setup of BIOS parameters to save these parameters and to exit the BIOS Setup menu.
 - Press Page Up/Page Down or +/- keys when you want to modify the BIOS parameters for the active option.

3-1 Entering Setup

Power on the computer and by pressing immediately allows you to enter Setup. If the message disappears before your respond and you still wish to enter Setup, restart the system to try again by turning it OFF then ON or pressing the “RESET” button on the system case. You may also restart by simultaneously pressing <Ctrl>, <Alt> and <Delete> keys. If you do not press the keys at the correct time and the system does not boot, an error message will be displayed and you will again be asked to

Press <F1> to continue, <Ctrl-Alt-Esc> or to enter Setup

3-2 Getting Help

Main Menu

The on-line description of the highlighted setup function is displayed at the bottom of the screen.

Status Page Setup Menu/Option Page Setup Menu

Press F1 to pop up a small help window that describes the appropriate keys to use and the possible selections for the highlighted item. To exit the Help Window, press <Esc>.

3-3 The Main Menu

Once you enter Award® BIOS CMOS Setup Utility, the Main Menu (Figure 3-1) will appear on the screen. The Main Menu allows you to select from fourteen setup functions and two exit choices. Use arrow keys to select among the items and press <Enter> to accept or enter the sub-menu.

Standard CMOS Features	Miscellaneous Control
Advanced BIOS Features	Load optimized Defaults
Advanced Chipset Features	Load Standard Defaults
Integrated Peripherals	Set Supervisor Password
Power Management Setup	Set User Password
PnP/PCI Configurations	Save & Exit Setup
PC Health Status	Exit Without Saving
Esc : Quit	
F10 : Save & Exit Setup	
↑↓←→ : Select Item	
Time, Date, Hard Disk Type...	

Figure 3-1

Standard CMOS Features

Use this Menu for basic system configurations.

Advanced BIOS Features

Use this menu to set the Advanced Features available on your system.

Advanced Chipset Features

Use this menu to change the values in the chipset registers and optimize your system's performance.

Integrated Peripherals

Use this menu to specify your settings for integrated peripherals.

Power Management Setup

Use this menu to specify your settings for power management.

PnP/PCI configurations

This entry appears if your system supports PnP/PCI.

PC Health Status

This entry shows your PC health status.

Miscellaneous Control

Use this menu to specify your settings for Miscellaneous control.

Load Optimized Defaults

Use this menu to load the BIOS default values these are setting for optimal performances system operations for performance use.

Load Standard Defaults

Use this menu to load the BIOS default values for the stable performance system operation that are factory settings for normal use.

Set Supervisor/User Password

Use this menu to set User and Supervisor Passwords.

Save & Exit Setup

Save CMOS value changes to CMOS and exit setup.

Exit Without Saving

Abandon all CMOS value changes and exit setup.

3-4 Standard CMOS Features

The items in Standard CMOS Setup Menu are divided into several categories. Each category includes no, one or more than one setup items. Use the arrow keys to highlight the item and then use the <PgUp> or <PgDn> keys to select the value you want in each item.

CMOS Setup Utility - Copyright(C) 1984-2003 Award Software		
Standard CMOS Features		
Date (mm:dd:yy)	Fri, Feb, 21 2003	Item Help
Time (hh:mm:ss)	18 : 40 : 32	
> IDE Primary Master	Press Enter None	Menu Level > Change the day, month, year and century
> IDE Primary Slave	Press Enter None	
> IDE Secondary Master	Press Enter None	
> IDE Secondary Slave	Press Enter None	
Drive A	1.44M, 3.25 in.	
Drive B	None	
Video	EGA/VGA	
Halt On	All,But Keyboard	
Base Memory	640K	
Extended Memory	56320K	
Total Memory	57344K	
↑↓→← Move Enter:Select +/-/PU/PD:Value F10:Save ESC:Exit F1:General Help F5:Previous Values F6:Optimized Defaults F7:Standard Defaults		

Date

The date format is <day><month><date><year>.

Day Day of the week, from Sun to Sat, determined by BIOS. Read-only.

Month The month from Jan. through Dec.

Date The date from 1 to 31 can be keyed by numeric function keys.

Year The year depends on the year of the BIOS.

Time

The time format is <hour><minute><second>.

Primary Master/Primary Slave

Secondary Master/Secondary Slave

Press PgUp/<+> or PgDn/<-> to select Manual, None, Auto type. Note that the specifications of your drive must match with the drive table. The hard disk will not work properly if you enter improper information for this category. If your hard disk drive type is not matched or listed, you can use Manual to define your own drive type manually.

If you select Manual, related information is asked to be entered to the following items. Enter the information directly from the keyboard. This information should be provided in the documentation from your hard disk vendor or the system manufacturer.

If the controller of HDD interface is SCSI, the selection shall be "None".

If the controller of HDD interface is CD-ROM, the selection shall be "None"

Access Mode The settings are Auto Normal, Large, and LBA.

Cylinder number of cylinders

Head number of heads

Precomp write precomp

Landing Zone landing zone

Sector number of sectors

3-5 Advanced BIOS Features

CMOS Setup Utility - Copyright(C) 1984-2003 Award Software
Advanced BIOS Features

		Item Help
Anti-Virus Protection	Disabled	
CPU L1 & L2 Cache	Enabled	
CPU L2 Cache ECC Checking	Disabled	
Quick Power On Self Test	Enabled	
First Boot Device	Floppy	
Second Boot Device	HDD-0	
Third Boot Device	CDROM	
Boot Other Device	Enabled	
Swap Floppy Drive	Disabled	
Boot Up Floppy Seek	Enabled	
Boot Up NumLock Status	On	
Gate A20 Option	Fast	
Typematic Rate Setting	Disabled	
Typematic Rate (Chars/Sec)	6	
Typematic Delay (Msec)	250	
Security Option	Setup	
OS Select For DRAM > 64MB	Non-OS2	
HDD S.M.A.R.T. Capability	Disabled	
Report No FDD For Windows	Yes	
Video BIOS Shadow	Enabled	
		Menu Level >
		Allows you to choose the VIRUS warning feature for IDE Hard Disk boot sector protection. If this function is enabled and someone attempt to write data into this area, BIOS will show a warning message on screen and alarm beep
		Enabled copies Video BIOS to shadow RAM
		Improves performance

↑↓→← Move Enter:Select +/-/PU/PD:Value F10:Save ESC:Exit F1:General Help F5:Previous Values F6:Optimized Defaults F7:Standard Defaults

Anti-Virus Protection

Allows you to choose the VIRUS Warning feature for IDE Hard Disk boot sector protection. If this function is enabled and someone attempt to write data into this area, BIOS will show a warning message on screen and alarm beep.

Disabled (default) No warning message to appear when anything attempts to access the boot sector or hard disk partition table.

Enabled Activates automatically when the system boots up causing a warning message to appear when anything attempts to access the boot sector of hard disk partition table.

CPU L1 Cache

The default value is Enabled.

Enabled (default) Enable cache

Disabled Disable cache

Note: The internal cache is built in the processor.

CPU L2 Cache

Choose Enabled or Disabled. This option enables the Level 2 cache memory.

Quick Power On Self Test

This category speeds up Power On Self Test (POST) after you power on the computer. If this is set to Enabled. BIOS will shorten or skip some check items during POST.

Enabled (default) Enable quick POST

Disabled Normal POST

First/Second/Third/ Boot Device, Boot Other Device

The BIOS attempts to load the operating system from the devices in the sequence selected in these items. The settings are Floppy, LS/ZIP, HDD-0/HDD-1/HDD-3, SCSI, CDROM, LAN and Disabled.

Swap Floppy Drive

Switches the floppy disk drives between being designated as A and B. Default is Disabled.

Boot Up Floppy Seek

During POST, BIOS will determine if the floppy disk drive installed is 40 or 80 tracks. 360K type is 40 tracks while 760K, 1.2M and 1.44M are all 80 tracks.

Boot Up NumLock Status

The default value is On.

On (default) Keypad is numeric keys.

Off Keypad is arrow keys.

Gate A20 Option

Normal The A20 signal is controlled by keyboard controller or chipset hardware.

Fast (default) The A20 signal is controlled by port 92 or chipset specific method.

Typematic Rate Setting

Keystrokes repeat at a rate determined by the keyboard controller. When enabled, the typematic rate and typematic delay can be selected. The settings are: Enabled/Disabled.

Typematic Rate (Chars/Sec)

Sets the number of times a second to repeat a keystroke when you hold the key down. The settings are: 6, 8, 10, 12, 15, 20, 24, and 30.

Typematic Delay (Msec)

Sets the delay time after the key is held down before it begins to repeat the keystroke. The settings are 250, 500, 750, and 1000.

Security Option

This category allows you to limit access to the system and Setup, or just to Setup.

System The system will not boot and access to Setup will be denied if the correct password is not entered at the prompt.

Setup (default) The system will boot, but access to Setup will be denied if the correct password is not entered prompt.

OS Select For DRAM > 64MB

Allows OS2[®] to be used with >64MB or DRAM. Settings are Non-OS/2 (default) and OS2. Set to OS/2 if using more than 64MB and running OS/2[®].

Report No FDD For Win 95

Whether report no FDD for Win 95 or not. The settings are: Yes, No.

3-6 Advanced Chipset Features

The Advanced Chipset Features Setup option is used to change the values of the chipset registers. These registers control most of the system options in the computer.

CMOS Setup Utility - Copyright(C) 1984-2003 Award Software
Advanced Chipset Features

> DRAM Timing Settings	Press Enter	Item Help
> AGP Function Settings	Press Enter	
Prefetch Caching	Disabled	
Memory Hole at 15M-16M	Disabled	Menu Level >
↑↓→← Move Enter:Select +/-/PU/PD:Value F10:Save ESC:Exit F1:General Help F5:Previous Values F6:Optimized Defaults F7:Standard Defaults		

DRAM Timing Settings

Please refer to section 3-6-1

AGP Function Settings

This option determines the effective size of the graphics aperture used in the particular PAC configuration. The AGP aperture is memory-mapped, while graphics data structure can reside in a graphics aperture. The aperture range should be programmed as not cacheable in the processor cache, accesses with the aperture range are forwarded to the main memory, then PAC will translate the original issued address via a translation table that is maintained on the main memory. The option allows the selection of an aperture size of 32MB, 64MB. Please refer to section 3-6-2

Memory Hole at 15M-16M

You can reserve this area of system memory for ISA adapter ROM. When this area is reserved, it cannot be cached. The user information of peripherals that need to use this area of system memory usually discusses their memory requirements. The settings are: Enabled and Disabled.

3-6-1 DRAM Timing Setting

CMOS Setup Utility - Copyright(C) 1984-2003 Award Software
 DRAM Timing Setting

Auto Configuration	Standard	Item Help
RAS Active Time	7T	Menu Level >>
RAS Precharge Time	2T	
RAS to CAS Delay	2T	
Write Recovery Time	2T	
CAS Latency Setting	2.5T	
↑↓→← Move Enter:Select +/-/PU/PD:Value F10:Save ESC:Exit F1:General Help F5:Previous Values F6:Optimized Defaults F7:Standard Defaults		

RAS Active Time

Select the number of SCLKs for an access cycle. The settings are: Auto (Default), 6T, 7T, 5T, 4T.

RAS Precharge Time

If an insufficient number of cycles is allowed for the RAS to accumulate its charge before DRAM refresh, the refresh may be incomplete and the DRAM may fail to retain data. *Fast* gives faster performance; and *Slow* gives more stable performance. This field applies only when synchronous DRAM is installed in the system. The settings are: 7T, 6T and 5T.

RAS to CAS Delay

This field let's you insert a timing delay between the CAS and RAS strobe signals, used when DRAM is written to, read from, or refreshed. *Fast* gives faster performance; and *Slow* gives more stable performance. This field applies only when synchronous DRAM is installed in the system. The settings are: 2T and 3T.

CAS Latency Setting

When synchronous DRAM is installed, the number of clock cycles of CAS latency depends on the DRAM timing. The settings are: Auto (Default) 2T and 3T.

3-6-2 AGP Function Settings

CMOS Setup Utility - Copyright(C) 1984-2003 Award Software
AGP Function Settings

AGP Transfer Mode Auto AGP Fast Write Disabled AGP Aperture Size 64MB AGP Aperture Write Combining Enabled AGP Driving Control Auto AGP Driving Value 88 System Share Memory Size 32MB	Item Help Menu Level >>
↑↓→← Move Enter:Select +/-/PU/PD:Value F10:Save ESC:Exit F1:General Help F5:Previous Values F6:Optimized Defaults F7:Standard Defaults	

3-7 Integrated Peripherals

CMOS Setup Utility - Copyright(C) 1984-2003 Award Software
Integrated Peripherals

> OnChip IDE Function Press Enter > OnChip Device Function Press Enter > Onboard SuperIO Function Press Enter Power Loss Function Always Off Init Display First PCI Slot	Item Help Menu Level >
↑↓→← Move Enter:Select +/-/PU/PD:Value F10:Save ESC:Exit F1:General Help F5:Previous Values F6:Optimized Defaults F7:Standard Defaults	

OnChip IDE Function

Please refer to section 3-7-1

OnChip Device Function

Please refer to section 3-7-2

Onboard SuperIO Function

Please refer to section 3-7-3

Init Display First

This item allows you to decide to activate whether PCI Slot or AGP VGA first. The settings are: PCI Slot, AGP Slot.

3-7-1 OnChip IDE Function

CMOS Setup Utility - Copyright(C) 1984-2003 Award Software
OnChip IDE Function

Internal PCI/IDE Both Primary Master PIO Auto	Item Help
---	-----------

Primary Slave	PIO	Auto	Menu Level >>
Secondary Master	PIO	Auto	
Secondary Slave	PIO	Auto	
Primary Master	UltraDMA	Auto	
Primary Slave	UltraDMA	Auto	
Secondary Master	UltraDMA	Auto	
Secondary Slave	UltraDMA	Auto	
IDE DAM Transfer Access		Enabled	
IDE Burst Mode		Enabled	
IDE HDD Block Mode		Enabled	
Delay For HDD (Secs)		0	
↑↓→← Move Enter:Select +/-/PU/PD:Value F10:Save ESC:Exit F1:General Help F5:Previous Values F6:Optimized Defaults F7:Standard Defaults			

Internal PCI/IDE

The integrated peripheral controller contains an IDE interface with support for two IDE channels. Select Both to activate each channel separately. The settings are: Both, IDE0, IDE1.

Primary/Secondary Master/Slave PIO

The four IDE PIO (Programmed Input/Output) fields let you set a PIO mode (0-4) for each of the four IDE devices that the onboard IDE interface supports. Modes 0 through 4 provide successively increased performance. In Auto mode, the system automatically determines the best mode for each device. The settings are: Auto, Mode 0, Mode 1, Mode 2, Mode 3, Mode 4.

Primary/Secondary Master/Slave UltraDMA

Ultra DMA/33 implementation is possible only if your IDE hard drive supports it and the operating environment includes a DMA driver (Windows 95 OSR2 or a third-party IDE bus master driver). If your hard drive and your system software both support Ultra DMA/33 and Ultra DMA/66, select Auto to enable BIOS support. The settings are: Auto, Disabled.

IDE HDD Block Mode

Block mode is also called block transfer, multiple commands, or multiple sector read/write. If your IDE hard drive supports block mode (most new drives do), select Enabled for automatic detection of the optimal number of block read/writes per sector the drive can support. The settings are: Enabled, Disabled.

3-7-2 OnChip Device Function

CMOS Setup Utility - Copyright(C) 1984-2003 Award Software
OnChip Device Function

USB Controller	Enabled	Item Help
USB Keyboard Legacy Support	Disabled	
ETHERNET Function	Enabled	Menu Level >>
ETHERNET Address IDE Input	Press Enter	
Current ETHERNET Address is	003018-XXXXXX	

↑↓→← Move Enter:Select +/-/PU/PD:Value F10:Save ESC:Exit F1:General Help
 F5:Previous Values F6:Optimized Defaults F7:Standard Defaults

USB Controller

Select *Enabled* if your system contains a Universal Serial Bus (USB) controller and you have a USB peripherals. The settings are: Enabled, Disabled.

USB Keyboard Legacy Support

Select *Enabled* if your system contains a Universal Serial Bus (USB) controller and you have a USB keyboard. The settings are: Enabled, Disabled.

ETHERNET Address ID Input

This item allows you to setting the Mac address from 000000 to FFFFFFFF.

3-7-3 Onboard SuperIO Function

CMOS Setup Utility - Copyright(C) 1984-2003 Award Software
 Onboard SuperIO Function

Onboard FDD Controller	Enabled	Item Help
Onboard Serial Port 1	3F8/IRQ4	
Onboard Serial Port 2	2F8/IRQ3	Menu Level >>
UART2 Mode	Normal	
IR Duplex Mode	Half	
Onboard Parallel Port	378/IRQ7	
Parallel Port Mode	SPP	
ECP Mode Use DMA	3	
↑↓→← Move Enter:Select +/-/PU/PD:Value F10:Save ESC:Exit F1:General Help F5:Previous Values F6:Optimized Defaults F7:Standard Defaults		

Onboard FDD Controller

Select Enabled if your system has a floppy disk controller (FDD) installed on the system board and you wish to use it. If you install add-on FDC or the system has no floppy drive, select Disabled in this field. The settings are: Enabled and Disabled.

Onboard Serial Port 1/Port 2

Select an address and corresponding interrupt for the first and the second serial ports. The settings are: 3F8/IRQ4, 2E8/IRQ3, 3E8/IRQ4, 2F8/IRQ3, Disabled, Auto.

UART 2 Mode

This item allows you to determine which InfraRed(IR) function of the onboard I/O chip, this functions uses.

Onboard Parallel Port

There is a built-in parallel port on the on-board Super I/O chipset that Provides Standard, ECP, and EPP features. It has the following option:

Disabled

(3BCH/IRQ7)/ Line Printer port 0

(278H/IRQ5)/ Line Printer port 2

(378H/IRQ7) Line Printer port 1

Parallel Port Mode

- SPP : Standard Parallel Port
- EPP : Enhanced Parallel Port
- ECP : Extended Capability Port

SPP/EPP/ECP/ECP+EPP

To operate the onboard parallel port as Standard Parallel Port only, choose “SPP.” To operate the onboard parallel port in the EPP modes simultaneously, choose “EPP.” By choosing “ECP”, the onboard parallel port will operate in ECP mode only. Choosing “ECP+EPP” will allow the onboard parallel port to support both the ECP and EPP modes simultaneously. The ECP mode has to use the DMA channel, so choose the onboard parallel port with the ECP feature. After selecting it, the following message will appear: “ECP Mode Use DMA” at this time, the user can choose between DMA channels 3 to 1. The onboard parallel port is EPP Spec. compliant, so after the user chooses the onboard parallel port with the EPP function, the following message will be displayed on the screen: “EPP Mode Select.” At this time either EPP 1.7 spec. or EPP 1.9 spec. can be chosen.

3-8 Power Management Setup

The Power Management Setup allows you to configure your system to most effectively save energy saving while operating in a manner consistent with your own style of computer use.

CMOS Setup Utility - Copyright(C) 1984-2003 Award Software

Power Management Setup

ACPI Function	Enabled	Item Help
ACPI Support Type	S1 (POS)	
Video Off Option	Always Off	
Video Off Method	V/H SYNC+Blank	Menu Level >
MODEM Use IRQ	Auto	
Hot key Function as	Power Off	
Power Button Function	Instant Off	
> PM Wake Up Events	Press Enter	
↑↓→← Move Enter:Select +/-/PU/PD:Value F10:Save ESC:Exit F1:General Help F5:Previous Values F6:Optimized Defaults F7:Standard Defaults		

ACPI Function

This item allows you to Enabled/Disabled the Advanced Configuration and Power Management (ACPI). The settings are Enabled and Disabled.

Video Off Option

This determines the manner in which the monitor is blanked. The choice are Suspend → off, All Modes → Off, and Always On.

Video Off Method

This determines the manner in which the monitor is blanked.

- DPMS (default)** Initial display power management signaling.
- Blank Screen** This option only writes blanks to the video buffer.
- V/H SYNC+Blank** This selection will cause the system to turn off the vertical and horizontal synchronization ports and write blanks to the video buffer.

Modem Use IRQ

This determines the IRQ in which the MODEM can use.

The settings are: 3, 4, 5, 7, 9, 10, 11, NA.

Power Button Function

Pressing the power button for more than 4 seconds forces the system to enter the Soft-Off state. The settings are: Delay 4 Sec, Instant-Off.

PM Wake Up Events

Please refer to section 3-8-1

3-8-1 PM Wake Up Events

CMOS Setup Utility - Copyright(C) 1984-2003 Award Software

PM Wake Up Events

IRQ [3-7,9-15],NMI	Enabled	Item Help
IRQ 8 Break Suspend	Disabled	
RING Power Up Control	Disabled	
MACPME Power UP Control	Disabled	Menu Level >>
KB Power ON Password	Enter	
Power Up by Alarm	Disabled	
x Month Alarm	NA	
x Day of Month Alarm	NA	
x Time (hh:mm:ss) Alarm	0 : 0 : 0	
↑↓→← Move Enter:Select +/-/PU/PD:Value F10:Save ESC:Exit F1:General Help		
F5:Previous Values F6:Optimized Defaults F7:Standard Defaults		

Ring Power Up Control

During Disabled, the system will ignore any incoming call from the modem. During Enabled, the system will boot up if there's an incoming call from the modem.

PCIPME Power Up Control

This will enable the system to wake up by PCI device Power Management function. The settings are: Enabled and Disabled.

KB Power ON Password

This item can setting Power On Password, if you Enabled keyboard Power On function then you can Power On system by key-in the password which you setting.

Power Up by Alarm

This function is for setting date and time for your computer to boot up. During Disabled, you cannot use this function. During Enabled, choose the Date and Time Alarm:

Date(of month) Alarm

You can choose which month the system will boot up. Set to 0, to boot every day.

Time(hh:mm:ss) Alarm

You can choose what hour, minute and second the system will boot up.

Note: If you have change the setting, you must let the system boot up until it goes to the operating system, before this function will work.

3-9 PnP/PCI Configuration Setup

This section describes configuring the PCI bus system. PCI, or **P**ersonal **C**omputer **I**nterconnect, is a system which allows I/O devices to operate at speeds nearing the speed the CPU itself uses when communicating with its own special components. This section covers some very technical items and it is strongly recommended that only experienced users should make any changes to the default settings.

CMOS Setup Utility - Copyright(C) 1984-2003 Award Software
PnP/PCI Configurations

Reset Configuration Data	Disabled	Item Help
Resources Controlled By	Manual	
> IRQ Resources	Press Enter	Menu Level >
PCI/VGA Palette Snoop	Disabled	Default is Disabled.
Assign IRQ For VGA	Enabled	Select Enabled to
Assign IRQ For USB	Enabled	reset Extended System
		Configuration Data
		(ESCD) when you exit
		Setup if you have
		installed a new add-on
		and the system
		reconfiguration has
		caused such a serious
		conflict that the OS
		cannot boot
↑↓→← Move Enter:Select +/-/PU/PD:Value F10:Save ESC:Exit F1:General Help		
F5:Previous Values F6:Optimized Defaults F7:Standard Defaults		

Reset Configuration Data

Normally, you leave this field Disabled. Select Enabled to reset Extended System Configuration Data (ESCD) when you exit Setup if you have installed a new add-on and the system reconfiguration has caused such a serious conflict that the operating system can not boot. The settings are: Enabled and Disabled.

Resource Controlled By

The Award Plug and Play BIOS has the capacity to automatically configure all of the boot and Plug and Play compatible devices. However, this capability means absolutely nothing unless you are using a Plug and Play operating system such as Windows®95/98. If you set this field to “manual” choose specific resources by going into each of the sub menu that follows this field (a sub menu is preceded by a “>”).

The settings are: Auto(ESCD), Manual.

IRQ Resources

When resources are controlled manually, assign each system interrupt a type, depending on the type of device using the interrupt.

Please refer to section 3-9-1

PCI/VGA Palette Snoop

Leave this field at *Disabled*. The settings are Enabled, Disabled.

3-9-1 IRQ Resources

CMOS Setup Utility - Copyright(C) 1984-2003 Award Software

IRQ Resources

IRQ-3 assigned to	PCI Device	Item Help
IRQ-4 assigned to	PCI Device	
IRQ-5 assigned to	PCI Device	Menu Level >>
IRQ-7 assigned to	PCI Device	
IRQ-9 assigned to	PCI Device	
IRQ-10 assigned to	PCI Device	
IRQ-11 assigned to	PCI Device	
IRQ-14 assigned to	PCI Device	
IRQ-15 assigned to	PCI Device	
↑↓→← Move Enter:Select +/-/PU/PD:Value F10:Save ESC:Exit F1:General Help		
F5:Previous Values F6:Optimized Defaults F7:Standard Defaults		

3-10 PC Health Status

This section shows the Status of you CPU, Fan, Warning for overall system status. This is only available if there is Hardware Monitor onboard.

CMOS Setup Utility - Copyright(C) 1984-2003 Award Software

PC Health Status

Shutdown Temperature	Disabled	Item Help
----------------------	----------	-----------

<pre> Show PC Health in Post Enabled Vcore 1.5V Vcc1.8V 1.80V Vcc3 3.3V Vcc5 5.01V +12V 12.02V SB3V 3.31V -12V -11.95V SB5V 5.02V Vbat 3.01V CPU Temperature 43°C/109°C System Temperature 33°C/91°C CPU Fan 5500 RPM System Fan 0 RPM </pre>	<pre> Menu Level > </pre>
<pre> ↑↓→← Move Enter:Select +/-/PU/PD:Value F10:Save ESC:Exit F1:General Help F5:Previous Values F6:Optimized Defaults F7:Standard Defaults </pre>	

Show PC Health in Post

During Enabled, it displays information list below. The choice is either Enabled or Disabled

Current CPU Temperature/Current System Temp/Current CPUFAN, SYSFAN Speed/Vcore/ Vcc/3.3V/+5V/+12V/-12V/5VSB(V)

This will show the CPU/FAN/System voltage chart and FAN Speed.

3-11 Miscellaneous Control

This section is for setting CPU Frequency Control.

CMOS Setup Utility - Copyright(C) 1984-2003 Award Software
Miscellaneous Control

<pre> CPU Clock Ratio 10 X Auto Detect DIMM/PCI Clock <u>Enabled</u> Spread Spectrum Disabled Clock Control By Software ** Current Host Clock is 100/33MHz ** HOST/PCI Clock at Next Boot is 100/33MHz ** Current DRAM Clock is 100 MHz ** DRAM Clock at Next Boot is 100MH (HOST CLK) </pre>	<pre> Item Help Menu Level > </pre>
<pre> ↑↓→← Move Enter:Select +/-/PU/PD:Value F10:Save ESC:Exit F1:General Help F5:Previous Values F6:Optimized Defaults F7:Standard Defaults </pre>	

Auto Detect DIMM/PCI Clock

This item allows you to enable/disable auto detect DIMM/PCI Clock.

The settings are: Enabled, Disabled.

Clock Control

This item allows you to set the CPU Host Clock by Hardware (CPU/PCI 100/33MHz) or by Software (BIOS)

Host/PCI clock at Next boot is

When Clock Control setting By Software this item allows you to set CPU Host Clock step by step from 100MHz to 200MHz, use Page Down/Page Up key can change the frequency to approach over clocking.

DRAM Clock at Next Boot is

This item allows you to set the DRAM clock synchronous as CPU Host Clock or Asynchronous as Host clock 100MHz, 133MHz, 166MHz to approach your DDR SDRAM specification.

3-12 Load Standard/Optimized Defaults

Load Standard Defaults

When you press <Enter> on this item, you get confirmation dialog box with a message similar to:

Load Standard Defaults (Y/N)? N

Pressing <Y> loads the BIOS default values for the most stable, minimal-performance system operations.

Load Optimized Defaults

When you press <Enter> on this item, you get a confirmation dialog box with a message similar to:

Load Optimized Defaults (Y/N)? N

Pressing <Y> loads the default values that are factory settings for optimal performance system operations.

3-13 Set Supervisor/User Password

You can set either supervisor or user password, or both of them. The differences are:

Supervisor password: Can enter and change the options of the setup menus.

User password: Can only enter but do not have the right to change the options of the setup menus. When you select this function, the following message will appear at the center of the screen to assist you in creating a password.

ENTER PASSWORD:

Type the password, up to eight characters in length, and press <Enter>. The password typed now will clear any previously entered password from CMOS memory. You will be asked to confirm the password. Type the password again and press <Enter>. You may also press <Esc> to abort the selection and not enter a password.

To disable a password, just press <Enter> when you are prompted to enter the password. A message will confirm that the password will be disabled. Once the password is disabled, the system will boot and you can enter Setup freely.

PASSWORD DISABLED.

When a password has been enabled, you will be prompted to enter it every time you try to enter Setup. This prevents an unauthorized person from changing any part of your system configuration.

Additionally, when a password is enabled, you can also require the BIOS to request a password every time your system is rebooted. This would prevent unauthorized use of your computer.

You determine when the password is required within the BIOS Features Setup Menu and its Security option. If the Security option is set to "System", the password will be required both at boot and at entry to Setup. If set to "Setup", prompting only occurs when trying to enter Setup.

Chapter 4

DRIVER & FREE PROGRAM INSTALLATION

Check your package and there is A MAGIC INSTALL CD included. This CD consists of all DRIVERS you need and some free application programs and utility programs. In addition, this CD also include an auto detect software which can tell you which hardware is installed, and which DRIVERS needed so that your system can function properly. We call this auto detect software MAGIC INSTALL.

MAGIC INSTALL Supports WINDOWS 95/98/98SE/ME/NT4.0/2000/XP

Insert CD into your CD-ROM drive and the MAGIC INSTALL Menu should appear as below. If the menu does not appear, double-click MY COMPUTER / double-click CD-ROM drive or click START / click RUN / type X:\SETUP.EXE (assuming X is your CD-ROM drive).



From MAGIC INSTALL MENU you may make 12 selections:

1. AGPVXD install AGPVXD file when use External AGP card
2. VGA install SiS 651 On-chip VGA driver
3. SOUND install ALC Audio driver
4. LAN install LAN controller driver
5. USB2.0 install USB 2.0 driver
6. DIRECTX8 install Microsoft DirectX 8.1 driver
7. PC-CILLIN install PC-CILLIN2002 anti-virus program
8. PC-HEALTH installs SMART GUARDIAN software for hardware monitoring device
9. MAGIC BIOS install BIOS Live Update Utility
10. LANLED Install LAN State Utility
11. BROWSE CD to browse the contents of the CD
12. EXIT to exit from MAGIC INSTALL menu

4-1 AGPVXD Install SiS AGPVXD Driver

The AGPVXD Driver is Only For AGP Slot VGA CARD User, before install AGP card driver please install this AGPVXD driver first.

The path of the file:

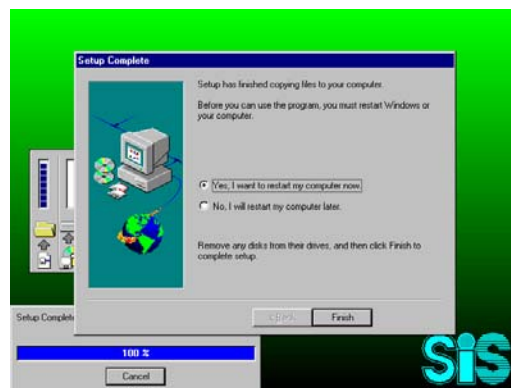
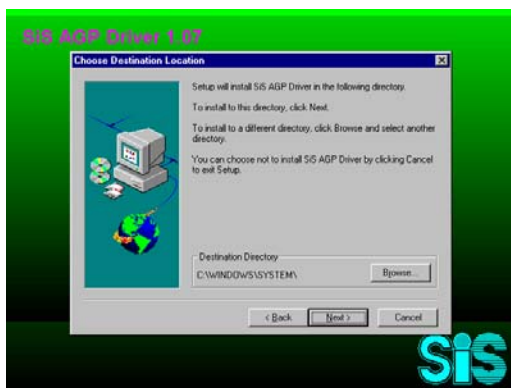
for WINDOWS 9X is X:\SIS650\AGPVXD\WIN9X\SETUP.EXE
(including WIN95/98/98SE/ME)

for WINDOWS 2000/XP is X:\SIS650\AGPVXD\WIN2K_XP\SETUP.EXE

For WINDOWS 95/98/98SE/ME/2000/XP



1. Click AGPVXD when Magic Install MENU appears
2. Click Next when SiS Acceleration Graphic Port appears



3. Click NEXT or choose BROWSE to change the path For the file to be stored
4. After Setup complete please select restart my computer now and click Finish to complete setup

4-2 VGA Install SiS 650 VGA Driver

The path of the file:

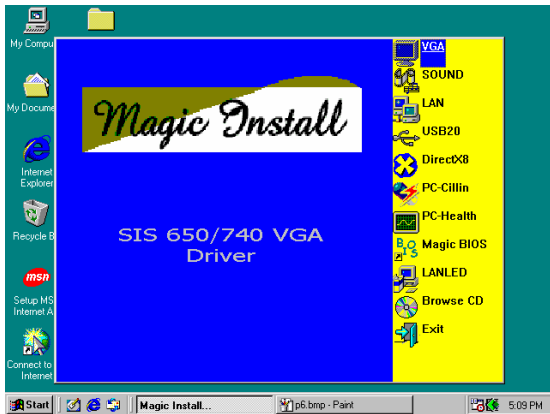
for WINDOWS 9X is X:\SIS650\VGA\WIN9X\SETUP.EXE (including Windows 98/98SE/ME)

for WINDOWS NT4.0 is X:\SIS650\VGA\WINNT40

for WINDOWS 2000 is X:\SIS650\VGA\WIN2000\SETUP.EXE

for LINUX is X:\SIS650\LINUX

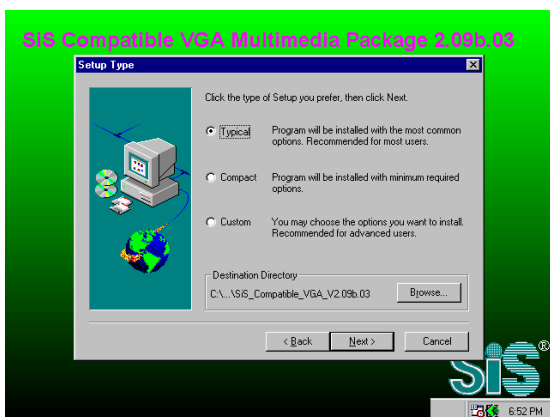
For WINDOWS 98/98SE/ME/2000



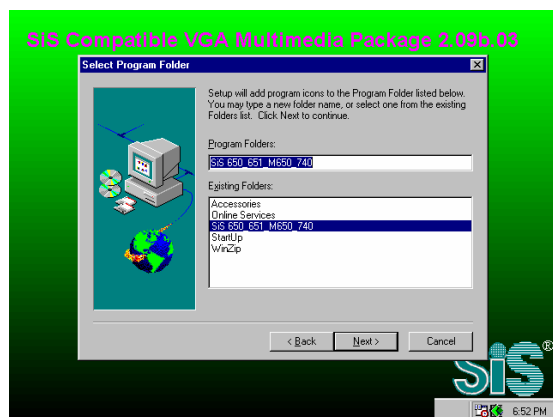
1. Click VGA when Magic Install MENU appears



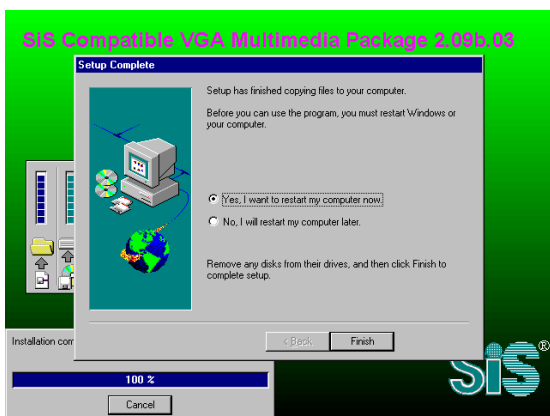
2. Click Next when SiS Compatible Multimedia Package appears



3. Multimedia Package support three types of Setup: Typical, Compact, Custom Please choice Typical and Click Next to continue step



4. System will add program icons to the Program Folder listed. Click Next to continue, and after "Start Copying Files" window appears click Next



5. After Setup complete please select restart my computer now and click Finish to complete setup

4-3 SOUND Install ALC Audio Codec Driver



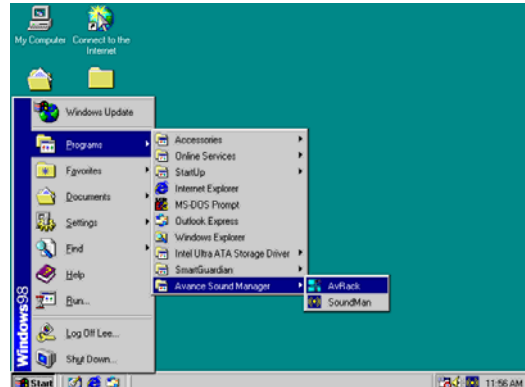
1. Click SOUND when MAGIC INSTALL MENU appears



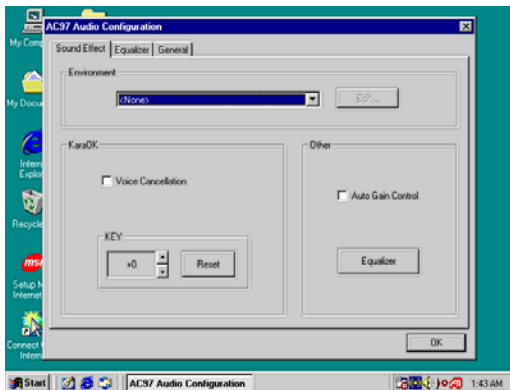
2. Then auto detect operation system language edition, click OK, start to install DRIVER



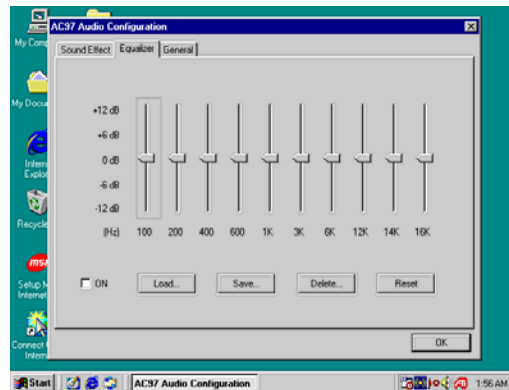
3. Click Finish and Restart Windows



4. Click Start→Program→Avance Sound Manager→AvRack. Then AVRACK Windows appears



5. Sound Effect select and KaraOK Mode Function



6. Manual Sound Effect Setting

Note: The path of the file

For WIN98/NT4.0/WIN2K/XP is X:\CODEC\ALC\SETUP.EXE

4-4 LAN install LAN controller driver

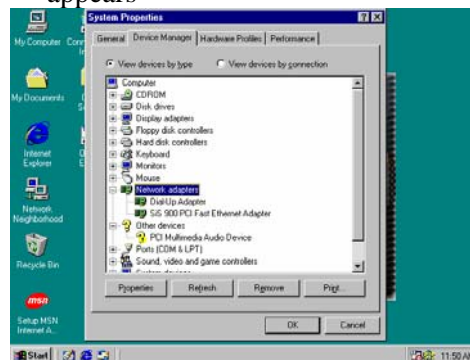
The path of the file:

for WINDOWS 9X/2000 is X:\SIS650\LANDRV\SETUP.EXE
(Including WINDOWS 95/98/98SE/98ME/2000)

for WINDOWS NT4.0 is X:\SIS650\LANDRV\NT40
WINDOWS 95/98/98SE/98ME/2000 Setup



1. Click LAN when Magic Install Menu appears
2. Click NEXT when SiS PCI LAN Driver Setup appears

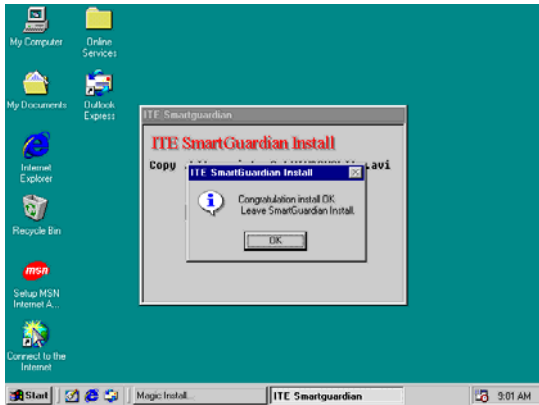


3. Choice restart my computer now to finish setting up LAN Card, click Finish to complete setup
4. After restart computer you can check in control Panel\System Device Manager\ Network adapters to make sure LAN card Driver setup completely Click NEXT when SiS PCI LAN Driver Setup appears

4-5 PC-HEALTH installs SMART GUARDIAN software for hardware monitoring device



1. Click PC-HEALTH when MAGIC INSTALL MENU appears
2. Click Install when SMART GUARDIAN INSTALL appears

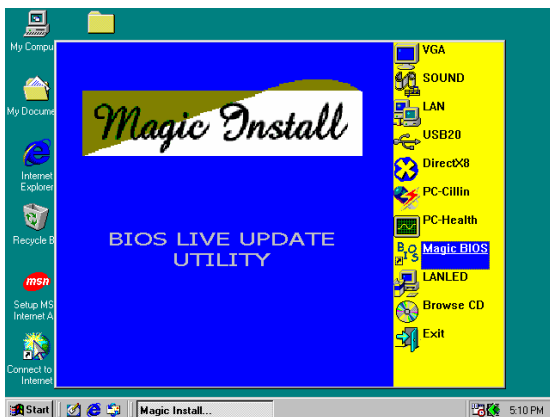


3. Click OK after the software is installed

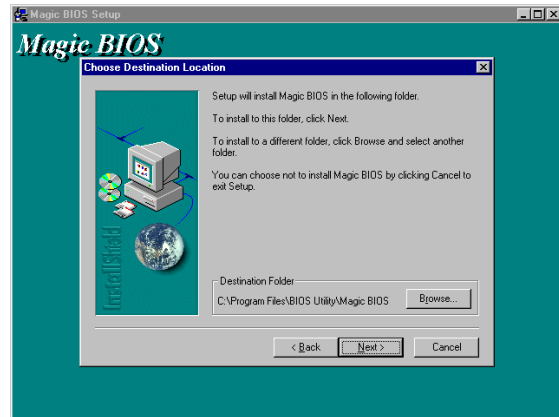
4. SMART GUARDIAN Utility

**NOTE: MAGIC INSTALL will auto detect file path X:\SIS650\HEALTH\SETUP.EXE
This driver supports WINDOWS 95/98/98SE/NT4.0/2000**

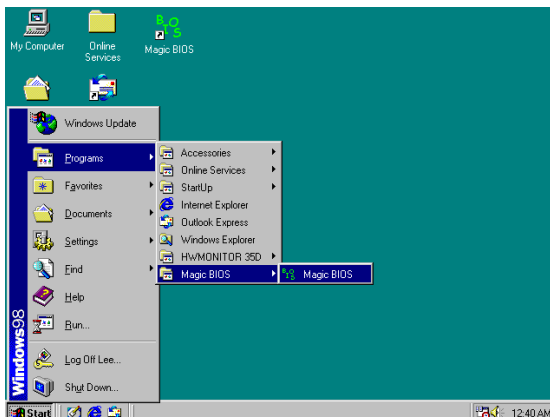
4-6 MAGIC BIOS Install BIOS Live Update Utility



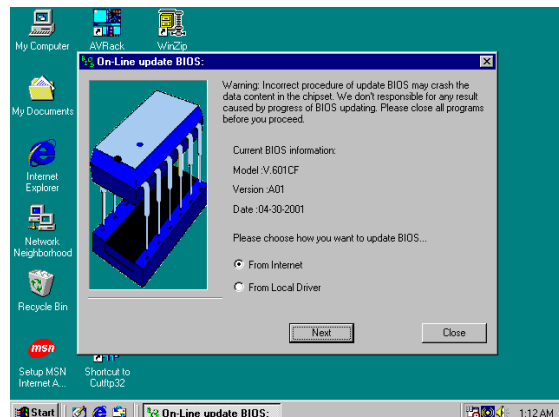
1. Click Magic BIOS when Magic Install MENU appears



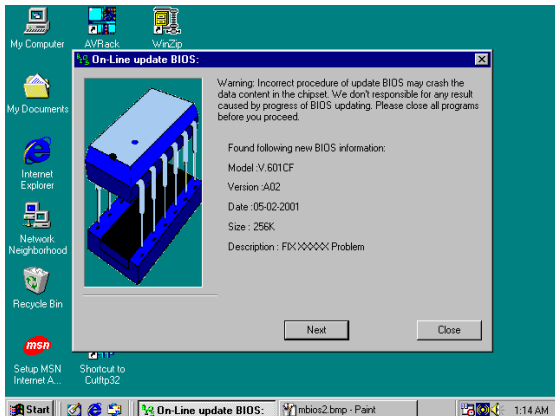
2. Click Next to install the Magic BIOS in Destination Folder



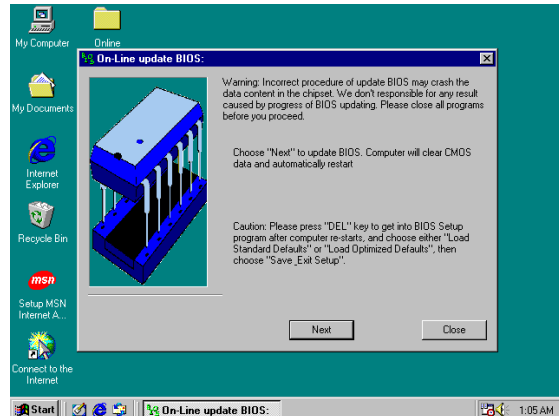
3. After finish Setup you will have a Magic BIOS icon in your screen



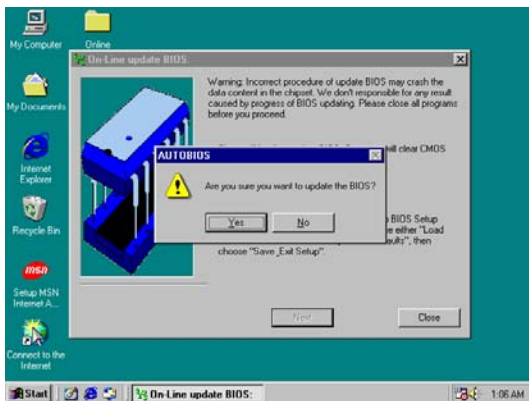
4. Double click the Magic BIOS icon you will have this picture, choose from internet you can upgrade BIOS On-line



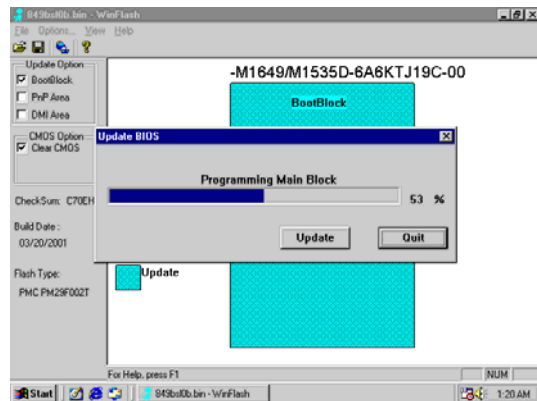
5. When On-line update BIOS the program will auto-check your BIOS version



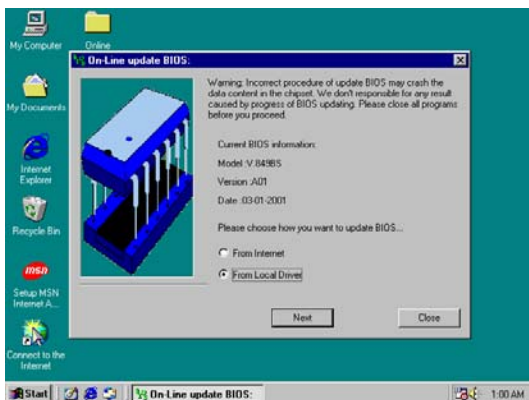
6. Click Next if you need update BIOS, after upgrade BIOS, the system will clear CMOS and automatically restart



7. Click Yes if you want to update the BIOS otherwise choose No to exit



8. When System programming BIOS don't turn off power, after finish update BIOS, the system will clear CMOS and automatically Restart



9. When choose From Local Driver to update BIOS, you must have the correct BIOS file in your Local Driver

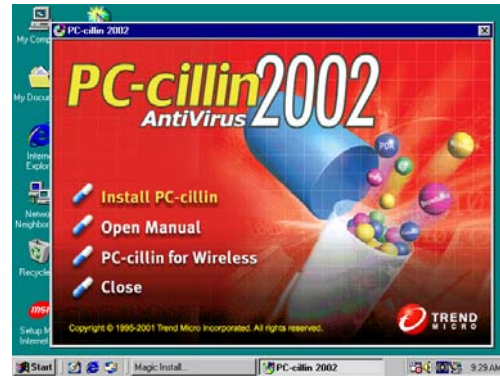


10. Choose the correct BIOS file to update BIOS

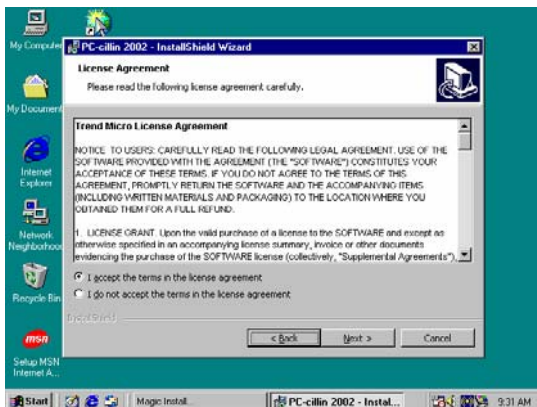
4-7 PC-CILLIN Install PC-CILLIN 2002 Anti-virus program



1. Click PC-CILLIN when MAGIC INSTALL MENU appear



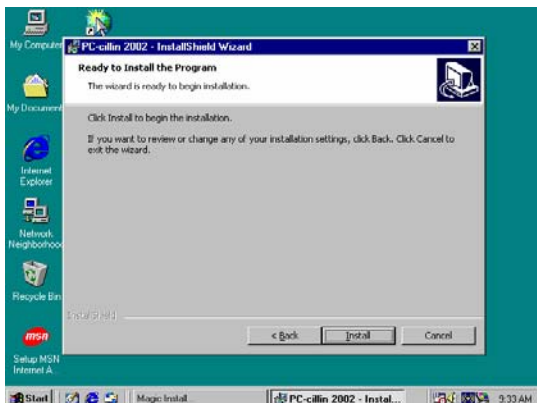
2. (1) Click "Install PC-CILLIN" when PC-CILLIN 2002 main menu appears, and Click NEXT when "Install Shield Wizard For PC-CILLIN 2002"
- (2) Click Open Manual. you can learn PC-CILLIN 2002 how to use



3. This is license agreement, select "I Accept the terms" and Click NEXT



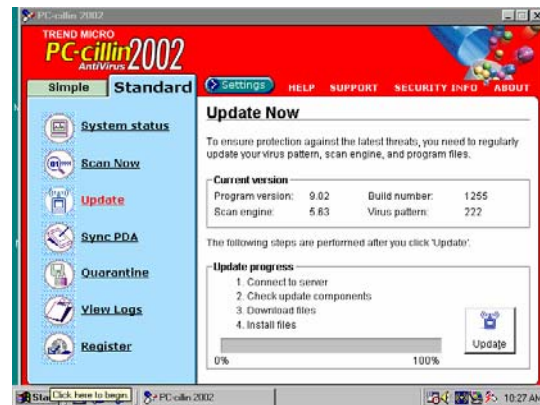
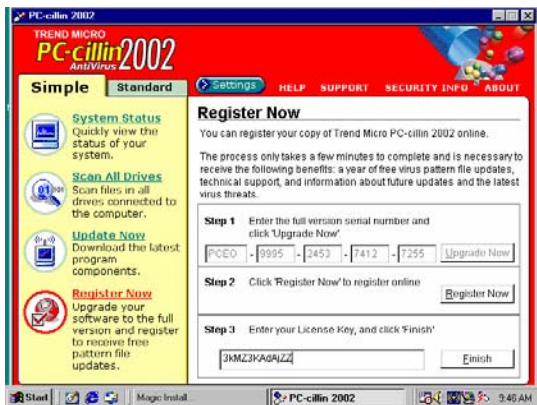
4. Click NEXT and Enter your Customer Information, Click NEXT or choose Change to change the path for the file to be stored



5. Click INSTALL, Start to install the software



6. Setup Complete and click FINISH



7. After PC-CILLIN 2002 complete, Please register your information and get LICENSE KEY from TREND MICRO web site, enter your license key and click FINISH

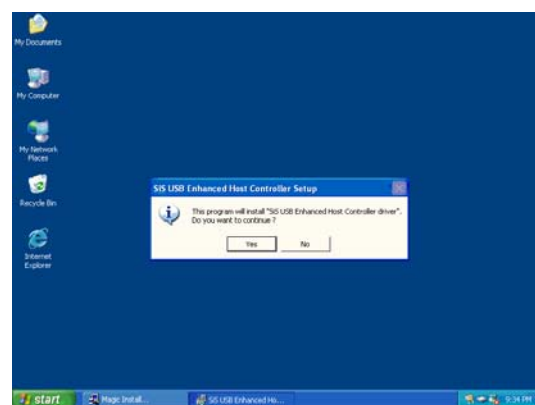
8. finish register process, we recommend select update item to download newest engine code and virus code

Note : Please install ACROBAT READER, Before you read PC-CILLIN 2002 User Manual, the path at X:\acrobat\ar500eng.exe

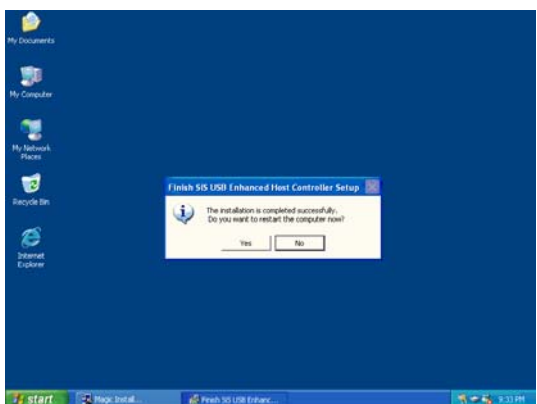
4-8 USB2.0 Install SIS USB2.0 DEVICE DRIVER



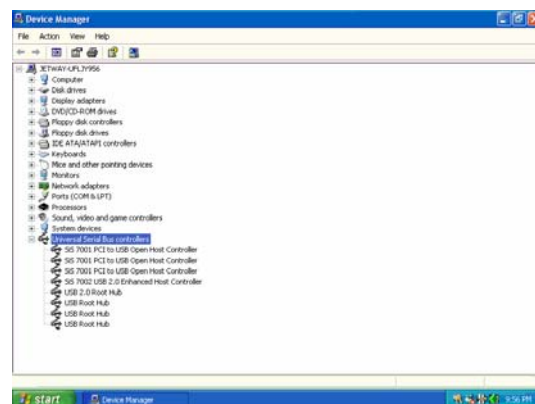
1. Click USB2.0 when MAGIC INSTALL MENU Appear



2. When SIS USB Enhanced Host Controller Setup appears , Click YES



3. When Finish SIS USB Enhanced Host Controller Setup appears , Click YES and restart computer



4. Check device working properly in Device Manager

4-9 HOW TO DISABLE ON-BOARD SOUND

Enter BIOS SETUP choose INTEGRATE PERIPHERALS choose ON-CHIP DEVICE FUNCTION choose AC97 SOUND DEVICE

Disable on-board sound function by press PAGE DOWN KEY to Disable

4-10 HOW TO UPDATE BIOS

Method 1. Use “Magic BIOS” update BIOS in Windows 98 (refer [page 41](#))

Method 2. In DOS Mode

STEP 1. Prepare a boot disc. (you may make one by click START click RUN type SYS A: click OK)

STEP 2. Copy utility program to your boot disc. You may copy from DRIVER CD X:\FLASH\AWDFLASH.EXE or download from our web site.

STEP 3. Copy latest BIOS for 650EFC from our web site to your boot disc.

STEP 4. Insert your boot disc into A:,

start the computer, type “Awdflash A:\650EFCAXxx.BIN /SN/PY/CC/R”

650EFCAXxx.BIN is the file name of latest BIOS it can be 650EFCAX03.BIN or 650EFCB02.BIN

SN means don't save existing BIOS data

PY means renew existing BIOS data

CC means clear existing CMOS data

R means restart computer

STEP 5. Push ENTER and the BIOS will be updated, computer will be restarted automatically