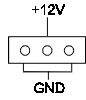
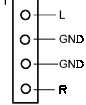


Quick Connector and Jumper Reference

FAN1/FAN2: CPU/System cooling fan connector

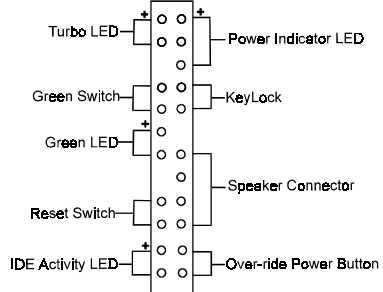


J 5: CD-ROM audio in

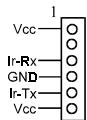


J 6: FAN78 connector

J 7: Front Panel connector set



JP2: Infrared connector

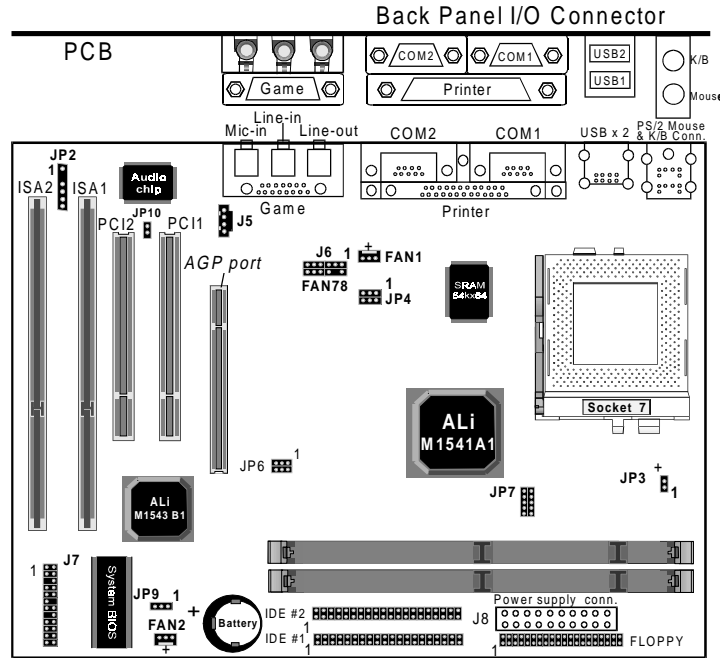


JP9: Clear CMOS data jumper

- 1~2 : Normal(default)
- 2~3 : Clear CMOS data

JP10: On-board Audio Chip jumper

- Short : Enable
- Open : Disable



Vcore	JP7	Vcore	JP7
1.7V		2.7V	
1.8V		2.8V	
1.9V		2.9V	
2.0V		3.0V	
2.1V		3.1V	
2.2V		3.2V	
2.3V		3.3V	
2.4V		3.4V	
2.5V		3.5V	
2.6V			

System Freq.	JP6
60MHz	
66MHz	
68.5MHz	
75MHz	
83MHz	
95MHz	
100MHz	

Freq. Ratio	JP4
x 2	
x 2.5	
x 3	
x 3.5	
x 4	
x 4.5	
x 5	
x 5.5	

CPU-type	CPU Power Voltage			System freq.		Freq. ratio			
	I/O Vcc	Core Vcc	JP3	MHz	JP6	Speed rate	JP4		
Intel	3.5			66		x2			
						x2.5			
						x3			
	3.3	2.8				x2.5			
						x3			
Cyrilx /IBM	3.5			66		x2			
						2.8		x2.5	
								x3	
						3.3	2.9		75
	x2								
	x2.5								
	x3								
	3.3	2.9				83			
						x2.5			
	MII-300					66		x3.5	
x2									
x3									
x3									
AMD	3.5			66		x2.5			
						2.9		x3	
								x3.5	
	3.2					x3.5			
								x2	
								x3	

