

Main Menu

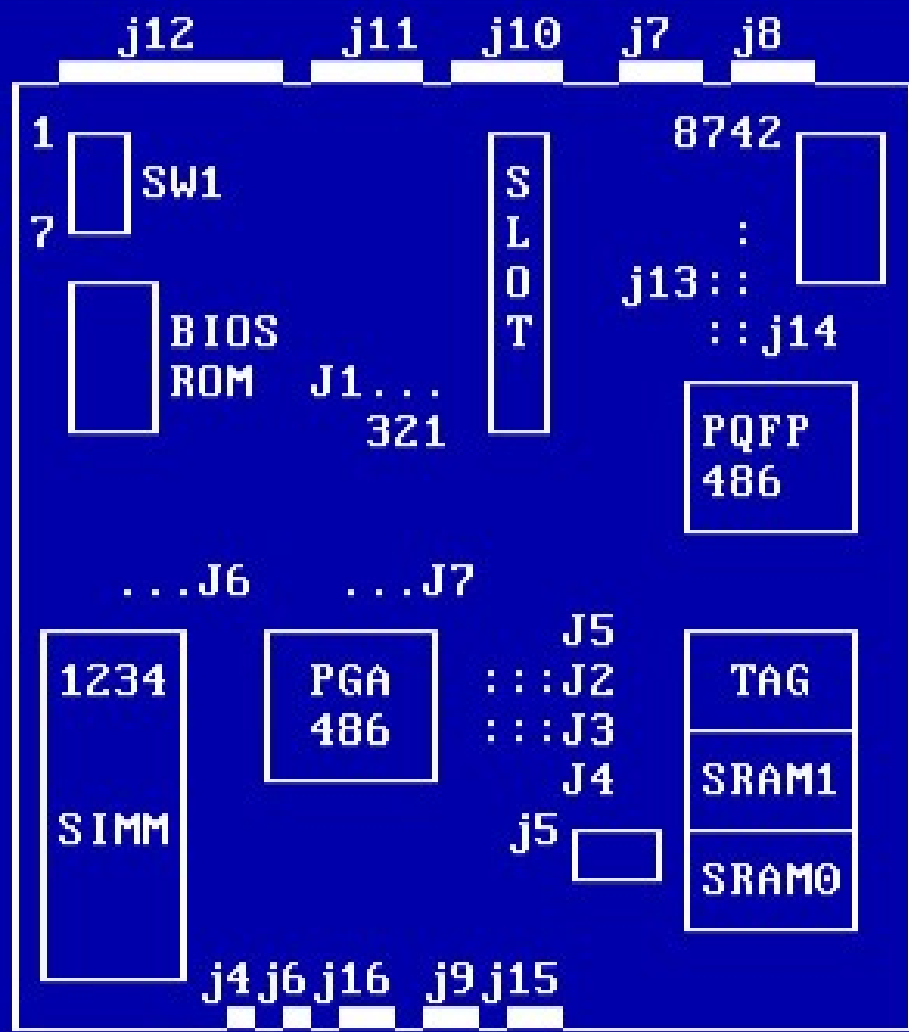
- 1 : DIP Switch
- 2 : Jumper
- 3 : Connector
- 4 : SIMM Type
- 5 : Cache Type
- 6 : HDD Table
- 7 : Key Combination

[ESC:EXIT, 1-7 or ↓→↑←:Menu Select]

DIP Switch Define (SW1)

- 1-4 : Clock Select (DX2) (DX2)
- | | 16MHz | 20MHz | 25MHz | 33MHz | 50MHz | 66MHz |
|----|-------|-------|-------|-------|-------|-------|
| 1: | Off | Off | Off | On | Off | On |
| 2: | Off | On | On | Off | On | Off |
| 3: | On | Off | On | Off | On | Off |
| 4: | Off | On | Off | Off | Off | Off |
- 5: CPU Select
On = PGA 486, Off = PQFP 486
- 6: Video Card Select
On = Color, Off = Mono
- 7: Password Select
On = Enable, Off = Disable

TriGem 486/M Series Main Board HELP (C) 1992 TriGem Computer Inc..



- Main Menu**
- 1 : **DIP Switch**
 - 2 : Jumper
 - 3 : Connector
 - 4 : SIMM Type
 - 5 : Cache Type
 - 6 : HDD Table
 - 7 : Key Combination
- [ESC:EXIT, 1-7 or ↓↑←→:Menu Select]

DIP Switch Define (SW1)

1-4 : Clock Select (DX2) (DX2)

| | 16MHz | 20MHz | 25MHz | 33MHz | 50MHz | 66MHz |
|----|-------|-------|-------|-------|-------|-------|
| 1: | Off | Off | Off | On | Off | On |
| 2: | Off | On | On | Off | On | Off |
| 3: | On | Off | On | Off | On | Off |
| 4: | Off | On | Off | Off | Off | Off |

5: CPU Select
On= PGA 486, Off= PQFP 486

6: Video Card Select
On = Color, Off = Mono

7: Password Select
On= Enable, Off= Disable