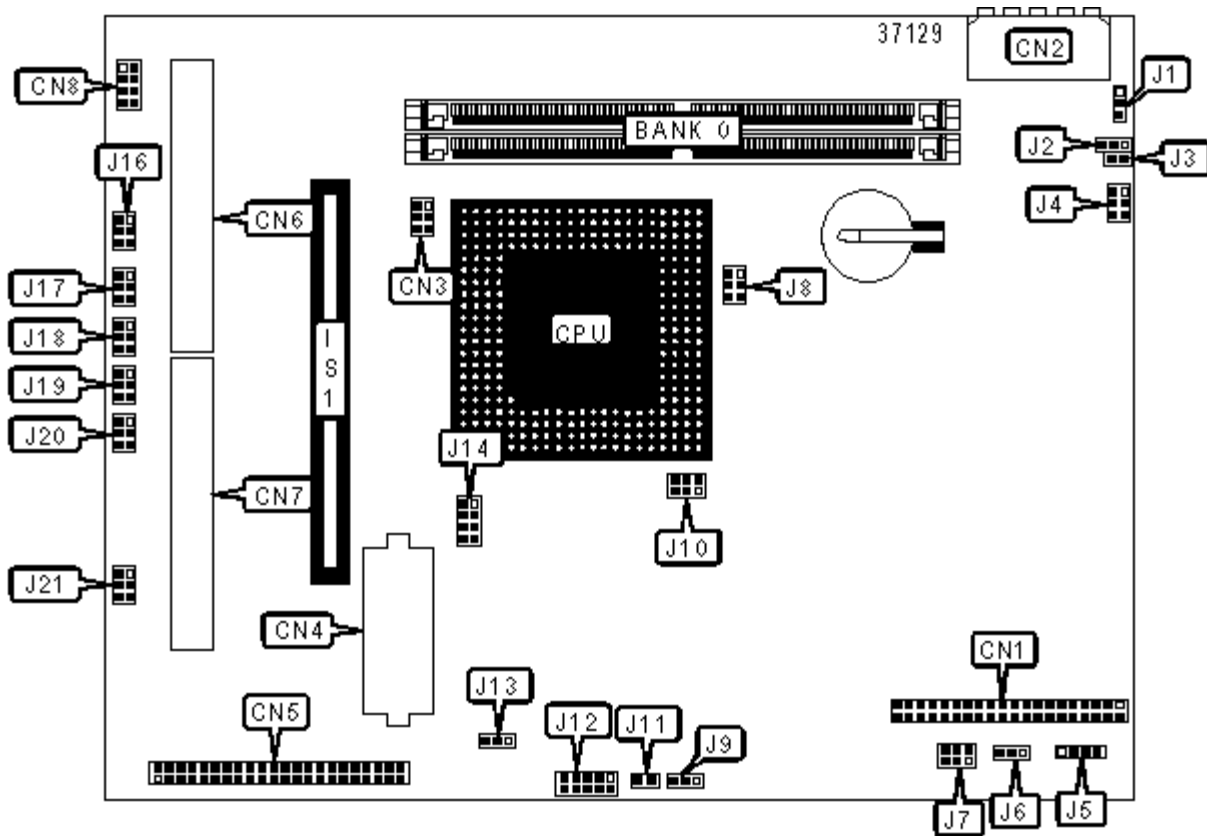


ADVANTECH CO., LTD.

PPC-102TB, PPC-102S, PPC-102M

Device Type	Mainboard
Processor	AM K5/AM K6/Pentium/Pentium MMX
Processor Speed	75/90/100/120/133/150/166/200/233MHz
Chip Set	SIS
Video Chip Set	Chips & Technology
Audio Chip Set	ESS
Maximum Onboard Memory	128MB (EDO supported)
Maximum Video Memory	2MB
Maximum Audio Memory	Unidentified
Maximum Resolution	640 x 480
Cache	256KB
BIOS	Award
Dimensions	342mm x 265mm
I/O Options	8-bit ISA slot, IDE interface, Floppy Drive/IDE interface, serial interfaces (4), Watchdog timer connector



CONNECTIONS			
Purpose	Location	Purpose	Location
IDE interface 1	CN1	Auxiliary power	CN8
Main power connector	CN2	8-bit ISA slot	IS1
Fan power	CN3	LCD back light connector	J1

Floppy drive/IDE interface 2 connector	CN4	VEE control	J5
LCD connector	CN5	Touchscreen power	J11
I/O connector (A)	CN6	Touchscreen serial interface	J12
I/O connector (B)	CN7		

USER CONFIGURABLE SETTINGS

Function		Label	Position
»	CMOS memory normal operation	J2	Pins 1 & 2 closed
	CMOS memory clear	J2	Pins 2 & 3 closed
»	Cache linear mode disabled	J3	Open
	Cache linear mode enabled	J3	Closed
»	Watchdog timer activates system reset upon CPU halt	J6	Pins 1 & 2 closed
	Watchdog timer generates interrupt on IRQ15 upon CPU halt	J6	Pins 2 & 3 closed
»	Pentium MMX selected	J10	Pins 1 & 3, 2 & 4 closed
	Pentium selected	J10	Pins 3 & 5, 4 & 6 closed
»	LCD power at 5V	J13	Pins 1 & 2 closed
	LCD power at 3.3V	J13	Pins 2 & 3 closed

SIMM CONFIGURATION

Size	Bank 0	Bank 1
8MB	(2) 1M x 36	None
16MB	(2) 2M x 36	None
16MB	(2) 1M x 36	(2) 1M x 36
24MB	(2) 2M x 36	(2) 1M x 36
32MB	(2) 4M x 36	None
32MB	(2) 2M x 36	(2) 2M x 36
40MB	(2) 4M x 36	(2) 1M x 36
48MB	(2) 4M x 36	(2) 2M x 36

64MB	(2) 8M x 36	None
64MB	(2) 4M x 36	(2) 4M x 36
72MB	(2) 8M x 36	(2) 1M x 36
80MB	(2) 8M x 36	(2) 2M x 36
96MB	(2) 8M x 36	(2) 4M x 36
128MB	(2) 8M x 36	(2) 8M x 36

CPU SPEED SELECTION (AM K5)

CPU speed	Clock speed	Multiplier	J8	J15
75MHz	50MHz	1.5x	Open	1 & 2, 5 & 6
90MHz	60MHz	1.5x	Open	1 & 2, 3 & 4
100MHz	66MHz	1.5x	Open	3 & 4
120MHz	66MHz	2x	5 & 6	3 & 4
133MHz	66MHz	2x	5 & 6	3 & 4
150MHz	60MHz	2.5x	3 & 4, 5 & 6	1 & 2, 3 & 4
166MHz	66MHz	2.5x	3 & 4, 5 & 6	3 & 4

Note: Pins designated should be in the closed position.

CPU SPEED SELECTION (AM K6)

CPU speed	Clock speed	Multiplier	J8	J15
166MHz	66MHz	2.5x	3 & 4, 5 & 6	3 & 4
200MHz	66MHz	3x	3 & 4	3 & 4
233MHz	66MHz	3.5x	Open	3 & 4

Note: Pins designated should be in the closed position.

CPU SPEED SELECTION (PENTIUM)

CPU speed	Clock speed	Multiplier	J8	J15
75MHz	50MHz	1.5x	Open	1 & 2, 5 & 6
90MHz	60MHz	1.5x	Open	1 & 2, 3 & 4

100MHz	66MHz	1.5x	Open	3 & 4
120MHz	66MHz	2x	5 & 6	3 & 4
133MHz	66MHz	2x	5 & 6	3 & 4
150MHz	60MHz	2.5x	3 & 4, 5 & 6	1 & 2, 3 & 4
166MHz	66MHz	2.5x	3 & 4, 5 & 6	3 & 4
180MHz	66MHz	3x	3 & 4	3 & 4
200MHz	66MHz	3x	3 & 4	3 & 4

Note: Pins designated should be in the closed position.

CPU SPEED SELECTION (PENTIUM MMX)

CPU speed	Clock speed	Multiplier	J8	J15
166MHz	66MHz	2.5x	3 & 4, 5 & 6	3 & 4
200MHz	66MHz	3x	3 & 4	3 & 4
233MHz	66MHz	3.5x	Open	3 & 4

Note: Pins designated should be in the closed position.

PCI SPEED SELECTION

PCI speed	J4
30MHz	Pins 1 & 2 closed
32MHz	Pins 3 & 4, 5 & 6 closed
33.3MHz	Pins 1 & 2, 3 & 4 closed
» 33.3MHz	Open

Note: Default PCI speed is used with system at 66MHz bus, instead of 50MHz.

DOC 2000 MEMORY ADDRESS SELECTION

Address	J7/Pins 1 & 2	J7/Pins 3 & 4	J7/Pins 5 & 6
Disable	Open	Open	Open
C8000	Closed	Closed	Closed

	CC00	Open	Closed	Closed
»	D000	Closed	Open	Closed
	D400	Open	Open	Closed
	D800	Closed	Closed	Open
	DC00	Open	Closed	Open
	E000	Closed	Open	Open

CPU VOLTAGE SELECTION (DUAL)

Voltage	J14/Pins 1 & 2	J14/Pins 3 & 4	J14/Pins 5 & 6	J14/Pins 7 & 8
2.1V	Open	Open	Open	Open
2.2V	Closed	Open	Open	Open
2.3V	Open	Closed	Open	Open
2.4V	Closed	Closed	Open	Open
2.5V	Open	Open	Closed	Open
2.6V	Closed	Open	Closed	Open
2.7V	Open	Closed	Closed	Open
» 2.8V	Closed	Closed	Closed	Open
2.9V	Open	Open	Open	Closed
3V	Closed	Open	Open	Closed
3.1V	Open	Closed	Open	Closed
3.2V	Closed	Closed	Open	Closed
3.4V	Closed	Open	Closed	Closed
3.6V	Closed	Closed	Closed	Closed

CPU VOLTAGE SELECTION (SINGLE)

Voltage	J14/Pins 1 & 2	J14/Pins 3 & 4	J14/Pins 5 & 6	J14/Pins 7 & 8
3.3V	Open	Open	Closed	Closed

	3.5V	Open	Closed	Closed	Closed
--	------	------	--------	--------	--------

COM3/COM4 IRQ SELECTION

Setting		J21
»	COM3 enabled, COM4 enabled	Pins 2 & 4, 3 & 5 closed
	COM3 disabled, COM4 disabled	Open
	COM3 enabled, COM4 disabled	Pins 2 & 4 closed
	COM3 disabled, COM4 enabled	Pins 3 & 5 closed

COM 3 VOLTAGE SELECTION

Setting		J17
»	RI	Pins 5 & 6 closed
	+5V	Pins 1 & 2 closed
	+12V	Pins 3 & 4 closed

COM 4 VOLTAGE SELECTION

Setting		J16
»	RI	Pins 5 & 6 closed
	+5V	Pins 1 & 2 closed
	+12V	Pins 3 & 4 closed

COM 2 PORT SELECTION

Setting	J18	J19	J20
»	RS-232	1 & 2	1 & 3, 2 & 4
	RS-422	3 & 4	1 & 3, 2 & 4
	RS-485	5 & 6	1 & 3, 2 & 4

Note: Pins designated should be in the closed position.