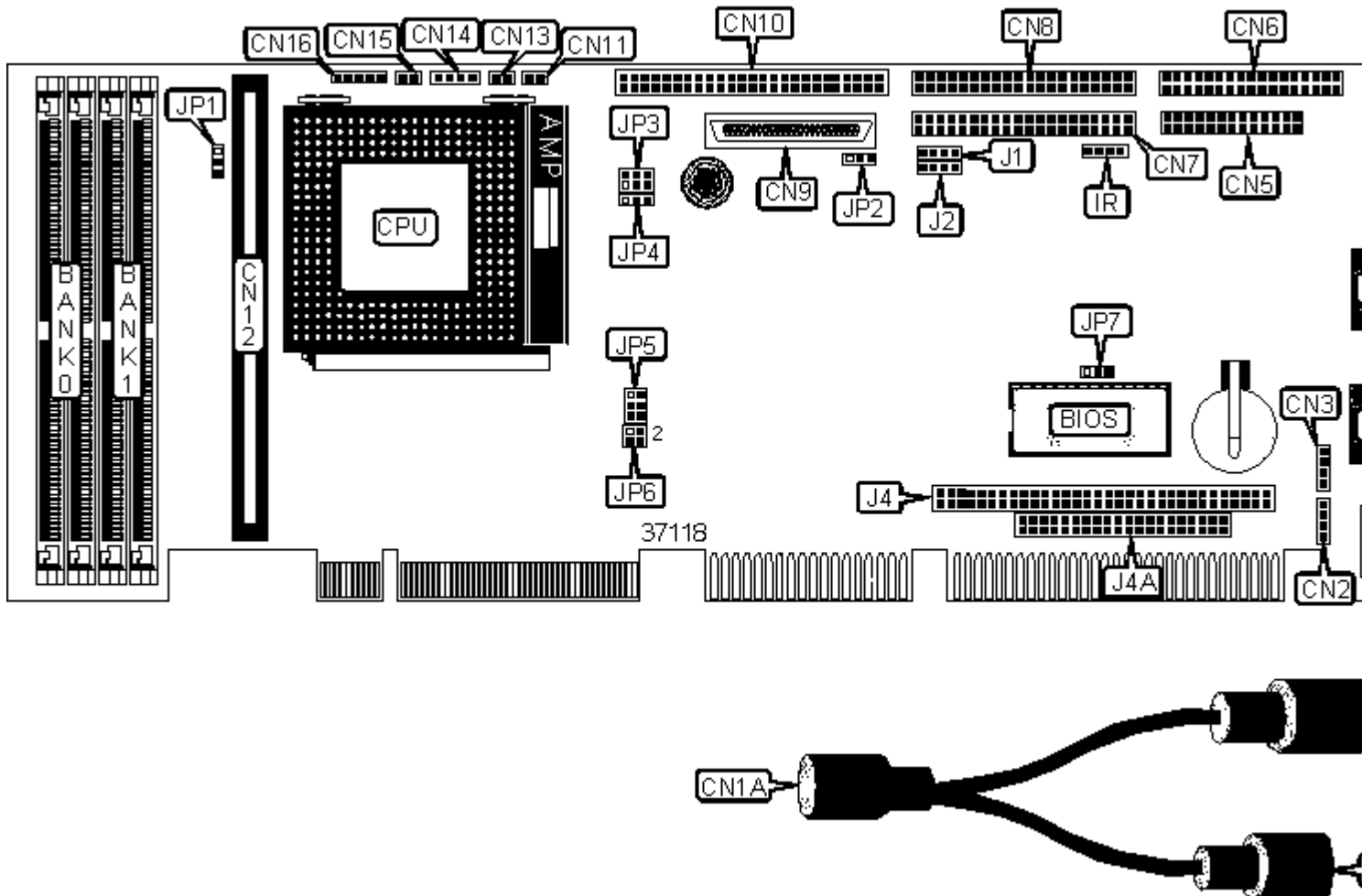


EMAC, INC.

SBC-570, SBC-570N

Device Type	Single Board Computer
Processor	CX 6X86/CX 6X86MX/AM K5/AM K6/Pentium/Pentium MMX
Processor Speed	75/90/100/120/133/150/166/180/200MHz
Chip Set	Intel Triton VX
Maximum Onboard Memory	128MB (EDO supported)
Cache	256/512KB
BIOS	AMI
Dimensions	338mm x 122mm
I/O Options	Cache slot, Floppy drive interface, IDE interfaces (2), IR connector, Parallel interface, PC/104 connectors (2), PS/2 mouse interface, AT keyboard interface, PS/2 mouse/AT keyboard port, SCSI-2 interface, Serial ports (2), USB interfaces (2), Wide Ultra SCSI interface (SBC-570)



CONNECTIONS

Purpose	Location	Purpose	Location
PS/2 mouse/AT keyboard port	CN1	SCSI LED	CN11
PS/2 mouse/AT keyboard port adapter connector	CN1A	IDE interface LED	CN13

AT keyboard connector	CN1B	Speaker	CN14
PS/2 mouse connector	CN1C	Reset switch	CN15
Keyboard interface	CN2	Power LED & keylock	CN16
Mouse interface	CN3	Serial port 1	COM1
Power connector	CN4	Serial port 2	COM2
Parallel interface	CN5	IR connector	IR
Floppy drive interface	CN6	USB interface 1	J1
IDE interface 2	CN7	USB interface 2	J2
IDE interface 1	CN8	8-bit PC 104 connector	J4
Wide Ultra SCSI interface (SBC-570 only)	CN9	16-bit PC 104 connector	J4A
SCSI-2 interface	CN10		

Note: The SBC-570N does not include a Wide Ultra SCSI interface.

USER CONFIGURABLE SETTINGS

Function		Label	Position
»	SCSI termination enabled	JP2	Pins 1 & 2 closed
	SCSI termination select by SCSI BIOS	JP2	Pins 2 & 3 closed
»	Single voltage CPU selected	JP3	Pins 1 & 2, 3 & 4, 5 & 6 closed
	Dual voltage CPU selected	JP3	Pins 1 & 2, 3 & 4, 5 & 6 open
»	Flash BIOS write protect disabled	JP7	Pins 1 & 2 closed
	Flash BIOS write protect enabled	JP7	Pins 2 & 3 closed

SIMM CONFIGURATION

Size	Bank 0	Bank 1
2MB	(2) 256K x 36	None
4MB	(2) 512K x 36	None
4MB	(2) 256K x 36	(2) 256K x 36
8MB	(2) 1M x 36	None

8MB	(2) 512K x 36	(2) 512K x 36
16MB	(2) 2M x 36	None
16MB	(2) 1M x 36	(2) 1M x 36
24MB	(2) 1M x 36	(2) 2M x 36
32MB	(2) 4M x 36	None
32MB	(2) 2M x 36	(2) 2M x 36
40MB	(2) 1M x 36	(2) 4M x 36
48MB	(2) 2M x 36	(2) 4M x 36
64MB	(2) 4M x 36	(2) 4M x 36
64MB	(2) 8M x 36	None
72MB	(2) 1M x 36	(2) 8M x 36
80MB	(2) 2M x 36	(2) 8M x 36
96MB	(2) 4M x 36	(2) 8M x 36
128MB	(2) 8M x 36	(2) 8M x 36

Note: Board accepts EDO memory.

L2 CACHE CONFIGURATION

Cache	CN12
0	No module installed
256KB	256KB module installed
512KB	512KB module installed

CPU BUS SPEED SELECTION

Bus Speed	JP6/Pins 1 & 2	JP6/Pins 3 & 4
50MHz	Closed	Closed
55MHz	Open	Open
60MHz	Closed	Open
» 66MHz	Open	Closed

CPU MULTIPLIER SELECTION

Multiplier		JP5
	1.5x	Pins 1 & 3, 2 & 4 closed
	2.0x	Pins 2 & 4, 3 & 5 closed
»	2.5x	Pins 3 & 5, 4 & 6 closed
	3.0x	Pins 1 & 3, 4 & 6 closed

CPU CORE VOLTAGE SELECTION

Voltage		JP4
	2.8V	Pins 1 & 2 closed
	2.9V	Pins 2 & 3 closed
»	3.2V	Open

CPU I/O VOLTAGE SELECTION

Voltage	JP1	JP4
	Pins 1 & 2 closed	Pins 2 & 3 closed
»	Pins 2 & 3 closed	Open
	Open	Open