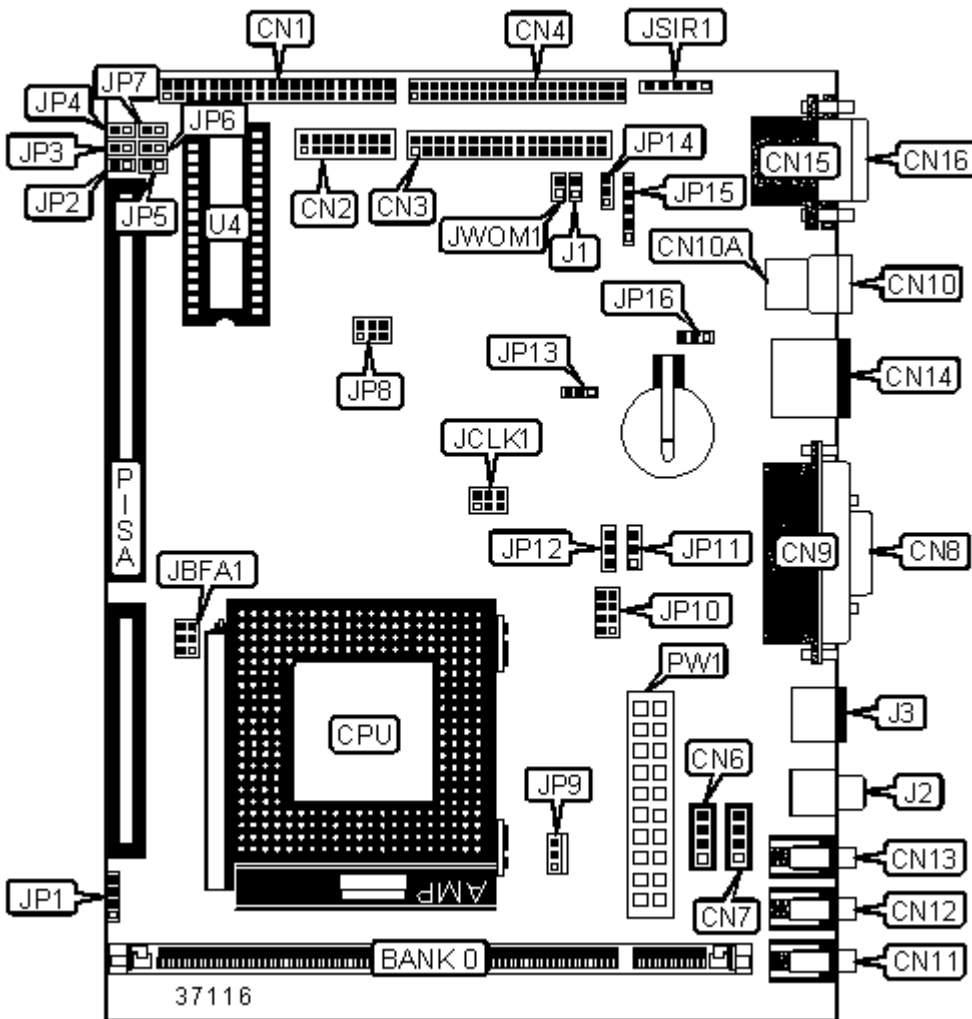


**EMAC, INC.**

PCM-4897

**Device Type** Single Board Computer  
**Processor** CX GXm  
**Processor Speed** 200/233/266/300MHz  
**Chip Set** Cyrix  
**Video Chip Set** Cyrix  
**Audio Chip Set** Cyrix  
**Maximum Onboard Memory** 128MB (SDRAM supported)  
**Maximum Video Memory** Unidentified  
**Cache** Unidentified  
**BIOS** Award  
**Dimensions** 203mm x 146mm  
**I/O Options**

ATX power connector, Audio in - CD-ROM, Audio in - voice modem, Composite video connector, External speaker connector, Flat panel connector, Floppy drive interface, Game interface, Green PC switch, IDE interface, IR connector, Line in, Line out, Microphone in, Parallel port, PISA slot, PS/2 mouse/AT keyboard port, S-Video connector, Serial ports (2), Solid-state disk socket, USB ports (2), VGA port, Wake-on-LAN connector, Wake-on-modem connector



**CONNECTIONS**

Purpose	Location	Purpose	Location
---------	----------	---------	----------

IDE interface	CN1	S-Video connector	J3
Game interface	CN2	Reset switch	JP2
Floppy drive interface	CN3	Power switch	JP3
Flat panel connector	CN4	Power LED	JP4
Audio in - CD-ROM	CN6	Green PC switch	JP5
Audio in - voice modem	CN7	Green PC LED	JP6
VGA port	CN8	IDE interface LED	JP7
Parallel port	CN9	CPU fan power	JP9
USB port 1	CN10	Unidentified	JP10
USB port 2	CN10A	Wake-on-LAN connector	JP11
Line out	CN11	Unidentified	JP12
Line in	CN12	Power LED & keylock	JP15
Microphone in	CN13	IR connector	JSIR1
PS/2 mouse/AT keyboard port	CN14	Wake-on-modem connector	JWOM1
Serial port 1	CN15	PISA slot	PISA
Serial port 2	CN16	ATX power connector	PW1
Flat panel power connector	J1	Solid-state disk socket (DOC)	U4
Composite video connector	J2		

### USER CONFIGURABLE SETTINGS

Function		Label	Position
»	Internal buzzer selected	JP1	Pins 1 & 2 closed
	External speaker connector selected	JP1	Open
»	CMOS memory normal operation	JP13	Pins 1 & 2 closed
	CMOS memory clear	JP13	Pins 2 & 3 closed
»	Flat panel power connector (J1) voltage select 12V	JP14	Pins 2 & 3 closed
	Flat panel power connector (J1) voltage select 5V	JP14	Pins 1 & 2 closed
»	Flat panel connector (CN4) voltage select 3.3V	JP16	Pins 2 & 3 closed

Flat panel connector (CN4) voltage select 5V	JP16	Pins 1 & 2 closed
Note: JP1 pins 1 - 4 is used as an external speaker connector when jumper is removed.		

DIMM CONFIGURATION	
Size	Bank 0
16MB	(1) 2M x 64
32MB	(1) 4M x 64
64MB	(1) 8M x 64
128MB	(1) 16M x 64
Note: Board supports SDRAM memory.	

CPU BUS SPEED SELECTION	
Bus Speed	JCLK1
30MHz	Pins 4 & 6 closed
» 33MHz	Pins 2 & 4 closed
Note: All pins should be open unless designated as closed.	

CPU MULTIPLIER SELECTION (200/233MHZ)			
Multiplier	JBFA1/Pins 1 & 2	JBFA1/Pins 3 & 4	JBFA1/Pins 5 & 6
4.0x	NA	On	On
6.0x	NA	On	Off
7.0x	NA	Off	On
8.0x	NA	Off	Off

CPU MULTIPLIER SELECTION (266/300MHZ)			
Multiplier	JBFA1/Pins 1 & 2	JBFA1/Pins 3 & 4	JBFA1/Pins 5 & 6
5.0x	On	Off	Off
» 6.0x	Off	On	Off
7.0x	Off	Off	On

	8.0x	On	On	On
	9.0x	On	Off	On
	10.0x	On	On	Off

**SOLID-STATE DISK (DOC) ADDRESS SELECTION**

Address		JP8/Pins 1 & 2	JP8/Pins 3 & 4	JP8/Pins 5 & 6
	CC00	Open	Open	Open
	D000	Open	Open	Closed
	D400	Open	Closed	Open
»	D800	Open	Closed	Closed
	DC00	Closed	Open	Open