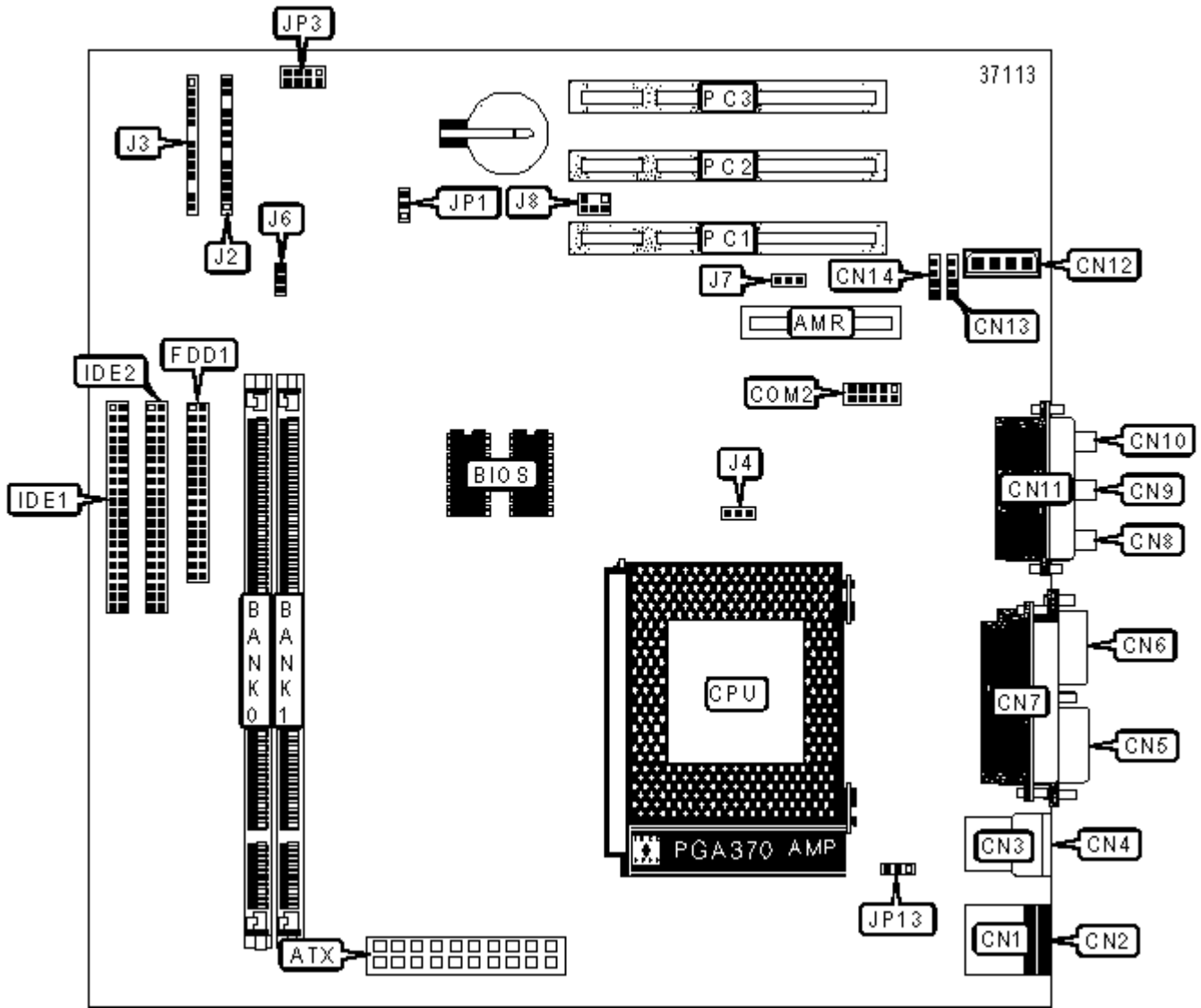


EPOX COMPUTER CO., LTD.

EP-3WXM, EP-3WXM2, EP-3WXM4

| | |
|-------------------------------|---|
| Device Type | Mainboard |
| Processor | Celeron |
| Processor Speed | 300/333/366/400/433/466MHz |
| Chip Set | Intel 810 |
| Maximum Onboard Memory | 512MB (EDO & SDRAM supported) |
| Cache | 128KB (located on the Celeron CPU) |
| BIOS | Award |
| Dimensions | Unidentified |
| I/O Options | 32-bit PCI slots (3), AMR slot, ATX power connector, Audio in - CD-ROM, Auxilliary audio in, Floppy drive interface, Game/MIDI port, IDE interfaces (2), IR connector, Line in, Line out, Microphone in, Modem connector, Parallel port, PS/2 keyboard port, PS/2 mouse port, Serial interface, Serial port, VGA port, USB ports (2), Wake-on-LAN connector |



CONNECTIONS

| Purpose | Location | Purpose | Location |
|---------|----------|---------|----------|
|---------|----------|---------|----------|

| | | | |
|-----------------------------|------|------------------------|-----------------|
| AMR slot | AMR | Serial interface | COM2 |
| ATX power connector | ATX | Floppy drive interface | FDD1 |
| PS/2 mouse port | CN1 | IDE interface 1 | IDE1 |
| PS/2 keyboard port | CN2 | IDE interface 2 | IDE2 |
| USB port 1 | CN3 | Power LED & keylock | J2/Pins 1 - 5 |
| USB port 0 | CN4 | Speaker | J2/Pins 7 - 10 |
| Serial port | CN5 | Reset switch | J2/Pins 12 & 13 |
| VGA port | CN6 | IR connector | J3/Pins 1 - 5 |
| Parallel port | CN7 | IDE interface LED | J3/Pins 7 & 8 |
| Line out | CN8 | Turbo LED | J3/Pins 9 & 10 |
| Line in | CN9 | Power switch | J3/Pins 12 & 13 |
| Microphone in | CN10 | CPU fan power | J4 |
| Game/MIDI port | CN11 | Chassis fan power | J6 |
| Audio in - CD-ROM connector | CN12 | Wake-on-LAN connector | J7 |
| Auxilliary audio in | CN13 | SB-Link connector | J8 |
| Modem connector | CN14 | 32-bit PCI slots | PC1 - PC5 |

USER CONFIGURABLE SETTINGS

| Function | | Label | Position |
|----------|------------------------------|-------|-------------------|
| » | CMOS memory normal operation | JP1 | Pins 1 & 2 closed |
| | CMOS memory clear | JP1 | Pins 2 & 3 closed |
| » | Power on keyboard disabled | JP13 | Pins 2 & 3 closed |
| | Power on keyboard enabled | JP13 | Pins 1 & 2 closed |

DIMM CONFIGURATION

| Size | Bank 0 | Bank 1 |
|------|-------------|-------------|
| 16MB | (1) 2M x 64 | None |
| 32MB | (1) 2M x 64 | (1) 2M x 64 |
| 32MB | (1) 4M x 64 | None |

| | | |
|-------|--------------|--------------|
| 48MB | (1) 4M x 64 | (1) 2M x 64 |
| 64MB | (1) 4M x 64 | (1) 4M x 64 |
| 64MB | (1) 8M x 64 | None |
| 80MB | (1) 8M x 64 | (1) 2M x 64 |
| 96MB | (1) 8M x 64 | (1) 4M x 64 |
| 128MB | (1) 8M x 64 | (1) 8M x 64 |
| 128MB | (1) 16M x 64 | None |
| 144MB | (1) 16M x 64 | (1) 2M x 64 |
| 160MB | (1) 16M x 64 | (1) 4M x 64 |
| 192MB | (1) 16M x 64 | (1) 8M x 64 |
| 256MB | (1) 16M x 64 | (1) 16M x 64 |
| 256MB | (1) 32M x 64 | None |
| 272MB | (1) 32M x 64 | (1) 2M x 64 |
| 288MB | (1) 32M x 64 | (1) 4M x 64 |
| 320MB | (1) 32M x 64 | (1) 8M x 64 |
| 384MB | (1) 32M x 64 | (1) 16M x 64 |
| 512MB | (1) 32M x 64 | (1) 32M x 64 |

Note: Board supports EDO & SDRAM memory.

CACHE CONFIGURATION

Note: 128KB cache is located on the Celeron 300A and greater version A CPUs.

CPU BUS SPEED SELECTION

| Speed | | JP3 |
|-------|----------|-------------------|
| » | Auto | Pins 3 & 4 closed |
| | 66MHz | Pins 5 & 6 closed |
| | 100MHz | Pins 1 & 2 closed |
| | Reserved | Pins 7 & 8 open |