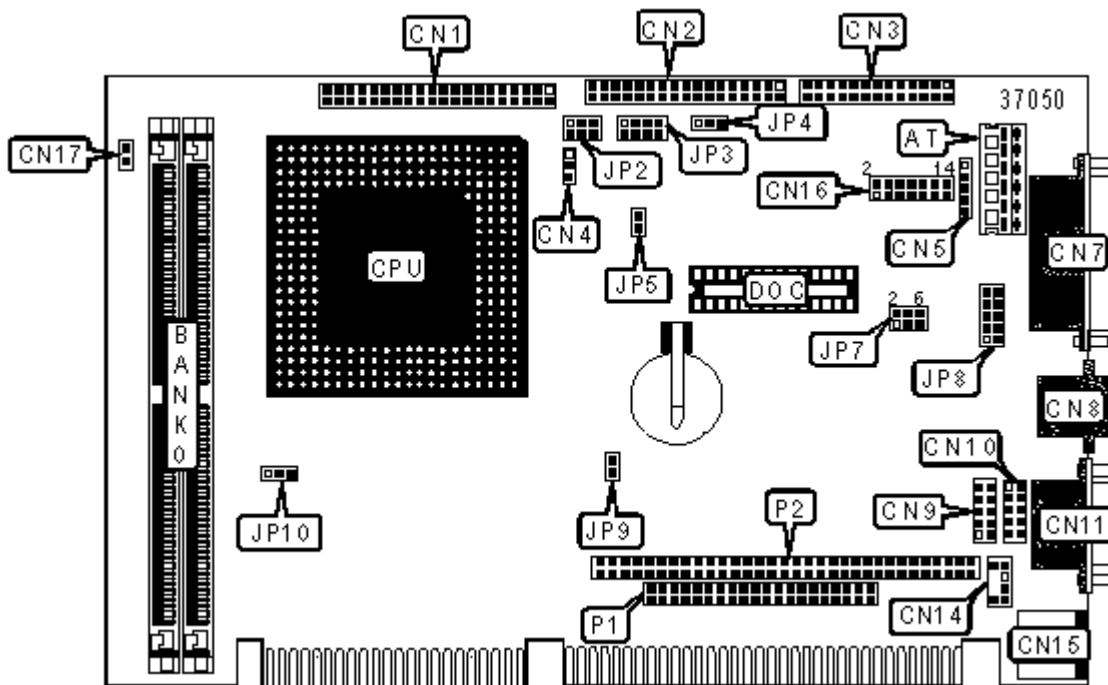


ADVANTECH CO., LTD.

PCA-6154

Device Type	Single Board Computer
Processor	CX 6X86L/CX 686MX/AM K5/AM K6/IDT C6/Pentium/Pentium MMX
Processor Speed	100/120/133/150/166/180/200/233/266/300MHz
Chip Set	SIS
Video Chip Set	SIS
Maximum Onboard Memory	128MB (EDO supported), Unified Memory Architecture (UMA)
Cache	512KB (located on the CPU)
BIOS	Award
Dimensions	185mm x 122mm
I/O Options	Ethernet connector, floppy drive interface, IDE interface, parallel port, PS/2 mouse/keyboard interface, serial interface, serial port, VGA port, USB interface, IR connector, AT power connector, PC/104 connectors (16-bit)
Data Bus	16-bit ISA



CONNECTIONS			
Purpose	Location	Purpose	Location
AT power connector	AT	Serial port	CN11
IDE interface	CN1	Keyboard interface	CN14
Floppy drive interface	CN2	PS/2 mouse/keyboard interface	CN15
Parallel port	CN3	Power interface LED	CN16/Pins 2, 4 & 6
CPU Fan power	CN4	Buzzer	CN16/Pins 5 & 7
IR connector	CN5	Reset switch	CN16/Pins 11 & 12
VGA port	CN7	IDE interface LED	CN17

CPU speed	Clock speed	Multiplier	JP2/Pins 1 & 2	JP2/Pins 3 & 4	JP2/Pins 5 & 6	JP9/Pins 1 & 2
166MHz	66MHz	2.5x	Closed	Closed	Open	Open
200MHz	66MHz	3x	Open	Closed	Open	Open
233MHz	66MHz	3.5x	Open	Open	Open	Open

CPU SPEED SELECTION (IDT C6)						
CPU speed	Clock speed	Multiplier	JP2/Pins 1 & 2	JP2/Pins 3 & 4	JP2/Pins 5 & 6	JP9/Pins 1 & 2
200MHz	66MHz	3x	Open	Closed	Open	Open

CPU SPEED SELECTION (PENTIUM)						
CPU speed	Clock speed	Multiplier	JP2/Pins 1 & 2	JP2/Pins 3 & 4	JP2/Pins 5 & 6	JP9/Pins 1 & 2
100MHz	66MHz	1.5x	Open	Open	Open	Open
133MHz	66MHz	2x	Closed	Open	Open	Open
166MHz	66MHz	2.5x	Closed	Closed	Open	Open
200MHz	66MHz	3x	Open	Closed	Open	Open

CPU SPEED SELECTION (PENTIUM MMX)						
CPU speed	Clock speed	Multiplier	JP2/Pins 1 & 2	JP2/Pins 3 & 4	JP2/Pins 5 & 6	JP9/Pins 1 & 2
166MHz	66MHz	2.5x	Closed	Closed	Open	Open
200MHz	66MHz	3x	Open	Closed	Open	Open
233MHz	66MHz	3.5x	Open	Open	Open	Open

DOC ADDRESS SELECTION	
Address	JP7
Off	Open
CC00 - CDFF	Pins 3 & 4, 5 & 6 closed
D000 - D1FF	Pins 1 & 2, 5 & 6 closed

D400 - D5FF	Pins 5 & 6 closed
D800 - D9FF	Pins 1 & 2, 3 & 4 closed
DC00 - DDFF	Pins 3 & 4 closed
E000 - E1FF	Pins 1 & 2 closed

SERIAL PROTOCOL SETTING		
Protocol		JP8/Pins 1 & 2
»	RS-232	Pins 1 & 2, 7 & 9, 11 & 12, 13 & 15, 17 & 18 closed
	RS-422	Pins 3 & 4, 7 & 8, 10 & 12, 13 & 14, 16 & 18 closed
	RS-485	Pins 5 & 6, 7 & 8, 10 & 12 closed

CPU VOLTAGE SELECTION					
Voltage		JP3/Pins 1 & 2	JP3/Pins 3 & 4	JP3/Pins 5 & 6	JP3/Pins 7 & 8
	1.9v	Open	Open	Open	Open
	2v	Closed	Open	Open	Open
	2.2v	Open	Closed	Open	Open
	2.3v	Closed	Closed	Open	Open
	2.4v	Open	Open	Closed	Open
	2.5v	Closed	Open	Closed	Open
	2.6v	Open	Closed	Closed	Open
	2.7v	Closed	Closed	Closed	Open
	2.8v	Open	Open	Open	Closed
	2.9v	Closed	Open	Open	Closed
	3v	Open	Closed	Open	Closed
	3.1v	Closed	Closed	Open	Closed
	3.2v	Open	Open	Closed	Closed
	3.27v	Closed	Open	Closed	Closed

»	3.3v	Open	Closed	Closed	Closed
	3.45v	Closed	Closed	Closed	Closed