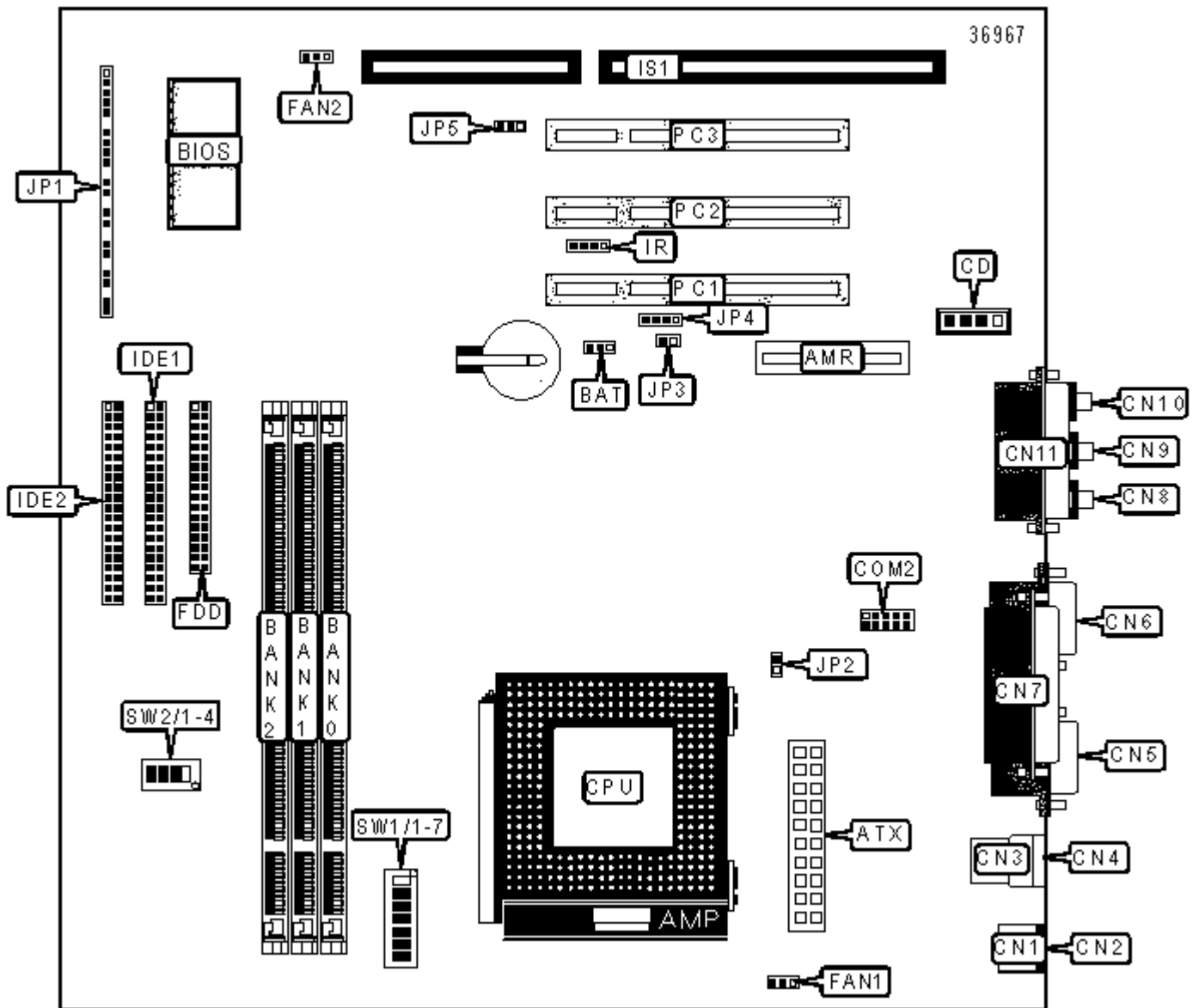


BOARDRUNNER

5MMVP4

Device Type	Mainboard
Processor	CX 6X86/CX 6X86L/CX 686MX/CX MII/AM K5/AM K6/AM K6-2/AM K6-III/Pentium/Pentium MMX/Rise MP6
Processor Speed	100/133/166/200/233/266/300/333/350/366/380/400MHz
Chip Set	VIA
Video Chip Set	Unidentified
Audio Chip Set	Unidentified
Maximum Onboard Memory	768MB (EDO & SDRAM supported)
Maximum Video Memory	8MB (Shared system memory)
Maximum Audio Memory	Unidentified
Cache	1024KB
BIOS	Award
Dimensions	220mm x 244mm
I/O Options	16-bit ISA slot, 32-bit PCI slots (3), CD-ROM interface, floppy drive interface, game/MIDI port, green PC connector, IDE interfaces (2), parallel port, PS/2 mouse port, PS/2 keyboard port, serial interface, serial port, VGA port, IR connector, USB ports (2), ATX power connector, Audio/Modem Riser slot, line in, line out, microphone in, audio in - CD-ROM, Wake-on-LAN connector



CONNECTIONS

Purpose	Location	Purpose	Location
Audio/Modem riser slot	AMR	CPU fan power 1	FAN1
ATX power connector	ATX	CPU fan power 2	FAN2
Audio in - CD-ROM	CD	Floppy drive interface	FDD
PS/2 mouse port	CN1	IDE interface 1	IDE1
PS/2 keyboard port	CN2	IDE interface 2	IDE2
USB port 1	CN3	IR connector	IR
USB port 2	CN4	16-bit ISA bus slot	IS1
Serial port 1	CN5	Power LED	JP1/Pins 1 - 3
VGA port	CN6	Speaker	JP1/Pins 7 - 10

Parallel port	CN7	Reset switch	JP1/Pins 12 & 13
Line out	CN8	IDE interface LED	JP1/Pins 15 & 16
Line in	CN9	Turbo LED	JP1/Pins 18 & 19
Microphone in	CN10	Green PC connector	JP1/Pins 21 & 22
Game/MIDI port	CN11	Soft off power supply	JP1/Pins 23 & 24
Serial port 2	COM2	32-bit PCI slots	PC1 - PC3

USER CONFIGURABLE SETTINGS

Function		Label	Position
»	CMOS memory normal operation	BAT	Pins 1 & 2 closed
	CMOS memory clear	BAT	Pins 2 & 3 closed
	Dual voltage select	JP2	Closed
	Single voltage select	JP2	Open
	PS/2 Mouse disabled	JP5	Pins 1 & 2 closed
	PS/2 Mouse enabled	JP5	Pins 2 & 3 closed

AUDIO SELECTION

Function	JP3	JP4
Onboard audio only enabled	Pins 1 & 2 closed	Pins 1 & 2 closed
Onboard audio and AMR slot enabled	Pins 1 & 2 closed	Pins 1 & 2, 3 & 4 closed
AMR slot only enabled	Open	Pins 3 & 4 closed

DIMM CONFIGURATION

Size	Bank 0	Bank 1	Bank 2
8MB	(1) 1M x 64	None	None
16MB	(1) 1M x 64	(1) 1M x 64	None
16MB	(1) 2M x 64	None	None
24MB	(1) 1M x 64	(1) 1M x 64	(1) 1M x 64

32MB	(1) 2M x 64	(1) 2M x 64	None
32MB	(1) 4M x 64	None	None
32MB	(1) 2M x 64	(1) 1M x 64	(1) 1M x 64
48MB	(1) 2M x 64	(1) 2M x 64	(1) 2M x 64
48MB	(1) 4M x 64	(1) 1M x 64	(1) 1M x 64
64MB	(1) 4M x 64	(1) 4M x 64	None
64MB	(1) 8M x 64	None	None
64MB	(1) 4M x 64	(1) 2M x 64	(1) 2M x 64
80MB	(1) 8M x 64	(1) 1M x 64	(1) 1M x 64
96MB	(1) 4M x 64	(1) 4M x 64	(1) 4M x 64
96MB	(1) 8M x 64	(1) 2M x 64	(1) 2M x 64
128MB	(1) 8M x 64	(1) 8M x 64	None
128MB	(1) 16M x 64	None	None
128MB	(1) 8M x 64	(1) 4M x 64	(1) 4M x 64
144MB	(1) 16M x 64	(1) 1M x 64	(1) 1M x 64
160MB	(1) 16M x 64	(1) 2M x 64	(1) 2M x 64
192MB	(1) 8M x 64	(1) 8M x 64	(1) 8M x 64
192MB	(1) 16M x 64	(1) 4M x 64	(1) 4M x 64
256MB	(1) 16M x 64	(1) 16M x 64	None
256MB	(1) 32M x 64	None	None
256MB	(1) 16M x 64	(1) 8M x 64	(1) 8M x 64
272MB	(1) 32M x 64	(1) 1M x 64	(1) 1M x 64
288MB	(1) 32M x 64	(1) 2M x 64	(1) 2M x 64
320MB	(1) 32M x 64	(1) 4M x 64	(1) 4M x 64
384MB	(1) 16M x 64	(1) 16M x 64	(1) 16M x 64
384MB	(1) 32M x 64	(1) 8M x 64	(1) 8M x 64
512MB	(1) 32M x 64	(1) 32M x 64	None

512MB	(1) 32M x 64	(1) 16M x 64	(1) 16M x 64
768MB	(1) 32M x 64	(1) 32M x 64	(1) 32M x 64

Note: Board supports SDRAM & EDO memory.

CPU SPEED SELECTION (CX 6X86)

CPU speed	Clock speed	Multiplier	SW1/5	SW1/6	SW1/7	SW2/1	SW2/2	SW2/3	SW2/4
166MHz	66MHz	2x	On	Off	Off	On	Off	Off	Off

CPU SPEED SELECTION (CX 6X86L)

CPU speed	Clock speed	Multiplier	SW1/5	SW1/6	SW1/7	SW2/1	SW2/2	SW2/3	SW2/4
166MHz	66MHz	2x	On	Off	Off	On	Off	Off	Off
200MHz	75MHz	2x	On	Off	Off	Off	Off	Off	On

CPU SPEED SELECTION (CX 6X86MX)

CPU speed	Clock speed	Multiplier	SW1/5	SW1/6	SW1/7	SW2/1	SW2/2	SW2/3	SW2/4
166MHz	66MHz	2x	On	Off	Off	On	Off	Off	Off
200MHz	75MHz	2x	On	Off	Off	Off	Off	Off	On
233MHz	75MHz	2.5x	On	On	Off	Off	Off	Off	On
266MHz	83MHz	2.5x	On	On	Off	On	Off	On	Off

CPU SPEED SELECTION (CX MII)

CPU speed	Clock speed	Multiplier	SW1/5	SW1/6	SW1/7	SW2/1	SW2/2	SW2/3	SW2/4
300MHz	66MHz	3.5x	Off	Off	Off	On	Off	Off	Off
333MHz	83MHz	3x	Off	On	Off	On	Off	On	Off
366MHz	100MHz	2.5x	On	On	Off	On	On	On	Off

CPU SPEED SELECTION (AM K5)

CPU speed	Clock speed	Multiplier	SW1/5	SW1/6	SW1/7	SW2/1	SW2/2	SW2/3	SW2/4
100MHz	66MHz	1.5x	Off	Off	Off	On	Off	Off	Off
133MHz	66MHz	1.5x	Off	Off	Off	On	Off	Off	Off
166MHz	66MHz	2.5x	On	On	Off	On	Off	Off	Off

CPU SPEED SELECTION (AM K6)

CPU speed	Clock speed	Multiplier	SW1/5	SW1/6	SW1/7	SW2/1	SW2/2	SW2/3	SW2/4
166MHz	66MHz	2.5x	On	On	Off	On	Off	Off	Off
200MHz	66MHz	3x	Off	On	Off	On	Off	Off	Off
233MHz	66MHz	3.5x	Off	Off	Off	On	Off	Off	Off
266MHz	66MHz	4x	On	Off	On	On	Off	Off	Off
300MHz	66MHz	4.5x	On	On	On	On	Off	Off	Off

CPU SPEED SELECTION (AM K6-2)

CPU speed	Clock speed	Multiplier	SW1/5	SW1/6	SW1/7	SW2/1	SW2/2	SW2/3	SW2/4
250MHz	100MHz	2.5x	On	On	Off	On	On	On	Off
266MHz	66MHz	4x	On	Off	On	On	Off	Off	Off
300MHz	66MHz	4.5x	On	On	On	On	Off	Off	Off
300MHz	100MHz	3x	Off	On	Off	On	On	On	Off
333MHz	66MHz	5x	Off	On	On	On	Off	Off	Off
333MHz	95MHz	3.5x	Off	Off	Off	Off	On	On	Off
350MHz	100MHz	3.5x	Off	Off	Off	On	On	On	Off
366MHz	66MHz	5.5x	Off	Off	On	On	Off	Off	Off
380MHz	95MHz	4x	On	Off	On	Off	On	On	Off
400MHz	100MHz	4x	On	Off	On	On	On	On	Off

CPU SPEED SELECTION (AM K6-III)

CPU speed	Clock speed	Multiplier	SW1/5	SW1/6	SW1/7	SW2/1	SW2/2	SW2/3	SW2/4
400MHz	100MHz	4x	On	Off	On	On	On	On	Off

CPU SPEED SELECTION (PENTIUM)

CPU speed	Clock speed	Multiplier	SW1/5	SW1/6	SW1/7	SW2/1	SW2/2	SW2/3	SW2/4
100MHz	66MHz	1.5x	Off	Off	Off	On	Off	Off	Off
133MHz	66MHz	2x	On	Off	Off	On	Off	Off	Off
166MHz	66MHz	2.5x	On	On	Off	On	Off	Off	Off
200MHz	66MHz	3x	Off	On	Off	On	Off	Off	Off

CPU SPEED SELECTION (PENTIUM MMX)

CPU speed	Clock speed	Multiplier	SW1/5	SW1/6	SW1/7	SW2/1	SW2/2	SW2/3	SW2/4
166MHz	66MHz	2.5x	On	On	Off	On	Off	Off	Off
200MHz	66MHz	3x	Off	On	Off	On	Off	Off	Off
233MHz	66MHz	3.5x	Off	Off	Off	On	Off	Off	Off

CPU SPEED SELECTION (RISE MP6)

CPU speed	Clock speed	Multiplier	SW1/5	SW1/6	SW1/7	SW2/1	SW2/2	SW2/3	SW2/4
266MHz	100MHz	2x	On	Off	Off	On	On	On	Off
366MHz	100MHz	2.5x	On	On	Off	On	On	On	Off

CPU VOLTAGE SELECTION (SINGLE)

Voltage	SW1/1	SW1/2	SW1/3	SW1/4
3.3v	On	Off	On	On
3.5v	On	On	On	On

CPU VOLTAGE SELECTION (DUAL)

Voltage	SW1/1	SW1/2	SW1/3	SW1/4
2.2v	Off	On	Off	Off
2.4v	Off	Off	On	Off
2.7v	On	On	On	Off
2.8v	Off	Off	Off	On
2.9v	On	Off	Off	On
3.2v	Off	Off	On	On