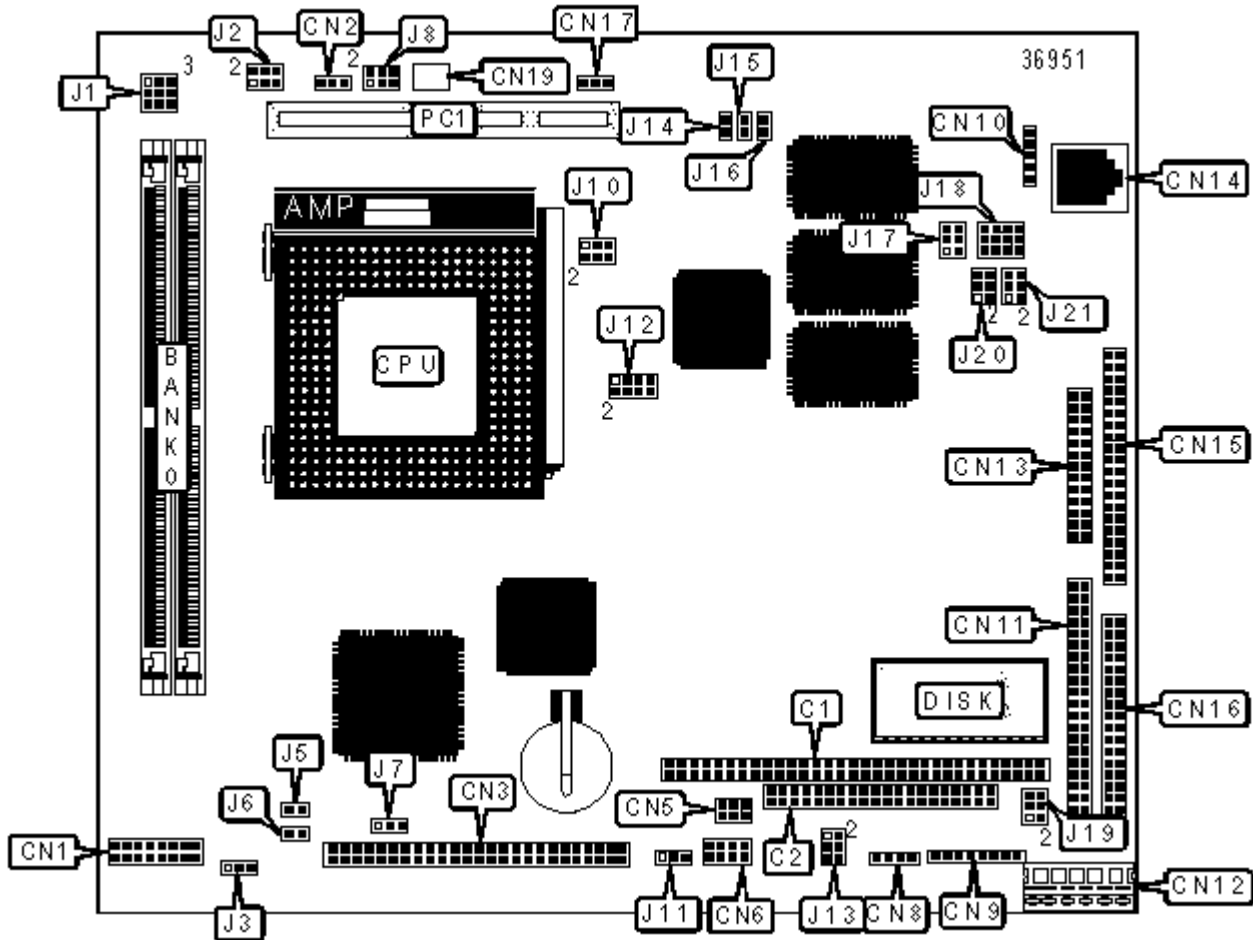


# AAEON TECHNOLOGY, INC.

PCM-5892

|                               |  |
|-------------------------------|--|
| <b>Device Type</b>            | Single board computer  |
| <b>Processor</b>              | CX 6X86MX/IBM 6X86MX/SGS 6X86/AM K5/AM K6/IDT C6/Pentium/Pentium MMX   |
| <b>Processor Speed</b>        | 75/90/100/120/133/150/166/180/200/233MHz   |
| <b>Chip Set</b>               | SIS  |
| <b>Video Chip Set</b>         | Chips and Technology   |
| <b>Maximum Onboard Memory</b> | 128MB (EDO supported)  |
| <b>Maximum Video Memory</b>   | 2MB  |
| <b>Cache</b>                  | 512KB  |
| <b>BIOS</b>                   | Award  |
| <b>Dimensions</b>             | 203mm x 146mm  |
| <b>I/O Options</b>            | 32-bit PCI slot, Ethernet 10/100BaseT connector, floppy drive interface, IDE interface, parallel port, PS/2 mouse interface, serial ports (2), VGA port, IR connector, USB connector |
| <b>Data Bus</b>               | PC/104 (16-bit)  |



## CONNECTIONS

| Purpose                   | Location | Purpose       | Location |
|---------------------------|----------|---------------|----------|
| PC/104 connector (8-bit)  | C1       | 5v power      | CN12     |
| PC/104 connector (16-bit) | C2       | Parallel port | CN13     |

|                               |      |                                |      |
|-------------------------------|------|--------------------------------|------|
| VGA port                      | CN1  | Ethernet 10/100BaseT connector | CN14 |
| Chassis fan power             | CN2  | Serial port                    | CN15 |
| Flat panel connector          | CN3  | Floppy drive interface         | CN16 |
| USB interface                 | CN5  | Chassis fan power              | CN17 |
| Front panel connector         | CN6  | Auxilliary power               | CN19 |
| -5v power                     | CN8  | TX LED                         | J14  |
| PS/2 mouse/keyboard interface | CN9  | RX LED                         | J15  |
| IR connector                  | CN10 | LINK LED                       | J16  |
| IDE interface                 | CN11 | 32-bit PCI slots               | PC1  |

### USER CONFIGURABLE SETTINGS

| Function |                                   | Label | Position                        |
|----------|-----------------------------------|-------|---------------------------------|
| »        | Factory configured - do not alter | J1    | Pins 2 & 3, 5 & 6, 7 & 8 closed |
| »        | CMOS memory normal operation      | J7    | Pins 1 & 2 closed               |
|          | CMOS memory clear                 | J7    | Pins 2 & 3 closed               |

### SIMM CONFIGURATION

| Size  | Bank 0       |
|-------|--------------|
| 8MB   | (2) 1M x 36  |
| 16MB  | (2) 2M x 36  |
| 32MB  | (2) 4M x 36  |
| 64MB  | (2) 8M x 36  |
| 128MB | (2) 16M x 36 |

### VIDEO MEMORY CONFIGURATION

**Note:** The settings for the internal VGA are factory configured.

### CPU SPEED SELECTION (CX 6X86MX)

| CPU speed | Clock speed | Multiplier | J2 | J8 |
|-----------|-------------|------------|----|----|
|-----------|-------------|------------|----|----|

|        |       |      |              |              |
|--------|-------|------|--------------|--------------|
| 166MHz | 66MHz | 2x   | Open         | 1 & 2        |
| 166MHz | 60MHz | 2.5x | 1 & 2        | 1 & 2, 3 & 4 |
| 200MHz | 75MHz | 2x   | 3 & 4, 5 & 6 | 1 & 2        |
| 200MHz | 66MHz | 2.5x | Open         | 1 & 2, 3 & 4 |
| 233MHz | 75MHz | 2.5x | 3 & 4, 5 & 6 | 1 & 2, 3 & 4 |
| 233MHz | 75MHz | 3x   | 3 & 4, 5 & 6 | 3 & 4        |
| 266MHz | 66MHz | 3x   | Open         | 3 & 4        |
| 266MHz | 66MHz | 3.5x | Open         | Open         |

**Note:** Pins designated should be in the closed position.

#### CPU SPEED SELECTION (IBM 6X86MX)

| CPU speed | Clock speed | Multiplier | J2           | J8           |
|-----------|-------------|------------|--------------|--------------|
| 166MHz    | 66MHz       | 2x         | Open         | 1 & 2        |
| 166MHz    | 60MHz       | 2.5x       | 1 & 2        | 1 & 2, 3 & 4 |
| 200MHz    | 75MHz       | 2x         | 3 & 4, 5 & 6 | 1 & 2        |
| 200MHz    | 66MHz       | 2.5x       | Open         | 1 & 2, 3 & 4 |
| 233MHz    | 75MHz       | 2.5x       | 3 & 4, 5 & 6 | 1 & 2, 3 & 4 |
| 233MHz    | 75MHz       | 3x         | 3 & 4, 5 & 6 | 3 & 4        |
| 266MHz    | 66MHz       | 3x         | Open         | 3 & 4        |
| 266MHz    | 66MHz       | 3.5x       | Open         | Open         |

**Note:** Pins designated should be in the closed position.

#### CPU SPEED SELECTION (AM K5)

| CPU speed | Clock speed | Multiplier | J2    | J8   |
|-----------|-------------|------------|-------|------|
| 75MHz     | 50MHz       | 1.5x       | 3 & 4 | Open |
| 90MHz     | 60MHz       | 1.5x       | 1 & 2 | Open |
| 100MHz    | 66MHz       | 1.5x       | Open  | Open |
| 120MHz    | 60MHz       | 2x         | 1 & 2 | Open |
| 133MHz    | 66MHz       | 2x         | Open  | Open |

**Note:** Pins designated should be in the closed position.

#### CPU SPEED SELECTION (AM K6)

| CPU speed | Clock speed | Multiplier | J2   | J8                  |
|-----------|-------------|------------|------|---------------------|
| 166MHz    | 66MHz       | 2.5x       | Open | 1 & 2, 3 & 4        |
| 200MHz    | 66MHz       | 3x         | Open | 3 & 4               |
| 233MHz    | 66MHz       | 3.5x       | Open | Open                |
| 266MHz    | 66MHz       | 4x         | Open | 1 & 2, 5 & 6        |
| 300MHz    | 66MHz       | 4.5x       | Open | 1 & 2, 3 & 4, 5 & 6 |

**Note:** Pins designated should be in the closed position.

#### CPU SPEED SELECTION (INTEL)

| CPU speed | Clock speed | Multiplier | J2    | J8           |
|-----------|-------------|------------|-------|--------------|
| 75MHz     | 50MHz       | 1.5x       | 5 & 6 | Open         |
| 90MHz     | 60MHz       | 1.5x       | 1 & 2 | Open         |
| 100MHz    | 66MHz       | 1.5x       | Open  | Open         |
| 120MHz    | 60MHz       | 2x         | 1 & 2 | 1 & 2        |
| 133MHz    | 66MHz       | 2x         | Open  | 1 & 2        |
| 150MHz    | 60MHz       | 2.5x       | 1 & 2 | 1 & 2, 3 & 4 |
| 166MHz    | 66MHz       | 2.5x       | Open  | 1 & 2, 3 & 4 |
| 200MHz    | 66MHz       | 3x         | Open  | 3 & 4        |

**Note:** Pins designated should be in the closed position.

#### CPU SPEED SELECTION (INTEL MMX)

| CPU speed | Clock speed | Multiplier | J2    | J8           |
|-----------|-------------|------------|-------|--------------|
| 150MHz    | 60MHz       | 2.5x       | 1 & 2 | 1 & 2, 3 & 4 |
| 166MHz    | 66MHz       | 2.5x       | Open  | 1 & 2, 3 & 4 |
| 200MHz    | 66MHz       | 3x         | Open  | 3 & 4        |
| 233MHz    | 66MHz       | 3.5x       | Open  | Open         |

**Note:** Pins designated should be in the closed position.

### CPU TYPE SELECTION

| Type |                | J10                      |
|------|----------------|--------------------------|
| »    | Dual voltage   | Pins 3 & 5, 4 & 6 closed |
|      | Single voltage | Pins 1 & 3, 2 & 4 closed |

### CPU VOLTAGE SELECTION

| Voltage |      | J12                                    |
|---------|------|--|
|         | 2.1v | Open                                   |
|         | 2.2v | Pins 1 & 2 closed                      |
|         | 2.3v | Pins 3 & 4 closed                      |
|         | 2.4v | Pins 1 & 2, 3 & 4 closed               |
|         | 2.5v | Pins 5 & 6 closed                      |
|         | 2.6v | Pins 1 & 2, 5 & 6 closed               |
|         | 2.7v | Pins 3 & 4, 5 & 6 closed               |
| »       | 2.8v | Pins 1 & 2, 3 & 4, 5 & 6 closed        |
|         | 2.9v | Pins 7 & 8 closed                      |
|         | 3.0v | Pins 1 & 2, 7 & 8 closed               |
|         | 3.1v | Pins 3 & 4, 7 & 8 closed               |
|         | 3.2v | Pins 1 & 2, 3 & 4, 7 & 8 closed        |
|         | 3.3v | Pins 5 & 6, 7 & 8 closed               |
|         | 3.4v | Pins 1 & 2, 5 & 6, 7 & 8 closed        |
|         | 3.5v | Pins 3 & 4, 5 & 6, 7 & 8 closed        |
|         | 3.6v | Pins 1 & 2, 3 & 4, 5 & 6, 7 & 8 closed |

### SERIAL PORT 3 & 4 RI SELECTION

| Setting |     | J20               | J21               |
|---------|-----|-------------------|-------------------|
| »       | RI  | Pins 5 & 6 closed | Pins 5 & 6 closed |
|         | 5v  | Pins 3 & 4 closed | Pins 3 & 4 closed |
|         | 12v | Pins 1 & 2 closed | Pins 1 & 2 closed |

| SERIAL PORT INTERRUPT SELECTION |      |       |                          |
|---------------------------------|------|-------|--------------------------|
| COM                             |      | IRQ   | J19                      |
| »                               | COM3 | IRQ5  | Pins 2 & 4, 3 & 5 closed |
|                                 | COM4 | IRQ10 | Pins 2 & 4, 3 & 5 closed |
|                                 | COM3 | IRQ10 | Pins 1 & 3, 4 & 6 closed |
|                                 | COM4 | IRQ5  | Pins 1 & 3, 4 & 6 closed |

| SERIAL PORT SELECTION |        |                   |  |
|-----------------------|--------|-------------------|--|
| Type                  |        | J17               | J18                                      |
| »                     | RS-232 | Pins 1 & 2 closed | Pins 1 & 2, 4 & 5, 7 & 8, 10 & 11 closed |
|                       | RS-422 | Pins 3 & 4 closed | Pins 2 & 3, 5 & 6, 8 & 9, 11 & 12 closed |
|                       | RS-485 | Pins 5 & 6 closed | Pins 2 & 3, 5 & 6, 8 & 9, 11 & 12 closed |

| LCD VOLTAGE SELECTION |      |                   |                   |
|-----------------------|------|-------------------|-------------------|
| Voltage               |      | J3                | J11               |
| »                     | 5v   | Pins 1 & 2 closed | Pins 1 & 2 closed |
|                       | 3.3v | Pins 2 & 3 closed | Pins 2 & 3 closed |

| LCD SIGNAL SELECT |            |        |        |
|-------------------|------------|--------|--------|
| Signal            |            | J5     | J6     |
|                   | SHF clock  | Closed | Open   |
|                   | ASHF clock | Open   | Closed |

**DISK ADDRESS SELECTION**

| <b>Address</b> |          | <b>J13</b>                      |
|----------------|----------|---------------------------------|
| »              | DC00     | Pins 5 & 6 closed               |
|                | D800     | Pins 1 & 2, 3 & 4 closed        |
|                | D400     | Pins 3 & 4 closed               |
|                | D000     | Pins 1 & 2 closed               |
|                | CC00     | Open                            |
|                | Disabled | Pins 1 & 2, 3 & 4, 5 & 6 closed |