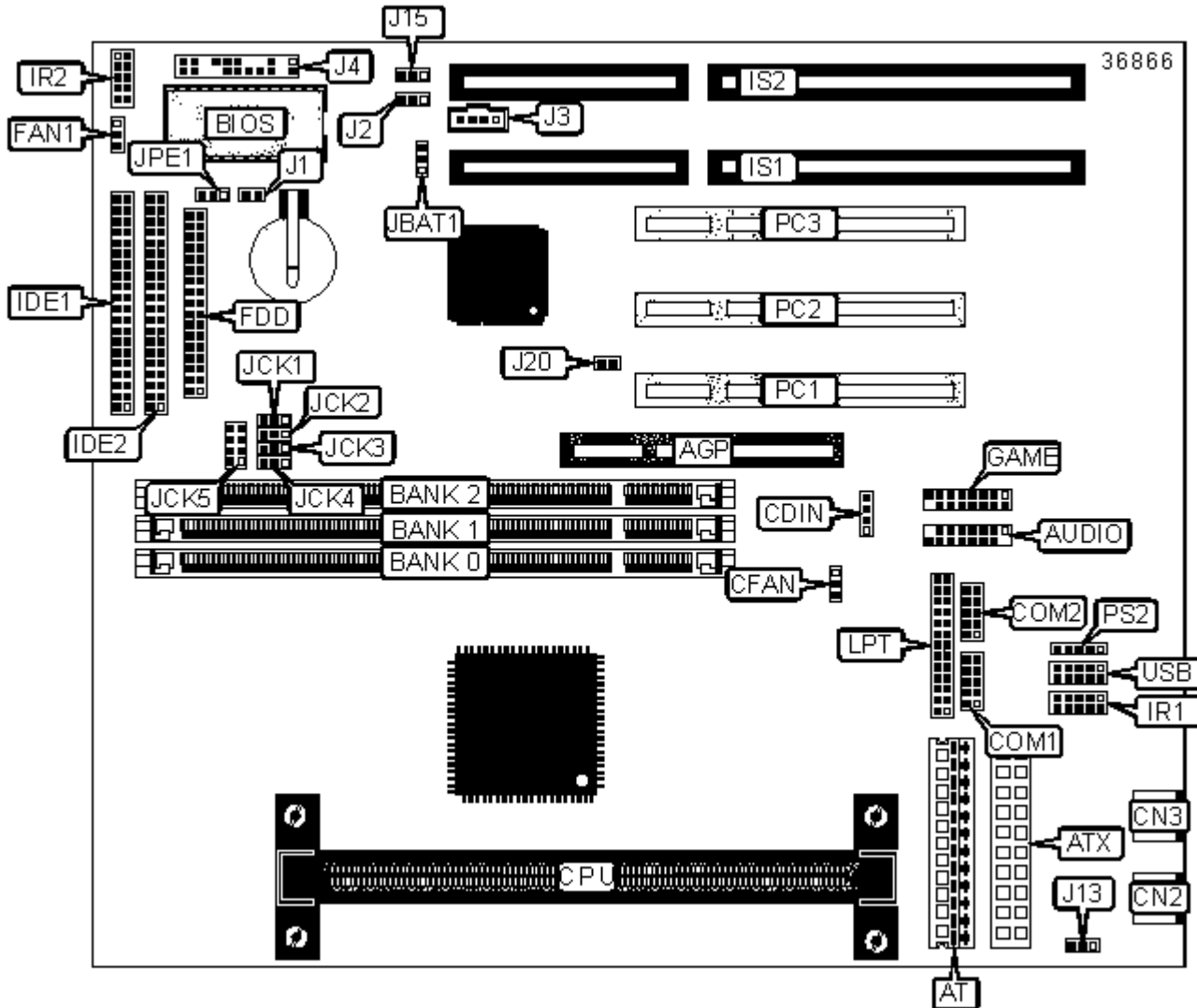


FIRST INTERNATIONAL COMPUTER, INC.

KA-6100

Device Type	Mainboard
Processor	Pentium II/Celeron
Processor Speed	233/266/300/333/350/366/400/450MHz
Chip Set	VIA
Audio Chip Set	Yamaha
Maximum Onboard Memory	384MB (SDRAM supported)
Maximum Audio Memory	Unidentified
Cache	0/128/256/512KB (located on the CPU)
BIOS	Unidentified
Dimensions	218mm x 230mm
I/O Options	32-bit PCI slots (3), 16-bit ISA slots (2), floppy drive interface, game interface, IDE interfaces (2), parallel interface, PS/2 keyboard port, PS/2 mouse port, PS/2 mouse interface, serial interfaces (2), IR connector (2), USB interface, ATX power connector, AGP slot, AT power connector, audio in - CD-ROM, Audio connector, Front panel connector



CONNECTIONS

Purpose	Location	Purpose	Location
---------	----------	---------	----------

AGP slot	AGP	Game interface	GAME
AT power connector	AT	IDE interface 1	IDE1
ATX power connector	ATX	IDE interface 2	IDE2
Audio connector	AUDIO	IR connector 1	IR1
Audio in - CD-ROM	CDIN	IR connector 2	IR2
CPU fan power	CFAN	16-bit ISA slots	IS1 - IS2
PS/2 keyboard port	CN2	Unidentified	J3
PS/2 mouse port	CN3	Front panel connector	J4
Serial port 1	COM1	Parallel interface	LPT
Serial port 2	COM2	32-bit PCI slots	PC1 - PC3
Chassis fan power	FAN1	PS/2 mouse interface	PS2
Floppy drive interface	FDD	USB interface	USB

USER CONFIGURABLE SETTINGS

Function		Label	Position
»	CMOS memory normal operation	JBAT1	Pins 1 & 2 closed
	CMOS memory clear	JBAT1	Pins 2 & 3 closed
	2MB Flash ROM selected	JPE1	Pins 1 & 2 closed
	1MB Flash ROM selected	JPE1	Pins 2 & 3 closed
	ATX power selected	J13	Pins 1 & 2 closed
	AT power selected	J13	Pins 2 & 3 closed
	Flash BIOS voltage select 12v	J15	Pins 2 & 3 closed
	Flash BIOS voltage select 5v	J15	Pins 1 & 2 closed
	Password normal operation	J20	Open
	Password clear	J20	Closed

DIMM CONFIGURATION

Size	Bank 0	Bank 1	Bank 2
------	--------	--------	--------

8MB	(1) 1M x 64	None	None
16MB	(1) 1M x 64	(1) 1M x 64	None
16MB	(1) 2M x 64	None	None
24MB	(1) 1M x 64	(1) 1M x 64	(1) 1M x 64
32MB	(1) 2M x 64	(1) 2M x 64	None
32MB	(1) 4M x 64	None	None
32MB	(1) 2M x 64	(1) 1M x 64	(1) 1M x 64
48MB	(1) 2M x 64	(1) 2M x 64	(1) 2M x 64
48MB	(1) 4M x 64	(1) 1M x 64	(1) 1M x 64
64MB	(1) 4M x 64	(1) 4M x 64	None
64MB	(1) 8M x 64	None	None
64MB	(1) 4M x 64	(1) 2M x 64	(1) 2M x 64
80MB	(1) 8M x 64	(1) 1M x 64	(1) 1M x 64
96MB	(1) 4M x 64	(1) 4M x 64	(1) 4M x 64
96MB	(1) 8M x 64	(1) 2M x 64	(1) 2M x 64
128MB	(1) 8M x 64	(1) 8M x 64	None
128MB	(1) 16M x 64	None	None
128MB	(1) 8M x 64	(1) 4M x 64	(1) 4M x 64
144MB	(1) 16M x 64	(1) 1M x 64	(1) 1M x 64
160MB	(1) 16M x 64	(1) 2M x 64	(1) 2M x 64
192MB	(1) 8M x 64	(1) 8M x 64	(1) 8M x 64
192MB	(1) 16M x 64	(1) 4M x 64	(1) 4M x 64
256MB	(1) 16M x 64	(1) 16M x 64	None
256MB	(1) 32M x 64	None	None
256MB	(1) 16M x 64	(1) 8M x 64	(1) 8M x 64
272MB	(1) 32M x 64	(1) 1M x 64	(1) 1M x 64
288MB	(1) 32M x 64	(1) 2M x 64	(1) 2M x 64
320MB	(1) 32M x 64	(1) 4M x 64	(1) 4M x 64
384MB	(1) 16M x 64	(1) 16M x 64	(1) 16M x 64

384MB	(1) 32M x 64	(1) 8M x 64	(1) 8M x 64
512MB	(1) 32M x 64	(1) 32M x 64	None
512MB	(1) 32M x 64	(1) 16M x 64	(1) 16M x 64
768MB	(1) 32M x 64	(1) 32M x 64	(1) 32M x 64

Note: Board supports EDO & SDRAM memory.

CACHE CONFIGURATION

Note: 256KB/512KB cache is located on the Pentium II CPUs. 128KB cache is located on the Celeron 300A and greater CPUs.

CPU SPEED SELECTION (PENTIUM)

CPU Clock speed	SDRAM Clock Speed	JCK1	JCK2	JCK3	JCK4
103MHz	66MHz	2 & 3	1 & 2	1 & 2	1 & 2
103MHz	103MHz	2 & 3	1 & 2	1 & 2	2 & 3
100MHz	66MHz	2 & 3	1 & 2	2 & 3	1 & 2
100MHz	100MHz	2 & 3	1 & 2	2 & 3	2 & 3
75MHz	75MHz	1 & 2	2 & 3	2 & 3	N/A
66MHz	66MHz	2 & 3	2 & 3	2 & 3	N/A

Note: Pins designated should be in the closed position

CPU MULTIPLIER SELECTION

Multiplier	JCK5/Pins 1 & 2	JCK5/Pins 3 & 4	JCK5/Pins 5 & 6	JCK5/Pins 7 & 8
3x	Closed	Open	Closed	Closed
3.5x	Closed	Open	Open	Closed
4x	Open	Closed	Closed	Closed
4.5x	Open	Closed	Open	Closed
5x	Open	Open	Closed	Closed
5.5x	Open	Open	Open	Closed