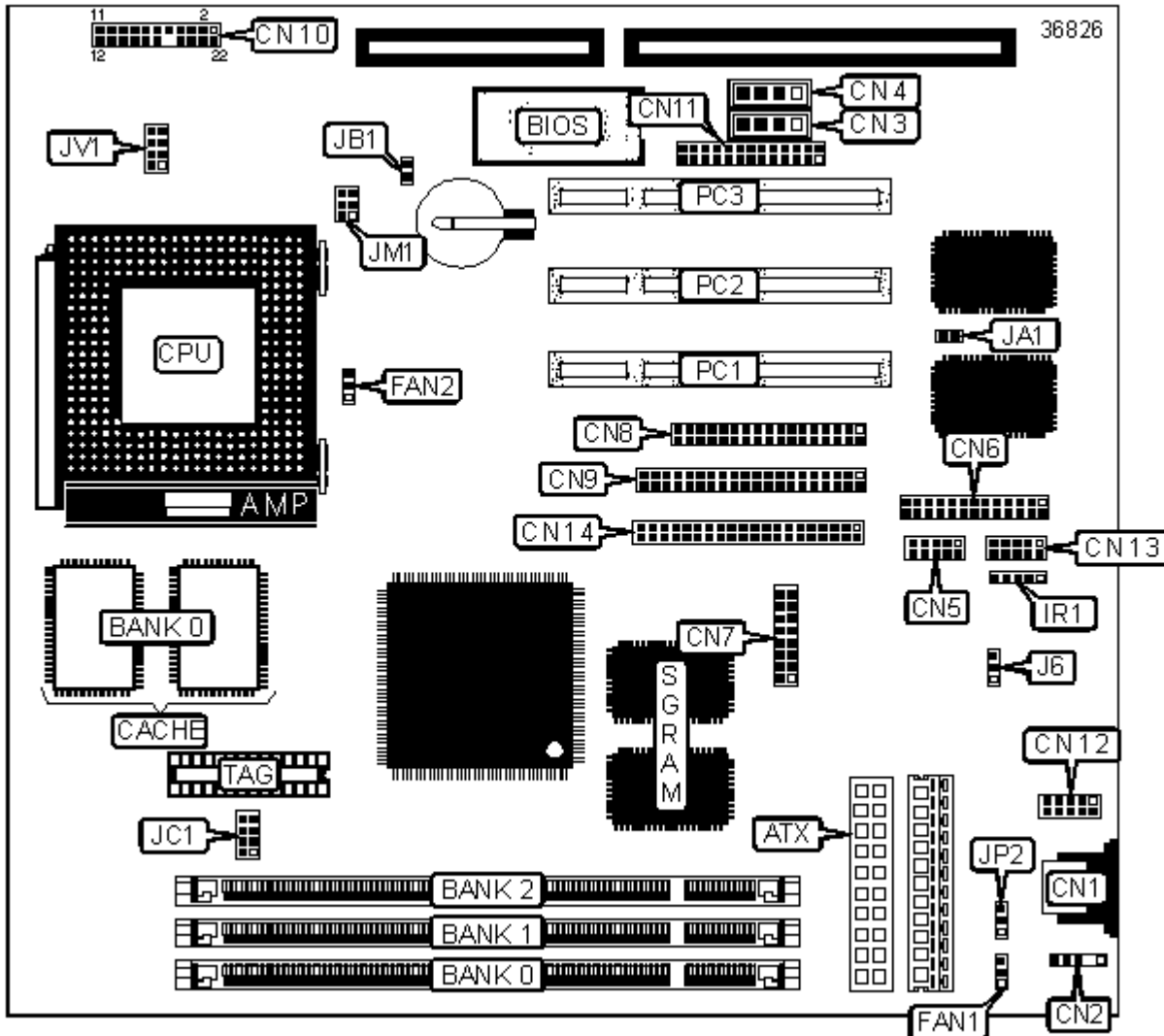


SUPERPOWER COMPUTER CO., LTD.

SP-5BSM

Device Type	Mainboard
Processor	CX 6X86L/CX 6X86MX/AM K6/AM K6-2/IDT Winchip2/Pentium/Pentium MMX
Processor Speed	133/150/166/200/233/250/266/300/333/350/400/450MHz
Chip Set	SIS
Video Chip Set	SIS
Audio Chip Set	Avance Logic
Maximum Onboard Memory	768MB (EDO & SDRAM supported)
Maximum Video Memory	4MB SGRAM
Cache	512/1024KB
BIOS	Award
Dimensions	220mm x 240mm
I/O Options	32-bit PCI slots (3), floppy drive interface, green PC connector, IDE interfaces (2), parallel port, PS/2 mouse port, PS/2 mouse interface, serial interfaces (2), VGA interface, IR connector, USB interface, ATX power connector, audio in - CD-ROMs (2), Wake-on-LAN connector



CONNECTIONS

Purpose	Location	Purpose	Location
---------	----------	---------	----------

ATX power connector	ATX	Turbo LED	CN10/Pins 9 & 14
Unidentified	CN1	Green PC LED	CN10/Pins 10 & 13
PS/2 mouse interface	CN2	Power switch	CN10/Pins 11 & 12
Audio in - CD-ROM	CN3	PC speaker	CN10/Pins 19 - 22
Audio in - CD-ROM	CN4	Sound interface	CN11
Serial interface 2	CN5	USB interface	CN12
Parallel interface	CN6	Serial interface 1	CN13
VGA interface	CN7	IDE interface 2	CN14
Floppy drive interface	CN8	System fan power	FAN1
IDE interface 1	CN9	CPU fan power	FAN2
Power LED & keylock	CN10/Pins 1 - 5	IR connector	IR1
IDE interface LED	CN10/Pins 6 & 17	Wake-on-LAN connector	J6
Green PC connector	CN10/Pins 7 & 16	32-bit PCI slots	PC1 - PC3
Reset switch	CN10/Pins 8 & 15		

USER CONFIGURABLE SETTINGS

Function		Label	Position
»	On board audio enabled	JA1	Closed
	On board audio disabled	JA1	Open
»	CMOS memory normal operation	JB1	Open
	CMOS memory clear	JB1	Closed
»	Factory configured - do not alter	JP2	Unidentified

DIMM CONFIGURATION

Size	Bank 0	Bank 1	Bank 2
16MB	(1) 2M x 64	None	None
32MB	(1) 2M x 64	(1) 2M x 64	None
32MB	(1) 4M x 64	None	None
48MB	(1) 2M x 64	(1) 2M x 64	(1) 2M x 64

64MB	(1) 4M x 64	(1) 4M x 64	None
64MB	(1) 8M x 64	None	None
64MB	(1) 4M x 64	(1) 2M x 64	(1) 2M x 64
96MB	(1) 4M x 64	(1) 4M x 64	(1) 4M x 64
96MB	(1) 8M x 64	(1) 2M x 64	(1) 2M x 64
128MB	(1) 8M x 64	(1) 8M x 64	None
128MB	(1) 16M x 64	None	None
128MB	(1) 8M x 64	(1) 4M x 64	(1) 4M x 64
160MB	(1) 16M x 64	(1) 2M x 64	(1) 2M x 64
192MB	(1) 8M x 64	(1) 8M x 64	(1) 8M x 64
192MB	(1) 16M x 64	(1) 4M x 64	(1) 4M x 64
256MB	(1) 16M x 64	(1) 16M x 64	None
256MB	(1) 32M x 64	None	None
256MB	(1) 16M x 64	(1) 8M x 64	(1) 8M x 64
288MB	(1) 32M x 64	(1) 2M x 64	(1) 2M x 64
320MB	(1) 32M x 64	(1) 4M x 64	(1) 4M x 64
384MB	(1) 16M x 64	(1) 16M x 64	(1) 16M x 64
384MB	(1) 32M x 64	(1) 8M x 64	(1) 8M x 64
512MB	(1) 32M x 64	(1) 32M x 64	None
512MB	(1) 32M x 64	(1) 16M x 64	(1) 16M x 64
768MB	(1) 32M x 64	(1) 32M x 64	(1) 32M x 64

Note: Board supports EDO & SDRAM memory.

CACHE CONFIGURATION

No information is provided for cache configuration.

CPU SPEED SELECTION (CX 6X86L)

CPU speed	Clock speed	Multiplier	JC1/Pins 1 & 2	JC1/Pins 3 & 4	JC1/Pins 5 & 6	JC1/Pins 7 & 8
150MHz	60MHz	2x	Open	Closed	Closed	Closed

166MHz	66MHz	2x	Open	Closed	Closed	Closed
200MHz	75MHz	2x	Open	Closed	Closed	Open

CPU SPEED SELECTION (CX 6X86L CON'T)

CPU speed	Clock speed	Multiplier	JM1/Pins 1 & 2	JM1/Pins 3 & 4	JM1/Pins 5 & 6
150MHz	66MHz	2x	Closed	Open	Open
166MHz	66MHz	2x	Closed	Open	Open
200MHz	75MHz	2x	Closed	Open	Open

CPU SPEED SELECTION (CX 6X86MX)

CPU speed	Clock speed	Multiplier	JC1/Pins 1 & 2	JC1/Pins 3 & 4	JC1/Pins 5 & 6	JC1/Pins 7 & 8
166MHz	66MHz	2x	Open	Closed	Closed	Closed
200MHz	66MHz	2.5x	Open	Closed	Closed	Closed
200MHz	75MHz	2x	Open	Closed	Closed	Open
233MHz	75MHz	2.5x	Open	Closed	Closed	Open
300MHz	75MHz	2.5x	Open	Closed	Closed	Open
333MHz	83MHz	5x	Open	Closed	Open	Closed

CPU SPEED SELECTION (CX 6X86MX CON'T)

CPU speed	Clock speed	Multiplier	JM1/Pins 1 & 2	JM1/Pins 3 & 4	JM1/Pins 5 & 6
166MHz	66MHz	2x	Closed	Open	Open
200MHz	75MHz	2.5x	Closed	Closed	Open
200MHz	75MHz	2x	Closed	Open	Open
233MHz	75MHz	2.5x	Closed	Closed	Open
300MHz	75MHz	2.5x	Closed	Closed	Open
333MHz	83MHz	5x	Open	Closed	Closed

CPU SPEED SELECTION (AM K6)

CPU speed	Clock speed	Multiplier	JC1/Pins 1 &	JC1/Pins 3 &	JC1/Pins 5 &	JC1/Pins 7 &
-----------	-------------	------------	--------------	--------------	--------------	--------------

			2	4	6	8
166MHz	66MHz	2.5x	Open	Closed	Closed	Closed
200MHz	66MHz	3x	Open	Closed	Closed	Closed
233MHz	66MHz	3.5x	Open	Closed	Closed	Closed
266MHz	66MHz	4x	Open	Closed	Closed	Closed
300MHz	66MHz	4.5x	Open	Closed	Closed	Closed

CPU SPEED SELECTION (AM K6 CON'T)					
CPU speed	Clock speed	Multiplier	JM1/Pins 1 & 2	JM1/Pins 3 & 4	JM1/Pins 5 & 6
166MHz	66MHz	2.5x	Closed	Closed	Open
200MHz	66MHz	3x	Open	Closed	Open
233MHz	66MHz	3.5x	Open	Open	Open
266MHz	66MHz	4x	Closed	Open	Closed
300MHz	66MHz	4.5x	Closed	Closed	Closed

CPU SPEED SELECTION (AM K6-2)						
CPU speed	Clock speed	Multiplier	JC1/Pins 1 & 2	JC1/Pins 3 & 4	JC1/Pins 5 & 6	JC1/Pins 7 & 8
250MHz	100MHz	2.5x	Open	Open	Closed	Closed
266MHz	100MHz	4x	Open	Open	Closed	Closed
300MHz	100MHz	3x	Open	Open	Closed	Closed
333MHz	112MHz	3.5x	Open	Closed	Open	Open
350MHz	100MHz	3.5x	Open	Open	Closed	Closed
400MHz	100MHz	4x	Open	Open	Closed	Closed
450MHz	100MHz	4.5x	Open	Open	Closed	Closed

CPU SPEED SELECTION (AM K6-2 CON'T)					
CPU speed	Clock speed	Multiplier	JM1/Pins 1 & 2	JM1/Pins 3 & 4	JM1/Pins 5 & 6
250MHz	100MHz	2.5x	Closed	Closed	Open
266MHz	100MHz	4x	Closed	Open	Closed

300MHz	100MHz	3x	Open	Closed	Open
333MHz	112MHz	3.5x	Open	Open	Open
350MHz	100MHz	3.5x	Open	Open	Open
400MHz	100MHz	4x	Closed	Open	Closed
450MHz	100MHz	4.5x	Closed	Closed	Closed

CPU SPEED SELECTION (IDT WINCHIP2)

CPU speed	Clock speed	Multiplier	JC1/Pins 1 & 2	JC1/Pins 3 & 4	JC1/Pins 5 & 6	JC1/Pins 7 & 8
200MHz	66MHz	3x	Open	Closed	Closed	Closed
233MHz	83MHz	2x	Open	Closed	Open	Closed
233MHz	100MHz	2.5x	Open	Open	Closed	Closed
266MHz	100MHz	5x	Open	Open	Closed	Closed

CPU SPEED SELECTION (IDT WINCHIP2 CON'T)

CPU speed	Clock speed	Multiplier	JM1/Pins 1 & 2	JM1/Pins 3 & 4	JM1/Pins 5 & 6
200MHz	66MHz	3x	Open	Closed	Open
233MHz	83MHz	2x	Closed	Open	Open
233MHz	100MHz	2.5x	Closed	Closed	Open
266MHz	100MHz	5x	Open	Closed	Closed

CPU SPEED SELECTION (PENTIUM)

CPU speed	Clock speed	Multiplier	JC1/Pins 1 & 2	JC1/Pins 3 & 4	JC1/Pins 5 & 6	JC1/Pins 7 & 8
133MHz	66MHz	2x	Open	Closed	Closed	Closed
150MHz	60MHz	2x	Open	Closed	Closed	Closed
166MHz	66MHz	2.5x	Open	Closed	Closed	Closed
200MHz	66MHz	3x	Open	Closed	Closed	Closed

CPU SPEED SELECTION (PENTIUM CON'T)

CPU speed	Clock speed	Multiplier	JM1/Pins 1 & 2	JM1/Pins 3 & 4	JM1/Pins 5 & 6
133MHz	66MHz	2x	Closed	Open	Open
150MHz	66MHz	2x	Closed	Open	Open
166MHz	66MHz	2.5x	Closed	Closed	Open
200MHz	66MHz	3x	Open	Closed	Open

CPU SPEED SELECTION (PENTIUM MMX)

CPU speed	Clock speed	Multiplier	JC1/Pins 1 & 2	JC1/Pins 3 & 4	JC1/Pins 5 & 6	JC1/Pins 7 & 8
166MHz	66MHz	2.5x	Open	Closed	Closed	Closed
200MHz	66MHz	3x	Open	Closed	Closed	Closed
233MHz	66MHz	3.5x	Open	Closed	Closed	Closed
266MHz	66MHz	4x	Open	Closed	Closed	Closed

CPU SPEED SELECTION (PENTIUM MMX CON'T)

CPU speed	Clock speed	Multiplier	JM1/Pins 1 & 2	JM1/Pins 3 & 4	JM1/Pins 5 & 6
133MHz	66MHz	2.5x	Closed	Closed	Open
150MHz	66MHz	3x	Open	Closed	Open
166MHz	66MHz	3.5x	Open	Open	Open
200MHz	66MHz	4x	Closed	Open	Closed

CPU VOLTAGE SELECTION

Voltage	JV1/Pins 1 & 2	JV1/Pins 3 & 4	JV1/Pins 5 & 6	JV1/Pins 7 & 8
Auto	Open	Open	Open	Open
2.1V	Closed	Open	Open	Open
2.2V	Open	Closed	Open	Open
2.3V	Closed	Closed	Open	Open
2.4V	Open	Open	Closed	Open
2.5V	Closed	Open	Closed	Open
2.6V	Open	Closed	Closed	Open

2.7V	Closed	Closed	Closed	Open
2.8V	Open	Open	Open	Closed
2.9V	Closed	Open	Open	Closed
3.0V	Open	Closed	Open	Closed
3.1V	Closed	Closed	Open	Closed
3.2V	Open	Open	Closed	Closed
3.3V	Closed	Open	Closed	Closed
3.4V	Open	Closed	Closed	Closed
3.5V	Closed	Closed	Closed	Closed