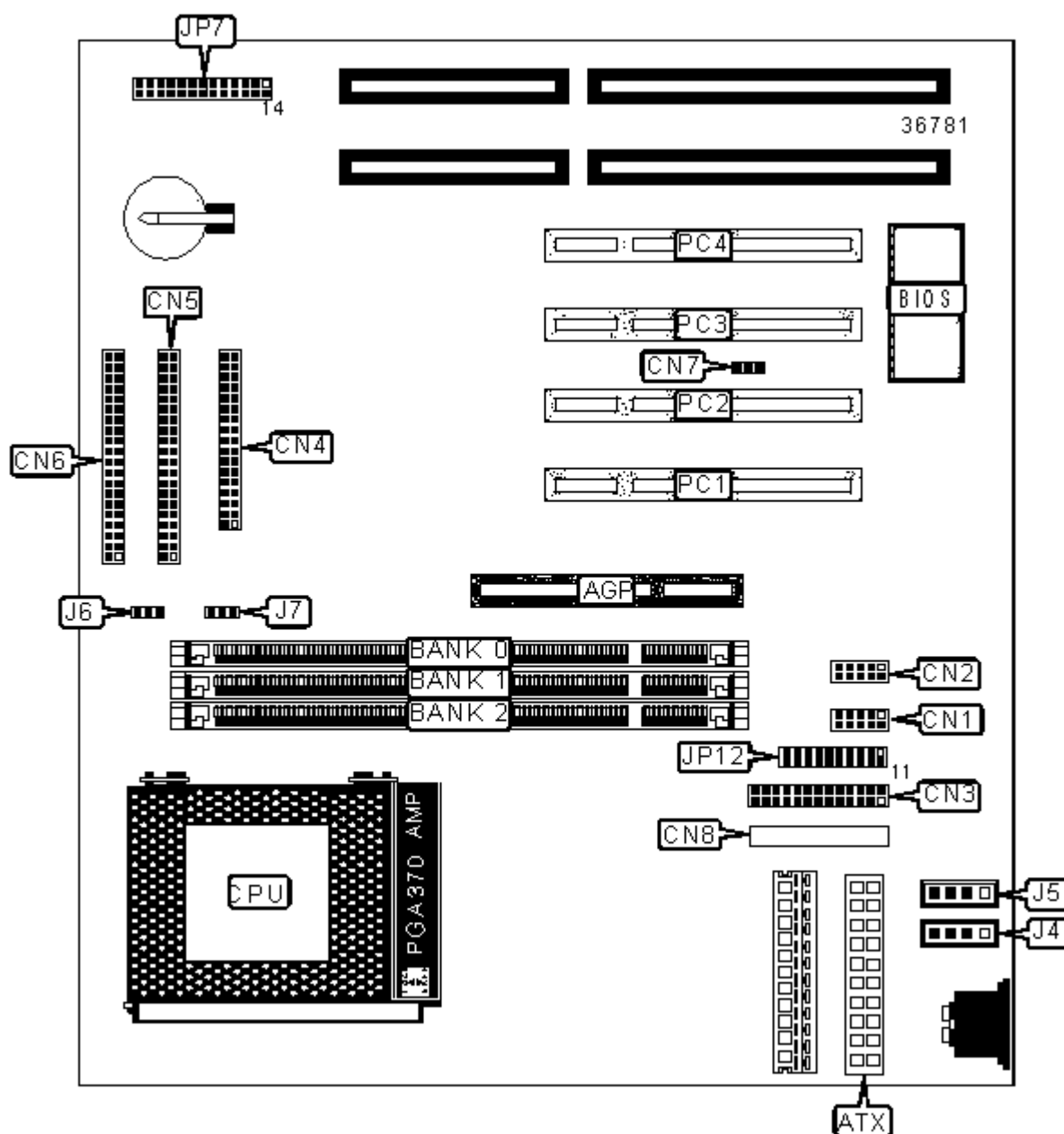


ZIDA TECHNOLOGIES, LTD.

BX3D-CT (VER. 1.01)

Device Type	Mainboard
Processor	Celeron
Processor Speed	200/233/266/300/333/366MHz
Chip Set	VIA
Maximum Onboard Memory	768MB (SDRAM supported)
Cache	0/128KB (located on the Celeron CPU)
BIOS	Award
Dimensions	Unidentified
I/O Options	32-bit PCI slots (4), floppy drive interface, IDE interfaces (2), parallel interface, PS/2 mouse interface, serial interfaces (2), IR connector, USB interfaces (2), ATX power connector, AGP slot, audio header connector, audio in - CD-ROMs (2), Wake-on-LAN connector



Purpose	Location	Purpose	Location
AGP slot	AGP	CPU fan power	J7
ATX power connector	ATX	Power LED & keylock	JP7/Pins 1-5
Serial interface 1	CN1	SMI switch	JP7/Pins 7 & 8
IR/Serial interface 2	CN2	Speaker	JP7/Pins 10-13
Parallel interface	CN3	IDE interface LED	JP7/Pins 14 & 15
Floppy drive interface	CN4	Power switch	JP7/Pins 17 & 18
IDE interface 2	CN5	Reset switch	JP7/Pins 22 & 23
IDE interface 1	CN6	Turbo LED	JP7/Pins 25 & 26
Wake-on-LAN connector	CN7	USB interface 1	JP12/Pins 1-5
Audio connector	CN8	USB interface 2	JP12/Pins 11-15
Audio in - CD-ROM 1	J4	PS/2 mouse interface	JP12/Pins 6-10
Audio in - CD-ROM 2	J5	IR connector	JP12/Pins 16-20
CPU fan power	J6	32-bit PCI slots	PC1 - PC4

DIMM CONFIGURATION			
Size	Bank 0	Bank 1	Bank 2
8MB	(1) 1M x 64	None	None
16MB	(1) 1M x 64	(1) 1M x 64	None
16MB	(1) 2M x 64	None	None
24MB	(1) 1M x 64	(1) 1M x 64	(1) 1M x 64
32MB	(1) 2M x 64	(1) 2M x 64	None
32MB	(1) 4M x 64	None	None
32MB	(1) 2M x 64	(1) 1M x 64	(1) 1M x 64
48MB	(1) 2M x 64	(1) 2M x 64	(1) 2M x 64
48MB	(1) 4M x 64	(1) 1M x 64	(1) 1M x 64
64MB	(1) 4M x 64	(1) 4M x 64	None
64MB	(1) 8M x 64	None	None
64MB	(1) 4M x 64	(1) 2M x 64	(1) 2M x 64

80MB	(1) 8M x 64	(1) 1M x 64	(1) 1M x 64
96MB	(1) 4M x 64	(1) 4M x 64	(1) 4M x 64
96MB	(1) 8M x 64	(1) 2M x 64	(1) 2M x 64
128MB	(1) 8M x 64	(1) 8M x 64	None
128MB	(1) 16M x 64	None	None
128MB	(1) 8M x 64	(1) 4M x 64	(1) 4M x 64
144MB	(1) 16M x 64	(1) 1M x 64	(1) 1M x 64
160MB	(1) 16M x 64	(1) 2M x 64	(1) 2M x 64
192MB	(1) 8M x 64	(1) 8M x 64	(1) 8M x 64
192MB	(1) 16M x 64	(1) 4M x 64	(1) 4M x 64
256MB	(1) 16M x 64	(1) 16M x 64	None
256MB	(1) 32M x 64	None	None
256MB	(1) 16M x 64	(1) 8M x 64	(1) 8M x 64
272MB	(1) 32M x 64	(1) 1M x 64	(1) 1M x 64
288MB	(1) 32M x 64	(1) 2M x 64	(1) 2M x 64
320MB	(1) 32M x 64	(1) 4M x 64	(1) 4M x 64
384MB	(1) 16M x 64	(1) 16M x 64	(1) 16M x 64
384MB	(1) 32M x 64	(1) 8M x 64	(1) 8M x 64
512MB	(1) 32M x 64	(1) 32M x 64	None
512MB	(1) 32M x 64	(1) 16M x 64	(1) 16M x 64
768MB	(1) 32M x 64	(1) 32M x 64	(1) 32M x 64
Note: Board supports SDRAM memory.			

CACHE CONFIGURATION

Note: 128KB cache is located on the Celeron 300A and greater CPUs.