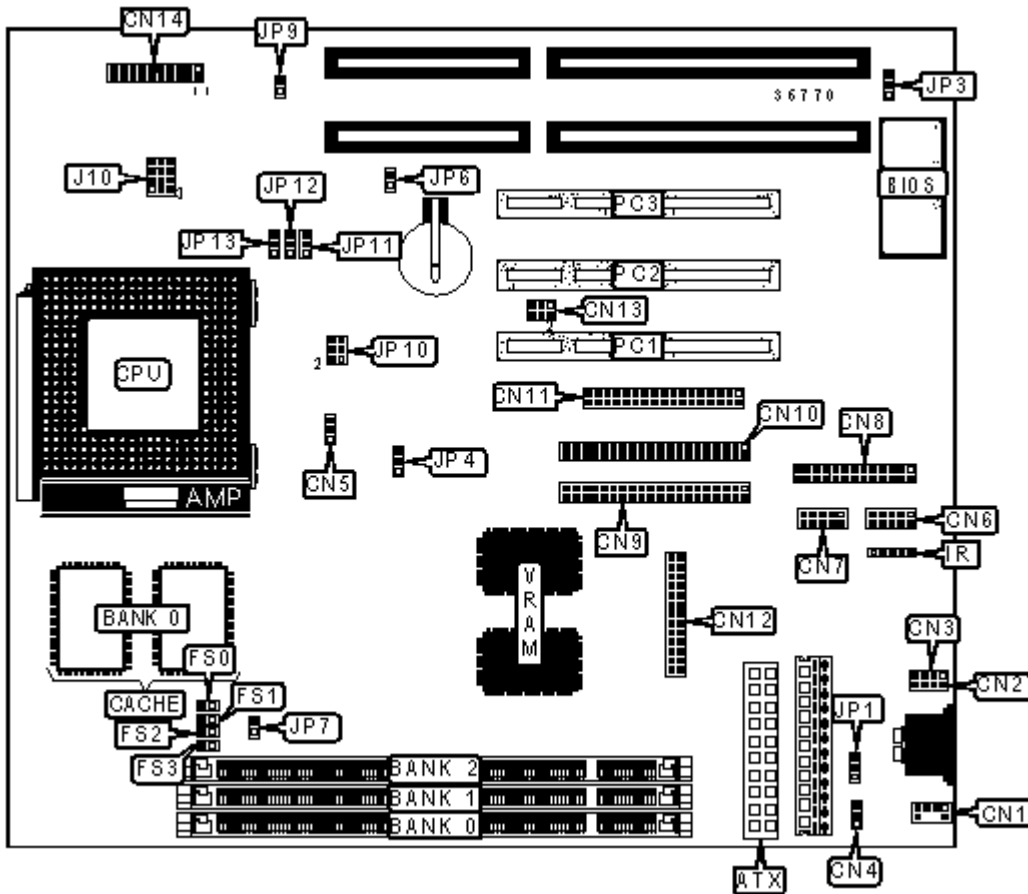


ENPC TECHNOLOGY CORPORATION

EP-PS11 (REV. A)

Device Type	Mainboard
Processor	CX 6X86MX/CX M2/AM K5/AM K6/AM K6-2/Pentium/Pentium MMX
Processor Speed	90/100/120/133/150/166/180/200/233/266/300/333/350/366/380/400/450/475M Hz
Chip Set	SIS
Video Chip Set	SIS
Maximum Onboard Memory	768MB (SDRAM supported)
Maximum Video Memory	4MB
Cache	512KB/1024MB
BIOS	Award
Dimensions	220mm x 230mm
I/O Options	32-bit PCI slots (3), floppy drive interface, IDE interfaces (2), parallel interface, PS/2 mouse interface, serial interfaces (2), VGA feature connector, IR connector, USB interfaces (2), ATX power connector, SB-Link connector



CONNECTIONS

Purpose	Location	Purpose	Location
ATX power connector	ATX	VGA connector	CN12
PS/2 mouse interface	CN1	SB Link connector	CN13
USB interface 1	CN2	Reset switch	CN14/Pins 1 & 2

USB interface 2	CN3	IDE interface 2 LED	CN14/Pins 3 & 4
Chassis fan power	CN4	Power switch	CN14/Pins 5 & 6
CPU fan power	CN5	ACPI LED	CN14/Pins 7 & 8
Serial interface 1	CN6	IDE interface 1 LED	CN14/Pins 9 & 10
Serial interface 2	CN7	Power LED & keylock	CN14/Pins 11-16
Parallel interface	CN8	Speaker	CN14/Pins 17-20
IDE interface 1	CN9	IR connector	IR
IDE interface 2	CN10	32-bit PCI slots	PC1 - PC3
Floppy drive interface	CN11		

USER CONFIGURABLE SETTINGS

Function		Label	Position
	Power supply selection ATX	JP1	Pins 1 & 2 closed
	Power supply selection AT	JP1	Pins 2 & 3 closed
	Flash BIOS voltage selection 12v	JP3	Pins 1 & 2 closed
	Flash BIOS voltage selection 5v	JP3	Pins 2 & 3 closed
	Chipset version selection B2	JP4	Pins 1 & 2 closed
	Chipset version selection A	JP4	Pins 2 & 3 closed
»	CMOS memory normal operation	JP6	Open
	CMOS memory clear	JP6	Closed
	Cache write through mode	JP7	Closed
	Cache write back mode	JP7	Open
	CPU voltage auto-detect enabled	JP9	Closed
	CPU voltage auto-detect disabled	JP9	Open
	Cache toggle mode	JP10	Pins 5 & 6 closed
	Cache linear mode	JP10	Pins 5 & 6 open

CACHE JUMPER CONFIGURATION

Size	JP10
512KB	Pins 1 & 2 closed
1024KB	Pins 1 & 2, 3 & 4 closed

CLOCK SPEED SELECTION				
Speed	FS0	FS1	FS2	FS3
66MHz	Closed	Closed	Closed	Open
75MHz	Open	Closed	Closed	Open
83MHz	Closed	Open	Closed	Open
95MHz	Open	Open	Closed	Open
100MHz	Closed	Closed	Open	Open
112MHz	Open	Closed	Open	Open
124MHz	Closed	Open	Open	Open
133MHz	Open	Open	Open	Open

CPU MULTIPLIER SELECTION			
Multiplier	JP11	JP12	JP13
2x	Pins 1 & 2 closed	Pins 1 & 2 closed	Pins 2 & 3 closed
2.5x	Pins 1 & 2 closed	Pins 2 & 3 closed	Pins 2 & 3 closed
3x	Pins 1 & 2 closed	Pins 2 & 3 closed	Pins 1 & 2 closed
3.5x	Pins 1 & 2 closed	Pins 1 & 2 closed	Pins 1 & 2 closed
4x	Pins 2 & 3 closed	Pins 1 & 2 closed	Pins 2 & 3 closed
4.5x	Pins 2 & 3 closed	Pins 2 & 3 closed	Pins 2 & 3 closed
5x	Pins 2 & 3 closed	Pins 2 & 3 closed	Pins 1 & 2 closed
5.5x	Pins 2 & 3 closed	Pins 1 & 2 closed	Pins 1 & 2 closed

DIMM CONFIGURATION			
Size	Bank 0	Bank 1	Bank 2
8MB	(1) 1M x 64	None	None

16MB	(1) 1M x 64	(1) 1M x 64	None
16MB	(1) 2M x 64	None	None
24MB	(1) 1M x 64	(1) 1M x 64	(1) 1M x 64
32MB	(1) 2M x 64	(1) 2M x 64	None
32MB	(1) 4M x 64	None	None
32MB	(1) 2M x 64	(1) 1M x 64	(1) 1M x 64
48MB	(1) 2M x 64	(1) 2M x 64	(1) 2M x 64
48MB	(1) 4M x 64	(1) 1M x 64	(1) 1M x 64
64MB	(1) 4M x 64	(1) 4M x 64	None
64MB	(1) 8M x 64	None	None
64MB	(1) 4M x 64	(1) 2M x 64	(1) 2M x 64
80MB	(1) 8M x 64	(1) 1M x 64	(1) 1M x 64
96MB	(1) 4M x 64	(1) 4M x 64	(1) 4M x 64
96MB	(1) 8M x 64	(1) 2M x 64	(1) 2M x 64
128MB	(1) 8M x 64	(1) 8M x 64	None
128MB	(1) 16M x 64	None	None
128MB	(1) 8M x 64	(1) 4M x 64	(1) 4M x 64
144MB	(1) 16M x 64	(1) 1M x 64	(1) 1M x 64
160MB	(1) 16M x 64	(1) 2M x 64	(1) 2M x 64
192MB	(1) 8M x 64	(1) 8M x 64	(1) 8M x 64
192MB	(1) 16M x 64	(1) 4M x 64	(1) 4M x 64
256MB	(1) 16M x 64	(1) 16M x 64	None
256MB	(1) 32M x 64	None	None
256MB	(1) 16M x 64	(1) 8M x 64	(1) 8M x 64
272MB	(1) 32M x 64	(1) 1M x 64	(1) 1M x 64
288MB	(1) 32M x 64	(1) 2M x 64	(1) 2M x 64
320MB	(1) 32M x 64	(1) 4M x 64	(1) 4M x 64
384MB	(1) 16M x 64	(1) 16M x 64	(1) 16M x 64
384MB	(1) 32M x 64	(1) 8M x 64	(1) 8M x 64

512MB	(1) 32M x 64	(1) 32M x 64	None
512MB	(1) 32M x 64	(1) 16M x 64	(1) 16M x 64
768MB	(1) 32M x 64	(1) 32M x 64	(1) 32M x 64

Note: Board supports SDRAM memory.

CPU VOLTAGE SELECTION	
Voltage	J10
Auto-detect	Pins 1 & 2, 4 & 5, 7 & 8, 10 & 11 closed
2.2V	Pins 5 & 6 closed
2.8V	Pins 11 & 12 closed
2.9V	Pins 2 & 3, 11 & 12 closed
3.3V	Pins 2 & 3, 5 & 6, 11 & 12 closed
3.5V	Pins 2 & 3, 5 & 6, 8 & 9, 11 & 12 closed

MISCELLANEOUS TECHNICAL NOTES
Processor speeds listed include the speeds available for the Cyrix 6X86MX CPU, which is synonymous with the Cyrix M2 CPU.