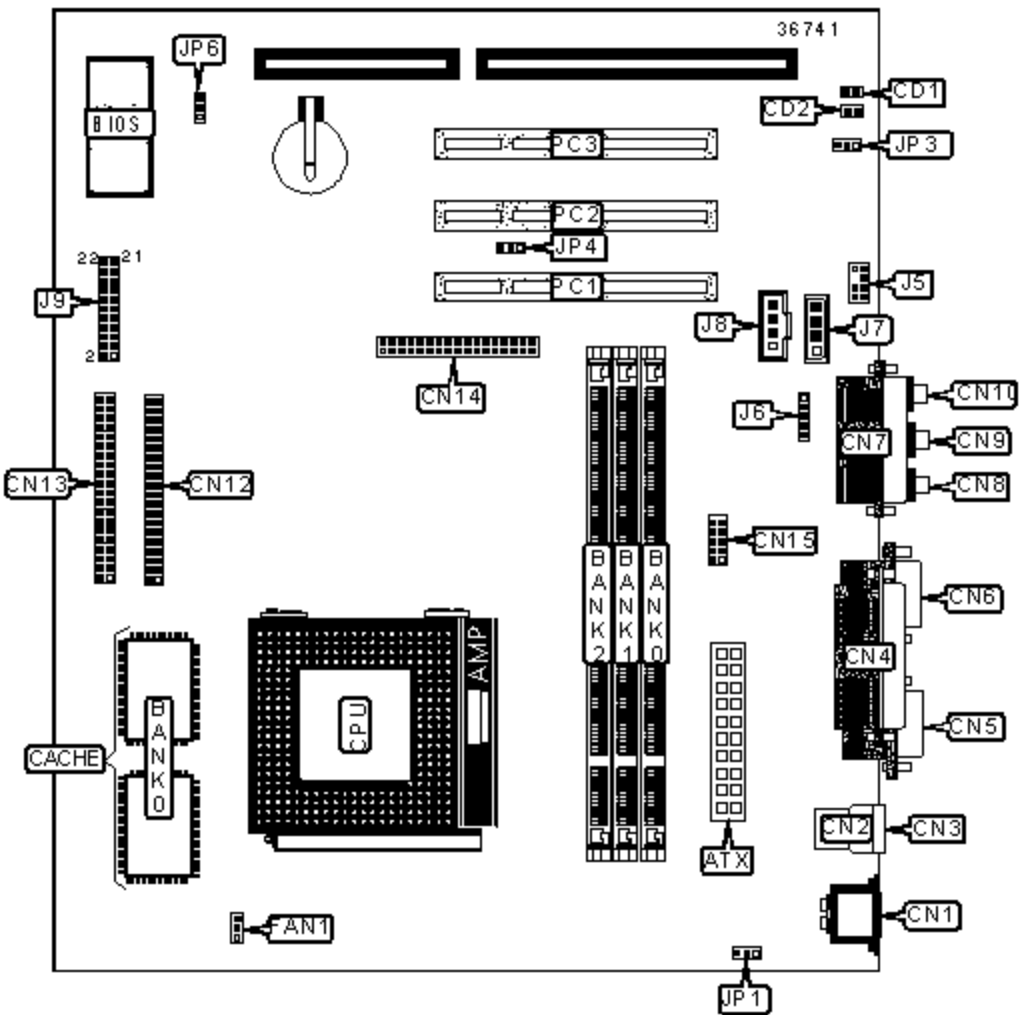


EURONE

MS-6380SG

Device Type	Mainboard
Processor	CX 6X86L/IBM 6X86L/CX 686MX/IBM 6X86MX/CX M2/AM K6/AM K6-2/Pentium/Pentium MMX/IDT C6
Processor Speed	75/90/100/120/133/150/166/200/225/233/240/266/300/333/350/366/ 380/400/450/475MHz
Chip Set	SIS 530
Video Chip Set	SIS
Audio Chip Set	CMI
Maximum Onboard Memory	768MB (SDRAM supported)
Maximum Video Memory	8MB (shared from system memory)
Maximum Audio Memory	Unidentified
Cache	1024/2048KB
BIOS	AMI
Dimensions	245mm x 190mm
I/O Options	32-bit PCI slots (3), floppy drive interface, game port, IDE interfaces (2), parallel port, PS/2 mouse port, serial port, serial interface, VGA port, IR connector, USB ports (2), ATX power connector, line in, line out, microphone in, audio in - CD-ROMs (2), Wake on LAN connector



CONNECTIONS

Purpose	Location	Purpose	Location
ATX power connector	ATX	Serial port 2	CN15

SPDIF in	CN1	CPU fan power	FAN1
PS/2 mouse port	CN1	Wake on LAN connector	JP4
USB connector 1	CN2	Digital audio connector	J5
USB connector 2	CN3	IR connector	J6
Parallel port	CN4	Audio in - CD-ROM (Panasonic)	J7
Serial port 1	CN5	Audio in - CD-ROM (Sony)	J8
VGA port	CN6	Speaker	J9/Pins 1, 3, 5, 7
Game port	CN7	Power LED & keylock	J9/Pins 2, 4, 6, 8, 10
Line in/rear	CN8	Turbo LED	J9/Pins 13 & 14
Microphone in	CN9	IDE interface LED	J9/Pins 15 & 16
Line out	CN10	Reset switch	J9/Pins 17 & 18
IDE interface 2	CN12	Power button	J9/Pins 21 & 22
IDE interface 1	CN13	32-bit PCI slots	PC1 - PC3
Floppy drive interface	CN14		

USER CONFIGURABLE SETTINGS

Function		Label	Position
»	SPDIF out signal voltage selection 0.5v	CD2	Open
	SPDIF out signal voltage selection 5v	CD2	Closed
»	Keyboard power on disabled	JP1	Pins 1 & 2 closed
	Keyboard power on enabled	JP1	Pins 2 & 3 closed
»	On-board sound enabled	JP3	Pins 2 & 3 closed
	On-board sound disabled	JP3	Pins 1 & 2 closed
»	CMOS memory normal operation	JP6	Pins 1 & 2 closed
	CMOS memory clear	JP6	Pins 2 & 3 closed

DIMM CONFIGURATION

Size	Bank 0	Bank 1	Bank 2
------	--------	--------	--------

4MB	(1) 512KB x 64	None	None
8MB	(1) 1M x 64	None	None
8MB	(1) 512KB x 64	(1) 512KB x 64	None
12MB	(1) 512KB x 64	(1) 512KB x 64	(1) 512KB x 64
16MB	(1) 2M x 64	None	None
16MB	(1) 1M x 64	(1) 1M x 64	None
20MB	(1) 1M x 64	(1) 1M x 64	(1) 512KB x 64
24MB	(1) 1M x 64	(1) 1M x 64	(1) 1M x 64
32MB	(1) 4M x 64	None	None
32MB	(1) 2M x 64	(1) 2M x 64	None
36MB	(1) 2M x 64	(1) 2M x 64	(1) 512KB x 64
40MB	(1) 2M x 64	(1) 2M x 64	(1) 1M x 64
48MB	(1) 2M x 64	(1) 2M x 64	(1) 2M x 64
64MB	(1) 8M x 64	None	None
64MB	(1) 4M x 64	(1) 4M x 64	None
68MB	(1) 4M x 64	(1) 4M x 64	(1) 512KB x 64
72MB	(1) 4M x 64	(1) 4M x 64	(1) 1M x 64
80MB	(1) 4M x 64	(1) 4M x 64	(1) 2M x 64
96MB	(1) 4M x 64	(1) 4M x 64	(1) 4M x 64
128MB	(1) 16M x 64	None	None
128MB	(1) 8M x 64	(1) 8M x 64	None
132MB	(1) 8M x 64	(1) 8M x 64	(1) 512KB x 64
136MB	(1) 8M x 64	(1) 8M x 64	(1) 1M x 64
144MB	(1) 8M x 64	(1) 8M x 64	(1) 2M x 64
160MB	(1) 8M x 64	(1) 8M x 64	(1) 4M x 64
192MB	(1) 8M x 64	(1) 8M x 64	(1) 8M x 64
256MB	(1) 16M x 64	(1) 16M x 64	None

256MB	(1) 32M x 64	None	None
260MB	(1) 16M x 64	(1) 16M x 64	(1) 512KB x 64
264MB	(1) 16M x 64	(1) 16M x 64	(1) 1M x 64
272MB	(1) 16M x 64	(1) 16M x 64	(1) 2M x 64
288MB	(1) 16M x 64	(1) 16M x 64	(1) 4M x 64
320MB	(1) 16M x 64	(1) 16M x 64	(1) 8M x 64
384MB	(1) 16M x 64	(1) 16M x 64	(1) 16M x 64
512MB	(1) 32M x 64	(1) 32M x 64	None
516MB	(1) 32M x 64	(1) 32M x 64	(1) 512KB x 64
520MB	(1) 32M x 64	(1) 32M x 64	(1) 1M x 64
528MB	(1) 32M x 64	(1) 32M x 64	(1) 2M x 64
544MB	(1) 32M x 64	(1) 32M x 64	(1) 4M x 64
576MB	(1) 32M x 64	(1) 32M x 64	(1) 8M x 64
640MB	(1) 32M x 64	(1) 32M x 64	(1) 16M x 64
768MB	(1) 32M x 64	(1) 32M x 64	(1) 32M x 64

Note: Board supports SDRAM memory.