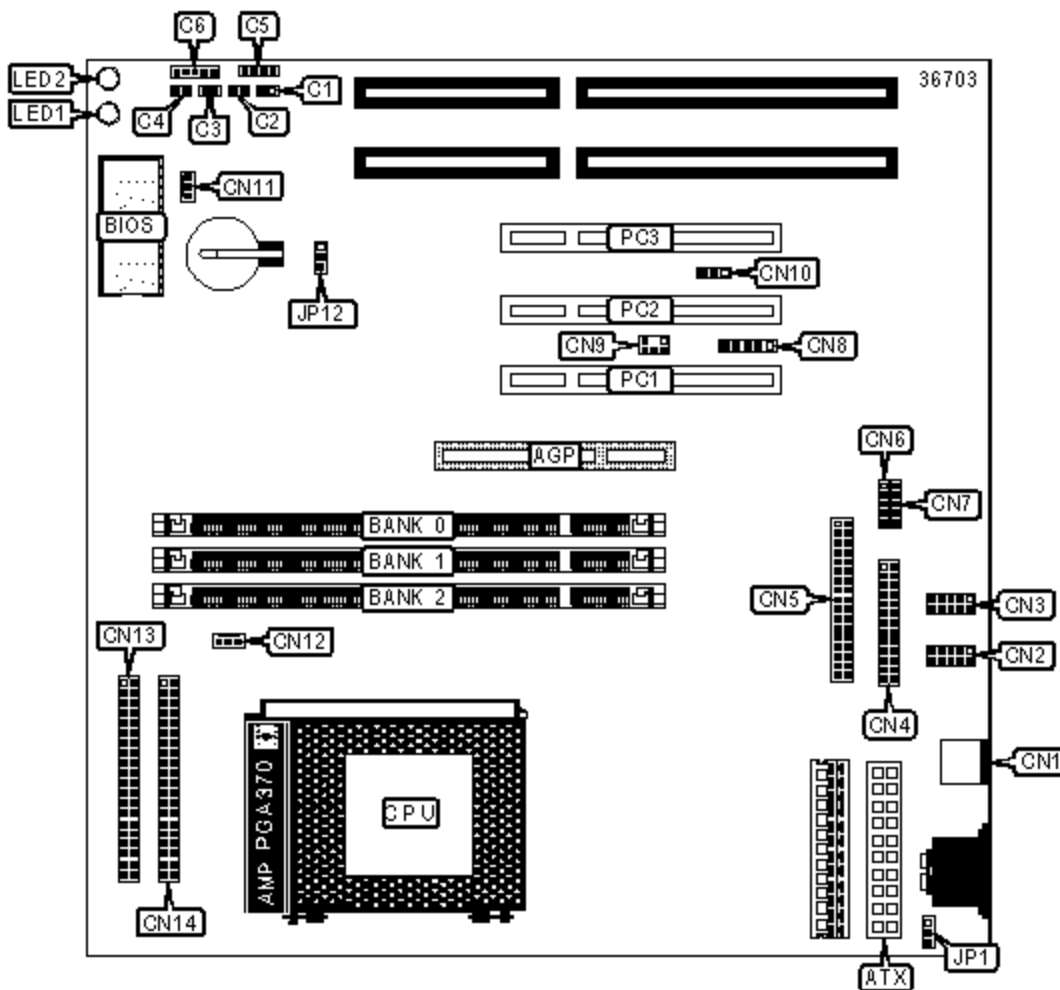


FREE COMPUTER TECHNOLOGY, INC.

P6F106

Device Type	Mainboard
Processor	Celeron
Processor Speed	300/333/366/400/433/466/500MHz
Chip Set	Intel 440LX
Maximum Onboard Memory	384/768MB (EDO & SDRAM supported)
Cache	0/128KB (located on the Celeron CPU)
BIOS	Award
Dimensions	220mm x 220mm
I/O Options	32-bit PCI slots (3), floppy drive interface, IDE interfaces (2), parallel interface, PS/2 mouse port, serial interfaces (2), IR connector, USB interfaces (2), ATX power connector, AGP slot, SB-Link connector, Wake on LAN connector



CONNECTIONS

Purpose	Location	Purpose	Location
AGP slot	AGP	Floppy drive interface	CN5
ATX power connector	ATX	USB interface 1	CN6
IDE interface LED	C1	USB interface 2	CN7

Standby LED	C2	IR connector	CN8
Reset switch	C3	SB-link connector	CN9
Power switch	C4	Wake-on-LAN connector	CN10
PC Speaker	C5	Secondary fan power	CN11
Power LED & keylock	C6	CPU fan power	CN12
PS/2 mouse port	CN1	IDE interface 1	CN13
Serial interface 1	CN2	IDE interface 2	CN14
Serial interface 2	CN3	32-bit PCI slots	PC1 - PC3
Parallel interface	CN4		

USER CONFIGURABLE SETTINGS

Function		Label	Position
	Key-in password disabled. Keyboard and PS/2 mouse use power supply's +5V.	JP1	Pins 1 & 2 closed
»	Key-in password enabled (ATX only). Keyboard and PS/2 mouse use power supply's +5Vsb (stand-by)	JP1	Pins 2 & 3 closed
»	CMOS memory and password normal operation	JP12	Pins 1 & 2 closed
	CMOS memory and password clear	JP12	Pins 2 & 3 closed

DIMM CONFIGURATION

Size	Bank 0	Bank 1	Bank 2
8MB	(1) 1M x 64	None	None
16MB	(1) 1M x 64	(1) 1M x 64	None
16MB	(1) 2M x 64	None	None
24MB	(1) 1M x 64	(1) 1M x 64	(1) 1M x 64
32MB	(1) 2M x 64	(1) 2M x 64	None
32MB	(1) 4M x 64	None	None
32MB	(1) 2M x 64	(1) 1M x 64	(1) 1M x 64
48MB	(1) 2M x 64	(1) 2M x 64	(1) 2M x 64

48MB	(1) 4M x 64	(1) 1M x 64	(1) 1M x 64
64MB	(1) 4M x 64	(1) 4M x 64	None
64MB	(1) 8M x 64	None	None
64MB	(1) 4M x 64	(1) 2M x 64	(1) 2M x 64
80MB	(1) 8M x 64	(1) 1M x 64	(1) 1M x 64
96MB	(1) 4M x 64	(1) 4M x 64	(1) 4M x 64
96MB	(1) 8M x 64	(1) 2M x 64	(1) 2M x 64
128MB	(1) 8M x 64	(1) 8M x 64	None
128MB	(1) 16M x 64	None	None
128MB	(1) 8M x 64	(1) 4M x 64	(1) 4M x 64
144MB	(1) 16M x 64	(1) 1M x 64	(1) 1M x 64
160MB	(1) 16M x 64	(1) 2M x 64	(1) 2M x 64
192MB	(1) 8M x 64	(1) 8M x 64	(1) 8M x 64
192MB	(1) 16M x 64	(1) 4M x 64	(1) 4M x 64
256MB	(1) 16M x 64	(1) 16M x 64	None
256MB	(1) 32M x 64*	None	None
256MB	(1) 16M x 64	(1) 8M x 64	(1) 8M x 64
272MB	(1) 32M x 64*	(1) 1M x 64	(1) 1M x 64
288MB	(1) 32M x 64*	(1) 2M x 64	(1) 2M x 64
320MB	(1) 32M x 64*	(1) 4M x 64	(1) 4M x 64
384MB	(1) 16M x 64	(1) 16M x 64	(1) 16M x 64
384MB	(1) 32M x 64*	(1) 8M x 64	(1) 8M x 64
512MB	(1) 32M x 64*	(1) 32M x 64*	None
512MB	(1) 32M x 64*	(1) 16M x 64	(1) 16M x 64
768MB	(1) 32M x 64*	(1) 32M x 64*	(1) 32M x 64*

Note: Board supports EDO & SDRAM memory. EDO and SDRAM DIMMs can be mixed. Maximum EDO is 768MB. Maximum SDRAM is 384MB.

Note: * EDO DIMM required

CACHE CONFIGURATION

Note: 128KB cache is located on the Celeron 300A and greater CPUs.