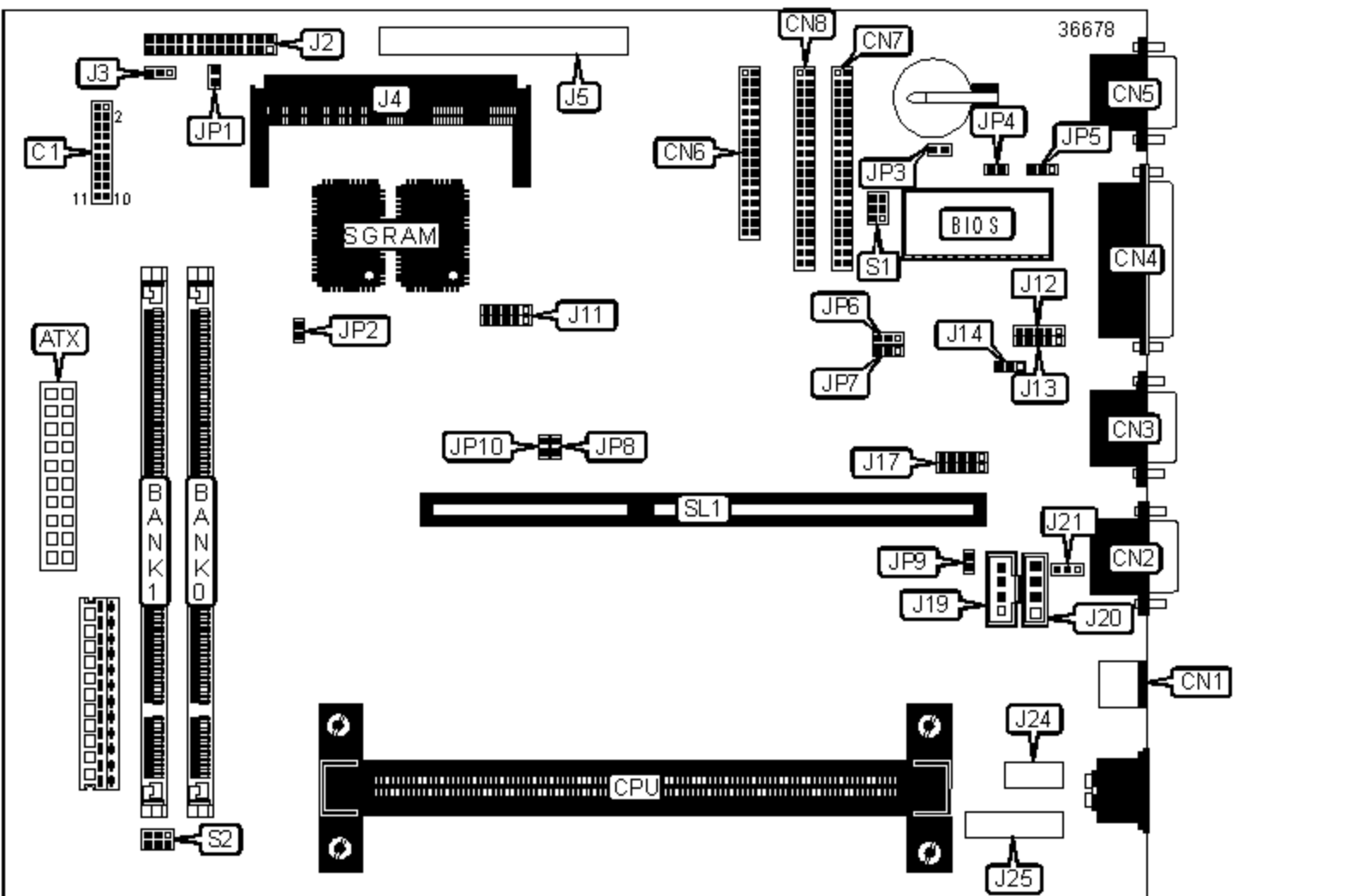


DTK COMPUTER, INC.

PRM-0060I (VER. 1.01)

Device Type	Mainboard
Processor	Pentium II
Processor Speed	233/266/300/333MHz
Chip Set	Intel 440EX
Video Chip Set	ATI
Audio Chip Set	Creative Labs, Inc.
Maximum Onboard Memory	512MB (EDO & SDRAM supported)
Maximum Video Memory	8MB
Cache	256/512KB (located on the Pentium II CPU)
BIOS	Award
Dimensions	270mm x 205mm
I/O Options	Ethernet extension connector, floppy drive interface, green PC connector, IDE interfaces (2), parallel port, PS/2 mouse port, serial ports (2), VGA feature connector, VGA port, IR connectors (2), USB interface, ATX power connector, audio in - CD-ROMs (2), Wake-on-LAN/Power-on-ring connector, Extension slot, TV-out extension connector, Audio port connectors (2)



CONNECTIONS			
Purpose	Location	Purpose	Location
ATX power connector	ATX	Feature connector	J2

IDE interface LED	C1/Pins 1 & 2	System fan power connector	J3
Power LED	C1/Pins 3 & 4	VGA SO-DIMM connector	J4
Power switch	C1/Pins 5 & 6	TV-out extension connector	J5
Reset switch	C1/Pins 9 & 10	Ethernet extension connector	J11
Power LED & Keylock	C1/Pins 16 - 20	IR connector 1	J12
PC speaker	C1/Pins 11 - 14	IR connector 2	J13
PS/2 mouse port	CN1	Wake-on-LAN/Power-on-Ring connector	J14
Serial port 2	CN2	USB interface	J17
Serial port 1	CN3	Audio in - CD-ROM (Sony)	J19
Parallel port	CN4	Audio in - CD-ROM (Mitsumi/Panasonic)	J20
VGA port	CN5	CPU fan power	J21
Floppy drive interface	CN6	Audio port connector	J24
IDE interface 1	CN7	Audio port connector	J25
IDE interface 2	CN8	Extension slot	SL1

USER CONFIGURABLE SETTINGS

Function		Label	Position
	On board VGA enabled	JP1	Closed
	On board VGA disabled	JP1	Open
	On board AGP VGA interrupt enabled	JP2	Closed
	On board AGP VGA interrupt disabled	JP2	Open
	Flash BIOS voltage select 5V	JP5	Pins 1 & 2 closed
	Flash BIOS voltage select 12V	JP5	Pins 2 & 3 closed
»	CMOS memory normal operation	JP6	Pins 1 & 2 closed
	CMOS memory clear	JP6	Pins 2 & 3 closed
	On board sound enabled	JP9	Closed
	On board sound disabled	JP9	Open

DIMM CONFIGURATION

Size	Bank 0	Bank 1
8MB	(1) 1M x 64	None
16MB	(1) 1M x 64	(1) 1M x 64
16MB	(1) 2M x 64	None
24MB	(1) 2M x 64	(1) 1M x 64
32MB	(1) 2M x 64	(1) 2M x 64
32MB	(1) 4M x 64	None
40MB	(1) 4M x 64	(1) 1M x 64
48MB	(1) 4M x 64	(1) 2M x 64
64MB	(1) 4M x 64	(1) 4M x 64
64MB	(1) 8M x 64	None
72MB	(1) 8M x 64	(1) 1M x 64
80MB	(1) 8M x 64	(1) 2M x 64
96MB	(1) 8M x 64	(1) 4M x 64
128MB	(1) 8M x 64	(1) 8M x 64
128MB	(1) 16M x 64	None
136MB	(1) 16M x 64	(1) 1M x 64
144MB	(1) 16M x 64	(1) 2M x 64
160MB	(1) 16M x 64	(1) 4M x 64
192MB	(1) 16M x 64	(1) 8M x 64
256MB	(1) 16M x 64	(1) 16M x 64
256MB*	(1) 32M x 64	None
264MB*	(1) 32M x 64	(1) 1M x 64
272MB*	(1) 32M x 64	(1) 2M x 64
288MB*	(1) 32M x 64	(1) 4M x 64
320MB*	(1) 32M x 64	(1) 8M x 64
384MB*	(1) 32M x 64	(1) 16M x 64

512MB*

(1) 32M x 64

(1) 32M x 64

Note: Board supports EDO & SDRAM memory. Maximum SDRAM is 256MB. Maximum EDO is 512MB

*Note: Memory configuration requires EDO memory.

VIDEO RAM CONFIGURATION

Size	ON BOARD SGRAM	J4
2MB	2MB	Not installed
4MB	2MB	2MB SGRAM
4MB	4MB	Not Installed
8MB	4MB	4MB SGRAM

CACHE CONFIGURATION

Note: 256KB/512KB cache is located on the Pentium II CPUs.

CPU SPEED SELECTION

CPU speed	Clock speed	Multiplier	S1/1 & 2	S1/3 & 4	S1/5 & 6	S2/1 & 2	S2/3 & 4	S2/5 & 6
233MHz	66MHz	3.5x	Closed	Open	Open	Open	Open	Open
266MHz	66MHz	4x	Open	Closed	Closed	Open	Open	Open
300MHz	66MHz	4.5x	Open	Closed	Open	Open	Open	Open
333MHz	66MHz	5x	Open	Open	Closed	Open	Open	Open
366MHz	66MHz	5.5x	Open	Open	Open	Open	Open	Open

POWER SUPPLY SELECTION

Setting	JP3	JP4	JP7
AT power	Open	Closed	Pins 2 & 3 closed
ATX power, Power-on keyboard disabled	Closed	Open	Pins 2 & 3 closed

ATX power, Power-on keyboard enabled

Open

Open

Pins 1 & 2 closed

ETHERNET SELECTION

Setting	JP8	JP10
On board Ethernet enabled	Closed	Closed
On board Ethernet disabled	Open	Open