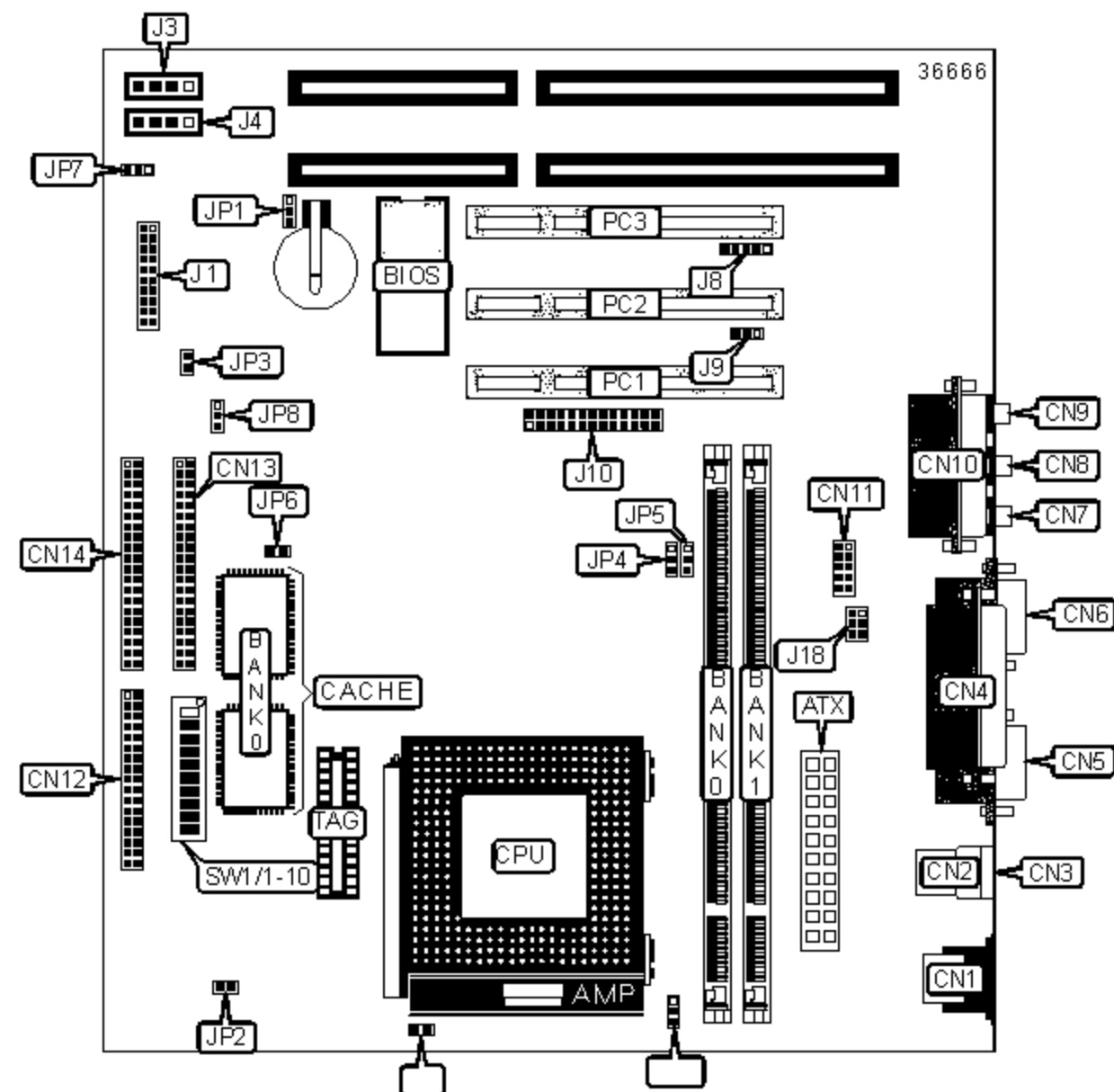


GEMLIGHT COMPUTER LTD.

GMB-P57SAX (VER. 3.00)

Device Type	Mainboard
Processor	CX 6X86L/CX 6X86MX/IBM 6X86MX/CX MII/IDT C6/AM K5/AM K6/AM K6-2/Pentium/Pentium MMX
Processor Speed	90/100/110/120/133/150/166/200/233/250/266/300/333MHz
Chip Set	SIS
Video Chip Set	SIS
Audio Chip Set	ESS
Maximum Onboard Memory	256MB (EDO & SDRAM supported)
Maximum Video Memory	Unidentified
Cache	512KB
BIOS	Award
Dimensions	245mm x 210mm
I/O Options	32-bit PCI slots (3), floppy drive interface, game port, Green PC connector, IDE interfaces (2), parallel port, PS/2 mouse port, serial ports (2), VGA feature connector, VGA port, IR connector, USB ports (2), ATX power connector, line in, line out, microphone in, audio in - CD-ROMs (2), Wake-on-LAN connector, TV-out connector



Purpose	Location	Purpose	Location
ATX power connector	ATX	Power LED & Keylock	J1/Pins 1, 3, 5, 7 & 9
PS/2 mouse port	CN1	PC speaker	J1/Pins 13, 15, 17 & 19
USB port 1	CN2	Reset switch	J1/Pins 18 & 20
USB port 2	CN3	Power switch	J1/Pins 14 & 16
Parallel port	CN4	Green PC switch	J1/Pins 10 & 12
Serial port 1	CN5	Green PC LED	J1/Pins 6 & 8
VGA port	CN6	IDE interface LED	J1/Pins 2 & 4
Line out	CN7	Audio in - CD-ROM	J3
Line in	CN8	Audio in - CD-ROM	J4
Microphone in	CN9	IR connector	J8
Game port	CN10	Wake-on-Modem connector	J9
Serial interface 2	CN11	VGA feature connector	J10
Floppy drive interface	CN12	CPU fan power	J17
IDE interface 1	CN13	TV-out connector	J18
IDE interface 2	CN14	32-bit PCI slots	PC1 - PC3

USER CONFIGURABLE SETTINGS

Function		Label	Position
	Flash BIOS voltage select 5V	JP1	Pins 2 & 3 closed
	Flash BIOS voltage select 12V	JP1	Pins 1 & 2 closed
»	Factory configured - do not alter	JP6	Off
»	Factory configured - do not alter	JP7	Unidentified
»	CMOS memory normal operation	JP8	Pins 1 & 2 closed
	CMOS memory clear	JP8	Pins 2 & 3 closed
	On board sound enabled	JP3	Closed
	On board sound disabled	JP3	Open

DIMM CONFIGURATION

Size	Bank 0	Bank 1
8MB	(1) 1M x 64	None
16MB	(1) 1M x 64	(1) 1M x 64
16MB	(1) 2M x 64	None
24MB	(1) 2M x 64	(1) 1M x 64
32MB	(1) 2M x 64	(1) 2M x 64
32MB	(1) 4M x 64	None
40MB	(1) 4M x 64	(1) 1M x 64
48MB	(1) 4M x 64	(1) 2M x 64
64MB	(1) 4M x 64	(1) 4M x 64
64MB	(1) 8M x 64	None
72MB	(1) 8M x 64	(1) 1M x 64
80MB	(1) 8M x 64	(1) 2M x 64
96MB	(1) 8M x 64	(1) 4M x 64
128MB	(1) 8M x 64	(1) 8M x 64
128MB	(1) 16M x 64	None
136MB	(1) 16M x 64	(1) 1M x 64
144MB	(1) 16M x 64	(1) 2M x 64
160MB	(1) 16M x 64	(1) 4M x 64
192MB	(1) 16M x 64	(1) 8M x 64
256MB	(1) 16M x 64	(1) 16M x 64

Note: Board supports EDO & SDRAM memory.

CPU SPEED SELECTION (CX 6X86L)

CPU speed	Clock speed	Multiplier	SW1/5	SW1/6	SW1/7	SW1/8	SW1/9	SW1/10
150MHz	60MHz	2x	On	Off	Off	On	Off	Off
166MHz	66MHz	2x	On	Off	Off	Off	Off	Off

200MHz	75MHz	2x	On	Off	Off	Off	On	On
--------	-------	----	----	-----	-----	-----	----	----

CPU SPEED SELECTION (CX 6X86MX)

CPU speed	Clock speed	Multiplier	SW1/5	SW1/6	SW1/7	SW1/8	SW1/9	SW1/10
166MHz	60MHz	2.5x	On	On	Off	On	Off	Off
200MHz	75MHz	2x	On	Off	Off	Off	On	On
200MHz	66MHz	2.5x	On	On	Off	Off	Off	Off
233MHz	75MHz	2.5x	On	On	Off	Off	On	On
233MHz	66MHz	3x	Off	On	Off	Off	Off	Off

CPU SPEED SELECTION (CX MII)

CPU speed	Clock speed	Multiplier	SW1/5	SW1/6	SW1/7	SW1/8	SW1/9	SW1/10
300MHz	75MHz	3x	Off	On	Off	Off	On	On
300MHz	66MHz	3.5x	Off	Off	Off	Off	Off	Off

CPU SPEED SELECTION (IBM 6X86MX)

CPU speed	Clock speed	Multiplier	SW1/5	SW1/6	SW1/7	SW1/8	SW1/9	SW1/10
266MHz	83MHz	2.5x	On	On	Off	On	On	On
300MHz	75MHz	3x	Off	On	Off	Off	On	On
300MHz	66MHz	3.5x	Off	Off	Off	Off	Off	Off
333MHz	83MHz	3x	Off	On	Off	On	On	On

CPU SPEED SELECTION (AM K5)

CPU speed	Clock speed	Multiplier	SW1/5	SW1/6	SW1/7	SW1/8	SW1/9	SW1/10
120MHz	60MHz	2x	On	Off	Off	On	Off	Off
133MHz	66MHz	2x	On	Off	Off	Off	Off	Off
166MHz	66MHz	2.5x	On	On	Off	Off	Off	Off

CPU SPEED SELECTION (AM K6)

CPU speed	Clock speed	Multiplier	SW1/5	SW1/6	SW1/7	SW1/8	SW1/9	SW1/10
166MHz	66MHz	2.5x	On	On	Off	Off	Off	Off
200MHz	66MHz	3x	Off	On	Off	Off	Off	Off
233MHz	66MHz	3.5x	Off	Off	Off	Off	Off	Off
266MHz	66MHz	4x	On	Off	On	Off	Off	Off
300MHz	66MHz	4.5x	On	On	On	Off	Off	Off

CPU SPEED SELECTION (AM K6-2)

CPU speed	Clock speed	Multiplier	SW1/5	SW1/6	SW1/7	SW1/8	SW1/9	SW1/10
266MHz	66MHz	4x	On	Off	On	Off	Off	Off

CPU SPEED SELECTION (IDT C6)

CPU speed	Clock speed	Multiplier	SW1/5	SW1/6	SW1/7	SW1/8	SW1/9	SW1/10
180MHz	60MHz	3x	Off	On	Off	On	Off	Off
200MHz	66MHz	3x	Off	On	Off	Off	Off	Off

CPU SPEED SELECTION (PENTIUM)

CPU speed	Clock speed	Multiplier	SW1/5	SW1/6	SW1/7	SW1/8	SW1/9	SW1/10
90MHz	60MHz	1.5x	Off	Off	Off	On	Off	Off
100MHz	66MHz	1.5x	Off	Off	Off	Off	Off	Off
120MHz	60MHz	2x	On	Off	Off	On	Off	Off
133MHz	66MHz	2x	On	Off	Off	Off	Off	Off
150MHz	60MHz	2.5x	On	On	Off	On	Off	Off
166MHz	66MHz	2.5x	On	On	Off	Off	Off	Off
200MHz	66MHz	3x	Off	On	Off	Off	Off	Off

CPU SPEED SELECTION (PENTIUM MMX)

CPU speed	Clock speed	Multiplier	SW1/5	SW1/6	SW1/7	SW1/8	SW1/9	SW1/10
166MHz	66MHz	2.5x	On	On	Off	Off	Off	Off
200MHz	66MHz	3x	Off	On	Off	Off	Off	Off
233MHz	66MHz	3.5x	Off	Off	Off	Off	Off	Off

VIDEO SELECTION

Setting	JP4	JP5
On board VGA enabled	Pins 2 & 3 closed	Pins 1 & 2 closed
On board VGA disabled	Pins 1 & 2 closed	Pins 2 & 3 closed

CPU VOLTAGE SELECTION

Voltage	SW1/1	SW1/2	SW1/3	SW1/4	JP2	S1
2.2V	Off	On	Off	Off	Open	Open
2.8V	Off	Off	Off	On	Open	Open
2.9V	On	Off	Off	On	Open	Open
3.2V	Off	Off	On	On	Open	Open
3.3V	On	Off	On	On	Closed	Closed
3.5V	On	On	On	On	Closed	Closed