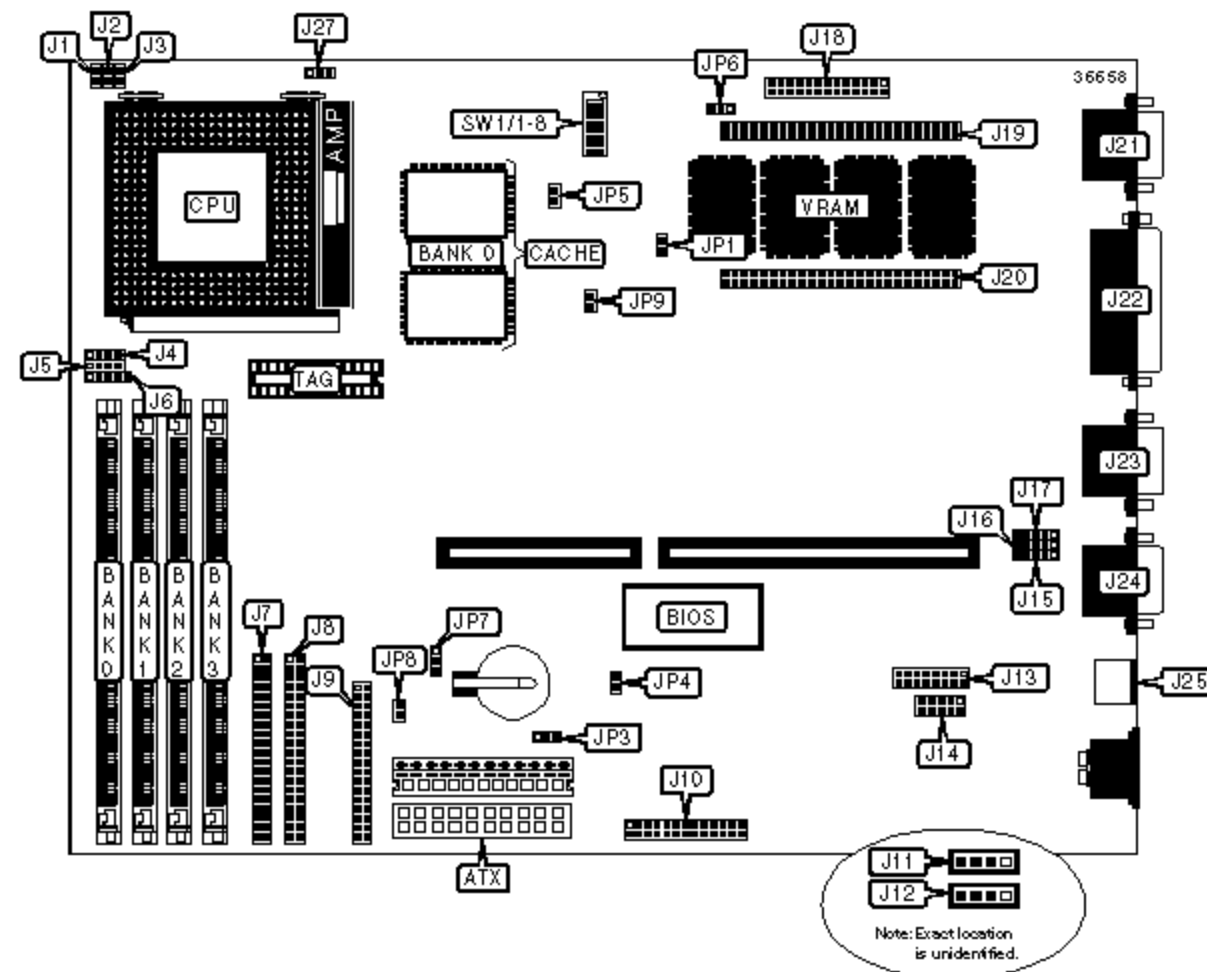


VEXTREC TECHNOLOGY INC.

GMB-P57IPA (VER. 1.22)

Device Type	Mainboard
Processor	CX 6X86/CX 6X86L/CX 6X86MX/IBM 6X86MX/CX M2/IDT WinCHIP/AM K5/AM K6/Pentium/Pentium MMX
Processor Speed	90/100/110/120/133/150/166/180/200/225/233/240/266/300MHz
Chip Set	Intel 430TX
Video Chip Set	S3
Audio Chip Set	ESS
Maximum Onboard Memory	256MB (EDO supported)
Maximum Video Memory	4MB
Cache	512KB
BIOS	Award
Dimensions	200mm x 248mm
I/O Options	EISA extension slot, floppy drive interface, Green PC connector, IDE interfaces (2), parallel port, PS/2 mouse port, serial ports (2), VGA feature connector, VGA port, IR connector, USB connector (2), ATX power connector, audio in - CD-ROMs (2), wavetable connector



CONNECTIONS

Purpose	Location	Purpose	Location
ATX power connector	ATX	Audio extension card connector	J14
Reset switch	J1	IR connector	J15

Green PC connector	J2	USB connector 1	J16
Green PC LED	J3	USB connector 2	J17
PC speaker	J4	Feature connector	J18
IDE interface LED	J5	Video memory board connector	J19
Power LED & Keylock	J6	Video memor board connector	J20
IDE interface 1	J7	VGA port	J21
IDE interface 2	J8	Parallel port	J22
Floppy drive interface	J9	Serial port 1	J23
Wavetable connector	J10	Serial port 2	J24
Audio in - CD-ROM (Sony)	J11	PS/2 mouse port	J25
Audio in - CD-ROM (Mitsumi)	J12	CPU fan power connector	J27
Audio extension card connector	J13		

USER CONFIGURABLE SETTINGS

Function		Label	Position
	On board video enabled	JP1	Closed
	On bard video disabled	JP1	Open
	Flash BIOS voltage select 5V	JP3	Pins 2 & 3 closed
	Flash BIOS voltage select 12V	JP3	Pins 1 & 2 closed
	On board sound enabled	JP4	Closed
	On board sound disabled	JP4	Open
»	Factory configured - do not alter	JP6	Pins 2 & 3 closed
»	CMOS normal operation	JP7	Pins 1 & 2 closed
	CMOS clear memory	JP7	Pins 2 & 3 closed

SIMM CONFIGURATION (NEEDING 256MB)

Size	Bank 0	Bank 1
8MB	(2) 1M x 36	None

speed	speed		SW1/3	SW1/4	SW1/5	SW1/6	SW1/7	SW1/8
150MHz	60MHz	2x	On	Off	Off	On	Off	Off
166MHz	66MHz	2x	On	Off	Off	Off	On	Off
200MHz	75MHz	2x	On	Off	Off	Off	Off	On

CPU SPEED SELECTION (CX 6X86MX)

CPU speed	Clock speed	Multiplier	SW1/3	SW1/4	SW1/5	SW1/6	SW1/7	SW1/8
166MHz	60MHz	2.5x	On	On	Off	On	Off	Off
200MHz	75MHz	2x	On	Off	Off	Off	Off	On

CPU SPEED SELECTION (CX M2)

CPU speed	Clock speed	Multiplier	SW1/3	SW1/4	SW1/5	SW1/6	SW1/7	SW1/8
300MHz	75MHz	3x	Off	On	Off	Off	Off	On
300MHz	66MHz	3.5x	Off	Off	Off	Off	On	Off

CPU SPEED SELECTION (IBM 6X86MX)

CPU speed	Clock speed	Multiplier	SW1/3	SW1/4	SW1/5	SW1/6	SW1/7	SW1/8
300MHz	75MHz	3x	Off	On	Off	Off	Off	On
300MHz	66MHz	3.5x	Off	Off	Off	Off	On	Off

CPU SPEED SELECTION (AM K5)

CPU speed	Clock speed	Multiplier	SW1/3	SW1/4	SW1/5	SW1/6	SW1/7	SW1/8
120MHz	60MHz	2x	On	Off	Off	On	Off	Off
133MHz	66MHz	2x	On	Off	Off	Off	On	Off
166MHz	66MHz	2.5x	On	On	Off	Off	On	Off

CPU speed	Clock speed	Multiplier	SW1/3	SW1/4	SW1/5	SW1/6	SW1/7	SW1/8
166MHz	66MHz	2.5x	On	On	Off	Off	On	Off
200MHz	66MHz	3x	Off	On	Off	Off	On	Off
233MHz	66MHz	3.5x	Off	Off	Off	Off	On	Off

CPU VOLTAGE SELECTION			
Voltage	SW1/1	SW1/2	JP5
2.2V	Off	On	Closed
2.8V	Off	Off	Closed
2.9V	On	Off	Closed
3.2V	Off	Off	Open
3.3V	Off	On	Open
3.5V	On	On	Open
Auto Detect	Off	Off	Open