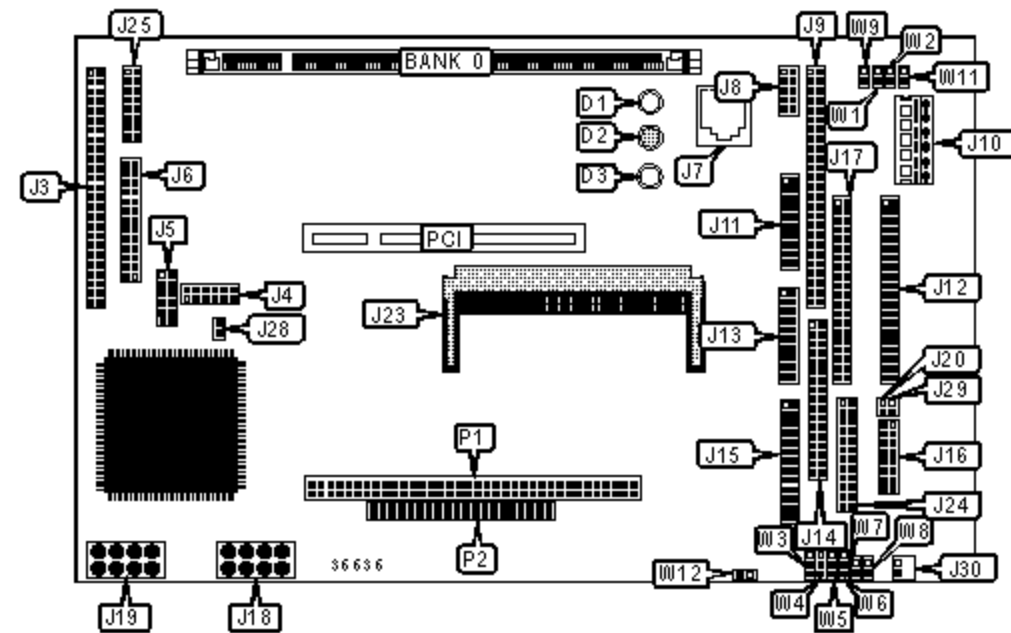


AMPRO COMPUTERS, INC.

LITTLE BOARD/P5X

Device Type	Mainboard
Processor	Pentium
Processor Speed	133/166/200/233/266MHz
Chip Set	Unidentified
Maximum Onboard Memory	256MB (EDO & SDRAM supported)
Cache	512KB
BIOS	Unidentified
Dimensions	146mm x 203mm
I/O Options (backplane)	32-bit PCI slot (1), Ethernet 100BaseT connector, floppy drive interface, IDE interfaces (2), Ultra SCSI interface, VGA interface, parallel port, PS/2 mouse port, serial ports (4), IR connector, USB connectors (2), PC/104 connectors (2)



CONNECTIONS

Purpose	Location	Purpose	Location
Flat panel video connector	J3	CPU power supply	J19
Vee bias supply connector	J4	Serial interface 1 (RS-485)	J20
Analog video connector	J5	Ethernet connection	J22
ZV port interface (Video Zoom)	J6	Compact Flash BIOS	J23
Ethernet RJ-45 connector	J7	Laptop lid switch simulator	J24/pins 1,2,3
Ethernet connector	J8	IR connector	J24/pins 4,5,6,7,8
Ultra SCSI interface	J9	PS/2 Mouse port	J24/pins 9,10,11,12
Power connector	J10	USB connector 1	J24/pins 15,17,19,21,23

Serial port 1 & 2	J11	USB connector 2	J24/pins 16,18,20,22,24
IDE interface 1	J12	Flat Panel Video connector	J25
Serial port 3 & 4	J13	CPU fan power	J28
Floppy drive interface	J14	Serial port 3 (RS-485)	J29
Parallel port	J15	External power management option	J30
Utility connector 1	J16	PC/104 connector	P1
IDE interface 2	J17	PC/104 connector	P2
CPU power supply	J18	32-bit PCI slot	PC1

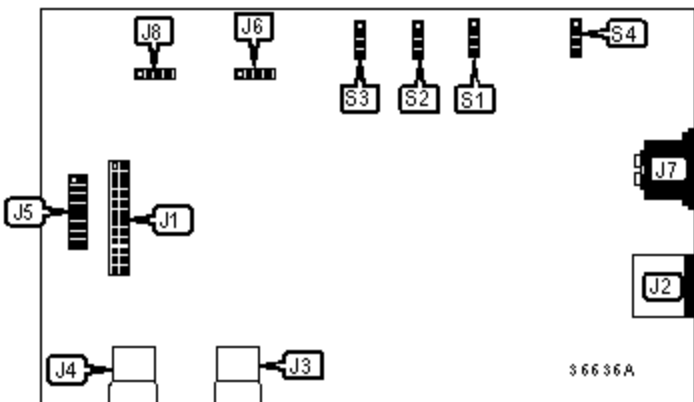
USER CONFIGURABLE SETTINGS

Function		Label	Position
»	Serial 1 RS-485 termination disabled	W1	Open
	Serial 1 RS-485 termination enabled	W1	Closed
»	SCSI TERMPWR disabled	W2	Open
	SCSI TERMPWR enabled	W2	Closed
»	Factory configured - do not alter	W3	Unidentified
»	Factory configured - do not alter	W4	Unidentified
»	Factory configured - do not alter	W5	Unidentified
»	Factory configured - do not alter	W6	Unidentified
»	Serial 3 RS-485 termination disabled	W7	Open
	Serial 3 RS-485 termination enabled	W7	Closed
»	Watchdog Timer reset disabled	W8	Open
	Watchdog Timer reset enabled	W8	Closed
»	Factory configured - do not alter	W9	Open
»	External BIOS board connection enabled	W10	Closed
	External BIOS board connection disabled	W10	Open
»	Flash BIOS programming power enabled	W11	Closed

	Flash BIOS programming power disabled	W11	Open
»	Compact Flash IDE master	W12	Closed
	Compact Flash IDE slave	W12	Open

DIMM CONFIGURATION	
Size	Bank 0
16MB	(1) 2M x 64
32MB	(1) 4M x 64
64MB	(1) 8M x 64
128MB	(1) 16M x 64
256MB	(1) 32M x 64

ETHERNET INDICATOR LEDS			
LED	Color	Ethernet status	Condition
D1	Yellow	On	Data is being received.
D1	Yellow	Off	Data is not being received.
D2	Red	On	Data is being transmitted.
D2	Red	Off	Data is not being transmitted.
D3	Green	On	UTP link is good.
D3	Green	Off	UTP link is broken.



I/O Development Board

CONNECTIONS

Purpose	Location	Purpose	Location
Utility connector 1 to P5x via J16	J1	Utility connector 2 to P5x via J24	J5
PS/2 Mouse port	J2	Power connection	J6
USB port 1	J3	Keyboard port	J7
USB port 2	J4	Reserved	J8

USER CONFIGURABLE SETTINGS

Function	Label	Position
Simulates laptop lid closure	S1	Unidentified
Power On/Off button switch	S2	Unidentified
Simulate low-battery condition	S3	Unidentified
Reset signal to Little Board	S4	Unidentified