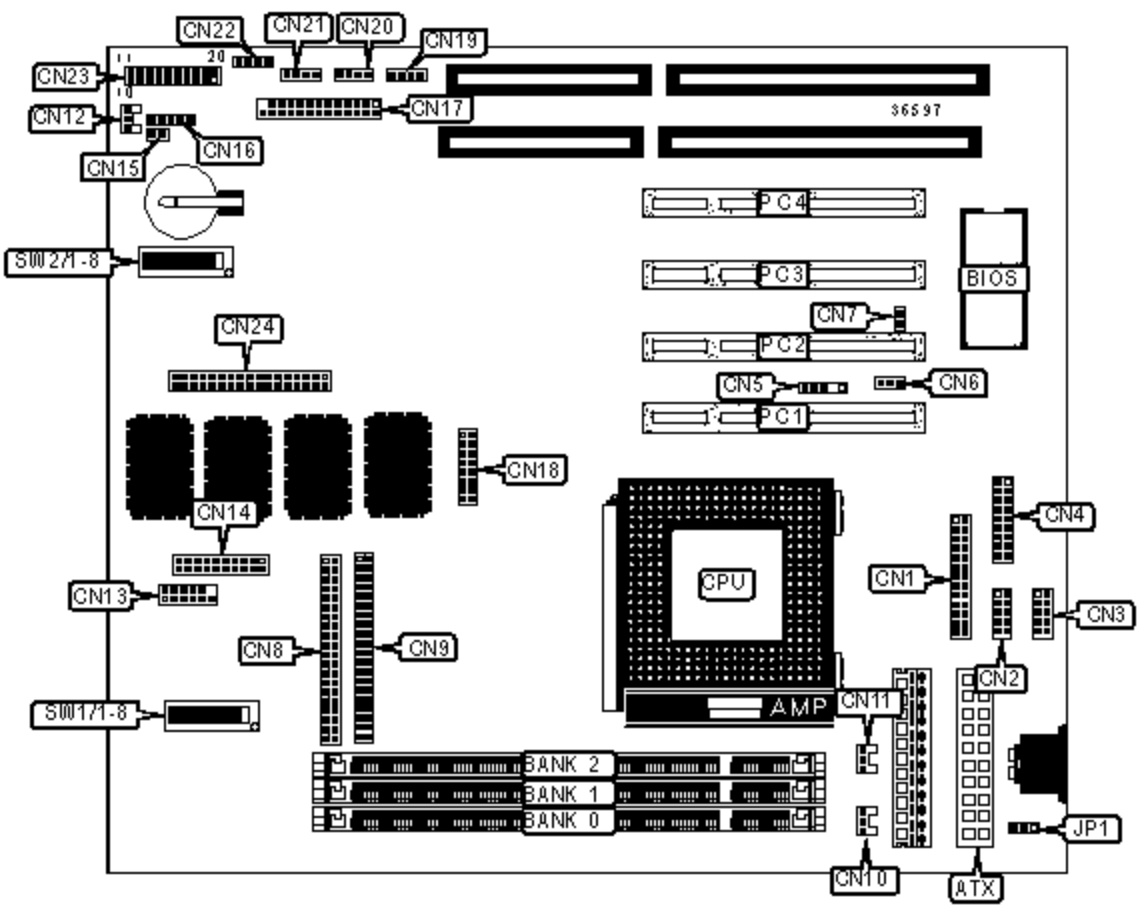


ASUS COMPUTER INTERNATIONAL

MES-B (REV. 1.01)

Device Type	Mainboard
Processor	Celeron
Processor Speed	300/333/366/400/433/466/500MHz
Chip Set	SIS 620
Video Chip Set	SIS
Audio Chip Set	ESS
Maximum Onboard Memory	768MB (SDRAM supported)
Maximum Video Memory	8MB
Maximum Audio Memory	Unidentified
Cache	0/128KB (located on the CPU)
BIOS	Award
Dimensions	244mm x 220mm
I/O Options	32-bit PCI slots (4), floppy drive interface, game/MIDI interface, green PC connector, IDE interfaces (2), PS/2 mouse interface, serial interfaces (2), VGA interface, IR connector, USB connectors (2), ATX power connector, line in interface, line out interface, microphone in, audio in - CD-ROMs (2), Wake on LAN connector, Wake on Ring connector, LCD interface



CONNECTIONS			
Purpose	Location	Purpose	Location
ATX power connector	ATX	IR connector	CN16
Parallel port interface	CN1	Audio header interface	CN17
Serial interface 2	CN2	VGA header interface	CN18

Serial interface 1	CN3	Audio in - Modem	CN19
USB/IR/Mouse interface	CN4	Audio in - AUX	CN20
SMBus connector	CN5	Audio in - CD ROM 1	CN21
Wake on LAN connector	CN6	Audio in - CD ROM 2	CN22
Wake on ring connector	CN7	Power LED & keylock	CN23/Pins 1-5
IDE interface 1	CN8	Speaker	CN23/Pins 7-10
IDE interface 2	CN9	Reset switch	CN23/Pins 11 & 12
CPU fan power	CN10	ATX power switch	CN23/Pins 14 & 15
Power fan	CN11	Green PC connector	CN23/Pins 16 & 17
Chassis fan power	CN12	Message LED	CN23/Pins 18 & 19
TV out connector	CN13	Floppy drive interface	CN24
LCD connector	CN14	32-bit PCI slots	PC1 - PC4
IDE interface LED	CN15		

USER CONFIGURABLE SETTINGS

Function		Label	Position
»	Keyboard power on disabled	JP1	Pins 1 & 2 Closed
	Keyboard power on enabled	JP1	Pins 2 & 3 Closed
	Asynchronous clock frequency	SW1/5	Off
	Synchronous clock frequency	SW1/5	On
»	CPU core voltage normal	SW1/8	Off
	CPU core voltage +0.1V	SW1/8	On
»	On board VGA enabled	SW2/5	Off
	On board VGA disabled	SW2/5	On
»	Display memory UMA	SW2/6	Off
	Display memory non-UMA	SW2/6	On

»	LCD disabled	SW2/7	Off
	LCD enabled	SW2/7	On
	On board audio enabled	SW2/8	On
	On board audio disabled	SW2/8	Off

DIMM CONFIGURATION

Size	Bank 0	Bank 1	Bank 2
8MB	(1) 1M x 64	None	None
16MB	(1) 1M x 64	(1) 1M x 64	None
16MB	(1) 2M x 64	None	None
24MB	(1) 1M x 64	(1) 1M x 64	(1) 1M x 64
32MB	(1) 2M x 64	(1) 2M x 64	None
32MB	(1) 4M x 64	None	None
32MB	(1) 2M x 64	(1) 1M x 64	(1) 1M x 64
48MB	(1) 2M x 64	(1) 2M x 64	(1) 2M x 64
48MB	(1) 4M x 64	(1) 1M x 64	(1) 1M x 64
64MB	(1) 4M x 64	(1) 4M x 64	None
64MB	(1) 8M x 64	None	None
64MB	(1) 4M x 64	(1) 2M x 64	(1) 2M x 64
80MB	(1) 8M x 64	(1) 1M x 64	(1) 1M x 64
96MB	(1) 4M x 64	(1) 4M x 64	(1) 4M x 64
96MB	(1) 8M x 64	(1) 2M x 64	(1) 2M x 64
128MB	(1) 8M x 64	(1) 8M x 64	None
128MB	(1) 16M x 64	None	None
128MB	(1) 8M x 64	(1) 4M x 64	(1) 4M x 64
144MB	(1) 16M x 64	(1) 1M x 64	(1) 1M x 64
160MB	(1) 16M x 64	(1) 2M x 64	(1) 2M x 64
192MB	(1) 8M x 64	(1) 8M x 64	(1) 8M x 64

192MB	(1) 16M x 64	(1) 4M x 64	(1) 4M x 64
256MB	(1) 16M x 64	(1) 16M x 64	None
256MB	(1) 32M x 64	None	None
256MB	(1) 16M x 64	(1) 8M x 64	(1) 8M x 64
272MB	(1) 32M x 64	(1) 1M x 64	(1) 1M x 64
288MB	(1) 32M x 64	(1) 2M x 64	(1) 2M x 64
320MB	(1) 32M x 64	(1) 4M x 64	(1) 4M x 64
384MB	(1) 16M x 64	(1) 16M x 64	(1) 16M x 64
384MB	(1) 32M x 64	(1) 8M x 64	(1) 8M x 64
512MB	(1) 32M x 64	(1) 32M x 64	None
512MB	(1) 32M x 64	(1) 16M x 64	(1) 16M x 64
768MB	(1) 32M x 64	(1) 32M x 64	(1) 32M x 64

Note: Board supports SDRAM memory.

CACHE CONFIGURATION

Note: 128KB cache is located on the Celeron 300 & 333A CPU.

CPU SPEED SELECTION

CPU speed	Clock speed	Multiplier	SW1/1	SW1/2	SW1/3	SW1/4
300MHz	66MHz	4.5x	On	On	On	On
333MHz	66MHz	5x	On	On	On	On
366MHz	66MHz	5.5x	On	On	On	On
400MHz	66MHz	6x	On	On	On	On
433MHz	66MHz	6.5x	On	On	On	On
466MHz	66MHz	7x	On	On	On	On
500MHz	66MHz	7.5x	On	On	On	On

CPU SPEED SELECTION

CPU speed	Clock speed	Multiplier	SW2/1	SW2/2	SW2/3	SW2/4
300MHz	66MHz	4.5x	Off	On	On	Off
333MHz	66MHz	5x	Off	On	Off	On
366MHz	66MHz	5.5x	Off	On	Off	Off
400MHz	66MHz	6x	On	Off	On	On
433MHz	66MHz	6.5x	On	Off	On	Off
466MHz	66MHz	7x	On	Off	Off	On
500MHz	66MHz	7.5x	On	Off	Off	Off

I/O VOLTAGE SETTINGS

Voltage		SW1/6	SW1/7
»	Normal	Off	Off
	+0.2V	On	Off
	+0.3V	On	On