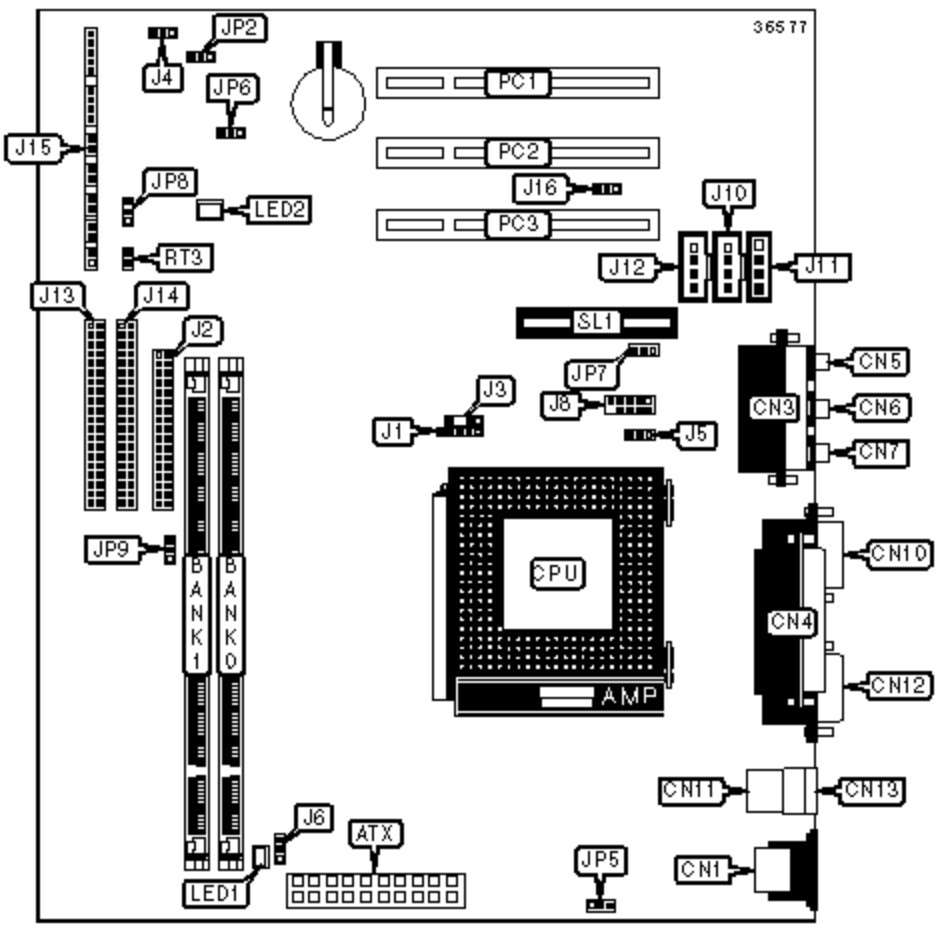


# DIAMOND FLOWER, INC.

## CW-35L (REV. A+)

<b>Device Type</b>	Mainboard
<b>Processor</b>	Celeron
<b>Processor Speed</b>	300A/333/366/400/433/466MHz
<b>Chip Set</b>	Intel 810-L
<b>Video Chip Set</b>	Unidentified
<b>Audio Chip Set</b>	Unidentified
<b>Maximum Onboard Memory</b>	512MB (SDRAM supported)
<b>Maximum Video Memory</b>	1MB (Shared from system memory)
<b>Maximum Audio Memory</b>	Unidentified
<b>Cache</b>	128KB (located on the CPU)
<b>BIOS</b>	Award
<b>Dimensions</b>	Unidentified
<b>I/O Options</b>	32-bit PCI slots (3), floppy drive interface, game/MIDI port, green PC connector, IDE interfaces (2), parallel port, PS/2 mouse port, serial port, serial interface, VGA port, riser slot, USB ports (2), IR connector, ATX power connector, line in, line out, microphone in, audio in - CD-ROMs (3)



### CONNECTIONS

Purpose	Location	Purpose	Location
ATX power connector	ATX	Serial interface	J8
PS/2 mouse port	CN1	CD-ROM audio in (Sony)	J10
Game/MIDI port	CN3	CD-ROM audio in (Mitsumi)	J11

Parallel port	CN4	CD-ROM audio in (Sony)	J12
Microphone in	CN5	IDE interface 1	J13
Line in	CN6	IDE interface 2	J14
Line out	CN7	IDE interface LED connector	J15/Pins 1 & 2
VGA port	CN10	Green PC LED connector	J15/Pins 3 & 4
USB port 1	CN11	Power switch connector	J15/Pins 5 & 6
Serial port	CN12	Green PC switch connector	J15/Pins 7 & 8
USB port 2	CN13	Reset switch connector	J15/Pins 9 & 10
IR connector	J1	PC speaker connector	J15/Pins 11 - 14
Floppy drive interface	J2	Power LED and keylock connector	J15/Pins 15 - 19
Chassis intrusion connector	J3	Wake-on-LAN connector	J16
Chassis fan power connector	J4	32-bit PCI slots	PC1 - PC3
CPU fan power connector	J5	Thermal connector	RT3
Power fan connector	J6	Audio/modem riser slot	SL1

### USER CONFIGURABLE SETTINGS

Function		Label	Position
»	CMOS memory normal operation	JP2	Pins 1 & 2 closed
	CMOS memory clear	JP2	Pins 2 & 3 closed
»	Wake-on-keyboard/mouse disabled	JP5	Pins 1 & 2 closed
	Wake-on-keyboard/mouse enabled	JP5	Pins 2 & 3 closed
»	Factory configured - do not alter	JP6	Pins 1 & 2 closed
»	Audio codec disabled	JP7	Pins 1 & 2 closed
	Audio codec enabled	JP7	Pins 2 & 3 closed
»	PC speaker enabled	JP8	Pins 2 & 3 closed
	External speaker enabled	JP8	Pins 1 & 2 closed

### DIMM CONFIGURATION

Size	Bank 0	Bank 1
16MB	(1) 2M x 64	None
32MB	(1) 4M x 64	None
32MB	(1) 2M x 64	(1) 2M x 64
48MB	(1) 4M x 64	(1) 2M x 64
64MB	(1) 8M x 64	None
64MB	(1) 4M x 64	(1) 4M x 64
80MB	(1) 8M x 64	(1) 2M x 64
96MB	(1) 8M x 64	(1) 4M x 64
128MB	(1) 16M x 64	None
128MB	(1) 8M x 64	(1) 8M x 64
144MB	(1) 16M x 64	(1) 2M x 64
160MB	(1) 16M x 64	(1) 4M x 64
192MB	(1) 16M x 64	(1) 8M x 64
256MB	(1) 16M x 64	(1) 16M x 64
256MB	(1) 32M x 64	None
272MB	(1) 32M x 64	(1) 2M x 64
288MB	(1) 32M x 64	(1) 4M x 64
320MB	(1) 32M x 64	(1) 8M x 64
384MB	(1) 32M x 64	(1) 16M x 64
512MB	(1) 32M x 64	(1) 32M x 64
Note: Board supports EDO & SDRAM memory.		

### CACHE CONFIGURATION

Note: 128KB cache is located on the Celeron 300A & 333 CPU.

### CPU SPEED SELECTION

Clock speed		JP9
»	Automatic speed selection	Pins 1 & 2 closed
	66MHZ	Pins 2 & 3 closed
	100MHz	Open

DIAGNOSTIC LED(S)			
LED	Color	Status	Condition
LED1	Unidentified	On	Power is on or PC is in suspend mode
LED1	Unidentified	Off	PC is in soft-off mode
LED2	Unidentified	On	Power is on, or PC is in suspend or soft-off mode
LED2	Unidentified	Off	Power is off, DIMM modules and expansion cards can be installed