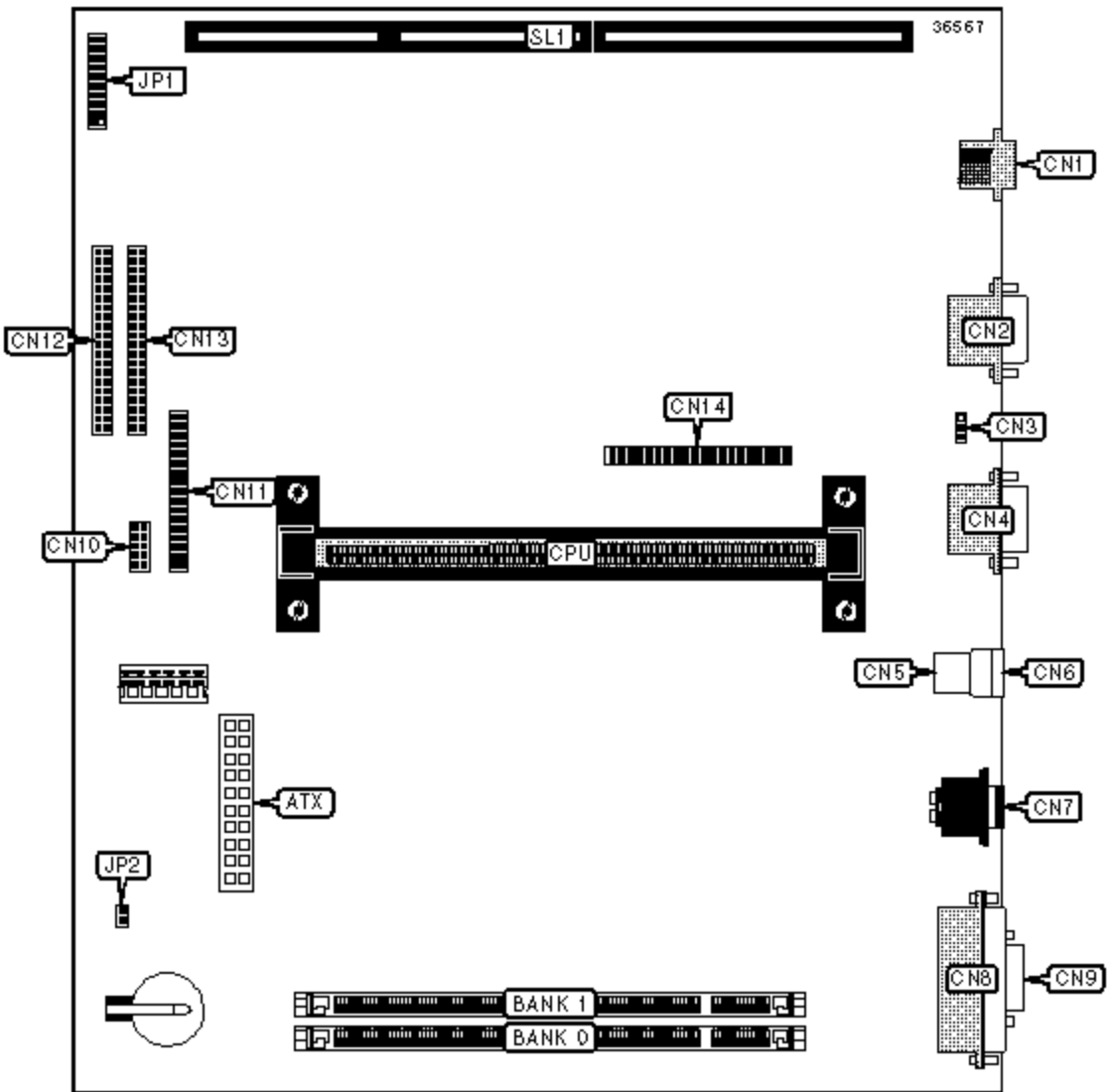


DELL COMPUTER CORPORATION

OPTIPLEX G1

Device Type	Mainboard
Processor	Pentium II
Processor Speed	266/300/333/350/400MHz
Chip Set	Intel 440BX
Video Chip Set	ATI
Maximum Onboard Memory	256MB
Maximum Video Memory	2MB
Cache	256/512KB (located on the Pentium II CPU)
BIOS	Unidentified
Dimensions	Unidentified
I/O Options	32-bit PCI slots (5), Ethernet 10BaseT connector, floppy drive interface, IDE interfaces (2), parallel port, PS/2 mouse port, serial ports (2), VGA port, riser slot, USB connectors (2), ATX power connector



CONNECTIONS			
Purpose	Location	Purpose	Location
ATX power connector	ATX	Serial port 1	CN9
RJ-45 UTP connector	CN1	Control panel connector	CN10

VGA port	CN2	Floppy drive interface	CN11
CPU fan power connector	CN3	IDE interface 1	CN12
Serial port 2	CN4	IDE interface 2	CN13
USB connector 1	CN5	Multimedia channel connector	CN14
USB connector 2	CN6	Chassis intrusion switch connector	JP2
PS/2 mouse port	CN7	Riser slot	SL1
Parallel port	CN8		

USER CONFIGURABLE SETTINGS

Function		Label	Position
»	Password feature enabled	JP1/Pins 1 & 2	Closed
	Password feature disabled	JP1/Pins 1 & 2	Open
»	Factory configured - do not alter	JP1/Pins 3 & 4	Open
»	External system clock set to 100MHz	JP1/Pins 5 & 6	Open
	External system clock set to 66MHz	JP1/Pins 5 & 6	Closed
»	Factory configured - do not alter	JP1/Pins 19 & 20	Open

DIMM CONFIGURATION

Size	Bank 0	Bank 1
32MB	(1) 4M x 64	None
64MB	(1) 8M x 64	None
64MB	(1) 4M x 64	(1) 4M x 64
96MB	(1) 8M x 64	(1) 4M x 64
128MB	(1) 16M x 64	None
128MB	(1) 8M x 64	(1) 8M x 64
160MB	(1) 16M x 64	(1) 4M x 64
192MB	(1) 16M x 64	(1) 8M x 64

256MB

(1) 16M x 64

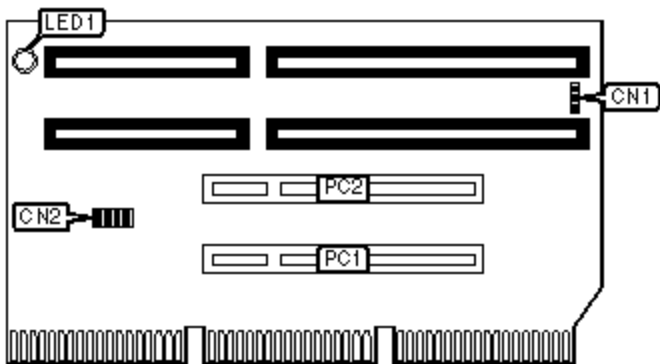
(1) 16M x 64

CACHE CONFIGURATION

Note: 256KB/512KB cache is located on the Pentium II CPU.

CPU SPEED SELECTION

Speed	JP1/Pins 7 & 8	JP1/Pins 9 & 10	JP1/Pins 11 & 12	JP1/Pins 13 & 14	JP1/Pins 15 & 16	JP1/Pins 17 & 18
266MHz	Closed	Open	Open	Open	Open	Open
300MHz	Open	Closed	Open	Open	Open	Open
333MHz	Open	Open	Closed	Open	Open	Open
350MHz	Open	Open	Open	Closed	Open	Open
400MHz	Open	Open	Open	Open	Closed	Open
450MHz	Open	Open	Open	Open	Open	Closed



RISER BOARD FOR LOW-PROFILE CASE

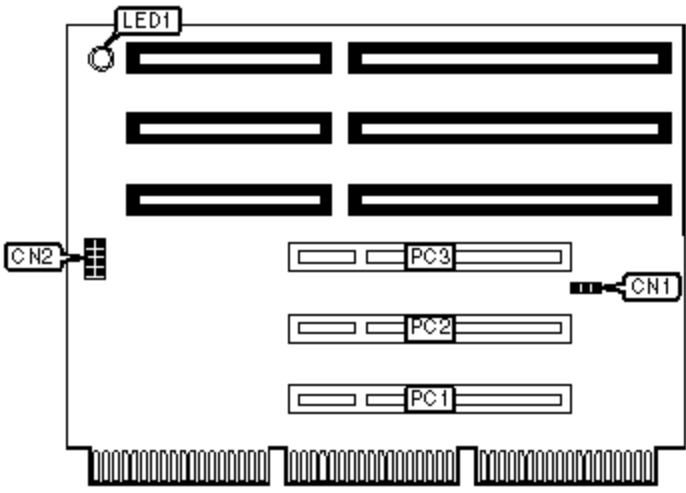
CONNECTIONS

Purpose	Location	Purpose	Location
NIC connector	CN1	32-bit PCI slots	PC1 - PC2
Hard drive LED connector	CN2		

DIAGNOSTIC LED(S)

LED	Color	Status	Condition

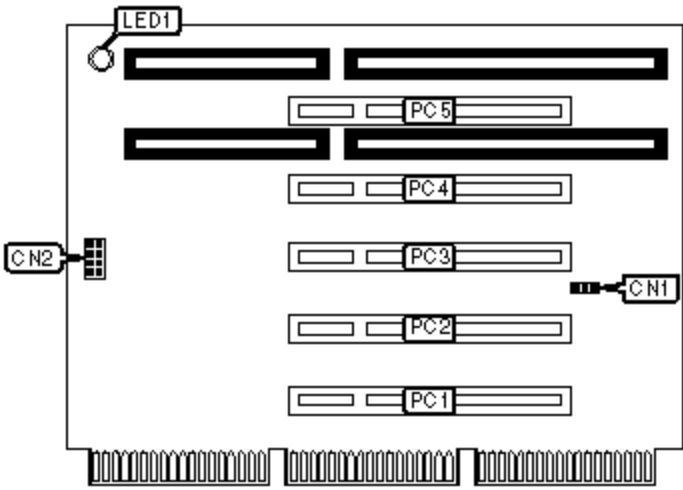
LED1	Unidentified	On	Riser board is receiving power
LED1	Unidentified	Off	Riser board is not receiving power



RISER BOARD FOR MIDSIZE CASE (VER.1)

CONNECTIONS			
Purpose	Location	Purpose	Location
NIC connector	CN1	32-bit PCI slots	PC1 - PC3
Hard drive LED connector	CN2		

DIAGNOSTIC LED(S)			
LED	Color	Status	Condition
LED1	Unidentified	On	Riser board is receiving power
LED1	Unidentified	Off	Riser board is not receiving power



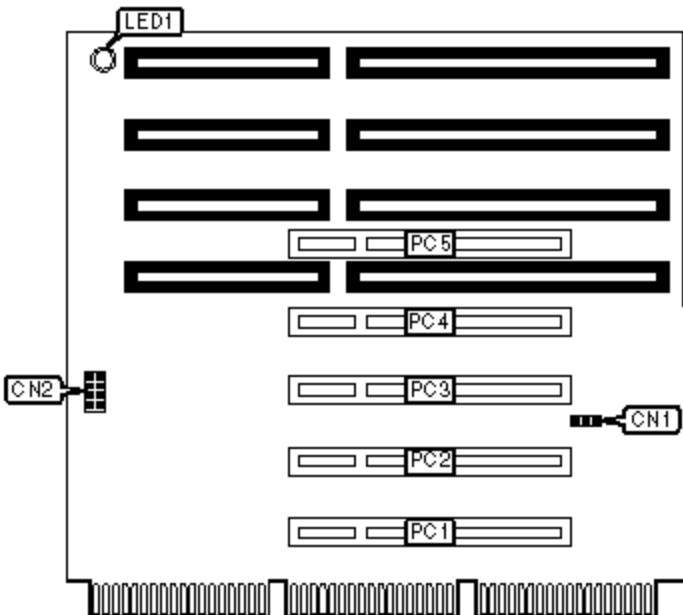
RISER BOARD FOR MIDSIZE CASE (VER.2)

CONNECTIONS

Purpose	Location	Purpose	Location
NIC connector	CN1	32-bit PCI slots	PC1 - PC5
Hard drive LED connector	CN2		

DIAGNOSTIC LED(S)

LED	Color	Status	Condition
LED1	Unidentified	On	Riser board is receiving power
LED1	Unidentified	Off	Riser board is not receiving power



RISER BOARD FOR MINI TOWER CASE

CONNECTIONS

Purpose	Location	Purpose	Location
NIC connector	CN1	32-bit PCI slots	PC1 - PC5
Hard drive LED connector	CN2		

DIAGNOSTIC LED(S)

LED	Color	Status	Condition
LED1	Unidentified	On	Riser board is receiving power
LED1	Unidentified	Off	Riser board is not receiving power