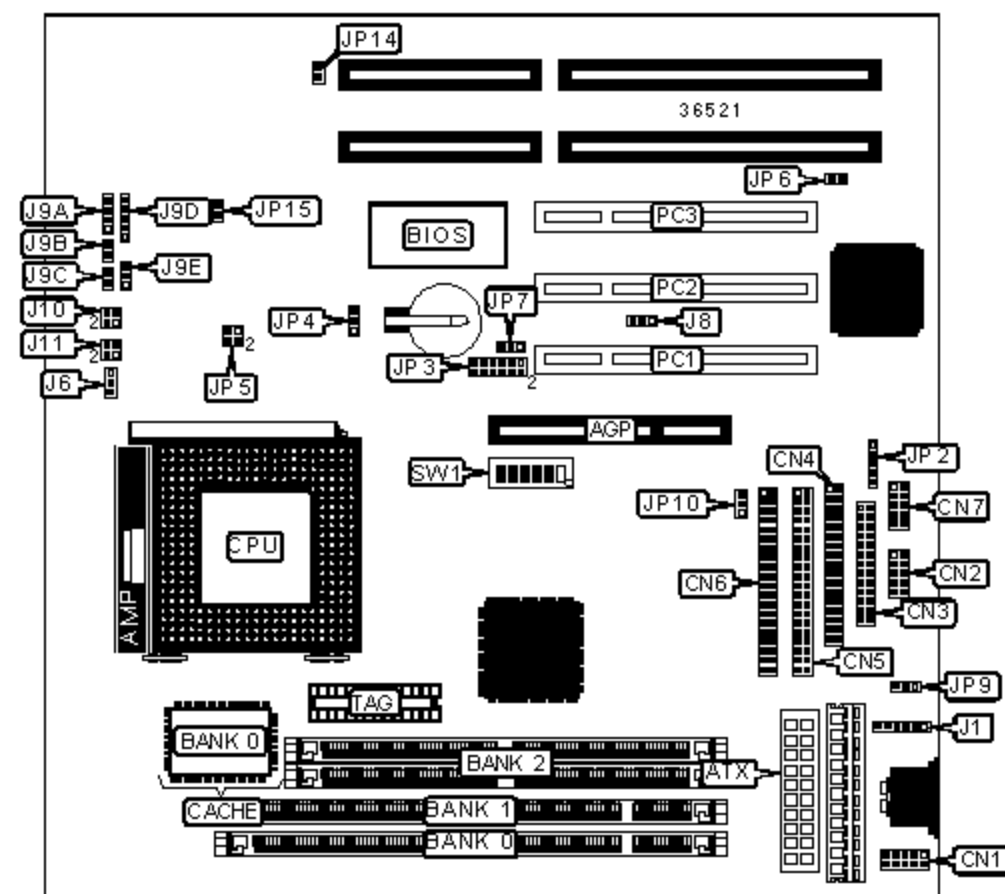


J-MARK COMPUTER CORPORATION

J-542B

Device Type	Mainboard
Processor	CX 6X86/IBM 6X86/CX 6X86MX/AM K5/AM K6/AM K6-2/ IDT C6/Pentium/Pentium MMX
Processor Speed	90/100/120/133/150/166/200/233/266/300/333/350MHz
Chip Set	ALI Aladdin
Maximum Onboard Memory	384MB (EDO & SDRAM supported)
Cache	512KB
BIOS	Unidentified
Dimensions	220mm x 210mm
I/O Options	32-bit PCI slots (3), floppy drive interface, green PC connector, IDE interfaces (2), parallel port, PS/2 mouse interface, serial ports (2), IR connector, USB connector, ATX power connector, AGP slot



CONNECTIONS

Purpose	Location	Purpose	Location
AGP slot	AGP	Chassis fan power	J8
ATX power connector	ATX	Speaker	J9A
USB connector	CN1	Reset switch	J9B
Serial port 1	CN2	Turbo LED	J9C

Parallel port	CN3	Power LED & keylock	J9D
Floppy drive interface	CN4	Turbo switch	J9E
IDE interface 2	CN5	Green PC connector	J10/pins 1 & 3
IDE interface 1	CN6	IDE interface LED	J10/pins 2 & 4
Serial port 2	CN7	Soft off power supply	J11/pins 2 & 4
PS/2 mouse interface	J1	IR connector	JP2
CPU fan power	J6	32-bit PCI slots	PC1 – PC3

USER CONFIGURABLE SETTINGS			
Function		Label	Position
»	CMOS memory normal operation	JP4	Pins 1 & 2 closed
	CMOS memory clear	JP4	Pins 2 & 3 closed
»	Factory configured - do not alter	JP6	Unidentified
»	Factory configured - do not alter	JP7	Unidentified
»	Factory configured - do not alter	JP9	Unidentified
»	Factory configured - do not alter	JP10	Unidentified
»	Factory configured - do not alter	JP14	Unidentified
»	Factory configured - do not alter	JP15	Unidentified

SIMM CONFIGURATION	
Size	Bank 2
16MB	(2) 2M x 36
32MB	(2) 4M x 36
64MB	(2) 8M x 36
128MB	(2) 16M x 36
Note: Board accepts EDO memory.	

DIMM CONFIGURATION		
Size	Bank 0	Bank 1

8MB	(1) 1M x 64	None
16MB	(1) 2M x 64	None
16MB	(1) 1M x 64	(1) 1M x 64
24MB	(1) 2M x 64	(1) 1M x 64
32MB	(1) 4M x 64	None
32MB	(1) 2M x 64	(1) 2M x 64
40MB	(1) 4M x 64	(1) 1M x 64
48MB	(1) 4M x 64	(1) 2M x 64
64MB	(1) 8M x 64	None
64MB	(1) 4M x 64	(1) 4M x 64
72MB	(1) 8M x 64	(1) 1M x 64
80MB	(1) 8M x 64	(1) 2M x 64
96MB	(1) 8M x 64	(1) 4M x 64
128MB	(1) 16M x 64	None

DIMM CONFIGURATION (CON'T)

Size	Bank 0	Bank 1
128MB	(1) 8M x 64	(1) 8M x 64
136MB	(1) 16M x 64	(1) 1M x 64
144MB	(1) 16M x 64	(1) 2M x 64
160MB	(1) 16M x 64	(1) 4M x 64
192MB	(1) 16M x 64	(1) 8M x 64
256MB	(1) 16M x 64	(1) 16M x 64

Note: Board accepts SDRAM memory.

CACHE CONFIGURATION

Size	Bank 0	TAG
512KB	(1) 64K x 64	Unidentified

CPU speed	Clock speed	Multiplier	SW1/1	SW1/2	SW1/3	SW1/4	SW1/5	SW1/6
200MHz	75MHz	2x	On	On	Off	On	Off	Off

CPU SPEED SELECTION (IBM 6X86)

CPU speed	Clock speed	Multiplier	SW1/1	SW1/2	SW1/3	SW1/4	SW1/5	SW1/6
200MHz	75MHz	2x	On	On	Off	On	Off	Off

CPU SPEED SELECTION (CX 6X86MX)

CPU speed	Clock speed	Multiplier	SW1/1	SW1/2	SW1/3	SW1/4	SW1/5	SW1/6
166MHz	60MHz	2.5x	On	On	On	On	On	Off
200MHz	75MHz	2x	On	On	Off	On	Off	Off
233MHz	66MHz	3x	Off	On	On	Off	On	Off
300MHz	66MHz	3.5x	Off	On	On	Off	Off	Off
233MHz	75MHz	2.5x	On	On	Off	On	On	Off
266MHz	83MHz	2.5x	Off	On	Off	On	On	Off
333MHz	100MHz	2.5x	Off	Off	Off	On	On	Off

CPU SPEED SELECTION (IDT C6)

CPU speed	Clock speed	Multiplier	SW1/1	SW1/2	SW1/3	SW1/4	SW1/5	SW1/6
150MHz	75MHz	2x	On	On	Off	On	Off	Off
180MHz	60MHz	3x	On	On	On	Off	On	Off
200MHz	66MHz	3x	Off	On	On	Off	On	Off

CPU SPEED SELECTION (AM K5)

CPU speed	Clock speed	Multiplier	SW1/1	SW1/2	SW1/3	SW1/4	SW1/5	SW1/6
90MHz	60MHz	1.5x	On	On	On	Off	Off	Off
166MHz	66MHz	2.5x	Off	On	On	On	On	Off

CPU SPEED SELECTION (AM K6)

CPU speed	Clock speed	Multiplier	SW1/1	SW1/2	SW1/3	SW1/4	SW1/5	SW1/6
166MHz	66MHz	2.5x	Off	On	On	On	On	Off
200MHz	66MHz	3x	Off	On	On	Off	On	Off
233MHz	66MHz	3.5x	Off	On	On	Off	Off	Off
266MHz	66MHz	4x	Off	On	On	On	Off	On
300MHz	66MHz	4.5x	Off	On	On	On	On	On

CPU SPEED SELECTION (AM K6-2)

CPU speed	Clock speed	Multiplier	SW1/1	SW1/2	SW1/3	SW1/4	SW1/5	SW1/6
300MHz	100MHz	3x	Off	Off	Off	Off	On	Off
333MHz	95MHz	3.5x	On	Off	Off	Off	On	Off
350MHz	100MHz	3.5x	Off	Off	Off	Off	Off	Off

CPU SPEED SELECTION (INTEL)

CPU speed	Clock speed	Multiplier	SW1/1	SW1/2	SW1/3	SW1/4	SW1/5	SW1/6
90MHz	60MHz	1.5x	On	On	On	Off	Off	Off
100MHz	66MHz	1.5x	Off	On	On	Off	Off	Off
120MHz	60MHz	2x	On	On	On	On	Off	Off
133MHz	66MHz	2x	Off	On	On	On	Off	Off
150MHz	60MHz	2.5x	On	On	On	On	On	Off
166MHz	66MHz	2.5x	Off	On	On	On	On	Off
200MHz	66MHz	3x	Off	On	On	Off	On	Off

CPU SPEED SELECTION (INTEL MMX)

CPU speed	Clock speed	Multiplier	SW1/1	SW1/2	SW1/3	SW1/4	SW1/5	SW1/6
166MHz	66MHz	2.5x	Off	On	On	On	On	Off
200MHz	66MHz	3x	Off	On	On	Off	On	Off
233MHz	66MHz	3.5x	Off	On	On	Off	Off	Off

CPU VOLTAGE SELECTION

Voltage	JP3
2.2v	Pins 1 & 2 closed
2.8v	Pins 3 & 4 closed
2.9v	Pins 5 & 6 closed
3.2v	Pins 7 & 8 closed
3.45v	Pins 9 & 10 closed
3.52v	Pins 11 & 12 closed

I/O VOLTAGE SELECTION

Voltage	JP5
3.45v	Pins 1 & 2 closed
3.52v	Pins 3 & 4 closed