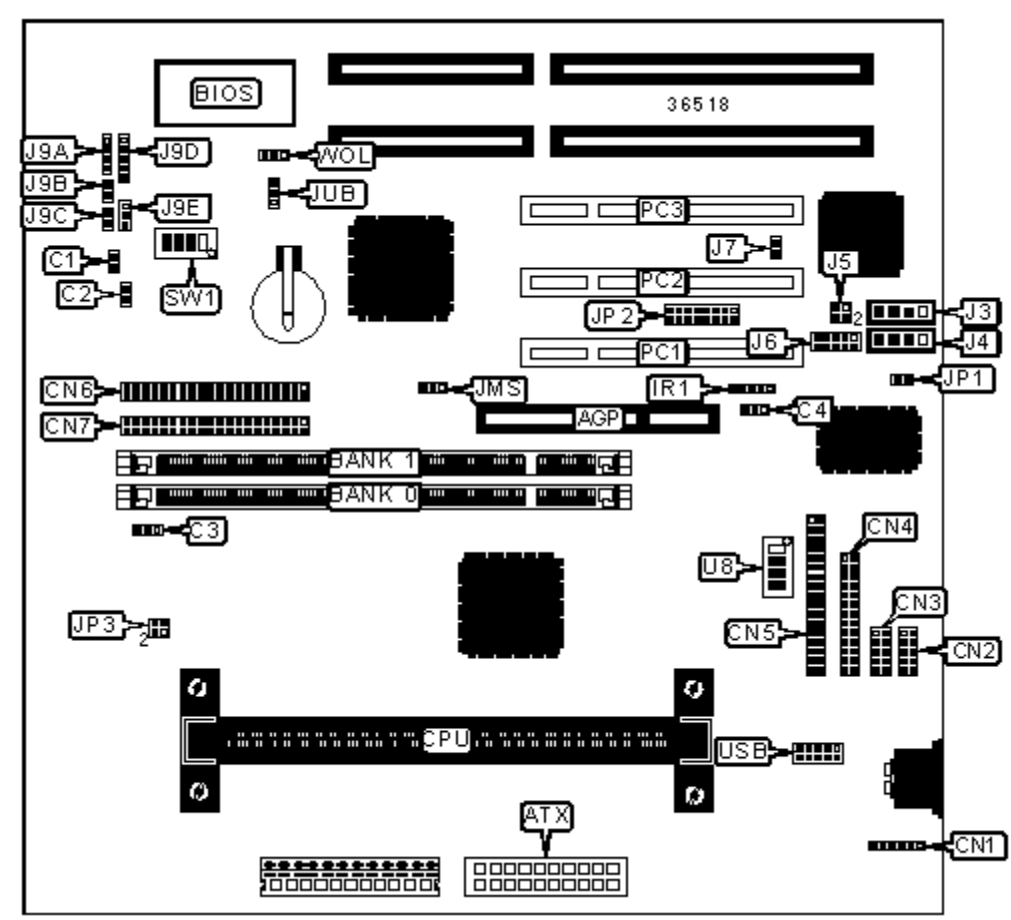


J-MARK COMPUTER CORPORATION

J-791BS

Device Type	Mainboard
Processor	Pentium II
Processor Speed	233/266/300/333/350/400/450MHz
Chip Set	VIA Apollo
Maximum Onboard Memory	512MB (EDO & SDRAM supported)
Audio Chip Set	Unidentified
Cache	256/512KB (located on Pentium II CPU)
BIOS	Award
Dimensions	230mm x 220mm
I/O Options	32-bit PCI slots (3), floppy drive interface, game interface, green PC connector, IDE interfaces (2), parallel port, PS/2 mouse interface, serial ports (2), IR connector, USB connectors, ATX power connector, AGP slot, audio in – CD-ROMs (2), wake on LAN connector



CONNECTIONS

Purpose	Location	Purpose	Location
AGP slot	AGP	Audio in – CD-ROM	J3
ATX power connector	ATX	Audio in – CD-ROM	J4
IDE interface LED	C1	Digital line out	J5/pins 1 & 2
	C2		J5/pins 3 &

Soft off power supply		Digital line in	4
CPU fan power	C3	Audio connector	J6
Chassis fan power	C4	Speaker	J9A
PS/2 mouse interface	CN1	Reset switch	J9B
Serial port 1	CN2	Turbo LED	J9C
Serial port 2	CN3	Power LED & keylock	J9D
Parallel port	CN4	Turbo switch	J9E
Floppy drive interface	CN5	Game interface	JP2
IDE interface 2	CN6	32-bit PCI slots	PC1 – PC3
IDE interface 1	CN7	USB connector	USB
IR connector	IR1	Wake on LAN connector	WOL

USER CONFIGURABLE SETTINGS

Function		Label	Position
»	Factory configured - do not alter	J7	Unidentified
	PS/2 mouse IRQ12 enabled	JMS	Pins 1 & 2 closed
	PS/2 mouse IRQ12 disabled	JMS	Pins 2 & 3 closed
»	Factory configured - do not alter	JP1	Unidentified
»	Factory configured - do not alter	JP3	Unidentified
»	CMOS memory normal operation	JUB	Pins 1 & 2 closed
	CMOS memory clear	JUB	Pins 2 & 3 closed

DIMM CONFIGURATION

Size	Bank 0	Bank 1
8MB	(1) 1M x 64	None
16MB	(1) 2M x 64	None
16MB	(1) 1M x 64	(1) 1M x 64
24MB	(1) 2M x 64	(1) 1M x 64
32MB	(1) 4M x 64	None
32MB	(1) 2M x 64	(1) 2M x 64

40MB	(1) 4M x 64	(1) 1M x 64
48MB	(1) 4M x 64	(1) 2M x 64
64MB	(1) 8M x 64	None
64MB	(1) 4M x 64	(1) 4M x 64
72MB	(1) 8M x 64	(1) 1M x 64
80MB	(1) 8M x 64	(1) 2M x 64
96MB	(1) 8M x 64	(1) 4M x 64
128MB	(1) 8M x 64	(1) 8M x 64
128MB	(1) 16M x 64	None
136MB	(1) 16M x 64	(1) 1M x 64
144MB	(1) 16M x 64	(1) 2M x 64
160MB	(1) 16M x 64	(1) 4M x 64
192MB	(1) 16M x 64	(1) 8M x 64
256MB	(1) 16M x 64	(1) 16M x 64

DIMM CONFIGURATION (CON'T)

Size	Bank 0	Bank 1
256MB	(1) 32M x 64	None
264MB	(1) 32M x 64	(1) 1M x 64
272MB	(1) 32M x 64	(1) 2M x 64
288MB	(1) 32M x 64	(1) 4M x 64
320MB	(1) 32M x 64	(1) 8M x 64
384MB	(1) 32M x 64	(1) 16M x 64
512MB	(1) 32M x 64	(1) 32M x 64

Note: Board accepts EDO & SDRAM memory.

CACHE CONFIGURATION

Note: 256KB/512KB cache is located on the Pentium II CPU.

CPU SPEED SELECTION

CPU speed	Clock speed	Multiplier	SW1/1	SW1/2	SW1/3	SW1/4
233MHz	66MHz	3.5x	Off	Off	Off	Off
266MHz	66MHz	4x	Off	Off	Off	Off
300MHz	66MHz	4.5x	Off	Off	Off	Off
333MHz	66MHz	5x	Off	Off	Off	Off
350MHz	100MHz	3.5x	Off	Off	On	Off
400MHz	100MHz	4x	Off	Off	On	Off
450MHz	100MHz	4.5x	Off	Off	On	Off

CPU SPEED SELECTION (CON'T)

CPU speed	Clock speed	Multiplier	U8/1	U8/2	U8/3	U8/4
233MHz	66MHz	3.5x	On	Off	Off	On
266MHz	66MHz	4x	Off	On	On	On
300MHz	66MHz	4.5x	Off	On	Off	On
333MHz	66MHz	5x	Off	Off	On	On
350MHz	100MHz	3.5x	On	Off	Off	On
400MHz	100MHz	4x	Off	On	On	On
450MHz	100MHz	4.5x	Off	On	Off	On