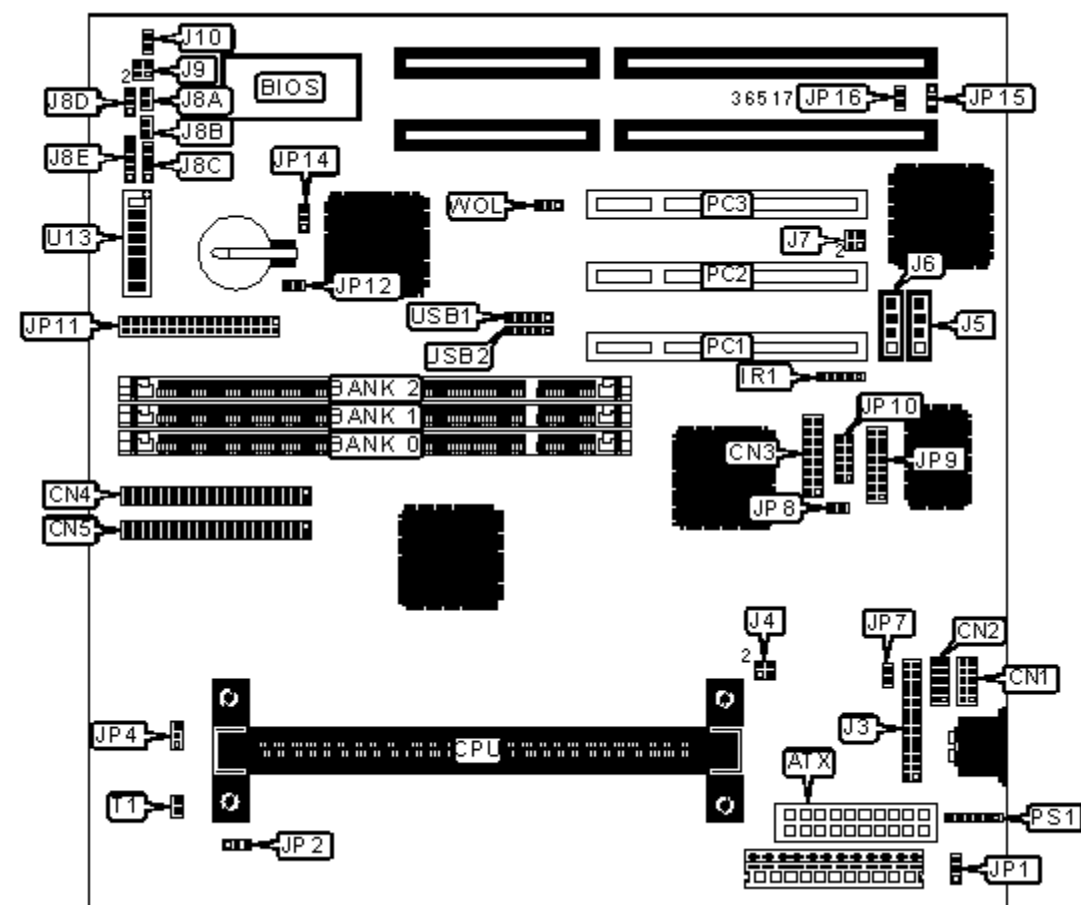


# J-MARK COMPUTER CORPORATION

## J-756BF

<b>Device Type</b>	Mainboard
<b>Processor</b>	Pentium II
<b>Processor Speed</b>	233/266/300/333/350/400/450MHz
<b>Chip Set</b>	SIS 5595
<b>Video Chip Set</b>	SIS
<b>Maximum Onboard Memory</b>	768MB (EDO & SDRAM supported) (Unified Memory Architecture UMA)
<b>Audio Chip Set</b>	CMI
<b>Cache</b>	256/512KB (located on Pentium II CPU)
<b>BIOS</b>	Award
<b>Dimensions</b>	230mm x 220mm
<b>I/O Options</b>	32-bit PCI slots (3), floppy drive interface, game interface, green PC connector, IDE interfaces (2), parallel port, PS/2 mouse interface, serial ports (2), VGA interface, IR connector, USB connectors (2), ATX power connector, audio in – CD-ROMs (2), wake on LAN connector



### CONNECTIONS

Purpose	Location	Purpose	Location
ATX power connector	ATX	Turbo switch	J8D
Serial port 2	CN1	Power LED & keylock	J8E
Serial port 1	CN2	IDE interface LED	J9/pins 1 & 3
VGA interface	CN3	Soft off power supply	J10

IDE interface 2	CN4	CPU fan power	JP2
IDE interface 1	CN5	Game interface	JP9
IR connector	IR1	Audio connector	JP10
Parallel port	J3	Floppy drive interface	JP11
Audio in – CD-ROM	J5	Chassis fan power	JP15
Audio in – CD-ROM	J6	32-bit PCI slots	PC1 – PC3
Digital line out	J7/pins 1 & 2	PS/2 mouse interface	PS1
Digital line in	J7/pins 3 & 4	USB connector 1	USB1
Turbo LED	J8A	USB connector 2	USB2
Reset switch	J8B	Wake on LAN connector	WOL
Speaker	J8C		

### USER CONFIGURABLE SETTINGS

Function		Label	Position
»	Factory configured - do not alter	J4	Unidentified
»	Factory configured - do not alter	JP1	Unidentified
»	Factory configured - do not alter	JP4	Unidentified
»	Factory configured - do not alter	JP7	Unidentified
»	Factory configured - do not alter	JP8	Unidentified
	PS/2 mouse IRQ12 enabled	JP12	Closed
	PS/2 mouse IRQ12 disabled	JP12	Open
»	CMOS memory normal operation	JP14	Pins 1 & 2 closed
	CMOS memory clear	JP14	Pins 2 & 3 closed
	On board sound enabled	JP16	Open
	On board sound disabled	JP16	Closed
»	Factory configured - do not alter	T1	Unidentified
»	Factory configured - do not alter	U13/8	Unidentified

### DIMM CONFIGURATION

Size	Bank 0	Bank 1	Bank 2
8MB	(1) 1M x 64	None	None

16MB	(1) 2M x 64	None	None
16MB	(1) 1M x 64	(1) 1M x 64	None
24MB	(1) 2M x 64	(1) 1M x 64	None
24MB	(1) 1M x 64	(1) 1M x 64	(1) 1M x 64
32MB	(1) 4M x 64	None	None
32MB	(1) 2M x 64	(1) 1M x 64	(1) 1M x 64
32MB	(1) 2M x 64	(1) 2M x 64	None
40MB	(1) 4M x 64	(1) 1M x 64	None
40MB	(1) 2M x 64	(1) 2M x 64	(1) 1M x 64
48MB	(1) 4M x 64	(1) 1M x 64	(1) 1M x 64
48MB	(1) 4M x 64	(1) 2M x 64	None
48MB	(1) 2M x 64	(1) 2M x 64	(1) 2M x 64

**DIMM CONFIGURATION (CON'T)**

Size	Bank 0	Bank 1	Bank 2
56MB	(1) 4M x 64	(1) 2M x 64	(1) 1M x 64
64MB	(1) 8M x 64	None	None
64MB	(1) 4M x 64	(1) 2M x 64	(1) 2M x 64
64MB	(1) 4M x 64	(1) 4M x 64	None
72MB	(1) 8M x 64	(1) 1M x 64	None
72MB	(1) 4M x 64	(1) 4M x 64	(1) 1M x 64
80MB	(1) 8M x 64	(1) 1M x 64	(1) 1M x 64
80MB	(1) 8M x 64	(1) 2M x 64	None
80MB	(1) 4M x 64	(1) 4M x 64	(1) 2M x 64
88MB	(1) 8M x 64	(1) 2M x 64	(1) 1M x 64
96MB	(1) 8M x 64	(1) 2M x 64	(1) 2M x 64
96MB	(1) 8M x 64	(1) 4M x 64	None
96MB	(1) 4M x 64	(1) 4M x 64	(1) 4M x 64
104MB	(1) 8M x 64	(1) 4M x 64	(1) 1M x 64
112MB	(1) 8M x 64	(1) 4M x 64	(1) 2M x 64
128MB	(1) 16M x 64	None	None

128MB	(1) 8M x 64	(1) 4M x 64	(1) 4M x 64
128MB	(1) 8M x 64	(1) 8M x 64	None
136MB	(1) 16M x 64	(1) 1M x 64	None
136MB	(1) 8M x 64	(1) 8M x 64	(1) 1M x 64
144MB	(1) 16M x 64	(1) 1M x 64	(1) 1M x 64
144MB	(1) 16M x 64	(1) 2M x 64	None
144MB	(1) 8M x 64	(1) 8M x 64	(1) 2M x 64
152MB	(1) 16M x 64	(1) 2M x 64	(1) 1M x 64
160MB	(1) 16M x 64	(1) 2M x 64	(1) 2M x 64
160MB	(1) 16M x 64	(1) 4M x 64	None
160MB	(1) 8M x 64	(1) 8M x 64	(1) 4M x 64
192MB	(1) 16M x 64	(1) 4M x 64	(1) 4M x 64
192MB	(1) 16M x 64	(1) 8M x 64	None
192MB	(1) 8M x 64	(1) 8M x 64	(1) 8M x 64
200MB	(1) 16M x 64	(1) 8M x 64	(1) 1M x 64
208MB	(1) 16M x 64	(1) 8M x 64	(1) 2M x 64
256MB	(1) 32M x 64	None	None
256MB	(1) 16M x 64	(1) 8M x 64	(1) 8M x 64
264MB	(1) 32M x 64	(1) 1M x 64	None
272MB	(1) 32M x 64	(1) 1M x 64	(1) 1M x 64
272MB	(1) 32M x 64	(1) 2M x 64	None
288MB	(1) 32M x 64	(1) 2M x 64	(1) 2M x 64
288MB	(1) 32M x 64	(1) 4M x 64	None
320MB	(1) 32M x 64	(1) 4M x 64	(1) 4M x 64
320MB	(1) 32M x 64	(1) 8M x 64	None
384MB	(1) 32M x 64	(1) 8M x 64	(1) 8M x 64
384MB	(1) 32M x 64	(1) 16M x 64	None
384MB	(1) 16M x 64	(1) 16M x 64	(1) 16M x 64
512MB	(1) 32M x 64	(1) 16M x 64	(1) 16M x 64
512MB	(1) 32M x 64	(1) 32M x 64	None
768MB	(1) 32M x 64	(1) 32M x 64	(1) 32M x 64

Note: Board accepts EDO & SDRAM memory.

## CACHE CONFIGURATION

Note: 256KB/512KB cache is located on the Pentium II CPU.

## CPU SPEED SELECTION

CPU speed	Clock speed	Multiplier	U13/1	U13/2	U13/3
233MHz	66MHz	3.5x	On	Off	On
266MHz	66MHz	4x	On	On	Off
300MHz	66MHz	4.5x	On	Off	Off
333MHz	66MHz	5x	On	On	Off
350MHz	100MHz	3.5x	On	Off	On
400MHz	100MHz	4x	On	On	Off
450MHz	100MHz	4.5x	On	Off	Off

## CPU SPEED SELECTION (CON'T)

CPU speed	Clock speed	Multiplier	U13/4	U13/5	U13/6	U13/7
233MHz	66MHz	3.5x	Off	Off	On	On
266MHz	66MHz	4x	On	Off	On	On
300MHz	66MHz	4.5x	On	Off	On	On
333MHz	66MHz	5x	Off	Off	On	On
350MHz	100MHz	3.5x	Off	Off	Off	Off
400MHz	100MHz	4x	On	Off	Off	Off
450MHz	100MHz	4.5x	On	Off	Off	Off