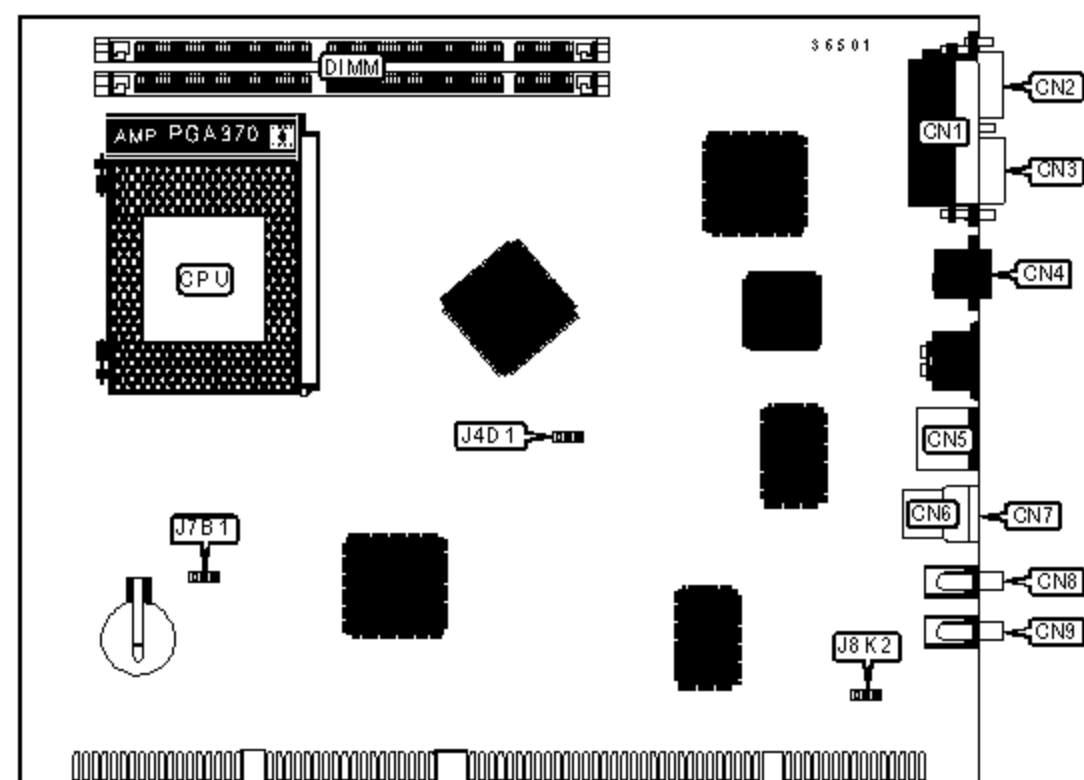


INTEL CORPORATION

BL440ZX

Device Type	Mainboard
Processor	Celeron
Processor Speed	300/333/366MHz
Chip Set	Intel 440ZX
Video Chip Set	ATI
Maximum Onboard Memory	256MB (SDRAM supported)
Maximum Video Memory	8MB
Audio Chip Set	Creative
Cache	128KB (located on Celeron CPU)
BIOS	AMI
Dimensions	254mm x 218mm
I/O Options	Ethernet 10BaseT connector, floppy drive interface, parallel port, PS/2 mouse port, serial ports (2), VGA port, USB connectors (2), line out, microphone in



CONNECTIONS

Purpose	Location	Purpose	Location
Parallel port	CN1	USB connector 1	CN6
VGA port	CN2	USB connector 2	CN7
Serial port	CN3	Line out	CN8
Ethernet 10BaseT connector	CN4	Microphone in	CN9
PS/2 mouse port	CN5	CPU fan power	J4D1

USER CONFIGURABLE SETTINGS

	Function	Label	Position
»	Microphone in select mainboard back panel	J8K2	Pins 2 & 3 closed
	Microphone in select NLX riser card	J8K2	Pins 1 & 2 closed

DIMM CONFIGURATION

Size	Bank 0	Bank 1
8MB	(1) 1M x 64	None
16MB	(1) 2M x 64	None
16MB	(1) 1M x 64	(1) 1M x 64
24MB	(1) 2M x 64	(1) 1M x 64
32MB	(1) 4M x 64	None
32MB	(1) 2M x 64	(1) 2M x 64
40MB	(1) 4M x 64	(1) 1M x 64
48MB	(1) 4M x 64	(1) 2M x 64
64MB	(1) 8M x 64	None
64MB	(1) 4M x 64	(1) 4M x 64
72MB	(1) 8M x 64	(1) 1M x 64
80MB	(1) 8M x 64	(1) 2M x 64
96MB	(1) 8M x 64	(1) 4M x 64
128MB	(1) 16M x 64	None
128MB	(1) 8M x 64	(1) 8M x 64
136MB	(1) 16M x 64	(1) 1M x 64
144MB	(1) 16M x 64	(1) 2M x 64
160MB	(1) 16M x 64	(1) 4M x 64
192MB	(1) 16M x 64	(1) 8M x 64
256MB	(1) 16M x 64	(1) 16M x 64
Note: Board accepts SDRAM memory.		

CACHE CONFIGURATION

CACHE CONFIGURATION

Note: 128KB cache is located on the Celeron CPU.

VIDEO MEMORY CONFIGURATION

Note: The location of the video memory is unidentified.

BIOS SELECTION

Setting	J7B1
Normal operation	Pins 1 & 2 closed
Configuration mode	Pins 2 & 3 closed
Recovery mode	Open