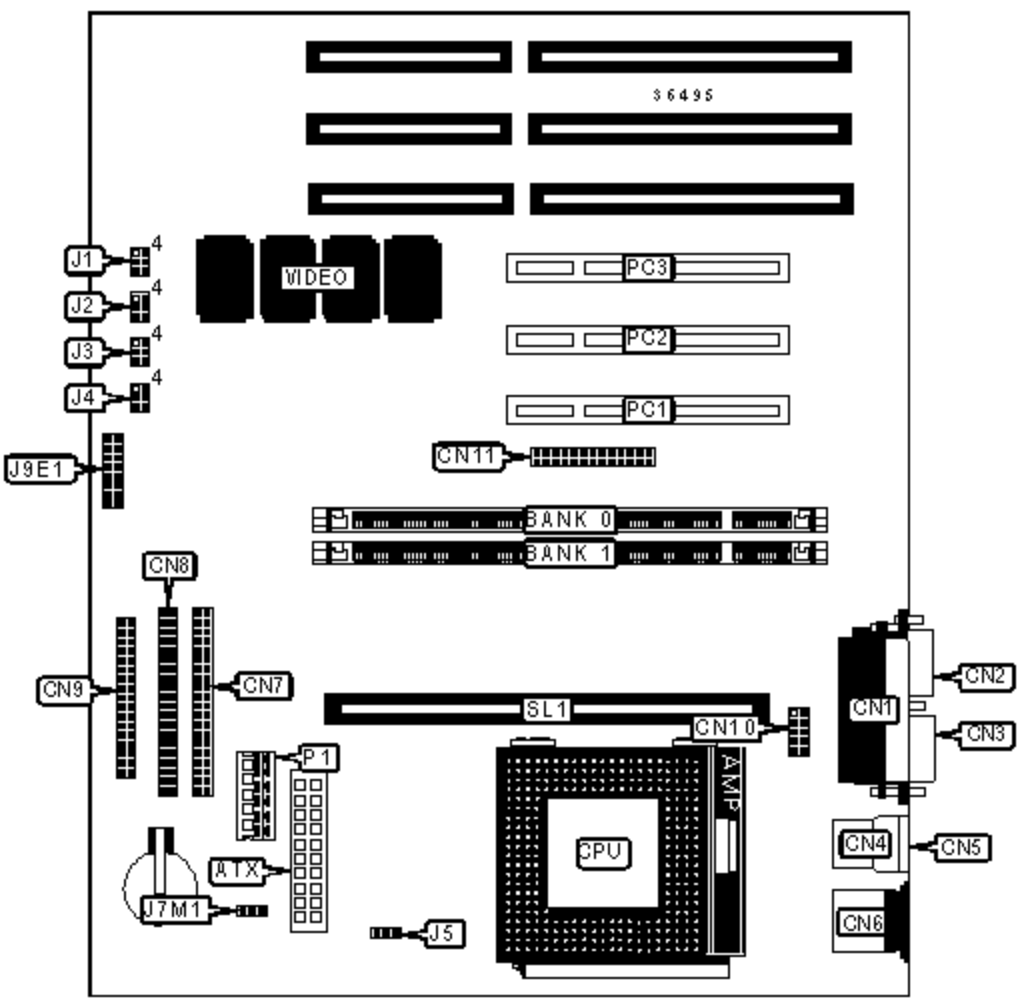


# DELL COMPUTER CORPORATION

## DIMENSION PXXXA

<b>Device Type</b>	Mainboard
<b>Processor</b>	Pentium/Pentium MMX
<b>Processor Speed</b>	133/166/200/233MHz
<b>Chip Set</b>	Intel 430VX
<b>Video Chip Set</b>	Unidentified
<b>Maximum Onboard Memory</b>	64MB (SDRAM supported)
<b>Maximum Video Memory</b>	2MB
<b>Cache</b>	256/512KB
<b>BIOS</b>	Unidentified
<b>Dimensions</b>	254mm x 218mm
<b>I/O Options</b>	32-bit PCI slots (3), floppy drive interface, IDE interfaces (2), parallel port, PS/2 mouse port, serial ports (2), VGA feature connector, VGA port, cache slot, USB connectors (2), ATX power connector, AGP slot



CONNECTIONS			
Purpose	Location	Purpose	Location
ATX power connector	ATX	Floppy drive interface	CN9
Parallel port	CN1	Serial port 2	CN10

VGA port	CN2	VGA feature connector	CN11
Serial port 1	CN3	CPU fan power	J7M1
USB connector 1	CN4	Front panel connector	J9E1
USB connector 2	CN5	5v power	P1
PS/2 mouse port	CN6	32-bit PCI slots	PC1 – PC3
IDE interface 2	CN7	Cache slot	SL1
IDE interface 1	CN8		

### USER CONFIGURABLE SETTINGS

Function		Label	Position
	Password enabled	J1	Pins 1 & 2 closed
	Password disabled	J1	Pins 2 & 3 closed
»	CMOS memory normal operation	J1	Pins 4 & 5 closed
	CMOS memory clear	J1	Pins 5 & 6 closed
	Setup access enabled	J2	Pins 1 & 2 closed
	Setup access disabled	J2	Pins 2 & 3 closed
»	Factory configured - do not alter	J2/pins 4 - 6	Open
»	Factory configured - do not alter	J5	Unidentified

### DIMM CONFIGURATION

Size	Bank 0	Bank 1
8MB	(1) 1M x 64	None
16MB	(1) 2M x 64	None
16MB	(1) 1M x 64	(1) 1M x 64
24MB	(1) 2M x 64	(1) 1M x 64
32MB	(1) 4M x 64	None
32MB	(1) 2M x 64	(1) 2M x 64
40MB	(1) 4M x 64	(1) 1M x 64
48MB	(1) 4M x 64	(1) 2M x 64
64MB	(1) 8M x 64	None

64MB

(1) 4M x 64

(1) 4M x 64

Note: Board accepts SDRAM memory.

### CACHE CONFIGURATION

Size	SL1
256KB	256KB module installed
512KB	512KB module installed

### VIDEO MEMORY JUMPER CONFIGURATION

Note: Video memory is factory installed and is not configurable.

### CPU SPEED SELECTION (PENTIUM)

CPU speed	Clock speed	Multiplier	J3	J4
133MHz	66MHz	2x	1 & 2, 5 & 6	2 & 3, 4 & 5
166MHz	66MHz	2.5x	1 & 2, 5 & 6	2 & 3, 5 & 6

Note: Pins designated should be in the closed position.

### CPU SPEED SELECTION (PENTIUM MMX)

CPU speed	Clock speed	Multiplier	J3	J4
166MHz	66MHz	2.5x	1 & 2, 5 & 6	2 & 3, 5 & 6
200MHz	66MHz	3x	1 & 2, 5 & 6	1 & 2, 5 & 6
233MHz	66MHz	3.5x	1 & 2, 5 & 6	1 & 2, 4 & 5

Note: Pins designated should be in the closed position.