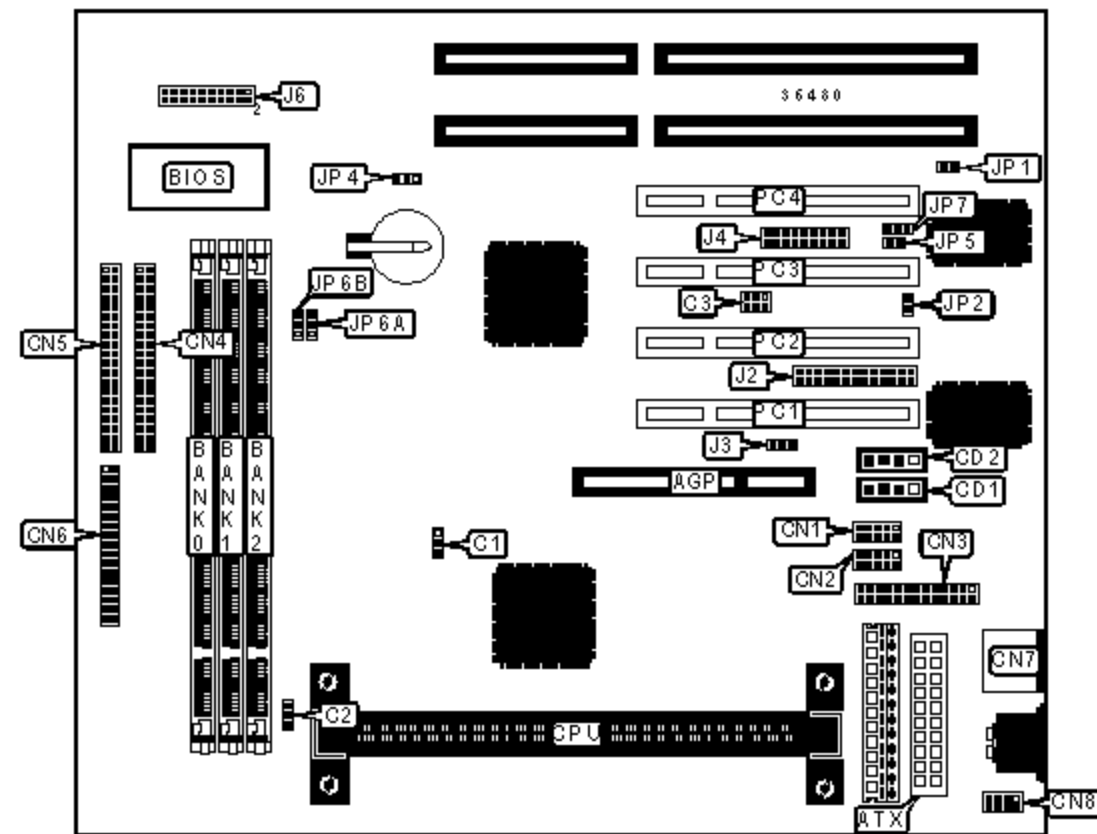


AMPTRON INTERNATIONAL, INC.

P II-3300

Device Type	Mainboard
Processor	Pentium II/Celeron
Processor Speed	233/266/300/333/366/400/433/500/533MHz
Chip Set	Intel 440BX
Maximum Onboard Memory	768MB (SDRAM supported)
Audio Chip Set	Unidentified
Cache	0/128/256/512KB (located on the CPU)
BIOS	AMI
Dimensions	260mm x 220mm
I/O Options	32-bit PCI slots (4), floppy drive interface, IDE interfaces (2), parallel port, PS/2 mouse port, PS/2 mouse interface, serial ports (2), ATX power connector, AGP slot, audio in - CD-ROMs (2), SB-link connector, wake on LAN connector



CONNECTIONS

Purpose	Location	Purpose	Location
AGP slot	AGP	PS/2 mouse port	CN7
ATX power connector	ATX	PS/2 mouse interface	CN8
Chassis fan power	C1	Sound/game connector	J2
Chassis fan power	C2	Wake on LAN connector	J3
SB-link connector	C3	ATX form card connector	J4
Audio in - CD-ROM	CD1	Speaker	J6/pins 1/3/5/7

Audio in - CD-ROM	CD2	Power LED & keylock	J6/pins 2/4/6/8/10
Serial port 1	CN1	Turbo LED	J6/pins 13 & 14
Serial port 2	CN2	IDE interface LED	J6/pins 15 & 16
Parallel port	CN3	Reset switch	J6/pins 17 & 18
IDE interface 1	CN4	Soft off power supply	J6/pins 19 & 20
IDE interface 2	CN5	32-bit PCI slots	PC1 - PC4
Floppy drive interface	CN6		

USER CONFIGURABLE SETTINGS

Function		Label	Position
»	Factory configured - do not alter	JP1	Unidentified
»	Factory configured - do not alter	JP2	Unidentified
»	CMOS memory normal operation	JP4	Pins 1 & 2 closed
	CMOS memory clear	JP4	Pins 2 & 3 closed
»	Factory configured - do not alter	JP5	Unidentified
»	Factory configured - do not alter	JP7	Unidentified
	Power supply select AT	JP9	Pins 2 & 3 closed
	Power supply select ATX	JP9	Pins 1 & 2 closed

Note: The location of JP9 is unidentified.

DIMM CONFIGURATION

Size	Bank 0	Bank 1	Bank 2
8MB	(1) 1M x 64	None	None
16MB	(1) 2M x 64	None	None
16MB	(1) 1M x 64	(1) 1M x 64	None
24MB	(1) 2M x 64	(1) 1M x 64	None
24MB	(1) 1M x 64	(1) 1M x 64	(1) 1M x 64

32MB	(1) 4M x 64	None	None
32MB	(1) 2M x 64	(1) 1M x 64	(1) 1M x 64
32MB	(1) 2M x 64	(1) 2M x 64	None
40MB	(1) 4M x 64	(1) 1M x 64	None
40MB	(1) 2M x 64	(1) 2M x 64	(1) 1M x 64
48MB	(1) 4M x 64	(1) 1M x 64	(1) 1M x 64
48MB	(1) 4M x 64	(1) 2M x 64	None
48MB	(1) 2M x 64	(1) 2M x 64	(1) 2M x 64
56MB	(1) 4M x 64	(1) 2M x 64	(1) 1M x 64
64MB	(1) 8M x 64	None	None
64MB	(1) 4M x 64	(1) 2M x 64	(1) 2M x 64
64MB	(1) 4M x 64	(1) 4M x 64	None
72MB	(1) 8M x 64	(1) 1M x 64	None
72MB	(1) 4M x 64	(1) 4M x 64	(1) 1M x 64

DIMM CONFIGURATION (CON'T)

Size	Bank 0	Bank 1	Bank 2
80MB	(1) 8M x 64	(1) 1M x 64	(1) 1M x 64
80MB	(1) 8M x 64	(1) 2M x 64	None
80MB	(1) 4M x 64	(1) 4M x 64	(1) 2M x 64
88MB	(1) 8M x 64	(1) 2M x 64	(1) 1M x 64
96MB	(1) 8M x 64	(1) 2M x 64	(1) 2M x 64
96MB	(1) 8M x 64	(1) 4M x 64	None
104MB	(1) 8M x 64	(1) 4M x 64	(1) 1M x 64
112MB	(1) 8M x 64	(1) 4M x 64	(1) 2M x 64
128MB	(1) 16M x 64	None	None
128MB	(1) 8M x 64	(1) 4M x 64	(1) 4M x 64
128MB	(1) 8M x 64	(1) 8M x 64	None

136MB	(1) 16M x 64	(1) 1M x 64	None
136MB	(1) 8M x 64	(1) 8M x 64	(1) 1M x 64
144MB	(1) 16M x 64	(1) 1M x 64	(1) 1M x 64
144MB	(1) 16M x 64	(1) 2M x 64	None
144MB	(1) 8M x 64	(1) 8M x 64	(1) 2M x 64
152MB	(1) 16M x 64	(1) 2M x 64	(1) 1M x 64
160MB	(1) 16M x 64	(1) 2M x 64	(1) 2M x 64
160MB	(1) 16M x 64	(1) 4M x 64	None
160MB	(1) 8M x 64	(1) 8M x 64	(1) 4M x 64
168MB	(1) 16M x 64	(1) 4M x 64	(1) 1M x 64
176MB	(1) 16M x 64	(1) 4M x 64	(1) 2M x 64
192MB	(1) 16M x 64	(1) 4M x 64	(1) 4M x 64
192MB	(1) 16M x 64	(1) 8M x 64	None
192MB	(1) 8M x 64	(1) 8M x 64	(1) 8M x 64
200MB	(1) 16M x 64	(1) 8M x 64	(1) 1M x 64
256MB	(1) 32M x 64	None	None
256MB	(1) 16M x 64	(1) 8M x 64	(1) 8M x 64
264MB	(1) 32M x 64	(1) 1M x 64	None
272MB	(1) 32M x 64	(1) 1M x 64	(1) 1M x 64
272MB	(1) 32M x 64	(1) 2M x 64	None
288MB	(1) 32M x 64	(1) 2M x 64	(1) 2M x 64
288MB	(1) 32M x 64	(1) 4M x 64	None
320MB	(1) 32M x 64	(1) 4M x 64	(1) 4M x 64
320MB	(1) 32M x 64	(1) 8M x 64	None
384MB	(1) 32M x 64	(1) 8M x 64	(1) 8M x 64
384MB	(1) 32M x 64	(1) 16M x 64	None
384MB	(1) 16M x 64	(1) 16M x 64	(1) 16M x 64
512MB	(1) 32M x 64	(1) 16M x 64	(1) 16M x 64
512MB	(1) 32M x 64	(1) 32M x 64	None

768MB	(1) 32M x 64	(1) 32M x 64	(1) 32M x 64
-------	--------------	--------------	--------------

Note: Board accepts SDRAM memory.

DIMM VOLTAGE CONFIGURATION

	Voltage	JP6A	JP6B
»	3.3v	Pins 1 & 2 closed	Pins 1 & 2 closed
	5v	Pins 2 & 3 closed	Pins 2 & 3 closed

CACHE CONFIGURATION

Note: 256KB/512KB cache is located on the Pentium II CPU. 128KB cache is located on the Celeron 300A & 333 CPU.