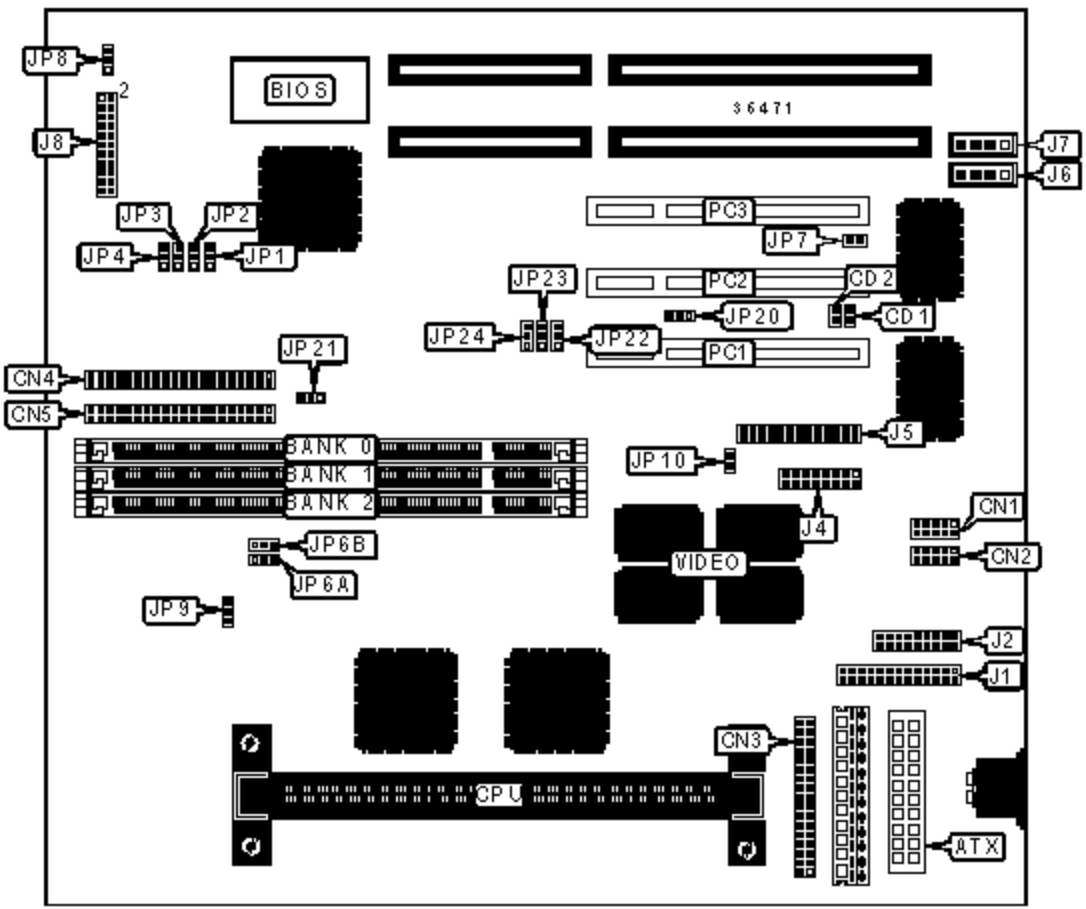


PC CHIPS MANUFACTURING, LTD.

M747

Device Type	Mainboard
Processor	Pentium II/Celeron
Processor Speed	233/266/300/333/366/350/400/450MHz
Chip Set	Unidentified
Video Chip Set	Unidentified
Maximum Onboard Memory	384MB (EDO & SDRAM & PC100 supported)
Maximum Video Memory	4MB
Audio Chip Set	Unidentified
Cache	0/128/256/512KB (located on the CPU)
BIOS	AMI
Dimensions	254mm x 218mm
I/O Options	32-bit PCI slots (3), floppy drive interface, game interface, IDE interfaces (2), parallel port, PS/2 mouse interface, serial ports (2), IR connector, VGA interface, ATX power connector, line in, line out, microphone in, audio in - CD-ROMs (2)



CONNECTIONS

Purpose	Location	Purpose	Location
ATX power connector	ATX	Sound/game connector	J5
Digital audio out	CD1	Audio in - CD-ROM	J6
Digital audio in	CD2	Audio in - CD-ROM	J7
Serial port 2	CN1	Speaker	J8/pins 1/3/5/7

Serial port 1	CN2	Power LED & keylock	J8/pins 2/4/6/8/10
Floppy drive interface	CN3	IDE interface LED	J8/pins 15 & 16
IDE interface 2	CN4	Reset switch	J8/pins 17 & 18
IDE interface 1	CN5	Soft off power supply	J8/pins 21 & 22
Parallel port	J1	CPU fan power	JP9
ATX form card connector	J2	Wake on LAN connector	JP20
VGA interface	J4	32-bit PCI slots	PC1 - PC3

USER CONFIGURABLE SETTINGS

Function		Label	Position
»	On board sound enabled	JP7	Open
	On board sound disabled	JP7	Closed
»	CMOS memory normal operation	JP8	Pins 2 & 3 closed
	CMOS memory clear	JP8	Pins 1 & 2 closed
»	Keyboard power on disabled	JP10	Open
	Keyboard power on enabled	JP10	Closed

DIMM CONFIGURATION

Size	Bank 0	Bank 1	Bank 2
8MB	(1) 1M x 64	None	None
16MB	(1) 2M x 64	None	None
16MB	(1) 1M x 64	(1) 1M x 64	None
24MB	(1) 2M x 64	(1) 1M x 64	None
24MB	(1) 1M x 64	(1) 1M x 64	(1) 1M x 64
32MB	(1) 4M x 64	None	None
32MB	(1) 2M x 64	(1) 1M x 64	(1) 1M x 64
32MB	(1) 2M x 64	(1) 2M x 64	None
40MB	(1) 4M x 64	(1) 1M x 64	None

40MB	(1) 4M x 64	(1) 1M x 64	None
40MB	(1) 2M x 64	(1) 2M x 64	(1) 1M x 64
48MB	(1) 4M x 64	(1) 1M x 64	(1) 1M x 64
48MB	(1) 4M x 64	(1) 2M x 64	None
48MB	(1) 2M x 64	(1) 2M x 64	(1) 2M x 64
56MB	(1) 4M x 64	(1) 2M x 64	(1) 1M x 64
64MB	(1) 8M x 64	None	None
64MB	(1) 4M x 64	(1) 2M x 64	(1) 2M x 64
64MB	(1) 4M x 64	(1) 4M x 64	None
72MB	(1) 8M x 64	(1) 1M x 64	None
72MB	(1) 4M x 64	(1) 4M x 64	(1) 1M x 64
80MB	(1) 8M x 64	(1) 1M x 64	(1) 1M x 64
80MB	(1) 8M x 64	(1) 2M x 64	None
80MB	(1) 4M x 64	(1) 4M x 64	(1) 2M x 64
88MB	(1) 8M x 64	(1) 2M x 64	(1) 1M x 64
96MB	(1) 8M x 64	(1) 2M x 64	(1) 2M x 64

DIMM CONFIGURATION (CON'T)

Size	Bank 0	Bank 1	Bank 2
96MB	(1) 8M x 64	(1) 4M x 64	None
96MB	(1) 4M x 64	(1) 4M x 64	(1) 4M x 64
104MB	(1) 8M x 64	(1) 4M x 64	(1) 1M x 64
112MB	(1) 8M x 64	(1) 4M x 64	(1) 2M x 64
128MB	(1) 16M x 64	None	None
128MB	(1) 8M x 64	(1) 4M x 64	(1) 4M x 64
128MB	(1) 8M x 64	(1) 8M x 64	None
136MB	(1) 16M x 64	(1) 1M x 64	None
136MB	(1) 8M x 64	(1) 8M x 64	(1) 1M x 64
144MB	(1) 16M x 64	(1) 1M x 64	(1) 1M x 64

144MB	(1) 16M x 64	(1) 1M x 64	(1) 1M x 64
144MB	(1) 16M x 64	(1) 2M x 64	None
144MB	(1) 8M x 64	(1) 8M x 64	(1) 2M x 64
152MB	(1) 16M x 64	(1) 2M x 64	(1) 1M x 64
160MB	(1) 16M x 64	(1) 2M x 64	(1) 2M x 64
160MB	(1) 16M x 64	(1) 4M x 64	None
160MB	(1) 8M x 64	(1) 8M x 64	(1) 4M x 64
168MB	(1) 16M x 64	(1) 4M x 64	(1) 1M x 64
176MB	(1) 16M x 64	(1) 4M x 64	(1) 2M x 64
192MB	(1) 16M x 64	(1) 4M x 64	(1) 4M x 64
192MB	(1) 16M x 64	(1) 8M x 64	None
192MB	(1) 8M x 64	(1) 8M x 64	(1) 8M x 64
200MB	(1) 16M x 64	(1) 8M x 64	(1) 1M x 64
208MB	(1) 16M x 64	(1) 8M x 64	(1) 2M x 64
224MB	(1) 16M x 64	(1) 8M x 64	(1) 4M x 64
256MB	(1) 16M x 64	(1) 8M x 64	(1) 8M x 64
384MB	(1) 16M x 64	(1) 16M x 64	(1) 16M x 64

Note: Board accepts EDO & SDRAM & PC100 memory.

DIMM VOLTAGE CONFIGURATION

Voltage		JP6A	JP6B
»	3.3v	Pins 2 & 3 closed	Pins 2 & 3 closed
	5v	Pins 1 & 2 closed	Pins 1 & 2 closed

CACHE CONFIGURATION

Note: 256KB/512KB cache is located on the Pentium II CPU. 128KB cache is located on the Celeron 300A & 333 CPU.

VIDEO MEMORY CONFIGURATION

Note: Video memory is factory installed and is not configurable.

CPU SPEED SELECTION (CELERON)

CPU speed	Clock speed	Multiplier	JP1	JP2	JP3	JP4
266MHz	66MHz	4x	2 & 3	1 & 2	2 & 3	2 & 3
300MHz	66MHz	4.5x	2 & 3	1 & 2	2 & 3	2 & 3

Note: Pins designated should be in the closed position.

CPU SPEED SELECTION (CELERON, CON'T)

CPU speed	Clock speed	Multiplier	JP21	JP22	JP23	JP24
266MHz	66MHz	4x	1 & 2	1 & 2	2 & 3	1 & 2
300MHz	66MHz	4.5x	1 & 2	2 & 3	2 & 3	1 & 2

Note: Pins designated should be in the closed position.

CPU SPEED SELECTION (PENTIUM II)

CPU speed	Clock speed	Multiplier	JP1	JP2	JP3	JP4
233MHz	66MHz	3.5x	2 & 3	1 & 2	2 & 3	2 & 3
266MHz	66MHz	4x	2 & 3	1 & 2	2 & 3	2 & 3
300MHz	66MHz	4.5x	2 & 3	1 & 2	2 & 3	2 & 3
333MHz	66MHz	5x	2 & 3	1 & 2	2 & 3	2 & 3
366MHz	66MHz	5.5x	2 & 3	1 & 2	2 & 3	2 & 3
350MHz	100MHz	3.5x	1 & 2	1 & 2	1 & 2	1 & 2
400MHz	100MHz	4x	1 & 2	1 & 2	1 & 2	1 & 2
450MHz	100MHz	4.5x	1 & 2	1 & 2	1 & 2	1 & 2

Note: Pins designated should be in the closed position.

CPU SPEED SELECTION (PENTIUM II, CON'T)

CPU speed	Clock speed	Multiplier	JP21	JP22	JP23	JP24
233MHz	66MHz	3.5x	1 & 2	2 & 3	1 & 2	2 & 3
266MHz	66MHz	4x	1 & 2	1 & 2	2 & 3	1 & 2
300MHz	66MHz	4.5x	1 & 2	2 & 3	2 & 3	1 & 2
333MHz	66MHz	5x	1 & 2	1 & 2	2 & 3	2 & 3
366MHz	66MHz	5.5x	1 & 2	2 & 3	2 & 3	2 & 3
350MHz	100MHz	3.5x	1 & 2	2 & 3	1 & 2	2 & 3
400MHz	100MHz	4x	1 & 2	1 & 2	2 & 3	1 & 2
450MHz	100MHz	4.5x	1 & 2	2 & 3	2 & 3	1 & 2

Note: Pins designated should be in the closed position.