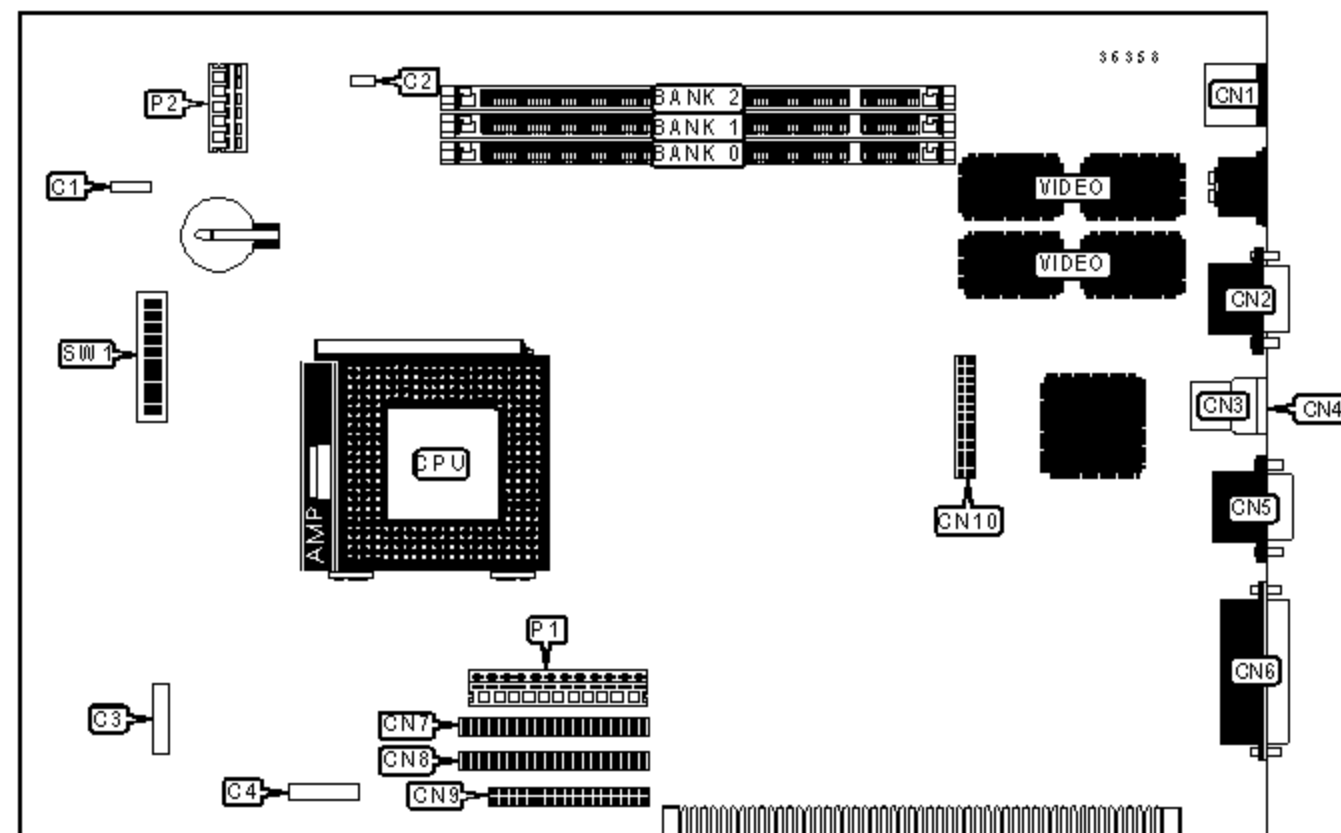


HEWLETT-PACKARD COMPANY

HP NET VECTRA

Device Type	Mainboard
Processor	Pentium MMX
Processor Speed	166/200/233MHz
Chip Set	Unidentified
Video Chip Set	S3
Maximum Onboard Memory	192MB (SDRAM supported)
Maximum Video Memory	2MB
Cache	Unidentified
BIOS	Unidentified
Dimensions	330mm x 218mm
I/O Options	Floppy drive interface, IDE interfaces (2), parallel port, PS/2 mouse port, serial port, VGA feature connector, VGA port, USB connectors (2), wake on LAN connector



CONNECTIONS

Purpose	Location	Purpose	Location
External battery	C1	USB connector 2	CN4
Speaker	C2	Serial port	CN5
Status panel connector	C3	Parallel port	CN6
External start connector	C4	IDE interface 1	CN7
PS/2 mouse port	CN1	IDE interface 2	CN8
VGA port	CN2	Floppy drive interface	CN9

USB connector 1	CN3	VGA feature connector	CN10
-----------------	-----	-----------------------	------

USER CONFIGURABLE SETTINGS

	Function	Label	Position
»	Factory configured - do not alter	SW1/6	Off
»	Password normal operation	SW1/7	Off
	Password clear	SW1/7	On
»	CMOS memory normal operation	SW1/8	Off
	CMOS memory clear	SW1/8	On
»	Keyboard power on disabled	SW1/9	On
	Keyboard power on enabled	SW1/9	Off
»	Product identification normal operation	SW1/10	Off
	Product identification memory clear	SW1/10	On

DIMM CONFIGURATION

Size	Bank 0	Bank 1	Bank 2
8MB	(1) 1M x 64	None	None
16MB	(1) 2M x 64	None	None
16MB	(1) 1M x 64	(1) 1M x 64	None
24MB	(1) 2M x 64	(1) 1M x 64	None
24MB	(1) 1M x 64	(1) 1M x 64	(1) 1M x 64
32MB	(1) 4M x 64	None	None
32MB	(1) 2M x 64	(1) 1M x 64	(1) 1M x 64
32MB	(1) 2M x 64	(1) 2M x 64	None
40MB	(1) 4M x 64	(1) 1M x 64	None
40MB	(1) 2M x 64	(1) 2M x 64	(1) 1M x 64
48MB	(1) 4M x 64	(1) 1M x 64	(1) 1M x 64

48MB	(1) 4M x 64	(1) 2M x 64	None
48MB	(1) 2M x 64	(1) 2M x 64	(1) 2M x 64
56MB	(1) 4M x 64	(1) 2M x 64	(1) 1M x 64
64MB	(1) 8M x 64	None	None
64MB	(1) 4M x 64	(1) 2M x 64	(1) 2M x 64
64MB	(1) 4M x 64	(1) 4M x 64	None
72MB	(1) 8M x 64	(1) 1M x 64	None
72MB	(1) 4M x 64	(1) 4M x 64	(1) 1M x 64
80MB	(1) 8M x 64	(1) 1M x 64	(1) 1M x 64

DIMM CONFIGURATION (CON'T)			
Size	Bank 0	Bank 1	Bank 2
80MB	(1) 8M x 64	(1) 2M x 64	None
80MB	(1) 4M x 64	(1) 4M x 64	(1) 2M x 64
88MB	(1) 8M x 64	(1) 2M x 64	(1) 1M x 64
96MB	(1) 8M x 64	(1) 2M x 64	(1) 2M x 64
96MB	(1) 8M x 64	(1) 4M x 64	None
96MB	(1) 4M x 64	(1) 4M x 64	(1) 4M x 64
104MB	(1) 8M x 64	(1) 4M x 64	(1) 1M x 64
112MB	(1) 8M x 64	(1) 4M x 64	(1) 2M x 64
128MB	(1) 8M x 64	(1) 4M x 64	(1) 4M x 64
128MB	(1) 8M x 64	(1) 8M x 64	None
136MB	(1) 8M x 64	(1) 8M x 64	(1) 1M x 64
144MB	(1) 8M x 64	(1) 8M x 64	(1) 2M x 64
160MB	(1) 8M x 64	(1) 8M x 64	(1) 4M x 64
192MB	(1) 8M x 64	(1) 8M x 64	(1) 8M x 64
Note: Board accepts SDRAM memory.			

CACHE CONFIGURATION

Note: The size and location of the cache is unidentified.

VIDEO MEMORY CONFIGURATION

Note: Video memory is factory installed and is not configurable.

CPU SPEED SELECTION

CPU speed	Clock speed	Multiplier	SW1/1	SW1/2	SW1/3	SW1/4	SW1/5
166MHz	66MHz	2.5x	On	Off	On	On	Off
200MHz	66MHz	3x	On	Off	Off	On	Off
233MHz	66MHz	3.5x	On	Off	Off	Off	Off