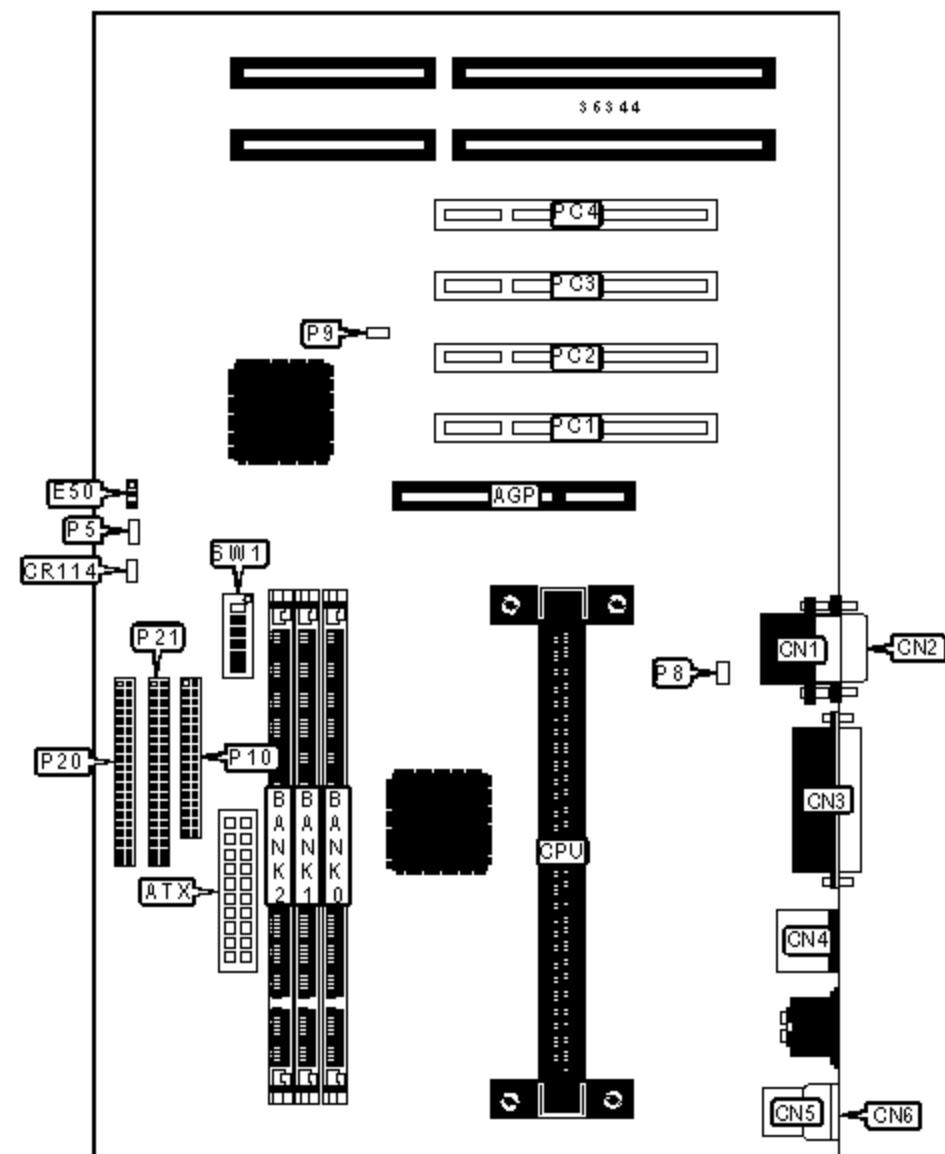


# COMPAQ COMPUTER CORPORATION

## PROSIGNIA 300 (PENTIUM II)

<b>Device Type</b>	Mainboard
<b>Processor</b>	Pentium II
<b>Processor Speed</b>	233/266/300/333/350/400/450/500MHz
<b>Chip Set</b>	Unidentified
<b>Maximum Onboard Memory</b>	384MB (SDRAM supported)
<b>Cache</b>	512KB (located on Pentium II CPU)
<b>BIOS</b>	Unidentified
<b>Dimensions</b>	305mm x 244mm
<b>I/O Options</b>	32-bit PCI slots (4), floppy drive interface, IDE interfaces (2), parallel port, PS/2 mouse port, serial ports (2), USB connectors (2), ATX power connector, AGP slot, wake on LAN connector



### CONNECTIONS

Purpose	Location	Purpose	Location
AGP slot	AGP	Auxiliary LED	CR114
ATX power connector	ATX	Power LED & keylock	P5
Serial port 2	CN1	Chassis fan power	P8

Serial port 1	CN2	Wake on LAN connector	P9
Parallel port	CN3	Floppy drive interface	P10
PS/2 mouse port	CN4	IDE interface 1	P20
USB connector 1	CN5	IDE interface 2	P21
USB connector 2	CN6	32-bit PCI slots	PC1 - PC4

### USER CONFIGURABLE SETTINGS

Function		Label	Position
»	CMOS memory normal operation	E50	Pins 1 & 2 closed
	CMOS memory clear	E50	Pins 2 & 3 closed
»	Password enabled	SW1/1	Off
	Password disabled	SW1/1	On
	AC-power on enabled	SW1/6	On
	AC-power on disabled	SW1/6	Off

### DIMM CONFIGURATION

Size	Bank 0	Bank 1	Bank 2
64MB	(1) 8M x 64	None	None
64MB	(1) 4M x 64	(1) 2M x 64	(1) 2M x 64
64MB	(1) 4M x 64	(1) 4M x 64	None
72MB	(1) 8M x 64	(1) 1M x 64	None
72MB	(1) 4M x 64	(1) 4M x 64	(1) 1M x 64
80MB	(1) 8M x 64	(1) 1M x 64	(1) 1M x 64
80MB	(1) 8M x 64	(1) 2M x 64	None
80MB	(1) 4M x 64	(1) 4M x 64	(1) 2M x 64
88MB	(1) 8M x 64	(1) 2M x 64	(1) 1M x 64

96MB	(1) 8M x 64	(1) 2M x 64	(1) 2M x 64
96MB	(1) 8M x 64	(1) 4M x 64	None
96MB	(1) 4M x 64	(1) 4M x 64	(1) 4M x 64
104MB	(1) 8M x 64	(1) 4M x 64	(1) 1M x 64
112MB	(1) 8M x 64	(1) 4M x 64	(1) 2M x 64
128MB	(1) 16M x 64	None	None
128MB	(1) 8M x 64	(1) 4M x 64	(1) 4M x 64
128MB	(1) 8M x 64	(1) 8M x 64	None
136MB	(1) 16M x 64	(1) 1M x 64	None
136MB	(1) 8M x 64	(1) 8M x 64	(1) 1M x 64
144MB	(1) 16M x 64	(1) 1M x 64	(1) 1M x 64
144MB	(1) 16M x 64	(1) 2M x 64	None
144MB	(1) 8M x 64	(1) 8M x 64	(1) 2M x 64

### DIMM CONFIGURATION (CON'T)

Size	Bank 0	Bank 1	Bank 2
152MB	(1) 16M x 64	(1) 2M x 64	(1) 1M x 64
160MB	(1) 16M x 64	(1) 2M x 64	(1) 2M x 64
160MB	(1) 16M x 64	(1) 4M x 64	None
160MB	(1) 8M x 64	(1) 8M x 64	(1) 4M x 64
168MB	(1) 16M x 64	(1) 4M x 64	(1) 1M x 64
176MB	(1) 16M x 64	(1) 4M x 64	(1) 2M x 64
192MB	(1) 16M x 64	(1) 4M x 64	(1) 4M x 64
192MB	(1) 16M x 64	(1) 8M x 64	None
192MB	(1) 8M x 64	(1) 8M x 64	(1) 8M x 64
200MB	(1) 16M x 64	(1) 8M x 64	(1) 1M x 64
208MB	(1) 16M x 64	(1) 8M x 64	(1) 2M x 64
224MB	(1) 16M x 64	(1) 8M x 64	(1) 4M x 64

256MB	(1) 32M x 64	None	None
256MB	(1) 16M x 64	(1) 8M x 64	(1) 8M x 64
264MB	(1) 32M x 64	(1) 1M x 64	None
272MB	(1) 32M x 64	(1) 1M x 64	(1) 1M x 64
272MB	(1) 32M x 64	(1) 2M x 64	None
288MB	(1) 32M x 64	(1) 2M x 64	(1) 2M x 64
288MB	(1) 32M x 64	(1) 4M x 64	None
320MB	(1) 32M x 64	(1) 4M x 64	(1) 4M x 64
320MB	(1) 32M x 64	(1) 8M x 64	None
384MB	(1) 32M x 64	(1) 8M x 64	(1) 8M x 64
384MB	(1) 32M x 64	(1) 16M x 64	None
384MB	(1) 16M x 64	(1) 16M x 64	(1) 16M x 64

Note: Board accepts SDRAM memory.

**CACHE CONFIGURATION**

Note: 512KB cache is located on the Pentium II CPU.

**CPU SPEED SELECTION**

CPU speed	Clock speed	Multiplier	SW1/2	SW1/3	SW1/4	SW1/5
233MHz	66MHz	3.5x	Off	Off	On	On
266MHz	66MHz	4x	On	On	Off	On
300MHz	66MHz	4.5x	On	Off	Off	On
333MHz	66MHz	5x	Off	On	Off	On
350MHz	100MHz	3.5x	Off	Off	On	On
400MHz	100MHz	4x	On	On	Off	On
450MHz	100MHz	4.5x	On	Off	Off	On
500MHz	100MHz	5x	Off	On	Off	On