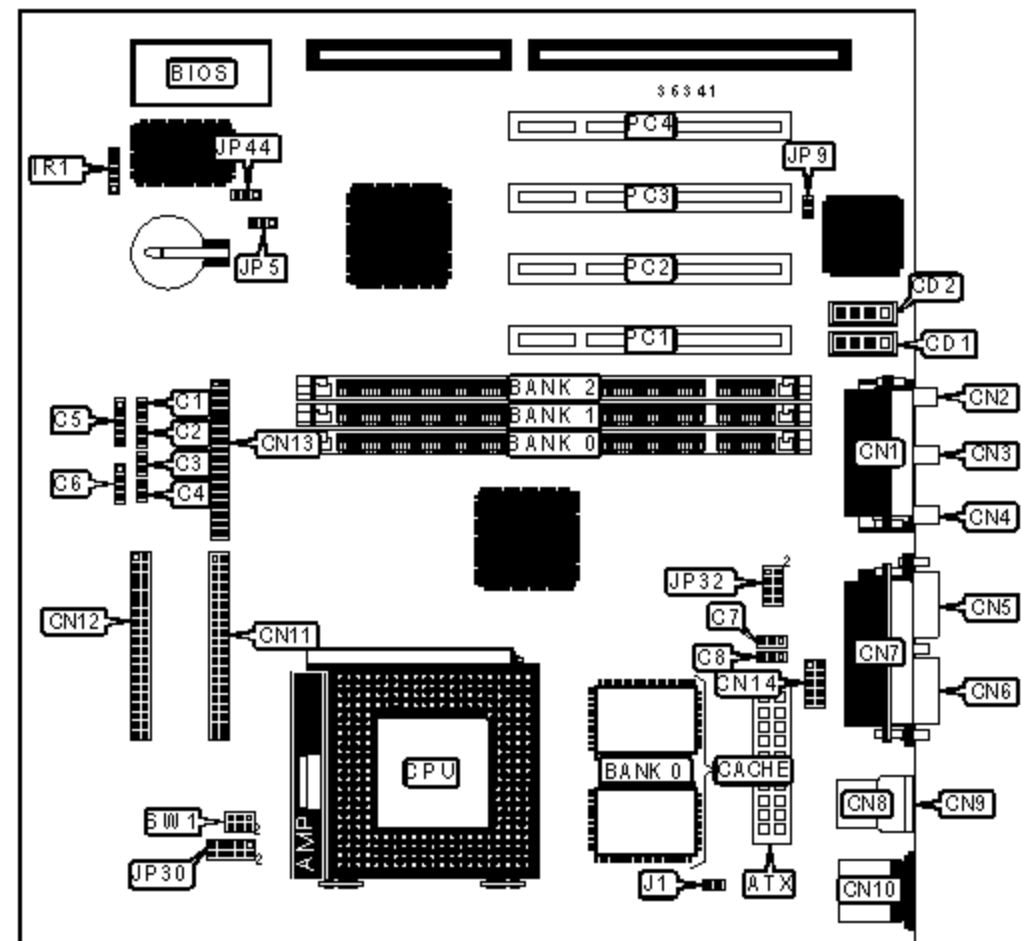


SOYO COMPUTER CO., LTD.

SY-5SSM

Device Type	Mainboard
Processor	CX 6X86/CX 686MX/CX MII/AM K5/AM K6/AM K6-2/IDT/Pentium/ Pentium MMX
Processor Speed	100/133/166/200/225/233/266/300/333/350/366/380/375/ 400/450MHz
Chip Set	SIS 530
Video Chip Set	Unidentified
Maximum Onboard Memory	768MB (SDRAM supported) (Unified Memory Architecture)
Maximum Audio Memory	ESS
Cache	1024KB
BIOS	Award
Dimensions	244mm x 220mm
I/O Options	32-bit PCI slots (4), floppy drive interface, game/MIDI port, IDE interfaces (2), parallel port, PS/2 mouse port, serial ports (2), IR connector, USB connectors (2), ATX power connector, line in, line out, microphone in, audio in - CD-ROMs (2), wake on LAN connector



CONNECTIONS

Purpose	Location	Purpose	Location
ATX power connector	ATX	Line out	CN4
IDE interface LED	C1	VGA port	CN5
ACPI LED	C2	Serial port 1	CN6

Soft off power supply	C3	Parallel port	CN7
Reset switch	C4	USB connector 1	CN8
Speaker	C5	USB connector 2	CN9
Power LED & keylock	C6	PS/2 mouse port	CN10
CPU fan power	C7	Floppy drive interface	CN11
Chassis fan power	C8	IDE interface 2	CN12
Audio in - CD-ROM	CD1	IDE interface 1	CN13
Audio in - CD-ROM	CD2	Serial port 2	CN14
Game/MIDI port	CN1	IR connector	IR1
Microphone in	CN2	Wake on LAN connector	JP44
Line in	CN3	32-bit PCI slots	PC1 - PC4

USER CONFIGURABLE SETTINGS

Function		Label	Position
»	CMOS memory normal operation	JP5	Pins 1 & 2 closed
	CMOS memory clear	JP5	Pins 2 & 3 closed
	On board sound enabled	JP9	Closed
	On board sound disabled	JP9	Open

DIMM CONFIGURATION

Size	Bank 0	Bank 1	Bank 2
8MB	(1) 1M x 64	None	None
16MB	(1) 2M x 64	None	None
16MB	(1) 1M x 64	(1) 1M x 64	None
24MB	(1) 2M x 64	(1) 1M x 64	None
24MB	(1) 1M x 64	(1) 1M x 64	(1) 1M x 64

32MB	(1) 4M x 64	None	None
32MB	(1) 2M x 64	(1) 1M x 64	(1) 1M x 64
32MB	(1) 2M x 64	(1) 2M x 64	None
40MB	(1) 4M x 64	(1) 1M x 64	None
40MB	(1) 2M x 64	(1) 2M x 64	(1) 1M x 64
48MB	(1) 4M x 64	(1) 1M x 64	(1) 1M x 64
48MB	(1) 4M x 64	(1) 2M x 64	None
48MB	(1) 2M x 64	(1) 2M x 64	(1) 2M x 64
56MB	(1) 4M x 64	(1) 2M x 64	(1) 1M x 64
64MB	(1) 8M x 64	None	None
64MB	(1) 4M x 64	(1) 2M x 64	(1) 2M x 64
64MB	(1) 4M x 64	(1) 4M x 64	None
72MB	(1) 8M x 64	(1) 1M x 64	None

DIMM CONFIGURATION (CON'T)			
Size	Bank 0	Bank 1	Bank 2
72MB	(1) 4M x 64	(1) 4M x 64	(1) 1M x 64
80MB	(1) 8M x 64	(1) 1M x 64	(1) 1M x 64
80MB	(1) 8M x 64	(1) 2M x 64	None
80MB	(1) 4M x 64	(1) 4M x 64	(1) 2M x 64
88MB	(1) 8M x 64	(1) 2M x 64	(1) 1M x 64
96MB	(1) 8M x 64	(1) 2M x 64	(1) 2M x 64
96MB	(1) 8M x 64	(1) 4M x 64	None
96MB	(1) 4M x 64	(1) 4M x 64	(1) 4M x 64
104MB	(1) 8M x 64	(1) 4M x 64	(1) 1M x 64
112MB	(1) 8M x 64	(1) 4M x 64	(1) 2M x 64
128MB	(1) 16M x 64	None	None
128MB	(1) 8M x 64	(1) 4M x 64	(1) 4M x 64

128MB	(1) 8M x 64	(1) 8M x 64	None
136MB	(1) 8M x 64	(1) 8M x 64	(1) 1M x 64
144MB	(1) 16M x 64	(1) 1M x 64	(1) 1M x 64
144MB	(1) 16M x 64	(1) 2M x 64	None
144MB	(1) 8M x 64	(1) 8M x 64	(1) 2M x 64
152MB	(1) 16M x 64	(1) 2M x 64	(1) 1M x 64
176MB	(1) 16M x 64	(1) 4M x 64	(1) 2M x 64
192MB	(1) 16M x 64	(1) 4M x 64	(1) 4M x 64
192MB	(1) 16M x 64	(1) 8M x 64	None
192MB	(1) 8M x 64	(1) 8M x 64	(1) 8M x 64
256MB	(1) 32M x 64	None	None
256MB	(1) 16M x 64	(1) 8M x 64	(1) 8M x 64
264MB	(1) 32M x 64	(1) 1M x 64	None
272MB	(1) 32M x 64	(1) 1M x 64	(1) 1M x 64
272MB	(1) 32M x 64	(1) 2M x 64	None
288MB	(1) 32M x 64	(1) 2M x 64	(1) 2M x 64
288MB	(1) 32M x 64	(1) 4M x 64	None
320MB	(1) 32M x 64	(1) 4M x 64	(1) 4M x 64
320MB	(1) 32M x 64	(1) 8M x 64	None
384MB	(1) 32M x 64	(1) 8M x 64	(1) 8M x 64
384MB	(1) 32M x 64	(1) 16M x 64	None
384MB	(1) 16M x 64	(1) 16M x 64	(1) 16M x 64
512MB	(1) 32M x 64	(1) 16M x 64	(1) 16M x 64
512MB	(1) 32M x 64	(1) 32M x 64	None
768MB	(1) 32M x 64	(1) 32M x 64	(1) 32M x 64

Note: Board accepts SDRAM memory.

CACHE CONFIGURATION

Size	Bank 0
1MB	(2) 128K x 32

CPU SPEED SELECTION (CX 6X86)					
CPU speed	Clock speed	Multiplier	SW1/ pins 1 & 2	SW1/ pins 3 & 4	SW1/ pins 5 & 6
166MHz	66MHz	2x	Open	Open	Closed
200MHz	75MHz	2x	Open	Open	Closed

CPU SPEED SELECTION (CX 6X86, CON'T)						
CPU speed	Clock speed	Multiplier	JP32/ pins 1 & 2	JP32/ pins 3 & 4	JP32/ pins 5 & 6	JP32/ pins 7 & 8
166MHz	66MHz	2x	Open	Closed	Closed	Closed
200MHz	75MHz	2x	Open	Closed	Closed	Open

CPU SPEED SELECTION (CX 6X86MX)					
CPU speed	Clock speed	Multiplier	SW1/ pins 1 & 2	SW1/ pins 3 & 4	SW1/ pins 5 & 6
166MHz	66MHz	2x	Closed	Open	Open
200MHz	66MHz	2.5x	Closed	Closed	Open
200MHz	75MHz	2x	Closed	Open	Open
233MHz	75MHz	2.5x	Closed	Closed	Open
266MHz	83MHz	2.5x	Closed	Closed	Open

CPU SPEED SELECTION (CX 6X86MX, CON'T)						
CPU speed	Clock speed	Multiplier	JP32/ pins 1 & 2	JP32/ pins 3 & 4	JP32/ pins 5 & 6	JP32/ pins 7 & 8
166MHz	66MHz	2x	Open	Closed	Closed	Closed

200MHz	66MHz	2.5x	Open	Closed	Closed	Closed
200MHz	75MHz	2x	Open	Closed	Closed	Open
233MHz	75MHz	2.5x	Open	Closed	Closed	Open
266MHz	83MHz	2.5x	Open	Closed	Open	Closed

CPU SPEED SELECTION (CX MII)					
CPU speed	Clock speed	Multiplier	SW1/ pins 1 & 2	SW1/ pins 3 & 4	SW1/ pins 5 & 6
300MHz	66MHz	3.5x	Open	Open	Open
300MHz	75MHz	3x	Open	Closed	Open
333MHz	66MHz	4x	Open	Open	Open
333MHz	75MHz	3.5x	Open	Open	Open
333MHz	83MHz	3x	Open	Closed	Open
333MHz	100MHz	3x	Open	Closed	Open
350MHz	100MHz	3x	Open	Closed	Open

CPU SPEED SELECTION (CX MII, CON'T)						
CPU speed	Clock speed	Multiplier	JP32/ pins 1 & 2	JP32/ pins 3 & 4	JP32/ pins 5 & 6	JP32/ pins 7 & 8
300MHz	66MHz	3.5x	Open	Closed	Closed	Closed
300MHz	75MHz	3x	Open	Closed	Closed	Open
333MHz	66MHz	4x	Open	Closed	Closed	Closed
333MHz	75MHz	3.5x	Open	Closed	Closed	Open
333MHz	83MHz	3x	Open	Closed	Open	Closed
333MHz	100MHz	3x	Open	Open	Closed	Closed
350MHz	100MHz	3x	Open	Open	Closed	Closed

CPU SPEED SELECTION (AM K5)

CPU speed	Clock speed	Multiplier	SW1/ pins 1 & 2	SW1/ pins 3 & 4	SW1/ pins 5 & 6
100MHz	66MHz	1.5x	Open	Open	Open
133MHz	66MHz	2x	Closed	Open	Open
166MHz	66MHz	2.5x	Closed	Closed	Open

CPU SPEED SELECTION (AM K5, CON'T)

CPU speed	Clock speed	Multiplier	JP32/ pins 1 & 2	JP32/ pins 3 & 4	JP32/ pins 5 & 6	JP32/ pins 7 & 8
100MHz	66MHz	1.5x	Open	Closed	Closed	Closed
133MHz	66MHz	2x	Open	Closed	Closed	Closed
166MHz	66MHz	2.5x	Open	Closed	Closed	Closed

CPU SPEED SELECTION (AM K6)

CPU speed	Clock speed	Multiplier	SW1/ pins 1 & 2	SW1/ pins 3 & 4	SW1/ pins 5 & 6
166MHz	66MHz	2.5x	Closed	Closed	Open
200MHz	66MHz	3x	Open	Closed	Open
233MHz	66MHz	3.5x	Open	Open	Open
266MHz	66MHz	4x	Open	Open	Open
300MHz	66MHz	4.5x	Closed	Closed	Closed

CPU SPEED SELECTION (AM K6, CON'T)

CPU speed	Clock speed	Multiplier	JP32/ pins 1 & 2	JP32/ pins 3 & 4	JP32/ pins 5 & 6	JP32/ pins 7 & 8
166MHz	66MHz	2.5x	Open	Closed	Closed	Closed
200MHz	66MHz	3x	Open	Closed	Closed	Closed

233MHz	66MHz	3.5x	Open	Closed	Closed	Closed
266MHz	66MHz	4x	Open	Closed	Closed	Closed
300MHz	66MHz	4.5x	Open	Closed	Closed	Closed

CPU SPEED SELECTION (AM K6-2)

CPU speed	Clock speed	Multiplier	SW1/ pins 1 & 2	SW1/ pins 3 & 4	SW1/ pins 5 & 6
266MHz	66MHz	4x	Open	Open	Open
300MHz	66MHz	4.5x	Closed	Closed	Closed
300MHz	100MHz	3x	Open	Closed	Open
333MHz	66MHz	5x	Open	Closed	Closed
333MHz	95MHz	3.5x	Open	Open	Open
350MHz	100MHz	3.5x	Open	Open	Open
366MHz	66MHz	5.5x	Open	Open	Closed
380MHz	95MHz	4x	Open	Open	Open
400MHz	100MHz	4x	Open	Open	Open
450MHz	100MHz	4.5x	Closed	Closed	Closed

CPU SPEED SELECTION (AM K6-2, CON'T)

CPU speed	Clock speed	Multiplier	JP32/ pins 1 & 2	JP32/ pins 3 & 4	JP32/ pins 5 & 6	JP32/ pins 7 & 8
266MHz	66MHz	4x	Open	Closed	Closed	Closed
300MHz	66MHz	4.5x	Open	Closed	Closed	Closed
300MHz	100MHz	3x	Open	Open	Closed	Closed
333MHz	66MHz	5x	Open	Closed	Closed	Closed
333MHz	95MHz	3.5x	Open	Open	Closed	Open
350MHz	100MHz	3.5x	Open	Open	Closed	Closed
366MHz	66MHz	5.5x	Open	Closed	Closed	Closed

380MHz	95MHz	4x	Open	Open	Closed	Open
400MHz	100MHz	4x	Open	Open	Closed	Closed
450MHz	100MHz	4.5x	Open	Open	Closed	Closed

CPU SPEED SELECTION (IDT WINCHIP)

CPU speed	Clock speed	Multiplier	SW1/ pins 1 & 2	SW1/ pins 3 & 4	SW1/ pins 5 & 6
200MHz	66MHz	3x	Open	Closed	Open
225MHz	75MHz	3x	Open	Closed	Open

CPU SPEED SELECTION (IDT WINCHIP, CON'T)

CPU speed	Clock speed	Multiplier	JP32/ pins 1 & 2	JP32/ pins 3 & 4	JP32/ pins 5 & 6	JP32/ pins 7 & 8
200MHz	66MHz	3x	Open	Closed	Closed	Closed
225MHz	75MHz	3x	Open	Closed	Closed	Open

CPU SPEED SELECTION (INTEL)

CPU speed	Clock speed	Multiplier	SW1/ pins 1 & 2	SW1/ pins 3 & 4	SW1/ pins 5 & 6
100MHz	66MHz	1.5x	Open	Open	Open
133MHz	66MHz	2x	Closed	Open	Open
166MHz	66MHz	2.5x	Closed	Closed	Open
200MHz	66MHz	3x	Open	Closed	Open

CPU SPEED SELECTION (INTEL, CON'T)

CPU speed	Clock speed	Multiplier	JP32/ pins 1 & 2	JP32/ pins 3 & 4	JP32/ pins 5 & 6	JP32/ pins 7 & 8
-----------	-------------	------------	---------------------	---------------------	---------------------	---------------------

100MHz	66MHz	1.5x	Open	Closed	Closed	Closed
133MHz	66MHz	2x	Open	Closed	Closed	Closed
166MHz	66MHz	2.5x	Open	Closed	Closed	Closed
200MHz	66MHz	3x	Open	Closed	Closed	Closed

CPU SPEED SELECTION (INTEL MMX)					
CPU speed	Clock speed	Multiplier	SW1/ pins 1 & 2	SW1/ pins 3 & 4	SW1/ pins 5 & 6
166MHz	66MHz	2.5x	Closed	Closed	Open
200MHz	66MHz	3x	Open	Closed	Open
233MHz	66MHz	3.5x	Open	Open	Open

CPU SPEED SELECTION (INTEL MMX, CON'T)						
CPU speed	Clock speed	Multiplier	JP32/ pins 1 & 2	JP32/ pins 3 & 4	JP32/ pins 5 & 6	JP32/ pins 7 & 8
166MHz	66MHz	2.5x	Open	Closed	Closed	Closed
200MHz	66MHz	3x	Open	Closed	Closed	Closed
233MHz	66MHz	3.5x	Open	Closed	Closed	Closed

CPU TYPE SELECTION	
Type	J1
AMD	Open
Cyrix	Closed
IDT	Open
Intel	Open

CPU VOLTAGE SELECTION (SINGLE)					
---------------------------------------	--	--	--	--	--

Voltage	JP30/ pins 1 & 2	JP30/ pins 3 & 4	JP30/ pins 5 & 6	JP30/ pins 7 & 8	JP30/ pins 9 & 10
3.3v	Open	Closed	Closed	Open	Closed
3.5v	Open	Closed	Closed	Closed	Closed

CPU VOLTAGE SELECTION (DUAL)					
Voltage	JP30/ pins 1 & 2	JP30/ pins 3 & 4	JP30/ pins 5 & 6	JP30/ pins 7 & 8	JP30/ pins 9 & 10
2.0v	Closed	Closed	Closed	Closed	Open
2.1v	Open	Open	Open	Open	Closed
2.2v	Open	Open	Open	Closed	Open
2.3v	Open	Open	Open	Closed	Closed
2.4v	Open	Open	Closed	Open	Open
2.5v	Open	Open	Closed	Open	Closed
2.6v	Open	Open	Closed	Closed	Open
2.7v	Open	Open	Closed	Closed	Closed
2.8v	Open	Closed	Open	Open	Open
2.9v	Open	Closed	Open	Open	Closed
3.0v	Open	Closed	Open	Closed	Open
3.1v	Open	Closed	Open	Closed	Closed
3.2v	Open	Closed	Closed	Open	Open